



**NEW & ENHANCED TRAILERS & OPTIONS**





**T**he new features and options we're introducing in 2014 all have one thing in common—they come from you. That's right—every new feature and option was suggested by customers and our dealers on behalf of their customers. They were then extensively researched and tested before being included on the product line.

Speaking of the product line, Featherlite is excited to unveil the 2015 horse trailers! State of the art materials and advanced engineering techniques have combined to give you features that not only improve durability but also give the trailers a sharper look. You'll be able to tell the difference immediately!

In addition to our new features and options, this booklet showcases the versatility of our trailers. Featherlite trailers are available with multiple layouts and options, including the ever-popular Model 8127 in different lengths, widths and stall layouts along with the livestock pen package and adjustable gate system for our Model 8107! You'll see the flexibility of many of our models. Check out what Featherlite has to offer and then visit your nearest Featherlite dealer!

# HORSE TRAILERS



**STANDOUT  
OPTIONS!**



Sleek full length black stall pads



Convenient electric assist landing gear



Stylish Featherlite corner caps



LED load light provides extra illumination

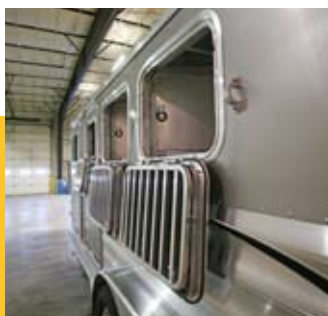


Comfortable "week-ender" living quarters



## Model 8541 Horse Trailer with Living Quarters

Give horses some extra comfort with the stylish black full length stall pads in this Model 8541 Featherlite horse trailer! Of course, they'll also appreciate the "WOW" mats under their feet while they're traveling. Humans will like the convenience that comes with the electric assist landing gear and the LED load light. After your horse show or trail ride, both your horse and you can relax under the awning with LED strip lighting!



**NEW THIS YEAR!**

**NEW WINDOWS!** - Newly redesigned for 2015, Featherlite's standard horse trailer drop down feed doors feature a heavy-duty frame, hinges and bars that also maximize airflow and light! They also feature a lowered handle for extra convenience, and the new heavy-duty hinge allows the window to lay flat against the trailer, allowing for a more secure ride when the window is down during travel.

## STANDARD FEATURES



New composite rubber wall lining in horse area



Durable new dressing room turf



New heavy-duty drop-down feed doors

## Model 9409 Horse Trailer

Almost all the new features of Featherlite's 2015 horse trailers can be found on this Model 9409! Sharp-looking horse wall rubber, rugged dressing room turf and sturdy, easy-to-use drop-down feed doors combine with fantastic options like "WOW" mats and the new LED dome light option to create a trailer that redefines quality!



## NEW THIS YEAR!

**NEW WALL RUBBER** - A hi-tech composite rubber on the walls in the horse stall area holds up better to the elements and wear and tear from horses and provides a sleek look. Look for this standard on 2015 Featherlite horse trailers!

## STANDARD FEATURES



New composite rubber wall lining in horse area



New heavy-duty drop-down feed doors



New durable dressing room turf



## Model 8541 Horse Trailer

Part of Featherlite's new 2015 line of horse trailers, this Model 8541 showcases a ton of new features! The new standard wall rubber really sets this trailer apart, as does the new drop down feed doors. The "WOW" mat option in the horse area provides superior comfort to horses, and the new ultra-durable turf in the dressing room comes standard!



## NEW THIS YEAR!

**NEW VENT LINING** – Featherlite's standard roof vents feature a new vent lining that hugs close to the roof, eliminating gaps and creating a cleaner look in the horse area.

## STANDOUT OPTIONS!



Stylish Featherlite  
corner caps



Black full length  
stall pads



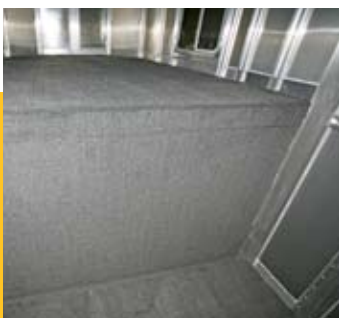
New brighter LED  
dome lights



Roomy Sierra  
living quarters

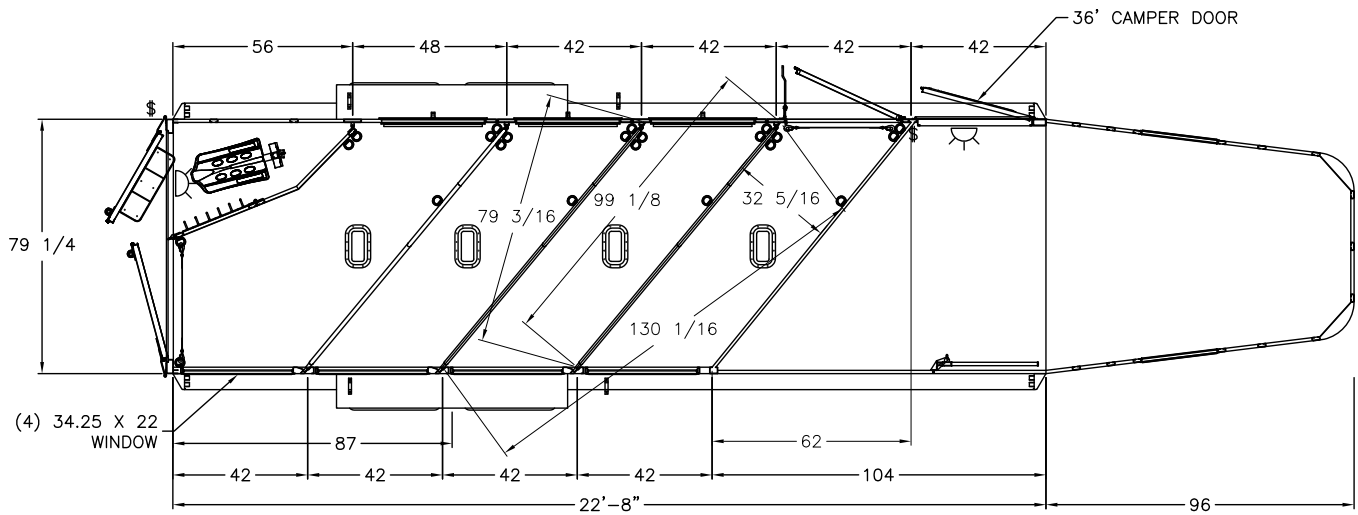
## Model 8581 Living Quarters

While the Sierra interior on this Model 8581 Featherlite living quarters horse trailer commands attention, impressive options such as the Featherlite corner caps, the LED dome lights, the handy single leg hydraulic landing gear and the awning demand to be noticed too!



## NEW THIS YEAR!

**NEW DRESSING ROOM TURF** – Featherlite's new water-resistant turf in the dressing room is thicker, more durable and resists water, mold and mildew! It is held in place with a new-state-of-the-art adhesive that is more temperature resistant.



## Model 8533 Horse Trailer

Featherlite engineers have reconfigured the Model 8533's horse stalls to make them even roomier. The new stalls are still 42" wide, but we've added almost a foot in length to them!



### NEW THIS YEAR!

**TELESCOPING LADDER** – An optional telescoping ladder makes climbing a trailer easier and conveniently stores on the trailer's side when finished!



# LIVESTOCK TRAILERS



## STANDOUT OPTIONS!



Versatile  
adjustable  
center gate



"Step Safe" rear  
gate and rear  
ramp option



Stylish aluminum  
wheels



## Model 8107 Livestock Trailer

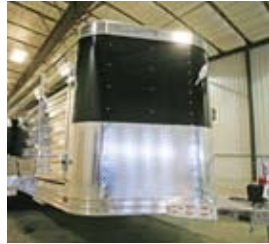
This Model 8107 Featherlite livestock trailer was built to show off at shows. The polished side sheets and plexiglass will really grab a crowd's attention, and the rear ramp option is perfect for making sure livestock get loaded and unloaded safely. "Step Safe" rear and center gates prevent livestock from tripping when entering and exiting the trailer, and an adjustable center gate means greater versatility in hauling livestock.



## NEW THIS YEAR!

**NEW STYLE DROP GATE** – This brawny new drop gate comes standard on Featherlite's Model 8127 (and is an option on the Model 8117)! The design takes its cue from tailgates and features a convenient, one-handed tailgate latch. It lays flat against the drop wall and the open top beam makes it easy to clean!

**STANDOUT  
OPTIONS!**



Protective gravel guard & classy black side sheets



Convenient plexiglass storage compartment



Versatile pen system for hauling smaller livestock



## Model 8107 Livestock Trailer with Pens

The pen system really sets this Model 8107 Featherlite livestock trailer apart. This option allows for more versatility in transport, as well as offering a more convenient way to load and unload smaller livestock. Exterior polished side sheets and plexiglass make the outside stand out, too!

### NEW THIS YEAR!

**TACK PACKAGES** – Featherlite's new optional tack packages for our Model 8413 and 8417 combo trailers give you a complete set of tack options, making customizing your trailer easier!

**2014**  
**FEATURES &  
OPTIONS**

### NEW THIS YEAR!

**TRANSLUCENT SEMI STOCK TRAILER ROOF** – A new translucent semi stock roof option for the Model 8261 semi stock trailer allows more natural light to enter the trailer, making livestock calmer!

## STANDOUT OPTIONS!



Rugged  
treadplate nose



New beefy latch-style  
gooseneck drop gate



Running boards offer  
added convenience  
when checking on  
livestock



Heavy-duty western  
rear gate



## Model 8117 Livestock Trailer

This Model 8117 Featherlite livestock trailer is decked out with fantastic options! Treadplate on the black nose and corners makes for a tough, memorable look, while the running boards and optional LED dome light let farmers and ranchers easily check up on their animals. A rugged western rear gate rounds out this trailer and will really stand up to abuse!

**2014**  
**FEATURES &**  
**OPTIONS**

### NEW THIS YEAR!

**NEW SEMI STOCK TRAILER VENTS** – The new trailer vents for Featherlite's Model 8261 semi stock trailer are front mounted to offer customers greater convenience.

**STANDOUT  
OPTIONS &  
FEATURES!**



New rugged latch style gooseneck drop gate — standard!



New brighter LED dome light



Brawny treadplate nose



Heavy-duty western rear gate

## Model 8127 Livestock Trailer

The treadplate on the nose and corners of this Model 8127 Featherlite livestock trailer is the first thing that catches people’s attention. After that, they tend to notice other things, like the plexiglass on the airspaces and the beefy western rear gate package. On the inside, the optional brighter, energy efficient LED dome light shows off the new convenient, durable latch style gooseneck drop gate and marks the moment when people understand how much quality Featherlite puts into their trailers.



**NEW THIS YEAR!**

**THICKER DOCK BUMPER** – Featherlite’s new 4-inch standard rubber dock bumper on Models 8117 and 8107 livestock trailers provide improved shock absorption when backing up to gates!

## STANDOUT OPTIONS!



Stylish graphics



New brighter LED  
dome light



Sharp looking  
stylish plexiglass  
on air spaces



Running board  
makes checking on  
livestock easier



Gravel guard offers  
protection from  
road shrapnel



## Model 8107 Livestock Trailer

This Model 8107 Featherlite livestock trailer was built to take wear and tear on the road, thanks to its gravel guard. Running boards make checking up on animals easy, and a new LED dome light shines brighter and uses less power. Plexiglass on the airspaces, graphics and a black nose combine for a memorable look.

CAR | RECREATIONAL | UTILITY TRAILERS



## STANDOUT OPTIONS!



Extruded aluminum floor stands up to abuse



Stylish stainless steel nose & corners



Rugged treadplate ramp



## Model 1641 Car/Recreational/Utility Trailer

The expanded height and the new optional LED dome light on this Model 1641 Featherlite are sure to turn some heads, but you might also want to look at the floor. That's where you'll see the smooth extruded aluminum floor, the treadplate rear ramp with pressure latches and the swivel D-ring tie downs!

## NEW THIS YEAR!



**NEW LED LIGHTS** – We've added new LED light options for all Featherlite trailers, such as a long-lasting energy efficient LED dome light!







## STANDOUT OPTIONS!



New brighter LED dome light



Torsion assist ramp eliminates need for cable assist

## Model 1610 Recreational/Utility Trailer

While this Model 1610 Featherlite trailer stands out initially because of its red side sheets, the convenient torsion assist ramp is also sure to receive a lot of attention. Of course, both of these options have to compete with the new optional LED dome light!

## STANDOUT OPTIONS!

**VENDING DOOR** – A heavy-duty, one-man vending door on an enclosed trailer can greatly increase its versatility.



## STANDOUT OPTIONS!

**OVERHEAD CABINETS** – Store your gear in a convenient location without decreasing your floor space!

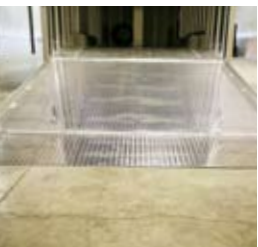
## STANDOUT OPTIONS!



Escape door provides easy access to cargo



Raised floor offers more versatility



Ramp extension makes loading & unloading easier



## Model 4926 Car Trailer

This Model 4926 Featherlite was built to haul show cars! The raised floor and ramp extension allows for easier loading and unloading, while the raised interior height provides plenty of overhead room for your vehicles. The over fender escape door allows owners to refuel their vehicles without having to unload them!



## STANDOUT OPTIONS!

**POWER-LIFT OPTION** – Make loading vehicles easy by adding the power-lift option to the Model 3110 Featherlite car trailer.

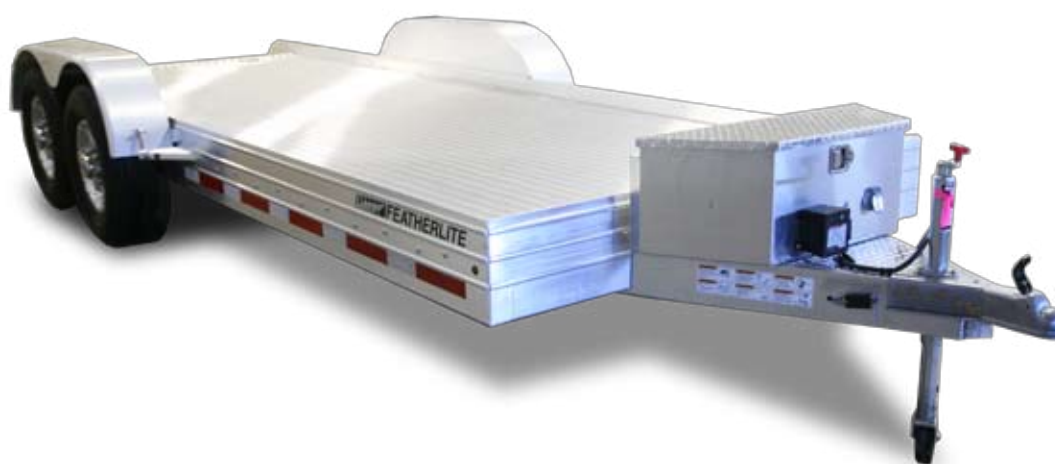
## STANDOUT OPTIONS!



Handy power lift package



State-of-the-art wireless remote control



## Model 3110 Car Trailer

This Model 3110 features Featherlite's famous power lift package to give you ultimate safety and convenience when loading and unloading your cargo! Want even greater convenience? Check out the power lift package's wireless remote option!



## STANDOUT OPTIONS!

**FRONT TOOL BOX** – Keep your tools and equipment stored safely inside a front tool box on Featherlite's open car trailer Model 3110.



**FEATHERLITE**<sup>®</sup>  
**TRAILERS**

All information current as of 2/2014. Some trailers shown with options. Featherlite reserves the right to change this information without notice.

