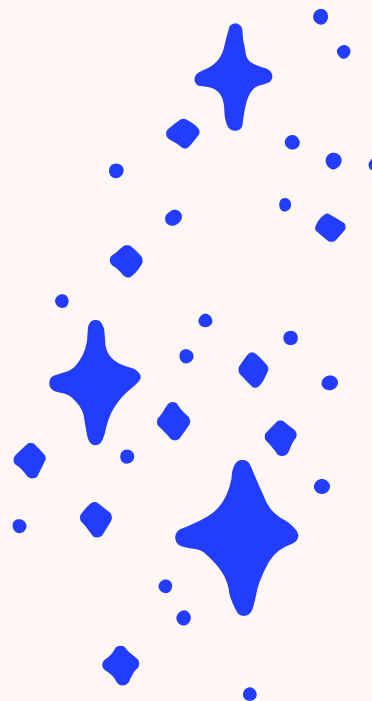
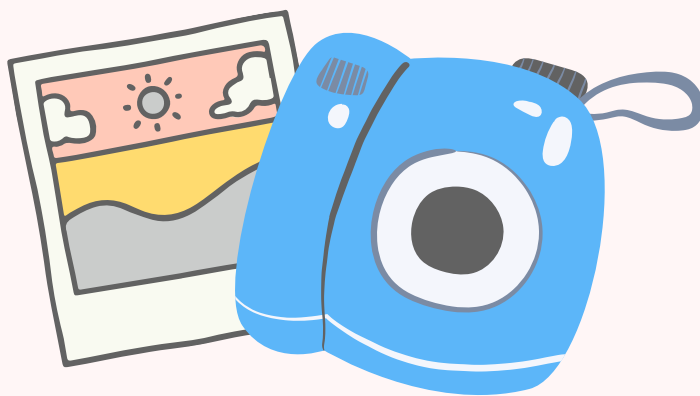


@congregationbetheltx

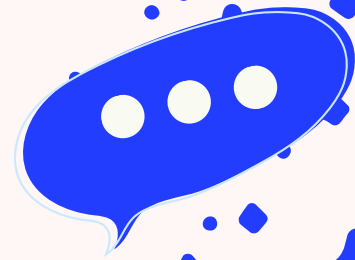


Show Us Your

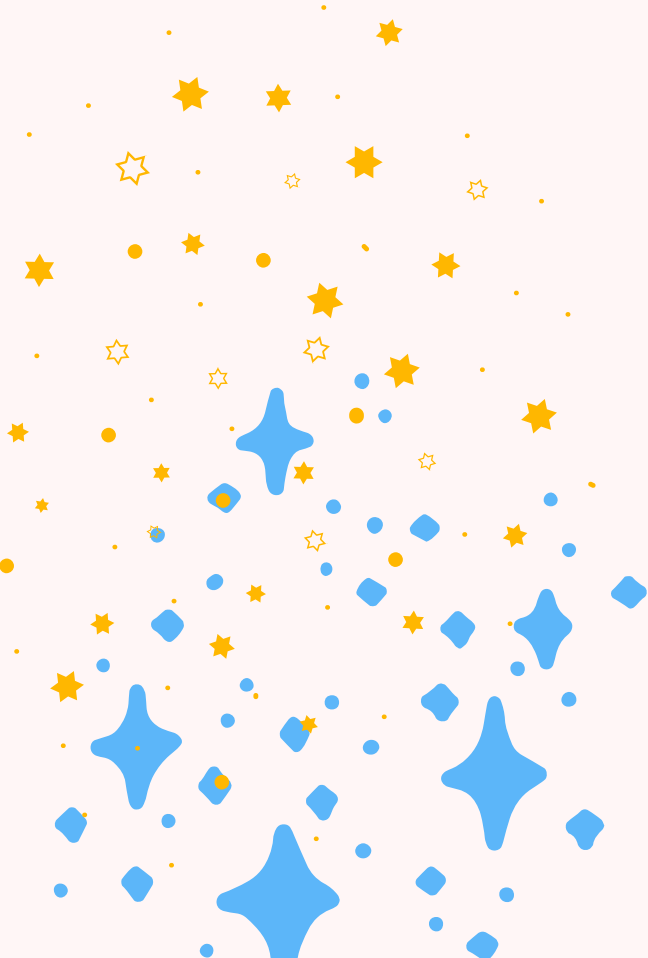
Traditions



@congregationbetheltx



We Wanna See Your
Challah



@congregationbetheltx



a lil' about our

Challah

We eat round challah on Rosh Hashanah to symbolize the cyclical nature of the year, reflecting the idea that life comes full circle.

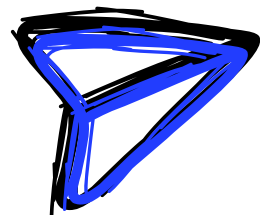
The round shape also represents the continuity and eternity of God's sovereignty and our desire for a sweet and fulfilling year ahead.

Additionally, the circular challah can symbolize the unity and wholeness of the Jewish people and the wish for a harmonious and complete year.





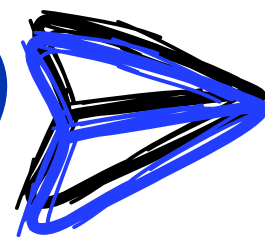
show us some love!
sharing is caring!



@congregationbetheltx



Scan QR Code
for Recipe



@congregationbetheltx