

**Explore New Funders with IP's GrantFinder**

Our Pathbreaking Guide to Top Grantmakers

[Search Now](#)

# Inside **Philanthropy**

Who's Funding What, and Why

[ISSUES](#) [PLACES](#) [BLOGS](#) [JOBS](#) [GRANTFINDER](#)



## Why Does Hamilton's Producer Want to Clone Giant Trees?

Julia Travers



Custom Search

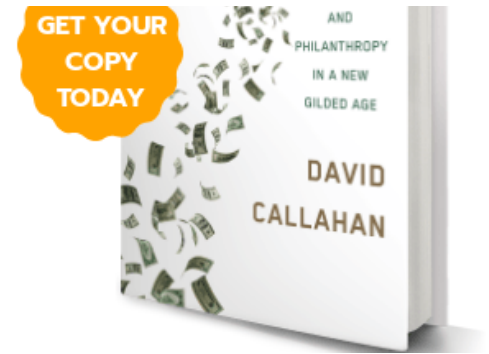




STEPHEN MOEHLE/SHUTTERSTOCK

Trees absorb and hold carbon, a trait increasingly recognized as vital in the era of global warming. Of course, they also release oxygen, clean air and water, lower temperatures, reduce erosion and provide habitats, food and medicines, among other helpful traits. But only a small percentage of the oldest and most powerful trees on Earth remain standing. A Broadway couple that recently took up the cause of forests is backing a project that clones and propagates the largest and most ancient specimens, dubbed “champion trees.”

The new Seller-Lehrer Family Foundation (SLFF) was founded by Jeffrey Seller, producer of *Hamilton*, *Rent* and other big shows, and his partner, Josh Lehrer, a



## Follow the Money!

Want to get inside funders' heads? Sign up for our email updates.

SIGN UP

### Featured Jobs

Find Jobs

GO

Director, Development

Washington, DC - Center for Civilians  
in Conflict

well-known Broadway photographer and documentarian. SLFF gave a multiyear grant of approximately \$375,000 with a matching gift component to the Archangel Ancient Tree Archive (AATA) to support its tree-cloning programs.

Marty Singer, SLFF director and president, tells us SLFF believes environmental risks “pose the greatest challenge to the planet and deserve immediate attention and action.” He adds that “saving champion trees and planting and nurturing trees delivers immediate benefits to the environment,” such as those mentioned above. Big, powerhouse trees like coastal redwoods can remove more than 200 tons of carbon dioxide from the atmosphere over their lifespan, much more than the one-ton load of an average tree.

Funding for trees typically falls into conservation philanthropy, overlapping with causes like [indigenous land rights](#) and responses to climate change. We’ve seen philanthropies take international [rainforests](#) and treed areas of the [mid-South](#) and [Northern California](#) under their wing. Because forest and land use issues link to complex topics like logging, farming, fossil fuel extraction and water quality regulation, tree conservation can be a hard fight. But at times, government agencies, environmental groups, philanthropies, industry leaders and First Nations groups come together to heed the Lorax’s call. We saw this in a [forest protection agreement](#) for the boreal forests of Canada a few years ago, which was backed by loyal conservation givers like the Hewlett and Moore Foundations, among others.

Singer says SLFF’s foray into cloning ancient trees was inspired by its founders’ personal experiences and ties to the land, which is not unusual. Lehrer brought AATA’s work to the attention of the board after the couple decided to plant trees “that were environmentally important” on newly acquired land in Westchester

About The Position Center for Civilians  
in Confl...

#### **ASSOCIATE DIRECTOR OF FOUNDATIONS**

Bronx, NY - **Montefiore Medical Center**  
ASSOCIATE DIRECTOR OF  
FOUNDATIONS The Associate Di...

#### **MAJOR GIFT OFFICER**

Bronx, NY - **Montefiore Medical Center**  
MAJOR GIFT OFFICER The Office of  
Development seeks...

#### **Executive Vice President, Finance**

Mountain View, CA - **Silicon Valley  
Community Foundation**  
For the past 11 years, the mission of the  
Silicon ...

#### **Director of Major Gifts**

Cherry Hill, NJ - **Bancroft**  
This position is responsible for major  
giving, pl...

[Post a Job](#) [More jobs](#)

Powered by **ymcareers**  
by communitybrands

County, New York. Lehrer also recently read a book published by his friend, Cindy Spiegel: *The Man Who Planted Trees: A Story of Lost Groves, the Science of Trees, and a Plan to Save the Planet*, by Jim Robbins. These experiences led the foundation to reach out to AATA, “discuss [its] needs” and give it “long-term operational funding.”

AATA carries out a unique horticultural process to propagate the world’s largest and most iconic trees—an undertaking it states was previously thought genetically impossible. AATA identifies 100 types of trees as the most ecologically important and plans to clone them all. It has already successfully cloned 19 ancient tree species from North America and Europe, including sequoias, redwoods, Monterey pines, white oaks and black walnuts. It also plans to maintain a living library for future preservation and research.

The idea to clone these giants comes from the redwood itself, which naturally self-clones in a circle stretching about 20 feet around itself, sometimes called a “fairy ring.” The trees grow these circles decades before their death. Some of the tree DNA AATA uses comes from stumps up to 3,000 years old that measured up to 35 feet in diameter when they were cut in the 19th and 20th centuries.

Hundreds of tree samples and saplings are housed in the nonprofit’s Copemish, Michigan, warehouse, where it also runs community education programs for youth and adults. AATA carried out successful reforestation with a new grove of cloned redwoods and sequoias in Oregon, which it states is “thriving after more than one year of growth,” and which it still monitors. In late 2018, a few months before the SLFF grant, it planted 75 ancient redwood clones at the Presidio National Park in San Francisco. AATA saplings are also developing in groves in Canada, England,

France, New Zealand and Australia. The nonprofit currently receives funding from the National Tree Trust as well as private donors like the SLFF. With more backing, it will expand its facilities, infrastructure, programming and outreach, and establish an endowment fund.

SLFF is based in New York City and started grantmaking in 2018. It plans to support cultural and environmental initiatives, and specifically, public charities with educational, theatrical, artistic, Jewish community and/or environmental purposes.

A few of its other gifts to date support dramatic arts (and so also tie directly to the founders' personal interests). The Mosaic Youth Theatre of Detroit is a grantee that also has a geographic tie; Seller is a Detroit native. The Dramatists Guild Foundation and Artists Striving to End Poverty are among the other early grant recipients. Singer ([msinger@adventureland.com](mailto:msinger@adventureland.com)) is the contact person for SLFF grant questions and applications.

**Read More**





**Why Does Hamilton's Producer Want to Clone Giant Trees?**



**The Foundations That Work on Environmental Health, with an Eye on Building Power**



**When Outdoor Companies Band Together to Protect Wild Places**



**Before it's Too Late: A Wealthy Couple's Long Journey in Environmental Conservation**

April 10, 2019

0 Likes

Share

Facebook

Twitter

Email

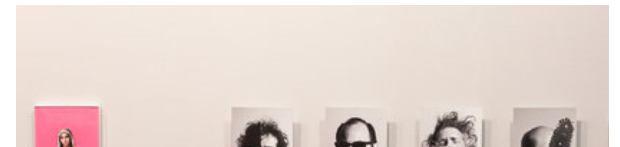
What a Foundation's Backing for ...

In a State with Deep Inequities, a ...

**Explore New Funders with IP's GrantFinder**  
Our Pathbreaking Guide to Top Grantmakers

Search Now

## EDITOR'S PICKS





**A Successful Program to Boost Diversity in STEM Gains a Wealthy Ally and Second Home**



**As Funders Abandon Support for Jewish Arts and Culture, Nonprofits Are Closing**



**With a Generation of New Donors Inheriting Trillions, How Can Nonprofits Boost Arts Giving?**



**Want Your Capital Campaign to Succeed? Here's Some Candid Expert Advice**



**How This Foundation Got Behind a Push to Bring Soccer Fields to Poor Kids Around the World**



**Torch: Behind a Business Intelligence Platform for Philanthropy and the Social Sector**





## Leaving Rikers: What a Foundation is Doing for Women in New York City's Worst Jail



## Census 2020: Inside Efforts to Make Sure Rural Communities Count



## Green Intermediaries: The Pooled Funds Connecting Donors to the Frontlines of Climate Change



**Follow the Money. Who's Funding What & Why**

[SUBSCRIBE TO IP](#)

[About](#) [Contact](#) [Help](#) [Login](#) [Privacy Policy](#) [Terms of Use](#)



**Follow the money! Get our daily email**

[Sign Up](#)



