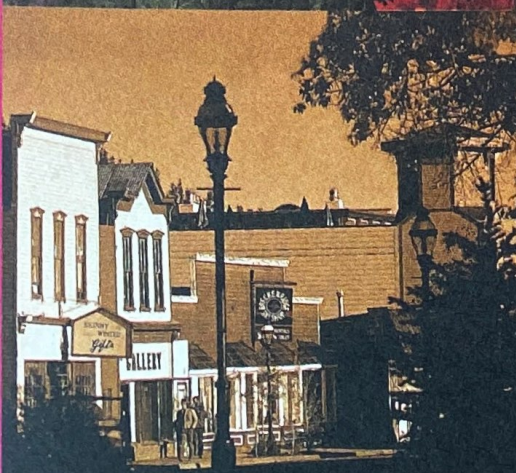
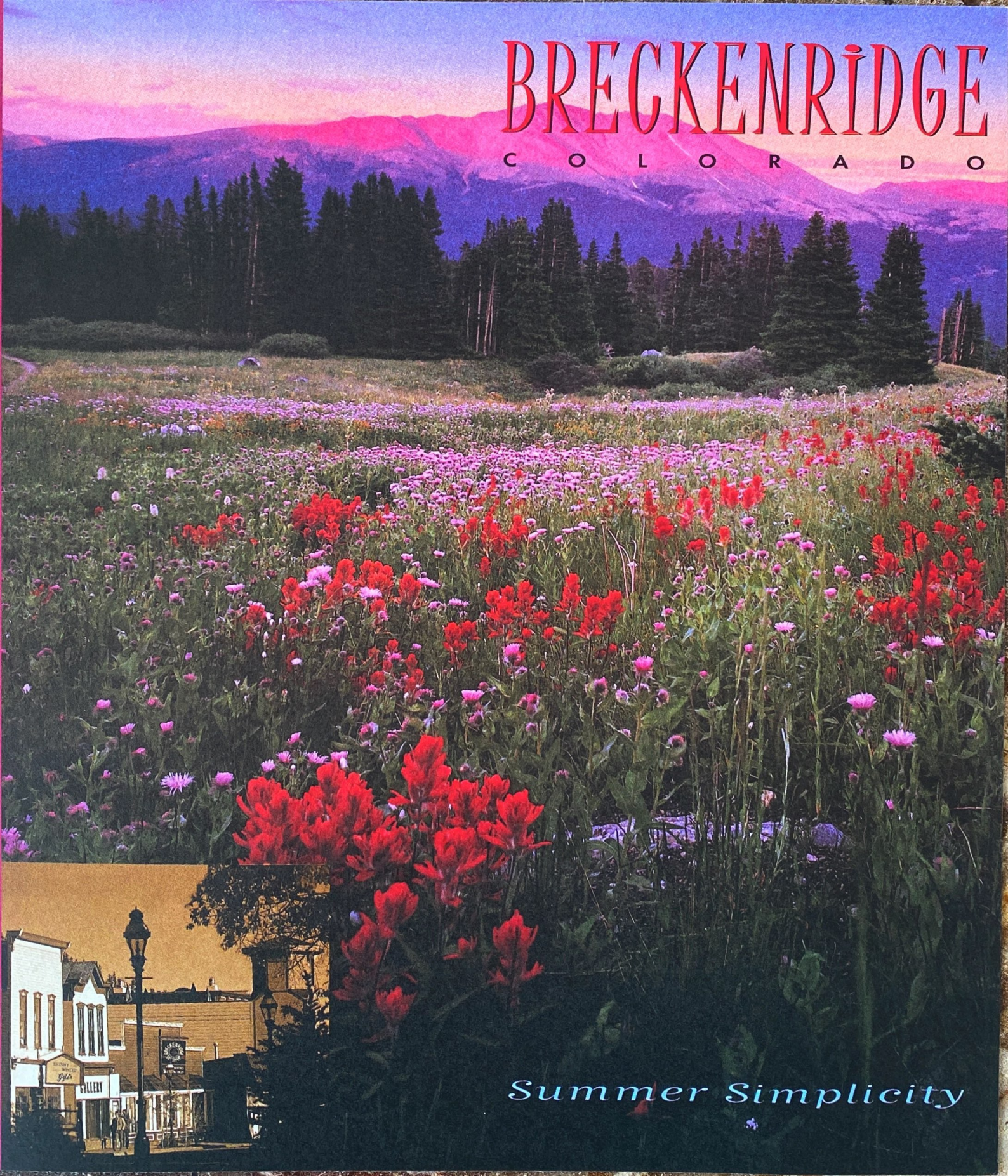


BRECKENRIDGE

C O L O R A D O



Summer Simplicity

Calendar of Events

May

29-30 - 14th Annual Taste of Breckenridge Weekend features food and wine tastings, concerts, seminars and demonstrations. Benefits The Summit Foundation. 970-547-3100.

30 - Sippin' and Swingin'
An evening of martinis and dancing to benefit The Summit Foundation. 970-547-3100.



31 - Memorial Day is traditionally the opening day of the Jack Nicklaus-designed Breckenridge Golf Club. 970-453-9104.

June

10-13 - 12th Anniversary Steve Watson Golf Classic. Benefits The Arthritis Foundation and The Summit Foundation. 970-453-9679.

18-20 - Rocky Mountain Antique Extravaganza at the Riverwalk Center. 970-547-3100.

26 - Breckenridge Music Festival Opening Night, the first concert in a two-month series of performances. 970-547-3100.

26-Aug. 14 - Breckenridge Music Festival. Two months of classical concerts featuring the National Repertory Orchestra and the Breckenridge Music Institute Orchestra and Chamber Ensembles. Tickets: \$5/child and \$20/adult. 970-547-3100.

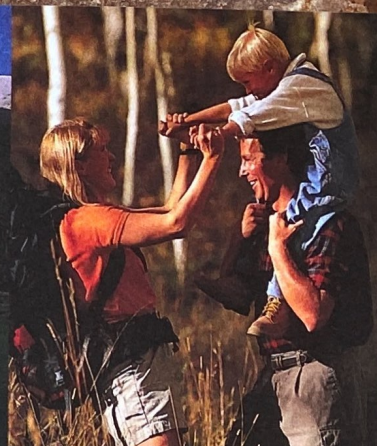
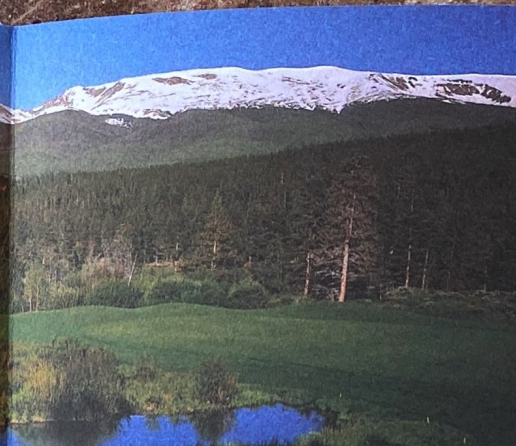
July

1-31 - Breckenridge Music Festival continues, with the NRO and BMI at the Riverwalk Center. 970-547-3100.

2-4 - The 16th Annual Breckenridge July 4th Fine Arts Festival. Rated in the top 100 art shows in the U.S. Located at the Bell Tower Mall. Free. 970-547-9326.

3-5 - Fourth of July Celebration complete with parade, water fights, kids activities, free concerts and fireworks. 970-453-6018.

9-11 - 15th Annual Genuine Jazz in July. Free daytime concerts on Maggie Pond's floating stage and paid nighttime admission performances in nearby clubs. 970-453-6018.



Customize Your Package to Include:
DISCOUNTED AIR · TRANSPORTATION · LODGING

BRECKENRIDGE CENTRAL RESERVATIONS

has established itself as a premier booking service for both domestic and international travelers. We represent 99% of the Breckenridge lodging community & can assure you accommodation choices:

COZY BED & BREAKFASTS · HOTEL ROOMS & SUITES CONDOMINIUMS · LUXURY HOMES

YOU OR YOUR TRAVEL AGENT SHOULD CALL THE BRECKENRIDGE EXPERTS TO BOOK COMPLETE PACKAGES!

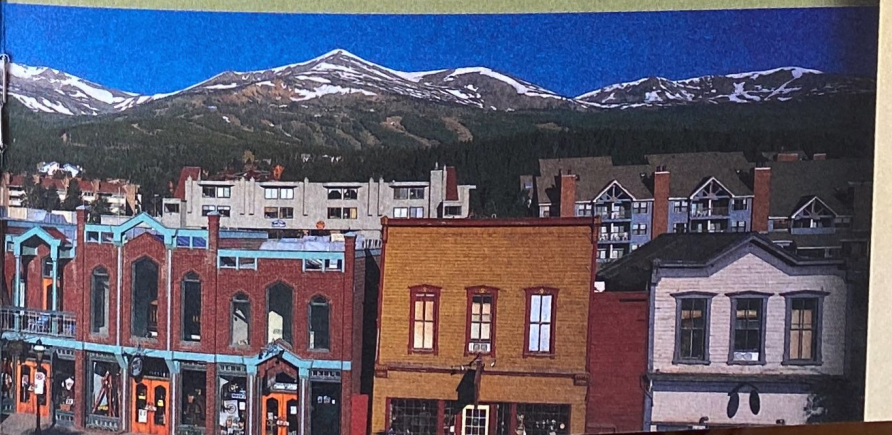
1.888.533.9880

www.gobreck.com · e-mail: gobreck@gobreck.com

ONE NIGHT FREE
WHEN YOU USE THE
AMERICAN EXPRESS® CARD
TO PAY FOR 4 NIGHTS.
GET THE 5TH NIGHT FREE!
Offer Expires 10/31/1999



AMERICAN EXPRESS
Cards



August

1-14 - Breckenridge Music Festival continues, with NRO and BMI at the Riverwalk Center. 970-547-3100.

5-8 - No Man's Land. Lore has it, Breckenridge was inadvertently left off from charted records. We mark the occasion with concerts, State Gold Panning and Wood Carving Championships. 970-453-6018.

7-8 - Mountain Art Gathering. A classic art show River Run in Keystone featuring 12 of America's leading fine artists, to benefit The Summit Foundation and celebrate their 15-year anniversary. 970-453-5970.

27-29 - Rocky Mountain Antique Extravaganza at the Riverwalk Center. 970-547-3100.

September

2-5 - Backstage at the Riverwalk. Enjoy the musical classic Guys and Dolls. 970-547-3100.

3 - Rubber Duck Race to benefit The Summit Foundation complete with a barbecue, entertainment and kids activities. 970-453-5970.

4-6 - The 24th Annual Gathering at the Great Divide Art Festival. Free Admission 10 a.m. to 6 p.m. 970-547-9326.

4-7 - 5th Annual Breckenridge Blues Festival marks the final event of the summer music series. 970-453-2000.

16-19 - The 19th Annual Breckenridge Festival of Film brings exceptional new filmmakers each year along with some of the industry's most recognizable stars. 970-453-6200.

24-26 Oktoberfest complete with Bavarian food, German beer, lederhosen and oompah music. 970-453-6018.

October

31 - Breckenridge Ski Resort Tentative Opening. For job opportunities please call Jobline: 888-SKI-JOB1



On the Mountain...

SuperSlide™

Ride the famous SuperSlide! Ride the slalom courses or try the steeper giant slalom track with multiple dips for the more experienced rider. The sleds will seat an adult and a small child. Children under the age of 18 need a parent or guardian's signature to participate.

* Rates below

SuperPutt™

Challenge yourself on our newly improved mini golf course. Get a few tips from the resident Pro, Toby, and work on your short game.

\$6.00 per person.

Giant Maze

Don't miss Colorado's largest human maze, Amaze'n Breckenridge. Try to beat the clock through the wild and zany two level labyrinths of twists and turns. \$4 - Adult/\$3 - Child

Children's Center

Reservations are required for daycare. 970-453-3258.

Colorado SuperChair™ Scenic Lift Rides and Hiking

Ride to 11,059 ft. on the Colorado SuperChair for easy access to hiking, biking trails and the Vista Haus Restaurant.

\$5 - Adult/\$3 - Child/Senior

Horseback Riding

Breckenridge's Stables offer the "Breckenridge Trail," 90 minutes of spectacular scenery and breakfast rides daily. For pricing, reservations and more information, call 970-453-4438.



Mountain Adventures*

SuperSlide™ Rates*	Adult (ages 13+)	Child (ages 7-12)
1 Ride / 1 Person	\$ 8.00	\$ 7.00
Multiple ride prices are available at the Breckenridge Ticket Offices. *Participants, under the age of 18, need a parent or guardian's signature on release waiver.		
Mountain Bike Lift & Trail Pass	Adult (ages 13+)	Child (ages 7-12)
1 Ride w/ own bike	\$ 8.00	\$ 6.00
All Day w/ own bike	\$ 18.00	\$ 12.00
Activity Pass Rates*	Adult (ages 13+)	Child (ages 7-12)
All Day	\$ 42.00	\$ 42.00
*Activity pass includes unlimited usage of the SuperSlide, SuperPutt, Colorado SuperChair, and bike transport on the Colorado SuperChair. Activity pass does not include bike rental. Based on availability. Participants, under the age of 18 need a parent or guardian's signature on release waiver.		

Prices subject to change. For group rates call: 800-789-SNOW



Breckenridge Mountain Bike Park

Site of the 1998 NORBA National Championship Series. Sensational Rocky Mountain scenery and that famous Colorado sunshine make an irresistible combination for mountain biking. Breckenridge Ski Resort offers a wide variety of trails to all ability levels. Summer Trail maps are available at the base area and Vista Haus. New mountain bikes are available to rent at the Peak 8 base area.

Bike Rental	Adult (ages 13+)	Child (ages 7-12)
Front Suspension - All day	\$ 26.00	\$ 14.00
Full Suspension - All day	\$ 30.00	
Hourly and half-day rates are available. Includes bike helmet. Trail Pass not included. Prices subject to change. Call 970-496-7546.		



In Town...

Visit one of Colorado's Largest Historic Districts

- 40 Miles of Bike Trails
- River Rafting
- Jack Nicklaus Designed 18 Hole Golf Course
- Gold Panning
- Historic Mine Tours
- Outdoor Concerts
- Weekend Festivals
- Fine Art Galleries
- Carriage Rides
- Over 200 Restaurants and Shops

Activity Center:
970-453-5579

Info Center:
970-453-6018