

WORDS // KATE EVANS PHOTOGRAPHY // TIM TURNER

Nestled away in the busy hub that is Melbourne is a beautiful, expansive garden designed to be an oasis from the bustling city that surrounds it. Created by COS Design for a family of five, there had to be room for the kids to have their fun as well as space for the parents to entertain.

Listing a pool as a must-have, Steve Taylor of COS Design was tasked with the challenge of finding a way to integrate the pool into the design without dominating the space. This was done by designing an elevated structure that ran down one side of the garden and part of the house, ensuring there was still ample space for lush greenery and timber accents. Spanning 9 metres long and incorporating a 1.8-metre lap lane, there's also a spa for the family to enjoy throughout the seasons.

Various shades of grey were chosen for the tiling, which reflect the scheme of the house's exterior. The spa continues this aesthetic, and is clad in dark glass mosaic tiles and sits in a chunky polished concrete plinth that reflects the city in which it is situated.

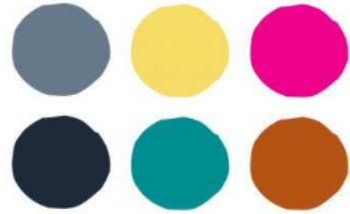
Touches of oriental greenery, such as slender weavers bamboo, is planted along

the back garden's perimeter, providing privacy and adding to the Zen atmosphere of the space. A timber deck is also present, which offers a place to entertain, dine and relax. To facilitate dining under the stars, a barbecue and pizza oven are located in the rear corner of the deck, providing ample opportunity for dinner parties. Residing in the middle of the deck is a mature ash tree, which Steve specifically retained as a focal point while designing the space. Although scooping the leaves out of the pool can be a chore, the abundant shade it provides will always be a plus in any parent's eyes. For the finishing touches, soft yellow lighting is used throughout, which offsets the rigid lines of the recycled hardwood utilised for the arbour alongside the pool, and the rough-sawn silvertop ash selected for the rear water feature screen.

This back garden, which beautifully incorporates elements for fun and relaxation, has been designed to be incredibly practical, allowing this family of five to enjoy time together outdoors all year round. 🌿
cosdesign.com.au

ABOVE Timber decking is an extension of the home's interior aesthetic

OPPOSITE A remarkable pool is the standout feature of this backyard



Colour Palette

Earthy browns and oranges of brick and timber are complemented by steel grey tiles and the concrete of the pool, giving the water a deep teal colour. The bright pink in the furniture offers a modern twist

LISTING A POOL AS A MUST-HAVE, STEVE TAYLOR OF COS DESIGN WAS TASKED WITH THE CHALLENGE OF FINDING A WAY TO INTEGRATE IT INTO THE DESIGN WITHOUT DOMINATING THE SPACE

