



White NOISE

A TOUCH OF GLAMOUR TAKES THIS BATHROOM TO A NEW LEVEL

WORDS // KATE EVANS

On the top floor of a 1920s grand Sydney home sits a luxuriously sprawling bathroom that combines the classic elements of the suburb's architecture with a touch of contemporary glamour.

With a large space that originally seemed overwhelming, the homeowners were keen on the idea of a walk-in double shower, which now serves as the central feature of the bathroom. Beautiful marble-look tiles were used in the shower, which are tiled flawlessly to ensure the veins flow unobtrusively.

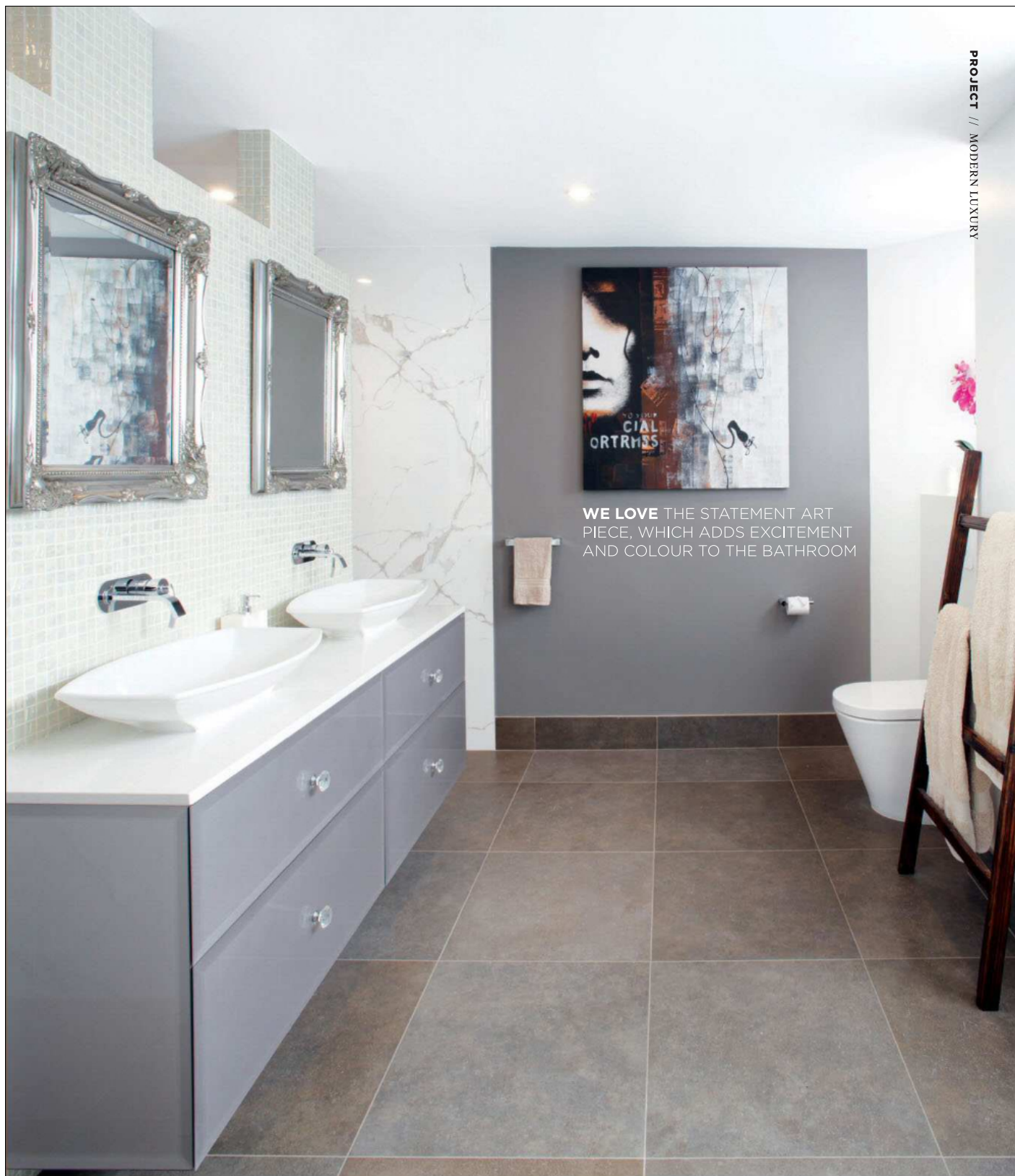
"Large-format tiles were chosen for the walls and floor to keep it from feeling too cavernous,"

says Brindabella Bathrooms designer, John Spiteri. The muted colour scheme is reflected throughout the entirety of the bathroom, with touches of dark grey and pristine, cool white covering the walls. "Other walls were painted to provide relief from the effect of the tiles, which would have overwhelmed the room had they been used on all walls," says John. A dark grey wall created the perfect opportunity for the homeowners to personalise the space, with a striking painting featuring a shadowed face hanging high on the wall.

These elements of modernity are contrasted with the space's accessories, which have a glamorous feel to them. A pair of 1920s ornate

mirrors hang above the vanity, with the crystal-cut glass knobs adding to the ambience.

Small yet significant efforts to include the flora of the suburb were made. A recycled timber step in spotted gum was mitred on-site and given a bullnose edge to suit the style of the home. Foregoing mounted towel racks, a dark wooden ladder is propped against a wall, reiterating the natural feel. "This ensuite bathroom was specifically designed to meet the owners' requests for a space with plenty of luxury inclusions," says John. "Much thought was given to the layout of the room to ensure the large space was used effectively." 🌿 brindellabathrooms.com.au



WE LOVE THE STATEMENT ART
PIECE, WHICH ADDS EXCITEMENT
AND COLOUR TO THE BATHROOM