

# NB

NEWPORT BEACH MAGAZINE

FALL 2021

## FALL FASHION SPECIAL SECTION

### FASHION FLASHBACK

TRENDS FROM THE '90S MAKE A COMEBACK

### DENIM DAYS

JEAN STYLES FROM HIGH WAISTS  
TO LOOSER CUTS FOR FALL

### LUXE LOOKS

LOCAL DESIGNERS AND CLOTHING  
CURATORS SHARE THEIR INSPIRATIONS

### BACK ON THE BIG SCREEN

NEWPORT BEACH FILM FESTIVAL  
RETURNS THIS FALL

### GOOD AS GOLD

GETTING TO KNOW THE  
FOUNDERS OF GORJANA JEWELRY





# THE SHAPE OF THINGS TO COME

Lines, curves and angles characterize the geometric interior design trend, which makes a stylish statement in any living space.

BY THERESA BOEHL

From dramatic sharp angles to dazzling repeated motifs, geometric patterns have taken the interior design world by storm in the last few years. Unlike the patterns found in nature, these are themes you are more likely to recognize from geometry class: triangles, squares and hexagons, for example. The bold patterns make a splash in any room and can be incorporated in everything from furniture to light fixtures. While the geometric trend gives interiors a fresh, up-to-the-minute look, Erica Bryen, owner and principal designer at Newport Beach-based Erica Bryen Design, says this craze isn't new.

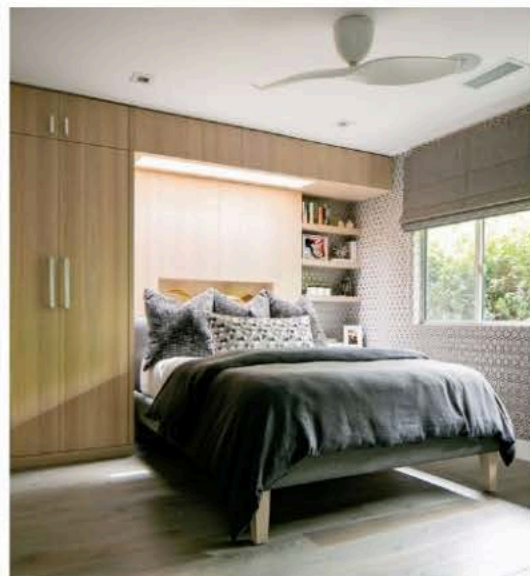
"Commonly, trends like this tend to repeat every 10 to 15 years. This is why we are seeing geometric elements in design being used very often today," she says. "However, if you look back in history, geometric elements have been used in ancient Greek, Roman and Moroccan empires ... not only [for] interiors but also in their [architectural] styles. It's honestly a timeless trend."

Decor incorporating geometric design can help achieve interest, depth and masculinity, Bryen says. For a simplified, clean look, stick to accessorizing your space with geometric-inspired coffee-table books, candles, throw pillows, picture frames or art.

For those willing to commit 100% to geometric design, hard-finished and upholstered elements, such as tiles, wallpaper and furniture, can make for a striking aesthetic. "A side chair is a great way to incorporate a splash of fun and interest," Bryen says. Go for stripes, rich patterns or unique shapes

and colors to have the greatest impact, she advises.

Whether you're planning a subtle nod to the trend or are going all in, remember to keep the bigger picture in mind. Envision how all the elements will come together so you don't end up with a space that's too busy, Bryen says. Keep your materials and patterns on hand as you plan and visualize. And don't be afraid to have a little fun. "People tend to be scared of pattern[s] and bold colors. However, to achieve an interesting design, one must not select in a place of fear."



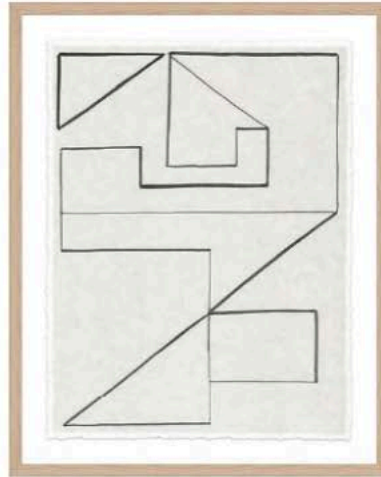
Geometric patterns have become increasingly popular in the interior design world as of late.

## CUT A FINE FIGURE

ADD PERSONALITY AND PIZAZZ TO YOUR SPACE WITH THESE GEOMETRIC-INSPIRED ACCESSORIES, AVAILABLE AT LOCAL SHOPS.



With a delicate rounded shape, lovely Capiz shells and eye-catching gold tones, the **SCALLOPED CAPIZ HURRICANE PILLAR** makes the perfect candleholder for adding subtle textures to your space, \$178 for a set of two, at Serena & Lily, Lido Marina Village. (949-287-5764; serenaandlily.com)



A medley of connected triangles, rectangles and squares, "**LINING UP I**" is an understated piece for tying together the geometric theme in a room, and with a wet deckled edge and off-white kozo paper, it incorporates subtle natural touches, \$898, at Tiffany Hunter Home, Fashion Island. (949-718-1476; tiffanyhunterhome.com)



Artisans in Bangladesh spent three days weaving the **KARA TRAY**, featuring coils made from date palm, and each storage tray includes a short bio of the artist and a unique code to learn more about that person, \$45, at Room & Board, Costa Mesa. (714-549-5995; roomandboard.com)



Stylish in any room, the **JAKARTA CHEST WITH STONE TOP** features four adjustable shelves, a custom-designed door pull and a honed travertine top that adds a touch of elegance, \$2,449, at Tommy Bahama Home, Fashion Island. (949-239-7171; tommybahamafurniture.com) NBM



Oozing multicolored art deco flair and backed with white Pindler fabric, this **CUSTOM APRICOT THROW PILLOW** will give your bedding or sofa that extra bit of oomph, \$335, at Heirloom. (949-515-2500; heirloomdecor.com)