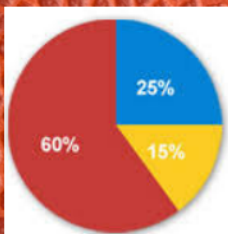
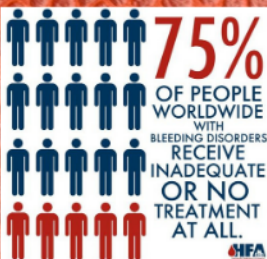




LOUISIANA HEMOPHILIA FOUNDATION

1 in 17 people will be affected by a rare disease at some point in their life.



Degrees of Hemophilia A:²

- Mild (% cases)
- Moderate (% cases)
- Severe (% cases)

Who we are:

We are a non-profit organization that assists those affected by inherited bleeding disorders.

Our team:

We are a passionate group of members who share a common goal. Our hard-working team is continuously making strides for our community.

What we do:

- Annual Meeting
- Donor Meeting
- Holiday Parties
- Poinsettia Sale

Contact information:

- lahemo.org
- contact@lahemo.org
- 225.291.1675

1 in 10,000

born with Haemophilia A
a lack of clotting factor VIII¹⁰

1 in 50,000

born with Haemophilia B
a lack of clotting factor IX¹⁰



LOUISIANA
HEMOPHILIA FOUNDATION