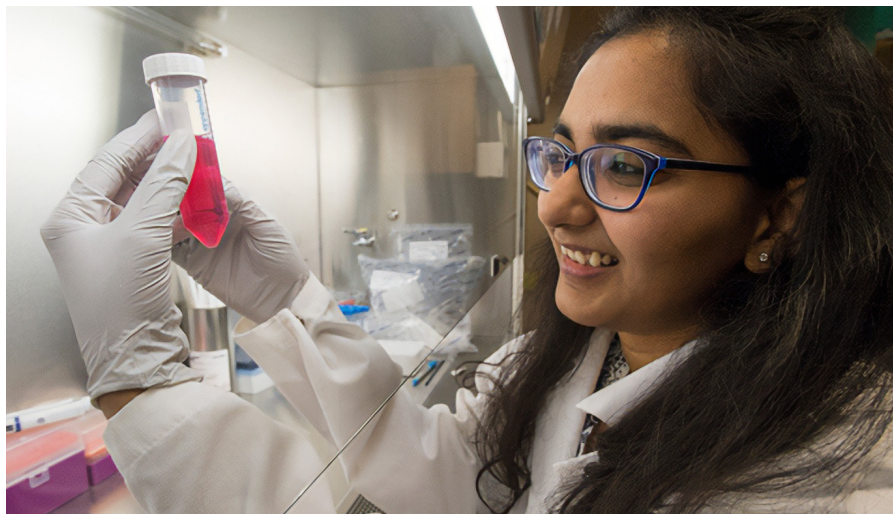




Affordable Education in a top 5 US destination



High Achiever Tuition:

At SIU, we reward academic achievements. Through our High Achiever Tuition rate, you can reduce the cost of your degree with us.

Requirements

Undergraduate / First-year students	SAT 1,240 or	ACT 26 or	Overall GPA 3.5+
Transfer	3.0 on at least 26 transfer credits or 39 transfer quarter hours. If students have less than 26 credits, they must have a 3.5 GPA.		
Graduate	GRE Verbal Reasoning score or GRE Quantitative Reasoning score or GMAT score or MAT score in the 80% percentile rank or higher.		

Top 4.8%
of the Global 2,000 List
*Center for World University
Rankings 2024*

#1
Best Engineering
Technologies Bachelor's
Degree Schools in Illinois
College Factual 2025

#8
in the List of 100 Best
Universities in Illinois
EduRank 2024

#20
Colleges with the Best
Student Life in Illinois
Niche 2025

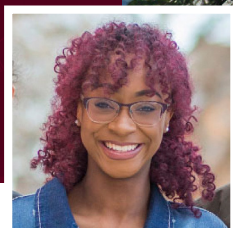
**COST OF LIVING
IN CARBONDALE
IS 8% LOWER
than the national average**
Payscale 2024



SCAN TO LEARN MORE ABOUT STUDYING AT
Southern Illinois University

INTO

Why choose SOUTHERN ILLINOIS UNIVERSITY?



WE CREATE OPPORTUNITIES FOR FUTURE LEADERS AND INNOVATORS

Southern Illinois University is a place where outstanding teaching fuels creativity, research and personal growth. We're located in Carbondale, Illinois. The state is one of the **top five destinations for international students in the US**. You can choose from more than **200+** majors, minors and specializations across eight colleges.

- We're a Carnegie-classified research university. We emphasize hands-on learning and research opportunities.
- Illinois is home to **32 Fortune 500** companies. Our graduates can work at major companies like **Walgreens Boots Alliance, State Farm Insurance, Deere, United Airlines Holdings** and more.
- Illinois is among the **Top 10** states for IT jobs in the US, according to *Indeed 2024*.

- Illinois is home to **four out of 10 National Quantum Information (NQI) Research Centers**, the most of any state. Be part of the next big leap in tech and quantum computing.

Greater affordability

The cost of living in Carbondale is 8% lower than the national average, according to *Payscale 2024*.

What is the cost of living in Carbondale compared to other US cities?*

- **149%** lower than New York City (Manhattan)
- **85%** lower than San Francisco
- **58%** lower than Seattle

*According to the Forbes cost calculator using a pre-tax annual salary of \$100,000

Take flight at the School of Aviation

Graduates of the AAS degree in Aviation Flight (AF) begin flight training in their first semester. They earn the certifications needed to become pilots for airlines, charters, aerial surveys and other operations. Airline and commercial pilots earn a median annual salary of **\$171K**, according to the *U.S. Bureau of Labor Statistics 2023*.

Build your future in computer science

Our computer science graduates have nearly **100%** job placement. Explore exciting opportunities in video game development, artificial intelligence and hardware/software engineering.



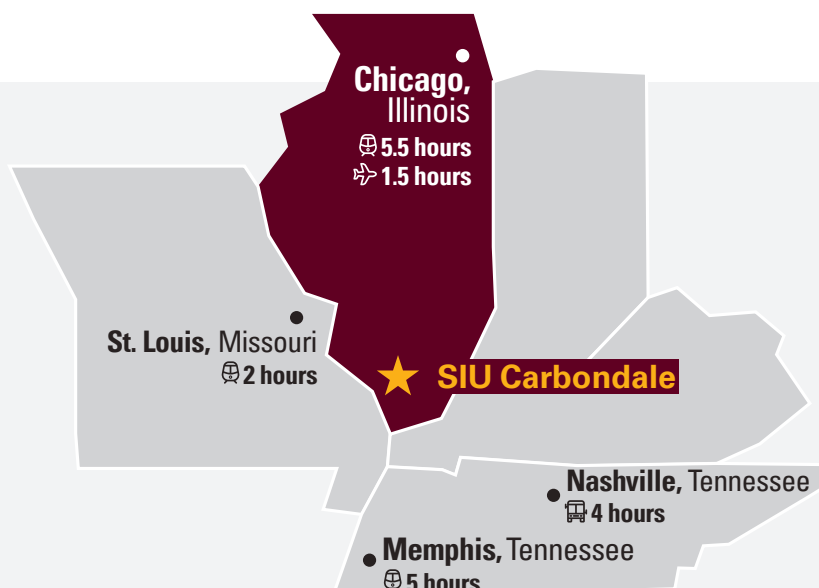
Scan to explore
our programs.

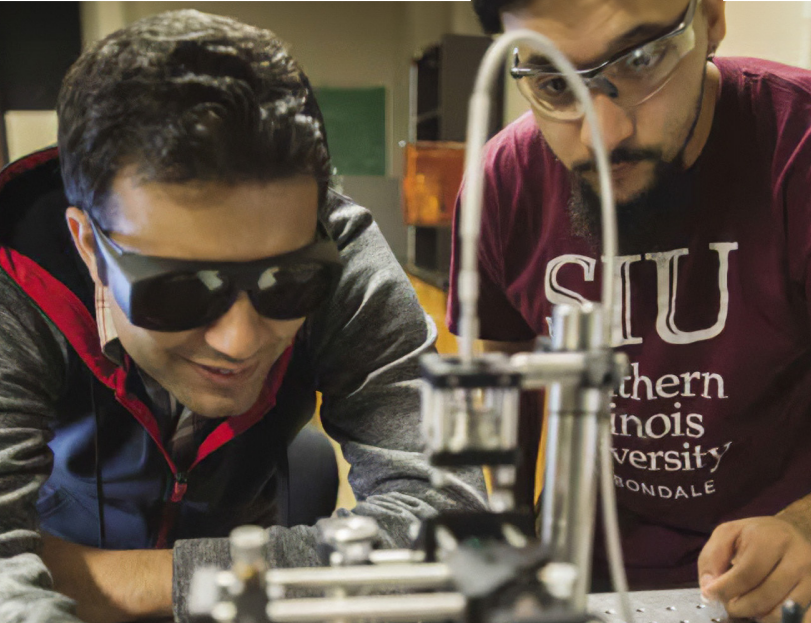
CARBONDALE: centrally located with a small-town charm

Carbondale has the lively activities of a larger city. Yet, it keeps its small-town charm. The city is ranked one of the cutest small towns in Illinois, according to *World Atlas 2023*.

Check out our nearby attractions:

- Explore scenic lakes, bike trails, a national forest and golf courses.
- Enjoy cultural activities like concerts and live theatre.





300+

registered student organizations

From publication and media groups to fraternities and sororities, there's a student organization for every interest.



LAUNCH YOUR CAREER IN ILLINOIS

Studying at Southern Illinois University means you can start your career in Illinois. The state had the fifth largest economy in the US in 2023, according to the *Bureau of Economic Analysis*. Illinois' economy is also extremely diverse. There is a strong focus on manufacturing, technology, finance and business.

You can find internship and career opportunities in nearby Chicago. Aside from its strong job market, Chicago is also more affordable compared to other major American cities.

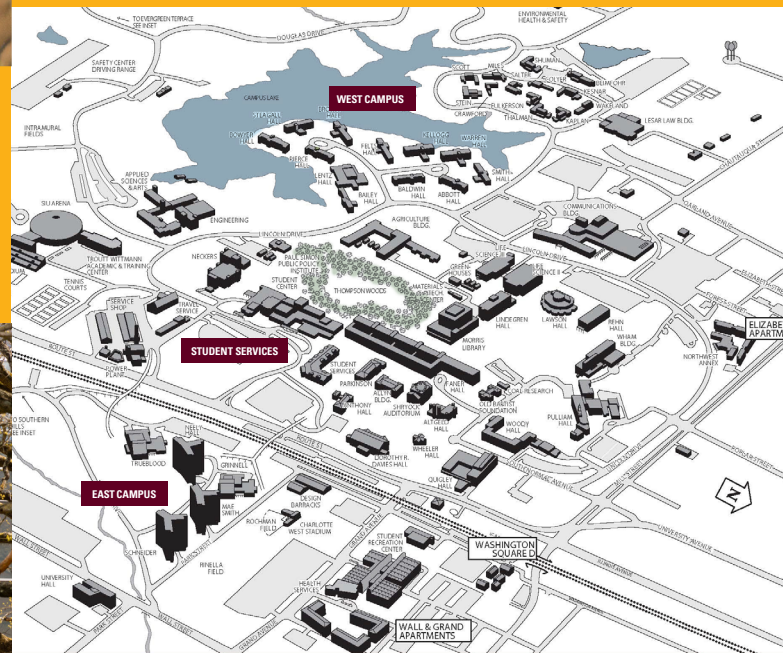
Co-ops and internships

- Engineering students can take part in co-ops and internships at **Caterpillar Inc., IBM, Boeing, Ameren** and more.
- Computer science students can intern at **Apple, AT&T, Google, Microsoft, NBC Universal** and more.
- Search for internship opportunities on **HIRE A SALUKI, powered by Handshake**.



\$111K

Average mid-career salary for a graduate of Southern Illinois University with a bachelor's degree, according to *Payscale 2024*.



Take a virtual tour of the **Southern Illinois University** campus.



ACADEMIC PROGRAMS

B = Bachelor's

M = Master's

STEM-designated programs

COLLEGE OF AGRICULTURAL, LIFE AND PHYSICAL SCIENCES

- Agribusiness Economics (B, M)
- **Animal Science** (B, M)
- Biochemistry (B)
- Chemistry (B, M)
- Crop, Soil and Environmental Management (B)
- Fermentation Science (B)
- Forestry (B, M)
- Geography and Environmental Resources (B)
- Geology (B, M)
- Horticulture (B)
- Microbiology (B)
- Physics (B, M)
- Plant Biology (B, M)
- Zoology (B, M)

COLLEGE OF ARTS AND MEDIA

- Architectural Studies (B)
- Architecture (M)
- Art and Design (M)
- Cinema (B)
- Fashion Studies (B)
- Interior Design (B)
- Journalism (B)
- Mass Communication and Media Arts (M)
- Media Theory and Research (M)
- Music (M)
- Professional Media and Media Management Studies (M)
- Theater (B, M)

COLLEGE OF BUSINESS ANALYTICS

- Accountancy (M)
- Accounting (B)
- **Business Analytics** (B)
- **Econometrics and Quantitative Economics** (B)
- Economics (B, M)
- Finance (B)
- Hospitality, Tourism and Event Management (B)
- **Management** (B)
- Marketing (B)

COLLEGE OF ENGINEERING, COMPUTING, TECHNOLOGY AND MATHEMATICS

- Biomedical Engineering (B, M)
- Civil and Environmental Engineering (M)
- Civil Engineering (B)
- Computer Engineering (B)
- Computer Science (B, M)
- Cybersecurity and Cyber Systems (M)
- Cybersecurity Technology (B)
- Electrical and Computer Engineering (M)
- Electrical Engineering (B)
- Industrial Management and Applied Engineering (B)
- Information Technology (B)
- Mathematics (B)
- Mechanical Engineering (B, M)
- Quality Engineering and Management (M)
- Statistics (B)

COLLEGE OF HEALTH AND HUMAN SCIENCES

- **Automotive Technology** (B)
- Aviation Flight (B)
- Aviation Management (B)
- **Aviation Technologies** (B)
- Behavior Analysis and Therapy (M)
- Communication Disorders and Sciences** (B, M)
- Counseling and Rehabilitation Education (M)
- Criminology and Criminal Justice (B, M)
- Dental Hygiene (B)
- Exercise Science (B)
- Health Administration (M)
- Health Informatics (M)
- Healthcare Management (B)
- **Human Nutrition and Dietetics** (B)
- Human Sciences (M)
- **Mathematics** (M)
- Mortuary Science and Funeral Services (B)
- Physical Therapist Assistant (B)
- Psychology (B)
- Public Health (B)
- Radiologic Sciences (B)
- Recreation Professions (B)
- Social Work (B, M)
- Sports Administration (B)

COLLEGE OF LIBERAL ARTS

- Africana Studies (B)
- Anthropology (B)
- Communication Studies (B, M)
- Creative Writing (M)
- English (B, M)
- German Studies (B)
- History (B, M)
- Languages, Cultures and International Studies (B)
- Linguistics (B, M)
- Philosophy (B, M)
- Political Science (B, M)
- Sociology (B, M)
- Spanish (B)
- Teaching English to Speakers of Other Languages (M)
- University Studies (B)

SCHOOL OF EDUCATION

- **Biological Sciences** (B)
- Child and Family Services (B)
- Curriculum and Instruction (M)
- Early Childhood Education (B)
- Educational Administration (M)
- Higher Education (M)
- **Organizational Learning, Innovation and Development** (M)
- Special Education (B)

SCHOOL OF MEDICINE

- **Multidisciplinary Biomedical and Biological Sciences** (M)
- Physician Assistant Studies (M)

*Programs listed are **STEM**-designated at the undergraduate level only.

Programs listed are **STEM-designated at the graduate level only.

This is not a comprehensive list of all available majors. For our complete program catalog, visit www.academics.siu.edu

FAST FACTS

FOUNDED: 1869

ENROLLMENT: 11,790

INTERNATIONAL STUDENTS: 853

BACHELOR'S: 200+

MASTER'S: 70+



SCAN THE QR CODE

for estimated tuition, fees, start dates and scholarships.

INTO