

Peters, Larissa

From: Sean L. Callahan, Catholic Relief Services <community@support.crs.org>
Sent: Monday, June 13, 2022 11:31 AM
To: Peters, Larissa
Subject: Four months later ... you're still helping Ukrainian families



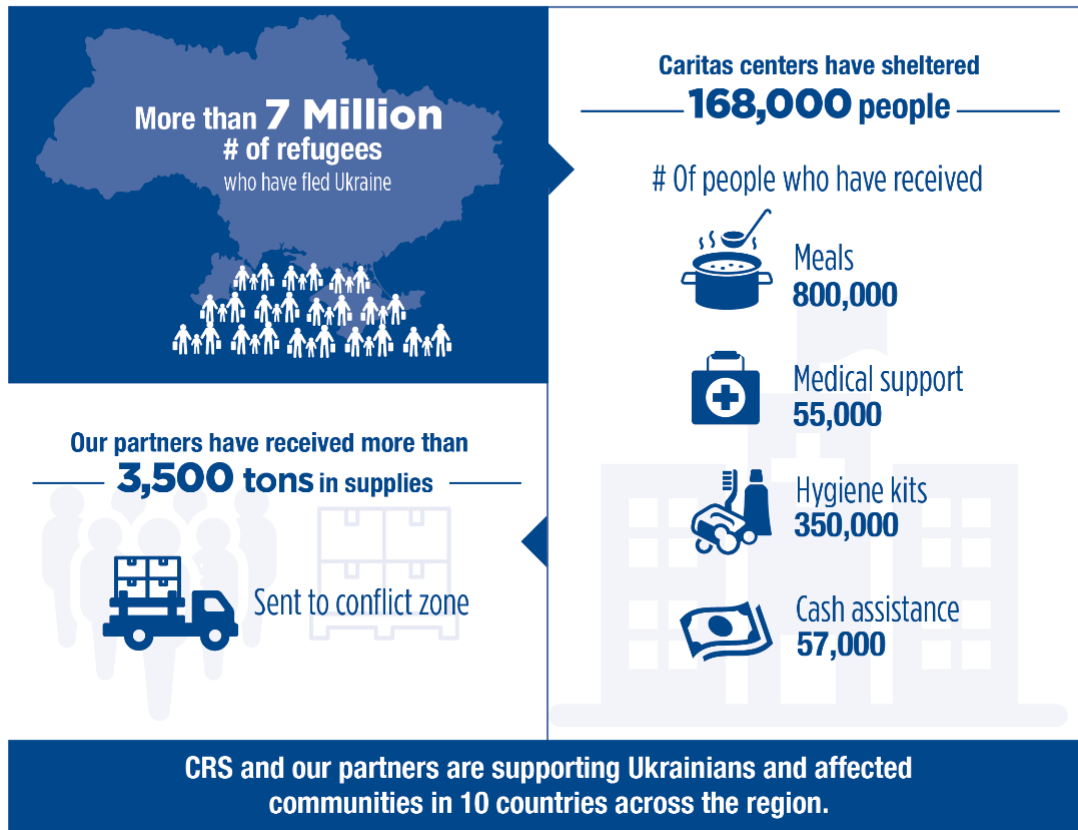
Dear Larissa,

On February 24, Russia invaded Ukraine and we witnessed one of the fastest-moving humanitarian crises in recent memory. The numbers speak for themselves. **More than 3.8 million people—greater than the population of Connecticut—fled Ukraine in less than a month.**

Now, four months later, that number is more than 7 million.

Neighboring countries demonstrated remarkable hospitality, with limited resources, providing a safe place—a home—notably for Ukrainian mothers, children and elderly family members. **You, Larissa, and so many here in the United States, demonstrated overwhelming generosity helping mothers and children find shelter and welcome.**

UKRAINE CRISIS: CRS & Partner Response



But even as we pray for this war's end, there is still much to be done.

Countries like Moldova, Poland and many others across the region are welcoming thousands of families. CRS and local partner reception sites provide safe shelter, hygiene kits, warm meals and counseling. Cash assistance is being provided to both refugees and host families.

Your gifts are helping to bring relief and offer comfort, care and a sense of home as families navigate a time of great pain and uncertainty. Thank you!

June 20 is World Refugee Day, a day where we remember refugee families who face unimaginable challenges like those in Ukraine and around the world. **We honor their resilience and the people who welcome them with open arms.**

Peace and light,



Sean L. Callahan

Sean L. Callahan
President & CEO
Catholic Relief Services

Thank you for your support!

P.S. How are we doing? As one of our loyal supporters, your feedback is important to us. **Please take our short survey.**

Photo courtesy of Marijn Fidder/Caritas International



© 2022 Catholic Relief Services
228 West Lexington Street, Baltimore, Maryland 21201-3443
community@crs.org | 877-435-7277



[Update email preferences or unsubscribe](#) | [privacy policy](#)

