

RESOURCE PRO RECOGNIZED IN THE TOP 1% OF FASTEST GROWING U.S. COMPANIES BY INC 5000



DIVERSITY, EQUITY, AND INCLUSION

Learn how we're building a welcoming environment at ReSource Pro.

HOME > CORPORATE > DIVERSITY, EQUITY, AND INCLUSION

OUR COMMITMENT

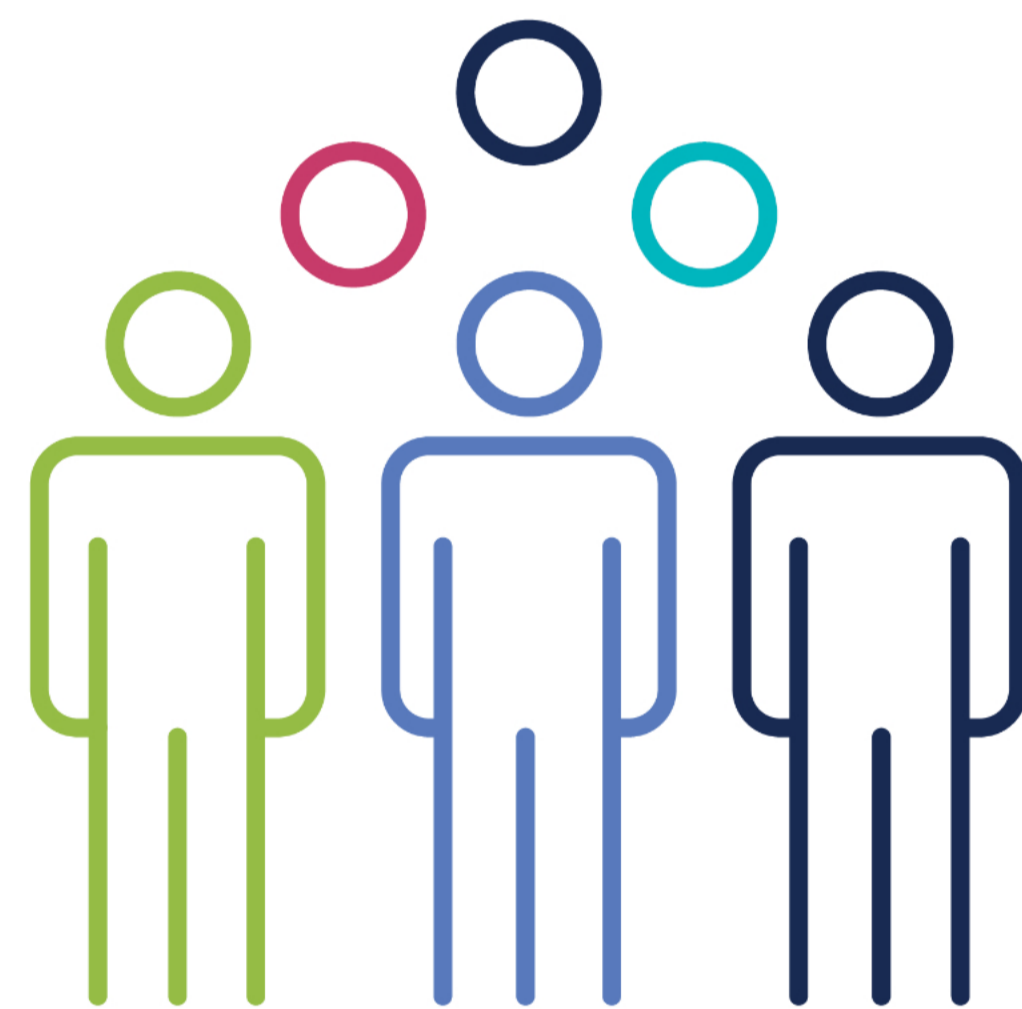
At ReSource Pro, we strive to foster a culture in which people of all backgrounds can flourish and feel comfortable, safe, supported, and accepted in their identity. We believe in celebrating every individual's uniqueness, empowering them to achieve their best self, and ensuring they feel a sense of belonging at all times.

Nurturing an equitable, diverse, and inclusive workplace is a continuous journey, and there's still work to be done, but we're committed to seeing it through. When people from different walks of life come together, the greatest successes and innovations tend to follow.



HOW WE'RE MAKING PROGRESS

We've partnered with race and equity experts to create an environment where employees of all backgrounds can thrive. Together with our partners, we are executing a diversity and inclusion action plan and reviewing and revising our policies and procedures to ensure that we have a workplace in which all of our employees feel they are welcome and valued and have a personal stake in the success of ReSource Pro.



DRIVING MEANINGFUL CHANGE

We're hard at work driving continuous and meaningful improvement within our organization.

Diversity, Equity, and Inclusion Council

Comprised of employees who represent each of our departments, our council ensures that DEI values remain a facet of every part of our operations, even as our company continues to grow and evolve.

eLearning Program

With comprehensive eLearning sessions for employees, we foster constructive discussions on race, understanding, and implicit bias, empowering our team to address these issues with empathy and respect.



BUILDING A BETTER TOMORROW

If you're interested in joining us, check out our open jobs

[LEARN MORE](#)



SOLUTIONS

Services
Specialized Solutions

SERVICES

- > Business Process Management
- > Operations Optimization
- > Talent Performance
- > Analytics

CORPORATE

About Us
Management Team
Our Clients
Events
Careers
Resources
In the News
Blog

INSURANCE MARKETS

Retail Agent
Wholesaler
MGA
Carrier

CORPORATE HEADQUARTERS

60 East 42nd Street
Suite 1500
New York, NY 10165
1-888-577-7552

