



SHOCK: Colin McGrath

GoT beauty spots set to get turbines

By **RICHARD SULLIVAN**

A ROW has flared over plans to erect a cluster of wind turbines in villages dotted around one of the most beautiful parts of Strangford Lough.

SDLP MLA Colin McGrath has slammed plans to erect wind turbines of up to 190ft overlooking the mouth of the lough, in areas which have been used extensively to film scenes for the hit TV show, Game of Thrones.

The Lough area, pictured below, has been enjoying a huge spin-off from TV tourism, sparked by Game of Thrones, and has largely avoided the appearance of the masts up to now. But applications for turbines have now been lodged for the Saul, Strangford and Ballyhoran areas.

"These turbines have a place but so many located in such a cluster



so close to and within an area of outstanding natural beauty is worrying," said Mr McGrath.

"One has to question what price the developers put on our natural beauty.

"Our natural beauty is an asset with shows such as Game of Thrones and other programmes filmed in our area because of its beauty and unspoilt horizon."

Mr McGrath said he is concerned that nine separate applications have been lodged for a small area at the southern end of the lough.

"This will become a blight on our landscape. I will be working with local residents who are opposed to these to ensure the most robust possible interrogation of these plans."

The Down area has experienced a tourism boom as fans of the HBO award-winning series from across the world flock to follow in the steps of the TV stars.

Tourist bosses have drawn up their own location map for the Down area pointing out the dramatic landscapes representing scenes from the TV series. Many of these sites are close to the proposed turbine sites.

They include Winterfell located at Castleward; Robb Stark's camp at Audley's field near Strangford and Riverun - the Quoile River in Downpatrick, the setting for Rob's victory in season one.

ANOTHER SUNDAY WORLD EXCLUSIVE

IT'S A MARATHON EAT-ATHON



COUNTDOWN: Tony O'Neill, Jane Sally and Jenny Curran. Right: Jane's all set



Heath guru Jenny plans a 26.2 hour grubfest to raise funds for manager Jane's race charity

By **AMY LEONARD**
Pics: **CONOR MCCAUGHLEY**

JENNY Curran is running a marathon with a difference.

This one's going to take her more than 24 hours and she'll finish it without leaving work!

Health hound Jen and fiancé Tony O'Neill will be behind the counter of their south Belfast eatery Tony & Jen's for a marathon 26.2 hours - guilt-free grub round the clock.

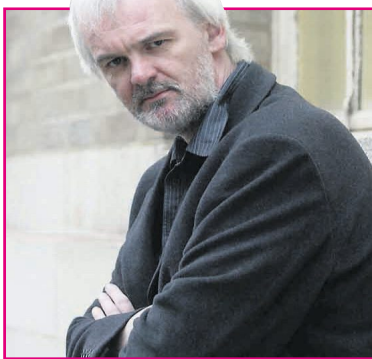
And they're roping in a host of pals to do a shift pulling espresso, slinging pancakes and rolling peanut balls into the wee small hours.

Comedian Tim McGarry is aiming to get down for an early morning stint as is the Peanut Girl herself, former Miss NI Tiffany Brien.

And it's all for a good cause - they're supporting their manager Jane Sally as she prepares to take part in the Amsterdam Marathon in October, raising funds for Marie Curie.

Jane, 23 will be pounding the street of the Dutch capital with brother Hugh, 37, and sister Kathryn 30.

"It's always been on the bucket list, (to run a marathon) and my two brothers have previously done one, so when Hugh signed up for Amsterdam I thought, why not?"



PROMISE: Comic Tim McGarry

She signed up for it in January, and then promptly broke her ankle in February, so easy is not the word to describe her journey to this stage.

Despite a whole heap of doubts, her training is on track and she's hoping to raise as much as possible for Marie Curie.

She said she was delighted when Boss Lady Jen came up with her "weird and wacky and wonderful" idea.

With the help of personal trainer Tony she is in the best shape possible to take on Amsterdam's canals.

"Marie Curie is a cause we've always supported," said model Jen, "and we really value Jane as a member of staff so wanted to help, both in a way that

was different and more fun than just giving a donation."

The only thing Jen hopes is that they make it through the night!

"We have no idea how it will go. Raising any money for the charity will be amazing. You might come in at 4am and find Jane clinging to the coffee machine to help her stand up and Tony passed out under a table but we will be here all the same!"

Celebs

Jane has been going all out as-a-sult on the Twitter front and has managed to rope some local celebrities in to making appearances, with Peanut Butter Girl, Tiffany Brien, coming in to make Peanut Butter Balls and Tim McGarry promising he'll do his best

to make it in. So it's all set to be a night of fun and frolics.

And those that couldn't make it sent their best wishes, with Colin Murphy, snowboarder Amy Fuller, Jake O'Kane and comedian Shane Todd all apologising that they were away but wishing her luck.

In one misguided effort she even got a reply from Paddy Barnes who told her "I'm sorry but I'm in Rio at the Olympic games lol". Although he might be free now!

And there was a message of support from Ireland rugby international Luke Marshall.

"Their Marathon Shift event is just like the cafe; unique, individual and fun and

I hope it raises lots of money for Marie Curie, such a great cause!" So if your thing is healthy pancakes at 3am a hearty stew at 5am or homemade potato bread and bacon at midnight? You know where to get 'em.

The doors open at 6.45am this Wednesday and stay open until 9.05am the next morning.



FAN: Tiffany Brien