

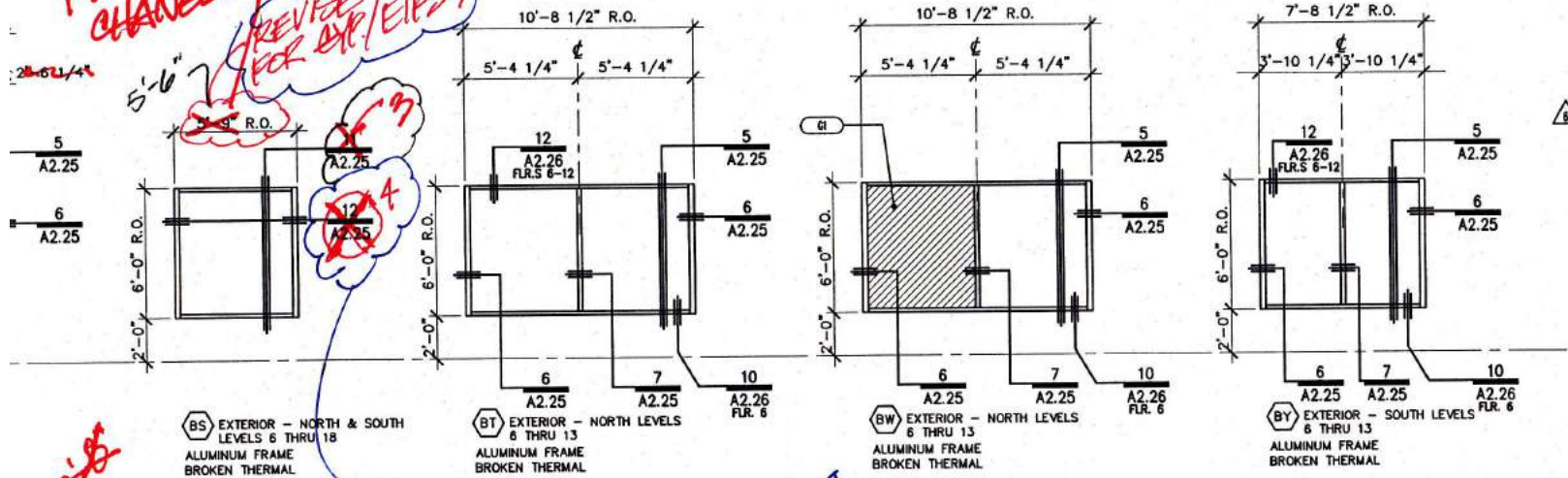
FP WAS CHANGED

NO PER CDC EMAIL 2-21-08

REVISE FOR EXP/EI/BS?

NO. 4

WAS NOT PICKED UP FOR 6



BS EXTERIOR - NORTH & SOUTH LEVELS 6 THRU 18 ALUMINUM FRAME BROKEN THERMAL

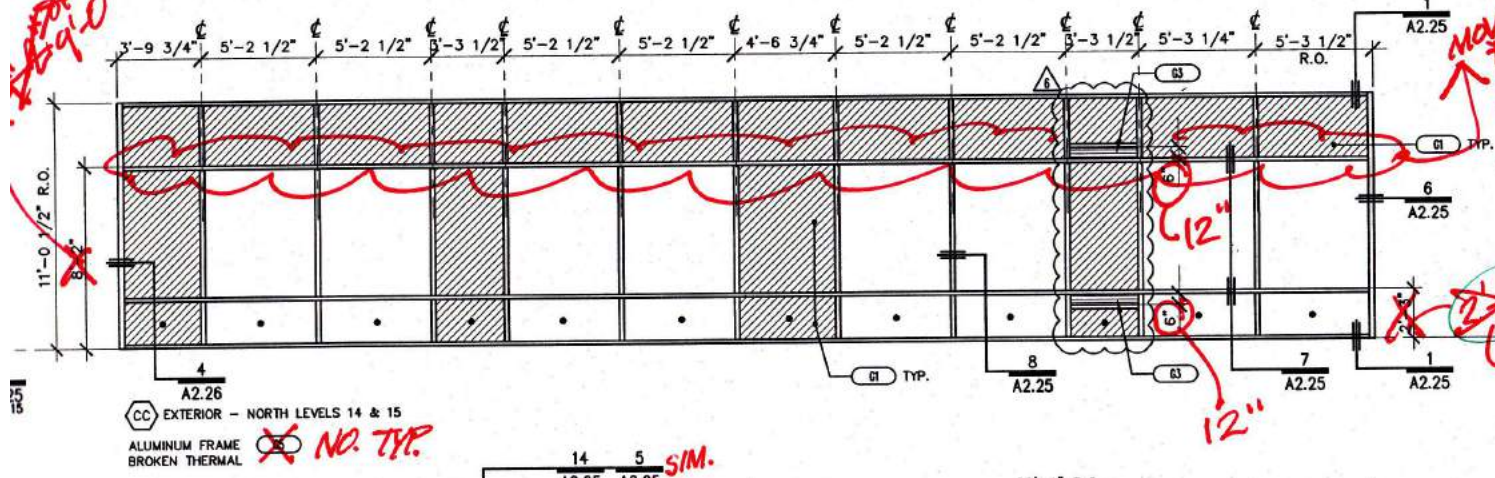
BT EXTERIOR - NORTH LEVELS 6 THRU 13 ALUMINUM FRAME BROKEN THERMAL

BW EXTERIOR - NORTH LEVELS 6 THRU 13 ALUMINUM FRAME BROKEN THERMAL

BY EXTERIOR - SOUTH LEVELS 6 THRU 13 ALUMINUM FRAME BROKEN THERMAL

WINDOW NOTES	
6	DESCRIPTION
G1	SPANDREL GLAZING W/ 2-1/2" METAL FURRING. SEE 13/A2.25. WHERE INTERIOR PARTITION ABUTS SPANDREL FURRING, SEE 2/A2.26.
G2	SPANDREL GLAZING, NOT FURRED (SYSTEM NOT EXPOSED TO TENANT LIVING SPACE).
G3	METAL LOUVER GLAZED INTO WINDOW FRAME. SEE DETAIL 15/A2.26.
G4	INTERMEDIATE VERTICAL MULLIONS FOR THIS SYSTEM TO HAVE 4" DEEP FINISH CAP EXTERIOR SIDE.
G5	WINDOW SYSTEM TURNS AT EACH VERTICAL MULLION. DIMENSIONS SHOWN ARE APPROXIMATE. WINDOW WALL CONSULTANT TO DETERMINE DIMENSIONS NECESSARY FOR FABRICATION. THIS ELEVATION IS DRAWN UNFOLDED.

NOT IMPLEMENTED

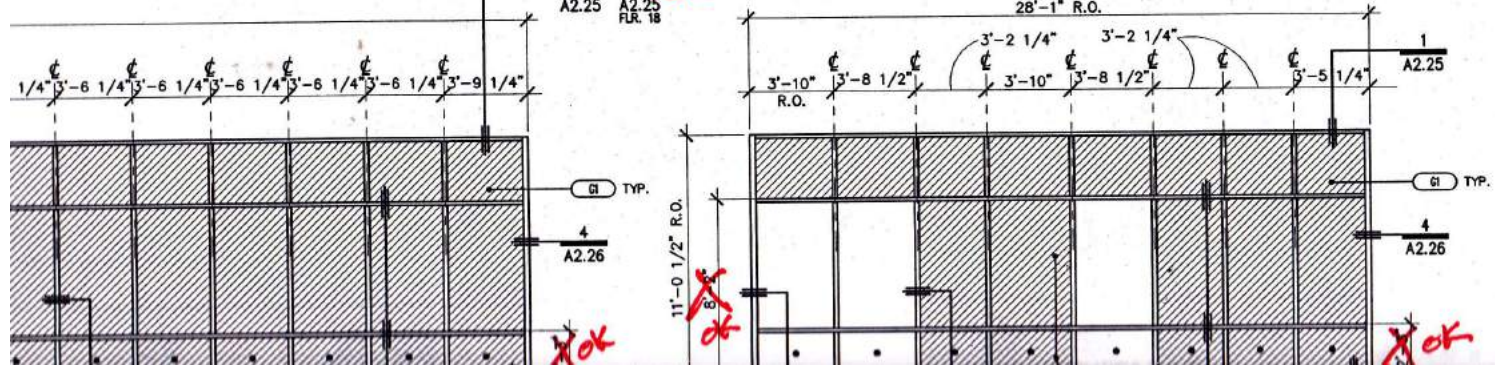


MOVE TO 9' AFF
REDLINE STOPS TYP. ALL W.W.'S

REVISED BACK TO 2'-9" AFTER LOUVER COORD. MTR.

FOR KEEP @ 2'-3"

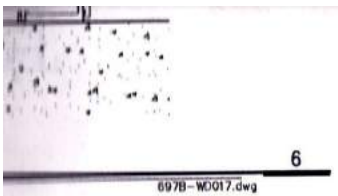
NO. TYP.



NO

NO

WYNDHAM

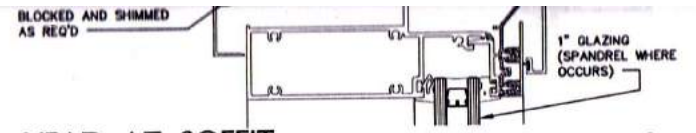


SLIDER JAMB

SCALE : 3" = 1'-0"

AS REQ'D
3/4" JOINT W/
CONTINUOUS BACKER
ROD AND SEALANT
2" EIFS OVER 5/8"
EXTERIOR SHEATHING
OVER METAL FRAMING

7

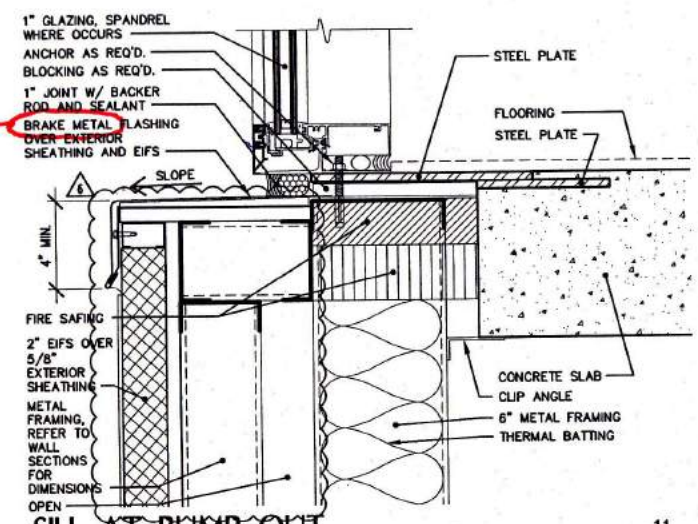


HEAD AT SOFFIT

SCALE : HALF SIZE

8

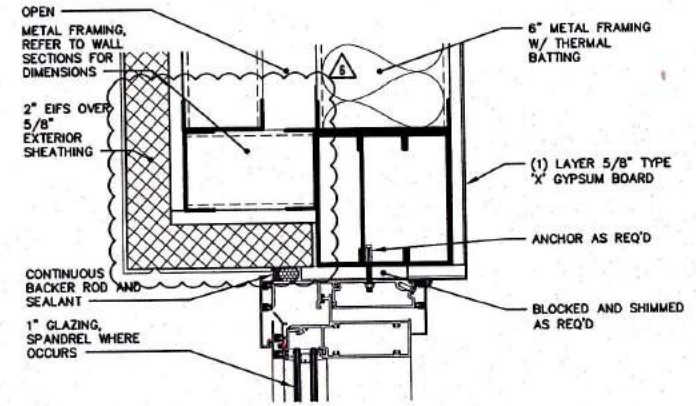
1" GLAZING, SPANDREL WHERE OCCURS
ANCHOR AS REQ'D
BLOCKED AND SHIMMED AS REQ'D
CONTINUOUS BACKER ROD AND SEALANT
(1) LAYER 5/8" TYPE 'X' GYPSUM BOARD
BLOCKING AS REQ'D



SILL AT BUMP OUT

SCALE : 3" = 1'-0"

11

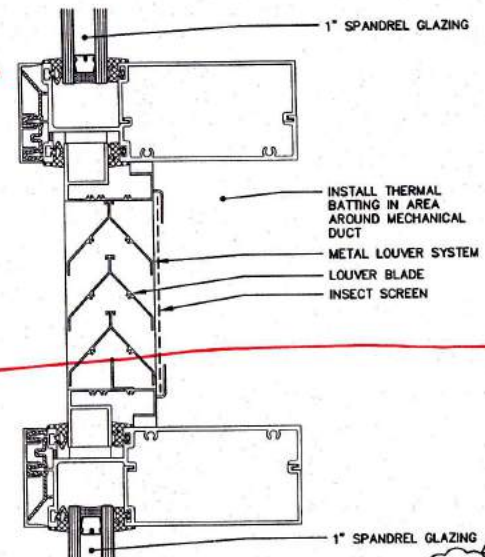


HEAD AT BUMP OUT

SCALE : 3" = 1'-0"

12

*BRAKE MTL.
IS RAPID CORROSION;
USE EXTRUDED ALUM.*

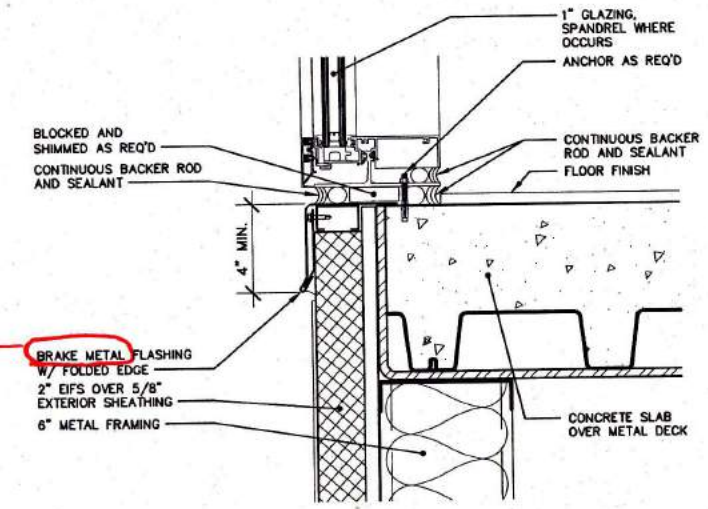


LOUVER

SCALE : HALF SIZE

697B-WD028.dwg

15



SILL

SCALE : 3" = 1'

697B-WD024.dwg

16