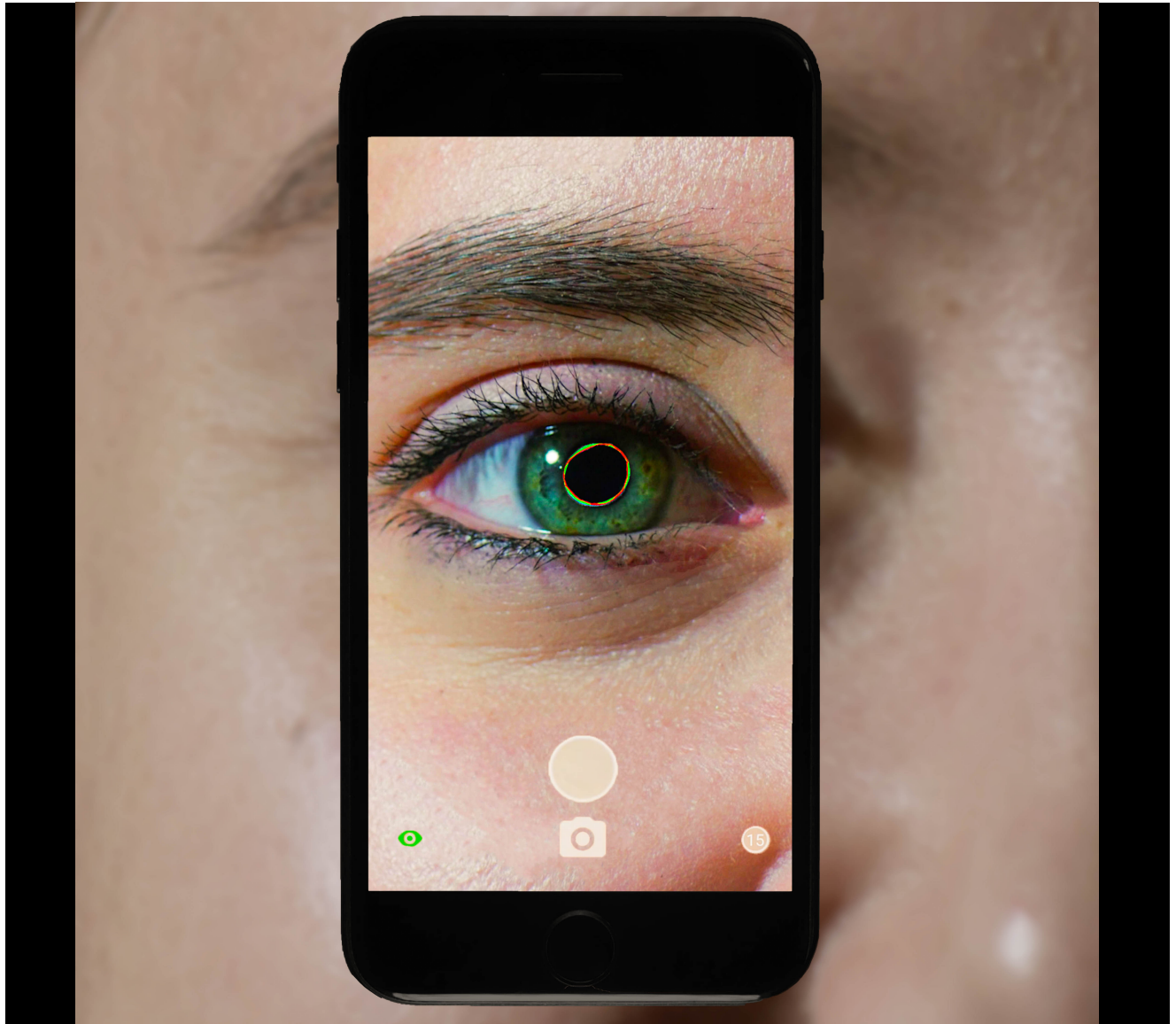


● brightlamp



When you know what to look for.

It's a vital sign.

Reflex by brightlamp is the world's first fully functional mobile pupillometer. And now, with launch of Reflex 2.0, the pupillary light reflex has potential to become both an optometric and neurological vital sign.

Take greater care.

Evaluate diagnoses, treatment effectiveness, and patient recovery with one noninvasive tool.

Results you can rely on.

Quantitative data that is unbiased, repeatable, and more accurate than competing products.

Instant and self-sufficient.

Process test results in seconds without any additional hardware or even a network connection.

Safer data management.

Easily view, export, and organize digital health data through Reflex's new in-app secure web portal.

It gets better.

brightlamp's machine learning algorithm is already working on an even greater tomorrow.

[Free Trial Download](#)

Is Reflex for me?

brightlamp's patented mobile technology platform unlocks the diagnostic power of the pupil for physicians (including optometrists, ophthalmologists, functional neurologists, and primary care) as well as nurses, athletic trainers and clinical researchers.

"All of these critical advancements were developed to help further streamline a medical professional's responsibilities and workflow."

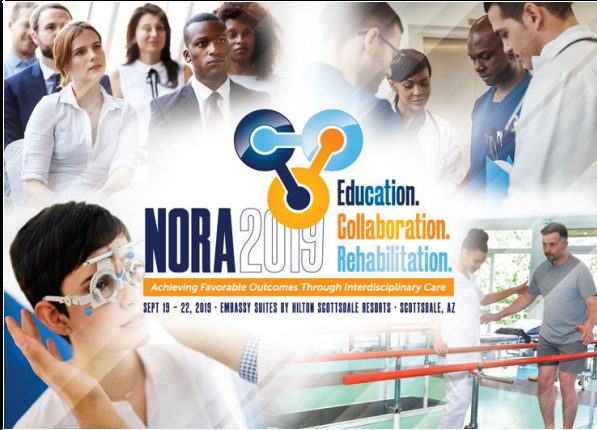
— Kurtis Sluss, brightlamp CEO and Founder

Your diagnostic workflow, simplified.

Reflex 2.0 allows you to capture, analyze, and manage confidential diagnostic data right on your iPhone®.



Learn more >



Next month: Going to NORA 2019? Follow brightlamp on social media and we'll meet you there!

Reflex 2.0

Follow us on social media

Investment



Brightlamp Inc., 200 S. Meridian St., #410, Indianapolis, IN 46225, United States, (317) 763-0786

[Unsubscribe](#) [Manage preferences](#)