

# REIMAGINE



HOME OF SIDNEY KIMMEL MEDICAL COLLEGE

JEFFERSON PHILANTHROPY REPORT

FISCAL YEAR 2015 | JULY 1, 2014 – JUNE 30, 2015

**REIMAGINE**

REINTERPRET  
RETHINK  
RENEW  
REFORM  
RECREATE  
REINSPIRE  
REINVIGORATE

REINVENT  
RECHARGE  
REPURPOSE  
REAFFIRM  
RESOLVE  
REARRANGE  
RECONNECT



Jefferson

HEALTH  
IS ALL  
WE DO

Jefferson

## INTRODUCTION

- 2** A Message from Stephen K. Klasko, MD, MBA
- 3** A Message from Richard W. Hevner and Bruce K. Entwisle
- 3** A Message from Elizabeth A. Dale, EdD
- 4** Jefferson Board of Trustees
- 5** Jefferson Fund
- 6** Alumni Relations
- 8** Special Events

*Each of the philanthropists listed in this report made a contribution of \$500 or more between July 1, 2014, and June 30, 2015. On behalf of everyone at Jefferson, we thank all donors, including those who wish to remain anonymous. We would also like to acknowledge the many corporations, foundations and other organizations that provided support for our healthcare delivery, education and research missions. Every gift is appreciated.*

*Additionally, all of the volunteers recognized in this report have devoted their time, energy and expertise toward our journey to "reimagine" Jefferson. Volunteers are the soul of a nonprofit institution.*

**THANK YOU.**

*Great care has been taken to ensure the accuracy of this report, but if you should find an error, please contact Lauren Coffey, Director of Stewardship & Donor Relations, at 215-955-1684 or lauren.coffey@jefferson.edu.*

## RESEARCH AND PATIENT CARE

- 14** The Marcus Foundation, Inc.
- 16** Farid I. Haurani, MD
- 17** Kimberly V. Strauss
- 18** Metastatic Uveal Melanoma Video Challenge

## SCHOLARSHIPS

- 22** The Carl G. and Evelyn Ay Sempier Nursing Scholarship
- 23** The Troetel Scholarship
- 24** The James D. and Mary Jo Danella Family Scholarship
- 26** The Alfred P. Spivack, MD Scholarship

## COMMUNITY FUNDRAISING INITIATIVES

- 30** The Women's Board of Thomas Jefferson University Hospitals
- 31** The Ladies of Port Richmond
- 32** Get Your Rear in Gear Philadelphia
- 33** The Sarah Parvin Foundation
- 34** The Mary Kline Classic
- 35** The Quintin Foundation

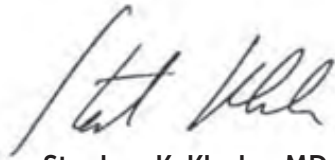
## GIFTS AND COMMITMENTS

- 38** Lifetime Giving
- 40** Individual Giving
- 58** Corporations and Foundations
- 63** 1824 Society (Planned Gifts)

## BOARD MEMBERS AND VOLUNTEERS

- 66** Advisory and Alumni Boards
- 70** Jefferson Volunteers
- 72** Fiscal Year 2015 Fundraising Summary

# REIMAGINING



**Stephen K. Klasko, MD, MBA**

*President and CEO*

*Thomas Jefferson University  
and Jefferson Health*



***Every year at commencement, I like to quote people who have inspired me, even though many are not known as leaders in healthcare.***

For example, I remind our students of Michael Dell's thought: "As you start your journey, the first thing you should do is throw away that store-bought map and begin to draw your own." I'm deeply honored that you have chosen to join us in drawing that map for Jefferson—the university, the hospital and Jefferson Health. With you, we are mapping an optimistic and exciting future for healthcare. In fact, this 192-year-old institution is acting like a start-up—finding new ways to lead the changes we all see in clinical care, in research and in education.

Our \$2 trillion segment of the economy is undergoing enormous change, and we are energized by it. We're seizing this change as a challenge and an opportunity to look at each facet of our mission in new ways. At Jefferson, we're not just running to keep up with change; we're leading the transformation. We're out in front, considering what will be obvious to everyone 10 years from now—and doing it now. Our vision statement says, "We will reimagine health, health education and discovery to create unparalleled value and be the most trusted healthcare partner."

As a health sciences university, Jefferson is one of the nation's leaders in bringing together health-science disciplines and training professionals in teams that provide not only great care

but, with a new emphasis on listening and communication, also great caring. As an academic medical center, we drive new ideas through research and translate them into products, strategies and ventures that help patients and consumers. The Jefferson Accelerator Zone provides space and programming where our students and scientists team up with investors, big pharma and other partners to create and launch ventures in bio tech, medical technology and health IT. Partnering with other health systems enables Jefferson—and our partners—to secure a healthier future for our institutions and, more importantly, for the communities we serve. That's why Jefferson merged with Abington Health. It's the best of both worlds: frontline university expertise with hometown care. We're also delivering the right level of Jefferson care anytime and anywhere to anyone who needs it through JeffConnect, our pioneering telehealth initiative.

Reimagining healthcare requires innovation, collaboration and philanthropy. Everything we do—everything we imagine—our alumni and friends make possible. It's an exciting time to be a part of healthcare, and I'm glad that you, through philanthropy, are partners with us. Thanks to your generosity, the best is yet to come.



## RETHINKING

***“If you don’t know where you want to go, any road will get you there.”***

—LEWIS CARROLL, ALICE’S ADVENTURES IN WONDERLAND

Healthcare today may seem like the confusion and illogic of Wonderland. But at Jefferson and Abington, we know exactly where we’re headed. And we are excited!

We’re not just tinkering with the present or updating the past: we’re reimagining. We’re re-inventing Jefferson Health as a whole new healthcare system where patients can receive the very best medical care right in the community they call home. We’re thinking forward and training healthcare professionals today to meet the demands of tomorrow, and we’re fostering a spirit of entrepreneurship that puts discoveries and breakthroughs where they can do the most good.

We’re letting go of the old assumptions and moving away from maddening Wonderland logic—freeing up creativity and innovation, pushing boundaries, breaking paradigms and re-inventing something completely fresh as well as functional. We have a vision, we have the ability, and we have the will to make it happen. We’re optimistic about a brighter future because your generosity is helping us get there. Thank you for your support and for joining us on the journey. We won’t get to where we’re going without you.

**Richard W. Hevner**  
*Chair*  
*Board of Trustees*



**Bruce K. Entwisle**  
*Chair*  
*Institutional*  
*Advancement*  
*Committee*



## RECREATING

***Healthcare requires a lot of imagination. The word comes from the Old French imaginier—to sculpt, carve or paint.***

It’s creating something new, like a work of art, or recreating something timeworn that needs to be transformed and made new again.

Reimagining sets us apart. It captures the spirit of Jefferson: innovative, entrepreneurial, resourceful, bold. It highlights our passion for transforming Jefferson and the future of healthcare by seeing before anyone else new solutions to new problems in a changing world. It inspires groundbreaking ideas and impactful programs that ultimately recreate tomorrow’s healthcare and change peoples’ lives for the better.

John Lennon, in Imagine, sings, “You may say I’m a dreamer, but I’m not the only one.” Our benefactors, alumni and friends “join us” in re-creating what we need to build a healthier future. You are the reason fiscal year 2015 was a great year, with fundraising 41 percent higher than the average of the last decade, and more alumni events and a bigger, better Jefferson Gala than ever before.

If we are doers at Jefferson, in addition to being dreamers, it’s because of your generosity. Philanthropy empowers us to reimagine how we heal, how we teach and how we discover. It puts the flesh and bones of reality on a future that existed first as an idea. That’s the greatest gift you have given to Jefferson. Thank you for joining us to reimagine—and recreate—a better future for us all.

**Elizabeth A. Dale, EdD**  
*Executive Vice President*  
*Chief Development*  
*Officer*  
*Office of Institutional*  
*Advancement*

## JEFFERSON BOARD OF TRUSTEES

The world of healthcare is complex and ever-changing. As Jefferson moves to reimagine healthcare across the nation and beyond, we rely on guidance from our dedicated trustees to help us plan for the future in a rapidly evolving environment while making sure we meet the needs of current patients and students every single day. Jefferson's Board of Trustees is a group of carefully chosen community and professional leaders whom we entrust with the responsibility of preserving our mission and vision both today and in the years to come.

### Thomas Jefferson University Board of Trustees

Richard W. Hevner, *Chair*  
Stephen P. Crane, *Vice Chair*  
Robert S. Adelson  
David Archibald, EdD  
David R. Binswanger  
Ira Brind  
Bruce K. Entwisle  
Richard C. Gozon  
H. Richard Haverstick, Jr.  
William A. Landman  
Marvin Mashner  
Britton H. Murdoch  
John S. Oyler, Esq.  
Duncan B. Pitcairn  
Vivian Pinn  
Caro U. Rock  
Richard H. Rothman, MD, PhD  
Philip J. Sasso, MD  
Michael Snead  
Meryle Twersky, Esq.  
Robert P. Vogel, Esq.  
John Walp  
Patricia Wellenbach  
R. Richard Williams  
Stephen K. Klasko, MD, MBA, *ex officio*

### Emeritus Trustees

Lennox K. Black,  
Edward C. Driscoll  
Dorrance H. Hamilton  
James E. Ksansnak  
Brian G. Harrison  
Peter M. Mattoon, Esq.  
Douglas J. MacMaster, Jr., Esq.  
Thomas B. Morris, Jr., Esq.

### Thomas Jefferson University Hospitals, Inc. Board of Trustees

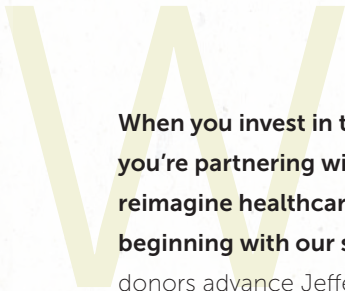
Janice Bellace, *Chair*  
Ron Naples, *Vice Chair*  
Mark L. Alderman, Esq.  
Sal D. Cognetti, Jr., Esq.  
Thomas P. Costello  
George E. (Ged) Deming  
Anthony J. DiMarino, MD  
Jack Farber  
Kenneth A. Graham  
Michael J. Heller, Esq.  
Harold A. Honickman  
Hyman R. Kahn, MD  
Christopher J. Kneizys  
Charles G. Kopp, Esq.  
Leonard I. Korman  
Ira Lubert  
Josephine C. Mandeville  
Paula R. Mandle  
Dan W. Matthias  
Joseph J. McLaughlin  
David O'Malley  
Jeffrey P. Orleans  
Vijay M. Rao, MD  
Richard T. Riley  
Gerard (Jerry) Sweeney  
Brian P. Tierney, Esq.  
Alex Vaccaro, MD, PhD  
Cuyler H. Walker, Esq.  
Charles J. Yeo, MD

### Ex Officio

Anne Docimo, MD, MBA  
Matt Killion, MD  
Laurence Merlis  
Mark L. Tykocinski, MD  
Vanessa Weisman



# THE JEFFERSON FUND ANNUAL UNRESTRICTED GIFTS



**When you invest in the Jefferson Fund, you're partnering with Jefferson to reimagine healthcare from start to finish, beginning with our students.** Each year, loyal donors advance Jefferson's mission through their annual unrestricted gifts.

This critical pool of dollars reaches inside the classroom, allowing the university to enhance technologies, improve simulation labs and update general educational facilities. Ultimately, this translates into a cutting-edge student experience that sets Jefferson apart from its competitors. Whether you're supporting the Sidney Kimmel Medical College; the College of Biomedical Sciences; the College of Health Professions; the College of Nursing; the College of Pharmacy; or the College of Population Health, your investment is shaping our future healthcare leaders and providers—the physicians, nurses, therapists and more who will play an instrumental role in healing others for many years to come.

The Jefferson Fund also provides strategically focused support across the whole institution, remaining flexible enough to allow enterprise leaders to prioritize each investment. Unrestricted resources from the Fund have served as the foundation for the creation of JeffMD, an innovative new medical curriculum

that will change the face of the traditional medical education so that it is more patient centered and fully integrated with fundamental science, clinical exposure, professional development, the humanities and more.

The Jefferson Fund's reach doesn't end with education; annual unrestricted gifts also impact the hospital. Investments from patients and their loved ones enable hospital leaders to invest in patient-care enhancements. Funds provide the means to purchase state-of-the-art clinical equipment like new crash carts and "smart" adjustable beds. The Jefferson Fund augments federal funding and, in some cases, is the sole support for pioneering research that will one day cure our most challenging diseases.

In 2014–2015, a portion of Jefferson Fund contributions were used to establish the Dean's Transformational Science Award, which nurtures high-impact science and research-intensive faculty collaborations so that Jefferson can remain on the forefront of revolutionary science initiatives—initiatives that will ultimately save lives.

With the help of Jefferson Fund supporters, we are reimaging healthcare one student, one clinician, one researcher, one entrepreneur and one patient at a time.



## ALUMNI RELATIONS



**We want our alumni to stay connected to Jefferson, and to each other, wherever their lives may take them.** Whatever our alumni are seeking—be it introductions to fellow graduates in their hometown, opportunities to mentor current students or an excuse to come back to campus for a visit—the Office of Alumni Relations has them covered.

Our Alumni Relations team seeks to reach, serve and engage all Jefferson alumni; to foster a lifelong intellectual and emotional connection between Jefferson and its graduates; and to provide the institution with goodwill and support. They do this through a variety of initiatives such as social, cultural and networking events; professional and educa-

tional workshops, panels and seminars; alumni publications like the *Bulletin* and the *Review*; and numerous online tools and resources.

Fiscal year 2015 was a busy year for our Alumni Relations staff, who organized 43 alumni events—more than double the previous year—in 13 states. They expanded programming to include more events for alumni university-wide and developed new events featuring alumni and faculty speakers. They connected with 244 alumni volunteers, supported various healthcare specialty receptions and planted the seeds for several brand-new initiatives, including the Jefferson Alumni Travel Program and the Jefferson Alumni Network App\*, which offers exclusive access to a password-protected alumni directory searchable by name, class year, college, specialty, industry and company, plus a map that shows fellow alumni who live near your current location.

We look forward to continuing to grow Jefferson's Alumni Relations programming and hope all of our graduates will join us for the ride.

“I take great pride in being a Jefferson alumnus, and so should everyone else. Continued alumni involvement helps to maintain that sense of pride.”

-PHIL OVADIA, MD '98

*\*The Jefferson Alumni Network App is free and available for iPhone and Android. For information on downloading the app, visit [Jefferson.edu/alumni](http://Jefferson.edu/alumni).*



I have such fond memories of my time on campus. I still stay in touch with many of my friends from Jefferson—we formed lifelong bonds.”

—NICK SLENKER, MD '07

PLEASE STAY IN TOUCH!

**Phone** 215-955-7750

**Email** [alumni@jefferson.edu](mailto:alumni@jefferson.edu)

**Website** [Jefferson.edu/alumni](http://Jefferson.edu/alumni)

**LinkedIn** [Jefferson University](https://www.linkedin.com/company/jefferson-university)

Office of Alumni Relations

**Twitter** [@jeffersonalumni](https://twitter.com/jeffersonalumni)



## SPECIAL EVENTS

In fiscal year 2015, Jefferson's Office of Protocol and Special Events produced more than 100 events—nearly two and a half times as many as the prior year. These included leadership and trustee gatherings hosted by Jefferson President and CEO Stephen Klasko, MD, MBA; donor recognition events such as the Jefferson Scholarship Dinner and President's Club Reception; fundraising events like the Sidney Kimmel Cancer Center Tribute Dinner and the 12th Annual Jefferson Gala; and many more. The majority of these events drew record-high attendance, and several were revivals of celebrations that had gone dormant in recent years. Thank you to everyone who helped make all of the year's events a resounding success.



Sidney and  
Caroline Kimmel.



### **12th Annual Jefferson Gala**

6ABC news anchor Jim Gardner served as master of ceremonies and legendary singer-songwriter Paul Anka was a special guest at the 12th Annual Jefferson Gala on November 14 at the Philadelphia Marriott Downtown. The event honored Sidney Kimmel for his landmark \$110 million gift to Jefferson and drew a record 950 attendees who helped raise a record-setting \$1.2 million to support research, education and patient care.

Jim Gardner.



### 9th Annual Pancreatic Cancer and Related Diseases Symposium

Patients and their loved ones received an update on research and treatments for pancreatic cancer and related diseases at this symposium on November 8. The multi-disciplinary team of clinicians and scientists at Jefferson's Pancreas, Biliary and Related Cancer Center discussed the latest in medical therapies, surgical options and lifestyle changes for people affected by these conditions. As it does every year, the 2014 event included a survivor group photo.



Leonard Gomella, MD, gives Garth Weldon, Managing Partner of The Prime Rib, the Spirit of Commitment and Generosity Award at the 6th Annual Sidney Kimmel Cancer Center Men's Event.

### 6th Annual Sidney Kimmel Cancer Center Men's Event

On April 22, the Sidney Kimmel Cancer Center at Thomas Jefferson University held its 6th Annual Men's Event benefiting prostate cancer research and patient care. KYW Newsradio medical editor Brian McDonough emceed, and standup comedian Billy Gardell of the TV series Mike & Molly entertained more than 350 attendees at the Union League of Philadelphia. Sidney Kimmel Cancer Center Director Karen Knudsen, PhD, and Department of Urology Chairman Leonard Gomella, MD, served as honorary co-chairs for the event, which raised more than \$250,000.



### Sidney Kimmel Cancer Center Tribute Dinner

Held on September 5 at Lincoln Financial Field, the 2014 Sidney Kimmel Cancer Center Tribute Dinner honored the Philadelphia Eagles for their dedication to supporting and raising awareness for cancer research and patient care. The event had 375 attendees, raised more than \$370,000 and involved plenty of dancing, food and fun. Proceeds benefited the Breakthrough Cancer Research Fund, which provides resources for researchers as they apply scientific discoveries to new treatments for cancer.

### **Annual Scholarship Dinner**

The Jefferson Scholarship Dinner took place on campus March 11. This annual event brings together scholarship donors and recipients, enabling benefactors to meet the students whose lives they are changing and giving grateful students the chance to say "thanks." A record 163 guests joined in this year's dinner.



### **Jeffersonian Dialogue with Jack and Suzy Welch**

Business titans and best-selling authors Jack and Suzy Welch visited Jefferson on April 17 to share insights from their bestselling book *The Real-Life MBA: Your No-BS Guide to Winning the Game, Building a Team, and Growing Your Career*. More than 500 attendees participated in two sessions during which the Welches spoke on strategic leadership and effective teamwork as they see it today and how administrators, faculty, staff and students can apply their lessons at Jefferson.





### **David Binswanger Portrait Presentation**

Jefferson honored longtime friend and trustee David R. Binswanger with a portrait unveiling on June 1. David has served Jefferson with devotion and distinction since 2001; from 2009-2014 he was Chairman of the Board of Thomas Jefferson University. Nelson Shanks, a world-renowned painter, art historian, art teacher, connoisseur and collector, painted David's portrait, which included his wife, Dorothy, wearing her wedding gown. This was the final work of art Shanks painted; he passed away in August 2015.

Richard Hevner, Chair of the Board of Trustees; Emily Sherrard, MD, Sidney Kimmel Medical College Class of 2015; Elizabeth Dale, Executive Vice President and Chief Development Officer; and Charles J. Yeo, MD, the Samuel Gross Professor and Chair of Jefferson's Department of Surgery.



### **President's Club Reception**

Jefferson closed fiscal year 2015 on a high note with a reimagined President's Club Reception in the Dorrance H. Hamilton Building's Conrady Lobby on June 23. The President's Club recognizes donors who have given \$2,500 or more during the fiscal year. This group provides the backbone of philanthropic support for Jefferson, and this reception is a way for us to express our gratitude for their generosity. Dr. Klasko welcomed more than 150 guests to this lively end-of-year celebration.





## RESEARCH AND PATIENT CARE

Jefferson is only able to provide the highest level of patient care and conduct leading-edge biomedical research with support from individuals, families and institutions throughout the Philadelphia region and far beyond. Here are a few recent contributions that are bolstering our efforts to reimagine the future of healthcare in the clinic and in the laboratory.

# RENEW

# THE MARCUS FOUNDATION, INC.



**As co-founder of The Home Depot, Inc., Bernie Marcus is often recognized for helping people reimagine their home-improvement projects.**

But through their leadership of the Marcus Foundation, Inc., he and his wife, Billi, have also helped countless people by supporting a vast array of medical, educational, religious and other community causes.

In January 2014, Mr. and Mrs. Marcus committed to helping Jefferson reimagine healthcare by providing a \$14 million grant to establish Marcus Integrative Health at the Myrna Brind Center–Villanova, the first satellite location of the Myrna Brind Center of Integrative Medicine at Jefferson.

“Jefferson is at the forefront of innovating integrative medicine—a transformation I want to be part of,” Mr. Marcus says.

The 14,000-square-foot facility in Villanova, Pa., accommodates a growing number of clinical experts, laboratories with advanced

diagnostic capabilities, a state-of-the-art nutrient infusion center and various wellness programs and products. Services include holistic primary care, executive health, nutrient infusion programs, novel testing procedures, acupuncture and other complementary therapies previously unavailable to many patients.

The Marcus grant will help Jefferson revolutionize the patient experience by enabling the purchase of a PET-MR (Positron Emission Tomography-Magnetic Resonance) machine, which combines an MRI with molecular



RESEARCH &  
PATIENT CARE

imaging to give radiation-free images that precisely align a patient's anatomy and metabolic activity. Patients who need both tests will have the convenience of one exam instead of two, and clinicians can use this technology to assess a range of diseases, guide innovative treatment protocols and enhance research. PET-MR is specifically recognized for its insight into neurological disorders and can test the effects of integrative therapies on brain function.

"PET-MR imaging at the new site will be a major differentiator for Jefferson and a

significant value for the patients we serve. We will be the first in the region to have this capability," says Daniel Monti, MD, the Ellen and Ron Caplan Director of the Myrna Brind Center of Integrative Medicine.

The Marcus Foundation's investment in Marcus Integrative Health at the Myrna Brind Center-Villanova is a critical starting point for Jefferson to expand its integrative health programs to additional locations outside of Philadelphia and make innovative health programs and therapies accessible to communities that have never had such resources before.

*Jefferson is at the forefront of innovating integrative medicine—a transformation I want to be part of.”* —BERNIE MARCUS

## RESEARCH & PATIENT CARE



## FARID I. HAURANI, MD

**During a September 2014 visit to Jefferson's campus to celebrate the 75th anniversary of the Cardeza Foundation for Hematologic Research, Farid I. Haurani, MD, recalled highlights from his 30 years as a Cardeza faculty member.**

"What I remember most is the close relationships between MDs and PhDs," he said. "The Foundation built an early bridge between clinicians and scientists, setting the model for today's multidisciplinary teamwork."

To honor his mentor, Leandro M. Tocantins, MD, Haurani established the Leandro M. Tocantins, MD-Farid I. Haurani, MD Directorship in the Cardeza Foundation, which will support hematologic research in perpetuity. Paul F. Bray, MD, is the first holder of this esteemed directorship.

Haurani joined Jefferson's faculty in 1958 and worked alongside Tocantins to advance treatments for blood disorders. Together, they accomplished remarkable "firsts" such as demonstrating the feasibility of human bone marrow transplantation.

Haurani died at age 86 on Nov. 11, 2014, but his spirit lives on through the directorship he created as well as his groundbreaking achievements; the researchers his work continues to inspire; and the countless patients their discoveries will benefit in the years ahead.

Paul Bray, MD, with Farid Haurani, MD.

# KIMBERLY V. STRAUSS

**Standout athlete. Hollywood actor. Ambitious businessman.  
Passionate philanthropist. And, above all, devoted husband and father.**

From his days as an All-Philadelphia, All-Southern Conference basketball player to his starring role in a production of Hamlet to his work as an executive for Pep Boys Auto Stores, which his father co-founded in 1921, Robert P. Strauss led an exciting, successful and varied life. He and his wife, Eugenia—a dancer and actress—raised three children and taught them the importance of philanthropy.

The Strausses' daughter Kimberly has always embraced those lessons. A trustee of the Strauss Foundation—created by her grandfather in 1951 to benefit educational, scientific and medical causes—she has contributed to many institutions, including Jefferson. A deep interest in neuroscience recently inspired her to make a significant gift to the Vickie and Jack Farber Institute for Neuroscience, where Jefferson neurologists and neurosurgeons are reimagining the future of care for disorders such as epilepsy, multiple sclerosis, Alzheimer's disease, Parkinson's disease, brain tumors and aneurysms.

In gratitude for Ms. Strauss' generosity, Jefferson has named the lobby of one of its newest buildings, the Health Professions Academic Building at 901 Walnut Street, after her father, who died in March 2014.



"He was strong, resolute and steadfast, and also very sweet. He let his business acumen speak for itself, and despite his accomplishments, my father was never too proud, nor pretentious. Instead, he was always genuine and sincere," Ms. Strauss remembers.

The bright, modern Robert Perry Strauss Lobby will forever remind our community of his great legacy while Ms. Strauss' commitment to advancing neuroscience research will help change our understanding of the brain—and the conditions that affect it.

Robert Rosenwasser, MD, the Jewell L. Osterholm Professor and Chair of the Department of Neurological Surgery, with Kimberly Strauss and portrait artist Frank Morris.

METASTATIC  
UVEAL  
MELANOMA  
VIDEO  
CHALLENGE

**The word melanoma is unlikely to make people think of their eyes.**

Yet uveal melanoma is one of the most dangerous eye cancers in adults because it fails to respond to conventional chemotherapy, and the disease returns and metastasizes in half of all cases in which the primary tumor was successfully treated.

Takami Sato, MD, PhD, the K. Hasumi Professor of Medical Oncology at the Sidney Kimmel Cancer Center at Jefferson, has dedicated his career to finding new ways to treat metastatic uveal melanoma. In collaboration with physicians from Wills Eye Hospital; Jefferson's Interventional Radiology Division, led by David Eschelmann, MD '86, and Carin Gonsalves, MD; Renee Zalinski, Senior Care Coordinator; and the uveal melanoma team, Dr. Sato has translated research into clinical therapies that extend lives. He has also partnered with Andrew Aplin, PhD, Deputy Director of Basic Science at the Sidney Kimmel Cancer Center, to investigate new avenues for treatment.

To promote awareness of metastatic uveal melanoma and support research in the Uveal Melanoma Program, last year Jefferson produced a video that featured two patients and donors, Terry Willoughby and Ted Popp, Jr. The video presented a challenge to viewers: if they collectively contributed \$200,000 between October 15 and December 31, 2014, an anonymous donor would match the total.

Audiences rose beyond the challenge, and the resulting \$500,000 is providing a year's worth of funding for two major research projects. Nearly 90 percent of gifts that came in during the challenge were from



In its listing of top hospitals for 2015–16, *U.S. News & World Report* ranked Jefferson fourth in Pennsylvania and second in the Philadelphia metro area, with seven specialty areas ranked among the nation's best. Everyone in the Jefferson community can take great pride in achieving such a high level of excellence.



first-time Jefferson donors—and the video continues to draw funds even though the challenge has ended.

One of the video challenge donors, Bjornar Hermansen, went even further by contributing a significant additional gift specifically to fund Dr. Sato's efforts to boost the immune system's ability to fight metastatic uveal melanoma. Dr. Sato is exploring the ability of a type of immune cell known for its tumor-killing powers—called natural killer (NK) cells—to destroy liver metastases (the most common kind of uveal melanoma metastases). By infusing NK cells into the hepatic artery after they've been modified to express a "search light" to detect and kill melanoma cells, Dr. Sato believes he may be able to treat tumors more successfully—and Bjornar's generous investment is helping to further this groundbreaking research.

You can see the metastatic uveal melanoma educational video at [Advancement.Jefferson.edu/Sato](http://Advancement.Jefferson.edu/Sato). Sadly, featured patient and philanthropist Ted Popp lost his cancer battle in May 2015, and Bjornar Hermansen lost his in December 2015; their passings illustrate the need for research involving this devastating disease.





# REINSPIRE

## SCHOLARSHIPS

Increasing scholarship opportunities for our students is one of Jefferson's top objectives. Students from all of our programs view scholarships as much more than vehicles for purchasing computers and books and paying tuition. Scholarship awards show recipients that their hard work matters and act as a catalyst that motivates them to pursue their loftiest goals. Here are some scholarship gifts made during fiscal year 2015.

# CARL G. AND EVELYN AY SEMPIER NURSING SCHOLARSHIP

**A native Philadelphian who completed a degree in economics and politics, then realized her true calling was to become a nurse practitioner.**

A volunteer firefighter and personal trainer aiming to transition into emergency care.

An aspiring nurse educator who founded Jefferson Students for Interprofessional Education Grand Rounds, an innovative student-run initiative designed to increase the clinical relevance of interprofessional education for all health professions students.

Three very different Jefferson College of Nursing students who have one important thing in common: they all received support through the Carl G. and Evelyn Ay Sempier Nursing Scholarship during the 2014–15 academic year.

Alumna Carlyn Sempier Darby, BSN '80, established the scholarship in honor of her parents to assist nursing students pursuing a bachelor's degree. "The Jefferson nurse is expertly equipped to meet the challenges of the rapidly changing healthcare system. There isn't a more comprehensive or rigorous program around, and I find great joy



in making a Jefferson education possible for students," says Carlyn, who is now retired and remains intent on staying connected with the Jefferson community by helping students achieve their academic goals.

"I cannot adequately express how much it

means to have received financial assistance at a time when I needed it most," says Sempier Scholarship beneficiary Chelsea Gorman.

"Mrs. Darby is truly making it possible for me to pursue my passions, and I am so very grateful."

Carlyn Darby (second from left) with students Michele Freed-Madrack and Shelah McMillan as well as Jefferson College of Nursing Dean Beth Ann Swan, PhD.

## THE TROETEL SCHOLARSHIP

**William M. Troetel, PhD '72, attributes his professional success to his Jefferson education—and gratitude for his academic experience has inspired him to give back.**

"I am where I am today because of Jefferson," says Bill, who has more than four decades of drug regulatory experience and works as a consultant for pharmaceutical and biotechnology companies as they move new drugs through clinical development and to market. "When I tell people I went to Jefferson, it makes an impression."

A U.S. Public Health Service veteran, Bill attended the university on the GI Bill, which provides educational assistance to military service-members. He recognizes that without that backing, he might not have been able to complete his education. To help current

students achieve their own dreams, this year he and his wife, Barbara, made a gift to establish the Troetel Scholarship Fund in the Jefferson College of Biomedical Sciences.

Bill visited Jefferson's campus in September to speak with members of the Jefferson Business and Biotechnology Group, better known as BizBio, a student-run organization that promotes interest in careers involving both business and scientific training. By sharing details about his professional field, he introduced students to a path they might never have considered before.

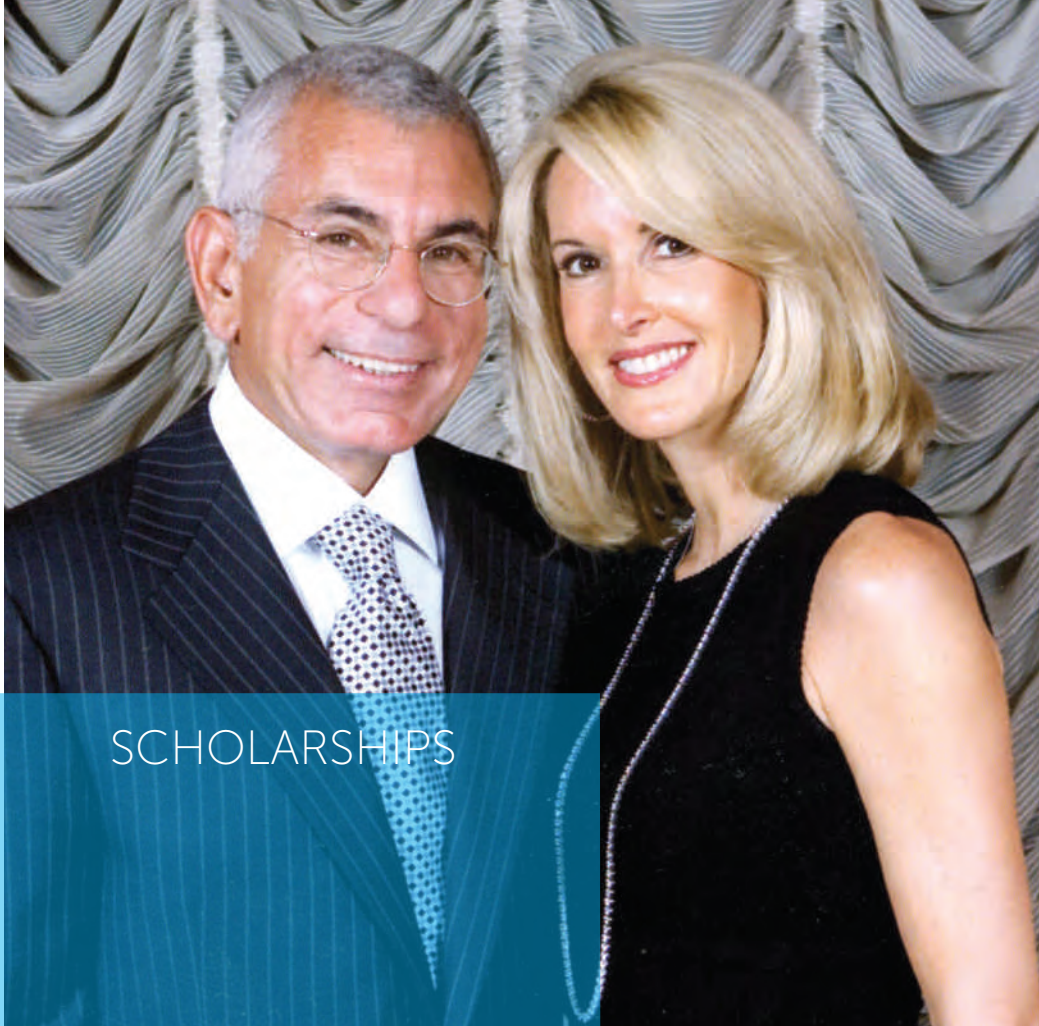
"There are possibilities for PhD students that go far beyond being a bench scientist. I've had a wonderful career and enjoy explaining what I do so students can learn about a new option they might not even have been aware of," he says, noting that through both his scholarship support and his time speaking with students on campus, "I want to create opportunities for young people who otherwise might not have those opportunities."



Bill Troetel, PhD, with students from the Jefferson College of Biomedical Sciences.

*"I sometimes experience a wave of panic when I review my student loan statements. Learning that a scholarship award eliminated a substantial portion of one of those loans was a great relief and reminded me that all of my hard work has been worthwhile. I could not be more grateful."*

—THERESA MORAN  
JEFFERSON COLLEGE OF NURSING STUDENT



## SCHOLARSHIPS

# JAMES D. AND MARY JO DANELLA FAMILY SCHOLARSHIP

**The decision to attend medical school is a big one that means committing to long hours, challenging courses and sleepless nights.**

The number one reason students hesitate to pursue an MD, however, has nothing to do with workload. It has to do with cost.

Private U.S. medical-school students from the Class of 2014 graduated an average of \$200,000 in debt,

according to the Association of American Medical Colleges. For many young physicians, paying off their staggering loans takes 15 to 30 years.

As Jefferson reimagines health sciences education with an emphasis on creativity, innovation and the humanities, the university is also prioritizing increased scholarship support for all students. James and Mary Jo Danella are important partners in our ability to meet this goal at Sidney Kimmel Medical College.

The couple, who are friends with and patients of several Jefferson physicians, recently created the

James D. and Mary Jo Danella Family Scholarship Fund to support SKMC students—particularly those who show leadership potential through community service with groups like JeffHOPE or participation in the Innovation and Design Application Program, which draws students with “non-traditional pre-med” backgrounds such as architecture, engineering and computer science to foster an “out-of-the-box” approach to healthcare.

Mr. and Mrs. Danella recognize that students with undergraduate degrees in areas other than science face

## KIMMEL MATCHING PROGRAM **DOUBLES DONORS' IMPACT**

In addition to James and Mary Jo Danella, during fiscal year 2015 several Jefferson friends and alumni made scholarship pledges eligible for the Sidney Kimmel Endowed Scholarship Matching Program:

William J. Antognoli, MD '61 (The William J. Antognoli, MD '61 Scholarship Fund)

Amy Liss (The Liss Scholarship Fund)

Louis Vignati, MD '70 (The Regina K. Branigan Scholarship Fund)

John J. Park, MD '94 (The John J. Park, MD '94 Scholarship Fund)

Alfred P. Spivack, MD '54 (The Alfred P. Spivack, MD Scholarship Fund)

Antoine and Nadia Moukarzel, Lea A. Moukarzel, MD '14, and Jeffrey F. McMahon, MD '14  
(The Moukarzel Art in Medicine Scholarship Fund)

To honor Karen Moss Glaser, PhD, a 30-year faculty member and Sidney Kimmel Medical College's senior associate dean for academic affairs who died suddenly in November 2014, multiple colleagues and loved ones created the Karen Moss Glaser Memorial Scholarship Fund, which will also be matched.

The generous contributions of these fiscal year 2015 scholarship donors has

**RESULTED IN AN EXTRA \$1,325,000**

in available scholarship funding for Sidney Kimmel Medical College students.

Without scholarships, many of our students would not be able to study in the health professions. The simple fact is that financial assistance is crucial to making education attainable. A scholarship gift is an investment in a student's future and an investment in Jefferson as a whole.”

—SUSAN MCFADDEN,  
DIRECTOR, UNIVERSITY FINANCIAL AID

steep hurdles if they want to attend medical school, as candidates are often selected based on science-related grade point averages and Medical College Admission Test scores. The Danellas share Jefferson's vision of nurturing more empathetic and creative physicians by admitting students with more diverse backgrounds—and their generosity will help us accomplish that. And by reducing the burden of debt these students must bear, the Danella Family Scholarship will enable them to pursue careers in the specialties of their choice, without focusing on compensation.

A special matching opportunity made possible by the \$110 million gift to Sidney Kimmel Medical College from the Sidney Kimmel Foundation has made the Danellas' investment go even further. Until June 30, 2016, donors who pledge a gift of at least \$100,000 to establish a new endowed scholarship fund have their contribution matched dollar for dollar. Mr. and Mrs. Danella committed a remarkable \$500,000 to Jefferson, meaning they are actually making a full \$1 million in funding available. The Danella Family Scholarship Fund will truly give many students the gift of a lifetime.

For information about the Kimmel Matching Program for scholarships, contact Gregory Schmidt at 215-955-0435 or [gregory.schmidt@jefferson.edu](mailto:gregory.schmidt@jefferson.edu).

## ALFRED P. SPIVACK, MD SCHOLARSHIP

### SCHOLARSHIPS

**Alfred Spivack, MD '54,  
understands the value of  
a creative outlet.**

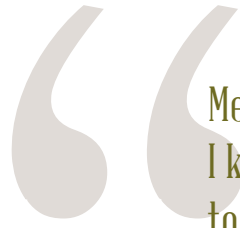
The founding director of Stanford Hospital and Medical School's coronary care unit (one of the first of its kind in the country), Dr. Spivack led a long and distinguished career that involved developing a patented defibrillator-teaching device for Hewlett-Packard, running a private practice and ultimately starting Stanford's sports medicine program

so he could teach students about one of his passions, hyperbarics (also known as diving medicine).

The stresses and challenges of medical practice led Dr. Spivack in various creative directions including underwater photography and ceramics. He even invented a new artistic technique—fusing clay and dichroic glass (glass coated with a thin film of metallic oxides, which have been vaporized by an electronic beam).

"Creating art is a meditative process and allows me to be alone and let my thoughts





Medicine is my passion, and scholarship support is helping me live my passion. I know several people who wanted to pursue a career in medicine but were unable to because of the cost. Medical school is expensive, and having a scholarship has made my journey possible.” —ZEBA HUSSAINI, SIDNEY KIMMEL MEDICAL COLLEGE STUDENT

flow. It helped me to be a better listener and observer and to understand my patients better,” Dr. Spivack says.

Throughout his life, whether it’s in medicine or art, Dr. Spivack says he has always wanted to contribute, to add something new and not live off someone else’s successes. To that end, he recently established the Alfred P. Spivack, MD Scholarship Fund to benefit Sidney Kimmel Medical College students in the Design Track, where design thinking—a “human-centered” method of problem-solving that’s as creative as it is practical—

is applied to medicine. (“It’s like majoring in medicine and minoring in design,” as co-director Bon Ku, MD, describes it.) Dr. Spivack, a 2014 Alumni Achievement Award recipient, also supports students through a second fund, the Spivack-Jaron Family Scholarship.

“The lesson Jefferson taught me, and what I tell my grandchildren, is ‘When you go somewhere, leave it better than you found it.’ This was something I have tried to follow all of my life,” he says.



Thanks in part to contributions from our many scholarship supporters, in the 2014-2015 academic year, Jefferson was able to award an estimated \$11,197,621 in need- and merit-based financial aid to 1,227 students throughout the university, which is 34% of Jefferson students.





## COMMUNITY FUNDRAISING INITIATIVES

Many Jefferson benefactors contribute more than just financial support—they also give their time. Hosting a fundraiser of any kind—from a bake sale to a beach party to a silent auction—is one of the most successful ways that friends of Jefferson provide support for our programs and facilities. Featured are individuals and groups who have mobilized others to raise funds on Jefferson's behalf.

# RECONNECT

# THOMAS JEFFERSON UNIVERSITY HOSPITAL WOMEN'S BOARD

"Innovation distinguishes between a leader and a follower." —STEVE JOBS



**Luncheons. Fashion shows.  
Jewelry sales. Cooking  
demonstrations.**

Name a type of fundraising event, and chances are the Thomas Jefferson University Hospital Women's Board has hosted one at some point during its 100-plus-year history, with proceeds supporting clinical programs hospital-wide.

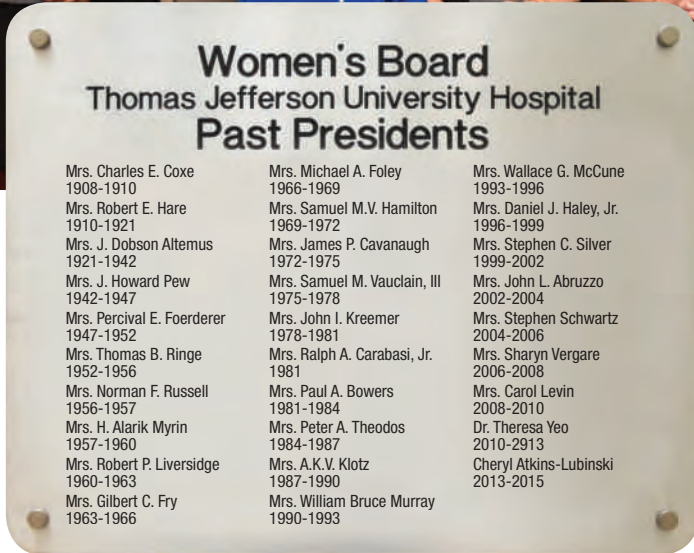
The Women's Board comprises dozens of members who donate both time and money to meet the needs of Jefferson patients. Every year, the Board receives proposals from departments across the hospital and responds with grants that have bolstered services ranging from pastoral care to cancer screening and diabetes support to refugee health. From its inception, the Board has maintained a special interest in maternity care.

One of its longest-running initiatives is the Penny Wise Thrift Shop in Ardmore, Pa., which has raised millions of dollars for Jefferson over more than half a century. Another

standout project has been the production of a beautiful hard-cover cookbook, *At the Table: A Luscious Collection of Philadelphia's Favorite Recipes*, which members spent more than two years and hundreds of hours coordinating.

Through fundraising, volunteerism, education and advocacy efforts, in fiscal year 2015, the Women's Board supported more than 20 programs at Jefferson. These included:

- A chaplain residency;
- A social work emergency fund for uninsured patients;
- A reunion celebration for families of premature infants;
- A maternity nursing education scholarship;
- Family medicine residency homeless street outreach activities;
- Post-surgery garments for breast cancer patients;
- Relief services for refugees from Nepal following the April 2015 earthquake; and much more.



Since its inception, the Women's Board has been headed by a series of remarkable leaders who have found innovative ways to support countless initiatives at Jefferson. Past presidents of the Women's Board are recognized on a plaque in the Gibbon Building. Vanessa Weisman, current president, took on the role in June 2015.

# LADIES OF PORT RICHMOND

**At a time of decline in research funding from external sources, the Sidney Kimmel Cancer Center at Thomas Jefferson University is thankful for its fundraising guardian angels in the Port Richmond section of Philadelphia.**

Started by Mary Louise Leuters, a two-time breast cancer survivor, the Ladies of Port Richmond have raised more than \$304,000 for breast cancer research at Jefferson—all from grassroots efforts such as bake sales, church breakfasts and an annual walk through their neighborhood. The group's support has provided vital seed money that has allowed our faculty to conduct preliminary research that has helped secure National Cancer Institute grants.

The Ladies of Port Richmond have created a framework that can be replicated by other individuals and organizations to replace diminished government funding of cancer

research. Mrs. Leuters has provided supreme leadership and education to fellow volunteers who have in turn increased funding to advance and accelerate clinical and investigative breakthroughs.

She started her relationship with the Sidney Kimmel Cancer Center by volunteering—making copies and sitting with people during chemotherapy—after she beat breast cancer for a second time. But that wasn't enough. She decided to start the Ladies of Port Richmond, whose members are mostly in their 70s. After watching television coverage of the Susan G. Komen Breast Cancer Walk at the Philadelphia Museum of Art, she asked her friends, "Why can't we do that in our neighborhood?"

There have been 10 annual neighborhood walks since, activities like comedy night at the Cannstatter Club in Northeast Philadelphia, casino bus trips, breakfasts and more.

Before stepping down from her 10th consecutive year as president, Mrs. Leuters has a goal to accomplish—to exceed raising \$500,000 for local breast care programs. No one would dare bet against her.



Mary Louise Leuters, Jackie Olinger and Dolores Harter.

COMMUNITY  
FUNDRAISING  
INITIATIVES

## GET YOUR REAR IN GEAR



**Research into the growing incidence of colon cancer in young individuals has found a champion in Maria Grasso, executive director of “Get Your Rear in Gear Philadelphia,” supported by the Colon Cancer Coalition.**

COMMUNITY  
FUNDRAISING  
INITIATIVES

While incidence of colon cancer has decreased by 30 percent in older adults (particularly those over 65) thanks to the use of colonoscopy, it is rising by 2 percent every year in the younger segment of the population. Researchers at Jefferson’s Center to Eliminate Cancer Disparities are using critical funding from Get Your Rear in Gear to investigate the potential for more effective treatments for younger patients.

“My father was diagnosed with stage IV colon cancer at Jefferson in 2004,” says Maria, who founded Get Your Rear in Gear in 2008 and coordinates an annual run/walk to raise awareness and funds to help fight colon

cancer. The 2015 event took place March 22 at Memorial Hall/Please Touch Museum with an impressive 140 teams and 4,000 participants.

“While my dad only lived 10 months after diagnosis, the care he received at Jefferson was second to none. The personal attention given to patients and families during these most difficult of times is so important. After starting Get Your Rear in Gear Philadelphia, we decided to support both the Sidney Kimmel Cancer Center and the Department of Surgery so they can continue to offer their superior services and support to other families with loved ones battling colon cancer.”

**Cancer is a difficult word to hear in any context, but when it affects a child, the repercussions are especially distressing.**

## SARAH PARVIN FOUNDATION

When 11-year-old Sarah Alexandra Parvin learned she had ovarian cancer, she refused to let the diagnosis define her. She continued to live her life to the fullest, exuding positivity and grace and participating in as many activities as possible. The day before she died, her classmates and teacher even joined in a toga party at her house because she didn't want to miss the event after learning about Rome.

Surrounded by loved ones, Sarah lost her cancer battle in 2006 at the age of 12. To honor her memory and help other ovarian cancer patients, her family created the Sarah Parvin Foundation, which raises research funds through two annual events—the Sarah Parvin 24 Hour Memorial SoccerFest and the Par4Parvin golf outing.

Proceeds from these events benefit the Sarah Parvin Fund for Ovarian Cancer Research at Jefferson. Jonathan Brody, PhD, director of the surgical research division, and scientists in his laboratory apply this funding toward their work to develop new approaches to fighting cancer.

By furthering ovarian cancer research, the Sarah Parvin Foundation is creating a sense of hope for the 22,000 women who will receive a diagnosis this year. "The loss of a child, or



anyone, to cancer is a devastation that is immeasurable," says Sandy Parvin, Sarah's mother. "It can make you want to give up on life, or it can make you fight harder to change the outcome for others. We chose to effect change."

# MARY KLINE CLASSIC



**How many 21-year-olds do you know who have more than 42,000 Twitter followers? Or have appeared on Forbes' "30 Under 30" list—twice?**

Alex Kline fits into both of those categories—but Alex Kline isn't your typical 21-year-old. The Syracuse University senior founded the high-school basketball recruiting website "The Recruit Scoop" at age 14 and has grown to become the nation's authority on the sport, exposing new talent and providing key infor-

mation for players, coaches and fans alike. The site has received as many as 50 million views in a single day.

Alex has combined his love of basketball with the love he has for his mother, Mary, who died of brain cancer when he was 10, to build the Mary Kline Classic—a charity high-school basketball all-star event that raises funds for cancer research. Alex donated all \$43,000 raised at the fifth annual Mary Kline Classic on May 30, 2015, to the Dr. David Andrews Brain Tumor Research Fund at Jefferson. Dr. Andrews, who treated Alex's mother during her illness, is director of the Division of Neuro-

oncologic Neurosurgery and Stereotactic Radiosurgery and is studying new ways to treat brain tumors.

"It's not every day that my career takes me to a basketball game featuring the finest young athletes from across the country, and I'm honored to be part of something so exciting and important," Dr. Andrews says. "When it comes to the Classic, Alex is doing much more than raising money. He is also raising awareness by teaching an audience that might not ordinarily think about cancer why increased research funding is absolutely imperative."



Jessica Quintin with Stephen Smith, Senior Vice President of Jefferson's Office of Institutional Advancement.

## COMMUNITY FUNDRAISING INITIATIVES

# QUINTIN FOUNDATION

**An avid exerciser and “the picture of health,” Jessica Quintin ran a half-marathon the day before she was diagnosed with a rare form of cancer of the parotid gland, the main salivary gland, in October 2006.**

This type of cancer is so rare, Jefferson treats fewer than 30 cases per year. After having surgery at a community hospital near her home in Ocean City, N.J., Jessica began radiation therapy at Jefferson five days a week, receiving 30 treatments altogether.

The following May, she got her clean bill of health—and she remains cancer-free today. To express her gratitude to her clinicians, she started the Quintin Foundation to raise money and awareness for cancer research and care at Jefferson.

For the past seven years, the Quintin Foundation has supported basic and clinical research as well as a renovation of the waiting area in the Department of Radiation Oncology. Next up is an overhaul of the exam rooms and nurses station in the Bodine Center for Cancer Treatment, where new equipment and décor will improve the experiences of both staff and patients.

The Quintin Foundation hosted its seventh annual charity dinner and dance on April 24, 2015. Jessica called this year's event “When Life Gives You Lemons” in honor of her mother and sister, who both received preventive bilateral mastectomies at Jefferson in January. The theme could easily be applied to Jessica's own life, as she steadfastly turned the “lemons” created by her personal health issues into “lemonade” through her drive, her determination and her positive attitude.





# REAFFIRM

GIFTS AND COMMITMENTS

# LIFETIME GIVING

Jefferson owes its existence to pioneering healthcare leaders who were determined to establish an institution that reimagined healthcare delivery and education. Today, as we continue to build on that tradition, we remain grateful to those who sustain us. The Lifetime Giving benefactors listed below have contributed \$1 million or more to date to enable us to uphold the quality and innovation for which Jefferson is known. Their extraordinary support makes the impossible possible and the unattainable attainable.

- ◆ Deceased
- ▶ Consecutive Giving  
25+ Years
- ★ Current Faculty/Staff
- ✓ Parent
- ⊗ Trustee

## INDIVIDUALS

Valla ◆ & Gustave Amsterdam ◆ ▶  
 Yoshihisa Asano, PhD, DPH  
 Ursula P. Beard ◆  
 The Berk Family  
 Lennox K. Black ⊗  
 George F. Blechschmidt, MD '58 ◆ ▶▶  
 Lillian & Robert L. Brent, MD, PhD ▶▶ ★ ✓  
 Stacey L. Spector & Ira Brind ▶▶ ⊗  
 The Estate of MaryBelle Chappel  
 The Estate of William E. Conrady, MD  
 Ruth N. Cooper ◆  
 Gail ◆ & J. Wallace Davis, MD '42 ◆ ▶▶  
 Mignon E. Davis ◆  
 The Estate of Anthony DePalma ▶▶  
 The Estate of Ruth A. Nice Drake  
 Vickie & Jack Farber ▶▶ ⊗  
 Marie H. & Joseph M. Field  
 Mary R. Ganister ◆  
 Robert J. Gibbons Trust, MD '43, FACS  
 The Estate of Philip D. Gilbert  
 Viola G. Gute ◆  
 Dorrance H. Hamilton ▶▶ ⊗  
 Debra Hollander  
 Leah ◆ & George Hollander, MD '39 ◆

Lynne & Harold Honickman ▶▶ ⊗  
 Joyce & Herbert Kean, MD '60  
 Carolyn & James J. Kelly, MD '39 ◆  
 Hester C. Kind ◆ ▶▶  
 Aline E. Klussman ◆  
 Jane & Leonard I. Korman ⊗  
 Warren R. Lang, MD '43 ◆  
 The Estate of Robert E. Lau  
 Amy C. & Henry R. Liss, MD '48 ◆  
 The Estate of Virginia W. Logan  
 Ira M. Lubert ⊗  
 Jane C. MacElree  
 The Estate of Thomas Mills  
 The Estate of Leslie E. Morgan  
 The Estate of Anthony E. Narducci  
 Robert V. Nicoletti ◆ and Family  
 Nancy & Everett Novak  
 The Estate of Paula B. O'Dowd  
 Katharina T. Paparone  
 Marilyn & Arthur S. Penn ▶▶  
 Marian ◆ & William Peterson ◆  
 Martha D. Porter ◆  
 Jerrel K. Ralph  
 The Estate of Dorothy H. Rector  
 The Estate of Sidney B. Rosenbluth  
 Justin F. Serafin

Antonio J.L. Simoes, MD  
 Mary Ann & Albert F. Stevens  
 Evelyn & Daniel Tabas ◆  
 Alison & Mark Weinzierl  
 Betty & James D. Wentzler, MD '46 ◆  
 Janine & Jeffrey Yass



## ORGANIZATIONS

AccessMatters  
American Association for Cancer Research  
American Board of Family Practice, Inc.  
American Cancer Society, Inc. ▶▶  
American Diabetes Association ▶▶  
American Heart Association ▶▶  
American Lung Association  
The Annenberg Foundation  
The Arcadia Foundation  
Armenian General Benevolent Union  
Arthritis Foundation ▶▶  
Azienda USI of Imola  
Ida E. Baldrige Trust  
The Edward P. Beach Charitable Trust  
Boston Scientific Corporation ▶▶  
Breast Cancer Research Foundation, Inc.  
Bristol-Myers Squibb Company ▶▶  
Thomas D. M. Cardeza Trust  
Leonard J. Clark Trust  
The Edna McConnell Clark Foundation  
Connelly Foundation ▶▶  
Council for Tobacco Research  
Dermatology Foundation ▶▶  
Alfred W. Dubbs Trust  
Mignon Dubbs Trust  
The Ralph and Marian Falk Medical  
Research Trust

Family Planning Council of Southeastern  
Pennsylvania ▶▶  
Percival E. and Ethel Brown Foerderer  
Foundation ▶▶  
GlaxoSmithKline Foundation ▶▶  
The Raymond C. Grandon Trust ▶▶  
Hasumi International Research Foundation  
Howard Heinz Endowment  
C. Robert Jackson Trust  
Robert Wood Johnson Foundation  
Juvenile Diabetes Foundation International  
The Kahn Testamentary Foundation ▶▶  
W. M. Keck Foundation  
The Sidney Kimmel Foundation  
F. M. Kirby Foundation, Inc.  
Susan G. Komen Breast Cancer  
Research Foundation ▶▶  
The Edna G. Kynett Memorial Foundation ▶▶  
The Margaret Q. Landenberger  
Research Foundation  
March of Dimes Birth Defects Foundation ▶▶  
The Marcus Foundation, Inc. ▶▶  
Lucille P. Markey Charitable Trust  
The Benjamin & Mary Siddons Measey  
Foundation ▶▶  
Merck & Co., Inc. ▶▶  
Merck Research Laboratories  
Muscular Dystrophy Association ▶▶  
National Multiple Sclerosis Society ▶▶

The Craig H. Neilson Foundation  
Open Society Institute  
Pancreatic Cancer Action Network  
The William Penn Foundation  
The Pew Charitable Trusts ▶▶  
The Philadelphia Eagles  
The Philadelphia Foundation ▶▶  
Prostate Cancer Foundation  
Reconstructive Orthopaedic Associates, II P.C.  
Roche Laboratories, Inc. ▶▶  
Herbert C. Rorer Trust ▶▶  
The Rothman Institute  
Sanofi-Aventis Pharmaceuticals, Inc. ▶▶  
Sledd Charitable Foundation ▶▶  
The W. W. Smith Charitable Trust ▶▶  
Floyd W. Stevens, MD Trust  
Louise M. Stoudt Trust  
The Stratton Foundation  
Synergy Pharmaceuticals, Inc.  
Targeted Diagnostics & Therapeutics, Inc.  
Teva Neuroscience, Inc. ▶▶  
Thomas Jefferson University Cardiology  
Research Foundation  
Finley L. Walton Trust  
The Whitaker Foundation  
Women's Board of Thomas Jefferson University  
Hospital ▶▶

# INDIVIDUAL GIVING

Philanthropic support is what propels Jefferson toward the next breakthrough, the next cure, the next great innovation. The following individuals contributed \$500 or more between **July 1, 2014, and June 30, 2015**, to help ensure a margin of excellence in all that we do at Jefferson. Thanks to their generosity, what has always been great can be made even better.

◆ Deceased

▶ Consecutive Giving  
25+ Years

⊛ Current Faculty/Staff

✓ Parent

⊛ Trustee

## \$1,000,000 AND ABOVE

Yoshihisa Asano, PhD, DPH  
Vickie & Jack Farber ▶ ⊛

Robert J. Gibbons Trust, MD '43 FACS  
Debra Hollander

Leah ◆ & George Hollander, MD '39 ◆

Jane & Leonard I. Korman ⊛

## \$500,000–\$999,999

Mary Jo & James Danella  
Arlene & Stanley Ginsburg  
Farid I. Haurani, MD '56, '58 ◆  
Ellen W. Krauss-Taylor ◆  
Mary Ann & Albert F. Stevens  
Kimberly V. Strauss  
Janine & Jeffrey Yass

## \$250,000–\$499,999

Carol A. Ammon, MBA, & Marie E. Pinizzotto,  
MBA, MD '88  
Valla Amsterdam ◆  
Julia M. Duane ◆  
Marie H. & Joseph M. Field  
Lynne & Harold Honickman ⊛  
Idajane & Bernard L. Segal, MD ⊛  
Alison & Mark Weinzierl

## \$100,000–\$249,999

William J. Antognoli, MD '61  
Barbara & Edwin Berkowitz

Donald E. DeRossi, Sr.  
Donna & Joseph J. Ferrier

Bjorg & Bjornar Hermansen ◆

Jeanne E. Jenkins  
Roy Korson, MD '47 ◆

Carole & Jules Lieberman  
Amy C. Liss

Susan L. McGinnis  
Jill & Alan B. Miller

Nadia & Antoine Moukarzel ✓

Lea A. Moukarzel, MD '14 & Jeffrey F. McMahon,  
MD '14 ⊛

Esther J. Nash, MD & David B. Nash, MD, MBA ⊛  
Mark R. Nicoletti

Robert V. Nicoletti ◆

Lori A. Peruto, Esq. & John M. Peruto, Esq.  
Catherine T. Rommel, MD '80 & F. Michael  
Rommel, MD '81

Joel Rosenbloom, MD, PhD ⊛

Marsha & Richard H. Rothman, MD, PhD '65, '68  
⊛ ⊛

William T. Sallee, MD '49 ◆

Carole Schlocker & Ellis R. Levin, MD '75, '78 ▶▶

Hae W. Shin, MD '94 & John J. Park, MD '94

Alfred P. Spivack, MD '54

Arlene E. Stratton

Ruth & Louis Vignati, MD '70

## \$50,000–\$99,999

Daniel L. Backenstose, MD '50 ◆

Nancy & James G. Baxter

The Berk Family ▶▶

Marty & Richard Berk

Wendy & Morton R. Branzburg, Esq.

Edward DuMont & Newton E. Kendig, II, MD '84

Doris & Raymond C. Grandon, MD '45 ▶▶

Doreen & Kenneth B. Gray, Jr.

Philip S. Green, MD '56 ◆

Robert Halinski

Wendy & John Havens

Louise & Peter Havens

Judith & D. Gregory Horrigan

Joyce & Herbert Kean, MD '60

Charles Kerbeck

Frank Kerbeck

George Kerbeck

Xin Zhang & Kehau Li, MD '02

Nancy & Everett Novak

Beverly & William Rosoff

Irvin G. Schorsch, III

Angela D. Smith, MD & Peter V. Scoles, MD '70 ⊛

Lauren & Alexander R. Vaccaro, MD, PhD, MBA  
'92 ⊛ ⊛

Marc Zemel

## \$25,000–\$49,999

Elizabeth Atterbury  
Elyse & Max Berger  
Lennox K. Black 🌟  
Joan & Murray I. Blackman, Esq.  
Edwin R. Boynton, Esq.  
David Brind  
Clara A. Callahan, MD '80,'82 🌟 & Peter Goodman ▶  
Aisha S. Chaudhry, DPM & Iftikhar M. Chaudhry, MD '93  
Margaret & Bertram T. Chinn, MD '87,'92  
Danièle & Thomas S. Connelly  
Dorothy & Anthony J. DiMarino, Jr., MD 🌟🌟  
Constance & Paul Dry  
Michele & Dominic J. Frederico  
Charles H. Gehret  
Devyn Gehret  
Fran & Richard C. Gozon 🌟  
Elizabeth & Philip D. Green  
Genevieve & Steven I. Gross  
Patricia & John Imbesi  
JoAnn & George Jenkins  
Stephen B. Klein  
Steven H. Korman  
Beatrice 🌟 & Willard A. Krehl, MD 🌟  
Beth & William A. Landman 🌟  
Suzanne Mader  
Josephine C. Mandeville ▶ 🌟  
Donald W. Marshall

Patricia & Robert Mills  
David P. Montgomery  
Gail L. Myers  
Kymberlee & Christopher Olson  
Sandra & Keith Parvin  
David Pizzica  
Melissa & Paul Pizzica  
Connie & Theodore Popp, Jr. 🌟  
Mariellen & Stephen Raab  
Suzanne F. & Ralph J. Roberts 🌟  
Aileen K. & Brian L. Roberts  
Marcia & Ronald Rubin  
Amanda Ryan, VMD  
Patricia & Peter J. Scarperi  
Stefanie & Robert K. Sigal, MD '85  
Lin & Edward M. Snider  
Deborah & Jeffrey Waranch  
Marion & Joseph Wesley

## \$10,000–\$24,999

Marta & Robert S. Adelson, Esq. 🌟  
Nina & William Albert  
Sue E. Alderman '79 & Mark Alderman, Esq. 🌟  
Dennis Alter  
Susan E. Amaturio, MD & Lawrence V. Amaturio  
Christine A. Arenson, MD '90,'93,'95 🌟 & David Arenson  
Ellen Bachow-Churchill & Winston J. Churchill  
Andrea Hniedziejko & Russell C. Ball, III  
Christopher A. Barbarevech, MD '92,'95,'97

Tracy & Carl E. Becker, II, MD '94,'00  
Carol S. and James A. Beers  
Janice R. Bellace, Esq. 🌟 & Geoffrey Latta  
Roseanne & John L. Biddulph  
Judith & Alvin Block  
Lillian & Robert L. Brent, MD, PhD 🌟✓  
Stacey L. Spector & Ira Brind 🌟  
Vivian & Tomas Cabrerizo  
Kathleen & Richard Campbell  
Lea & Nicholas Caramalis  
Thomas J. Carter, Jr.  
Mark H. K. Chim  
Suzanne & Norman Cohn  
Gerardine & Dennis Colgan  
Maryetta & James Cook  
Janice & Joseph Coradino  
Rosemary & Thomas P. Costello 🌟  
Donald B. Crawford, Sr.



## INDIVIDUAL GIVING

### \$10,000–\$24,999 CONTINUED

- ◆ Deceased
- ▶ Consecutive Giving 25+ Years
- ★ Current Faculty/Staff
- ✓ Parent
- ⊛ Trustee

Joan Dalburg  
 Kimberly & Louis D'Ambrosio  
 Carlyn S. Darby '80 & Stephen Darby  
 George E. Deming, III ⊛  
 Gertrude DePalma ▶▶  
 Gloria & Jonathan Detwiler  
 Lois Dinon  
 Richard J. Dittrich, DO '77  
 Susan S. Donahue  
 Kathryn & John Donnelly  
 Ellen Farber  
 Mary & Joseph Fenkel  
 Fay & Mark Fisher  
 Ellen H. Funk & Ann M. O'Keefe, Esq.  
 Donna & Alexander C. Gellman, MD '69 ▶▶



Tricia Gomella, MD & Leonard G. Gomella, MD  
 ⊛ ✓  
 Sandra & Kirk E. Gorman ⊛  
 Marina A. Grace ⊛  
 Christina & Steven Graham  
 Nicola & Kenneth A. Graham ⊛  
 Richard J. Green

H. Richard Haverstick, Jr. ⊛  
 Lauren & Michael J. Heller, Esq. ⊛  
 Melva J. Herrin  
 Richard W. Hevner ⊛  
 Ya-Ming Hou, PhD ⊛ & Howard B. Gamper, Jr., PhD ⊛  
 Steven Johnson  
 Sharon & Robert K. Josloff, MD '89  
 Sara & Hyman R. Kahn, MD '56 ✓ ⊛  
 Barbara & Charles Kahn  
 Ilene & Kenneth Kasdan  
 Louise & William M. Keane, MD ⊛  
 Mary & John Kessler  
 Colleen A. Wyse & Stephen K. Klasko, MD, MBA  
 ⊛ ⊛  
 Sallie & Berton Korman  
 Joyce & Samuel Krain, MD '61,'66 ✓  
 Suzanne & Jim Ksanskak ⊛  
 Rosalie C. Lerman  
 Shelley Wallock, PhD ⊛ & David Lerman  
 Jeanette Lerman-Neubauer & Joseph Neubauer  
 Frances & Leon Levy  
 Jennifer & Jack Listanowsky  
 Nadine ◆ & Neil G. Lubarsky ⊛  
 Lisa & Jamie J. Maguire, Jr.  
 Mary M. Maguire ▶▶  
 Susan Maguire  
 Carmela & Phillip J. Marone, MD, MPH '57,'63,'07 ▶▶  
 Rebecca & Dan Matthias ✓ ⊛  
 Susan & Frank Mechura  
 Carol Pate & John L. Melvin, MD ⊛  
 Annabell Mogul  
 Ann & Thomas B. Morris, Jr., Esq. ▶▶ ⊛  
 Susan ⊛ & Alexander Munro  
 Janice & Britton H. Murdoch ⊛  
 Suzanne & Ronald J. Naples ⊛  
 Claudia & Levon N. Nazarian, MD '92 ⊛

Nicholas Nicolaides, PhD '92  
 Elizabeth & Richard R. Noack ◆  
 Sandra A. Norman, PhD & Maurice F. Norman, PhD  
 Karen D. Novielli, MD '87,'90,'92 ⊛ & Stephen Novielli  
 Aurora C. O'Brien  
 Jeffrey P. Orleans ⊛  
 Zoe & Dean Pappas  
 Linda & David L. Paskin, MD '64 ⊛  
 Melina M. Pellini, PhD '93 & Michael J. Pellini, MBA, MD, '97  
 Brian M. Peters, Esq.  
 Edwin Pratt, Jr.  
 Elliot J. Rayfield, MD '67  
 Jennifer B. Reddick  
 Constance & Richard T. Riley ⊛  
 Joyce & David A. Rivas, MD '84,'91 ▶▶  
 Caro U. ⊛ & Robert H. Rock, PhD  
 Eve & Marc R. Rosen, MD ⊛  
 Susan Hollenstein & Howard D. Ross  
 Sharon Schutte-Rodin, MD & Neal Rodin  
 Judith Creed & Robert Schwartz  
 Edwin Seave, Esq.  
 Patricia & Jeffrey Seddon  
 Sandra & Stephen Sheller  
 Judith & Jacob Shipon ✓  
 Rachel & David M. Shipon, MD '96,'03 ⊛  
 Frederick A. Simeone, MD  
 Michael Singer  
 Lawrence S. Smith ◆  
 Kellie Vargo & Manuel N. Stamatakis  
 Anna & Kenneth A. Sullivan  
 Frederick P. Sutliff, MD ◆  
 Susan & Paul J. Svigals, MD  
 Beth Ann Swan, PhD ⊛ & Eric J. Swan  
 Jackie & Gerard H. Sweeney ⊛

Diane M. Todd  
Midge Vaccaro  
Sharyn & Michael J. Vergare, MD ✨  
Joan & Tim Walsh  
George D. Wasserberger  
Sharon Pinkenson & Joseph H. Weiss  
Harriet & Lawrence Weiss  
Pamela & R. Richard Williams ✨  
Anne & Daniel Wilms  
Rose & Norman M. Woldorf, MD '64 ✨✔  
Sallie & Steven Zalkind

## \$5,000–\$9,999

Stacy ✨ & Jamal Ahmad, MD '06 ✨  
Barbara & Todd J. Albert, MD, FACS '92  
Pramila R. Anne', MD ✨ & Michael J. Ramirez, MD ✨  
Stephen P. Artusi  
Claire & Hans Baumann  
Richard C. Berger  
Dorothy & David R. Binswanger ✨  
George F. Blechschmidt, MD '58 ✨  
Evelyn & Howard Bock  
Betty Gross Eisenberg & Barry E. Bressler, Esq.  
Joan & Curt J. Byerley  
Cristina G. Cavalieri, Esq. ✨ & Michael Moughan,  
PhD  
Violet & Steve T. Chen, MD '84  
Gudrun Cobb, MD '96 & Bradley D. Cobb  
Ian M. Comisky  
Ann Coyle ✔  
Elizabeth A. Dale, EdD ✨  
Anna M. D'Amico, MD '72 & Andrew E. Feiring,  
PharmD  
Susan & Roger B. Daniels, MD ✨  
Barbara M. Day ✨  
John Ekarius ✨  
John M. Elliott, Esq.

Mark D. Falls, MD '87  
Linda & Michael J. Fazio, MD '90  
Suzanne & Martin M. Fenster, MD '72  
Rebecca S. Finley, PharmD, MS ✨  
Phyllis Flomenberg, MD ✨ & Neal Flomenberg,  
MD '76 ✨  
Lois G. Foxen '65  
Linda Frankel  
Sarah & S. Robert Freedman, MD '69  
Kathleen D. Gallagher-Intoccia '90 ✨  
& James Intoccia  
James E. Gjerset  
Lena Glaser  
Richard Glaser  
James J. Golden, III ✨  
Barbara Lepak & Gerald B. Grunwald, PhD ✨  
Elizabeth & Henry F. Harris, Jr.  
Maureen & Brian G. Harrison ✨  
Gerald R. Heep  
Alexandra S. Heerd, MD '87 & Paul Heerd  
Debra & Paul C. Heim '87  
Megan J. Herman  
Cindy & William Horton  
Nancy & Joseph Irenas  
Gwen A. Jacobs ✔  
Judy & Robert Keller  
William K. Kelly, DO ✨  
Lorraine C. King, MD '75,'77  
Marie & Christopher J. Kneizys ✨  
Mary & Stanley L. Kocot, MD '57  
Pamela & Bradley J. Korman  
Steve Langhans  
Ginger & Patrick J. Lavelle, MD '45  
David Learned  
Janet E. Levitt  
Rhonda & William R. Levy  
Kathleen & Tom Lewis

Robin Kershaw & Ronald J. Librizzi, DO  
Kathleen & Peter Linneman  
Marcia & Howard Lipschutz  
Victoria L. ✨ & Thomas A. Maguda, MD '39 ✨  
Kathryn & Greg Marik  
Calvin R. Maurer  
Catherine & David McQuaid



Thomas D. Meade, MD '83,'88  
Charlotte & Geno J. Merli, MD '75,'80,'91 ✨  
Thomas A. Meyers  
Elle Milani, MD  
Frank A. Milani, MD '59  
Kristen Milke & Denis J. Milke, MD  
Justin Mirigliani  
Benjamin Olewine, III  
Nancy & Rocco Ortenzio  
Elissa Topol & A. Lee Osterman, MD ✨✔  
Pauline K. Park, MD '82,'87 & Jack Panitch ▶  
Gail & Arthur Pasquarella  
Donna & Ronald V. Pellegrini, MD '63 ✔  
Robert L. Perkel, MD '81 ✨  
Richard G. Pestell, MD, PhD, FACP ✨  
Jay J. Pillai, MD '92

## INDIVIDUAL GIVING

- ◆ Deceased
- ▶ Consecutive Giving 25+ Years
- ★ Current Faculty/Staff
- ✓ Parent
- ⊕ Trustee

### \$5,000–\$9,999 CONTINUED

Janice E. Nevin, MD, MPH '87,'90 & Charles A. Pohl, MD '87 ⊕  
 Donna & Ted Popp ◆  
 Mary & James J. Purtill, MD '93,'99,'00 ⊕  
 Vijay M. Rao, MD '78 ⊕ ⊕ & Angara K. Rao, MD '77,'79  
 Susan L. Rattner, MD ⊕ & Kenneth D. Mendel, MD  
 Steven J. Ravitz  
 Sheryl & Robert S. Ream, MD '86  
 Jeannette & Ernest L. Rosato, MD '90,'96 ⊕ ✓  
 Wendy & Paul Rosen  
 Lyn M. Ross  
 Elizabeth & Daniel F. Ryan, III, Esq.  
 Renee & Alfred C. Salvato, Jr. ⊕  
 John P. Salvo, MD '61,'83 ✓  
 Michele & David Schumacher  
 Nancy & James C. Schwartzman  
 Dara & Daniel I. Shrager, MD '99  
 Catherine & Samuel Sidewater  
 Steven J. Sidewater  
 Jeanne & Herbert Siegel  
 Merle & James H. Simon, Jr.

Constance S. Smukler  
 Jacqueline Spring-Stapel & William Stapel  
 William E. Staas, Jr., MD '62 ▶▶  
 Shirley F. Stambaugh ▶▶ ✓  
 Patricia & Paul Stankard  
 Elizabeth ◆ & Charles J. Theisen, Jr., PhD  
 Maud & Brian P. Tierney, Esq. ⊕  
 Angela Steele-Tilton & Donald C. Tilton, DO '74  
 Barbara & William M. Troetel, PhD '72  
 Judith & Mark L. Tykocinski, MD ⊕  
 Elaine Tan, PhD & Jouni J. Uitto, MD, PhD ⊕  
 Cynthia & George P. Valko, MD '86,'89 ▶▶ ⊕  
 Eleanor L. '09 ⊕ & Roger Vanderklok  
 Sophie & Francis W. Wachter, MD '60  
 Linda Wallner  
 Judith Hearst & Nathan Wei, MD '75  
 Howard H. Weitz, MD '78,'82,'84 ⊕  
 Garth Weldon  
 Frances & Marvin Welsch ◆  
 Diane & Richard C. Wender, MD '82 ⊕  
 Nadine P. Wenner, MD '76 & Steven M. Wenner, MD '74 ▶▶  
 Betty Wharton  
 Felice & Thomas E. Wiener, Esq.  
 Cindy & Stephen Yingling

### \$2,500–\$4,999

Mark Adler  
 Patricia & Joseph J. Andrews, MD '91  
 Martha & Kurt Asplundh  
 Catherine M. Babskie  
 Barbara Bachow, MD & Terry B. Bachow, MD '79  
 Linda Baka '84 & Joseph J. Baka, MD '86  
 Marcia & Steven W. Bass, PhD '70  
 Corin Beck  
 Wendy & Stephen T. Bell, MD '80  
 Marguerite Bernstine

Marluce Bibbo, MD, D.S.C. ⊕  
 Gene B. Bishop, MD  
 Delores & Lewis W. Bluemle, Jr., MD  
 O. R. Borchers  
 Dolores & Ronald Bowlan ⊕  
 Diane & Richard E. Brennan, MD '72,'76  
 Debra & Kenneth S. Breslin, MD '87  
 Gertrude & Louis Brown, MD '61 ▶▶ ✓  
 Mary & Warren W. Brubaker, MD '54  
 Patricia A. Brumbaugh, MD '88 & John Carter  
 Marianne & John W. Buehler, Jr.  
 Valerie & Thomas A. Carnevale, MD '83  
 Susan & William L. Carroll, MD '89  
 Marlene & Patrick V. Castellano, MD '59  
 Marie E. Robb, MD '79 & Kenneth M. Certa, MD '79,'83,'89 ⊕  
 Hedda & Hugh Chairnoff  
 Cora & Allen E. Chandler, MD '61,'64  
 Catherine S. Kim, MD '02,'07 & Eddie Chang, MD '00  
 Sharon M. '79 & Mark D. Chilton, MD '80,'86 ▶▶  
 Lily L. Chinn ▶▶ ✓  
 Norman N. Chinn  
 Praveen Chopra ⊕  
 Christopher P. Cifarelli, MD, PhD '03,'05  
 Judith Clark  
 Claire & D. Walter Cohen, DDS  
 Georgia & Francis R. Colangelo, MD '84  
 Raelynn Cooter, PhD ⊕  
 Florence D. Cotler  
 Gayle & Harry R. Cramer, Jr., MD '71 ▶▶  
 Trudy & James E. Culbert, MD '57  
 Helen & Theodore J. Daly, MD '83  
 Susan & Greg Danilow  
 Janet & Marvin Dannenberg, MD '54 ▶▶ ✓  
 Ellen & Edwin Dashevsky  
 Richard L. Davidson, PhD ⊕  
 Nancy B. Davis





Karen & Michael J. Demangone, MD '89  
 Robert B. Den, MD ✪  
 Marilyn & Simon Denenberg  
 Michelle M. DeSchryver  
 Sandeep P. Deshmukh, MD ✪  
 Jane & John M. Dick, MD '63 ✓  
 Anna & Robert J. Diecidue, MD, DMD '92,'97,'05 ✪  
 Roseann L. DiRusso, MD '91 & Gregory B. DiRusso, MD '91  
 Anne B. Docimo, MD, MBA ✪ & Steven G. Docimo  
 Martin L. Dresner, MD '65  
 Paul P. Duzmati  
 Bryan Early  
 Rachele & Dion R. Ehrlich, MD '77 ✓  
 Marily & Donald F. Eipper, MD '64  
 Michelle & Michael English  
 Kathleen & Russell C. Erath  
 Rebecca & James Erdmann, PhD  
 Erik Federman  
 Sylvia R. Beck & Jay L. Federman, MD '70  
 Kathleen & James W. Fox, IV, MD '70,'74 ▶ ✓ ✪  
 Stephen M. Foxman  
 Esther Fried  
 Reanette & Stephen Frobouck  
 Frank Fuzo  
 Joan Garde  
 Eugene Garfield, PhD  
 Laurel & George Gerhat  
 Cristina Geso ✪  
 Doris & Pat Gillick  
 Negar Golesorkhi, MD '08  
 Meltem & Joseph S. Gonnella, MD ✪  
 Robert P. Good, MD '73,'78 ✪  
 Diane & Mark G. Graham, MD '81 ✪  
 Kimberly & Thomas G. Green, MD '94  
 Howard E. Greenberg, MD '92  
 Patricia & Thomas D. Griffin, MD '80 ▶

Christine A. Grissom, MD '91,'92  
 Janet E. Guthart ✪  
 Barbara & Joseph A. Habig, II, MD '83  
 Luke H. Halinski  
 Claudia & Harry A. Hamburger, MD '79  
 Sylvia S. Hamburger  
 Merle & Joseph H. Happe  
 Kathy & William Harral, III  
 Dawn & Michael F. Harrer, MD '93 ✪  
 Mitchell S. Harris ✪  
 Esther & Stephen Hart  
 Kimberlee & Edward J. Hayes, MD '07,'08  
 Gail M. Herrine, MD '87,'93 & Steven K. Herrine, MD '90,'95 ✪  
 Gittel & Alan S. Hilibrand, MD ✪  
 Joseph Hill ✪  
 Edna W. Hneleski '58 ▶ ✓  
 Judith E. Hodgson  
 Deborah Baden & James T. Howard, Jr., MD '59 ✓  
 Janice & Briley Howell  
 Marian M. Huang, MD '82 & Kwok-wai H. Chau  
 Mary W. '72 & Peter R. Hulick, MD '73 ▶ ✓  
 Charles M. Intenzo, MD '84,'86 ✪  
 Linda K. Izquierdo, MD '69  
 Annette & Robert M. Johnson, MD '74  
 Sally A. Johnson, MD '76 & William Johnson  
 Marie Kairys, MD '88,'91 & John C. Kairys, MD '88,'93 ✪  
 Madhu P. Kalia, MD, PhD ✪  
 Jean & Gregory C. Kane, MD '87,'93 ✪  
 Barbara & Hratch Kasparian, MD  
 Tae Ock Kauh, PhD & Young C. Kauh, MD '71 ▶ ✪ ✓  
 Angela & Thomas R. Kay, MD '70 ▶  
 Leroy E. Kean  
 Jennifer L. Kemmerer  
 Phyllis & James A. Kenning, MD '74 ✓

Katherine M. Kinsey, PhD '63 & M. Dean Kinsey, MD '69,'72,'73  
 Susan & William J. Kitei, MD '75 ✓  
 Christine & John A. Kline, MD '70 ✓  
 Devora & Karl G. Klings, MD '56  
 Karen Knudsen, PhD ✪ & Brian Costello  
 Rachna & Mahesh Krishnan, MD '94  
 Anna & Justin P. Kubeck, MD '02  
 Lee S. ✪ & Richard E. Landau, MD  
 Lydia M. Lasichak, MD '76 & Nelson K. Lytle, MD '76



Meredith & Hugh J. Lavery ✪  
 Jason B. Lee, MD '93,'97,'98 ✪  
 Sharyn & Dennis Levitt  
 Anne & Charles G. Lewis  
 Dawnette A. Lewis, MD '03  
 Carol Petrillo-Lintz & Robert M. Lintz, MD '78  
 Kathleen ✪ & Scott Lockman  
 William E. Logan, MD '68,'70 ▶  
 Jane M. Longacre, MD '80 & Stephen L. Longacre, PhD '80  
 Vicki & John P. Lubicky, MD '74  
 Diana J. Mackie  
 Douglas J. MacMaster, Jr., Esq. ✪

## INDIVIDUAL GIVING

◆ Deceased

▶ Consecutive Giving  
25+ Years

★ Current Faculty/Staff

✓ Parent

⊛ Trustee

### \$2,500–\$4,999 CONTINUED

Lynda & David P. Maguire, MD '82,'87 ★  
 Anita & William Mancoll, MD '60 ✓  
 Joanna & Gerald A. Mandell, MD '69 '74  
 Jake ⊛ & Joseph C. Marini, PhD '97,'02  
 Anne L. DuBreuil, MD '80 ⊛ & Fred W. Markham, Jr., MD '79 ⊛  
 William J. Marshall  
 Adrienne & George Martin, MD  
 Alanna & Fredric J. Matlin, MD '81  
 Stacey Meadows & Christoph Spath  
 Aparna K. Mele, MD '04 & Carl D. Mele, MD '97,'00,'03  
 Audrey & Stanley Merves  
 Cheryl A. Meyer '72 & Gerald E. Meyer, PharmD ⊛



Trudy & Michael K. Montella, MD '86  
 Nayzario Monticolo  
 Michael Moon  
 Jonni S. Moore, PhD '84 & Roger Addison Moore, MD  
 Susan & Thomas A. Moore, II, MD '84 ▶  
 Carole & Stanton Moss  
 Carol & Michael Mullin  
 Scott Myers

Thomas Norris  
 Maryann & Jeffrey Novak  
 Marla & Donald Novy, MD  
 Jeff Oakley  
 Karen & Philip C. Ovadia, MD '98  
 Vicki & Philip Pace  
 Margaret Pelczar  
 Anita & Richard Pesot  
 Geraldine & Robert C. Petrucelli, MD '81 ✓  
 Anne Marie & James J. Pettit  
 Jeffrey L. Piemont  
 Norma Jean Johnson, MD '96 & Michael E. Pollack, MD '97  
 Carol ⊛ & Howard K. Rabinowitz, MD ⊛  
 Chryssanthe & Timothy J. Rafael, MD '11  
 Lee & Warren L. Robinson, Jr., MD '78  
 Donna M. DiCenzo, MD '85 & Robert L. Robles, MD '86  
 Ruth E. Ganister, Esq. & Anton H. Rosenthal, Esq.  
 Eileen & William F. Rosner, MD '75 ✓  
 Marianne & Wayne K. Ross, MD '83  
 Barbara & Richard L. Rovit, MD '50  
 Melissa T. Salazar ⊛  
 Ferral & Samuel Salen, MD '65  
 Lorraine Dugoff, MD & William D. Schlaff, MD ⊛  
 Maria C. Scott, MD '87 & Matthew Scott  
 Ava Seave  
 Meredith L. Seigle, Esq.  
 Carol Lally Shields, MD & Jerry A. Shields, MD ✓  
 Linda D. Siracusa, PhD ⊛ & Arthur M. Buchberg, PhD  
 John D. Six, MD '00,'03  
 Stephen T. Smith ⊛  
 Sally & Michael H. Snedden, MD '79,'84 ▶  
 Linda & Robert W. Solit, MD '61,'66,'69 ✓  
 Wai Chang Spaide, PhD '83 & Richard F. Spaide, MD '81  
 Jill & Joseph R. Spiegel, MD '79,'89 ⊛  
 Therese & James F. Squadrito, Jr., MD '80,'85  
 Arthur C. St. Andre, MD '75  
 Marilyn & John R. Starynski, MD '80  
 Lisa & Leonard Stefik  
 Carol & Robert M. Stein, MD '68  
 Cynthia & Douglas C. Sutton, MD '89,'94,'95  
 Joanne Chao & Felix K. Tam, MD '81 ▶  
 Roberta R. Tanenbaum  
 Patricia Taylor  
 Barbara & Stanford B. Trachtenberg, MD '64 ▶ ✓  
 Kathleen & Stephen Tranquillo  
 Edna & Stephen G. Vasso, MD '62,'68  
 Denise G. Voloshin, MD '89 & Michael Voloshin, MD  
 Joseph Watson  
 Richard J. Webster, RN, MSN '93,'96 ⊛  
 Gary A. Wein  
 Joan & Marc Weiner  
 Jules Weinsieder  
 Nancy R. Schauer & J. Thomas Williams, Jr., MD '63,'68  
 Rebecca Wilson  
 Judith & Jack Yampolsky  
 Theresa Yeo, PhD, MPH, CRNP ⊛ & Charles J. Yeo, MD ⊛ ⊛  
 Bernadine & Henry L. Yim, MD '56 ▶ ✓  
 Karen Paul Zimmer, MD, MPH & Gary Zimmer, MD  
 Lynda C. Schneider, MD '83 & Leonard I. Zon, MD '83

## \$1,000–\$2,499

Rosita & Robert Abel, Jr., MD '69 ✓  
Wendy B. Abramson, MD '00 & Peter Pastuszko, MD '03  
Pat & Franklin K. Ackerman, Jr.  
Edna & Kenneth Adelberg  
Susanna & Dean Adler  
Monisha Nayar, PhD & Salman Akhtar, MD ✪  
Mary P. Hufty, MD '79 & Daniel S. Alegria, MD '79  
Thomas J. Allardyce, MD '90,'95  
Frances & Robert M. Allen, MD '54 ▶ ✓  
Ellen & Albert L. Amshel, MD '52 ▶  
Sylvia & Vincent C. Andracchio, MD '56 ▶  
Nicolina & Peter J. Andrews, Sr., MD '59 ▶ ✓  
Robert E. Angevine  
Nethra S. Ankam, MD '03,'07 ✪  
Sue & Warren Appleman, MD '71  
Christine Aquino  
Barbara & Michael Arning  
Anne Romanic Arnold, PhD '92 & William V. Arnold, MD, PhD '98,'03 ✪  
Igor Astsaturov  
Barbara F. Atkinson, MD '74 & G. William Atkinson, MD '67,'70  
Pauline Liu & Otto Y. Au, MD '57 ✓  
Choi & Clement C. Au, MD '85 ✪  
Rita S. Axelrod, MD ✪  
Nancy & Charles Baechler  
Robert C. Bair, MD '50 ▶  
Carol J. Baka ✓  
Jocelyn D. Baker  
Colleen & Brock K. Bakewell, MD '84  
Kathleen & Ernest M. Baran, MD  
Judy & Gary Bard  
Eileen & Richard Bazelon  
Suzanne Behr  
Elizabeth & J. Sumner Bell, III, MD '79

Loretta & Jeffrey L. Benovic, PhD ✪  
Elcinda L. Bergethon, MD '77,'83 & Peter R. Bergethon, MD '83  
Natalie Berman  
Patricia & Anthony Bertolino  
Robert Bertucelli  
Tiffany & Chad Billingsley  
Gay Greene & John K. Binswanger  
James J. Black, III  
Francine Blattner, MD & Stephen Blattner, MD  
Taryn & Eric W. Blomain, MD '73 '78  
Lauren & William D. Bloomer, MD '70  
Delana & James P. Blore, Jr., MD '72 ✓  
Nancy & Robert A. Blum ✪  
Francis B. Boland, Jr., MD '62  
Ronald J. Bolognese, MD  
Patricia & Clark Bonetti  
Catherine & Robert P. Boran, Jr., MD '78,'83  
Mary & Joseph F. Borzelleca, PhD '56  
A. Joanne & John H. Bowman, MD '58 ▶  
George F. Boykin  
Teenie & Jim Bracken  
Veronica & Michael J. Bradley  
Ronni & Ira Brenner, MD '76  
Harvey S. Brodovsky, MD '61 ▶  
N. Judith Broudy  
Peggy & John H. Brown, MD '74 ✓  
Jo & Arthur E. Brown, MD '71 ▶  
Joseph N. Brown  
Robert A. Brown, MD '55 ▶  
Sandra & Steven H. Brown, MD '92  
Terry & Alexander Brucker  
Maripeg & James J. Bruder  
Elinor & James M. Buck, III  
John W. Burkhart  
Lauren & Roger W. Cameron, DO '83  
Cynthia F. Capers, PhD

Barbara & Robert L. Capizzi, MD  
Lois & Howard J. Caplan, MD '72,'79  
James B. Carty, Jr., MD '70 ▶  
Richard Cauchon  
Patricia & Richard A. Cautilli, Sr., MD '58,'63 ✓  
Anna & Nicholas C. Cavarocchi, MD, FACS ✪  
Amanpreet & Jugesh I. Cheema, MD '02  
Julie & Morgan Y. Chen, MD '87  
Judith & Francis A. Chervenak, MD '76  
Rebecca G. Chinn, MD '93  
Brenda & Paul H. Chodroff, MD '63,'68  
Lois & Sidney Cohen, MD ✪  
Herbert E. Cohn, MD '55,'62 ▶ ✓  
Diane & Daniel J. Cole, MD '84,'90  
Mary Ann & William R. Collini, MD '66  
Beverly H. Cooper  
Cindi & Glenn S. Cooper, MD '88 ✪  
Debra Somers Copit, MD '89 & Steven E. Copit, MD '88,'93 ▶ ✪  
Kristi Cornetta, PhD & Anthony J. Cornetta, MD '97,'02  
Madeline R. Corwin ▶ ✓  
Susan & Howard B. Cotler, MD '79,'84  
Eric J. Cozzitorto



## INDIVIDUAL GIVING

### \$1,000–\$2,499 CONTINUED

- ◆ Deceased
- ▶ Consecutive Giving 25+ Years
- ★ Current Faculty/Staff
- ✓ Parent
- ⊛ Trustee

Jason Cozzitorto  
 Joseph Cozzitorto ★  
 Gay & David W. Croft, MD '54  
 Ebba & Vincent D. Cuddy, MD '57,'62 ▶▶  
 Joseph P. Cunningham ★  
 Patricia M. Curtin, MD, FACP '88 & Thomas White ▶▶  
 Marie K. Cwik ✓  
 Nancy S. Czarnecki, MD '65 & Joseph Czarnecki, DO ✓  
 John Dagues  
 Barbara & Jonathan S. Daitch, MD '84 ✓  
 Susan O'Connor-Danella & John F. Danella, MD '86  
 Janey & Richard L. Davies, MD '68 ✓  
 Linda J. Davis-Moon, CRNP '81,'97 ★ & Jefferson Moon



Rose & Francis P. Day, MD '81  
 Maude De Schauensee  
 Lillian & Murray P. Dechter  
 Mary Ann & James M. Delaplaine, MD '64,'68  
 Michelle Pearlman & Andrew E. Denker, MD, PhD '97  
 Nevis & Peter DePaul

Rhoda & Jerome Dersh, MD '54  
 Judith & Richard H. Dilsheimer  
 Theresa M. Dougherty  
 Lynn & Jeffrey S. Driben, MD '91  
 Paul Drucker, MD '56  
 Kathleen C. Dudenhofer, MD '69 & Frederick J. Dudenhofer, MD '69 ✓  
 Donna & William F. Dunn, MD '80  
 Jackie Ebels  
 Loretta Edmondson, MD & G. Mitchell Edmondson, MD '81 ▶▶  
 Carol & Michael D. Ellis, MD '70 ✓  
 Kathleen & Dirk M. Elston, MD '82  
 Marianne Ruby, MD '79,'81 & Gary A. Emmett, MD '76,'79  
 Ruth D. Eni  
 Maxine E. Epstein ▶▶  
 Dorothy & Robert M. Epsten, Jr., MD '80  
 E. Arlene & Leonard A. Erdman, MD '50 ✓  
 Amy & Steven Erlbaum  
 Kelly Eschbach, MD '95  
 Edwin P. Ewing, Jr., MD '71 ▶▶  
 Kirsten & Joseph P. Falcone, MD, DO '98  
 Mary & George B. Faries, Jr., MD '67  
 Khem P. Fatimi ✓  
 Sharon Boggs & Robert E. Fay  
 Alan E. Feen, MD '68  
 Eugene Feiner ✓  
 Christine & Neil R. Feins, MD '60 ▶▶  
 Donna K. Ferrell  
 Maxine & Howard L. Field, MD '54,'60 ◆▶▶  
 Christina Barnabei-Figueroa & T. Ernesto Figueroa  
 Janet Fink ▶▶  
 Robert S. Finkelhor, MD '78  
 Walter J. Finnegan, MD, JD '69  
 Denise Flanagan  
 Kate Flynn

Norbatine & Lawrence Forrest  
 Ruth & Arthur F. Fost, MD '63 ✓  
 Mary L. Foy-Faila '50  
 Elaine Z. Francis, PhD '78 ★  
 Frances P. Freed, MD '66,'71 & Arnold Freed  
 Barbara & Allan P. Freedman, MD '70,'75  
 Joan & William A. Freeman, MD '64 ▶▶ ✓  
 Barbara G. Frieman, MD '80,'85 & Michael Nilon  
 Martha S. Funk ◆  
 Mary & Thomas J. Gal, MD '68 ▶▶ ✓  
 Henry Gelband, MD '62 ▶▶  
 Theresa ★ & Richard Getz  
 Mutek Gewecke, MD '83  
 Marjorie P. Gillespy, MD '80 & Thurman Gillespy, III, MD '80  
 Jill & Mark C. Gillespy, MD '86 ✓  
 Orfa & Joseph M. Giordano, MD '67  
 Heather & Alessandro A. Girolamo, Jr., MD '97  
 Sheila & Henry Gladstone  
 Susan J. Gleckner  
 Diana Keat & Edward A. Glickman  
 Sarita & Morris Gocial  
 Tiffany & Maurice L. Goins, MD '04  
 Margaret & Howard A. Goldberg  
 Susan & Sherwood Goldberg  
 A. Deborah Goldstein, MD, PhD & Joel B. Goldstein, MD '61  
 Gwen & Alan Goodman  
 Sandi-Jo & Mark W. Gordon, MD '67  
 Mary Jo & Robert A. Gordon, MD '73 ▶▶  
 Sharon & Robert M. Gorsen, MD, PhD '80,'82,'88  
 Diane & Patrick Gottschalk  
 Reena & Amit Goyal, MD '85  
 Albert Greenfield, DDS  
 Victoria Grella  
 Jean L. Grem, MD '80  
 Abha & Rakesh Gulati, MD '98 ★

Marianne & Bill Gustafson  
 Mahroo Haghbin, MD '84  
 Sarah & Jean A. Halpern, MD '77  
 S. M. & Ronald Hart  
 Susan E. Hart  
 Peter Haynicz, MD '62,'69  
 Diane & John Heilman  
 Dolores & J. Frederick Hiehle, MD '60 ▶▶  
 Sivan & Jeffrey Hines  
 B. Jean & Ronald H. Hirokawa, MD '71 ✓  
 Lynda & William Hitschler  
 Jean & Joseph Holman  
 Doris L. '62 & Bruce D. Hopper, MD '65,'81 ▶▶ ✓  
 Laura Houk, MD '09  
 Rose Mary & Michael R. Hoy  
 Sylvia Hsu-Wong, MD '94 & Tien Pei Wong, MD  
 Robert H. Huxster, MD '78,'83,'84  
 Marvin E. Jaffe, MD '60,'67 ▶▶ ✓  
 Sue & Eric W. Jahnke, MD '78  
 Denise A. DiPrimio-Kalman, DO '90,'92  
 & Victor R. Kalman, DO '94  
 Jacob D. Kanofsky, MD '74  
 Karen & Jonathan S. Kaplan, MD '69  
 Jane A. Karatzas  
 Linda Katz  
 Francine & Steven Katz  
 Nola & Michael Keenan  
 George L. Kelley  
 Barbara W. '58 & Thomas Kelso, MD '60  
 Beth & Bruce J. Keyser, MD '86  
 Larry Kiely  
 Leslie Killion, MD '93 & Matthew J. Killion, MD  
 '93,'97 ✪  
 Marcia & Morton Kimmel, Esq.  
 Natalie & Charles L. Knecht, III, MD '57 ▶▶  
 M. Blair & C. Warren Koehl, Jr., MD '56  
 Marianne F. Koller  
 Linda J. '71 & Joseph J. Korey, Jr., MD '75

Nina B. Korsh, PhD & James F. Korsh  
 Carole & Richard C. Kovach, MD '82,'87  
 Nancy & Robert A. Krall, MD '76,'80 ▶▶  
 Andrea Kremer  
 Leisa E. Krespan '81 & Charles B. Krespan, MD '82  
 Kelly Kroll & Richard Brown  
 Kenneth M. Kron, MD '52,'69  
 Christina & William E. Kropp, MD '87  
 Barbara & Alfred B. Kurtz, MD '78 ▶▶ ✪  
 Luisa E. Lehrer, MD '86 & Ernest Post  
 Beth & Charles F. Leinberry, Jr., MD '84,'89,'90 ✪  
 Joye & Bruce Lesser  
 Paul Lester  
 Janet B. Leventhal, MD '79 & David White  
 Isobel Leventhal ▶▶ ✓  
 David A. Levitsky, MD '51  
 Sharon & Kenneth A. Levitsky, MD '93  
 Cheryl & Glen Lewy  
 Katherine Myers & Gary A. Lindenbaum, MD ✪  
 Margaret & William A. Lista, MD '55 ▶▶  
 Ellen A. Liu, MD '87,'90 & Sheldon Furst ▶▶  
 Lucy & Thomas V. Lloyd, III, MD '66 ▶▶ ✓  
 Jane M. Longacre, MD '80 & Stephen L.  
 Longacre, PhD '80 ▶▶  
 Ira M. Lubert  
 Kathleen & Vincent I. MacAndrew, Jr., MD '84,'89  
 Linda & William S. Mainker, MD '63  
 Anita ✪ & Joseph F. Majdan, MD, FACP '81 ✪  
 Warren R. Maley, MD ✪  
 Margaret & William J. Markmann, MD '79 ✓  
 Meredith & John H. Marks, MD '89,'94,'95  
 Maria & Jose Martinez, MD '69  
 Bernard W. Mayer, MD '51  
 Charles Mayr  
 Regina & Robert G. McCairns, Jr., MD '76,'81 ▶▶ ✪  
 Carolyn & Don McCollough  
 Carolyn & A. Donald McCulloch, Jr.

Jeffery P. McFadden  
 Mary Ann McGinley, PhD ✪ & Edward J. McGinley  
 Joanne & Francis McIlhenny  
 Peter Z. McIntyre, MD '08  
 Mary & Robert M. McNamara, MD '82  
 Catherine & Ronald McQueen  
 Angel D. Medina ✪  
 Jane Stone, MD & Bruce P. Meinhard, MD '74



AnnaMae Meyer  
 Robin & Robert I. Michaelson, MD '76  
 Anna & Christopher M. Mikson, MD '05  
 Eugenia M. Miller, MD '73 & Stephen Parker  
 Martha & Donald L. Minter, MD '54 ▶▶  
 Alisa B. Modena, MD '03,'06 & Scott Modena  
 Melody & Thomas G. Morales, MD '89  
 Gino Mori, MD '58 ▶▶  
 Kathryn E. Morris, MD '81,'85 & Edward Steinman,  
 MD  
 Jeffrey A. Morrison, MD '96  
 Patricia & John C. Mueller, MD '70,'71  
 Keith F. Mulrooney  
 Suzette J. Song, MD '93,'98 & Kevin R. Muzzio,  
 MD '91,'95  
 Judy & Jay A. Nadel, MD '53

## INDIVIDUAL GIVING

◆ Deceased

▶ Consecutive Giving  
25+ Years

★ Current Faculty/Staff

✓ Parent

⊛ Trustee

### \$1,000–\$2,499 CONTINUED

Karen & Anthony F. Naples, MD, PhD '77

Anne & Robert J. Neviasher, MD '62 ▶

Paul M. Newell, MD '81

Judith & Bernard Newman

Cynthia & John Niciecki

JoAnn V. Novak Buller

Linda & Philip H. O'Donnell, MD '88

Roseann & Robert Opdyke

Sandra & Terence L. O'Rourke, MD '60 ✓

Rebecca O'Shea ★

Harvey W. Oshrin, MD '60 ▶

Ann & John Padova

Marta & Richard T. Padula, MD '61,'66

Wesley Palmer

Meredith K. Pang, MD '69 ▶



James G. Paraskevas, MD '84

Betsy & Marc R. Peck, MD '68 ✓

Tracie & Brian T. Pelczar, MD '88 ▶

Gary E. Penner, MD '95

Alfred T. Pepino, MD '62

April L. Pettinelli

Barbara & Peter D. Pizzutillo, MD '70,'75,'90

Mark Pliskin, MD '62,'69 ▶

Stephanie E. Poellnitz, MD '73 & Fred Poellnitz, Jr.

Mary Kaye & William J. Polacheck, Jr., MD '80,'85

Amelia Pometti

Leslie & Cory Porter

Arlene & George Poulos

Andrew H. Previti ◆

Frank Previti, MD

Maureen Previti

Ann Bennett & David B. Probert, MD '58

Frances Plimpton Pugh & V. Watson Pugh, MD '53,'56 ✓

Michael A. Puniak, MD '95,'99

Barbara & Paul A. Pupi, MD '66,'71

Marie Pusinelli

Mary & Charles E. Quaglieri, MD '70

Carla J. Reid '87 & Christopher J. Reid, MD '89

Barbara & John W. Rhee, MD '84

Victoria & Michael Rivero ★

Reina & Saul Robbins

Colleen & James Robinson ★

Cynthia B. Robinson, MD '82 & David M. Robinson, II, MD '80

Jane & Morton J. Robinson, MD '57

Joanne M. Robinson '81 & James W. Robinson, MD '82

David Robison

Rita Rome

Lewis J. Rose, MD '81 ★

Lionel W. Rosen, MD '65 ▶ ✓

Jean & Robert A. Rosenbaum, MD '94

Paul D. Rosenberg ◆

George Rosenthal, MD '68

Laura Rossi

Carolyn & Marc J. Rowan

Ruth L. Ruccius '48

John P. Rudolph, MD '39

Deborah S. Russo

Ruth & Marvin A. Sackner, MD '57 ✓

Susan & Harry J. Sacks, MD '89

Marsha R. Sadorf

Nancy & Gerald Salen, MD '61,'64,'66

Dianne P. Salter

Elaine & Ronald Sandmeyer

Lois M. Sastic, MD '79 & Jonathan W. Sastic, MD '79

Kathleen & Donald J. Savage, MD '77 ✓

Kimberly & Mark E. Schadt, MD '85

Elmer Schettler

Cecelia E. Schmalbach, MD '98

Dafna & Michael J. Schmerin, MD '73

Hope & Paul C. Schroy, III, MD '81

Rebecca & Brian L. Schwam, MD '90

Esta & Elias Schwartz, MD

Linda & Louis W. Schwartz, MD '67 ✓

Rosalind Schwartz

Margaret & Peter Seaborg

Veronika Ilyes-Sechler & James L. Sechler, MD '80

Alice & Darryl M. Sexton, MD '75

Roberta & Ronald Shaffer

Fredericka Foster & Bennett M. Shapiro, MD '64

Gregory Shea, PhD

Farah & Craig H. Sherman, MD '82

Donna & David Shooster

Elissa & David Silverstone

Judith & Morton H. Simkins

David C. Slagle, MD '81 & Harry Gunn ▶

Nan & Joseph H. Sloss, MD '52

Nancy & James R. Smith

Sidney V. Smith, Jr.

SaraKay Smullens, PhD & Stanton N. Smullens, MD '61,'69

Jean & Stephen R. Sobie, MD '82

Richard L. Solit, MD '93,'98

Frederick S. Song, MD '03

Ann & Harold Sorgenti

Susan L. '97 🌟 & Ronald L. Souder, MD '73 ✓  
 Marie V. Spagnoli, MD '80 & Henry L. Maxwell, Jr., MD '80  
 Dinorah Gutierrez & James H. Spigel, MD '80 ➡  
 Merle & Thomas H. Sprague, MD '75  
 Rossie & H. Frank Starr, Jr., MD '48  
 Mary E. Stawicki '75  
 Michael Stevens ✦  
 Carol & Bruce L. Stevens, MD '68  
 Douglas F. Stickle, PhD 🌟  
 John J. Studzinski  
 Carla & Mark W. Stull, MD '82  
 Monica Suliman  
 Stanford N. Sullum, MD '73  
 Sara & John M. Sundheim, MD '73,'76  
 Siva & Nagalingam Suntharalingam, PhD ✓  
 Jeanette & Mark Suprenant  
 Ellen & John Suria  
 Dena & Stephen A. Szawlewicz, MD '70 ✓  
 Barbara & Damian Szewczyk, MD '01 ✓  
 Rajiv V. Taliwal, MD '00  
 Richard E. Tapp  
 Joyce Vincelette & Vincent Tarduogno  
 Elizabeth & Daniel J. Thomas, MD '63  
 Zondra & David Thompson  
 Elizabeth & James J. Thornton, MD '69,'72  
 Julie E. Timins, MD '71 & William Lupatkin, MD ➡  
 Marianne E. Trabulsi  
 Richard Trama  
 Diana Lee & Raymond G. Tronzo, MD '57  
 Judith & David H. Trump, MD, MPH '78  
 Anne & Theodore N. Tsangaris, MD 🌟  
 Elizabeth & Leslie Tupchong, MD, PhD '84  
 Agnes A. Turley  
 Aydin Ulkucu  
 Jane & John C. Vance, Jr., MD '59  
 Rachel B. Wagman, MD '97 '00

Yael & Ilan Waldman, MD '08  
 Diane & Andrew B. Walker, MD '69  
 Regina & Timothy P. Walsh, MD '83 ➡ ✓  
 Alan H. Wang, MD '05  
 Mary & John Waszena  
 Sarah E. Kohl, MD '86 & Stephen F. Wawrose, MD '86  
 Sarah & Lehn K. Weaver  
 Malcolm S. Weiss, MD '68 ➡  
 Jennifer & Jonathan M. Wenk, MD '95  
 Abby M. Wenzel  
 Jo & Richard P. Wenzel, MD, MSC '65  
 Diane & Thomas R. Westphal, MD, MBA '81,'87  
 Francis D. Wetherill  
 Walther T. Weylman, MD '54  
 Kathleen & Thomas M. Williams, MD '79  
 Robin & Gerald R. Williams, Jr., MD 🌟  
 David E. Williams, MD '67  
 Patricia J. Williams, MD '93  
 Terry & M. Russell Willoughby  
 Sarah Wilson  
 Christina Tortora-Witherell & Peter M. Witherell, MD '91  
 Colleen Witherell, MD '94 & John C. Witherell, MD '94  
 Carolyn & Glenn Wolfe  
 Richard A. Wolitz, MD '77  
 Nancy L. Wong, MD '71 & Robert J. Lipshutz  
 Melinda & Randolph W. Wong, MD '88  
 W. J. Wood, MD '03  
 Toby & Robert J. Woodhouse, MD '77  
 Clara & Gerald Wright  
 June & Edward A. Wroblewski, MD '68 ✓  
 Christine Wu, MD '91 🌟 & Thomas Connell, MD  
 Sophia C. Young, MD '81,'85 & Eugene Young  
 George Zallie, Jr.  
 James G. Zangrilli, Jr., MD '88,'91,'95

Bonnie M. Zehr, MD '94  
 Mary & Norman P. Zemel, MD '65  
 Suzanne S. Zeok, MD '69 & John V. Zeok, MD '67  
 Mark A. Ziemba, MD  
 Michael J. Zinner



## INDIVIDUAL GIVING

◆ Deceased

▶ Consecutive Giving  
25+ Years

★ Current Faculty/Staff

✓ Parent

⊛ Trustee

### \$500–\$999

Beth & Nicholas A. Abidi, MD '96  
 Thomas A. Abrams, MD '00  
 Kevin Agnew  
 Carol & Richard Albright  
 Diana & Robert Allerot  
 Frank P. Amore  
 Sylvia & William T. Anderson, MD '61  
 Dorothy A. Andriole, MD & Gerald L. Andriole, Jr., MD '78  
 Phyllis & William A. Anthony, Jr., MD '55  
 Pamela & Powell W. Arms, III  
 William C. Atkins  
 Deborah & Robert E. Atkinson, MD '77  
 Sheryl L. Auerbach Richter  
 Kathleen & Joseph E. August, MD '92



Stephanie & Matthew S. Austin, MD '03,'04  
 Joseph D. Avellino, MD '61  
 Raymond P. Ayres, Jr.  
 Marie & John P. Azzara  
 Kim & Steven C. Bade, MD '89  
 Judith & Dominick J. Baffone, Jr.  
 Ann & J. Mark Baiada

Frances & Frank S. Bakewell, Jr., MD '52 ✓  
 Lydia & Louis B. Balizet, MD '69  
 Margaret M. Yungbluth, MD & David A. Balling, MD '67  
 Frederic Becker  
 Alyssa S. Becker, MD '95,'98,'00 & George L. Becker, III, MD '94,'97  
 Kathleen Begley  
 Theresa Q. Bell, MD '93 & Jonathan Bell  
 Janet & Dennis Bennett  
 Sara & Bruce C. Berger, MD '74 ▶  
 Janet & Wayne Berman  
 Cary Berman  
 Edwina & Emmanuel C. Besa, MD  
 Helen M. '54 & Joseph A. Besecker, MD '59  
 Sharon & William A. Biermann, MD '75,'78  
 Deidre M. '67 & Michael S. Blank, PhD '76 ★  
 Alice & John D. Blannett, Jr., MD '76  
 Sally C. Bleznak  
 Jennifer Blitz  
 Beth & Albert L. Blumberg, MD '74  
 Ellen & F. Peter Boer  
 Jordana & David Bogart  
 Maurits S. Boon, MD '00 ★  
 Harry Boretsky, MD '51 ▶ ✓  
 Kathleen & Gregory Bosch  
 William D. Boswell, Jr., MD '72 ✓  
 E. A. & Thomas Bowersox  
 Nancy H. Boyle  
 Kathleen & Preston Bradford  
 Ruth & Robert Bramson  
 Marjorie & Stanley N. Brand, MD '69  
 David A. Brandt, MD '98  
 Mary & Lawrence P. Bressler, MD '80  
 Margaret & Robert Brickman  
 Bettie A. & Timothy P. Brigham, PhD

Megan & Kenneth J. Brislin, MD '03  
 Andrea & Louis T. Broad, MD '74,'77 ★  
 Jeanne & David C. Brock, MD '76  
 Beverly H. Brown  
 Carley & James D. Brubaker, MD '60  
 Sarah & G. Lawrence Buhl  
 James F. Bujak  
 Janet Burnham  
 Barbara T. Butler  
 Richard P. Buyalos, Jr. MD '83  
 Rudolph C. Camishion, MD '54,'59 ▶ ✓  
 Taylor Campitelli  
 Kathleen E. Squires, MD ★ & Matthew H. Carabasi, MD '80 ★  
 Eileen M. '67 & Peter M. Caravello, Sr., MD '71  
 Theresa & James S. Carey  
 Stephanie & R.R.M. Carpenter  
 Michael Carson  
 Alan E. Casnoff  
 Kimberly & John V. Cattie, MD '74,'79  
 Kathleen & Louis J. Centrella, MD '66 ▶  
 Joyce & Richard S. Chalfant, MD '73,'77  
 Martin Chalupa  
 Nelly & Scott Childress  
 Carol & Franklin J. Chinn, Jr., MD '82  
 Claudia & Theodore A. Christopher, MD '86 ★  
 Lynn & Sabatino Ciatti, MD '97  
 Dennis J. Cogan, Esq.  
 Andrew J. Cogbill  
 David M. Cognetti, MD '07 ★  
 Hope Cohen  
 Marjorie J. Cohen  
 Sherry & John R. Cohn, MD '76,'79 ★  
 Jacqueline & Thomas Colligan  
 Sean T. Collins  
 Kevin J. Condon  
 Elaine & Jerome I. Cook, MD '54,'59 ✓



Lindsay & Richard A. Cook, II, MD '05  
 Jennifer & Robert Cordivari  
 Joseph M. Corson, MD '47 ✓  
 Lucy & Douglas T. Corwin, Jr., MD, PhD '93  
 Bonnie & Joel I. Cossrow, MD '72,'76  
 Susan L. Groff & Victor J. Costa  
 Cynthia M. Coughlin-Hanna, MD '85 &  
 George Hanna  
 H. Jay Cozzolino, MD '58,'63  
 Laura & Kevin M. Cregan, MD '97  
 Gilbert Crews  
 Nadine & Albert D'Amato  
 Surma & Kaushik Daphtary  
 Cheryl & Stacey Darden  
 Indranil Dasgupta, MD ✨  
 Valri & Robert Davidson, MD '71  
 Rebecca & John B. Davies, MD '56  
 Jane & Lewis S. DeGirolamo, Sr.  
 Kathleen & Raphael J. DeHoratius, MD '68 ✓  
 D. Kay Strickland & Thomas J. Delehanty, MD '77  
 Lisa Ann & Caesar A. DeLeo, III, MD '87  
 Doris & James R. Delp, MD '59  
 Alice R. Dick, MD '90  
 Michael R. Dobridge, Jr., MD '51  
 Eileen & Basil Dolphin, MD '84  
 Janet L. Wilson, MD & James H. Dovnarsky, MD '70  
 Monica ✨ & David Doyle  
 Barbara & Albert Dragon  
 Catherine & Lewis C. Druffner, Jr., MD '59 ▶▶  
 Nicole Dubbs & Matt Nathanson  
 Diane & Peter R. Duca, MD '72,'96 ✓  
 Lisa & Joseph S. Ducaji, Jr., MD '94  
 Bonnie & Gary Dukart, MD '80 ▶▶  
 Micheline & Jacques Dumont, MD '72  
 Ilona & Joseph Y. Dvoskin, MD '65  
 Hui Chen & Matthew T. Ebling, MD '99,'03  
 Irene & Bernard Eizen, Esq.

Kelly & Scott J. Engel, MD '02  
 Mary M. Pomidor, MD, PhD '97,'00 & David J.  
 Eschelmann, MD '86,'93 ✨  
 Lois & David S. Estock, MD '82  
 Claudia & Richard C. Evans, MD '84  
 Michael D. Fabrizio, MD '98  
 Elizabeth O. Fagan, MD '01 & Kevin Fagan  
 Julie A. Fairman, PhD & Ronald M. Fairman, MD '77  
 Rebecca Fan  
 Michelle F. Fantaski '88 & Mark R. Fantaski, MD '90  
 Judy & Harold F. Farber, MD '87  
 Colleen & Robert R. Farquharson, MD '76  
 Alexandra & Jay N. Fastow  
 Randi & Rick I. Feld, MD '88 ✨  
 Deborah & Brad Feldstein, MD '81  
 Suellen & Victor A. Ferraris, MD '77  
 Elizabeth & H. Robert Fiebach  
 Paul I. File, MD '94  
 Vicki & Allen B. Filstein, MD '74  
 Debra & Allen Fineberg  
 Sandra First  
 Catherine R. '56 & Irwin R. Fisch, MD '56,'62 ✓  
 James E. Fish, MD  
 Rita M. Fisher  
 Patricia G. Fitzpatrick, MD '78 & Michael A. Niles, MD  
 Lois Fortuna  
 Ellen & Timothy Foster  
 Ronna & Stanley C. Foster, MD '64 ▶▶  
 Tracy & Robert Fowler  
 Teresa & Robert Franciose  
 Lori B. Frank, MD '98 '01 ✨ & Adam Frank, MD ✨  
 Ruth Frank, MD '09 & Stephen Guy  
 Barbara Freedman  
 Rita & George R. Freeland, MD '71 ▶▶  
 Renee & Don Freeman  
 Linda & Robert M. Friedlander, MD '67  
 Ann W. '63 & Robert L. Fronduti, MD '66 ▶▶

Wendy W. Fuzesi, MD '86 & Laszlo Fuzesi, MD '87  
 Lois & Brian J. Galinat, MD '88  
 Gary Gansky  
 Juan C. Garcia, MD '91  
 Diane & Robert Gardula  
 Deborah & Donald Gaskill  
 Marlene & Robert Gautsch  
 Rebecca & Linford K. Gehman, MD '63  
 Grace & Peter A. Gehret, MD '69  
 Bernadette Genz-Remshard, MD '79  
 Sylvia & Hilliard C. Gersten, MD '56 ✓  
 Jody P. Ghosh, MD '89,'92 & Arun Ghosh  
 Lori Ann & Jeffrey Giardina ✨  
 Jane Y. Ikeda, MD & Steven P. Gohsler, MD '86  
 Phyllis & Barry B. Goldberg, MD ▶▶  
 Carin F. Gonsalves, MD '98,'99 ✨



Valerie & Kelby Good  
 Carol & Bruce J. Gould, MD '83  
 Carol & John H. Gould, MD '61 ✓  
 Ken Greenberg  
 Michael H. Greenhawt, MD '73  
 Kim Grobeck  
 Carl W. Groppe, Jr., MD '64,'65

## INDIVIDUAL GIVING

### \$500–\$999 CONTINUED

Annie & Richard Hamilton, MD '62 ▶ ✓  
 Jeannette Hammell  
 Sarita & Louis Hammerman, MD '78  
 Hie-Won Y. Hann, MD ✪ & Richard S. Hann ✓  
 Judith & J. Howard Hannemann, MD '60  
 Christopher L. Hansen, MD ✪  
 Emily Hardy  
 Nicole Hardy  
 Paige & James Harris  
 Sarah Harris-Cash, MD '05 & David M. Cash  
 Theresa Hart  
 Craig T. Haytmanek, MD '72 ✓  
 Judith & Kenneth P. Heaps, MD '66  
 Amy & Mark H. Henderson, Jr., MD '90  
 Patricia & Stephen J. Herceg, MD, FACS '57 ▶

◆ Deceased

▶ Consecutive Giving  
25+ Years

✪ Current Faculty/Staff

✓ Parent

✪ Trustee



Christine M. Herdman, MD '04  
 Christine C. Heyt, MD '01 & Gregory J. Heyt, MD '99,'02  
 David Hines  
 Nancy & John Hines  
 E. Jane Hix, Esq. ✪  
 Grace & Philip Hoerter

Halina Bruckner, MD & Philip C. Hoffman, MD '72  
 Karen M. Hofmann, MD & Kurt P. Hofmann, MD '86  
 Meaghan Hogan  
 Kathryn & Thomas M. Holder, MD '59  
 Anita M. Holloway, MD '86  
 Marjorie & Jeffrey Honickman  
 Geraldine & John B. Humphrey, Jr., MD '68 ▶  
 Janet P. Huplits '78 & W. Neil Huplits  
 Douglas T. Hutchinson, MD '84,'89  
 Eugene G. Imperato  
 Shirley Inman  
 Maria & Nicholas A. Inverso, MD '90,'93  
 Martha & Eric C. Jaxheimer, MD '77  
 Patsy & Cecil G. Jenkins, MD '55 ▶  
 Christine M. Jerpbak, MD ✪ & Mark P. Johnson, MD  
 Zhen Poon & Shan Jin, PhD '89  
 Sondra Johansen  
 Mary E. Johnson  
 Dorothy H. Johnston-Banzy  
 Kimberly Jones  
 Mary E. Jones  
 Susan & David G. Jones, MD '65 ▶ ✓  
 Edward R. Joshua, III  
 Joan P. Kahn  
 Carol & Bruce Kauffman  
 John S. Kauh, MD '97  
 Marilyn & Jeffrey Kellmer  
 Janice & John J. Kelly, III, MD '84  
 Janice & Raymond Kemmerer  
 Dawn & Nicholas B. Kemp, Jr.  
 Rita & Jay A. Kern, MD '58,'61,'62  
 Vivianne M. '82 & James J. Kerrigan, MD '84,'89  
 Adrienne E. Kertzer  
 Shirley & Lawrence J. Kessel, MD  
 Michelle & Charles King  
 Paul Kirch

Emil P. Kiss, Jr.  
 Nancy & Jeffrey Klapper  
 Amanda & Paul F. Kleidermacher, MD '92  
 Mildred C. '55 & Ben Kline, MD '55 ▶ ✓  
 John Kling  
 Fran & Lewis J. Klunk, Jr., PhD, '76 ✓  
 Linda & Thomas Knox  
 Evelyn & H. Donald Knox, MD '57  
 Anna Kornbrot, DMD  
 Robyn L. '81 & Neil R. Kramer, MD '85  
 Joan & H. Dale Kreider, MD '63  
 Natalie P. Krieger ▶  
 Jazmin & David J. Kron  
 Nancie & William J. Krywicki, MD '77  
 Emily & William Kuhn  
 Marie & Robert Kulikowski  
 Algund & Julio L. Kuperman, MD '71  
 Gail & Herman Kurz  
 Nickey Laino  
 Muriel & W. Clark Lambert, MD, PhD '69,'70  
 Janice & Warren D. Lambright, MD '66,'74  
 Judy & Scott I. Lampert, MD '74,'79  
 Mary & Gordon M. Langston, MD '81  
 Martha P. Lebram  
 Richard H. Legro  
 Sharon S. Lehman, MD '85 & Thomas P. Lehman, MD '80,'86  
 Laurie & A. James Leida  
 Laura & Mark Lenet  
 Susan & Harvey M. Levin, MD '60  
 Hector L. Ley-Han, MD '93  
 Susan & Paul Lichtman  
 Kwok S. Ling  
 Michele & Leslie Littman  
 Randal J. Liu, MD '87,'90,'93  
 William J. Lloyd, Jr.  
 Danny Lombardo

Peggy & Paul R. Long, MD '76  
 Suzanne S. Long, MD '02,'09 ✪  
 Corinne Luttmann  
 Carol D. Luzzi, MD '85 & Bruce A. Jones  
 Celeste & Peter Madden  
 Denise & James W. Mahoney, MD '72  
 Rebecca E. Mancoll, MD '01  
 Leanne A. Mann  
 Donald J. Mann  
 Marilyn & Jeffrey Marchant  
 Elizabeth Marczak  
 Watson S. Marczak  
 A. Richard Marks  
 Gerald J. Marks, MD '49,'57 ✓  
 Jaime R. Marks  
 Leona E. Markson, Sc.D.  
 Deborah & David B. Marmor, MD '03,'06  
 Doris & Robert J. Maro, Sr., MD '56 ▶▶ ✓  
 Kathleen & Thomas J. Marshall, Jr., MD '79  
 Lynne & Burton Mass, MD '66 ▶▶ ✓  
 D. Edward McAllister  
 William D. McCann, MD '61 ▶▶  
 Christine Sachs McCann '72 & James P. McCann,  
 MD '76  
 Edward McDaid  
 Carter & Charles L. McDowell, MD '59 ▶▶  
 Elizabeth A. McGuire, MD '80  
 Rohit Mehrotra  
 Roberta & Kirk J. Meloney  
 Ellen B. Meltzer, MD '04 & Andrew J. Meltzer, MD  
 '03  
 Debra & Robert D. Meringolo, MD '69 ▶▶  
 Marilyn Messer  
 Judy & James Mezzanotte  
 Debra & Fredrick Milburn  
 Donna & Lawrence S. Miller, MD '79,'84,'89  
 Mendelle & Martin Milston

Viola J. Monaghan, MD '95 & Gerry Monaghan  
 Kathryn & John S. Monk, Jr., MD '82  
 Joseph M. Montella, MD '84,'88,'14 ✪  
 Bob Moran  
 Susan H. Morrow  
 Todd A. Morrow, MD '86  
 Shira & Ron L. Moses, MD '98  
 June Moss & Thoman Dillon  
 Ruth Moss  
 Diane & Steven H. Moss, MD '72  
 Sandra S. Mossbrook, MD '72 & Steven  
 Mossbrook  
 Michelle & Andrew J. Mustin, MD '88  
 Kenneth A. Neifeld, MD '78  
 Marianne & John B. Nelson, III, MD '54 ▶▶  
 Jocelyn & Amen Ness, MD '06,'07  
 Heather A. Nesti, MD '99 & Leon J. Nesti, MD,  
 PhD '02  
 Laura Newlin '98 & Matthew E. Newlin, MD '98  
 George Nichols, III  
 G. Stephens Nicoll, MD '62,'68  
 Kristin Nocco  
 Lou Nolan  
 Dawn & Gary Novak  
 Carmella & Thomas E. Nowakowski  
 Elizabeth & James N. Nutt, III, MD '70 ▶▶  
 Judith & Maurice Oaks  
 John C. Oberholtzer, MD, PhD '84  
 Janet L. O'Brien '62 & Robert O'Brien  
 Gregory Odhner  
 Gail & Michael J. O'Donnell, MD '86  
 Donna & Michael Pacifico  
 Thomas N. Pappas  
 Andrew Patsiner  
 John R. Patterson, MD '54,'61 ▶▶  
 Kathleen & Russell Patton  
 Rita M. Pechulis, MD '02 & Michael Pechulis

Barbara & Michael D. Perilstein, MD '75 ▶▶ ✓  
 Genevieve Perloff  
 Paulette & Robert H. Peters, III, MD '78  
 Jon W. Peterson  
 Michaela Petrone '97 ✪ & Anthony J. Petrone, Esq.  
 Barbara Piccoli  
 Christopher Piccoli, Sr.  
 Gina & Michael Picone  
 Lisa A. Plowfield, PhD '86 & John A. Harrelson, Esq.  
 Douglas Poetzsch  
 Paula & I. Stanley Porter, MD '76  
 Bernie Prazenica  
 Dominick A. Pulieri  
 Kelly & Chad R. Punched  
 Laurel P. Purdue  
 Mitchell Rabil



Laura & Ronald Ramler  
 Maunak V. Rana, MD '97  
 Helen Rankin  
 Vicki H. Rapaport, MD '98,'02 & Matthew A.  
 Torrington, MD '98  
 Suzanne & Robert J. Rapoport, MD '93,'95  
 Susan D. Ravenscroft

## INDIVIDUAL GIVING

### \$500–\$999 CONTINUED

- ◆ Deceased
- ▶ Consecutive Giving  
25+ Years
- ★ Current Faculty/Staff
- ✓ Parent
- ⊛ Trustee

Karen A. Ravin, MD '98,'01 & Joseph Duscher  
 Stasia & Joseph P. Ravin, MD '56 ▶ ✓  
 Margaret & James W. Redka, MD '72  
 Linda L. '69 & John Reichel, III, MD '70 ▶  
 Anne F. Reilly, MD '87 & Patrick M. Reilly, MD '87  
 Janet C. Respass '65 & James Respass  
 Stuart E. Rickerson  
 L. G. Rigby  
 Alan K. Roberts, MD '74 ▶  
 Carole & Howard S. Robin, MD '71,'76  
 Timothy A. Rodgers  
 Janice & Paul M. Roediger, MD, FACP '58  
 Katherine H. Rogers  
 Roger Rohrbough ◆



Jennifer & Vincent J. Rollo, MD '89,'94  
 Barbara & Anthony R. Rooklin, MD '72,'77  
 Jill & Norman G. Rosenblum, MD, PhD '75,'78 ▶ ★  
 Leonard M. Rosenfeld, PhD '64  
 Monica J. Cates & Gregory J. Rosko  
 Laura & David S. Ross  
 Kimberly & Scott T. Rouleau

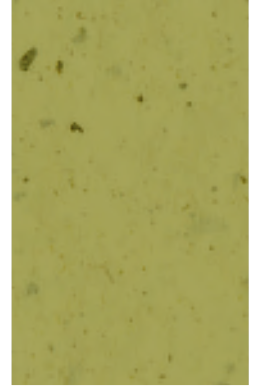
Michelle & Edward B. Ruby, MD '71 ★  
 Pearl & Frederick E. Ruccius, III  
 Carolyn D. Runowicz, MD '77 & Sheldon Cherry, MD  
 Phyllis & Joseph J. Ruzbarsky, MD '77 ✓  
 Sharon & John T. Sack, MD '66  
 Brian Sagrestano  
 Genevieve & Edward M. Salisbury, MD '54  
 Sandra & Kent A. Sallee, MD '76 ▶  
 Joan & Edward J. Saltzman, MD '49  
 Karen J. Lefrak Salvin, MD '02 & Jonathan H.  
 Salvin, MD '00  
 Rita & Vincent Sansone  
 Kathleen & Michael P. Savage, MD '80,'86 ★  
 James D. Scanlon  
 Doris & Burton Schaffer, MD '55  
 Caren & Alan L. Schein, MD '69,'73  
 Pat R. Schields  
 Sandra F. Schnell, MD '79,'82 & Gary Newman, MD  
 Joan Schnettler  
 Cheryl M. Schrier '79 & Thomas Schrier  
 Allyson & David S. Schwartz, MD '73 ✓  
 Gerald S. Segal  
 Nancy Seidel  
 Paul J. Seikel  
 Tracy & Neil S. Seligman, MD '11  
 Sheela Dattani & Suken A. Shah, MD '94,'99  
 Kay & Donald E. Shearer, MD '63  
 Kent D. Shinbach, MD '63  
 Rhea & R. Michael Siatkowski, MD '87 ▶  
 Hillary B. Siebeneck, MD '98 & Aaron J.  
 Siebeneck  
 Randa D. Sifri, MD '93 ★ & Michael E. O'Leary,  
 MD, PhD  
 Julia & John M. Skibber, MD '81  
 Keri Skrapits  
 Rose K. Slizewski, MD '70  
 Ruth & Alan Smith

Cathleen & Michael C. Snyder, MD '66 ▶  
 Janet & Kevin Soder  
 Michael C. Sokol, MD '93  
 Lysie & Evan Solomon  
 Meryl & Van A. Sommer  
 Lisa Speicher, PhD '89  
 Janet & Michael R. Sperling, MD ★  
 Robert D. St. George  
 Marylou & Richard O. Stader, MD '53  
 Rita & Elliott M. Stein, MD '64  
 Scott C. Stein, MD '67  
 Liesa & Stanford M. Steinberg, MD '62,'68  
 Brian Stello, MD '88  
 David Stewart  
 Amilu S. Stewart, MD '65 ✓  
 Brendt A. Stier, PhD '02  
 Lois & Robert H. Stine, MD '60  
 Dorothy Stringer  
 Alison & Keith T. Stroup ★  
 Elissa & David K. Subin, MD '61,'66  
 Dae Hun Suh, MD '02  
 William Sullivan  
 Ruth & Richard A. Szucs, MD '82  
 Susan & Thaddeus R. Szydlowski, MD '72 ▶ ✓  
 Toby Tally, MD & William C. Tally, MD '06  
 Pamela & Christopher Teufel  
 Marie & Charles D. Thomas, MD '57  
 Karin E. Thomas, MD '96  
 Gayla & Craig Timm  
 Shaheen J. Timmapuri, MD '06  
 Barbara & Robert G. Timmons, MD '66  
 Adrienne & Darryl B. Tisherman, MD '64  
 Linda & Edward Tober, MD '54 ▶  
 James Tobin  
 Lisa & Richard W. Tobin, Jr., MD '84  
 Marilyn & Edward Trainer

Mary & Henry S. Trostle, MD '52  
Jae Shim & Toshimasa Tsuda, MD '93  
Rhea & Richard L. Uhl, MD '84,'90  
Beverley & Brian M. Uniacke, MD '82  
Jean & Rayburn D. Vancil  
Thornton A. Vandersall, MD '54 ▶▶  
Mary Ann Venezia, MD '85 & Michael Buxbaum,  
MD '84  
Fay & Dragomir M. Vujic, MD '87  
Richard L. Wade  
Lois & Peter Wadewitz, MD '60 ▶▶  
Kelly & Michael J. Walker, MD '88,'93  
Margaret B. Wallis  
Mary & Casimir J. Wanczyk, MD '59 ▶▶  
Margaret & Charles L. Wasilewski, Jr., MD '63 ▶▶  
Esther L. Webb '57  
June & John P. Welch, MD '81 ✓  
Geraldine & William West  
Lori & E. J. Whelan  
Aileen & Richard T. Widerman  
Donna & William Widerman  
Katherine & Robert Widerman  
Jo Ann & John E. Widger, MD '80,'85  
Carla & Peter Williams  
Maggie & David A. Williams, MD '88  
Beverly & Jason G. Wilmoth, MD '96  
Deanna & John F. Wilson, MD '87  
Carolyn & John C. Wirth, Jr., MD '69  
Thomas A. Wixted, MD '02  
E.E. Drusedum & John J. Wojciechowski  
Elaine & Melvyn A. Wolf, MD '67  
Colleen & Kenneth Wortley  
Deloris R. Wright  
Mary C. Yankaskas, MD '90 & Jasper Rizzo, DO  
Barbara & John A. Yauch, MD '67  
Suzanne & W. Scott Yoder

Thomas Youngdahl  
Phyllis & Robert Zadra  
Heather & Robert Zavod, MD '63 ▶▶ ✓  
Lin Chen & Jianke Zhang, PhD ✚  
Iris & John Zook  
Anne & Marc T. Zubrow, MD '77  
Elsa & Stanford R. Zukin

THANK YOU!



## CORPORATION AND FOUNDATION GIVING

Each year, gifts from corporations and foundations help make possible a wide array of Jefferson programs and initiatives, including groundbreaking biomedical research, scholarships and fellowships, innovations to improve patient care and community outreach efforts. Jefferson is grateful for the partnership of corporations and foundations that share our commitment to putting the needs of patients and students first.

### \$1,000,000 AND ABOVE

American Association for Cancer Research  
Farber Family Foundation, Inc.  
The Sidney Kimmel Foundation  
Jane & Leonard Korman Family Foundation  
The Marcus Foundation, Inc.  
Pancreatic Cancer Action Network  
Prostate Cancer Foundation  
Reconstructive Orthopaedic Associates II, P.C.

### \$500,000 – \$999,999

The Dr. Ralph '07 & Marian C. Falk Medical  
Research Trust  
The William Penn Foundation  
Rothman Institute  
The Paul Shaub Trust  
Strauss Foundation

### \$250,000 – \$499,999

Dr. Miriam & Sheldon G. Adelson Medical  
Research Foundation  
American Asthma Foundation  
American Diabetes Association  
American Heart Association  
Carol A. Ammon Foundation  
Breast Cancer Research Foundation, Inc.  
DeBRA International  
Joseph and Marie Field Foundation  
Hepatitis C Therapeutic Registry and Research  
Network  
The Legacy of Angels Foundation  
The Craig H. Neilsen Foundation  
The O.N.E. Research Foundation  
Schwab Fund for Charitable Giving  
Thomas Jefferson University Cardiology  
Research Foundation

### \$100,000 - \$249,999

AccessMatters  
Hugh L. Adams Charitable Trust  
American Cancer Society, Inc.  
Gustave G. & Valla Amsterdam Foundation  
DeRossi & Son Co.  
Ethicon, Inc.  
The John E. Fetzer Institute, Inc.  
The Honickman Charitable Foundation  
Janssen Scientific Affairs, LLC

The Jewish Community Foundation  
Juvenile Diabetes Foundation International  
Philadelphia Affiliate of Susan G. Komen Breast  
Cancer Foundation  
The Margaret Q. Landenberger Research  
Foundation  
The Benjamin & Mary Siddons Measey  
Foundation  
Alan B. Miller Family Foundation  
Noguchi Medical Research Institute  
Philadelphia Suburban Development Corporation  
Sledd Charitable Foundation  
The W. W. Smith Charitable Trust  
The Stratton Foundation  
Vanguard Charitable Endowment Program  
Women's Board of Thomas Jefferson University  
Hospital

### \$50,000 - \$99,999

ABMRF/The Foundation for Alcohol Research  
AO North America Charitable Foundation  
Association for International Cancer Research  
The Frederick Banting Foundation  
The Baxter Family Foundation  
Adeline Berk Living Trust  
The Edwin J. and Barbara R. Berkowitz Family  
Foundation  
Boston Scientific Corporation  
National Breast Cancer Foundation, Inc.  
William J. Clinton Foundation

Colon Cancer Coalition Foundation  
Covidien  
Delaware Valley Medical Center  
Eli Lilly and Company  
Fidelity Investments Charitable Gift Fund  
Foundation for Surgical Fellowships  
Michael J. Fox Foundation for Parkinson's Research  
Goldman, Sachs & Co.  
The Gray Charitable Trust  
Rick Hansen Institute  
The Hirshberg Foundation for Pancreatic Cancer Research  
Humana, Inc.  
The Institute for Integrative Health  
Kennedy's Disease Association  
Medtronic, Inc.  
The Parkinson Council  
Parkinson's Disease Foundation  
The Philadelphia Foundation  
Physicians Aid Association of the Delaware Valley  
Public Health Management Corporation  
Shriners Hospitals for Children  
Stryker Corporation  
United Mitochondrial Disease Foundation  
University City Science Center

## \$25,000 - \$49,999

Altor BioScience Corporation  
American-Italian Cancer Foundation  
American Society for Radiation Oncology  
AmerisourceBergen Corporation  
Bank of America Merrill Lynch  
C.R. Bard Foundation, Inc.  
Connelly Foundation  
Wallace H. Coulter Foundation  
Dry Family Charitable Foundation  
Fund a Cure for Pancreatic Cancer  
The IBC Network Foundation  
IC Laser Eye Care PC  
Institute on Medicine as a Profession, Inc.  
Intel-GE Care Innovations, LLC  
The Kahn Testamentary Foundation  
F.C. Kerbeck & Sons  
Ladies of Port Richmond  
Methodist Hospital Foundation  
National Research Corporation  
Karen M. Oldham Foundation  
Sarah Parvin Foundation  
Patriarch Family Foundation  
PDG Consulting, LLC  
The Philadelphia Eagles  
The Philadelphia Phillies  
The Pizzica Foundation

Norman Raab Foundation  
The Aileen K. & Brian L. Roberts Foundation  
The Suzanne F. and Ralph J. Roberts Foundation  
Sanofi-Aventis Pharmaceuticals, Inc.  
The Snider Foundation  
The Tally Foundation  
United Way of Greater Philadelphia and Southern New Jersey  
Joseph & Marion Wesley Family Foundation  
Zeldin Family Foundation

## \$10,000 - \$24,999

2 RFP Limited Partnership  
Advanced Pain Management & Spine Specialists  
Amaturo Family Foundation, Inc.  
ARAMARK Corporation  
ARAMARK Healthcare  
Ayco Charitable Foundation  
Lillie I. W. Baker Trust  
Patrick Shane Biddulph Foundation, Inc.  
Brandywine Realty Trust  
Brain Orthopedic Spine Specialist  
The Brind Foundation  
C. G. F. Associates  
Connecticut Hospital Association  
Convergent Laser Technologies  
The Cove Charitable Trust  
The Cozen O'Connor Foundation, Inc.

**\$10,000–\$24,999** CONTINUED

DiMarino, Kroop, Prieto Associates PA  
 Louis R. Dinon, MD Foundation  
 The Robert and Joan Dircks Foundation  
 Garfield G. Duncan Research Foundation  
 The Epilepsy Study Consortium  
 Firstrust Bank  
 Daniel B. and Florence E. Green Foundation  
 Helen's Angels  
 Melvin & Melva Herrin Family Foundation  
 Hunter Family Foundation  
 Huron Consulting Group, Inc.  
 IMA Consulting  
 Independence Blue Cross  
 Institute for Clinical Science & Art  
 The Raymond Klein Charitable Foundation  
 The Mary Kline Classic, Inc.  
 KLS Martin, L.P.  
 Susan G. Komen Breast Cancer Research  
 Foundation  
 Hyman Korman Family Foundation  
 The Edna G. Kynett Memorial Foundation  
 L & F Holding LLC  
 Legal Clinic for the Disabled  
 Lehigh Valley Business Coalition On Health Care  
 The Miles Lerman Family Foundation  
 Josiah Macy, Jr. Foundation  
 The Jamie & Lisa Maguire Family Foundation  
 Morphotek, Inc.  
 E. Murdoch Family Foundation  
 Levon Nazarian Foundation, Inc.  
 NewLink Genetics Corporation  
 O'Brien & Ryan, LLP  
 The Percy Fund  
 Pharmaceutical Research & Manufacturers of  
 America Foundation  
 Post & Schell, P.C.

PricewaterhouseCoopers, LLP  
 Rensselaer Polytechnic Institute  
 Rotko Family Foundation  
 Robert Saligman Charitable Trust  
 The Schwartz Foundation  
 The Michael Singer Foundation  
 Southwest Medical Associates, Inc.  
 SJV Management LLC  
 Walgreens  
 Wells Fargo Bank  
 The Wooden Nickel Foundation

**\$5,000–\$9,999**

Abington Health  
 Academy of Nutrition and Diatetics  
 American Endowment Foundation  
 Aon Foundation  
 Assured Guaranty Corporation  
 Ballard Spahr LLP  
 The Charles R. Briggs Trust  
 The Solomon and Sylvia Bronstein Foundation  
 Canada Dry Delaware Valley Bottling Co.  
 Cobb Foundation  
 The Community Foundation of Sarasota, Inc.  
 Dietz & Watson  
 Diversified Search  
 E4 Services, LLC.  
 Elliott Greenleaf  
 Ernst & Young Foundation  
 The FH Foundation  
 Lawrence C. Fuller, Jr. Memorial Diabetic Fund  
 GenomeDx Biosciences  
 The Glenmede Trust Company  
 Gobel Group  
 W. L. Gore & Associates  
 Margaret G. Jacobs Charitable Foundation  
 Jewish Communal Fund

Robert Wood Johnson Foundation  
 JP Morgan Chase & Co.  
 Kasdan Weber Turner LLP  
 Mainline Investment Partners, LLC  
 Mott's LLP  
 Network for Good  
 NRG Energy  
 NuFACTOR Specialty Pharmaceuticals  
 NXT Sports  
 The Rocco and Nancy Ortenzio Foundation  
 Pain Therapeutics, Inc.  
 Parkway Corporation  
 The Philadelphia Hand Center, P.C.  
 Proskauer Rose LLP  
 Radiation Injury Treatment Network  
 The Ravitz Family Foundation  
 Ross Family Fund  
 Rothman Family Foundation  
 SAP America, Inc.  
 The Sidewater Family Foundation, Inc.  
 Silicon Valley Community Foundation  
 Christine and Lawrence Smith Charitable Trust  
 Sterling Trustees  
 The T. Rowe Price Program for Charitable Giving  
 Tough Tested/ Mizco International  
 Tulsa Community Foundation  
 Universal Health Services, Inc.  
 Dorothea W. Walton Memorial Trust

**\$2,500–\$4,999**

Academic Urology of PA, LLC–Bryn Mawr Division  
 Advanced Dermatology, PC  
 Astellas Pharma US, Inc.  
 The Benevity Community Impact Fund  
 The Louis and Sandra Berkman Foundation  
 Joseph Bilinski Charitable Trust  
 Bryn Mawr Trust Company



F. E. Buehler and Son Inc.  
 Celgene Corporation  
 Checking for Cancer  
 Community Foundation of Jackson Hole  
 Cotler Family Foundation Inc.  
 Creative Production Resources  
 Eckert Seamans Cherin & Mellott LLC  
 Ethicon Endo-Surgery, Inc.  
 Forest Laboratories, Inc.  
 The Arnold P. Gold Foundation  
 James W. Fox, IV, MD Associates, LTD  
 INS Consultants, Inc.  
 Intelligent Medical Decisions, Inc.  
 Johnson & Johnson Family of Companies  
 Christian R. & Mary F. Lindback Foundation  
 Magee Rehabilitation Hospital  
 MainLine Private Wealth, LLC  
 Samuel P. Mandell Foundation  
 Medtronic YourCause, LLC  
 Perthera  
 Physician and Tactical Healthcare Services, LLC  
 The Prime Rib  
 The Rauch Family Foundation  
 Gilroy & Lillian P. Roberts Charitable Foundation  
 The Richard and Barbara Rovit Family  
 Foundation, Inc.  
 Susan Marie Rupp Foundation  
 Schnader, Harrison, Segal & Lewis LLP  
 Shields and Shields, M.D., P.C.  
 Shire  
 Mary Deas Sinkler Fund  
 Sioux Falls Area Community Foundation  
 UHS Children Services  
 W.H. Myers Construction Co.  
 The Yampolsky Foundation

## \$1,000–\$2,499

Abbvie  
 Abramson and Denenberg, PC  
 Achieve Physical Therapy and Fitness, LLC  
 Advanced Health Media  
 Aetna Foundation, Inc.  
 AgileCat  
 Albertsons, Inc.  
 American College of Physicians Pennsylvania  
 Eastern Chapter  
 Amgen, Inc. Political Action Committee  
 Amshel Charitable Foundation  
 Bank of America Charitable Gift Fund  
 Bank of American Fork  
 Barclays Capital Geps Americas  
 Bohler Engineering PA, LLC  
 Bryn Mawr Racing Company  
 Carty Eye Associates, LTD  
 CBS Radio Inc.  
 Center For Spiritual Living Morristown  
 Chipotle Mexican Grill  
 The Church of the Assumption BVM  
 Communications Test Design, Inc.  
 Community Foundation for Greater Atlanta  
 Community Foundation of New Jersey  
 Conshohocken Boccista Club  
 CVS Health Foundation  
 D & D Securities  
 Dendreon  
 Tony DePaul & Son  
 Abraham M. and Rose Ellis Foundation  
 E.M. Adams Co., Inc.  
 The Epstein Family Foundation  
 Feen Foundation  
 Forney Family Foundation  
 The Foundation for the Jewish Community

Eugene Garfield Foundation  
 Genentech, Inc.  
 General Surgical Care, P.C  
 Health Strategies & Solutions, Inc.  
 Hufty Foundation  
 Greater Kansas City Community Foundation  
 Killion Medical Associates  
 The Kimmel-Spiller Charitable Foundation  
 Bonnie Kroll Melanoma Memorial Fund  
 The LG-MEP Family Foundation  
 Linlunth Foundation  
 Market Street Bancshares, Inc  
 MCG Health, LLC  
 McGrath Technical Staffing, Inc.  
 MMW  
 The Morrison Center  
 Newman & Company, Inc.  
 Northeastern Pennsylvania Plastic Surgery  
 Associates, LTD  
 P. Agnes, Inc.  
 PANCREA  
 Pedal for a Cure  
 Penn Distributors  
 Pepper Hamilton LLP  
 Philadelphia Corporation for the Aging  
 Anthony A. Previti Family Charitable  
 Foundation, Inc.  
 Professional Health Care Dynamics  
 Quagga Accessories, LLC  
 Ratner & Associates, LLC  
 Saul & Reina Robbins Family Charitable  
 Foundation  
 Kelly Ann Rooney Memorial Foundation Corp.  
 Rowan Family Foundation, Inc.  
 Sewickley Academy  
 The Shapiro Family Foundation  
 Sam & Kate Sidewater Foundation



\$1,000–\$2,499 CONTINUED

Simkins Corporation  
Tampa Orlando Pinellas Jewish Foundation, Inc.  
Tompkins Insurance  
Toxicology & Pharmacology, Inc.  
Truist, Inc.  
United Way of Bergen County

\$500–\$999

Advanced Dermatology MOHS & Laser Surgery Center, PA  
Allied Beverage Group  
Altair Direct Mail Management, Inc.  
Ashley Foods, Inc.  
Assumption School  
Athens Orthopedic Clinic PA  
Banana Pie Marketing, LLC  
Bank of America Corp  
Bristol-Myers Squibb Company  
Burlington Chevrolet  
Cambridge University Press  
Cardone Family Foundation  
CBIZ MHM, LLC  
Center For Dermatology, Laser and Cosmetic Surgery, LLC  
Charitybuzz  
The Classics  
The Community Foundation for the National Capital Region  
Contact Communications  
FHA Holding Company  
The Bruce & Adele Greenfield Foundation  
Howard Fischer Associates International  
Jefferson University Radiology Associates, LLC  
Krispy Kreme Doughnuts  
Lasko Family Foundation  
The LundyLaw Foundation  
Milestone Bank  
New Jersey Medical Group Management  
Olitsky Family Foundation  
Phillips, Campbell & Phillips, LLP  
Regulatory Insurance Services  
Risk Replacement Services, Inc.  
Saks Fifth Avenue

Salem Country Club, Inc.  
The San Diego Foundation  
The Saramar Charitable Fund  
Schuylkill Medical Center East- Norwegian Street  
Schuylkill Medical Center- South Jackson Street  
Howard J. Sedran Family Foundation  
Seline Family Foundation, Inc.  
The Speech Clinic, Inc.  
Sysco Food Services of Philadelphia  
United Way of Delaware  
Visa Givingstation  
Williamson Corinthian Charity Income Account Lodge 368



United Way of Central New Mexico  
United Way of York County  
Upper Merion Middle School  
Veolia Energy  
Weisman Foundation Trust  
Wells Fargo Philanthropy Fund  
Wells Fargo & Company  
Walter Williams Foundation Charitable Remainder Trust  
Frances Helen Witmer Trust  
Young Adjustment Company, Inc.

## 1824 SOCIETY

Individuals who support Jefferson's future through charitable planned giving become members of the 1824 Society, named for the year of Jefferson's founding. By including a gift to Jefferson as part of their estate plans, these benefactors help ensure that in perpetuity Jefferson will be able to provide the highest-quality education, deliver unparalleled patient care and conduct groundbreaking research.

Whether through their will, a life income trust, a retirement plan or another planned giving vehicle, the following donors have made a commitment in fiscal year 2015 that will benefit future generations of patients, students and faculty members at Jefferson.

Valla ♦ & Gustave Amsterdam ♦  
Daniel L. Backenstose, MD '50 ♦  
Warren C. Batroff Trust  
William & James Bayard Trust  
Edward P. Beach Charitable Trust  
Clement Biddle Trust  
John Bilawckas Trust  
George F. Blechschmidt, MD '58 ♦  
Joseph M. Corson, MD '47  
Sarah & Larry Danforth  
Barbara M. Day ♦  
Julia ♦ & Thomas D. Duane, MD ♦  
Alfred W. Dubbs Trust  
Mignon Dubbs Trust  
Robert J. Gibbons Trust, MD '43, FACS  
James B. Gilbert, MD '46  
James A. Gilmartin  
Rena H. ♦ & Morton Grad ♦  
The Raymond C. Grandon Trust  
Doris & Raymond C. Grandon, MD '45  
Roma & Philip S. Green, MD '56 ♦  
The Estate of Virginia M. Guarino  
Lilian Guthrie Fund  
Debra Hollander

Leah ♦ & George Hollander, MD '39 ♦  
The Estate of Lois A. Johns  
Roy Korson, MD '47 ♦  
Beatrice H. ♦ & Willard A. Krehl, MD ♦  
Estate of Miriam E. Laveson  
Henry Leffmann Trust  
Carole D. Schlocker & Ellis R. Levin, MD '75 '78  
Evelyn K. Livingood Trust  
Anna J. Magee Trust  
Nicholas J. Maiale, Esq.  
Estate of Helen McGinnis  
Connell H. Miller, MD Trust  
Estate of Leslie E. Morgan  
Bayard Murray Trust  
Gloria M. and Benjamin Olewine, III Trust  
Roberta Jean Richardson Trust  
The Joseph C. Romano Trust  
Herbert C. Rorer Trust  
Estate of Florence J. Rossell  
Marshall C. Rumbaugh, MD Trust Fund  
William T. Sallee, MD '49 ♦  
Clarence D. Senseman Trust  
Eileen Long & Tarik R. Shahbender  
Charles M. Shander Trust

The Paul Shaub Trust  
Bartholomew Shea Trust  
Jennie M. Shoemaker Trust  
Bessie L. Skellie Trust  
Sledd Charitable Foundation  
Florine R. Stone Trust  
Estate of Raymond Shaw Tomassene  
Finley L. Walton Trust  
George D. Wasserberger  
Estate of Sylvia E. Weiss  
F. P. Winne Trust  
Frances Helen Witmer Trust  
Norman M. Woldorf, MD '64 ♦  
Samuel K. & Lois T. Wolf Education Fund  
Charitable Trust  
Theresa Yeo, PhD, MPH, CRNP & Charles J. Yeo,  
MD

♦ Deceased



BOARD MEMBERS AND VOLUNTEERS

# REINNVIGORATE

## BOARD MEMBERS & VOLUNTEERS

### THE WOMEN'S BOARD OF THOMAS JEFFERSON UNIVERSITY HOSPITALS

Vanessa Weisman, *President*  
Donna Archambault  
Jennifer Jasmine Arfaa  
Cheryl Atkins-Lubinski  
Ronnie Bradley  
Marlene Brenner Ferguson  
Joan Brucker  
Ingrid Butcher  
Antonia Caruso  
Sherry Cohn  
Florence Cotler  
Loretta Crowell  
Harriet Disston  
Vickie Farber  
Mary Anne Fellman  
Crystal Fennell  
Kathleen Fox  
Susan Goldberg  
Hava Grunwald  
Lisa Hale  
Jean Haley  
Dorrance Hamilton  
Ingrid Herrera  
Linda Hunt  
Penny Jaeger  
Ellen Judy  
Madelyn Karasick, MD  
Tae-Ock Kauh, PhD  
Kris Kent  
Audrey Knowles

Elaine Landau  
Carol Levin  
Anita Majdan  
Joanne Marshall  
Kathleen McCoy  
Therese McDevitt  
Rosemary McNulty  
Olga Mitchell  
Kathryn Moses  
Tanya Moses  
Jean Nasca  
Claudia Nazarian  
Betty Nicholson  
Peggy O'Donoghue  
Natalia Pestell  
Adrienne Rodgers  
Donna Salvo  
Patricia Schley  
Miriam Schwartz  
Edna Shaw  
Susan Silver  
Arlene Sukonik  
Alice Lea Tasman  
Marcella Theodos  
Anne Tsangaris  
Sharyn Vergare  
Robin Williams  
Theresa Yeo, PhD

### BOARD OF PRESIDENTIAL ADVISORS

Timothy Brigham, PhD  
Bert Bruce, MBA  
Ron Caplan  
Thomas Connelly  
Judy Genshaft, PhD  
Kurt Hilzinger  
Linda Johnson, MBA  
Keith Leaphart, DO  
Charles Lewis  
Mark Nicoletti  
Eliana Papadakis  
Hon. Edward Rendell

### PRESIDENT'S LEADERSHIP COUNCIL

James Beers, MBA  
Bertram Chinn, MD  
Lee Ducat  
Ellen Farber  
William Harral, III  
Debra Hollander  
Bradley Korman, MBA  
Craig Novak  
Michael Pellini, MD, MBA  
Marie Pinizzotto, MD, MBA  
Ninfa Saunders, FACHE  
Judith von Seldeneck  
Stephen Slogoff, MD  
Joseph Weiss  
Marc Zemel, MBA  
Karen Zimmer, MD, MBA

### MYRNA BRIND CENTER OF INTEGRATIVE MEDICINE ADVISORY BOARD

Ira Brind, *Chair*  
Richard Barnhart  
Lee Berg  
Alvin Block  
David Brind  
Ronald Burd  
Ron Caplan  
Gwen Goodman  
Lynne Honickman  
Nina Korsh, PhD  
A. Donald McCulloch, Jr.  
Daniel Monti, MD, MBA  
Sister Mary Scullion  
Larry Stone  
Judith Tykocinski  
Midge Vaccaro  
Harriet Weiss

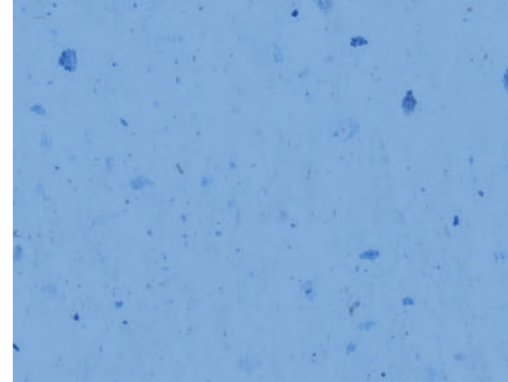
## SIDNEY KIMMEL CANCER CENTER ADVISORY BOARD

Joseph Weiss, *Chair*  
Kenneth Adelberg  
Hon. Kim Beazley  
Edwin Boynton  
Barry Bressler  
Alan Casnoff  
Stephen Foxman  
Devyn Gehret  
John Gill  
Edward Glickman  
Morris Gocial  
William Levy  
Diana Mackie  
Mark Nicoletti  
Jeffrey Orleans  
Hon. John Padova  
Leslie Stiles

## SIDNEY KIMMEL MEDICAL COLLEGE ALUMNI ASSOCIATION EXECUTIVE COMMITTEE

Joseph F. Majdan, MD, FACP  
(PGA '81), *President*  
Wilfreta G. Baugh, MD '79  
Andrea J. Becker, MD '80  
Mark L. Belafsky, MD '71  
Richard H. Bennett, MD '75  
Tara J. Berman, MD '00  
Laura Rothfeld Bond, MD '87  
Benjamin M. Braslow, MD '96  
Louis T. Broad, MD '74  
Harvey S. Brodovsky, MD '61  
Patrick S. Buckley, MD '12  
Clara A. Callahan, MD '80  
Matthew H. Carabasi, MD '80  
John W. Caruso, MD '91  
Allen E. Chandler, MD '61  
Karen A. Chojnacki, MD '00  
Theodore A. Christopher, MD '86  
William W. Clements, MD '58  
Herbert E. Cohn, MD '55  
Patricia M. Curtin, MD, FACP '88  
Nancy S. Czarnecki, MD '65  
Anna Marie D'Amico, MD '72  
Matthew V. DeCaro, Jr., MD '80  
Danielle M. DeHoratius, MD '02  
James M. Delaplane, MD '64  
Anthony J. DeRossi, MD '69  
Lori A. DePersia, MD '81  
Rudolph T. DePersia, Jr., MD '81  
Robert J. Diecidue, MD '97, DMD  
Paul J. DiMuzio, MD '95  
Karl Doghramji, MD '80

Joseph B. Doto, Jr., MD '66  
Merle Edelstein, MD '65  
Gary Emmett, MD '76  
Daniel T. Erhard, MD '51  
Kristopher Fayock, MD '08  
Christine Feldmeier, MD '11  
Jonathan M. Fenkel, MD '04  
Howard L. Field, MD '54  
David L. Fischman, MD '91  
James W. Fox, IV, MD '70  
Renee Frank, MD '10  
John J. Gartland, MD '44  
Mark G. Graham, MD '81  
Paul E. Goldberg, MD '75  
Stuart L. Gordon, MD '81  
Michael F. Harrer, MD '93  
William V. Harrer, MD '62  
James S. Harrop, Jr., MD '95  
Craig T. Haytmanek, MD '72  
Margaret Hessen, MD '82  
Ignatius S. Hneleski, Jr., MD '64  
James T. Hopkins, MD '80  
Stanley R. Jacobs, MD '72  
Edward A. Jaeger, MD '64  
Shailen Jalali, MD '85  
Caitlyn M. Johnson, MD '11  
John C. Kairys, MD '88  
Gregory C. Kane, MD '87  
David Karasick, MD '74  
Stephen Karasick, MD '74  
Louis L. Keeler, Jr., MD '67  
Matthew S. Keller, MD '05  
Joseph F. Kestner, Jr., MD '68  
Hiroto Kiguchi, MD '11  
Matthew J. Killion, MD '93  
Lorraine C. King, MD '75  
M. Dean Kinsey, MD '69



## BOARD MEMBERS & VOLUNTEERS

Max M. Koppel, MD '57  
 Daniel Erik Kremens, MD '00, JD  
 Erin B. Lally, MD '11  
 Kathleen M. Lamb, MD '09  
 Nicholas LoPresti, MD '96  
 James V. Mackell, MD '46  
 David P. Maguire, MD '82  
 Gregory D. Marhefka, MD '98  
 Adam Mariotti, MD '05  
 Gerald J. Marks, MD '49  
 John H. Marks, MD '89  
 Phillip J. Marone, MD '57, MPH '07



Robert G. McCairns, Jr., MD '76  
 Geno J. Merli, MD '75  
 Lino F. Miele, MD '05  
 Stanton B. Miller, MD '80  
 Gregory Mokrynski, MD '86  
 Stephanie M. Moleski, MD '05  
 Owen Montgomery, MD '85  
 Lynne Odorisio Mroz, MD '87  
 Thomas J. Nasca, MD '75, MACP  
 Jennifer M. Naticchia, MD '92  
 Philip Nimoityn, MD '76  
 Andrew J. Norton, MD '82

Karen D. Novielli, MD '87  
 Ellen J. Plumb, MD '10  
 Charles Pohl, MD '87  
 John R. Patterson, MD '54  
 Pamela A. Polise, MD '93  
 Robert Poole, MD '53  
 Bernadette C. Profeta, MD '97  
 James J. Purtil, MD '93  
 Heather Ragozine-Bush, MD '09  
 Vijay M. Rao, MD (PGA '78)  
 Anne F. Reilly, MD '87  
 Patrick M. Reilly, MD '87  
 Joseph A. Riggs, MD '64  
 Marianne T. Ritchie, MD '80  
 Albert A. Rizzo, MD '78  
 Catherine T. Rommel, MD '80  
 F. Michael Rommel, MD '81  
 Ernest L. Rosato, MD '90  
 Francis E. Rosato, Jr., MD '99  
 Edward B. Ruby, MD '71  
 Marianne Ruby, MD '79  
 Samuel R. Ruby, MD '76  
 Nicholas J. Ruggiero, MD '66  
 Joaquin Sario, MD '83  
 Michael P. Savage, MD '80  
 Mark E. Schadt, MD '85  
 Mark Schlitt, MD '89  
 Kristine L. Schultz, MD '12  
 Peter V. Scoles, MD '70  
 Maria Scott, MD '87  
 Joseph L. Seltzer, MD '71  
 Ashwini D. Sharan, MD (PGA '01)  
 Rajan Singla, MD '11  
 Stanton N. Smullens, MD '61  
 Joseph W. Sokolowski, Jr., MD '62  
 Joseph R. Spiegel, MD '79  
 Abigail R. Strang, MD '11  
 Emily P. Sutton, MD '12

Joseph B. Szgalsky, MD '85  
 Daniel I. Taub, MD '04  
 Carol A. Tavani, MD '79  
 Danielle M. Tholey, MD '11  
 Kanani Titchen, MD '12  
 Stavropoula I. Tjoumakaris, MD '03  
 Gary A. Tuma, MD '96  
 Giovanna L. Uzelac, MD '11  
 Michael A. Valentino, MD '12  
 George P. Valko, MD '86  
 Jerome Vernick, MD '62  
 Susan B. Ward, MD '85, FACP  
 Michael S. Weinstein, MD '94

### Non-Alumni Faculty

Rodney B. Bell, MD  
 Katherine T. Berg, MD  
 Gretchen Ann Diemer, MD  
 Leonard M. Eisenman, PhD  
 Zvi Grunwald, MD  
 Steven E. McKenzie, MD, PhD  
 John O. Ogunkeye  
 Richard R. Schmidt, PhD  
 J. Raymond Shea, Jr., PhD, FAS  
 Kathleen Squires, MD  
 Tara A. Uhler  
 Michael J. Vergare, MD  
 Charles J. Yeo, MD

### Student Representatives

Sarah Ahmed (Class of 2017)  
 Jonathan Beri (Class of 2015)  
 Elizabeth Gilje (Class of 2016)  
 Steven Lazar (Class of 2017)  
 Justin Torosian (Class of 2016)

## JEFFERSON DIPLOMA NURSES ALUMNI ASSOCIATION BOARD

Aileen I. MacMillan '76, *President*  
 Joan Caruso '76  
 Eileen McDevitt Cooney '77  
 Susan Albrecht Curcio '80  
 Patricia Maro DeHart '77,  
*Recording Secretary*  
 Rae Matz Fierro '77,  
*Treasurer*  
 June Matsuo Fujita '50  
 Dolores Heckenberger '55  
 Emily Nash Hollenbach '50  
 Muriel Joan LeVan Keller '58  
 Tamara Tichian Magenta '81  
 Maria Gratzik Marinelli '70  
 Theresa O'Brien '75  
 Karen Mulligan Robnett '77,  
*Vice President*  
 Mary Greenwood Schaal '63

## JEFFERSON COLLEGE OF NURSING ALUMNI ASSOCIATION BOARD

Frances Amorim, BSN '76, MSN  
 Karen Dahlquist, BSN '86, MSN '98  
 Giuliana Labella, BSN '10  
 Aileen I. MacMillan, DN '76  
 Lisa Wus, MSN '02, DNP '14



## JEFFERSON COLLEGE OF HEALTH PROFESSIONS ALUMNI ASSOCIATION BOARD

Jill Weinberg, MS '05, OTR/L (Occupational Therapy), *President*  
Lee A. Bradley, MSRT (R)(CT)(QM) ARRT (Radiologic and Imaging Sciences)  
Reneé Chaiken, BS '10 (Health Services Management), *Secretary*  
Mary DeGeorge, MSRS, RDMS, RT (R) ARRT (Radiologic and Imaging Sciences)  
Mikina Harrison, CPC, BS '07 (Health Services Management)  
Angie Dion, MFT '10 (Couple and Family Therapy)  
Elizabeth Earnshaw, MFT, '11 (Couple and Family Therapy)  
Paul Heim, BS '87 (Physical Therapy)  
Lars P. Handago ARRT(R)(N) CNMT, BS'12 (Radiologic Sciences)  
Gary Lunger, MSRIS, RT (R)(N)ARRT (Radiologic and Imaging Sciences)  
Megan E. Gibbons Maciborski, MSPT '04 (Physical Therapy)  
Danielle Massi, MFT'12 (Couple and Family Therapy)  
Steven F. Merkel, MS '09 (Cytotechnology)  
Charles Nelson '87 (Post-Bacc Certificate, Occupational Therapy)  
Tristan Procopio, MSRIS '12 (Radiologic and Imaging Sciences)  
Shannon W. Saldana, MS '06, OTR/L (Occupational Therapy)  
Scott Segan, MS '13, RVT, RDMS (Radiologic Sciences, MultComp), *Past President*  
Brenda Schuette, MS, R.T. (R)(M)(QM), '07 (Radiologic and Imaging Sciences)  
Natalie Sibley, PT '02, DPT, NCS (Physical Therapy)

### **Student Representatives**

Thomas Daniel (Class of 2015, DPT)  
Gabriel Streisfeld (Class of 2016, DPT)  
Danielle Veacock (Class of 2015, DPT)

## JEFFERSON COLLEGE OF BIOMEDICAL SCIENCES ALUMNI ASSOCIATION BOARD

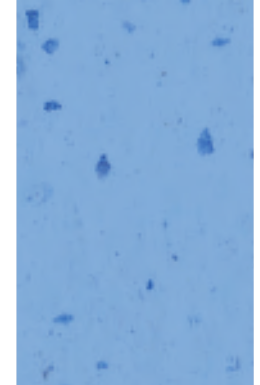
Jonni S. Moore, PhD (Microbiology & Molecular Virology '84), *President*  
Steven W. Bass, PhD (Pharmacology '70)  
Michael S. Blank, PhD, FACB (Physiology '76)  
Matthew Colombo, PhD (Immunology '11), *Secretary*  
James Foley, PhD (Physiology '76)  
Elaine Z. Francis, PhD (Anatomy '78)  
Joseph C. Marini, PhD (Immunology '97)  
Kristy Shuda McGuire, MS, PhD (Genetics '09)  
Ahmad Bilal Naim (Post-Doc)  
Anthony Torre, MS (Biomedical Chemistry '98), MBA, *Treasurer*  
Aubrey Watkins III, PhD (Pharmacology '02)  
Mary H. Whitman, PhD (Biochemistry '86), *Former president (Deceased)*

### **Emeritus Members**

Fredda London, PhD (Biochemistry '87)  
Michael Rieders, PhD (Pharmacology '85)  
Leonard M. Rosenfeld, PhD (Physiology '64)

### **Non-Board Committee Members**

Sanjoy "Biz" Biswas, MS (Pharmacology '97)  
Michael Powell, PhD  
Robert L. Siegel, PhD (Biochemistry & Molecular Biology '82)  
David Zuzga, PhD (Genetics '08)



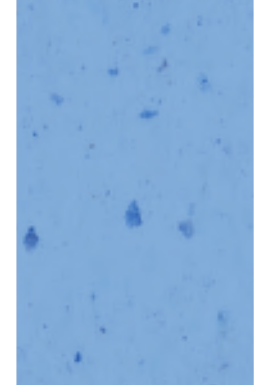
BOARD  
MEMBERS &  
VOLUNTEERS

THOMAS JEFFERSON UNIVERSITY HOSPITAL  
VOLUNTEERS

*Volunteers from all backgrounds and walks of life donate their time to Jefferson. They serve as greeters, office assistants, patient escorts and companions, music therapists and much more. Volunteers are an important part of the special care given to our patients and their families; their efforts help Jefferson deliver the highest-quality "care with caring."*

Taalib Abdullah	Stacey Bowditch	Victoria Cobb	Hannah Droogan	Rachel Giatras	Allison Jakavick
Akosua Adubofour	Marlon Bowser	Paula Cohen	Marietta Dunn	Elisabeth Giraud	Liz James
Osman Ahmad	Catherine Brennan	Josephine Cohen	Kaile Dunn	Alba Gjikhuri	Brooke Jensen
Gabrielle Aiello	David Brito	Samantha Cole	Caroline Dunne	Jared Gorin	Pankhuri Jha
Sabina Akhter	Amanda Broadwater	Bianca Cooper	Gerald Durkan	Aviva Gorstein	Tylar Jones
Saleem Alameh	Chantel Brown	Betty Coyle	Lindsay Eckersberg	Joanne Gotto	Sabrina Kagan
Madeline Albert	Tyler Brown	Howard Cramer	Cherna Edelman	Kimberly Graham	Jobin Kalathil
Beateshia Alexander	Paula Bu	Sally Crann	Nazar Elhassan	Marina Grant	Choekgi Kalsang
Arcadio Alfonso	Robert Bueding	Mercedes Crawford	Jane Elkis	Stephanie Gross	Austin Katona
Sophie Arno	Marlena Buonasorte	Shannon Cullen	Sean Elliott	Barry Gutman	Allison Keane
Elenore Avril	Patricia Burzak	Dana D'Antonio	Hannah Emerson	Christine Guyre	Frank Kelly
Luanne Balestrucci	Najah Bush	Brian Dahlben	Kathleen Enderle	Jenna Hackenberger	Kashaan Kennard
Tracy Bancroft	Caitlin Byham	Christina Dapontes	Mikaela Estepp	Jennifer Haddy	Peter Kenyon
Lauren Barton	Dane Caffrey	Rushi Dave	Maria Evgeniadis	Sima Hanau	Ammara Khalid
Pearl Basser	Ian Campbell	Lauren Davis	Alessandra Fantuzzi	John Harbold	Daniel Khariton
Pilar Bautista	Jake Cantwell	Heaven Daye-Jackson	Claire Farnum	Stephanie Harding	Jamie Klein
Madeline Baxter	Madison Caplan	Laurie Deeb	Ammar Farooqi	Ashley Harridan	Marliyn Kleinsman
Johanna Beck	Christopher Carroll	Nathan Del Mundo	Trice Fatima	Kurt Hartig	Samantha Klingerman
Debra Behnke	Lory Casillas	Anne Delengowski	Andrew Feliciano	Umar Hayat	Xiangxuan Kong
Declan Bell	Samantha Cassel	Renee Dembo	Giovanna Ferro	Beverly Hayden	Julia Kothman
Sonia Bhojwani	Astrid Cerrada	Kathleen Demedio	Michele Fiorella	Patricia Hines	Priya Krishnaprasad
Winona Bhushan	Mita Chauhan	Gaia Diagocomo	Alexander Fischman	Naomi Hirsch	Steven Kustka
Brooke Bickelman	Lin Jia Chen	Rodrigo Diaz Bravo	Gabrielle Foreman-Marrow	Lindsay Hoff	Alex Kwon
Deborah Binder	Andrea Cherenack	Andrew DiMatteo	Margaret Fox	James Hogan	Elizabeth Kwong
Nona Bloom	Perla Cherfane	Olesya Dimova	Barbara Francos	Janice Holshin	Kristen Laiz
Matthew Bocchese	Sammantha Chiu	Amelia DiValerio	Christine Frazier	Richard Horn	Parth Lakakia
Cecilia Bomban	Mariah Cicioni	Phuong Do	Ellen Friedman	Kristy Hou	Stephanie Langston
Ryan Bonner	Kyle Cissone	robert Doyle	Ellen Friedman	Shelly Houser	Mark Lavorini
Emily Booz	Clarence Clark	Ciara Droogan	Diego Galindo	Gary Hovsepian	Carlene Lawrence
Anna Bostwick	Carole Clay	Michael Droogan	Leah Garden	Amanda Howard	Jamie Lawrence
			Katelynn Garden	Whitney Howzell	Zachary Lazev
			Aoife Garvey	Annie Hu	Soo R. Lee
			Zakiyah Gauthney	Michaiah Hughes	Bryan Lerner
			Zakiyah Gautney	Patricia Hwang	Mickey LeRoy
			Kierra German	Kenneth Hy	Rebecca Levenberg
			Adeeba Ghias	Delfin Iglesia	Janet Levitt
			Annette Giannini	Samantha Jaffe	Xinwei Li

Jennie Li	Quaintesha McKinney	Terrill Pearson	Francesca Seykora	Alexandria Torrissi	Tene Williams
Xin Li	Rachel McLaughlin	Brenda Pedro	Mariya Shalumova	Clarissa Townsend	Joanna Wisniewski
Haisi Liang	Krista Melograno	Sylvia Peebles	Paula Shapiro	Duong Tran	Gwendolyn Witherspoon
Zheng Lin	Taylor Merkle	Ayana Pennington	Arth Sharma	William Tran	Tara Wolfson
Yujing Lin	Sayaka Merriam	Janelle Perry	Dayita Sharma	Thuongvu Tran	Stacey Wright
Kathryn Linder	Cecilia Metz	Michaela Petrone	Shakia Shaw	Vien Tran	Aidong Wu
Kevin Liu	Juliana Michniak	Katlyn Petrucelli	Beverly Shin	Fatima Trice	Alexis Wyeth
Sokunvichet Long	Joseph Midiri	Zaneta Phean	Shruti Shroff	Mary Troxell	Amari Wylie
Megan Longenberger	Rose Milani	Jacob Phillips	Timothy Slattery	Billy Truong	Din-Qi Yang
Peter Lonngren	Yasaman Mirafzali	Gina Phillips	Jordan Smith-Cottrell	Yvonne Tsang	Yuhan Yao
Consuelo Lopez	Siddhi Mittal	Melvin Pierson	Kendall Somer	Maryanne Tsangaris	Danielle Yates
Jazmine Lord	Syed Mohsin Mazhar	Kimberly Polanco	Ayesha Soomro	Alexandra Tsekaris	Shucheng Ye
Daniel Louis	Pear Mok	Christine Pontecorvo	Jennifer Sparrow	Mary Ann Tucker	Bo Hyung Yoon
Alisa Lozano	Jacob Morris	Jasmine Powell	Carly Staico	Jenna Tulio	Erika Young
Samantha Luna	Susan Moul	Najeema Preston	Richard Steinbrink	Susan Turizzo	Lisa Yoworsky
Andrew Ly	Kasja Mullen-Reynolds	Elsie Ramsey	James Stewart	Andrew Viscusi	Hslanguo Yuan
Amy Ma	Michael Mulroe	Melissa Raphael	Reba Strong	Molly Vocino	Mary Zajackowski
Pamela MacDonald	Monisha Murarka	Sondra Rech	Jackie Stulb	Jesse Wagner	Adman Zeb
Jamie Madison	Meaghan Murphy	Anne Reiley	Glenda Super	Ann Walker	Salma Zeb
Eugene Maier	Carolyn Murray	Sam Ricci	Pavan Suresh	Elizabeth Walz	Abigayle Zee
Theresa Malatesta	Cynthia Myers	Debra Robinson	Janet Taksa	Donna Welser	Ashenafi Zewde
Marcella Marino	Ramzy Nagle	Justin Rock	Michelle Tan	Kerry White	Hong Yan Zhang
Justine Marks	Maki Nakazato	Jasmine Rosario	Prasanna Tati	Myles Wiggins	Anne Zhang
Jared Marshall	Kelly Napolitano	Ashley Rosario	Stephanie Tauscher	Ellen Wildner	Huating Zheng
Bobbi Mason	Rohini Narayan	Scott Rosen	Ron Taylor	Matthew Will	Allison Zheng
Tyler Mason	Marlene Nawrocki	Michael Roshko	Sarah Taylor	Donna Williams	Jenny Zhong
Kenneth Mason	Thanhtho Nguyen	Alex Rowan	Darek Taylor	Ashley Williams	
Suzannah Maynard	Thanh Nguyen	Teresita Ruch	David Terhune		
Dominika Mazur	Nhi Nguyen	Mary Russell	Krishan Thadani		
Shenika McAlister	Vivian Nguyen	Emilee Rutherford	David Thai		
Daniel McCade	Garrison Nord	Julia Ryan	Dana Thomas		
Rhuedina McClendon	Joseph O'Malley	Marco Sachse	Nicholas Thompson		
Ann McGovern	Anna Odell	Sheyla Salas	Jenna Tibbitts		
Brendan McGuire	Tom Owens	Negar Salehianzandy	Jordan Tisdale		
Grace McGuire	Angelica Owens	Samantha Saludades	Patrice Todd		
Markeera McIntosh	Louie Pacell	John Scott	Sarah Tomlinson		
Jonae McKinney	Jesal Patel	Alfredo Servillas	Sarah Tomlinson		



# FISCAL YEAR 2015 FUNDRAISING SUMMARY

JULY 1, 2014-JUNE 30, 2015

## JEFFERSON FUND



IN FISCAL YEAR 2015,  
A TOTAL OF  
**8,682 DONORS**  
CONTRIBUTED MORE THAN  
\$50 MILLION TO JEFFERSON.

GRATEFUL  
PATIENTS  
& FRIENDS  
4,546

ALUMNI  
2,742

35 TRUSTEES

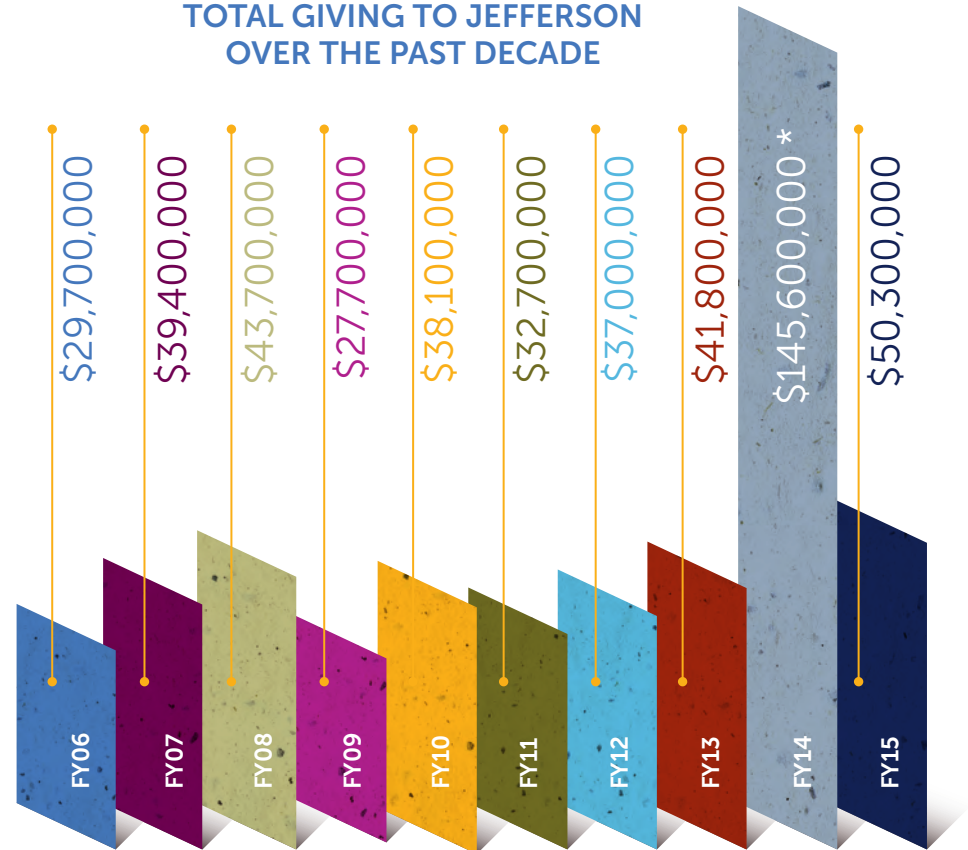
209 PARENTS

400 FACULTY & STAFF

541 CORPORATIONS  
& FOUNDATIONS

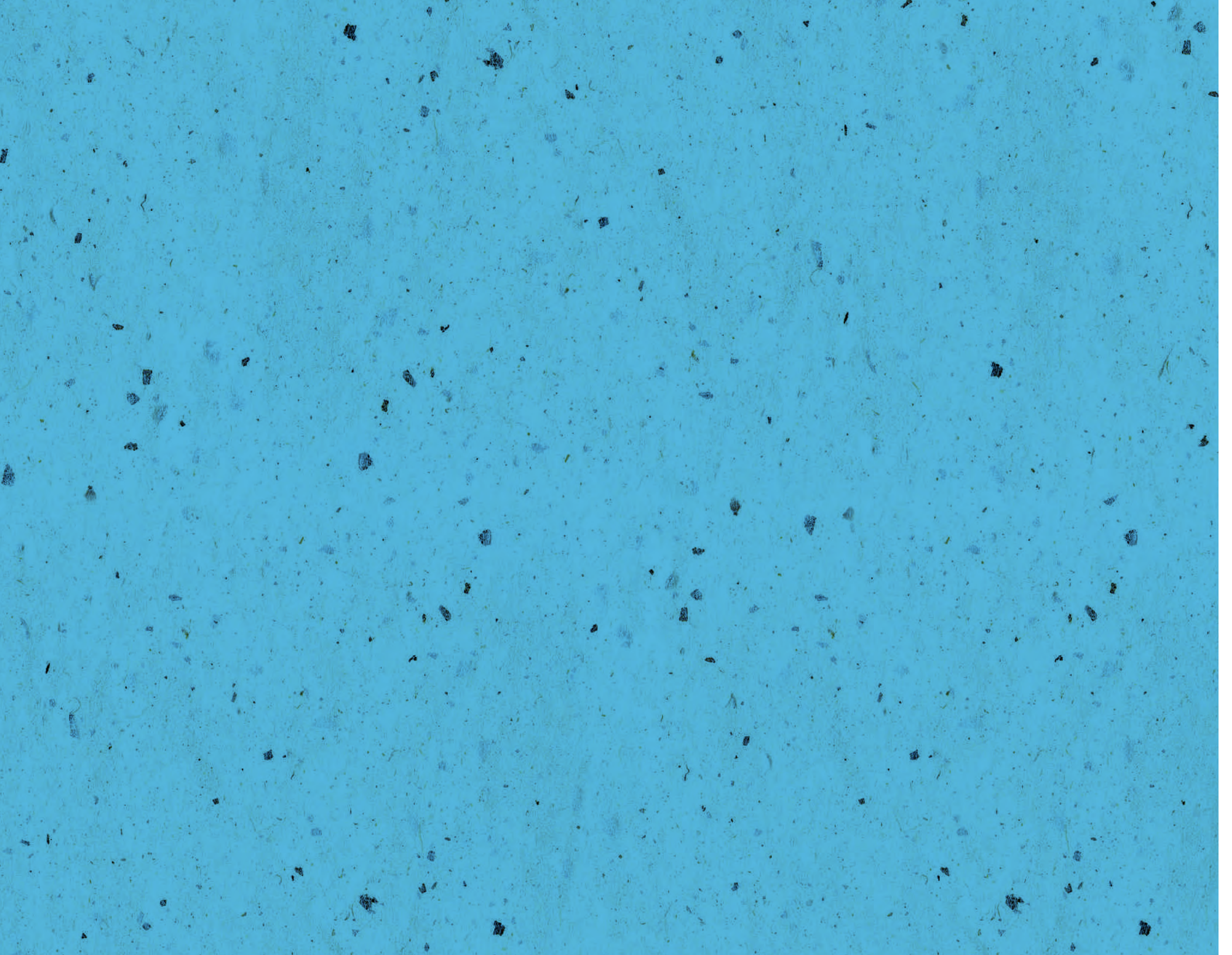
209 OTHER  
INDIVIDUALS

## TOTAL GIVING TO JEFFERSON OVER THE PAST DECADE



\* Includes \$110 million contribution from the Sidney Kimmel Foundation.

THANK YOU



OFFICE OF INSTITUTIONAL ADVANCEMENT  
125 S. 9TH STREET  
SUITE 600  
PHILADELPHIA, PA 19107  
T 215-955-1635 • F 215-923-5164  
[ADVANCEMENT.JEFFERSON.EDU/MAKEAGIFT](http://ADVANCEMENT.JEFFERSON.EDU/MAKEAGIFT)



HOME OF SIDNEY KIMMEL MEDICAL COLLEGE

