

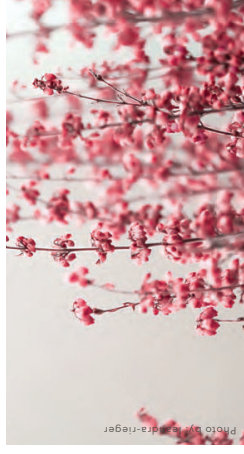
MARIL™

FRAGRANCE



MARIL™

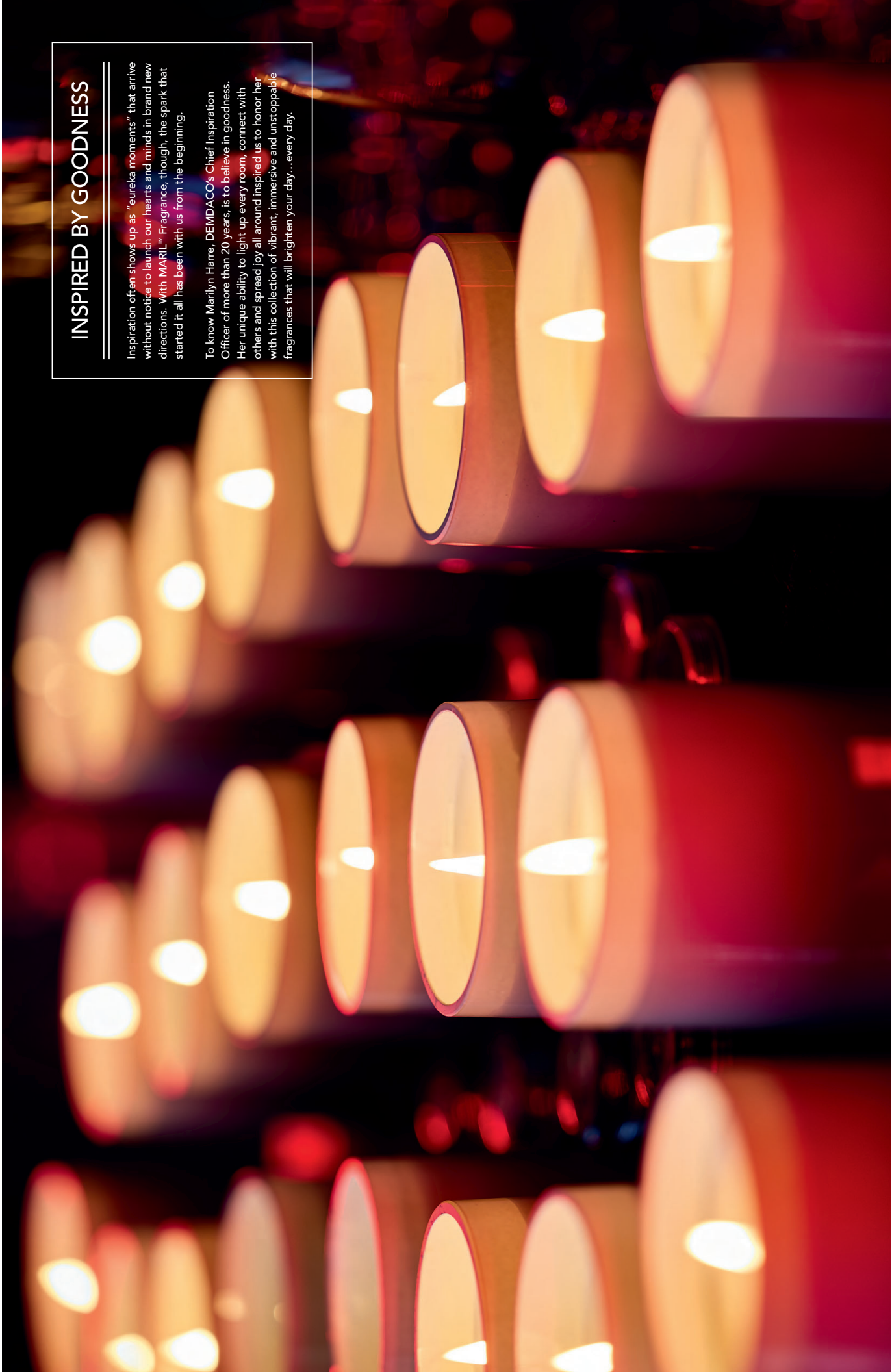
MARIL™ is inspired by goodness. It comes to life through immersive, engaging and unmatched fragrances that create a good-feeling, room-filling scent experience that calms the soul, evokes favorite memories and refreshes the spirit.



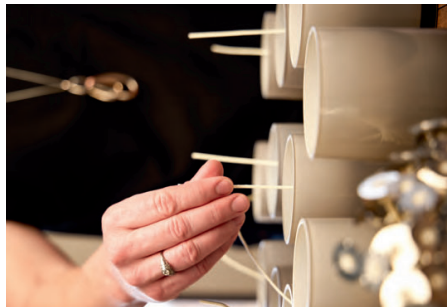
INSPIRED BY GOODNESS

Inspiration often shows up as "eureka moments," that arrive without notice to launch our hearts and minds in brand new directions. With MARLI™ Fragrance, though, the spark that started it all has been with us from the beginning.

To know Marilyn Harre, DEMDACO's Chief Inspiration Officer of more than 20 years, is to believe in goodness. Her unique ability to light up every room, connect with others and spread joy all around inspired us to honor her with this collection of vibrant, immersive and unstoppable fragrances that will brighten your day...every day.



IT JUST MAKES PERFECT SCENTS



From partnerships with internationally renowned fragrance houses and second-to-none, domestic manufacturing – to ethically sourced, sustainably harvested ingredients and environmentally responsible materials – MARIL™ was thoughtfully and intentionally created to deliver a more perfect sensory experience.



THE MARIL™ PROMISE

Each of our exclusive fragrances has been masterfully crafted to provide an exceptional scent experience.

The MARIL™ Promise for your shoppers ensures that every product will fill the room with fragrance – or we will replace it.



MAKING SCENTS OF IT ALL

Roses from France, citruses from Asia and vetiver from Madagascar – MARIL™ has searched the world over for the most premium ingredients available to craft uniquely immersive and room-filling scents that refresh, invigorate and make your home exactly the place you want it to be.

HIMALAYAN CITRUS

Fragrance Notes:

Top Notes: Pink Pomelo, Blood Orange, Mandarin
Mid Notes: Red Currant, Nectarine, Lily of the Valley
Base Notes: Raspberry Sugar, White Musk

ROSE + LEATHER

Fragrance Notes:

Top Notes: Sweet Peony Dew, White Smoke
Mid Notes: Black Rose, Rose De Mai, Black Leather,
Rose Centifolia
Base Notes: Desert Patchouli, Smoky Oud, Incense

CLEAR BLUE WATER

Fragrance Notes:

Top Notes: Marine, Water Accord, Lavandin
Mid Notes: Cyclamen, Freesia, Dewy Leaves,
Muguet
Base Notes: Rose, Ozone, Musk

VETIVER + TIMUR PEPPER

Fragrance Notes:

Top Notes: White Grapefruit, Pomelo Leaves, Citron
Mid Notes: Juniper Berry, Timur Pepper, Shiso
Base Notes: Mineral Musk, Texan Cedarwood

LAVENDER + WHITE SAGE

Fragrance Notes:

Top Notes: Zesty Lemon, Sparkling Citrus,
Italian Bergamot
Mid Notes: Native Sage, Blossoming Lavender,
Garden Thyme
Base Notes: Sugared Musk, White Woods

WHITE OAK + CASHMERE

Fragrance Notes:

Top Notes: Roman Chamomile,
French Lavender, Freshly-Cut Cedar
Mid Notes: Bourbon Vanilla, Creamy,
Sandalwood, Tonka Bean
Base Notes: Sparkling Amber, Rich Oak,
Cashmere Musk

SMOKED WOODS

Fragrance Notes:

Top Notes: Forest Aldehydes, Crisp Air,
Spiced Bourbon
Mid Notes: Frankincense, Fir Balsam, Leather
Base Notes: Cade, Smoked Woods, Pine Resin

LOUD + EARTH

Fragrance Notes:

Top Notes: Green, Ozone, Soft Marine
Mid Notes: Jasmine, Rose, Amber
Base Notes: Sandalwood, Cedarwood,
Patchouli, Musk

FRESH CUT FLOWERS

Fragrance Notes:

Top Notes: Orange, Grapefruit, Apple, Cut Greens
Mid Notes: Lily of the Valley, Freesia,
Hyacinth, Galbanum, Carnation, Lily
Base Notes: Moss, Sandalwood, Cedarwood,
Violet

PINK POMELO + ALOE

Fragrance Notes:

Top Notes: Pink Pomelo, Aloe Vera
Mid Notes: Desert Blooms, Cucumber, Water
Base Notes: Raw Cane Sugar, Cloud Musk



VETIVER + TIMUR PEPPER

When we've yet to visit exotic destinations, we dream of the adventures we'd go on while there – that's our Vetiver + Timur Pepper. The woody green notes complement the spicy aromatic bouquet of Timur pepper with shiso leaf, making this fragrance lush and complete.

Vetiver Root, Shiso Leaves, Spicy Timur Pepper



Fragrance Notes:

Top Notes: White Grapefruit, Pomelo Leaves, Citron
Mid Notes: Juniper Berry, Timur Pepper, Shiso
Base Notes: Mineral Musk, Texan Cedarwood



WATCH THE
STORY BEHIND
VETIVER



WATCH THE
STORY BEHIND
TIMUR PEPPER



MARIL

CRAFTED IN THE USA

EST.
2022

VETIVER + TIMUR PEPPER

8

INSPIRED BY: *MARIL N* (226 g) OZ

FRESH CUT FLOWERS

Springtime: when the flowers are busy dancing in the wind and the amber sun lights up the earth – that's our Fresh Cut Flowers. It's the enjoyment of assembling an arrangement of various florals, plus aromas of earthy moss and sandalwood.

Lush Cut Greens, Riot of Florals, Warm Woods



Fragrance Notes:

Top Notes: Orange, Grapefruit, Apple, Cut Greens
 Mid Notes: Lily of the Valley, Freesia, Hyacinth, Galbanum, Carnation, Lily
 Base Notes: Moss, Sandalwood, Cedarwood, Violet



MARIL		CRAFTED IN THE USA		EST. 2022
FRESH CUT FLOWERS		INSPIRED BY: <i>Mandi N.</i>		4 OZ
				(113 g)

ROSE + LEATHER

Classic, complex and more full of character than a black and white film noir – that's our Rose + Leather. For a modern twist, smoky oud and incense add depth to the timeless, beloved scent of roses.

Rose Centifolia, Black Leather, Smoky Incense



Fragrance Notes:

Top Notes: Sweet Peony Dew, White Smoke
Mid Notes: Black Rose, Rose De Mai, Black Leather, Rose Centifolia
Base Notes: Desert Patchouli, Smoky Oud, Incense



WATCH THE
STORY BEHIND
CENTIFOLIA ROSE



MARIL

CRAFTED IN THE USA

ROSE + LEATHER

INSPIRED BY: *Marnie N.* (226 g)

EST. 2022

8

OZ

HIMALAYAN CITRUS

Scent that takes you back to the beginning and honors the origins of all things citrus fruits – that’s our Himalayan Citrus. Notes of red currant and a woody base thoughtfully balance out the bright and bursting citrus combo.

Warm Citrus, Red Currant, White Woods



Fragrance Notes:

Top Notes: Pink Pomelo, Blood Orange, Mandarin
 Mid Notes: Red Currant, Nectarine, Lily of the Valley
 Base Notes: Raspberry Sugar, White Musks



MARIL	CRAFTED IN THE USA	EST. 2022
	HIMALAYAN CITRUS	8 OZ
INSPIRED BY: <i>Mandi A.</i>		(226 g)

FRAGRANCE FOR EVERY SHOPPER

MARIL™ Fragrance is available in five distinct product formats that were purposefully designed for every shopper. All of our fragrances are available to order in every format we offer.



CLEAR BLUE WATER



PINK POMELO + ALOE



LAVENDER + WHITE SAGE



HIMALAYAN CITRUS



VETIVER + TIMUR PEPPER



OUD + EARTH



SMOKED WOODS



WHITE OAK + CASHMERE



FRESH CUT FLOWERS



8 oz POURED CANDLE

The MARIL™ custom blown glass vessel was thoughtfully designed to elevate and incorporate into any home décor style. Each comes packaged in a gift box, ready to give or treat yourself and can be upcycled or recycled after use.

EST. 2022

70+ HOURS



NEW ▼
1008170006 Poured Candle - Lavender + White Sage (8 oz.)
 \$15.00 ea. Min: 6
 Burn time: 70 hrs. Notes of French Lavender, Native White Sage, Cedarwood.
 Size: 3.25" dia. x 3.5" Hg. GB Season: E
 Materials: soy wax blend, glass, paper cotton wick

MARIL
 LAVENDER + WHITE SAGE
 FRAGRANCED CANDLE
 8 oz | 228 g

NEW ▼
1008170009 Poured Candle - Smoked Woods (8 oz.)
 \$15.00 ea. Min: 6
 Burn time: 70 hrs. Notes of Forest Aldehydes, Fir Balsam, Smoky Cedar.
 Size: 3.25" dia. x 3.5" Hg. GB Season: E
 Materials: soy wax blend, glass, paper cotton wick

NEW ▼
1008170008 Poured Candle - Pink Pomeelo + Aloe (8 oz.)
 \$15.00 ea. Min: 6
 Burn time: 70 hrs. Notes of Pink Pomeelo, Succulent Aloe, Cucumber Water.
 Size: 3.25" dia. x 3.5" Hg. GB Season: E
 Materials: soy wax blend, glass, paper cotton wick

NEW ▼
1008170010 Poured Candle - White Oak + Cedar (8 oz.)
 \$15.00 ea. Min: 6
 Burn time: 70 hrs. Notes of Elderbert Vanilla, Rich Sandalwood, Cashmere Musk.
 Size: 3.25" dia. x 3.5" Hg. GB Season: E
 Materials: soy wax blend, glass, paper cotton wick

NEW ▼
1008170007 Poured Candle - Fresh Cut Flowers (8 oz.)
 \$15.00 ea. Min: 6
 Burn time: 70 hrs. Notes of Lush Cut Greens, Rot of Florals, Warm Woods.
 Size: 3.25" dia. x 3.5" Hg. GB Season: E
 Materials: soy wax blend, glass, paper cotton wick

NEW ▼
1008170005 Poured Candle - Out + Dzone, Out Wood.
 \$15.00 ea. Min: 6
 Burn time: 70 hrs. Notes of Soft Marine, Dzone, Out Wood.
 Size: 3.25" dia. x 3.5" Hg. GB Season: E
 Materials: soy wax blend, glass, paper cotton wick

NEW ▼
1008170004 Poured Candle - Velvet + Shiso Leaves, Spicy Timur Pepper.
 \$15.00 ea. Min: 6
 Burn time: 70 hrs. Notes of Velvet Root, Red Currant, White Woods.
 Size: 3.25" dia. x 3.5" Hg. GB Season: E
 Materials: soy wax blend, glass, paper cotton wick

NEW ▼
1008170003 Poured Candle - Clear Blue Water (8 oz.)
 \$15.00 ea. Min: 6
 Burn time: 70 hrs. Notes of Water Accords, Dewy Leaves, Fresh Ozone.
 Size: 3.25" dia. x 3.5" Hg. GB Season: E
 Materials: soy wax blend, glass, paper cotton wick

NEW ▼
1008170002 Poured Candle - Rose + Leather (8 oz.)
 \$15.00 ea. Min: 6
 Burn time: 70 hrs. Notes of Rose Centifolia, Black Leather, Smoky Incense.
 Size: 3.25" dia. x 3.5" Hg. GB Season: E
 Materials: soy wax blend, glass, paper cotton wick

NEW ▼
1008170001 Poured Candle - Himalayan Citrus (8 oz.)
 \$15.00 ea. Min: 6
 Burn time: 70 hrs. Notes of Warm Citrus, Red Currant, White Woods.
 Size: 3.25" dia. x 3.5" Hg. GB Season: E
 Materials: soy wax blend, glass, paper cotton wick

2.6 oz WAX MELT

Our unique melts, perfect for mixing and matching, are made from a premium soy wax blend and specially designed to liquify and diffuse fragrance quickly. Wax melts are easy and convenient to use in homes with children and pets, dorm rooms and classrooms, and can be turned on and off as needed without affecting peak scent performance.



EST. 2022

30+
HOURS

NEW! ▼
1008170039 Wax Melt – Smoked Woods
 (2.6 oz.)
 \$4.50 ea. Min: 6
 Burn time: 30 hrs. Notes of Forest Aldehydes, Fir Balsam, Smoky Cedar.
 Size: 3.5" w. x 5" d x 6.75" h Pkg: GBW Season-E
 Materials: soy wax blend

NEW! ▼
1008170037 Wax Melt – Fresh Cut Flowers
 (2.6 oz.)
 \$4.50 ea. Min: 6
 Burn time: 30 hrs. Notes of Lush Cut Greens, Root of Florals, Warm Woods.
 Size: 3.5" w. x 5" d x 6.75" h Pkg: GBW Season-E
 Materials: soy wax blend

NEW! ▼
1008170034 Wax Melt – Velvetier + Timur
 (2.6 oz.)
 \$4.50 ea. Min: 6
 Burn time: 30 hrs. Notes of Velvetier Root, Shiso Leaves, Spicy Timur Pepper.
 Size: 3.5" w. x 5" d x 6.75" h Pkg: GBW Season-E
 Materials: soy wax blend

NEW! ▼
1008170031 Wax Melt – Himalayan Citrus
 (2.6 oz.)
 \$4.50 ea. Min: 6
 Burn time: 30 hrs. Notes of Warm Citrus, Red Currant, White Woods.
 Size: 3.5" w. x 5" d x 6.75" h Pkg: GBW Season-E
 Materials: soy wax blend

NEW! ▼
1008170038 Wax Melt – Pink Pomelo + Aloe
 (2.6 oz.)
 \$4.50 ea. Min: 6
 Burn time: 30 hrs. Notes of Pink Pomelo, Succulent Aloe, Cucumber Water.
 Size: 3.5" w. x 5" d x 6.75" h Pkg: GBW Season-E
 Materials: soy wax blend

NEW! ▼
1008170035 Wax Melt – Oud + Earth
 (2.6 oz.)
 \$4.50 ea. Min: 6
 Burn time: 30 hrs. Notes of Soft Marine, Ozone, Oud Wood.
 Size: 3.5" w. x 5" d x 6.75" h Pkg: GBW Season-E
 Materials: soy wax blend

NEW! ▼
1008170032 Wax Melt – Rose + Leather
 (2.6 oz.)
 \$4.50 ea. Min: 6
 Burn time: 30 hrs. Notes of Rose Centifolia, Black Leather, Smoky Incense.
 Size: 3.5" w. x 5" d x 6.75" h Pkg: GBW Season-E
 Materials: soy wax blend

NEW! ▼
1008170040 Wax Melt – White Oak + Cashmere
 (2.6 oz.)
 \$4.50 ea. Min: 6
 Burn time: 30 hrs. Notes of Bourbon Vanilla, Rich Sandalwood, Cashmere Musk.
 Size: 3.5" w. x 5" d x 6.75" h Pkg: GBW Season-E
 Materials: soy wax blend

NEW! ▼
1008170036 Wax Melt – Lavender + White
 (2.6 oz.)
 \$4.50 ea. Min: 6
 Burn time: 30 hrs. Notes of French Lavender, Native White Sage, Cedarwood.
 Size: 3.5" w. x 5" d x 6.75" h Pkg: GBW Season-E
 Materials: soy wax blend

NEW! ▼
1008170033 Wax Melt – Clear Blue Water
 (2.6 oz.)
 \$4.50 ea. Min: 6
 Burn time: 30 hrs. Notes of Water Accord, Dewy Leaves, Fresh Ozone.
 Size: 3.5" w. x 5" d x 6.75" h Pkg: GBW Season-E
 Materials: soy wax blend



4 oz TRAVEL CANDLE

This custom-designed and metal lidded vessel adds a modern sophistication wherever it is placed and allows you to take your favorite fragrance with you, while keeping the candle dust-free when not in use.

EST.
2022

35+
HOURS



NEW! ▼
1008170013 Travel Tin Candle – Clear Blue Water (4 oz.)
 \$7.50 ea. Min: 6
 Burn time: 35 hrs. Notes of Water Accord, Dewy Leaves, Fresh Ozone.
 Size: 3.25" dia. x 1.5" Hg. BP Season: E
 Materials: soy wax blend, tin, paper cotton wick



NEW! ▼
1008170018 Travel Tin Candle – Smoked Woods + Aloe (4 oz.)
 \$7.50 ea. Min: 6
 Burn time: 35 hrs. Notes of Forest Aldehydes, Fir Balsam, Smoky Cade.
 Size: 3.25" dia. x 1.5" Hg. BP Season: E
 Materials: soy wax blend, tin, paper cotton wick



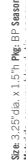
NEW! ▼
1008170020 Travel Tin Candle – Lavender + Cashmere (4 oz.)
 \$7.50 ea. Min: 6
 Burn time: 35 hrs. Notes of French Lavender, Native White Sage, Cedarwood.
 Size: 3.25" dia. x 1.5" Hg. BP Season: E
 Materials: soy wax blend, tin, paper cotton wick



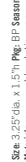
NEW! ▼
1008170020 Travel Tin Candle – White Oak + Cashmere (4 oz.)
 \$7.50 ea. Min: 6
 Burn time: 35 hrs. Notes of Bourbon Vanilla, Rich Sandalwood, Cashmere Musk.
 Size: 3.25" dia. x 1.5" Hg. BP Season: E
 Materials: soy wax blend, tin, paper cotton wick



NEW! ▼
1008170018 Travel Tin Candle – Pink Pomelo + Aloe (4 oz.)
 \$7.50 ea. Min: 6
 Burn time: 35 hrs. Notes of Pink Pomelo, Succulent Aloe, Cucumber Water.
 Size: 3.25" dia. x 1.5" Hg. BP Season: E
 Materials: soy wax blend, tin, paper cotton wick



NEW! ▼
1008170015 Travel Tin Candle – Oak + Earth (4 oz.)
 \$7.50 ea. Min: 6
 Burn time: 35 hrs. Notes of Soft Marine, Ozone, Oak Wood.
 Size: 3.25" dia. x 1.5" Hg. BP Season: E
 Materials: soy wax blend, tin, paper cotton wick



NEW! ▼
1008170012 Travel Tin Candle – Rose + Leather (4 oz.)
 \$7.50 ea. Min: 6
 Burn time: 35 hrs. Notes of Rose Centifolia, Black Leather, Smoky Incense.
 Size: 3.25" dia. x 1.5" Hg. BP Season: E
 Materials: soy wax blend, tin, paper cotton wick



NEW! ▼
1008170017 Travel Tin Candle – Fresh Cut Flowers (4 oz.)
 \$7.50 ea. Min: 6
 Burn time: 35 hrs. Notes of Lust, Cut Greens, Rot of Florals, Warm Woods.
 Size: 3.25" dia. x 1.5" Hg. BP Season: E
 Materials: soy wax blend, tin, paper cotton wick



NEW! ▼
1008170014 Travel Tin Candle – Vetiver + Vetiver (4 oz.)
 \$7.50 ea. Min: 6
 Burn time: 35 hrs. Notes of Vetiver Root, Shiso Leaves, Spicy Trinar Pepper.
 Size: 3.25" dia. x 1.5" Hg. BP Season: E
 Materials: soy wax blend, tin, paper cotton wick



NEW! ▼
1008170011 Travel Tin Candle – Himalayan Citrus (4 oz.)
 \$7.50 ea. Min: 6
 Burn time: 35 hrs. Notes of Warm Citrus, Red Currant, White Woods.
 Size: 3.25" dia. x 1.5" Hg. BP Season: E
 Materials: soy wax blend, tin, paper cotton wick



CRAFTED IN THE USA
LAVENDER + WHITE SAGE
 4 oz (113g)
 MARIL
 INSPIRED BY The Good A

CRAFTED IN THE USA
WHITE OAK + CASHMERE
 4 oz (113g)
 MARIL
 INSPIRED BY The Good A

CRAFTED IN THE USA
CLEAR BLUE WATER
 4 oz (113g)
 MARIL
 INSPIRED BY The Good A

1.75 oz DEMI TRAVEL CANDLE

This unique sized, demi tin was made for shoppers to mix and match their own fragrances – perfect for creating unique sets and discovering new scents. Features a custom design that allows you to take your favorite fragrance with you, while keeping the candle dust-free when not in use.

EST. 2022

10+ HOURS



NEW ▼
1008170059 Demi Candle Tin – Smoked Woods
 (1.75 oz.)
 \$4.50 ea. Min: 6
 Burn time: 10 hrs. Notes of Forest Aldehydes, Fir Balsam, Smoky Card.
 Size: 2.75"dia x 1.1" Pkg. BP Season: E
 Materials: soy wax blend, tin, paper cotton wick

NEW ▼
1008170058 Demi Candle Tin – Lavender + Water (1.75 oz.)
 \$4.50 ea. Min: 6
 Burn time: 10 hrs. Notes of French Lavender, Native White Sage, Cedarwood.
 Size: 2.75"dia x 1.1" Pkg. BP Season: E
 Materials: soy wax blend, tin, paper cotton wick

NEW ▼
1008170053 Demi Candle Tin – Clear Blue Water (1.75 oz.)
 \$4.50 ea. Min: 6
 Burn time: 10 hrs. Notes of Water Accords, Dewy Leaves, Fresh Ozone.
 Size: 2.75"dia x 1.1" Pkg. BP Season: E
 Materials: soy wax blend, tin, paper cotton wick

NEW ▼
1008170058 Demi Candle Tin – Pink Pomeio + Aloe (1.75 oz.)
 \$4.50 ea. Min: 6
 Burn time: 10 hrs. Notes of Pink Pomeio, Succulent Aloe, Cucumber Water.
 Size: 2.75"dia x 1.1" Pkg. BP Season: E
 Materials: soy wax blend, tin, paper cotton wick

NEW ▼
1008170055 Demi Candle Tin – Oud + Earth (1.75 oz.)
 \$4.50 ea. Min: 6
 Burn time: 10 hrs. Notes of Soft Marine, Ozone, Oud Wood.
 Size: 2.75"dia x 1.1" Pkg. BP Season: E
 Materials: soy wax blend, tin, paper cotton wick

NEW ▼
1008170052 Demi Candle Tin – Rose + Leather (1.75 oz.)
 \$4.50 ea. Min: 6
 Burn time: 10 hrs. Notes of Rose Centifolia, Black Leather, Smoky Incense.
 Size: 2.75"dia x 1.1" Pkg. BP Season: E
 Materials: soy wax blend, tin, paper cotton wick

NEW ▼
1008170057 Demi Candle Tin – Fresh Cut Flowers (1.75 oz.)
 \$4.50 ea. Min: 6
 Burn time: 10 hrs. Notes of Lush Cut Greens, Riot of Flowers, Warm Woods.
 Size: 2.75"dia x 1.1" Pkg. BP Season: E
 Materials: soy wax blend, tin, paper cotton wick

NEW ▼
1008170054 Demi Candle Tin – Vetiver + Timur (1.75 oz.)
 \$4.50 ea. Min: 6
 Burn time: 10 hrs. Notes of Vetiver Root, Shiso Leaves, Spicy Timur Pepper.
 Size: 2.75"dia x 1.1" Pkg. BP Season: E
 Materials: soy wax blend, tin, paper cotton wick

NEW ▼
1008170051 Demi Candle Tin – Himalayan Citrus (1.75 oz.)
 \$4.50 ea. Min: 6
 Burn time: 10 hrs. Notes of Warm Citrus, Red Currant, White Woods.
 Size: 2.75"dia x 1.1" Pkg. BP Season: E
 Materials: soy wax blend, tin, paper cotton wick

NEW ▼
1008170060 Demi Candle Tin – White Oak + Chamere (1.75 oz.)
 \$4.50 ea. Min: 6
 Burn time: 10 hrs. Notes of Bourbon Vanilla, Rich Sandalwood, Chamere Musk.
 Size: 2.75"dia x 1.1" Pkg. BP Season: E
 Materials: soy wax blend, tin, paper cotton wick



.5 fl oz ULTRASONIC DIFFUSER OIL

Powerfully fragrant, our ultrasonic oil blends are specially formulated to vaporize throughout the room. Simply add a few drops of oil to create a scent experience that engages the senses. Customize the intensity of your fragrance by adjusting the number of drops used with the included, easy-to-use dropper.

EST. 2022

15 mL



NEW!
1008170045 Ultrasonic Diffuser Oil - Oud + Earth (1.5 oz.)
 \$8.00 ea. Min: 6
 Notes of Soft Marine, Citrus, Oud Wood.
 Size: 1.25" dia. x 3.5" Hg. GBW Season: E
 Materials: fragrance oil, glass, dropper

NEW!
1008170049 Ultrasonic Diffuser Oil - Smoked Woods (1.5 oz.)
 \$8.00 ea. Min: 6
 Notes of Forest Aldehydes, Fir Balsam, Smoky Cedar.
 Size: 1.25" dia. x 3.5" Hg. GBW Season: E
 Materials: fragrance oil, glass, dropper

NEW!
1008170050 Ultrasonic Diffuser Oil - Pink Pomelo + Aloe (1.5 oz.)
 \$8.00 ea. Min: 6
 Notes of Pink Pomelo, Succulent Aloe, Cucumber Water.
 Size: 1.25" dia. x 3.5" Hg. GBW Season: E
 Materials: fragrance oil, glass, dropper

NEW!
1008170047 Ultrasonic Diffuser Oil - Fresh Cut Flowers (1.5 oz.)
 \$8.00 ea. Min: 6
 Notes of Lush Cut Greens, Riot of Florals, Warm Woods.
 Size: 1.25" dia. x 3.5" Hg. GBW Season: E
 Materials: fragrance oil, glass, dropper

NEW!
1008170046 Ultrasonic Diffuser Oil - Citrus + Sage (1.5 oz.)
 \$8.00 ea. Min: 6
 Notes of Fresh Lavender, Nerve White Sage, Cedarwood.
 Size: 1.25" dia. x 3.5" Hg. GBW Season: E
 Materials: fragrance oil, glass, dropper

NEW!
1008170050 Ultrasonic Diffuser Oil - Notes of Bayberry, Vanilla, Rich Sandalwood, Cashmere Musk.
 \$8.00 ea. Min: 6
 Size: 1.25" dia. x 3.5" Hg. GBW Season: E
 Materials: fragrance oil, glass, dropper

NEW!
1008170044 Ultrasonic Diffuser Oil - Notes of Water Pepper (1.5 oz.)
 \$8.00 ea. Min: 6
 Notes of Water Root, Shiso Leaves, Spicy Tamar Pepper.
 Size: 1.25" dia. x 3.5" Hg. GBW Season: E
 Materials: fragrance oil, glass, dropper

NEW!
1008170043 Ultrasonic Diffuser Oil - Clear Blue Water (1.5 oz.)
 \$8.00 ea. Min: 6
 Notes of Water Accords, Dewy Leaves, Fresh Ozone.
 Size: 1.25" dia. x 3.5" Hg. GBW Season: E
 Materials: fragrance oil, glass, dropper

NEW!
1008170042 Ultrasonic Diffuser Oil - Rose + Leather (1.5 oz.)
 \$8.00 ea. Min: 6
 Notes of Rose, Centifolia, Black Leather, Smoky Incense.
 Size: 1.25" dia. x 3.5" Hg. GBW Season: E
 Materials: fragrance oil, glass, dropper

NEW!
1008170041 Ultrasonic Diffuser Oil - Himalayan Citrus (1.5 oz.)
 \$8.00 ea. Min: 6
 Notes of Warm Citrus, Red Currant, White Woods.
 Size: 1.25" dia. x 3.5" Hg. GBW Season: E
 Materials: fragrance oil, glass, dropper



8 oz POURED CANDLE TESTER

Having in-store candle testers in your merchandising display has been proven to be the #1 way shoppers discover a fragrance and the single most important tactic you can use to increase sales. Testers are also the most effective way to share new MARIL™ fragrances with customers already familiar with the brand.

Testers are identical to the 8 oz. candle without retail packaging.

HOW TO USE IN-STORE TESTERS MOST EFFECTIVELY

- Make lighting a tester a part of your everyday routine.
- Always have TWO SETS of testers for each fragrance – keeping one set unit to feature in your display.
- Light the second set, in-store, for shoppers to experience.
- Any time you receive new/fresh testers, put those in the display and use the existing testers as the ones you light.
- Rotate the fragrances you burn every day, especially on high traffic days.
- Never burn the same fragrance two days in a row.
- Create vignettes: “Fragrance of the Day” displays to maximize sales of all fragrance formats.
- Use more than one tester or melt throughout the store.

A lit candle is your silent Sales Associate!



NEW ▼
1008170068 Poured Candle Tester – Pink Pomeño + Aloe (8 oz.)
 \$9.00 ea. Min: 1

Burn time: 70 hrs. Notes of Pink Pomeño, Succulent Aloe, Cucumber Water.
 Size: 3.25”dia x 3.5”h. Pkg: CB Season E
 Materials: soy wax blend, glass, paper cotton wick



WATCH OUR TRAINING VIDEOS FOR EVEN MORE SELLING TIPS FROM OUR IN-HOUSE TEAM

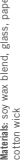
NEW ▼
1008170066 Poured Candle Tester – Lavender + White Sage (8 oz.)
 \$9.00 ea. Min: 1

Burn time: 70 hrs. Notes of French Lavender, Native White Sage, Cedar wood.
 Size: 3.25”dia x 3.5”h Pkg: CB Season E
 Materials: soy wax blend, glass, paper cotton wick



NEW ▼
1008170065 Poured Candle Tester – Vetiver + Timur Pepper (8 oz.)
 \$9.00 ea. Min: 1

Burn time: 70 hrs. Notes of Vetiver Root, Shiso Leaves, Spicy Timur Pepper.
 Size: 3.25”dia x 3.5”h Pkg: CB Season E
 Materials: soy wax blend, glass, paper cotton wick



NEW ▼
1008170067 Poured Candle Tester – Red Currant + White Woods (8 oz.)
 \$9.00 ea. Min: 1

Burn time: 70 hrs. Notes of Warm Citrus, Red Currant, White Woods.
 Size: 3.25”dia x 3.5”h Pkg: CB Season E
 Materials: soy wax blend, glass, paper cotton wick



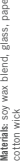
NEW ▼
1008170069 Poured Candle Tester – Fresh Out Flowers (8 oz.)
 \$9.00 ea. Min: 1

Burn time: 70 hrs. Notes of Lush Out Greens, Red of Florals, Warm Woods.
 Size: 3.25”dia x 3.5”h Pkg: CB Season E
 Materials: soy wax blend, glass, paper cotton wick



NEW ▼
1008170065 Poured Candle Tester – Oud + Earth (8 oz.)
 \$9.00 ea. Min: 1

Burn time: 70 hrs. Notes of Soft Marine, Ozone, Oud Wood.
 Size: 3.25”dia x 3.5”h Pkg: CB Season E
 Materials: soy wax blend, glass, paper cotton wick



NEW ▼
1008170062 Poured Candle Tester – Black Leather, Smoky Income (8 oz.)
 \$9.00 ea. Min: 1

Burn time: 70 hrs. Notes of Rose Centifolia, Black Leather, Smoky Income.
 Size: 3.25”dia x 3.5”h Pkg: CB Season E
 Materials: soy wax blend, glass, paper cotton wick



NEW ▼
1008170070 Poured Candle Tester – Smoked Woods (8 oz.)
 \$9.00 ea. Min: 1

Burn time: 70 hrs. Notes of Forest, Astringents, FR Balsam, Smoky Cedar.
 Size: 3.25”dia x 3.5”h Pkg: CB Season E
 Materials: soy wax blend, glass, paper cotton wick



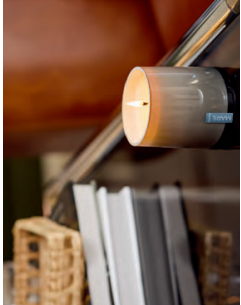
NEW ▼
1008170070 Poured Candle Tester – White Oak + Cashmere (8 oz.)
 \$9.00 ea. Min: 1

Burn time: 70 hrs. Notes of Bourbon Vanilla, Rich Sandalwood, Cashmere Musk.
 Size: 3.25”dia x 3.5”h Pkg: CB Season E
 Materials: soy wax blend, glass, paper cotton wick



NEW ▼
1008170063 Poured Candle Tester – Dewy Leaves, Fresh Ozone (8 oz.)
 \$9.00 ea. Min: 1

Burn time: 70 hrs. Notes of Water Accord, Dewy Leaves, Fresh Ozone.
 Size: 3.25”dia x 3.5”h Pkg: CB Season E
 Materials: soy wax blend, glass, paper cotton wick



MISSION

At DEMDACO, we strive to *Lift the Spirit* in consumers, in each other and in our communities.

ABOUT DEMDACO

For 25 years, DEMDACO has designed and sold products intended to *Lift the Spirit* — in times of celebration, when comfort is needed or just to put a smile on someone's face. The products we develop and distribute are chosen for their potential to help people nurture goodness in the lives of others, celebrate family and friends and encourage self-care.

Based in Leawood, Kansas, we believe that business is not merely a financial endeavor but, first and foremost, a human endeavor. This philosophy guides business decisions, informs how the company interacts with colleagues and customers, provides a framework for philanthropic work and leads efforts to create a dynamic workplace.

GENERAL INFORMATION

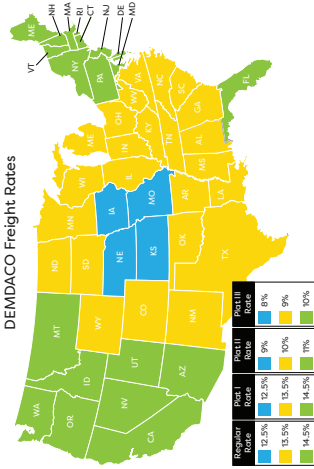
Product & Pricing Information

The MARIL™ brand is a regionally protected line available to a select number of retailers in a geographic area. Please contact your Territory Manager regarding distribution. The prices displayed in this catalog are quoted in U.S. Dollars and are only valid and effective in the United States.

Shipping Information

Delivery is limited to the 50 United States. When shipping to Alaska or Hawaii, additional shipping charges will apply. Shipping costs are based on the total dollar amount of standard product orders.

DEMDACO Freight Rates



FAQ

What types of payments do you accept?

We accept Visa, Mastercard, Discover or American Express Credit/Debit Cards. We also accept Check or Money Order made out to:

DEMDACO
P.O. Box 803314
Kansas City, MO 64180-3314

Is there a minimum order amount?

Yes. Please contact your Territory Manager for details about the minimum opening order.

What should I do if product is damaged or defective?

We are sorry to hear you have received an item that is damaged or defective. Please contact Customer Care within 30 days for a Return Authorization Number and product replacement/credit. Please note that it takes 7 to 14 business days to process credit/returns once received.

All processed returns will appear on your DEMDACO account as a credit and are eligible for use towards any current or future open invoice.

If a piece arrives damaged in the delivery process, please call Customer Care immediately. Please inspect all products prior to accepting delivery. If product appears damaged, please refuse the shipment and contact us immediately.

How do I change my order after submitting it?

We will do everything we can to accommodate your request, but please be aware that our order-fulfillment and shipping systems are designed to get orders out quickly and efficiently. Therefore, we cannot change or cancel an order once it has entered the shipping process. Please contact Customer Care for a Return Authorization Number and product replacement/credit.

Can I request images to use for marketing needs?

Yes. Please contact Customer Care at 888.336.3226.

Where does your product ship from in the US?

Our product ships from Edgerton, KS 66021.

Update how you receive your paperless documents.

Log in to your account at DEMDACOretailers.com, share your preferences with your Territory Manager or contact DEMDACO Customer Care at 888-336-3226.

What are your normal business hours?

Monday through Friday, 8 a.m. to 5 p.m. CST.

For additional information, check out our FAQ section, contact your TM or call our Customer Care team. We are happy to assist you!

MAIL:

DEMDACO
Attn: Customer Care
5000 W. 134th Street
Leawood, KS 66209

PHONE:

Customer Care
888.336.3226

FAX:

Attn: Customer Care
913.814.0681

EMAIL:

customer@demdaco.com

SHOWROOMS: Atlanta | Dallas | Las Vegas

CONNECT:



MARIL™

WEBSITE: MARILFRAGRANCE.COM



MARIL™

MARIL™	WWW.MARILFRAGRANCE.COM		Inspired by GOODNESS
	Purposefully crafted and packaged in the U.S.A. by:		50+ PRODUCTS WITH A PURPOSE
	EST. 2022	DEMDACO® 	