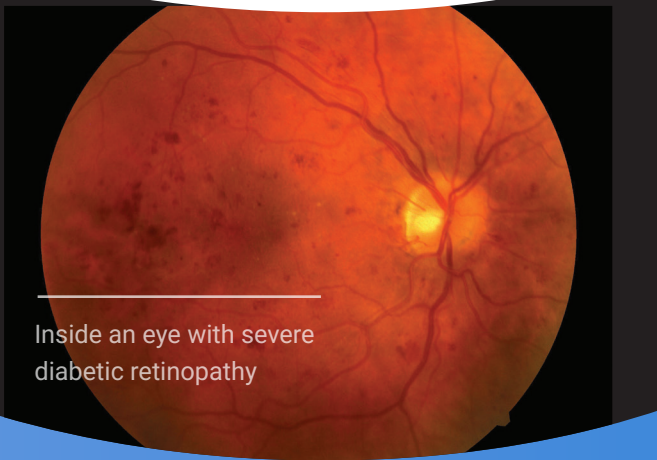


Why Do My Eyes Need To Be Tested?

Everyone with diabetes is at risk for eye diseases such as diabetic retinopathy.

These diseases have no symptoms until the later stages. If left untreated, diabetic retinopathy can cause blindness. Eye experts recommend people with diabetes have their eyes tested each year to prevent vision loss.



Inside an eye with severe
diabetic retinopathy

What Causes Diabetic Retinopathy?

Diabetic retinopathy is a complication of diabetes, where blood vessels in the back of the eye are damaged by high blood sugar levels or there is fluid build up in the macula. Most people with diabetes will develop some form of eye disease related to diabetes at some point in their lifetime.

Our Mission

To benefit patients by transforming the accessibility, affordability, equity, and quality of global healthcare through the application of technology in the medical diagnosis and treatment process.

Indications for Use

LumineticsCore is intended for use by healthcare providers to automatically detect more than mild diabetic retinopathy (mtmDR) in adults (22 years of age or older) diagnosed with diabetes who have not been previously diagnosed with diabetic retinopathy.

Warnings

- LumineticsCore does not replace a full eye exam, but it will find diabetic retinopathy that needs to be examined by an eye doctor. Patients who have blurry vision or other symptoms of vision loss should see an eye doctor right away.
- While LumineticsCore is reliable, it is not perfect. It is possible that LumineticsCore is unable to detect disease that is present, or possibly give a false positive diagnosis.



Testing for Diabetic Retinopathy



info@digitaldiagnostics.com

For complete safety information, visit
www.digitaldiagnostics.com

MSL-US-005 Rev. D





What is LumineticsCore™?

LumineticsCore™ (formerly IDx-DR) is a system that uses artificial intelligence to test for diabetic retinopathy (including macular edema).

How Does LumineticsCore Work?

1. A camera is used to take pictures of the back of the eyes.
2. The pictures are securely sent to LumineticsCore for analysis which uses artificial intelligence to find diabetic retinopathy.
3. In minimal time, LumineticsCore will produce a diagnostic report that indicates if you have diabetic retinopathy.

How Long Is The LumineticsCore Exam?

The entire exam generally takes a few minutes. In some circumstances, dilation is needed. Those LumineticsCore exams may take a little bit longer.

Understanding LumineticsCore Diagnostic Results

Negative Result

A negative diagnostic result means diabetic retinopathy was not detected and the patient does not need to see an eye care specialist at this time.

If the patient is experiencing blurred vision or any other symptoms of vision loss, the patient should see an eye care specialist right away.

Image Quality Insufficient Result

In a small number of cases, the quality of the image captured may not be sufficient for LumineticsCore to analyze and produce a diagnosis. The patient should be referred to an eye care specialist for further examination in this case.

Positive Result

A positive diagnostic result means diabetic retinopathy was detected and the patient needs to see an eye care specialist for immediate care.

If the patient is experiencing blurred vision or any other symptoms of vision loss, the patient should see an eye care specialist right away.

Only an eye care specialist can diagnose whether the patient's disease is severe enough to require treatment. This is why it is important to see an eye care specialist right away.

A positive result is also an important reminder to talk to a doctor about eye care and ways to reduce the risk of diabetic retinopathy and the risk of possible vision loss.

