

10 Signs Your LMS Needs a Modern Learning Ecosystem



Is Your Learning Platform Holding Your Team Back?

Let's be honest—when was the last time your employees actually looked forward to logging into your LMS? If you're drawing a blank, you're not alone.

Here's the uncomfortable truth: most traditional learning management systems weren't built for the way people actually learn today. They were designed for a different era—one where employees sat at desks all day, worked 9-to-5, and had patience for clunky software.

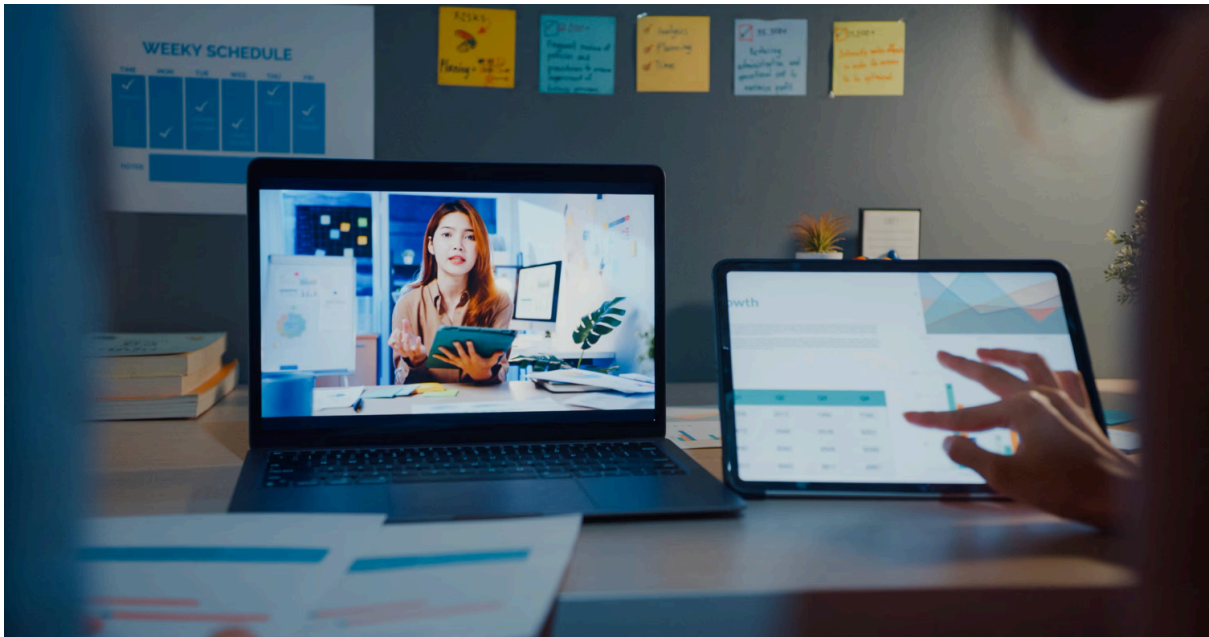
That era is over.

Today's workforce learns on the go, expects Netflix-level user experiences, and wants training that feels relevant to their actual jobs. If your LMS can't deliver that, you're not just dealing with a technology problem—you're dealing with a business problem.

The good news? There's a better way forward. It's called a modern learning ecosystem, and it transforms disconnected training into something people actually want to use.

Before we dive into solutions, let's talk about the warning signs. If even three of these sound familiar, it's time for a serious conversation about upgrading.

1. Everyone Gets the Same Content (Regardless of Their Role or Skill Level)



Picture this: Your seasoned sales manager with 10 years of experience sits through the same basic customer service training as the intern who started last week. Frustrating, right?

Here's what modern learners expect:

- Learning paths tailored to their role
- Content that matches their current skill level
- AI-powered recommendations based on their performance
- Training that evolves as they grow

The reality: If your LMS treats a CEO and an entry-level employee the same way, you're wasting everyone's time. One-size-fits-all learning is like giving everyone the same prescription glasses—it might work for a few people, but most will struggle to see clearly.

A modern learning ecosystem uses AI and personalization to deliver the right content, to the right person, at the right time. That's not futuristic thinking—that's what today's learners expect.

2. Your Learners Actively Avoid Using It

You know there's a problem when employees say things like:

- "I can't find anything in there"
- "It looks like it's from 2005"
- "It's so confusing, I gave up"

- "Do I really have to use this?"

Sound familiar? Low engagement isn't just annoying—it's expensive. Every hour an employee spends struggling with a clunky interface is an hour they're not learning or working.

What's causing the problem:

- Outdated, cluttered interfaces
- Poor navigation and search functions
- No mobile optimization
- Generic, boring layouts
- Too many clicks to get anywhere

What a modern ecosystem offers instead:

- Clean, intuitive design that feels familiar
- Powerful search that actually finds what you need
- Personalized dashboards showing relevant content
- Mobile-friendly experience across all devices
- Visual engagement that makes learning enjoyable

When the experience is simple and visually appealing, adoption happens naturally. People don't need to be forced to learn—they choose to.

3. It Doesn't Work Well on Mobile (Or at All)

Here's a question: When was the last time you personally tried accessing your LMS on your phone?

If you haven't, try it right now. We'll wait.

What you'll probably discover:

- Tiny text you need to zoom in to read
- Buttons that don't respond to taps
- Videos that won't load
- Content that cuts off the screen
- Ridiculously slow loading times
- Zero offline learning capability

Why this matters: Your employees don't spend their entire day at a desk anymore. They're commuting, traveling, working from home, or grabbing 10 minutes between meetings. If your LMS doesn't work seamlessly on mobile devices, you're losing massive amounts of potential learning time.

A modern learning ecosystem works flawlessly across smartphones, tablets, laptops, desktops, and even VR devices. Learning happens wherever your people are—not just where your IT department says it should happen.

4. Your Analytics Tell You Almost Nothing Useful

Pop quiz: Can your LMS answer these questions?

- Which skills are improving across your organization?
- Who's likely to struggle with upcoming training?
- What's the actual ROI of your learning programs?
- Which content drives real performance improvements?
- Where are learners getting stuck or dropping off?

If the answer is "not really," you're flying blind.

Old LMS platforms show you:

- Who completed the course (great, but so what?)
- Quiz scores (nice, but does it translate to job performance?)
- Login times (interesting, but not actionable)

Modern learning ecosystems provide:

- Real-time skill gap analysis
- Behavioral patterns and learning preferences
- Performance predictions based on data
- Direct links between learning and business outcomes
- ROI dashboards that make CFOs happy

Want to dive deeper into the power of analytics? Check out [EDUCAUSE's research on learning analytics](#).

Bottom line: If you can't prove your training is working, how do you justify the investment?

5. Integrating With Other Tools Is a Nightmare

Your company probably uses dozens of tools: HRMS, CRM, Slack, Microsoft Teams, Salesforce, project management apps, talent systems, and more.

The question is: Does your LMS play nice with all of them?

If connecting your LMS to other systems requires:

- Manual data uploads

- Custom coding
- IT tickets that take weeks
- Complicated workarounds
- Duplicate data entry

...then your LMS is creating bottlenecks, not solving them.

What modern integration looks like:

- Automatic data sync with HRMS
- Seamless connections to collaboration tools
- Easy content library imports
- Real-time updates across systems
- Single sign-on (SSO) for easy access

Your learning platform should fit into your ecosystem, not force you to work around it.

6. Creating New Content Takes Forever

Let's say your sales team needs training on a new product launching next month.

With an outdated LMS:

- Week 1-2: Meetings and planning
- Week 3-4: Content creation
- Week 5-6: Review and revisions
- Week 7: Technical upload and testing
- Week 8: Finally launch (by which time the product info has changed)

The problem: By the time training is ready, it's either outdated or too late to be useful.

What modern ecosystems offer:

- Rapid authoring tools that cut creation time by 70%
- AI-assisted content creation
- Ready-to-use templates
- Auto-translation for multilingual teams
- Microlearning formats for quick deployment
- One-click updates when content changes

Speed matters. The faster you can create and deploy training, the more agile your organization becomes.

7. It Can't Handle Interactive or Immersive Learning

Training doesn't have to be boring slide shows and multiple-choice quizzes. But if your LMS was built in 2010, that's probably all it can do.

Traditional LMS platforms struggle with:

- Gamified learning modules
- Interactive assessments and simulations
- Branching scenarios based on learner choices
- VR safety training experiences
- 3D simulations for complex procedures
- Augmented reality job aids

Why this matters: Modern learners (especially younger generations) expect engagement. They grew up with video games, interactive apps, and immersive experiences. Passive content doesn't cut it anymore.

A modern learning ecosystem supports the kind of interactive, immersive learning that actually sticks. When people practice in realistic scenarios, they learn better and remember longer.

8. Your Admins Spend Hours on Simple Tasks

Talk to your L&D administrators. Ask them how much time they spend:

- Manually enrolling users
- Sending reminder emails one by one
- Generating reports by copying and pasting data
- Navigating confusing admin dashboards
- Fixing technical glitches

If they're spending more time wrestling with the system than actually improving learning, your LMS is the problem.

What modern platforms provide:

- Automation for routine tasks
- AI-powered suggestions for improvements
- Smart workflows that reduce manual work
- Clean, intuitive admin dashboards
- One-click reporting with real insights

Your L&D team should be focused on strategy and learner success—not fighting with outdated technology.

9. Scaling Is a Constant Struggle



Your organization is growing. That's great! But can your LMS keep up?

Warning signs your LMS can't scale:

- System slows down when adding new users
- Crashes during peak usage times
- Can't handle multiple languages or regions
- Requires separate instances for different departments
- Adding new content breaks existing features

What you need:

- Cloud-based infrastructure that scales automatically
- Multi-language and localization support

- Secure, reliable performance regardless of size
- Easy management across global teams
- Consistent experience for all users

If your LMS can't grow with you, it's actively holding you back.

10. There's Zero AI Integration

Let's talk about the elephant in the room: artificial intelligence.

AI isn't hype anymore—it's essential. Organizations using AI in learning are already outpacing those that aren't.

What AI does in modern learning systems:

- Recommends personalized content based on skills and goals
- Assists in rapid content creation
- Maps skills across your organization
- Predicts performance issues before they happen
- Creates adaptive assessments that adjust to learner ability
- Provides behavioral insights for continuous improvement

Companies like McKinsey have extensively documented how AI transforms organizational performance. [Check out their research here.](#)

The truth: If your LMS has no AI capabilities, it's not just outdated—it's putting you at a competitive disadvantage.

What Happens When You Upgrade to a Modern Learning Ecosystem

Organizations that make the switch consistently see:

- ✓ **Higher completion rates** – Because learning is actually enjoyable
- ✓ **Faster content creation** – From months to days or even hours
- ✓ **Better engagement** – People choose to learn, not forced
- ✓ **Increased productivity** – Less time struggling, more time learning
- ✓ **Higher retention** – Both of knowledge and employees
- ✓ **Stronger business impact** – Learning that drives real results

A modern learning ecosystem isn't just a technology upgrade—it's a strategic investment in your people and your future.








For more context on what makes a learning ecosystem effective, explore [Harvard Business Publishing's perspective](#).

Ready to Make the Change?

If even a few of these signs resonated with you, it's time to have a conversation about modernizing your learning infrastructure.

At Maple Learning Solutions, we help organizations transform outdated training into modern learning ecosystems that people actually want to use.

What We Offer:

-  **AI-Powered LMS Platforms** – Intelligent systems that learn and adapt
-  **Mobile-First Learning** – Seamless experiences across all devices
-  **Gamification & Immersive Training** – Engagement that drives results
-  **Localization & Multi-Language Support** – Global reach, local relevance
-  **Learning Analytics** – Insights that prove ROI
-  **Complete Integrations** – Works with your existing systems
-  **Rapid Content Creation** – From concept to deployment in days

What Makes Maple Different:

We're not just a technology vendor. We combine deep instructional design expertise with cutting-edge technology and AI-driven personalization. Our focus isn't on features—it's on outcomes.

We help you:

- Build learning experiences people genuinely enjoy
- Drive measurable business results
- Transform skills across your organization
- Stay ahead of the competition

We work with organizations across India, the UAE, and the USA, delivering learning transformations that last.


Let's Talk About Your Learning Ecosystem

Your learners deserve better. Your business needs better. And the technology to deliver it exists right now.

The question isn't whether you should upgrade. The question is: how much longer can you afford to wait?

Ready to explore what a modern learning ecosystem could do for your organization?

 **Visit:** www.maplelearningsolutions.com

 **Email:** info@maplelearningsolutions.com

 **Let's talk:** Schedule a free consultation to discuss your learning challenges