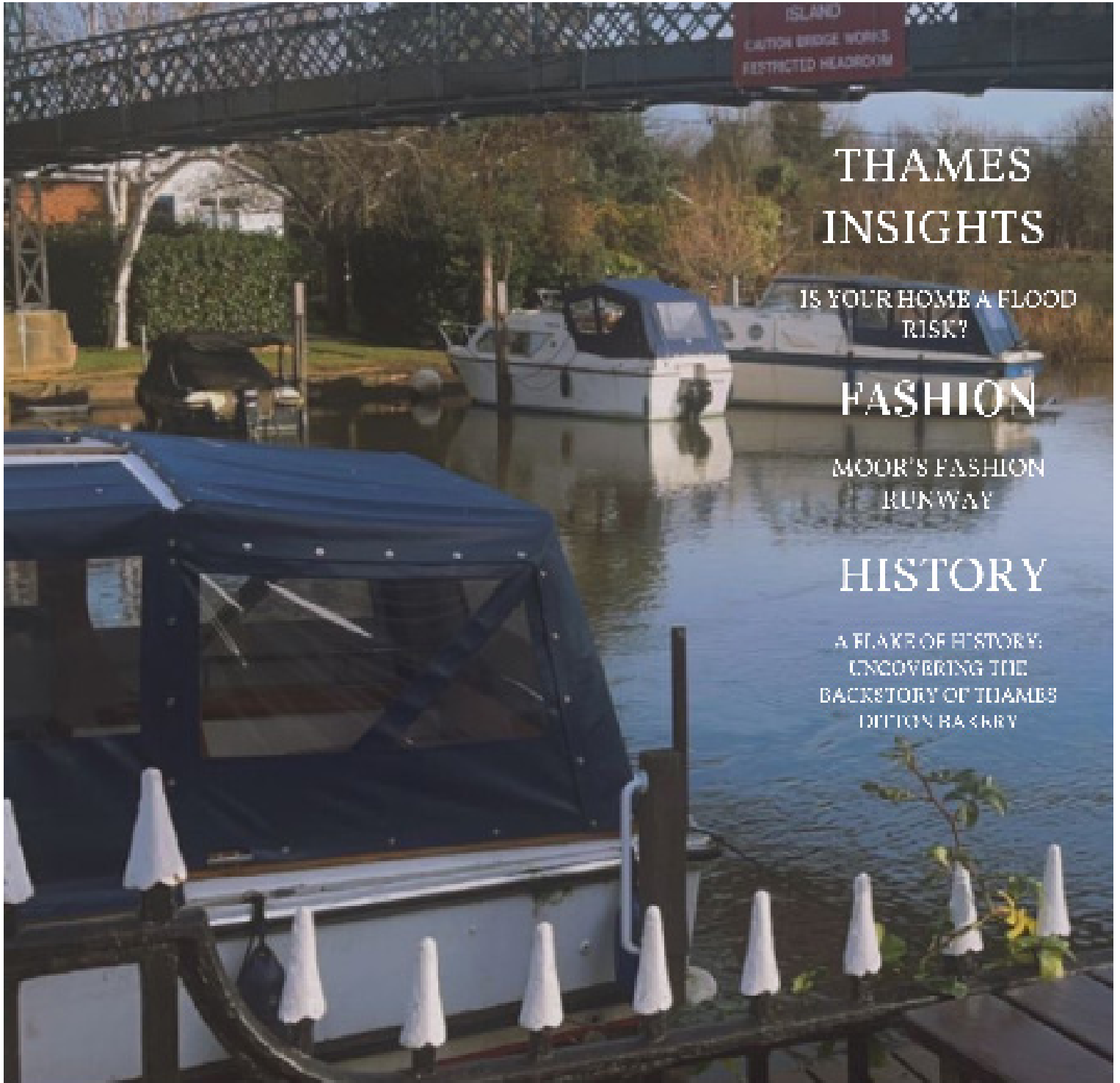


# MOOR.

A L I F E S T Y L E M A G A Z I N E



## THAMES INSIGHTS

IS YOUR HOME A FLOOD  
RISK?

## FASHION

MOOR'S FASHION  
RUNWAY

## HISTORY

A FLAKE OF HISTORY:  
UNCOVERING THE  
BACKSTORY OF THAMES  
DITTON BACKRY

# CONTENTS

## January - March

### Gallery

Thames Ditton

Eel Pie Island

### Thames Insights

Moor's Fashion Picks

Moors Top Book Pick

Is Your House A Flood Risk?

Safety measures against floods

Safe Zone Check List

What they dont tell you about moving to a Thames Island

Living on a thames island: a double-edged sword



Cover Look Thames Ditton in spring,

### Island Cuisines

The Mystery of La Fontana

### History

Sound of The Sixties

Thames Ditton Bakery

A Flake of History: Uncovering the backstory of Thames Ditton Bakery

### Games Section



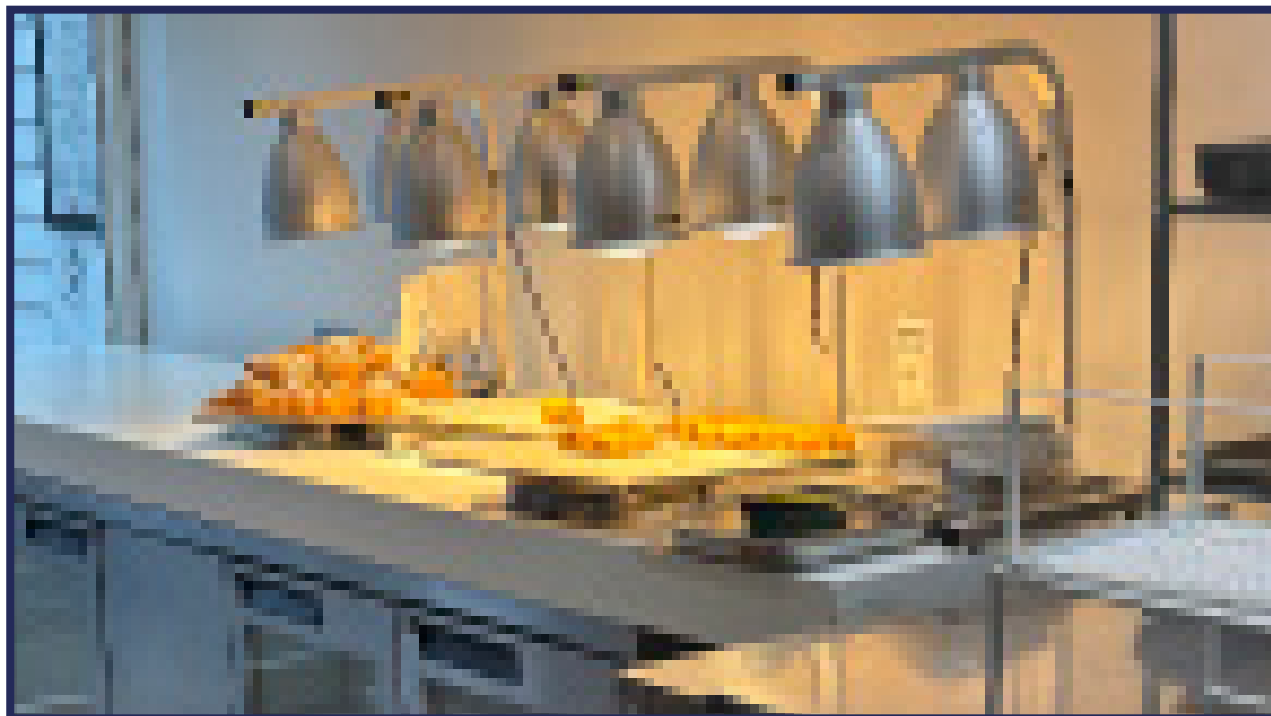
AD



# National Croissant Day

January 30th 2025

Treat yourself at your local bakery



Thames Ditton Bakery- Photograph by Dylan Gerard

## A FLAKE OF HISTORY: UNCOVERING THE BACKSTORY OF THAMES DITTON BAKERY

WRITTEN BY DYLAN GERARD

Thames Ditton bakery first opened in 2022, taking over from the earlier establishment Baker Tim & the Village Pizzeria. Head Baker, or Chef as Trenga Prefers, Laurent Trenga 55, bought the establishment in May 2021 with a loan from his uncle after he was made redundant from his job as a food development manager at RHS Wisley. "It was a complete opportunity," Trenga says, "You know there was a moment in time where I did think one day I would open my own business, but I never got around to it and then one day this opportunity came up and I just grabbed it."

Trenga was not new to the world of Baking however, he had previously trained as a pastry chef at The Carlton Hotel in Cannes and regularly cooked treats for his family and friends in his free time

It wasn't easy continuing the business from the previous owners however, Thames Ditton is a small village with mostly locals who know what they like. When asking Mr Trenga how he navigated this, he said: "Business is definitely growing, and we are quite lucky with the village environment, so the thing that is good is that as long as you serve people well and have good quality, they keep coming back. It is not like a high street environment where you have a constant flow, so you really have to work hard to keep your standards up so people keep coming back, which is what we like do."

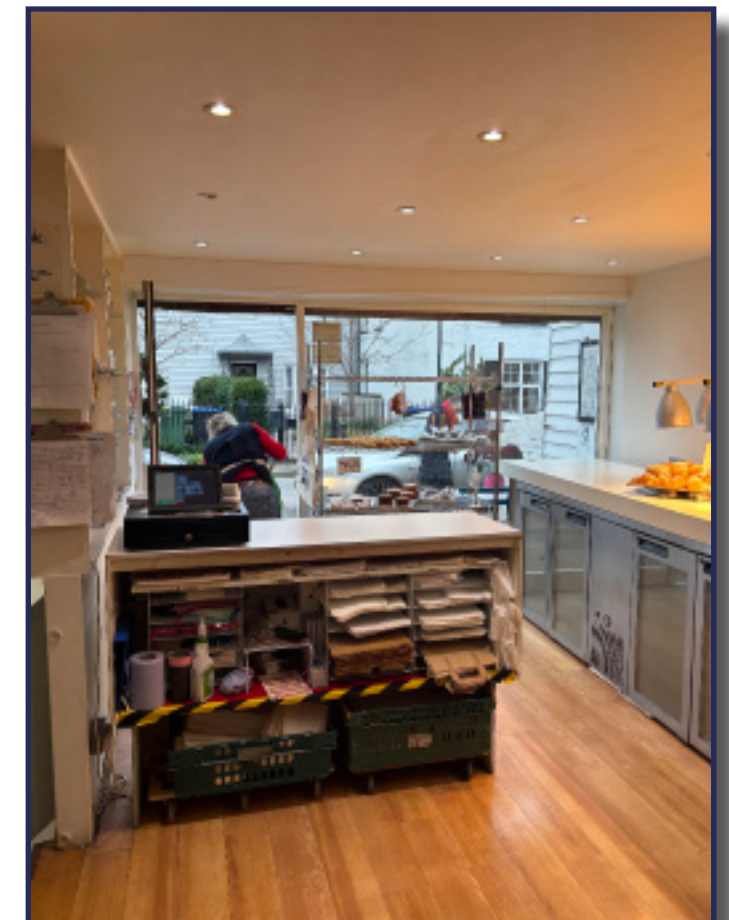
The most popular dish is "Sausage rolls by far" Trenga continues "As well as the croissants, baguettes and the house sour dough, those are constantly on the top ten."

Thames Ditton Bakery has eight bakers who work a mix of part and full time to provide for their customers; the bakery prides itself on having excellent quality at reasonable prices as well as working with other local businesses to give back to the community. Trenga adds: "It is rare these days that people want to stop and chat, we are lucky in the village that we know most people and that we all live locally but it is still important to us as a business that people feel safe here."

Previously the bakery fundraised for a new village pharmacy after the old one was closed down at the start of 2024, selling loafs at a discounted rate with proceeds going to the campaign and placing petition QR codes on their window.

Recently the bakery has partnered with Thames Ditton Boomerang Bags, a community project using recycled fabrics to create environmentally friendly tote bags. The Boomerang Sourdough uses leftover ingredients to create the loaf, saving waste and creating bread at a lower price.

The bakery documents their work daily on their Instagram page [thamesdittonbakery](#) as well as their blog [Thamesdittonbakery.com/blog](#).



Thames Ditton Bakery- Photograph by Dylan Gerard

# Sound of the Sixties



By Margot Parisi



The earliest known photo of The Rolling Stones performing at Eel Pie Island in 1963  
Photography: Alan Puzey

In tribute to the recent Grammy win for the Rolling Stones 2023 album 'Hackney Diamonds': lets date back to the rock 'n' rolling at Eel Pie Island in their early days. The legacy building of Eel Pie Hotel may be burnt to stone, but Eel Pie Island museum keeps its legendary artists of its time alive. Pete Watt gives a private tour for Moor Magazine to rundown the history...



mdlondon.  
home of award-winning hair tools

# T

“ Chisnall saw younger people better than most in those days ”

The Rolling Stones have been in the music game for as long as we can all remember. All generations share the appreciation of their gritty psychedelic rock music and probably everyone in the UK and beyond have heard of them. Everyone might not know they kickstarted their career on a small but vibrant island just in Twickenham. Lets visit the history of the time of 1960's British Blues explosion on Eel Pie Island, how it helped global superstars such as The Rolling Stones become the musical legends we know today, and the controversy for the culture shock of the iconic age.

In the early 1960s, Twickenham and Richmond defined an entire era of music history for British R & B and Rock 'n' Roll. One key venue was the Eel Pie Hotel Club, located just across the River Thames in Twickenham that we know today as Eel Pie Island. Soulful singer Rod Stewart described in his autobiography 'Rod': "You had that palm-tingling sense you were heading somewhere truly exotic... the place was its own country... the place where I really began to understand the power of rhythm and blues". Eel Pie Island Hotel opened in 1830 as a place for day-trippers to attend, even mentioned by Charles Dickens' Nicholas Nickleby. A ballroom was built for classical 'Tea Dances' traditionally. Quite funny really compared to the huge countercultural decade of the '60s. Local trumpeter Brian Rutland revived the island's popularity in 1956 bringing upbeat sounds of jazz. Within weeks, Arthur Chisnall, who worked at Kingston Antiques Emporium at the time for Michael Snapper (owner of Eel Pie Hotel) had taken over. He saw Eel Pie Hotel as the perfect venue to conduct a 'social experiment' to study trend-formers in the mid-50s after he had noticed lots of students selling out the Jazz records in the shop he worked at. a couple months of informal get togethers Eel Pie Club, known as Eelpiland was born, with famous Ken Colyer's band playing the first official gig in '56. Arthur Chisnall saw himself as a social researcher for the youngsters of the time building up genuine empathy after growing up 'illegitimate' with no father. Kind volunteer at the Eel Pie Island museum Pete Watt, who is a huge enthusiast when it comes to The Rolling Stones says: "I believe Arthur set up the place for a human experiment. He probably grew up feeling odd in the society, with no dad, so this could've felt like a charitable honour for himself too. Chisnall saw young people better than most in those days".

After a couple months of informal get togethers Eel Pie Club - known as Eelpiland - was born, with famous Ken Colyer's band playing the first official gig in '56. Arthur Chisnall saw himself as a social researcher for the youngsters of the time building up genuine empathy after growing up 'illegitimate' with no father. Kind volunteer at the Eel Pie Island museum Pete Watt, who is a huge enthusiast when it comes to The Rolling Stones says: "I believe Arthur set up the place for a human experiment. He probably grew up feeling odd in the society, with no dad, so this could've felt like a charitable honour for himself too. Chisnall saw young people better than most in those days".

Although, becoming a music promoter was not what Arthur had in mind! He originally set up the club to assist those with job applications and writing CV's, hiring professionals so people had access to talk to important people in job fields. Jack Lambert, who later worked for Chisnall praised his work saying: "You were supposed to have A-Levels not only to qualify for Harlech (education college for mature students) but also to qualify for a grant... I didn't but Arthur weaved his magic. He knew I had very little money, so he found a way to help me go there. He was the greatest enabler I have ever known".

In terms of gigs, the signing of The Rolling Stones was almost a complete accident (though a genius one). The emerging R & B groups in the early '60s began drawing fans away from Trad Jazz. Stan Piper, the humble chap who used to stamp wrists on entry recalled Arthur asking: "Where on earth is our crowd?" on a quiet evening at the club. This led them to jackpot after hearing word at the Station Hotel in Richmond, that there was a rising in popularity band calling themselves The Rolling Stones. Pete Watt explains: "They practically snatched them off their feet, pretty much saying that they must play at their club before they got too big."

their feet, pretty much saying that they must play at their club before they got too big." The Rolling Stones were actually regular visitors to Eel Pie Island already and were eager to create a musical uproar for the island. A five month residency was ensued almost straightaway for what nowadays would be considered a mere £45. Regular attender of the club, Bill Wyman recalls their first appearance as: "An optimism something good was about to happen". And something good certainly did. The borough was well and truly stoned. Mick Kashmir, a fellow attender of the gigs and one of over 80 attendees of Eelpiland interviewed by Watt for tribute to the place: "The main event I remember is seeing the Stones there in 1963. I remember saying to a friend 'bloomin' heck they're a skinny bunch of urchins', ignoring the fact we were a skinny bunch of urchins... the whole atmosphere of that time was unique." Between April and September of 1963 The Rolling Stones could be seen every Wednesday on Eel Pie Island. They did a total of 24 appearances.

As their popularity soared, it was inevitable that the intimate gigs at Eelpiland would come to an end. Their final gig was on 25th September 1963 where lead singer Mick Jagger signed off with a thank you hoping to return soon. Of course, they never did, hitting the road with bigger things. Pete explains how Chisnall recalled: "If we had realised how big they got we would have cancelled it. Never mind the hotel, the whole bloody island was overflowing... thankfully the crowd were cool-not screaming hysterically like a Beatles crowd". They still resonated a lot with the area being the first band to play at Twickenham Stadium and in 2018 on the 55th anniversary of their 9th gig they came back for another blast at the stadium. They must have never seen that coming in 1963. Pete says the museum requested for a photo with the band in the museum, though they were obviously too busy, however the talented late drummer Charlie Watts came to sign a drumhead and drumsticks. "Signing the drumsticks was very impressive in my opinion- imagine how hard that would have been!"



Replicated version of the iconic wall stars performed in front of the Eelpiland



Reconstruction of Mr Chisnall's office at the museum



Drumsticks signed by late drummer Charlie Watts in 2018



Rod Stewart at Twickenham Station 1964

came to sign a drumhead and drumsticks. "Signing the drumsticks was very impressive in my opinion- imagine how hard that would have been!" Stars like The Who, Elton John, David Bowie and Pink Floyd hosted at the gigs. It was also a regular gig for Rod "The Mod" Stewart in the days when he was starting up with his harmonica. He reflected in his early years for a documentary film called Rock 'n' Roll Island about Eel Pie Island: "Eel Pie Island was a big hang-out for me, an ancient, damp ballroom stuck in the middle of the River Thames and reached by a rickety wooden footbridge". Volunteer of the museum David Richards says: "Apparently he was a cheeky skint fellow always asking the ladies to buy him the drinks". Good way to stay rich... he better have kept that mentality up when he got his big break.

The 1960s was a decade of cultural significance we know so well. It was a transformative time marked by social changes whilst producing iconic music, fashion and art that still resonate with us all. It was an era of 'rebellious teenagers' with the younger generation (later known as baby boomers) going against everything their parents had believed: especially with music. The 2022 film 'Elvis' highlights the start of the 'rebellious mindset' in the '50s where even Elvis Presley's dancing seemed inappropriate for the times. This generational gap controversy was no different for the Eel Pie Island Club. A news article published on February 9th, 1967, mentioned the rumours of the club being bandied around drugs claiming the place the "haunt of beatniks and drug addicts". There were bids for demolition orders calling it "Hippies' Island Hotel Home is not fit to live in". Interestingly enough, the Vicar of Richmond hit out at the critics who were accusing the club encouraging drugs, underage drinking and sexual promiscuity. Rev. Derek Landreth famously said in a 1967 article: "It is the people who only hear about the going-ons at the island who kick up a fuss. Those who go and see it come away a lot happier." Even the Vicar was for the club, after all, Mr Chisnall wanted to "help close the gap between young people and authority". Another of volunteer Pete Watt's interviewees Elene Hambrook said: "Remembering how I used to lie to my parents and say I was going to the Jewish Youth Club and go see some of the best bands in the world. I should have been going to learn how to make bagels." For being such an intimate club, the small rebellious antics of the generation shows the importance of the turnaround in the culture of the previous decades.

Photography: John Rogers

## History

about the going-ons at the island who kick up a fuss. Those who go and see it come away a lot happier." Even the Vicar was for the club, after all, Mr Chisnall wanted to "help close the gap between young people and authority". Another of volunteer Pete Watt's interviewees Elene Hambrook said: "Remembering how I used to lie to my parents and say I was going to the Jewish Youth Club and go see some of the best bands in the world. I should have been going to learn how to make bagels." For being such an intimate club, the small rebellious antics of the generation shows the importance of the turnaround in the culture of the previous decades.

In September 1967, Eelpiland had to shut down due to lack of funding with the place becoming pretty run down. Bob Wagner who regularly went to gigs said: "I was told by a friend that the club had been closed because a girl went into the toilet, pulled the chain and the cistern fell on her. I don't know if it was true, but it would describe the general state of the building." Arthur Chisnall was also charged with using the premises for 'public dancing' in breach of his licence. Despite unexpected allies such as the Vicar, the doors

slammed shut for the energising and inspirational era. Attempts were made to bring back the venue and Riot Squad vocalist Caldwell Smythe took on the place naming it Barefoot's Rock Garden after the footprints stamped on the ceiling during the previous era. This was short-lived when by late 1969, the hotel was taken over a loose affiliation of alternative lifestyle seekers, which started small, but quickly got out of control. Anarchist Clifford Harper, who was a part of it, acknowledged that though it helped welcome people to the island, petty criminals and run-aways were the downfall of the hotel. In 1970, the hotel was declared unfit for human habitation and the following year everyone had to move out...or unfortunately go back home to their parents. In 1971 the Eel Pie Island hotel was no more-according to folklore, squatters destroyed the building trying to light a fire for warmth. There are speculations that previous owner Snapper had the place torched up to speed up redevelopment... I guess we'll never know.

"A great place to be in your youth... cheers to Eel Pie"

The legacy still lives on through the Eel Pie Island museum, who offer entry at £4 and private walking tours too with incredibly accommodating and passionate staff. The museum was curated by Michelle Whitby after the success of her 2013 expedition at the Stables Gallery. Whitby compares Eelpiland to Liverpool's Cavern and says it to be the birthplace for youth movement. Volunteer David Richards says: "I believe it was even bigger than the Cavern. Way bigger and more special. Where the Cavern had the Beatles, Eelpiland had all the superstars of that age I can think of. It is a special place". Today, Eel Pie Island is inhabited by a population of 120 people where artists, poets and philosophers carry on the creativity. Though, the plots are privately owned (some being fun and whacky) there are open days for Art Studios, held usually in June and December. See, still some form of art takes over the island regardless. Art never seems to be the thing to burn down over there. As of 2025, it is crazy to think how much artists and bands who performed at Eel Pie Island have accomplished and are still accomplishing. From The Rolling Stones still releasing award-winning music and even Rod Stewart playing legends slot for Glastonbury Festival 2025, it just shows the timeless history this place has with their humble beginnings. It gives hope the era will never die even if the building is gone. A frequenter of the time: "The club was a dump, but the bands were great, and it belonged to us...A great place to be in your youth, a place where I made many lifelong friends... cheers to Eel



On the right-Designed by Eel Pie Museum as tribute to The Rolling Stones returning to Twickenham exactly 55 years after one of their performances back in the 60s



# The Mystery of La Fontana

By Johnson Chibuikem Asi

Discover the story behind La Fontana, where authentic Italian cuisine meets a commitment to community, making it a cherished local gem.....



• A nice hot cup of coffee

Photograph by Johnson Asi

Creak, creak, creak—the door swings open and the delicious and enticing flavour and scent surround your senses like a gentle hug right away. You seem to be getting a taste of Italy, a bit of its rich gastronomic legacy right before you. La Fontana, the restaurant's name, translates from Italian "the fountain". This fountain releases love and warmth, so enveloping everyone in the cafe in a sense of having entered a friendly Italian house, full of laughing, happiness, and the reassuring scent of home-cooked food.

As you move further inside, the ambiance envelops you like a cozy blanket. The walls are decorated with vibrant artwork that captures the essence of Italy, and the chatter of content diners fills the air, blending seamlessly with the soft tunes of Italian music playing in the background. Sylvia, the owner of La Fontana came to the restaurant 4 years ago and changed the course of the restaurant's future.

"When I arrived at the restaurant before I took over the business, it wasn't visually appealing, and there was no business; people weren't coming," Sylvia recalls, her eyes lighting up with the memory of her journey.

The place struggled to attract customers before she arrived, often empty and hopeless. Her ambition for the café was clear when she started: she wanted it to be "a place where everyone could come and feel at home, a haven for people to unwind and escape their worries, even if just momentarily," she said. "A hearth where everyone can come to have a good time." Driven to restore the cafe, she set out to transform and reinvent its reputation. She began by revamping the shop's inside, adding vibrant colours and welcoming décor to draw more customers, therefore creating much-needed business for the deli. Incorporating aspects of her own culture, she sought to "bring a little Italy" into the room so that the restaurant would really represent her background.

Reflecting her background, Sylvia, the owner of La Fontana, made a conscious decision to create a cuisine that combines Italian culinary traditions with British flavours. This careful mix not only embraces her heritage but also enables customers to taste a wonderful range of cuisine honouring the best of both nations. The La Fontana menu offers a variety of fresh focaccia, ciabattas, many types of pasta, and cheese toasties. For every meal, the focaccia—which is cooked fresh daily, flavoured with aromatic herbs and drizzled with premium olive oil—offers a warm and enticing starter. With a crust that crumbles with every mouthful, the light, airy ciabattas highlight the classic Italian method of bread-making and are ideal for sandwiches or eaten alone.

The pasta dishes are the highlight of the menu. Every dish, from a hearty shepherd's pie-inspired pasta bake to rich, creamy carbonara that envelops the pasta in a velvety sauce, is designed to transport guests on a culinary journey that indulges the senses. A favourite British comfort meal, the cheese toasties are enhanced with gourmet cheeses and Italian-inspired fillings to create a distinctive mix that is both familiar and interesting, providing a great crunch with every mouthful.

Apart from these tantalising baked products, the pasta dishes are the highlight of the menu with their sauces reflecting both Italian classics and British touches. Every dish, from a hearty shepherd's pie-inspired pasta bake to rich, creamy carbonara that envelops the pasta in a velvety sauce, is designed to transport guests on a culinary journey that indulges the senses. A favourite British comfort meal, the cheese toasties are enhanced with gourmet cheeses and Italian-inspired fillings to create a distinctive mix that is both familiar and interesting, providing a great crunch with every mouthful and oozing melted cheese and savoury toppings.



The La Fontana community

Photograph by Johnson Asi

"The food drew me, but Sylvia was the reason I continued going." One customer notes. "Sylvia is La Fontana she is the essence and spirit of the cafe". La Fontana lives in the hearts of all its customers and the food; it is not only a place; it is a feeling of warmth and comfort, acceptance, and validation where friendships develop over shared meals and laughter fills the air.

Sylvia's life is La Fontana; she is quite happy to say it has been "my greatest achievement." She considers her journey, stating that she has developed with the restaurant, and admits that although it has been a long and stormy road full of both obstacles and victories, she would not trade it for anything.



An assortment of beverages

Photograph by Johnson Asi

Along with chilled choices like freshly squeezed orange juice and crisp apple juice that arouse their palates, guests may enjoy home-brewed coffee. The alcohol menu offers a well chosen selection of Italian wines and British ales for those looking for something a little stronger.



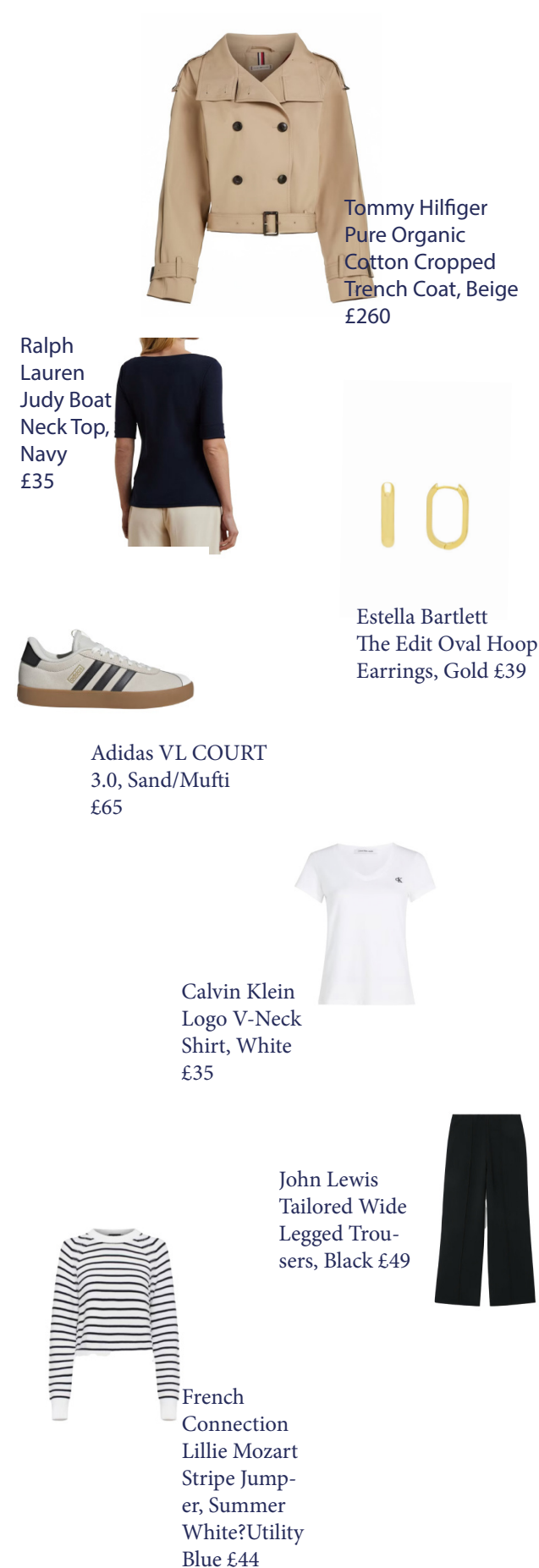
Photograph by Johnson Asi

# Moor's Fashion Runway

Written by Margot Parisi

## TIMELESS, CHIC AND SOPHISTICATED:

Margot Parisi explores the idea of Quiet Luxury in time for spring to start- perfect and fitted for a luxurious feel on your day out on a boat along the Thames- Let's go on a quest around the classic John Lewis in search for good buys to grab this spring...



Everyone can agree when the weather starts to get better, we start to feel better. But do you ever walk in your closet when you start to approach spring and think that you really need to spring clean that collection of clothes you have and update it to leave the cold winter behind? Here are some top outfits and advice that scream the trending Old Money style, which is must-have to start the day-drips along the Thames. And you won't even need to go on a money heist in order to buy most of them.

Different decades show the everchanging trend in loose-fitting to tight-fitting clothes. The noughties were all about tight fitting clothes, which was a change from the 90s, where baggier fits were becoming trendy, ranging from oversized tees to jeans. That has started to loop back in the modern day where oversized fits have become trendier again. Old Money never seems to die out with its structured, tight layout that is always going to flatter you, standing by the morals of accentuating the benefits of each one's figure.

A classic example of garments that are casual and comfy enough for a walk along the river but still anchors the elegance is a plain navy top from the Ralph Lauren section in John Lewis ranging from only £35 paired with NYDJ high rise straight jeans in the colour Quinn. Pair the look with gold accessories such as gold hoops and a pair of white and black trainers for comfiness. As spring is still too cold in the UK, top it off with a cropped trench coat, specifically with a waistband to singe in the waist, giving it that tight-fitted look. John Lewis is currently selling one from Tommy Hilfiger which matches the demographic of this style to a tea, though banks may need to be robbed or at least gift vouchers should be asked for your next birthday to feel less guilty about the big spend.

Another casual yet ideal look to spend the day visiting local pubs along the River Thames on a boat, is a fancy set-up consisting of tailored black trousers, a white tee topped with a denim jacket, and a stripe sailor-vibe sweater to pull over the shoulders over the denim jacket. This is an ideal fit that says elegance all over. Pair this with some white trainers for comfort.

there's two NEW wide plate straighteners in town...

# PHAT

# no fat

- ✓ 50mm extra-wide coated plates
- ✓ 11 temperature settings
- ✓ static reducing ionic technology
- ✓ extra-long 3m swivel cable
- ✓ heat mat included

- 43 mm wide coated plates ❌
- single temperature setting ❌
- no ionic technology ❌
- standard length swivel cable ❌
- no heat mat ❌

£129 😍

£299 😭



molondon  
great looking hair every day



Mango  
Boreal Tailored  
Waistcoat, Navy  
£22

John Lewis  
Stretch Waistband Ponte  
Trousers, Navy  
£49



Gabour  
Lindy Sling-  
back Kitten  
Heel Shoes,  
Navy  
£95



Reiss  
Campbell  
Linen Shirt,  
White  
£98



Orelia  
Organic Molten  
Bangle, Pale  
Gold  
£28

Orelia  
Ribbon Twist  
Bangle, Gold  
£20

The importance of avoiding bold colours is crucial when dressing for Quiet Luxury. Always opt for neutral colours to create a basic outfit that tailors perfectly to a high-end feel but at the same time not being too heavy and overbearing. You don't want to ruin the simplicity with a barbie pink, on an 80s style neon green.

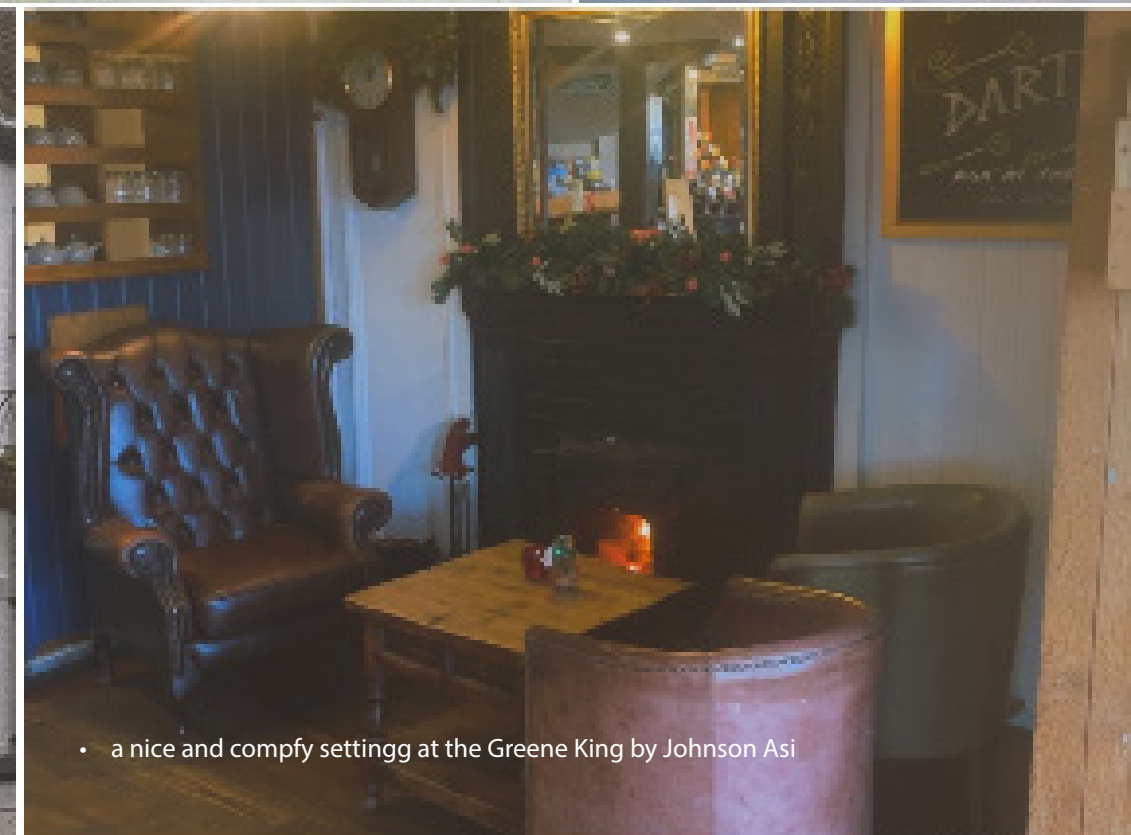
A go-to for the spring are navy, wide-legged trousers, matched with a navy waistband for the random days where London gets bearably, good weather. Accessorise it with a black and white silk scarf -if you don't have to walk far and get the luxury to perch on a boat all day-some navy kitten heels would uplift the classiness. Kitten heels have become a big moment in the fashion world in recent times and to be honest, with their cute and convenient size for the heel, there is absolutely no reason why not.

A matching white outfit is also an impeccable style to reach for to match with gold jewellery to compliment every undertone of skin. Linen clothing for spring and summer has been a big reach the past few years. Be sure to criss-cross the strands and tuck them in to your trousers, to give the smart effect with no bulk. 2025 is looking to gold bangles, to give a beautiful simplicity with these kinds of outfits.

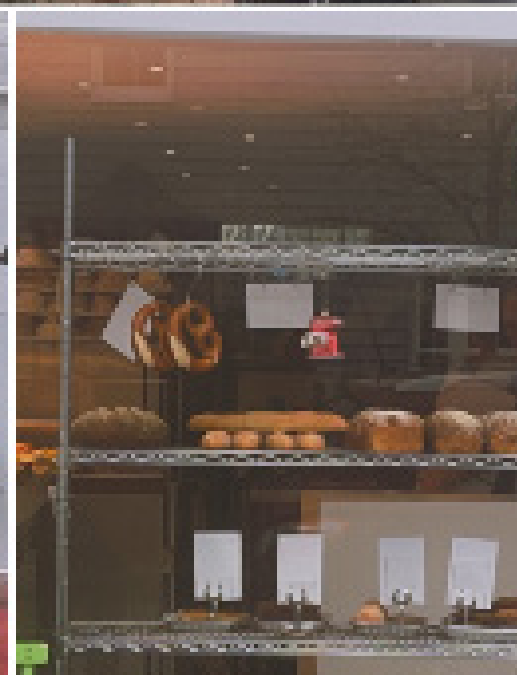


• A retro picture of the old Thames Ditton taken by Johnson Asi

• Thames Ditton high street travel guide taken by



• a nice and compfy settingg at the Greene King by Johnson Asi





# Moor Gallery

---

---

AD

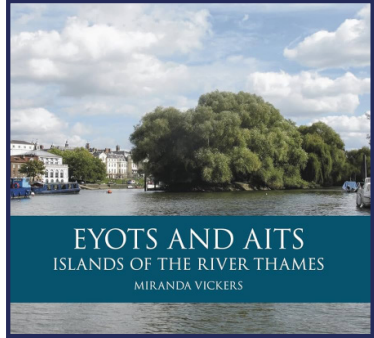


# Moor's Top Book Picks

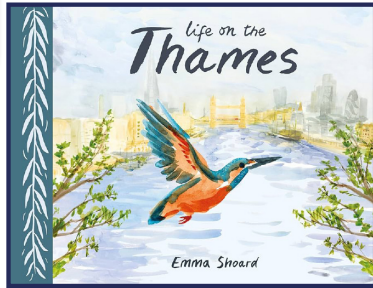
Written by Dylan Gerard

Whether you're moving, living, visiting or simply just intrested in the many Thames Islands, here are our top book picks for spring 2025.

## Eyots and Aits: Islands of the River Thames



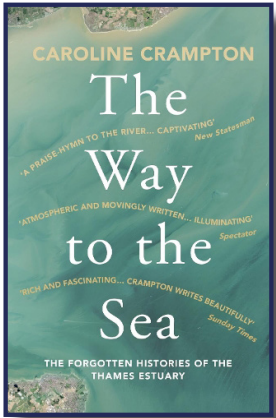
Written by Miranda Vickers and released in May 2012, Eyots and Aits: Islands of the River Thames gives a great insight into the history of both the River Thames and the 180 Islands that have been created over the years. Retailing at £19.95 This book has been loved by many and ranks 4.5 out of 5 stars on Amazon.



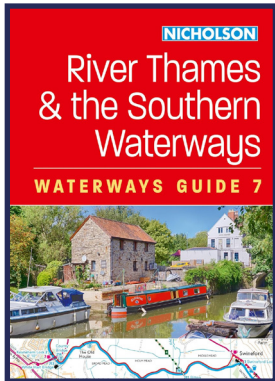
## Life on the Thames

Written by Emma Shoard and released in April 2023, Life on the Thames is an Illustrated book showcasing the wildlife along the River Thames. Spending most of her life living on the Thames, Shoard gives in depth descriptions of the animals that shes encountered. Retailing at £9.99 this is a book perfect for all ages and rated 5/5 at Waterstones.

## The Way to the Sea: The Forgotton Histories of the Thames Estuary



Written by Caroline Crampton and released in March 2020, The Way to the Sea: The Forgotton Histories of the Thames Estuary follows Crampton exploring the River Thames as she travels from a small village in Gloucestershire to where it connects to the North Sea. Retailing at £9.99 this book is perfect for people who love exploring and is rated 4.6/5 on Amazon.



## River Thames & the Southern Waterways: Waterways Guide 7

Written by Nicholson Waterways Guides and released in Febuary 2025, River Thames & Southern Waterways: Waterways Guide 7 is an essential for anyone who frequently uses the waterways between Exceter and the River Thames whether thats for boating, walking, cycling or just visiting. This guide includes up-to-date information about locks, towpaths and boating facilities, as well as detailed maps including features such as nearby pubs and places to eat or look around. Retailing at £16,99 and rating 4.8/5 on amazon this book is very practical for all.



# Is Your House A Flood Risk?

By Johnson Asi

Photo by Chris Gallagher



Photograph by Margot Parisi

Islands are beautiful and sometimes the most peaceful places to settle, but as the saying goes "There is no light without darkness'. In this instance, the darkness is the risk of flooding due to adjacency to the sea. If you live on an island, whether your house is a flood risk can shape your whole livelihood. Here I will answer the three main questions probably on your mind.

## What it means to be a flood risk?

There are lots of different ways of checking/determining if you are indeed a flood risk such as by location, incline/elevation, flood history, local weather patterns, soil type and drainage, flood alerts and insurance and resources. So in terms of location, to try to determine whether you are a flood risk, you can check coastal maps or contact your local. Hire a Professional council to see if your area has previously experienced flooding and also check to see if you live near river or any large bodies of water. Regarding elevation, the incline of your property relative to the adjacent/surrounding areas is crucial in determining whether you are a flood risk. For example, if your property is built on a hill, your risk will most likely be lower as water tends to flow downhill. However, if your property is built on an area with a significantly low incline and is situated near a river or a sewage/drainage system, you will have a higher probability of being a flood risk. You can use government resources to procure elevation data or use online mapping tools to see how your property compares to other flood-prone areas. Local authorities often have databases available to the public so people can look at the flood history of their area and specific data such as the frequency and severity to determine whether their area is flood risk. Becoming knowledgeable with local weather patterns is essential. Some regions have quite rigid weather patterns whilst others have extremely erratic weather and experience sporadic changes.

## How to determine whether you are a flood

Being a flood risk means that your area is susceptible to floods due to various factors. These include: the geographical location, weather patterns, urbanisation and climate change. Geographical location, focuses on whether you're located near rivers, lakes or coasts, as proximity to large bodies of water can increase or lower the risk of flooding in the area. Riverbanks can overflow as a result of heavy rainfall and coastal areas can be affected by high tide. Weather patterns such as large bouts of heavy rainfall storms or rapid snowmelt can increase the likelihood and probability of flooding as they can lead to flash floods. A sudden downpour can also potentially overwhelm the central drainage system causing water to accumulate rapidly and alarmingly. Urbanisation can heavily affect the flood risk level as when natural landscapes are replaced with manmade buildings and infrastructure, it causes the land to be less absorbent allowing the water to culminate. As the sea levels rise and the weather patterns more erratic, the frequency and severity of flooding also increases in turn leading to a spike in the frequency and intensity of extreme weather events such as typhoons hurricanes and tornadoes; which in their aftermath can cause heavy rainfall leading to flooding.



# Safety measures against floods

## Safe Zone Check List



Created By Johnson Asi

Living in a flood risk area requires careful and meticulous planning and proactive safety measures to ensure your wellbeing. In terms of elevation; you should place electrical appliances, heating appliances and wiring as high as possible above potential flood levels. Ensure that your home's circuit breaker panel is also elevated to prevent power from short-circuiting. Installing check valves within your household is a great preventative anti-flood measure a check valve focuses on the circulation of water and prevents backflow, keeping the water flowing in a single direction. Check valves should be installed at the beginning of pipelines, at the outlet of pumps or pressure sources, and at high and low points in elevated and horizontal pipeline. Flood insurance is essential for protecting your home and belongings from damage caused by flooding. Standard home insurance policies often don't cover flood-related damages, so having dedicated flood insurance is vital in these areas. Homeowners or Property Insurance: Ensure that your Homeowners or Property Insurance is tailored to include risks specific to your location, such as storm damage or rising sea levels. In regions prone to hurricanes or tropical storms, windstorm insurance can cover damage caused by high winds. Some areas may even require this as a separate policy. Contents Insurance protects your personal belongings, especially valuable items, against water damage, theft, or destruction during natural disasters. Travel Insurance (for evacuation needs): In extreme cases, such as hurricanes or tsunamis, having travel insurance that includes evacuation coverage can be a lifesaver, both literally and financially.

Using flood-resistant materials in construction and design minimises flood damage. When designing walls, the best material is concrete as it is water resistant and retains its structure. For floors it's best to use tiles or sealed concrete instead of carpets or wooden floors as those are absorbent. In terms of furniture and household appliances, the best move would be to anchor heavy items like refrigerators or bookshelves to walls in to prevent them from toppling or floating. Doors, windows and vents are common entry points for floodwater so to remove the risk as much as possible it's best to seal the openings with water-resistant sealants or install specialised barriers. You can also choose to install floodboards at every entry point.

Designating or building a safe zone can be life-saving. This could be an upper floor or a designated high-level room where families can take shelter.

Securing items that might pose risks to children is especially important: you should store chemicals, sharp tools and cleaning agents in high-located waterproof and securely locked cabinets as floodwaters may cause items to shift making.

In terms of outdoor measures, landscaping your yard with absorbent plants or porous paving can help absorb excess water. You can install french drains or to channel water away from your property as well as clear debris from gutters, downspouts and storm drains. Gravel, permeable concrete or paving stones in driveways and pathways allow water to seep into the ground, therefore reducing water pressure and damage. It would be smart to also install fencing with open designs, like chain links, to allow water to flow, reducing water pressure and damage as well as set up rain barrels to collect water from rooftops

By implementing these measures, families can significantly reduce the risks and impact of flooding on their homes and lives.

What they don't tell you about living on a Thames island.

By Johnson Asi

Transitioning into a new environment is always hard and adjusting from living in a busy overpopulated city , to a peaceful tight knit island is quite shocking. This feature entails the process of moving somewhere new, with advice and insight of Thames living from fellow resident of Wheatley’s Ait Victoria Scott.

1. When you’re moving somewhere new, always check the weather on the day you’re moving or else you might end up caught in a swirling tsunami.

2. Make sure there is actually space for your movers to park there or else you’re going to end up doing your daily exercise as your doing cross country to carry your belongings to your house.

“There’s no space to park our cars so we have to park then walk to the mainland and cross the bridge and then onto the island so it’s quite exhausting.”

3. Make sure you have a proximal parking space if you have a car because, if not, you’re going to end up losing so much weight, going back and forth.

“Getting a delivery is a challenge, you have to plan in advance, and use a trolley to carry things back and forth across the island terrain.”

4. If you’re gonna have food delivered or you have to be meticulous in planning for every scenario. MI9 should watch out Misland is coming for them.

“Where I lived before no-one really talked to each other but where i live now, there are 10 houses and everyone looks after everyone else, we feed each other’s cats.”  
Victoria Scott.

Tight-knit communities support each other through thick and thin but they also know each other’s business like the back of their hands. Keep an NDA on hand, you never know who’s listening.

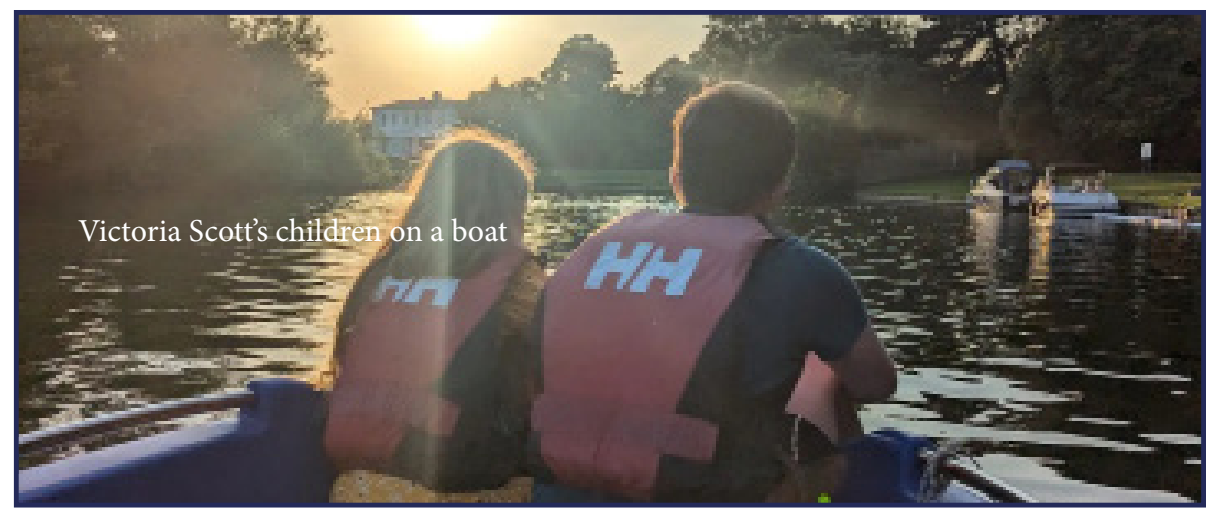
“  
We moved to Wheatley’s Ait 2 and a half years ago, on the day of one of the biggest storms there’s ever been. It was very windy and wild.  
”

“In the summer, going on the boat is the best thing, it’s very peaceful and quiet, just you and the sea.”

Maybe too quiet though, have your lifejackets ready, don’t let the water whisk you away.

“All our houses built on stilts, so we put a lot of hardwork in prepping countermeasurs for floods, so we believe safety is the highest priority, because nothing is more important than your life.”

“Floods are the real deal, so make to sure to turn on your flood alerts.”



Victoria Scott’s children on a boat



## Living on a thames island: a double-edged sword

by Johnson Chibuikem Asi

Nestled amidst the tranquil waters of the River Thames, the islands present a unique blend of idyllic charm and practical challenges. From picturesque scenery and a sense of exclusivity to concerns about accessibility and seasonal flooding, life on a Thames island is an experience like no other. Here, we weigh up the pros and cons of this distinctive lifestyle.



Photograph by Victoria Scott

### 1. Great community

One advantage of living on a Thames Island is that the community is very embracing and you're never alone. You know who everyone is and everyone knows you so if something happens you always have a shoulder to lean on.

### 2. Beautiful scenery

As soon as you reach the island, the effervescent natural scenery instantly blows you away. If you're someone who loves nature, this is the place for you.

### 3. Peaceful environment

Surrounded by an abundance of nature you can feel the tranquility in the air. As you walk through the island, it's as if all your troubles are just disappearing.

### 4. Aquatic activities

A great thing about living on a Thames Island especially in the summer is the aquatic activities available. As a result of its unique and beautiful location beside a river, there are lots of activities possible such as swimming, kayaking, canoeing, sailing and paddleboarding.

### 5. Unique culture

As you get to experience unique festivals, culture and customs that you may not experience anywhere else such as the Henley Festival and Steampunk The Thames Festival. You see the way they use the river Thames in ways that you could never have imagined.

### 1. Risk of flood

One disadvantage of living on a Thames Island is you are at high risk of flooding and so if you have antrophobia this would not be a suitable environment for you, I would also not recommend you living here if you can't swim or have thalassophobia (fear of the ocean and large bodies of water) or aquaphobia (fear of drowning) as you would not be able to rest easy.

### 2. Transport is limited

A second disadvantage of living on a Thames island is that transport is limited as buses don't come often, so if you miss the bus the only cheap option is to either drive or take a bike if you want to get somewhere quickly or if it works for you and you're willing to spend more you can book a cab or walk to the nearest station and take train to wherever you need to go.

### 3. Higher living costs

Due to the unique location of the islands, property prices and living expenses may frequently be high. This happens because of the desirability of waterfront properties and the limited availability of land. Residents may face higher costs for housing, groceries, and other essentials.

### 4. Wildlife encounters

Living on a Thames island means that you are very close to nature. While some love wildlife, others may not, so this could end up being your worst nightmare or your dream environment, depending on which one you prefer.

### 5. Limited job opportunities

If you're living on a Thames Island, something you definitely need to be aware of are the limited job opportunities. Most jobs may be focused on the mainland so you'll need to commute or find wifi flexibility.



# Save the Date

March 30th 2025



Sweet ambience – authentic historical atmosphere and obviously good wine- Margot Parisi dives into the history of Ye Olde Swan and reveals if it is really the pub to go to in Thames Ditton –and if it is the pub to treat our mums and wives (or ourselves) for Mother's Day.

# W

With Mother's Day right around the corner in March, we are probably all naturally struggling where the place would be to go –where we wouldn't even have to rely on the two-faced weather, we get cursed with going into spring. Maybe, the historical gem Ye Olde Swan might be the one. Walking around Thames Ditton I stumbled across the place whilst searching for a good place that would be suitable to treat my mum for Mother's Day. I had heard of Ye Olde Swan before, as it is part of The Old English Inns group, a chain of historic pubs, with this one amazingly being around since the 13th century. Henry VIII used the place as a hunting lodge, being so close to his humble abode at Hampton Court Palace. After trying every single door to get in, I finally found an entrance that actually opened on the side facing the river, where I got greeted with a cute sign that I was walking in the same footsteps as the Tudor King himself.

There are four rooms inside the pub, one of them being located upstairs and only open when the other areas are full. I noticed a room where guests can also play darts in and although I'm not any good, I enjoyed watching the regulars have loads of laughs playing it, so I definitely think it is a nice touch to the place. There is a room where you can book a table called the Tudor Room, where I assume is paying homage to Henry VIII's visits to the place. It also looked like a cosy and intimate

room to eat and drink in. The outside area is possibly the prettiest part, where there is a large patio overlooking the water, and if the weather treats you good, could be the perfect place to sit at for Mother's day.

I sat at the seats by the window, as it was too cold (for me anyway) to sit outside, and it was also not very well lit when it gets dark. I would recommend if there were a nippy breeze outside to sit by the window inside by the entrance, as it still gives that feel of enjoying a nice drink or meal by the river. The menu looked really impressive, with reasonable prices and although I came too late to eat (kitchen closes at 9pm) I had heard the table next to me being really contented with their food. I decided to order a wine first, in true spirit for what I believe a mum should be drinking to relax on the special day. I went up to the impressive large bar and asked for a recommendation of which glass of red to drink and although the barman gave me a few raised eyebrows (possibly because I didn't look at all classy enough to be ordering one as I was drenched from the rain) he recommended their Malbec. For the largest glass 250ml - because let's face

it, all mothers need a tall pour- it was only £7.69, and it had a very sweet plum flavour that overrode the usually savoury bitter flavour of Malbec wine. My mum's personal favourite for drinks is an Aperol Spritz, so I ordered one next, which was only £5.99 and had a sweet Mediterranean citrus taste to it. I thoroughly enjoyed both drinks, enjoyed the prices, and enjoyed the atmosphere I was sat in.

The menu for Mother's Day consists of a Sunday Roast which gives a choice of either Sirloin Beef, a Turkey or a veggie option of Beetroot, Sweet Potato & Butternut Squash Tart. Ye Olde Swan also appreciates the fact that if your day is already busy, you can make a quick pit-stop just to order a ciabatta or a burger. Overall, I believe that the place was a good spot to lounge by the river for Mother's Day, to be able to make the day really special to show appreciation for our mothers and ourselves.



Malbec wine emptied happily



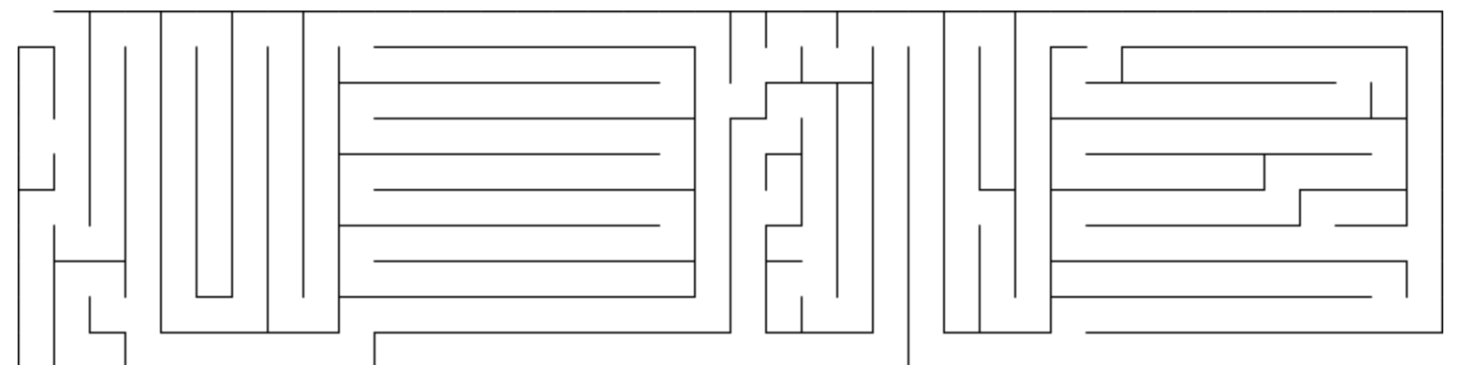
A fun little Wordsearch madeup of the names of different islands on the river thames. Have fun and Enjoy



- SWANISLAND [solve](#)
- THELYNCH [solve](#)
- VIEWISLAND [solve](#)
- WHEATLEY'SAIT [solve](#)
- DITTON [solve](#)
- TEMPLEISLAND [solve](#)
- MAGPIEISLAND [solve](#)
- ASHISLAND [solve](#)

Created By Johnson

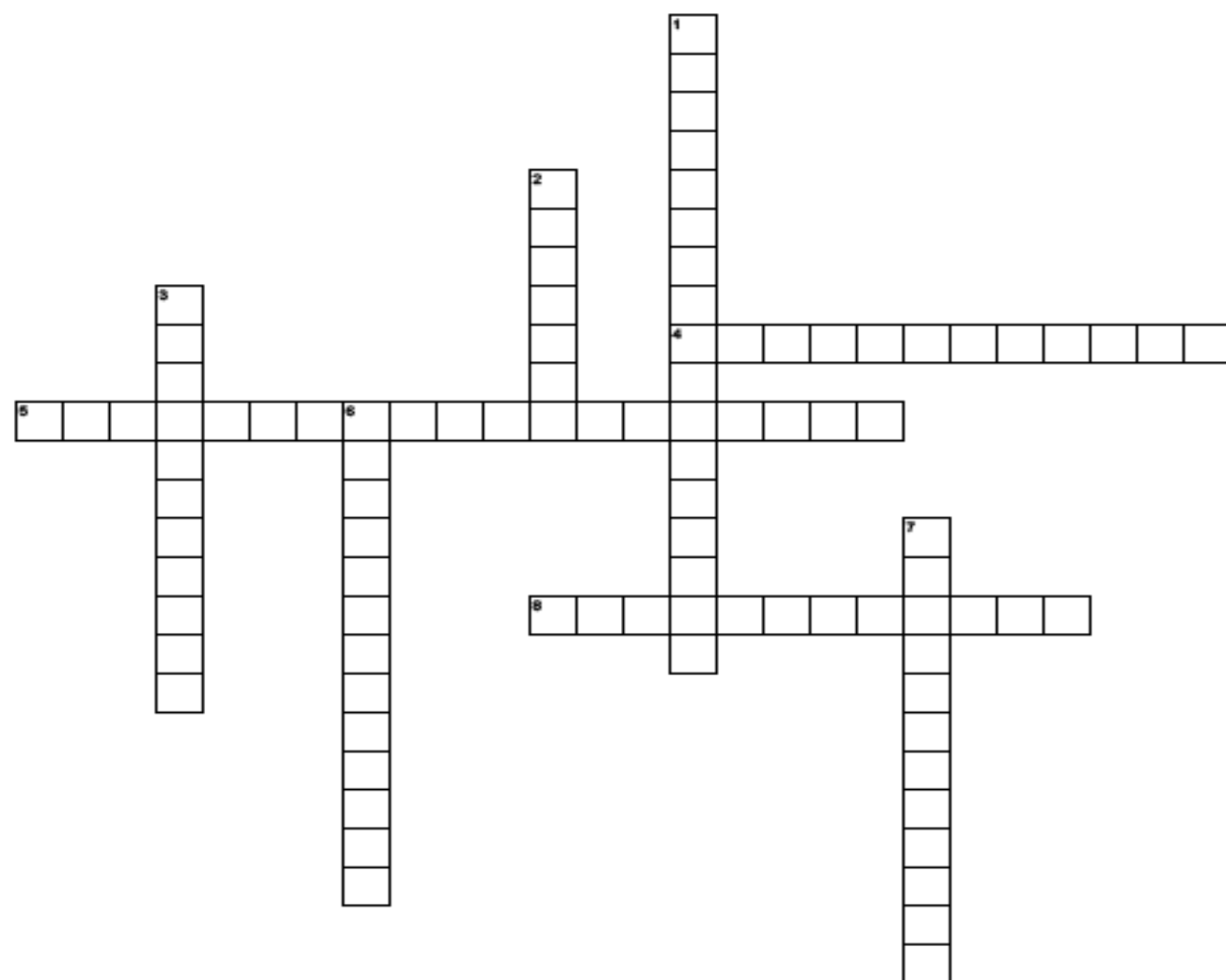
### Find The Way To The Boat



Created by Dylan Gerard



# Thames Island Crossword



**Across**

- [4]** first Thames island to be established as a nature reserve
- [5]** Thames island with the best storm protection
- [8]** Smallest thames island

**Down**

- [1]** Smallest Population
- [2]** Largest island on the river thames
- [3]** Birthplace of the Thames Islands
- [6]** Largest Populated Thames Island
- [7]** Most Famous Thames Island

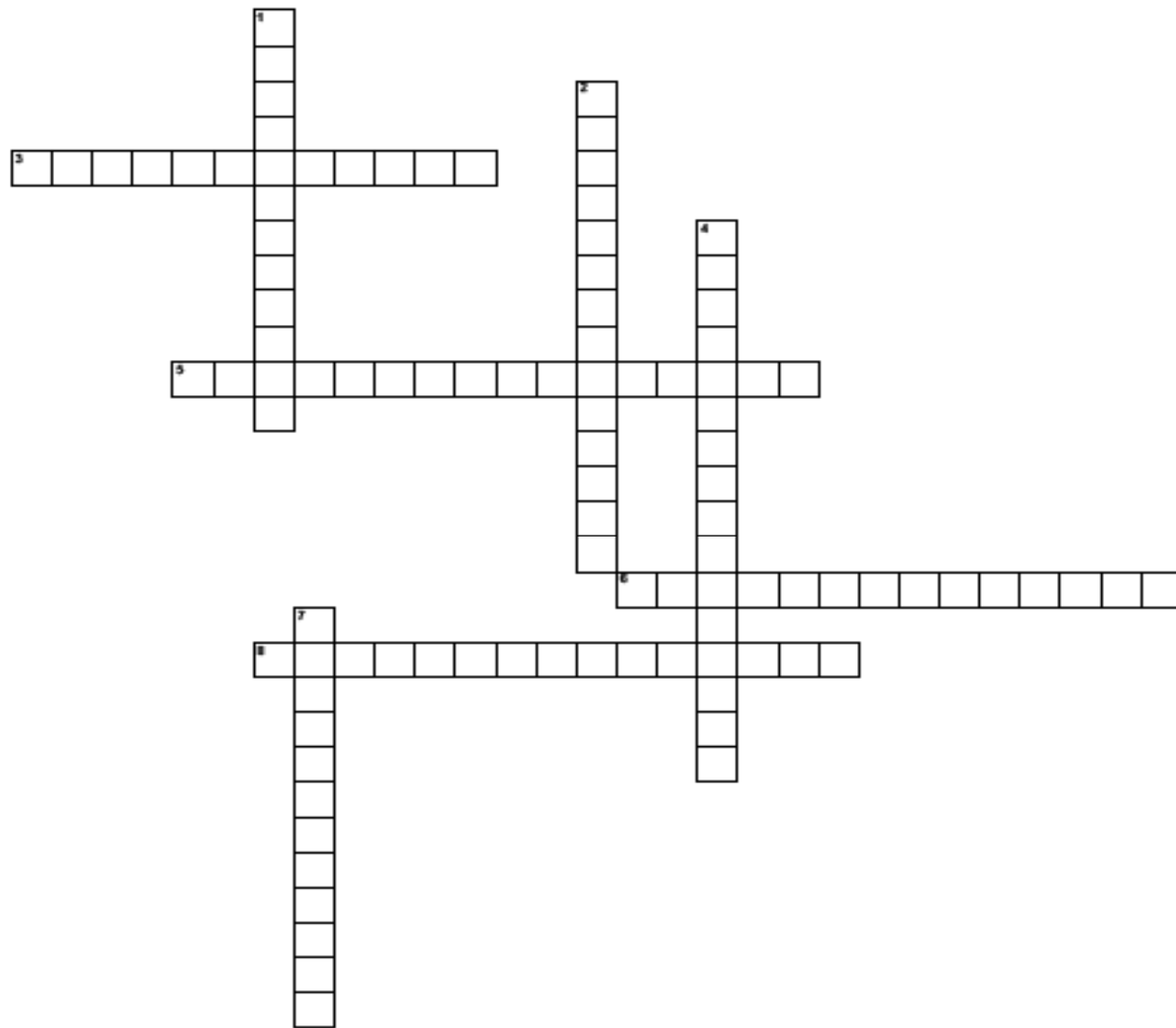


- ISLEWORTHAIT [solve](#)
- LOWERHORSE [solve](#)
- MAGNACARTA [solve](#)
- NAG'SHEADISLAND [solve](#)
- OLIVER'SISLAND [solve](#)
- PHARAOH'SISLAND [solve](#)
- QUEEN'SEYOT [solve](#)
- ROSEISLE [solve](#)

## Decode The Three Thames Island Names

t	E	e	C	h	i	d	l	P	e	r	s	i	e	E	y	o	P	i	p
c	k	a	n	d	I	s	I	s	l	l	a	n	s	w	i				

# Thames Island Crossword



**Across**

- [3]** The island features a folly designed by James Wyatt in 1771, which is a popular landmark during the Henley Royal Regatta
- [5]** popular for fishing and picnicking
- [6]** Named after Oliver Cromwell, it is said that he used the island as a hideout during the English Civil War
- [8]** Named after the Pharaoh steamship, this island was given to Admiral Nelson after the Battle of the Nile

**Down**

- [1]** a hub for the British Blues scene in the 1960s
- [2]** This island was once owned by a local boat builder who used it as a base for his operations
- [4]** the site where King John signed the Magna Carta in 1215
- [7]** used as a staging point for troops during the English Civil War

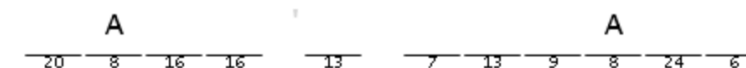
A	G	X	P	C	A	D	P	J	A	H	J	R	O	J	N	D	X	Z	M
H	L	Z	Z	J	T	J	E	E	P	F	R	A	Z	R	E	V	P	O	F
V	O	N	H	H	F	Z	L	R	P	P	I	L	G	A	P	T	W	P	P
B	V	D	E	S	V	B	R	C	L	D	H	H	D	X	M	G	H	P	S
R	E	I	A	J	O	M	V	T	E	W	J	W	C	V	X	N	N	P	X
E	R	O	D	U	Y	H	D	K	T	W	A	A	K	I	H	E	Q	J	O
N	'	A	P	T	Y	V	V	T	R	T	N	B	Y	R	H	T	R	T	R
T	S	C	I	E	L	N	Z	C	E	V	M	C	V	B	Q	S	F	G	U
F	I	L	L	G	E	I	M	R	E	L	I	H	O	P	R	F	O	O	W
O	S	W	E	N	R	U	A	Y	E	L	K	K	B	D	G	R	I	T	S
R	L	P	E	F	S	I	M	Y	C	J	Y	W	S	S	T	Z	W	E	
D	A	N	Y	Z	T	S	U	S	O	R	K	Q	A	S	E	F	A	N	T
A	N	Z	O	J	L	H	R	I	T	N	F	O	G	N	T	I	P	Y	E
I	D	D	T	A	S	F	E	R	R	Y	E	Y	O	T	J	A	D	T	K
T	H	D	N	A	L	S	I	E	I	P	L	E	E	Z	B	N	I	N	Q
K	O	D	S	P	J	P	B	W	N	I	R	X	W	F	D	B	W	Q	J
B	V	D	G	D	V	V	Y	V	F	S	P	U	W	O	A	T	B	I	W
O	B	O	M	S	H	G	Q	M	G	H	M	Y	C	U	R	L	U	Y	U
X	C	M	O	P	A	D	V	T	B	G	C	U	F	N	R	F	K	E	P
F	S	V	H	S	I	B	N	M	A	Q	R	N	L	K	Z	J	B	V	V

- APPLETREEYOT [solve](#)
- BRENTFORDAIT [solve](#)
- CANVEYISLAND [solve](#)
- DEADWATERAIT [solve](#)
- EELPIEISLAND [solve](#)
- FERRYEYOT [solve](#)
- GLOVER'SISLAND [solve](#)
- HEADPILEEYOT [solve](#)

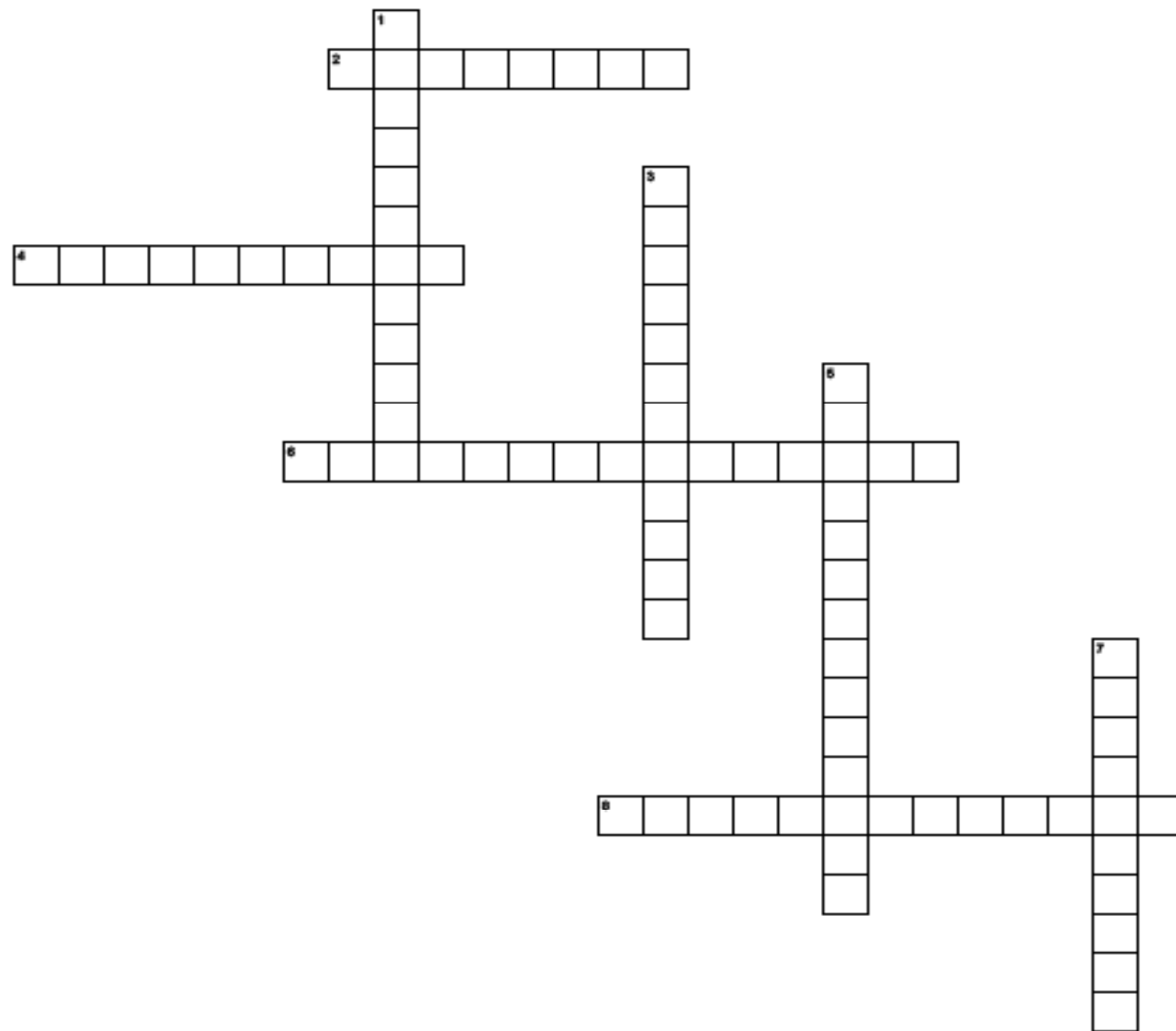
Created By Johnson

## Decode the The Thames Island Cryptoram

A	B	C	D	E	F	G	H	I	J	K	L	M	N	O	P	Q	R	S	T	U	V	W	X	Y	Z
8																									



# Thames Island Crossword



### Across

- [2] This island has been used for boat building for centuries and continues to be a hub for maritime activities
- [4] This island has a history of being used as a training center for the Sea Cadets
- [6] The Thames Path runs the entire length of Fiddler's Island, making it a popular route for walkers and nature enthusiasts
- [8] Ash Island is known for its lush greenery and beautiful surroundings

### Down

- [1] The island's hotel features unique frescoes of monkeys dressed as humans, painted by French artist Andieu de Clermont
- [3] In 1416, the church on the island was burned
- [5] shared between two counties, Buckinghamshire and Berkshire, with the border passing through its center
- [7] This island was a significant site for the production of motor torpedo boats

mlondon.



TREAT YOURSELF



**No Public Access**

**PRIVATE  
WORKING BOATYARD**

