

The background features a light blue grid pattern. Scattered throughout are various hand-drawn blue scribbles, including loops, swirls, and zig-zags. Two four-pointed starburst shapes are also present, one to the left and one to the right of the team name.

Team 2


**Sarah , Amelia , Lovelle , Archer ,
Matthew , Anaqi**

Our Topic

Tasked by Ministry of Manpower (MOM)

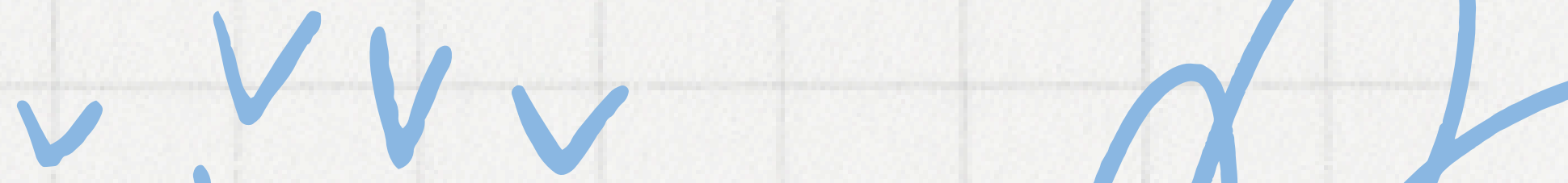
Singaporeans' youth attitudes
towards part-time employment





**What does
part-time
employment
mean?**



Type of work where employees work lesser hours than full-timers, such as contracts that last for a specified period of time or shorter shifts up to 6 hours.





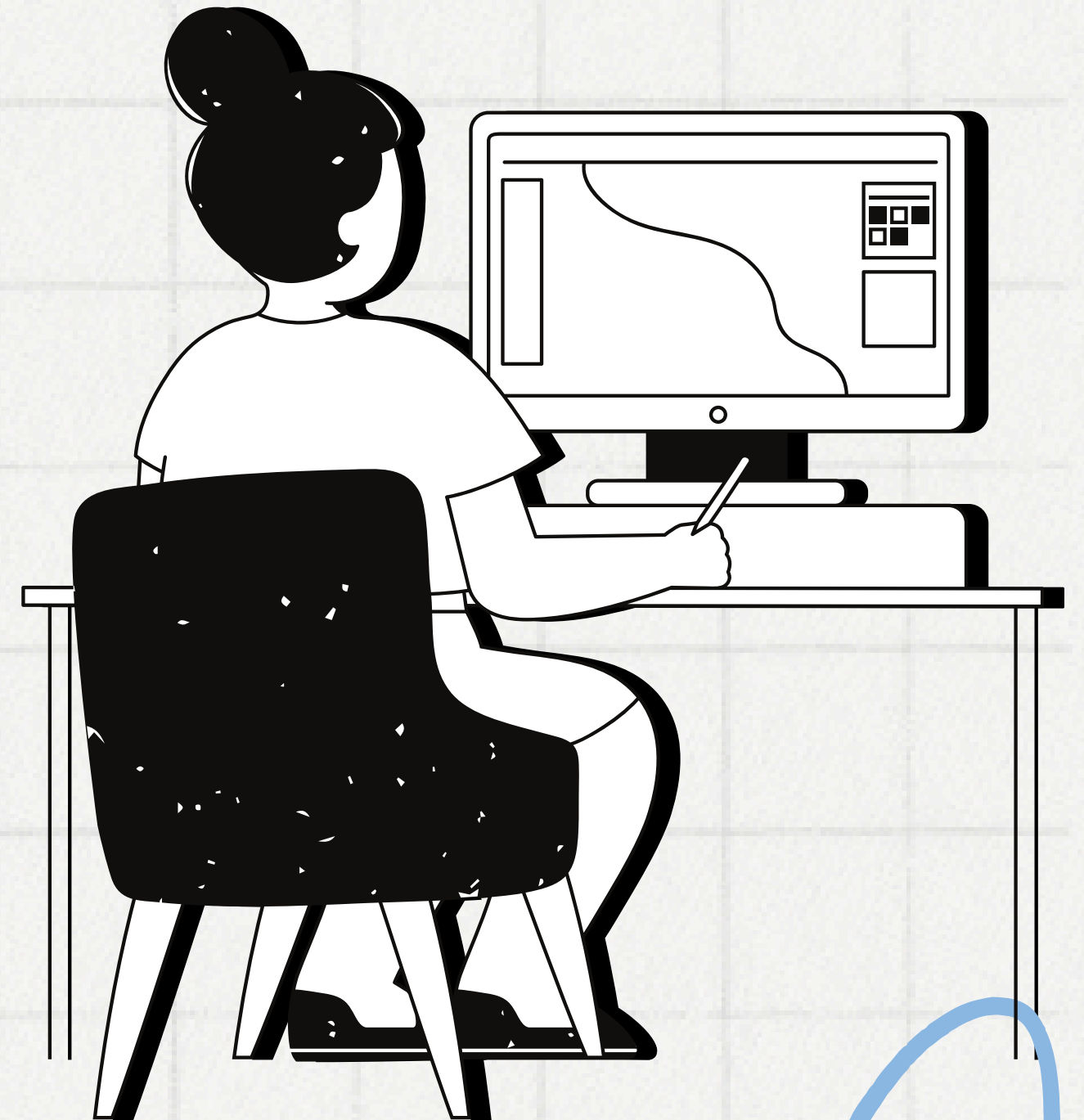
Target Group?

**Singaporean youths
aged 16–20 years old**



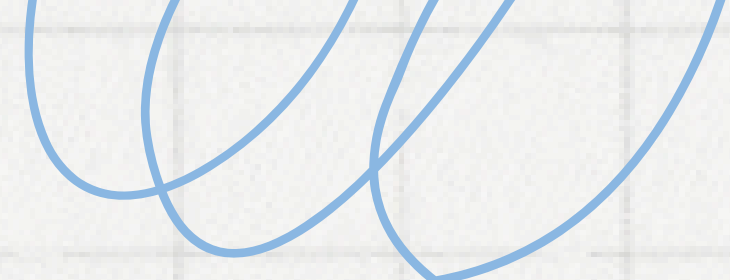

Research Question

Do Singaporean youth age 16–20 part-time workers have a good mental well-being and if they can maintain a good work-life balance.


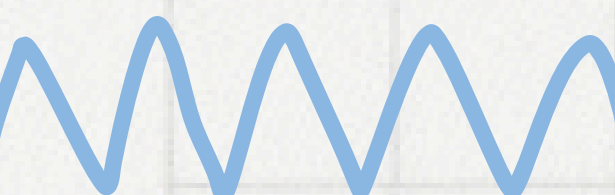


What is a pre-test?

A pre-test is a small scale survey done before it is tested on a larger scale as it is used to identify any mistakes or problems with the survey. The participants are required to complete the survey, thereafter they would give feedback on their experience in order for us to improve on our questionnaire. It is important that we pre-test a survey as it helps ensure the survey is accurate and reliable. This would help increase our rate of responses as well.



**5 things
we want to know
about youths
attitude towards
part time
employment**



01. Do youths enjoy their part time jobs?

02. Are youths well treated with respect by their elder higher-ups?

03. Do youths choose to work part time or because they must?

04. Do youths feel taken advantage of by their employers or colleagues?

05. Does working part time making you feel overwhelmed which affects your social life

Things we want to find out

- If part-timers feel comfortable in their work environment?
- If youths find part time jobs beneficial?
- Do part-time youths feel they are given equal opportunities for growth and development compared to full-time colleagues?
- Do youths feel taken advantage of from their employers or colleagues?
- Are youths treated well and respected by the higher-ups?



Survey Process

Demographic Questions

01

What industry
are you
working in?

02

Are you
currently
studying?

03

How old
are you?

Survey Process

Demographic Questions

04

What level of education are you currently at?
(JC, Poly, Etc.)

05

From 1-10, how much stress are you feeling from working part-time?

06

How many hours you usually work in a week?

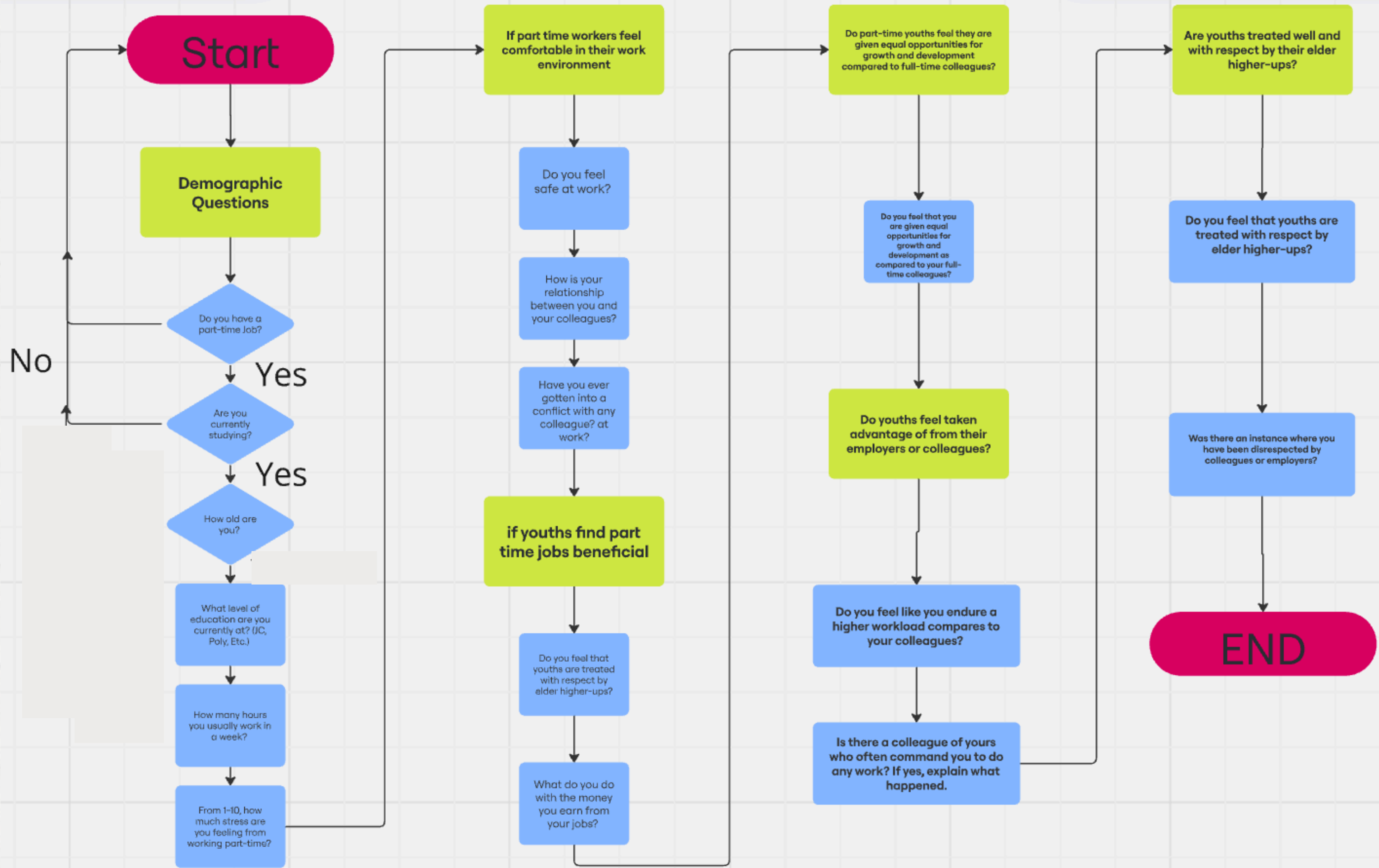
Categories

Demographic Questions: Q1–Q6

Dichotomous question: Q7

Likert scale question: Q8, Q10, Q13, Q15

Open-Ended Questions: Q9, Q11, Q12, Q14, Q16



No

Start

Demographic Questions

Do you have a part-time job?

Yes

Are you currently studying?

Yes

How old are you?

What level of education are you currently at? (JC, Poly, Etc.)

How many hours you usually work in a week?

From 1-10, how much stress are you feeling from working part-time?

If part time workers feel comfortable in their work environment

Do you feel safe at work?

How is your relationship between you and your colleagues?

Have you ever gotten into a conflict with any colleague? at work?

if youths find part time jobs beneficial

Do you feel that youths are treated with respect by elder higher-ups?

What do you do with the money you earn from your jobs?

Do part-time youths feel they are given equal opportunities for growth and development compared to full-time colleagues?

Do you feel that you are given equal opportunities for growth and development as compared to your full-time colleagues?

Do youths feel taken advantage of from their employers or colleagues?

Do you feel like you endure a higher workload compares to your colleagues?

Is there a colleague of yours who often command you to do any work? If yes, explain what happened.

Are youths treated well and with respect by their elder higher-ups?

Do you feel that youths are treated with respect by elder higher-ups?

Was there an instance where you have been disrespected by colleagues or employers?

END

Survey.

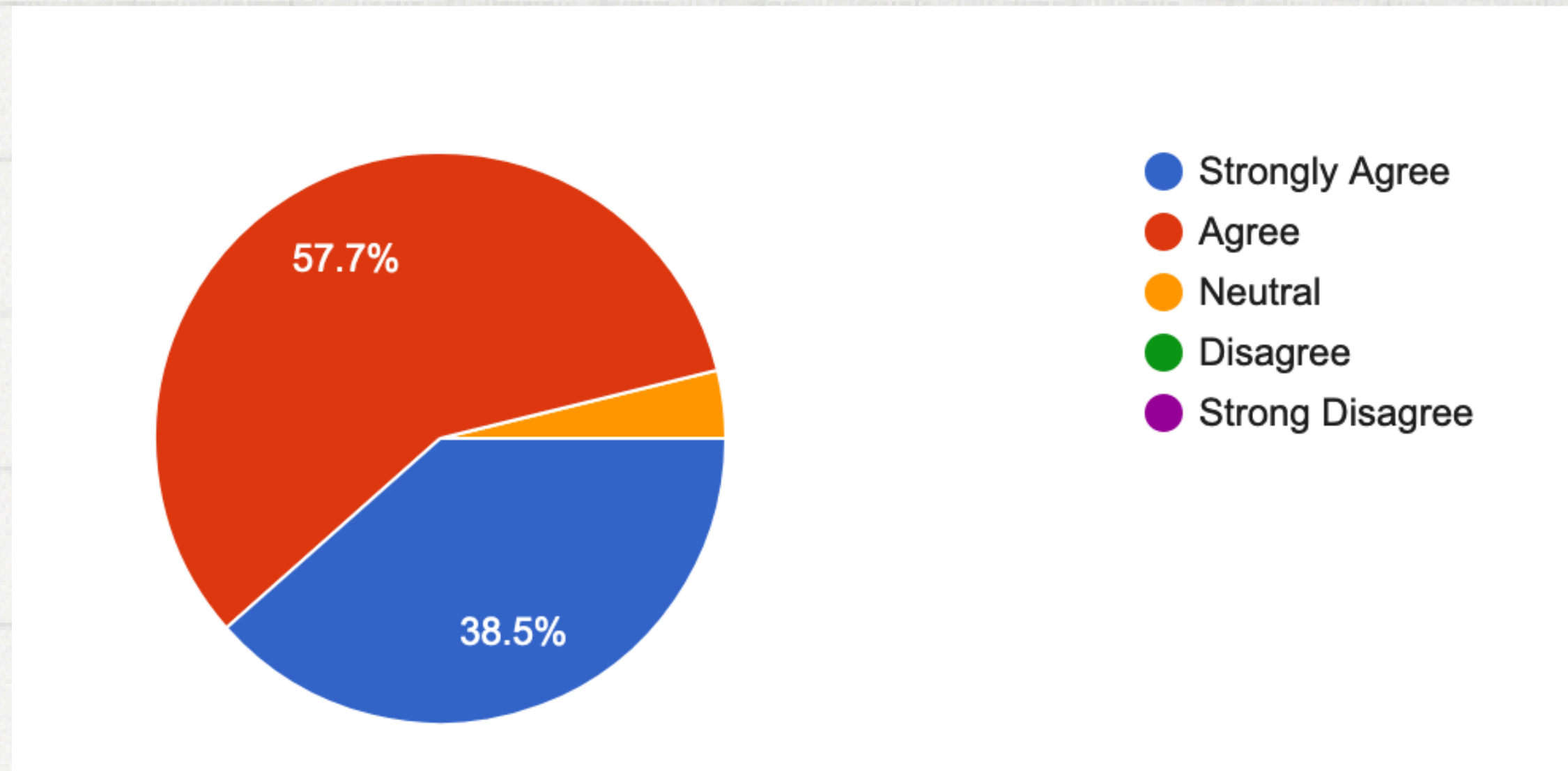
click the word for the survey

Summary of Demographic Information

- The majority of participants' age is of the **age of 17**
- Majority of the participants are **currently studying**, The majority of that being Polytechnic Students.
- Majority of participants work in the **Retail industry**, with the rest working in F&B, Hospitality and the minority in Admin.
- On average, participants have a **stress level of 5** from working part-time. With **majority** of participants selecting **5.5/10**. The **highest option selecting being 8/10** and the **lowest being 1/10**.
- **Majority** of participants selected they work **>15 hours a week**. The **minority** selecting **1-5 hours a week**.

Data and Findings We have Gathered

More than ~95% of participants **agree** that **part-time jobs are beneficial for the youth living in Singapore**



Neutral - 1
Agree - 15
Strongly Agree - 10



60%

**Have a good relationship with
their colleagues**


This means that the youth has more or less good relationship with their co-workers.

Neutral- 4 | Agree - 16 | Strongly Agree - 6

Work comfortability

Safety, Respect, Conflicts

- **Safety:** 84% of our surveyors feels safe .We had an hypothesis where we assume that all the surveyors would feel safe at work but there is still a handful of them who don't.
- **Conflicts:** 53% of our surveyors had a conflict with their colleagues which may be the reason why they feel uncomfortable due to the threat.
- **Respect:** 53% of them also feel disrespected by their colleagues and employers and may not feel comfortable to the mistreatment
- **Conclusion:** Majority (63%) of our surveyors does not feel comfortable when they are working at their part time job. The factors caused may be because there is a breach of safety, respect and conflicts. Due to this mistreatments, this could have affect their mental well being.



50%

Have faced conflict at work

Our group assumed that the minority of surveyors would experience some sort of conflict at work, but finding out that exactly half of the surveyors experienced conflict was surprising. This norm of conflict occurring in workplaces is concerning as conflict can cause stress and negatively affect the well-being of student part-time workers

80.8%

don't feel like they have to endure a higher workload compared to their colleagues

Our group assumed that most part-timers would endure a higher workload compared to their full-time colleagues as part-time workers are seen as “disposable” employees who can be pushed around. However, this does not seem to be the case as a large majority says they don't feel like they endure a higher workload compared to their colleagues. This is good as part-timers can endure and cope with their workload

Strongly Disagree - 1 | Disagree - 8 | Neutral- 12 | Agree - 4 | Strongly Agree - 1

42.3%

**are treated with respect by
the elder employees**

We found out that most of the surveyors are treated with respect whereas 38.5% are neutral and 11.5% feel disrespected by the elder employees.

Strongly Disagree - 1 | Disagree - 3 | Neutral- 12 | Agree - 11 | Strongly Agree - 1

The background features a light blue grid pattern. Scattered around the grid are various hand-drawn blue scribbles, including loops, swirls, and zig-zags, giving it a creative and informal feel.

Thank You

Team 1