

# Josh Acheampong

Defender • 19 yrs • Chelsea • Premier League • 2025/2026  
England • Right foot • 190cm • Contract: June 2029



Games Played

Minutes Played

Goals

Assists

Average Rating

Dribble Success %

Pass Accuracy

Duels Won %

9

478

1

0

6.54

77.8%

78.3%

72.1%

Goal Threat

87

Progressive Carrying

75

Ball Retention

82

Box Defending

28

1v1 Defending

92

Chance Creation

42

Ball Recovery

78

Goal Efficiency

100

ATTACKING

GOALS

0.19

97

SHOTS ON TARGET

0.38

92

SUCCESSFUL DRIBBLES

1.32

95

BIG CHANCES CREATED

0.00

23

ASSISTS

0.00

32

XG

0.07

75

DRIBBLE SUCCESS %

77.8%

85

BIG CHANCES MISSED

0.00

89

SHOTS

0.56

56

XGOT

0.18

97

CHANCES CREATED

0.19

23

PASSING

ACCURATE PASSES

59.12

88

KEY PASSES

0.19

22

LONG BALLS

2.82

1

PASS ACCURACY %

78.3%

30

CROSSES ACCURACY

0.19

51

PASSES IN FINAL THIRD

3.58

1

THROUGH BALLS

0.00

37

DEFENDING

TACKLES

1.32

32

CLEARANCES

2.82

23

DUELS WON %

72.1%

84

INTERCEPTIONS

1.51

85

BLOCKS

0.56

57

AERIALS WON

1.88

54

BALL RECOVERY

3.77

52

DUELS WON

5.84

79

DISCIPLINE & OTHER

FOULS DRAWN

0.94

75

TOUCHES

79.64

85

FOULS COMMITTED

0.19

95

RATING (AVG)

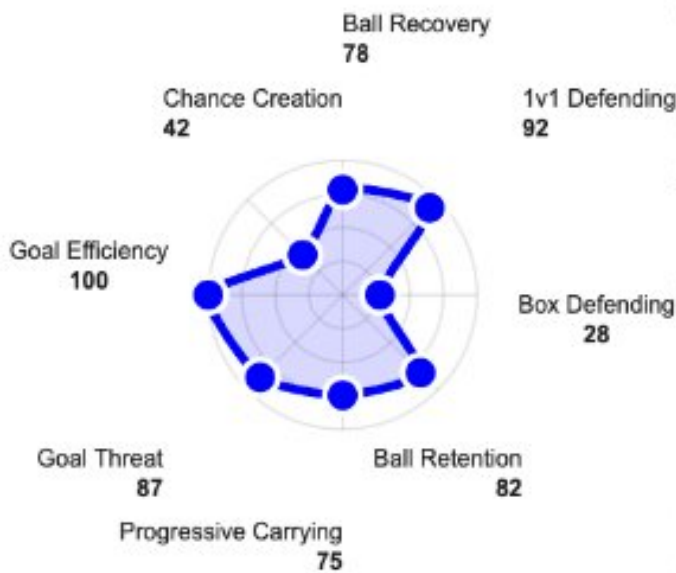
6.54

35

YELLOW CARDS

0.00

88

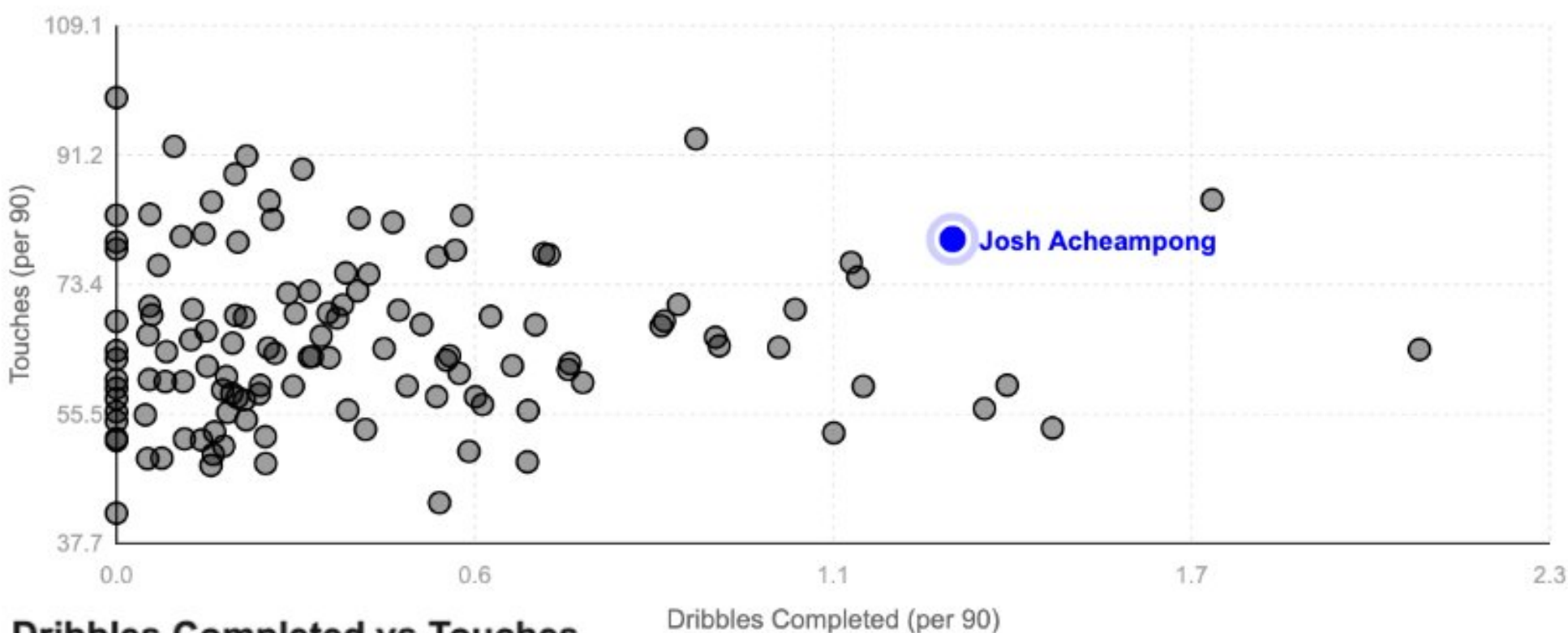


Josh Acheampong is an 19-year-old English defender at Chelsea who has transitioned from a long-time academy prospect into a meaningful part of the first team. A London-born player who joined Chelsea's academy as an Under-8, Acheampong signed his first professional contract in early 2024 and made his senior debut just before turning 18 in a Premier League win over Tottenham. Since then, he has accumulated over a dozen appearances across the Premier League, European competition and domestic cups, offering flexibility between centre-back and right-back positions while earning praise for his maturity and composure at his age. Internationally, he has represented England through multiple youth levels, from U-16 up to U-21. Chelsea consider him an important part of their defensive future, reflected in his long-term contract and continued involvement under in the first team.



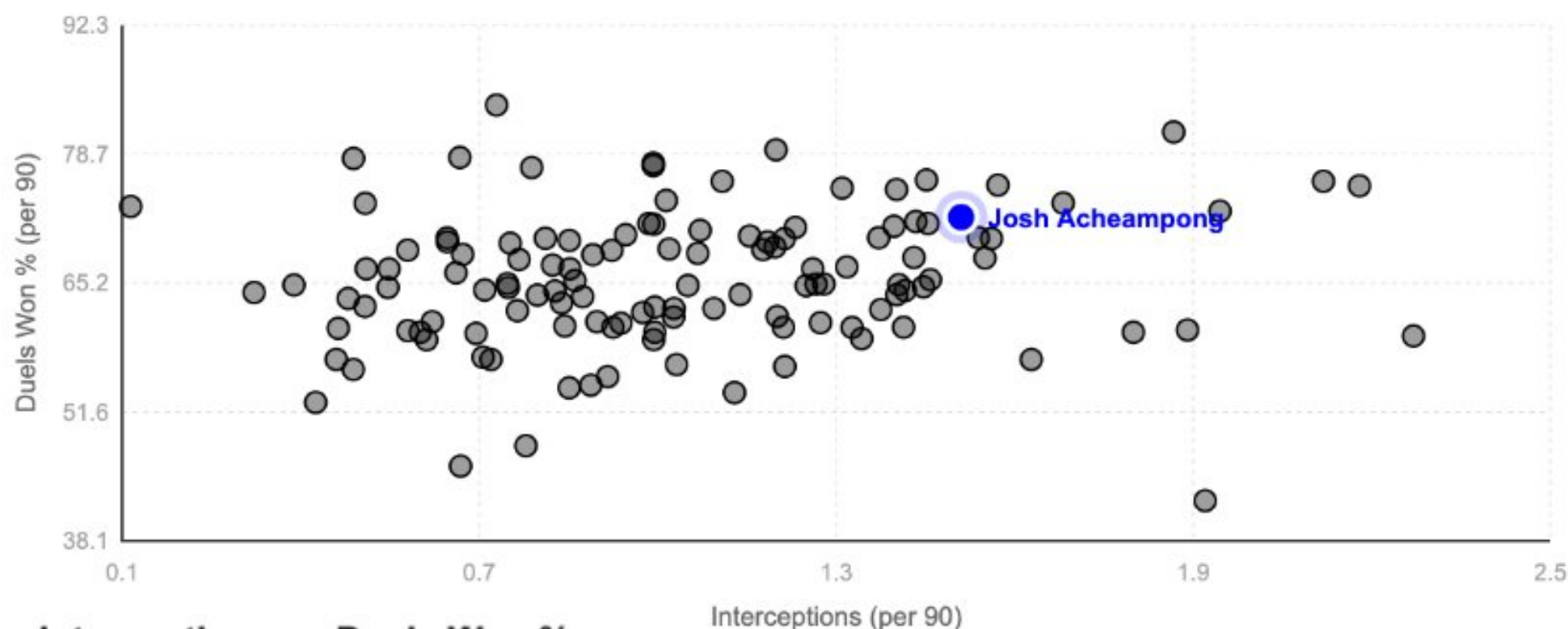
# Josh Acheampong

Defender • 19 yrs • Chelsea • Premier League • 2025/2026  
England • Right foot • 190cm • Contract: June 2029



## Dribbles Completed vs Touches

Josh Acheampong sits toward the higher end for dribbles completed while still maintaining a healthy touch volume, which points to a player who is actively involved in possession and confident carrying the ball forward.



## Interceptions vs Duels Won %

Acheampong plots strongly in both interceptions and duel success, placing him among players who consistently engage in duels and come out with the ball. His positioning here reflects a defender who anticipates play well and combines that with the physical capacity to compete effectively when contact is required.



# Josh Acheampong

Defender • 19 yrs • Chelsea • Premier League • 2025/2026  
England • Right foot • 190cm • Contract: June 2029



## Technical

Technically, his game is built on clean defensive execution and secure first-phase actions. He shows a controlled first touch when receiving in deeper areas, keeps his passing crisp over short and medium distances, and has the ball-carrying technique to step away from pressure without needing multiple touches to set himself. In defensive actions, his tackling technique is disciplined, he stays balanced, uses his reach well, and wins contact without over-swinging or diving into challenges. Aerially, he attacks the ball with good timing and clean contact.

## Tactical

**Tactically, Acheampong** profiles as a defender who understands space across multiple defensive roles. He has been used as a right-sided centre-back, right-back, and in wider defensive roles, and his game translates because he is comfortable defending both inside and outside channels. When playing centrally, he holds his line well, engages forwards early, and shows awareness of when to step into midfield to intercept passes. From wider positions, he manages distances effectively, staying connected to the back line while still being willing to step forward and engage higher up the pitch.

## Physical

Physically, his profile is a big part of why he projects. At around 1.90m he has the frame to handle senior duels at centre-back and the reach/stride to survive wide defensive situations when used as a fullback. The fact he has logged senior minutes across competitions as a teenager, then earned a long-term extension through 2029, suggests the club believe his athletic base is already at a level of senior football.

## Mental

Mentally, the clearest signal is how quickly he has been trusted in senior environments — debuting in the Premier League before turning 18, starting league games shortly after, then signing an extension after a period of contract uncertainty. People at Chelsea have highlighted his attitude and mental strength, which aligns with a player who stayed involved during a time of uncertainty before re-entering the matchday squad.