

Flavio Nazinho

Euro U21 Report

31-12-2025

By Willam Rees

Flavio Nazinho

Current club
Nationality
Best position
Date of birth (age)
Height
Foot

Cercle Bruges
Portugal
Left Fullback/Wingback
20/07/2003 (22)
180cm
L



Current level

Belgian Pro League

Potential level

Mid Table Top 5 Leagues

Technical

Technically, Nazinho is most effective when the game opens up and he can advance play through carrying the ball at speed, using long strides and close-enough control to eat up space quickly. His attacking output from wide areas is a clear strength, particularly on the overlap, where he can deliver crosses at pace first time or adjust the weight and deliver a more delicate ball in when he has a moment to slow down and set himself. He is capable of playing forward passes that break lines into midfield or release runners in behind with balls over the backline, showing he has the confidence progressing possession rather than defaulting to recycling possession. His touch can be a bit heavy in tighter areas, and at times he looks slightly rushed when operating at full speed, suggesting he is more comfortable in open space than in congested zones. He is heavily reliant on his left foot, which makes his dribbling actions a little predictable at times, especially when he is driving down the byline, he is frequently looking to deliver the final ball with his left but his technical quality remained pretty consistent overall.

Report by Willam Rees

Tactical

Tactically, Nazinho is naturally an aggressive left-back, frequently pushing high and wide, frequently overlapping, occasionally underlapping to support attacks. He looks quite comfortable operating further up the pitch in a wingback or wide midfield role. He has a background as a former winger, and it is evident in how naturally he times his forward runs and commits to the attacking phase, often prioritising width and delivery over conservative positioning. Despite this, his overall positioning in and out of possession was sound, maintaining good distances with the left centre-back and not leaving the defensive line overly exposed. His experience playing in different roles across the left side, and even as a CB at times, points to a player who is trusted to handle various tactical demands. That being said, his attacking patterns are fairly repeatable, with a clear preference for staying wide and delivering from the outside rather than moving inside.

Mental

Mentally, Nazinho plays with a sense confidence and forward intent, especially in his attacking actions, where he shows little hesitation to drive forward at pace or commit defenders in 1v1s. Defensively, he appears comfortable engaging in duels and relies heavily on his physical attributes to resolve situations, with slide tackles standing out as his most effective 1v1 defensive action. His anticipation when stepping into passing lanes is good, allowing him to intercept play rather than constantly defending from a set position. He shows belief in his strengths and repeatedly backs himself to reach advanced areas and deliver, sometimes bordering on predictability but reflecting a strong sense of conviction. Overall, his approach suggests a player who trusts his athletic and technical base and plays positively.

Physical

Physically, Nazinho brings an impressive combination of speed, power, and upper-body strength for a fullback, especially given his height, at 180cm you wouldn't expect him to be able to compete effectively across different types of duels. He is very strong in the air, timing his jumps well and consistently clearing the ball with authority. His acceleration with the ball is a major asset, particularly in transition moments, where he can turn defensive situations into attacking situations very quickly. He has a very quick first step, his balance and agility are strong overall and support his ability to change direction at speed. Once he builds momentum going forward, he becomes difficult to stop without fouling or committing additional defenders.

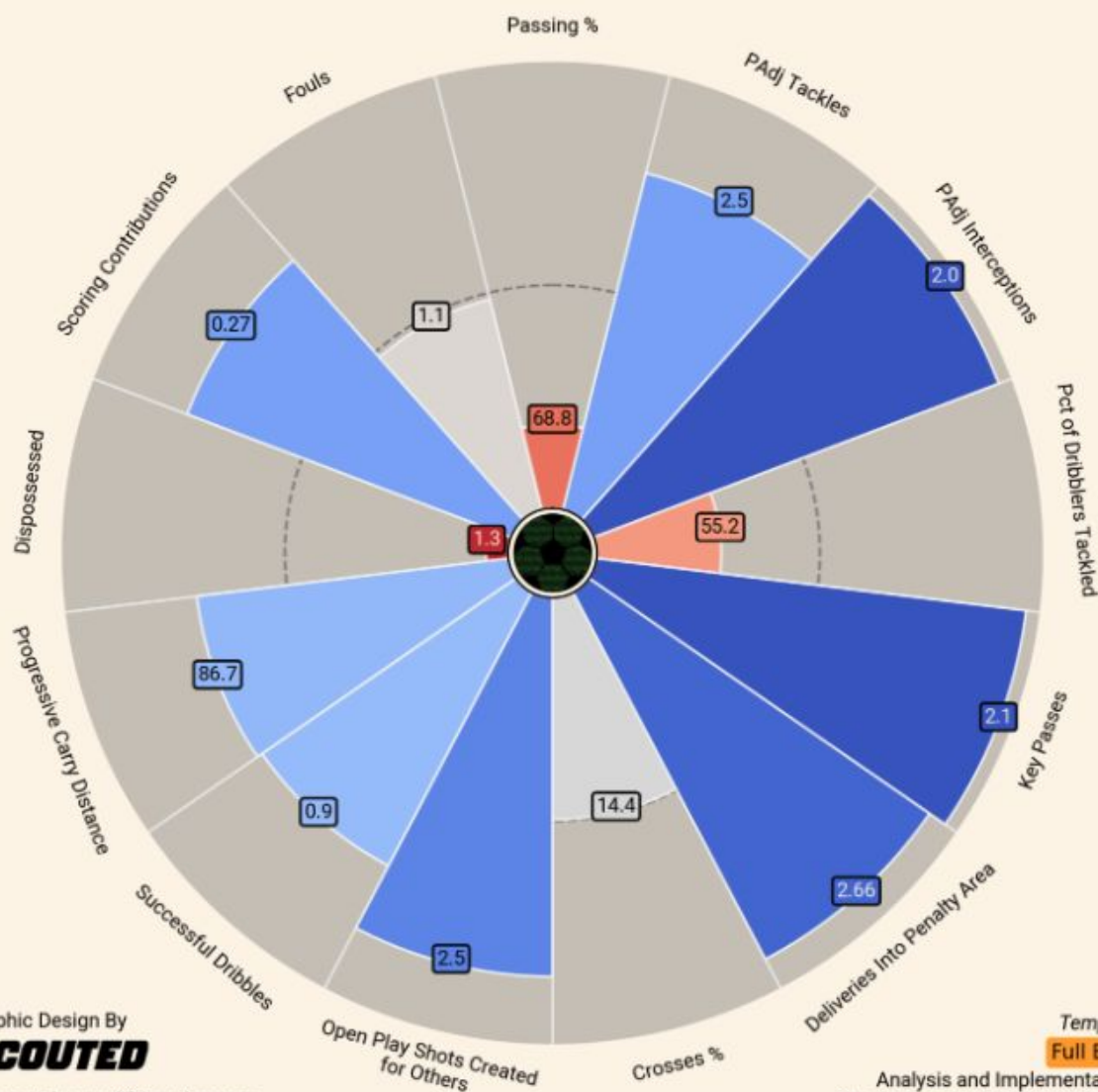
Conclusion

Nazinho profiles as an attacking left back/left wingback whose game is built around his pace, power, and forward momentum, offering consistent value in advanced areas while remaining physically reliable defensively. His strengths lie in ball-carrying in space, overlapping runs, delivery from wide zones, and aerial dominance, all of which suit an aggressive system that asks fullbacks/wingbacks to contribute high up the pitch. Defensively, he relies more on physical tools and reactive defending than refined 1v1 technique, and his strong left-foot preference can limit variation in his play when attacking in the final third. However, his overall positioning, confidence, and athletic profile point towards a fullback who is well suited to teams who want to attack. His key areas for improvement would be to improving his decision-making and unpredictability in possession.

Flavio Nazinho

1352 minutes | 22 years old

Cercle Brugge | Jupiler Pro League | 2025/26 season



Graphic Design By
SCOUTED

Compared to qualifying players in
Championship, Eredivisie, Europa League, Jupiler Pro League and Primeira Liga

Template
Full Back

Analysis and Implementation:
@mclachbot and @ChicagoDmitry
Data from www.fbref.com