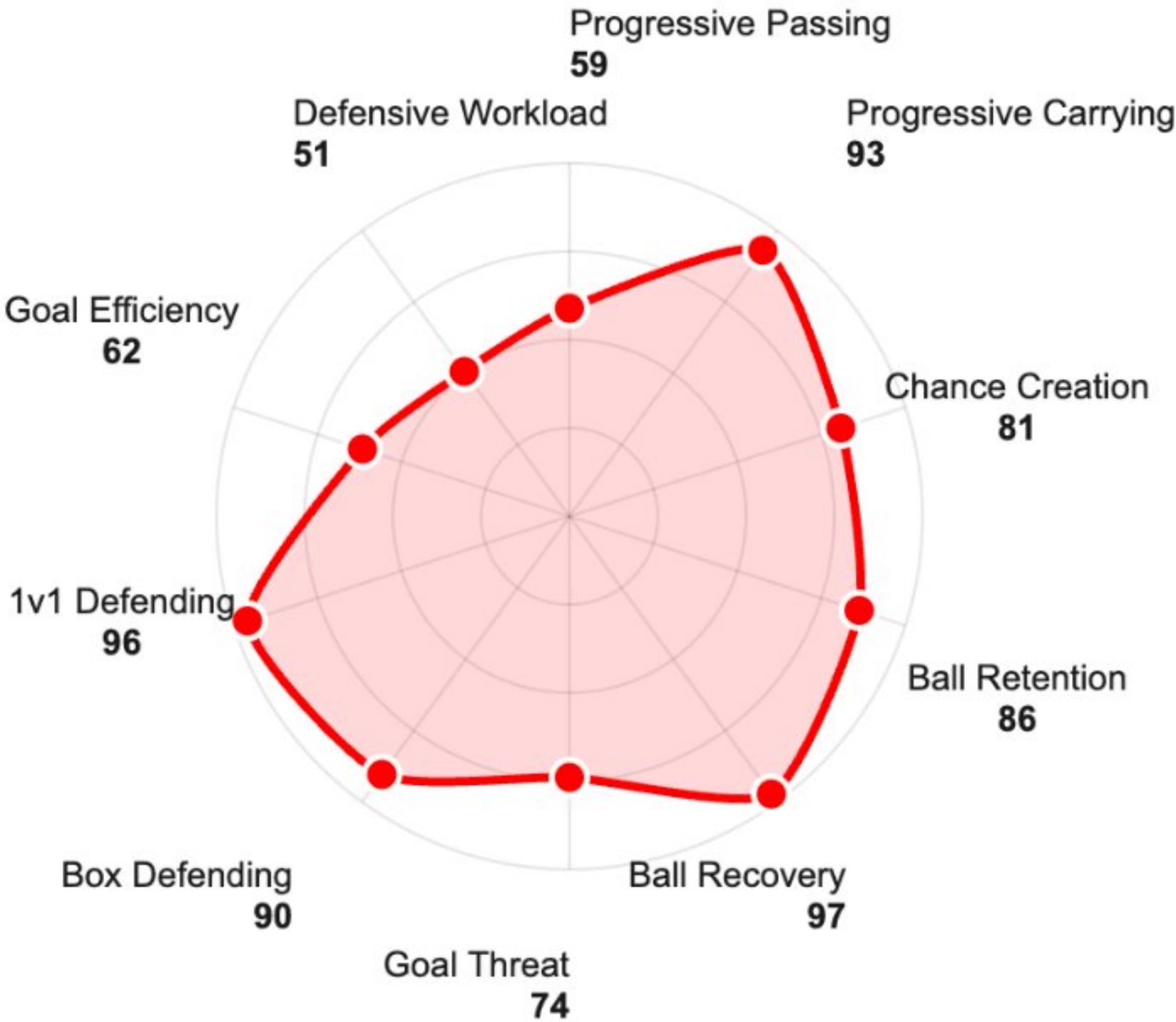


Lewis Hall

Defender • 21 yrs • Newcastle United • Premier League • 2025/2026
England • Left foot • 179cm • Contract: June 2029



Games Played	14	Lewis Hall is a modern fullback who blends midfielder instincts with wide-defender responsibilities. Comfortable stepping into central zones or advancing high on the left, he offers genuine progression through his passing range, ball-carrying, and timing into advanced areas. He plays with composure in build-up, often acting as an extra midfielder, but still engages defensively with energy—willing to duel, recover in transition, and track runners. His profile fits the current top-level model: a fullback who can drive possession, stretch the pitch, and still hold his own in defensive phases rather than being a winger in disguise.
Minutes Played	943	
Goals	0	
Assists	1	
Average Rating	6.99	
Dribble Success %	73.1%	
Pass Accuracy	84.1%	
Duels Won %	68.4%	



Lewis Hall

Defender • 21 yrs • Newcastle United • Premier League • 2025/2026
England • Left foot • 179cm • Contract: June 2029



ATTACKING

GOALS

0.00

36

ASSISTS

0.10

78

SHOTS

1.15

94

SHOTS ON TARGET

0.19

63

XG

0.06

65

XGOT

0.06

74

SUCCESSFUL DRIBBLES

1.81

99

DRIBBLE SUCCESS %

73.1%

80

CHANCES CREATED

1.05

88

BIG CHANCES CREATED

0.38

94

BIG CHANCES MISSED

0.10

22

PASSING

ACCURATE PASSES

43.81

62

PASS ACCURACY %

84.1%

56

PASSES IN FINAL THIRD

8.21

88

KEY PASSES

1.05

87

CROSSES ACCURACY

0.67

84

THROUGH BALLS

0.00

37

LONG BALLS

4.29

DEFENDING

TACKLES

2.67

86

INTERCEPTIONS

1.62

90

BALL RECOVERY

4.68

86

CLEARANCES

3.44

36

BLOCKS

0.48

49

DUELS WON

7.64

99

DUELS WON %

68.4%

66

AERIALS WON

1.72

52

DISCIPLINE & OTHER

FOULS DRAWN

1.43

91

FOULS COMMITTED

0.48

84

YELLOW CARDS

0.10

68

TOUCHES

83.03

90

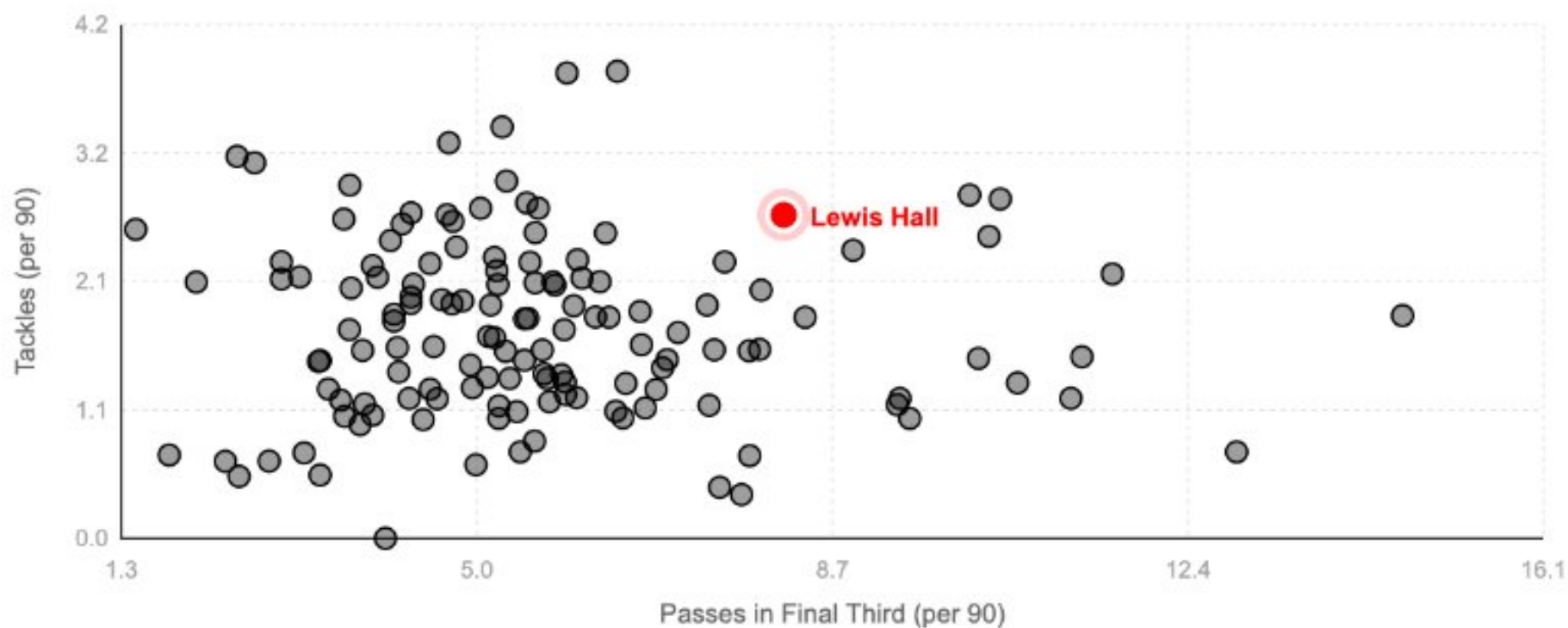
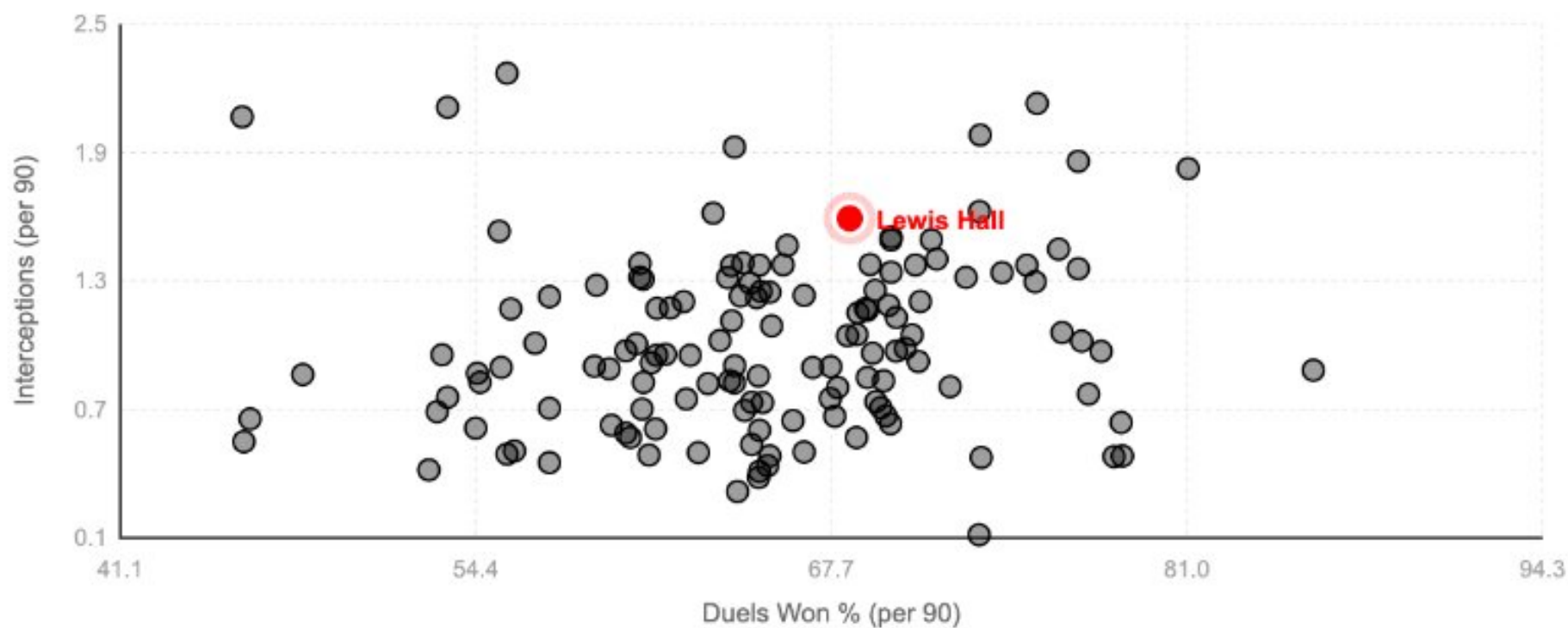
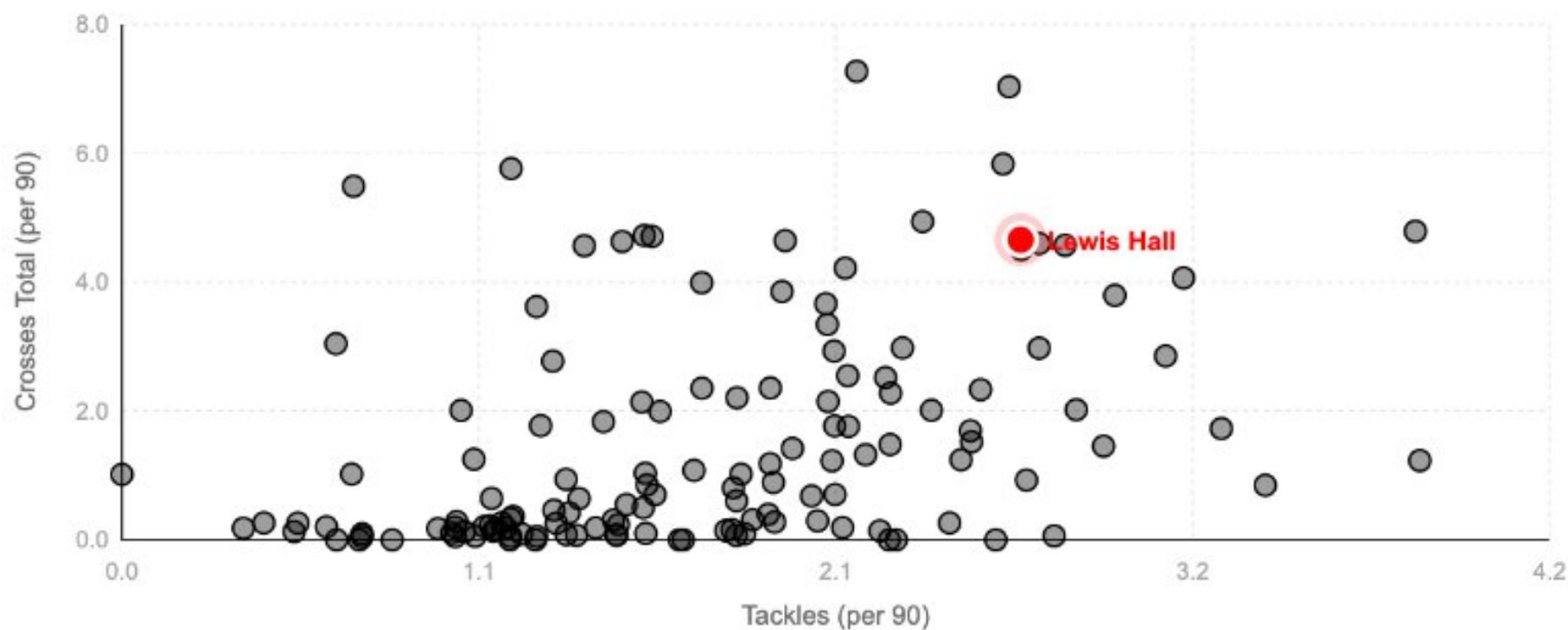
RATING (AVG)

6.99

88

Lewis Hall

Defender • 21 yrs • Newcastle United • Premier League • 2025/2026
England • Left foot • 179cm • Contract: June 2029



Lewis Hall

Defender • 21 yrs • Newcastle United • Premier League • 2025/2026
England • Left foot • 179cm • Contract: June 2029



Conclusion

Lewis Hall is an English left-back currently plying his trade with Newcastle United in the Premier League, having joined permanently in the summer of 2024 after a loan spell from Chelsea FC. He emerged from the Chelsea academy, where he trained from age U8 and made his senior debut in 2022 before moving up north to establish himself as a regular starter. Hall has also broken into the England senior national team, earning caps beginning in late 2024.

Hall's game is defined by his modern fullback profile—he combines solid defensive fundamentals with meaningful attacking involvement. Per advanced data over the 2024–25 season, his creative output (assists and expected assists) sits above average among full-backs in major European leagues, and he registers key passes at a rate that reflects a proactive role in build-up and final-third progression. He's also involved in a high volume of progressive actions, linking phases of play and advancing possession from his side.

Defensively, Hall shows good tackling and positioning for his position. He engages in duels and contributes to defensive phases consistently, a sign he's not a one-dimensional attacking outlet. His tackling, defensive awareness, and positioning are some of his strengths that allow him to be reliable in duels and transitional situations.

Physically, Hall isn't the most imposing defender, registering average height at 179cm. He doesn't dominate physically against stronger, more aggressive opponents, but compensates with intelligence, game reading, and technical quality. These traits suit systems that prioritize structure and ball control over sheer physicality.

Tactically, Hall's versatility stands out. He has been deployed in transitional roles and can play slightly advanced as a left midfielder in build-up phases, showing comfort on the ball and awareness of central spaces—a hint of his technical grounding from midfield development in Chelsea's academy.

In summary, Hall is beyond raw potential—he is already a first-team contributor for a top team in a top league. His profile fits the modern fullback: he can defend responsibly, break lines with passing, and support attack through progressive actions. The key developmental vectors for his next stage will be physical robustness and consistency across 90+ minutes, along with continued refinement of defensive positioning at the highest level.