

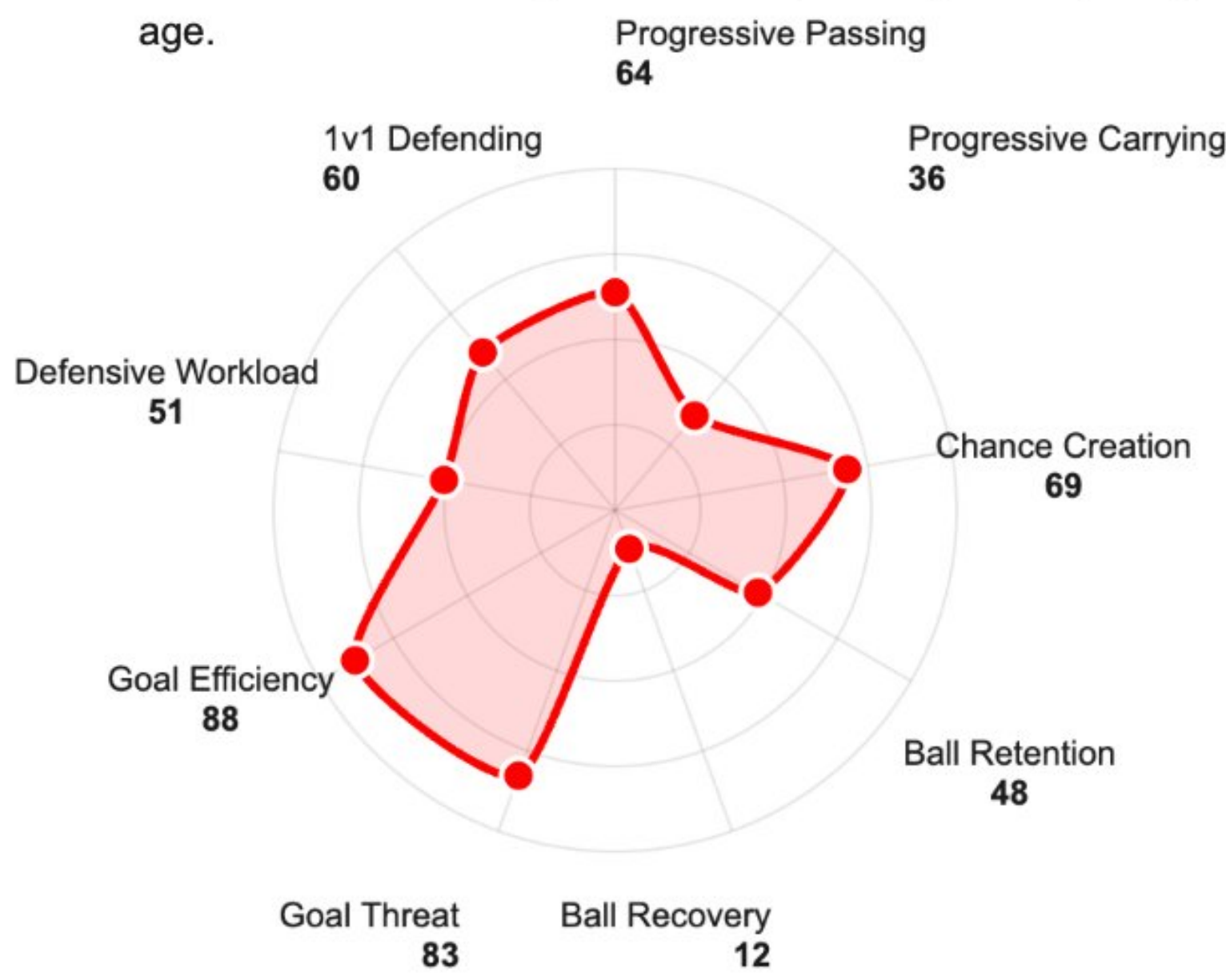
Matías Soulé

Attacker • 22 yrs • Roma • Serie A • 2025/2026
Argentina • Left foot • 182cm • Contract: June 2029



Games Played	20
Minutes Played	1361
Goals	6
Assists	4
Average Rating	7.12
Dribble Success %	34.9%
Pass Accuracy	82.7%
Duels Won %	44.8%

Matías Soulé is a left-footed winger born in 2003, and he developed in Vélez Sarsfield's academy before moving to Juventus as a teenager and progressing through their youth system. After limited first-team opportunities in Turin, he was sent on loan to Frosinone, where he became the creative reference point of the team despite their struggles as a team. Primarily operating off the right, Soulé plays as an inverted winger who wants to receive wide, isolate his defender, and drive inside onto his stronger foot. He combines South American flair with European tactical schooling, showing comfort both in possession phases and in open, transitional moments. His game is built around ball progression through the wide areas, individual creation, and end-product. He has already proved himself by taking on the responsibility of being a team's main attacking outlet in a Top 5 League at a young age.

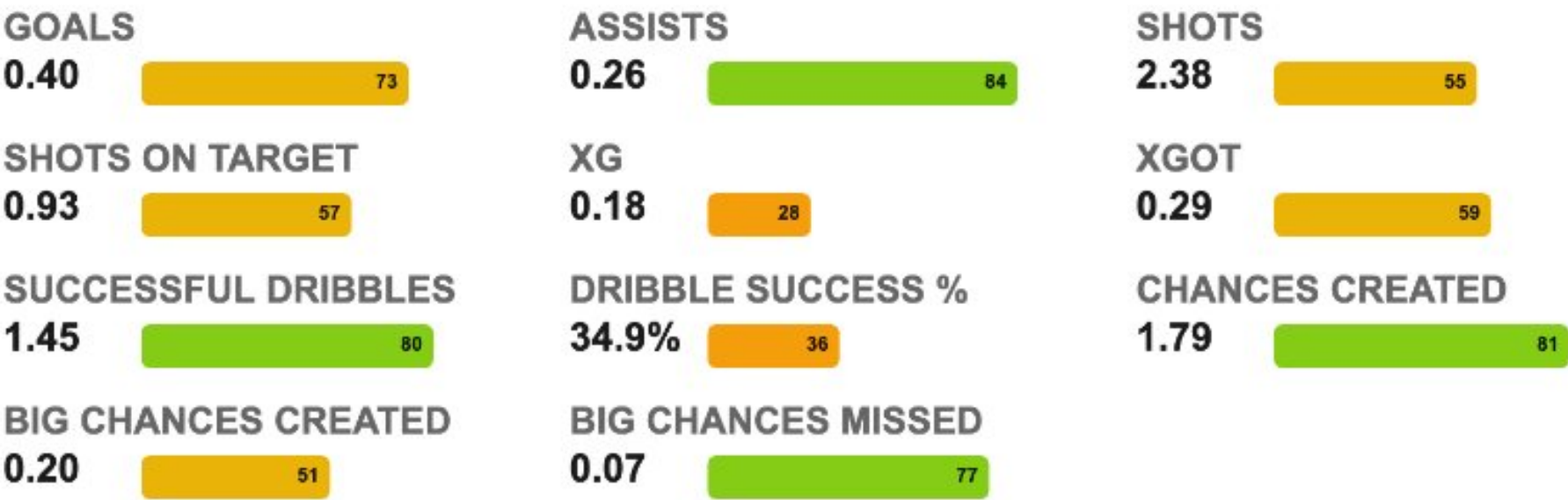


Matías Soulé

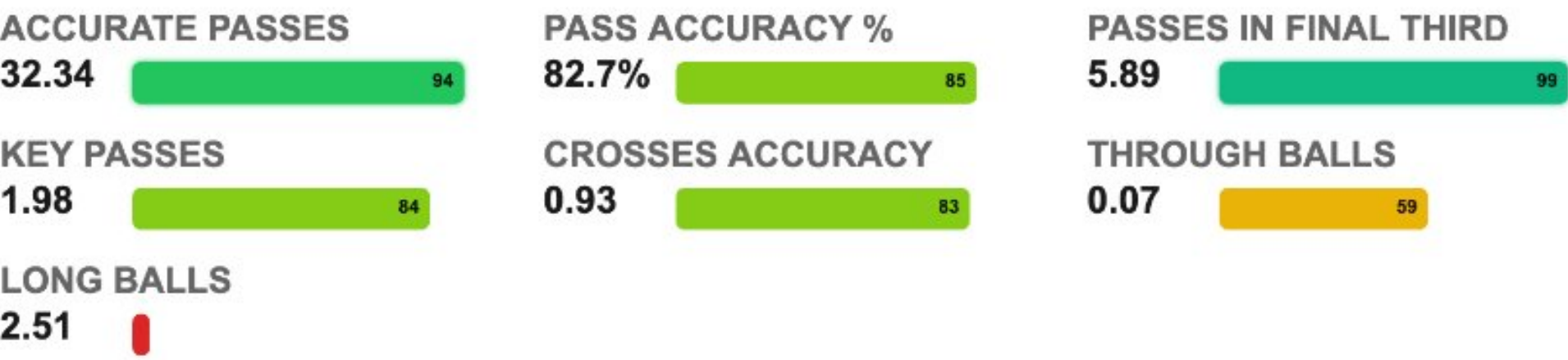
Attacker • 22 yrs • Roma • Serie A • 2025/2026
Argentina • Left foot • 182cm • Contract: June 2029



ATTACKING



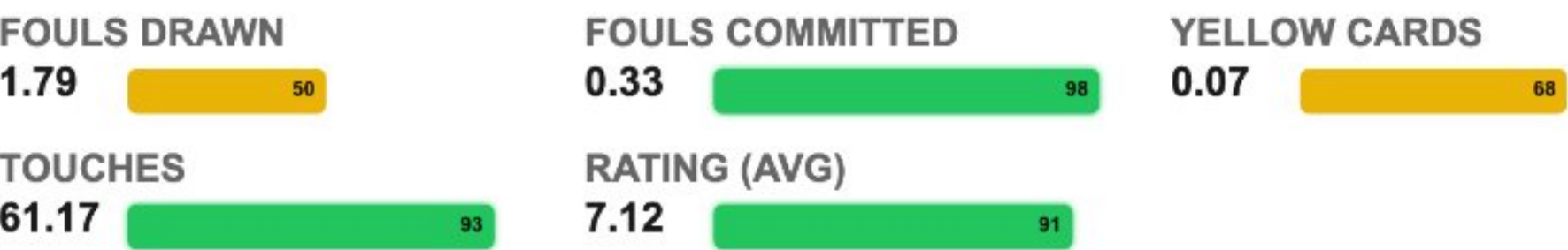
PASSING



DEFENDING



DISCIPLINE & OTHER



Matías Soulé

Attacker • 22 yrs • Roma • Serie A • 2025/2026
Argentina • Left foot • 182cm • Contract: June 2029



Conclusion

Throughout his time at Roma, Soulé has entered a very different environment from his time at Frosinone. He's no longer the sole creative outlet in a survival-side, but part of a squad with higher expectations, stronger structure, and more competition for minutes. He is learning to operate within a team that prioritizes structure, spacing, and collective rhythm, while still trying to assert the individuality that makes him dangerous. His minutes have been more situational, and that shift has clarified both his upside and the gap that remains between being a specialist weapon and a dependable, week-to-week starter at top-club level.

What remains clear with Matías is that his ability to destabilize low/defensive blocks is rare. He continues to be most dangerous when isolated on the right, facing defenders 1v1 and driving inside onto his left foot. Few wide players in his age bracket manipulate defenders with the same rhythm and composure. Even in reduced minutes, he shows an instinct for high-value actions—shots from central lanes, cut-backs from the half-space, and disguised passes after drawing pressure. He doesn't need volume to influence the match; his profile is built around creating moments that shift the game-state.

The challenge now is turning that talent into reliability within a higher-functioning team. Off-ball engagement, defensive continuity, and speed of decision in transition remain the swing factors. At Roma, these details matter more than they did at Frosinone, where his freedom was most likely prioritized over structure. Physically, he is still adjusting to defenders who close space faster and impose themselves earlier.

His next step should be defined by role clarity. Whether this is at Roma or at a new club, Soulé needs a season where he is trusted as a primary wide attacker in a competitive side, not just an impact option. Another year oscillating between roles risks stalling the rhythm that made him so dangerous. With consistent minutes in a tactically demanding environment, he projects as a high-level inverted winger capable of deciding matches at the top end of the game. He already has the tools his task now is converting those flashes of brilliance into consistent and sustainable output.