



# OPPOSITION VIDEO REPORT



# BEDFORD TOWN OPPOSITION REPORT



**BEDFORD  
TOWN**

**GOALSCORERS:**

Godden 59'

**DATE: 20/12/25**  
**NATIONAL LEAGUE NORTH**



**HALF TIME SCORE**

**0 - 1**

**1 - 1** FT



**MARINE  
AFC**

**GOALSCORERS:**

Jolley 23'

**VENUE-** EYRIE STADIUM, CARDINGTON, BEDS.

**KICK OFF:** 3PM    **ATT:** 799

**WEATHER:** CLEAR / **PITCH CONDITIONS:** GOOD, SYNTHETIC.



**STARTING XI's**

20.12.25 | THE EYRIE STADIUM

**STARTING XI**

- 24 ASHMORE (GK)
- 6 TAYLOR
- 10 MARSH ©
- 12 DOHERTY
- 15 SANDIFORD
- 20 GODDEN
- 23 CHICKSEN
- 25 DAWODU
- 32 MAJA
- 33 EBANKS
- 37 PHILLIPS

- 5. MENSAH
- 8. GYAMFI
- 11. BLACKMAN
- 13. MEWITT
- 18. E BROWN
- 21. INMAN

**SUBS**

**STARTING XI**



- 1. Barnsley
- 2. Brown
- 3. Samuels-Smith
- 21. Wardle (c)
- 12. Anson
- 26. Drysdale
- 14. Thomas
- 24. Curran-Nicholls
- 7. Sinclair-Smith
- 11. Marsden
- 17. Jolley

Sub-Mariners:

- 33. McIntyre
- 15. Bell || 19. Roberts
- 20. Huby || 25. Fielding



# BEDFORD TOWN OPPOSITION REPORT

## STARTING FORMATIONS

### BEDFORD TOWN 4-2-3-1

### MARINE AFC 4-3-3



## TEAM'S PREVIOUS FORM (LAST 4 RESULTS)

3 - 1

3 - 4

2 - 2

1 - 2



P'BORO  
SPORTS  
(A) LOSS



DARLINGTON  
(H) LOSS



S'BORO  
(A) DRAW



M'FIELD  
FC  
(H) LOSS

# BEDFORD TOWN OPPOSITION REPORT

## TEAM'S 1<sup>st</sup> IX PLAYER INFORMATION

No	PLAYER	P	A	F	H	B	OBSERVATIONS	R
24	NATHAN ASHMORE	GK	35	R	1,88 M	TALL ATH	Delivers ball long up-field to CF & attacking wingers. Long balls are accurate. Made an important stop early on from opposition No7, saved down to his left-hand side. Also showed a rash side to his, coming out to the edge of his box, a poor clearance & giving the ball to the opponent mid way into his own half. A more clinical player may have attempted a shot & punished them with a goal. Also made an important stop on 88mins down to his left, got his side a point with that save.	B
6	GREG TAYLOR	CB	35	R	1,86 M	TALL ATH	A tall & imposing centre back. Capable in the air, winning aerial balls against the opponent forwards. He was moved out to the LB position 2 <sup>nd</sup> half in a tactical change, doing well & working well with the subbed on No8.	B
10	TYRONE MARSH ©	LW	31	R	1,80 M	TALL ATH	The team Captain. Played CF in this match as a 'Target Man'. Showed good mobility, able to get around the attacking third & press the opposition. He moves across the defence to make marking challenging for them. He's not great aerially overall, but better into feet. Does attempt flick-ons.	B
12	RYAN DOHERTY	CB	25	R	1,82 M	TALL ATH	Another tall CB in the team. Showed bravery, getting his head into danger & clear the ball. He can dominate in aerial duels.	B
15	GREG SANDIFORD	RB	20	R	1,78 M	TALL ATH	Clears right footed down the wing to get his side up the pitch. Initially his target was No25, but he went off injured. He goes forward to help in attacks & also tracks back, not leaving much space behind him to exploit. Takes throw-ins on the right-hand side & also free-kicks from deeper positions.	B
20	JAGO GODDEN	CM	21	R	1,93 M	TALL ATH	Mobile & gets around the midfield area & into forward areas. He scored on 59 minutes, drifting over to the right wing. Scoring a fortunate goal which looked like a cross initially, flying over the keeper & hitting the far post & going in.	B
23	ADAM CHICKSEN	LB	34	L	1,73 M	AVE ATH	I didn't really see anything of note from Chicksen. He was subbed off at HT, for what looks like a tactical change. He could have picked up a knock, but I didn't notice this myself.	C
25	JOSH DAWODU	RB	25	R	1,77 M	TALL PHY	A player with a quick burst of pace, who was playing down on the RW position. He was looking to beat his man & showed he can get a decent cross in with his right foot. He did demonstrate some poor control on the ball, with it bouncing away from him & losing possession. He's also not that effective in aerial duels. Unfortunately, he went off injured on 42 after a heavy challenge on him. Looked like a lower leg injury.	C
32	EMMANUEL MAJA	CM	24	R	1,73 M	AVE ATH	Playing in CM. Picked up a yellow card early in the first half for a rash foul outside the box. He did show that he has good control of the ball, especially receiving it at chest height. He had a more influential & productive 2 <sup>nd</sup> half of the match. The tactical changes, enabled him to make more of an impact, showing his pace & dribbling skills. He became the team's engine in midfield, driving forward & making things happen. Bedford's best player.	B

# BEDFORD TOWN OPPOSITION REPORT

## TEAM'S 1<sup>st</sup> IX PLAYER INFORMATION CONT...

No	PLAYER	P	A	F	H	B	OBSERVATIONS	R
33	CALLUM EBANKS	CF	23	R	1,86 M	TALL ATH	Involved in the attacking play from an attacking midfield role, in attack stepping up to be alongside the No 10 up front. He was another attacking player whose touch wasn't great, but he showed determination in closing opponents. He had an opportunity to get a shot away on 19 mins, but his execution was poor.	C
37	JOSH PHILLIPS	ST	20	L	1,75 M	AVE ATH	Phillips played out on the LW. He has a fair amount of pace & was looking to beat the RB & get crosses into the danger area. He wasn't great in aerial duels.	C

## TEAM'S SUBSTITUTE INFORMATION

No	PLAYER	P	A	F	H	B	SUB OBSERVATIONS	R
5	CARL MENSAH	CB	29	R	1,87 M	TALL PHY	Subbed on at HT. A big & imposing CB, playing on the right side of the 2 CB's. Aerially dominant. Decent with the ball at his feet. Don't recollect him losing out on any duels. A solid defender & had a positive impact for his team. Probably should have started the game in my opinion.	B
8	JUNIOR GYAMFI	CM	21	R	1,70 M	SHO ATH	Subbed on 45 mins, due to injury to No 25. Junior came on, to play out on the LW before HT. He's not the tallest of players, but he is quick, has good feet & shows intelligence on the ball. He can create openings with his creativity & is one to watch if he plays. He also shows good communication & leadership skills on field for a young player. Could be to watch for the future for Leamington?	B
11	RYAN BLACKMAN	DM	30	R	1,77 M		<b>*UNUSED*</b>	
13	MEWITT	GK	26	R	1,83 M		<b>*UNUSED*</b>	
18	ELLIS BROWN	LM	22	L	1,77 M		<b>*UNUSED*</b>	
21	RYAN INMAN	CM	29	R	1,80 M		<b>*UNUSED*</b>	

**THE NEXT SLIDES HAVE THE ANNOTATED EVENT PICTURES. I HAVE DONE MY BEST TO MARK UP PLAYERS, BUT THE LIGHT & CAMERA MADE IT TOO DIFFICULT FOR ME TO BE TOTALLY CONFIDENT OF WHO WAS WHERE & TO BE ABLE TO IDENTIFY PLAYERS WITH CERTAINTY!**

## TEAM SHAPE (WITHOUT THE BALL)



When defending, Bedford were defending in numbers, everyone coming back into their own half. The No 20 dropping into central defence to help make a back 5. The midfielders creating a 4 & the striker offering the sole outlet.



**ALL 11 BEDFORD PLAYERS BACK DEFENDING 1<sup>ST</sup> HALF**

# BEDFORD TOWN OPPOSITION REPORT

## TEAM SHAPE (WITH THE BALL)



**DEFENDING SET PLAYS (CORNERS)**



**1<sup>ST</sup> HALF (16 MINS) DELIVERED INTO 6 YARD BOX**



**2<sup>ND</sup> HALF (85 MINS) DELIVERED INTO 6 YARD BOX, HIT THE BAR**

**ATTACKING SET PLAYS (CORNERS)**

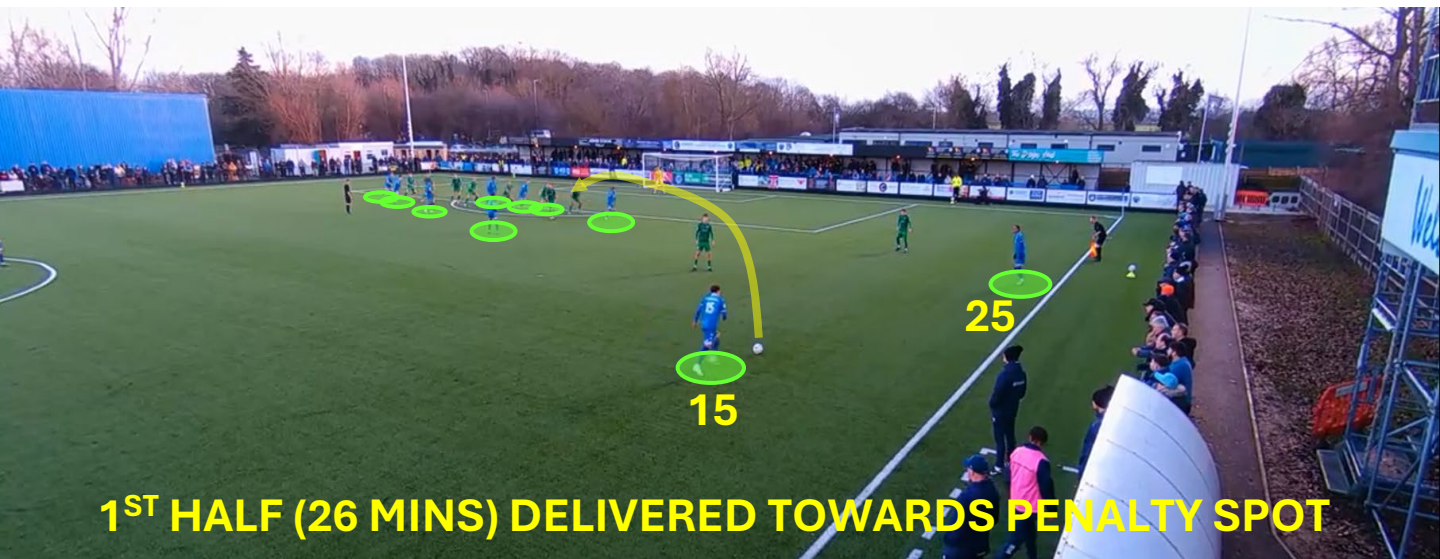


**1<sup>ST</sup> HALF CORNER KICK IN-SWINGER(10 MINS)  
DELIVERED TO BACK POST**



**2<sup>ND</sup> HALF CORNER KICK DELIVERED SHORT,  
OUTSIDE PENALTY AREA. SHOT OVER THE BAR**

**ATTACKING SET PLAYS (FREE KICKS)**



**DEFENDING SET PLAYS (FREE KICKS)**



**1<sup>ST</sup> HALF FREE KICK EARLY ON, DELIVERED TOWARDS PENALTY SPOT**



**2<sup>ND</sup> HALF FREE KICK (80 MINS) DELIVERED TOWARDS PENALTY SPOT, SHOT SAVED, CONCEDE A CORNER KICK.**

**ATTACKING SET PLAYS (THROW INS)**



## GOALS

### 1<sup>ST</sup> GOAL: MARINE (23 MINS) JOLLEY



### 2<sup>ND</sup> GOAL: BEDFORD (59 MINS) GODDEN



## MATCH OBSERVATIONS

### ATTACKING:

- Play very direct
- GK plays long to CF or Wings
- Get players forward
- Commit players forward for set-pieces
- Set-pieces delivered in towards 6- yard box area
- Have more success attacking down their left-hand side, although their goal came down the right-hand side.

### DEFENDING:

- Defenders have height & can dominate aerially
- Play a high defensive line
- Play a 5-4-1 formation when in defensive transition
- Everyone back to defend set-pieces except the striker

### STRENGTHS:

- A physical side
- Some tall players who dominate aerial duels
- Strong down their left-hand side, especially when No8 came on
- Win free-kicks in dangerous positions around the penalty area.
- Showed determination & drive to get back into the game in the 2<sup>nd</sup> half

### WEAKNESSES:

- I noticed a substantial gap between the defence & midfield that could be exploited
- Play a high line, that is susceptible to balls over the top, especially with quick players
- Front players not great in aerial duels
- Can concede a lot of free-kicks around their penalty area through desperation to retrieve the ball back after possession lost

## MATCH SUMMARY

Bedford started off the match on the back foot. They were very much 2<sup>nd</sup> best all over the pitch compared to Marine. They were giving possession away regularly & set-piece opportunities around their box. There seemed to be a gap between their defence & midfield that Marine exploited. Bedford defenders were winning aerial balls, but not heading them far enough away, leading to the Marine goal on 23 minutes, the ball being lobbed into the box & headed in. The game was a physical one & there were a lot of solid challenges going in, one leading to the injury & substitution of Bedford No25 before half time & the introduction of No8. Marine deserved their 1<sup>st</sup> half lead.

2<sup>nd</sup> half, the introduction of No's 5 & 8 made a positive impact for Bedford. They became very effective down their left-hand side through No's 6, 8 & 37. No's 8 & 32 also worked well together in the central left midfield area. No32 became the engine for the team in the centre of midfield, he was very influential & drove the team forward. There was a lot of joy down the left for Bedford, winning corners & free kicks, Marine not enjoying the same impact as they had 1<sup>st</sup> half. Despite the better play down their left wing, it was from the right side that they equalised on 59 minutes through Godden. A cross that went over the GK, hit the far post & went in. Bedford provided the pressure pretty much up until full time, failing to capitalise on their momentum. Marine nearly nicking the 3 points on 88 minutes, a good save down to his left for the GK. On my viewing, a draw probably a fair result. Both sides controlling a half each.

**RESOURCES USED FOR REPORT**

**WEBSITES:**

[www.footballwebpages.co.uk](http://www.footballwebpages.co.uk)

[FotMob - Football Live Scores](#)

[Hudl • The leader in sports technology, video analysis & data](#)

[Football transfers, rumours, market values and news | Transfermarkt](#)

CLUBS SOCIAL MEDIA FOR GAME STARTING IX's

**MEDIA SOFTWARE:**

MS POWER POINT

REPORT COMPILED BY:

**ANDY CLIFFORD**