



# BRISTOL ROVERS OPPOSITION REPORT



19<sup>TH</sup> December 2025

## EFL LEAGUE TWO

VENUE – MORNFLAKE STADIUM, CREWE.

(ATT:9,125 )

WEATHER: CLEAR/CHILLY

PITCH: GRASS, GOOD CONDITION

HALF TIME SCORE

1 – 1

**1 – 1** FT



**CREWE  
ALEXANDRA**

GOALSCORER:

TEZGEL 9'



**BRISTOL  
ROVERS**

GOALSCORER:

MORTON 12'





# BRISTOL ROVERS OPPOSITION REPORT



## STARTING XI's



**Friday 19 December 2025**  
**7.45pm kick off**

### Crewe Alexandra



Manager: **Lee Bell**

- 13 Sam Waller (GK)
- 2 Lewis Billington
- 3 Reece Hutchinson
- 6 Max Sanders
- 18 James Connolly
- 19 Owen Lunt
- 20 Calum Agius
- 24 Josh March
- 26 Tommi O'Reilly
- 29 Adrien Thibaut
- 36 Emre Tezgel

#### Subs

- 1 Tom Booth (GK)
- 4 Jay Mingi
- 14 Charlie Finney
- 15 Dion Rankine
- 22 Phil Croker
- 23 Jack Powell
- 31 Louis Moulton

### Bristol Rovers FC



Manager: **Steve Evans**

- 1 Luke Southwood (GK)
- 3 Jack Sparkes
- 4 Taylor Moore
- 5 Alfie Kilgour (C)
- 6 Clinton Mola
- 11 Luke Thomas
- 20 Josh McEachran
- 22 Kamil Conteh
- 24 Alife Chang
- 29 Fabrizio Cavegn
- 39 Callum Morton

#### Subs

- 13 Brad Young (GK)
- 7 Shaq Forde
- 10 Ruel Sotiriou
- 14 Joel Cotterill
- 27 Bryant Bilongo
- 28 Stephan Negru
- 43 Ollie Dewsbury

### Officials

Referee M Barlow  
Assistant # 2 M Jones

Assistant #1 A Moore  
Fourth Official M Moss

## STARTING FORMATIONS

### CREWE ALEXANDRA 4-2-3-1



### BRISTOL ROVERS 5-3-2



## INJURED & SUSPENDED PLAYERS






### CREWE ALEXANDRA

MICKEY DEMITRIOU  
+ 6 MORE PLAYERS

### BRISTOL ROVERS

ELLIS HARRISON  
MACULEY SOUTHMAN-  
HAYLES

### BRISTOL ROVERS LAST 5 RESULTS

0-1	2-2	1-0	4-0	0-3
				
NOTTS COUNTY (H) LOST	C'BRIDGE UNITED (H) DRAW	PORT VALE (A) LOST	BARNET (A) LOST	SWINDON TOWN (H) LOST

## OTHER FORMATIONS VIEWED

4-1-2-1-2  
USED IN ATTACKS  
(POST CREWE RED CARD)



3-4-3  
USED IN ATTACKS  
(POST CREWE RED CARD)



4-5-1  
(GRAPHIC ON LEFT)  
FORMATION USED IN LATTER  
STAGES OF THE GAME, TO  
TRY & SEE THE RESULT OUT.





# BRISTOL ROVERS OPPOSITION REPORT



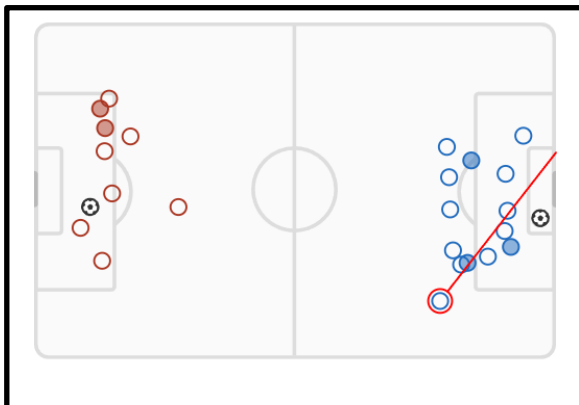
## MATCH STATISTICS AT FULL TIME

### (Bristol Rovers – Blue Stats)

37%		63%
0.76	Expected goals (xG)	1.40
10	Total shots	15
3	Shots on target	3
1	Big chances	0
1	Big chances missed	0
142 (60%)	Accurate passes	320 (77%)
10	Fouls committed	20
3	Corners	3

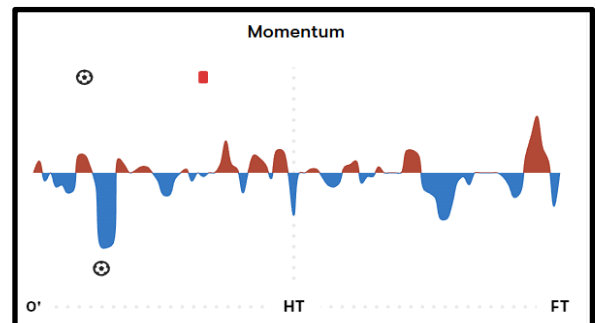
10	Total shots	15
4	Shots off target	4
3	Shots on target	3
3	Blocked shots	8
0	Hit woodwork	1
8	Shots inside box	7
2	Shots outside box	8

8	Tackles	11
4	Interceptions	8
8	Blocks	3
39	Clearances	29
2	Keeper saves	2



59	Duels won	42
37 (61%)	Ground duels won	24 (39%)
22 (55%)	Aerial duels won	18 (45%)
10 (59%)	Successful dribbles	3 (60%)

Expected goals (xG)		
0.76	Expected goals (xG)	1.40
0.60	xG open play	1.36
0.17	xG set play	0.03
0.76	Non-penalty xG	1.40
1.02	xG on target (xGOT)	1.23



Stats from the match, showing Rover's dominance with possession overall, better passing accuracy & getting more shots away than their opponents. The red card for Crewe must be factored into this however. Despite the extra player advantage, they did however lose out in duels to their opponent.



# BRISTOL ROVERS OPPOSITION REPORT



## BRISTOL R'S IX PLAYER INFORMATION

No	PLAYER	P	F	H	B	OBSERVATIONS	R
1	Luke Southward	GK	R	1.85 (M)	TALL /ATH	Can play out from the back long & direct up to 'Target Man' No39, play out short to CB's. Comfortable with catching crosses. Had no chance with the goal conceded on 9 mins. Showed bravery to come out & save a header on 17 mins, getting clattered in the process. Also made an important save with his foot on 41 mins. Lucky to stay on the pitch second half, handling outside the area & only receiving a yellow card.	B
3	Jack Sparkes	LB	L	1.77 (M)	AVE/ ATH	Mobile down the left flank. Puts accurate, first -time crosses into the 6-yard area of the box. I thought they were dangerous & his team didn't capitalise on this. He was very one footed from what I saw. He also received a yellow card on 36 minutes. His general passing is accurate & he is comfortable challenging for headers. He has enough quick pace to beat his full back & whip in a cross. Takes free-kicks & corner kicks.	B
4	Taylor Moore	RCB	R	1.84 (M)	TALL /ATH	Played in a RCB position, drifting out wide when required, but mainly central. Had accurate passing. Showed he can use his weaker foot to control the ball. Comfortable dealing with aerial balls. Takes quick throw-ins on right hand side when required.	B
5	Alfie Kilgour ©	CB	R	1.88 (M)	TALL /ATH	Team Captain. Set up the equaliser for his team, with his direct penetrating pass to get No39 in behind the defence to score. He is a physical defender, strong & comfortable dealing with aerial balls. Second half, He was clearing long over to No7 on the right wing. He also intercepted a dangerous through ball in stoppage time, to stop a Crewe attacker getting a chance in on goal.	B
6	Clinton Mola	LCB	L	1.83 (M)	TALL /ATH	Playing in a LCB position. I think Mola had a tough evening. He was being outmuscled early on by the Crewe attacking players. He got Crewe No39 Thibaut sent off on 29 minutes, grappling his shirt & getting him to react. He also received a yellow card himself. He was fortunate to stay on the pitch, committing further fouls worthy of yellow cards. He plays long balls forward to No39 if given the opportunity. A possible weak link in the team to target, especially for set-pieces around the Rovers box.	C
11	Luke Thomas	AM	L	1.71 (M)	AVE/ ATH	A mobile player, who showed flexibility by playing in multiple positions during the game. He popped up in dangerous areas & could have scored on a couple of occasions, his finishing letting him down(68 & 72 mins). Took set-pieces around the box, takes out-swinging corners. Subbed off on 72 mins.	B
20	Josh McEachran	DM	L	1.78 (M)	TALL /ATH	Playing in CM, DM positions during the game. Also dropping into defence to help make a back 5 when required. Looks to put passes in behind, but mostly lacked accuracy. Was important in a defensive role, contributing with important interceptions.	B
22	Kamil Conteh	CM	R	1.77 (M)	AVE/ ATH	A powerful & strong looking midfielder. His team-mates from defence looked to him to start off moves. His accurate passing & good range meant he could play short or long. He was reliable on the ball, looking to pass forward. He showed he could use both feet, shooting & hitting the post on 70 mins with his left foot.	B



# BRISTOL ROVERS OPPOSITION REPORT



## BRISTOL R'S IX CONTINUED

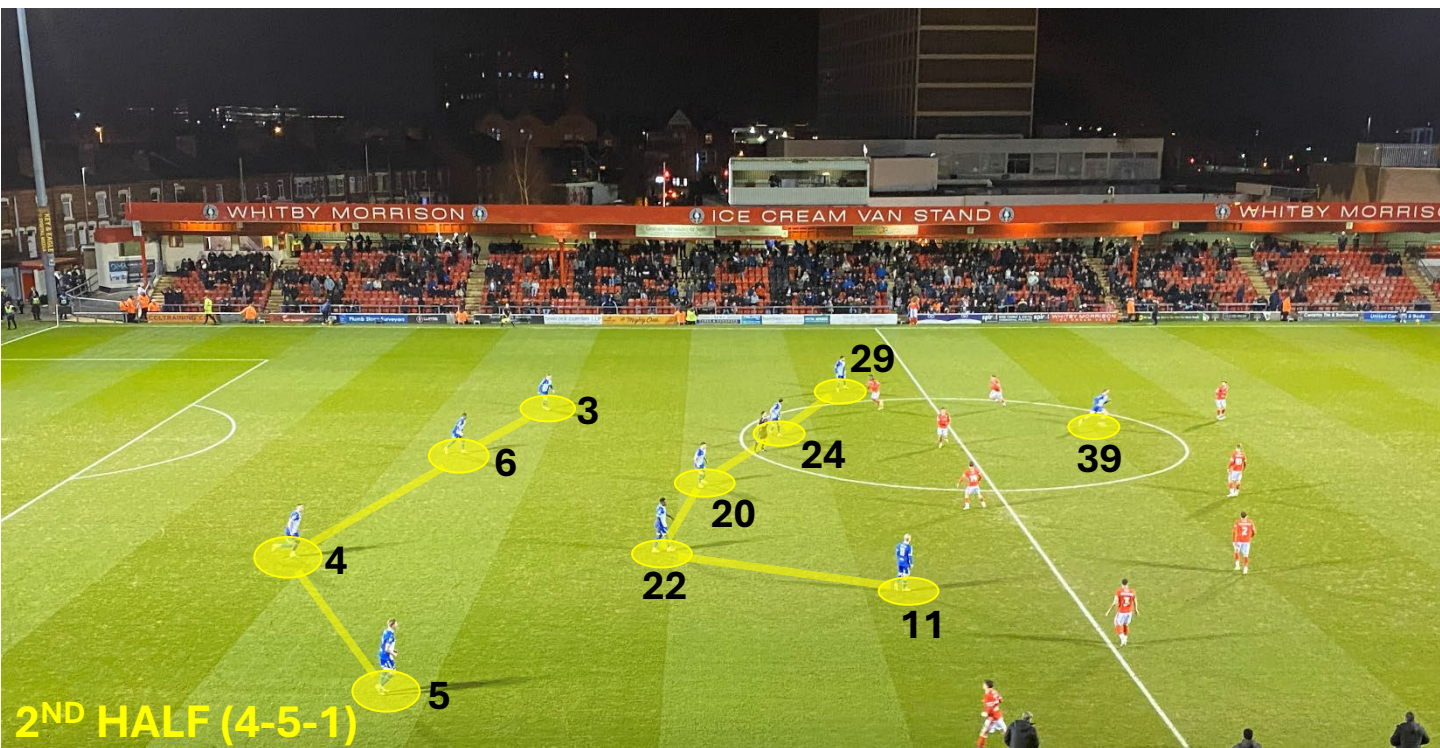
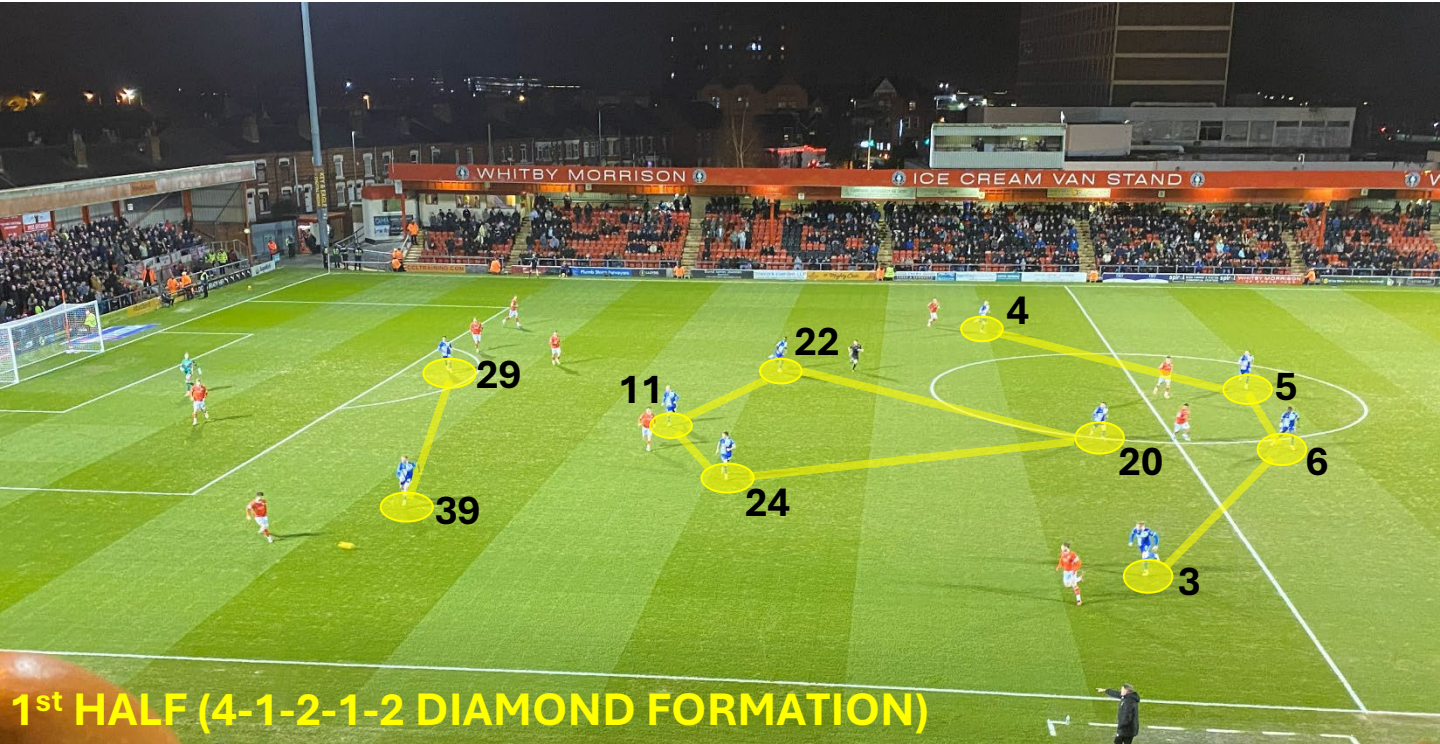
No	PLAYER	P	F	H	B	OBSERVATIONS	R
24	Alfie Chang	CM	R	1.85 (M)	TALL/ATH	Playing in a CM role. Was seen to play in a couple of different positions, DM & on occasions out on the right wing. I did see him attempt a shot from distance, that didn't result in anything of note.	C
29	Fabrizio Cavegn	CF	R	1.75 (M)	AVE/ATH	Showed he has quick pace, which troubles the opposition defence. He swaps sides with his fellow striker No39. He also goes out to the wing on the left-hand side to help there & become a passing option. Not the tallest, so not a major threat with aerial balls, but good control with the ball at his feet. He also caused an opponent to foul him in the 2 <sup>nd</sup> half with a quick turn of pace, getting them a yellow card & Set-piece outside the box. Subbed off on 56 mins.	B
39	Callum Morton	CF	R	1.78 (M)	TALL/ATH	Showed good anticipation & intelligence to run in-between the CB & GK & score on 12 minutes. He is a physical striker, so plays as a 'Target man'. He can hold off opponents but cleverly uses them to get fouls for being too close. He had a good game for me & would have been more dangerous with better service or possibly in a better team. Subbed off on 75 minutes.	A

## BRISTOL R'S SUBSTITUTE INFORMATION

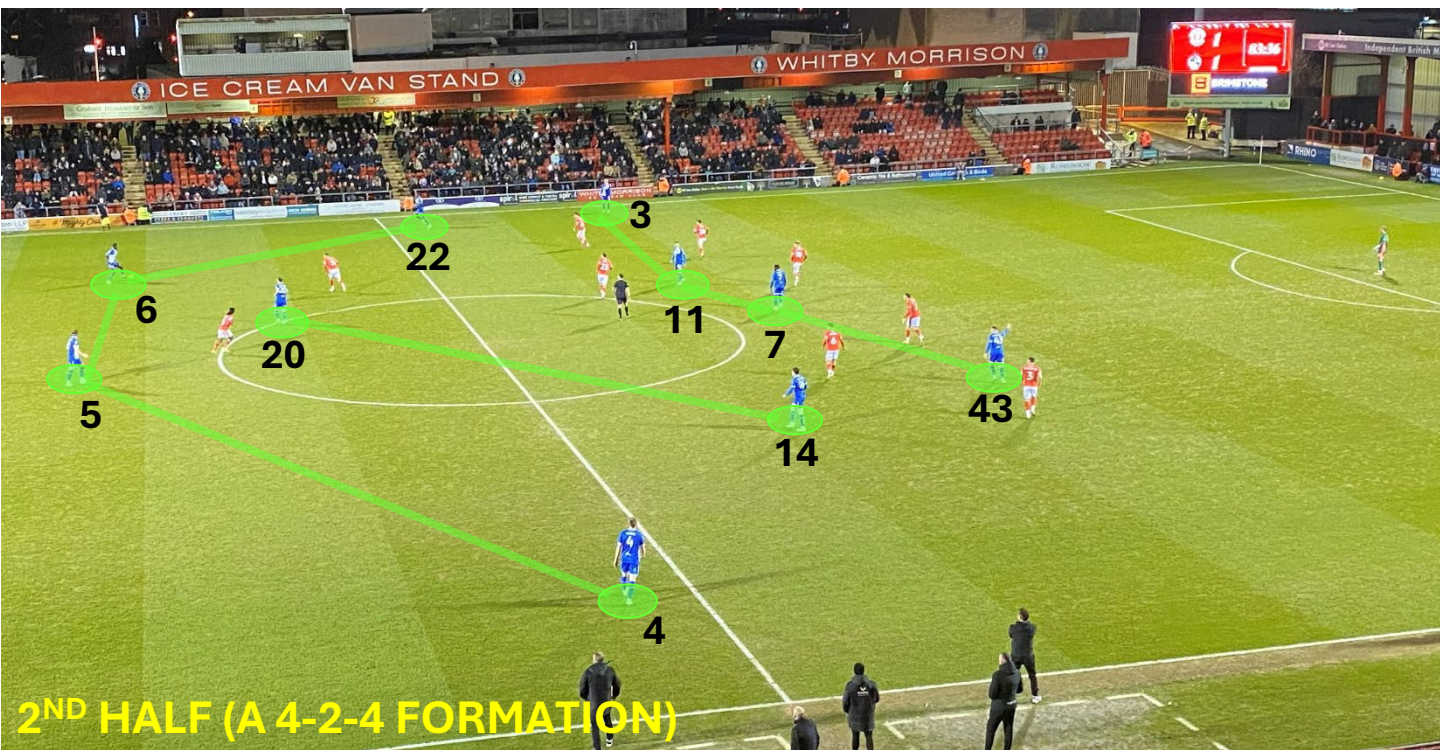
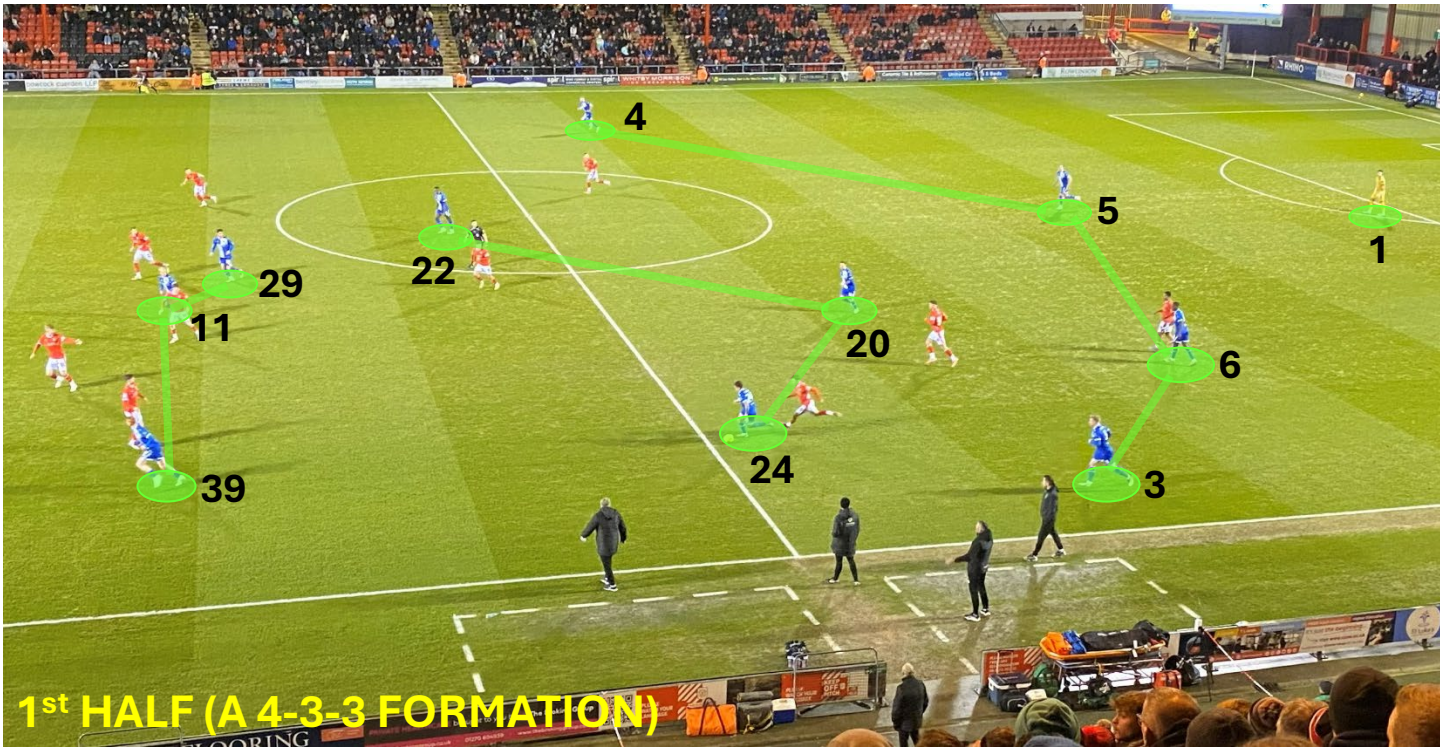
No	PLAYER	P	F	H	B	OBSERVATIONS	R
13	Brad Young	GK	R	1.91 (M)	-	<b>*UNUSED*</b>	-
7	Shaq Forde	RW	R	1.74 (M)	AVE/ATH	On the right wing when he came on. Showed he had quick pace & good vision, a great pass through to No11 (56 mins) who nearly scored. Has quick feet & drew some fouls. Tracks back to help defend on the right-hand side.	B
10	Ruel Sotiriou	LW	R	1.75 (M)	AVE/ATH	On 72 mins. Showed he is physical & gets into challenges, showing some desire & determination. Not on long enough for me to fairly grade him.	-
14	Joel Cotterill	CM	R	1.83 (M)	TALL/ATH	On 72 mins. Seen communicating on field. Not on long enough for me to fairly grade him.	-
27	Bryant Bilongo	LB	L	-	-	<b>*UNUSED*</b>	-
28	Stephen Negru	CB	-	1.86 (M)	-	<b>*UNUSED*</b>	-
43	Ollie Dewsbury	AT	-	-	AVE/ATH	Came on 75 minutes. Saw him communicating on field with team-mates. Helped the team defensively late on in the game, seeing it out to get a point. Not on long enough to fairly rate him.	-

No injuries for Bristol Rovers were spotted by myself. Subs made, looked to me to be for tactical changes & tiredness reasons. No issues with body language noticed either.

## TEAM SHAPE (WITHOUT THE BALL)



## TEAM SHAPE (WITH THE BALL)

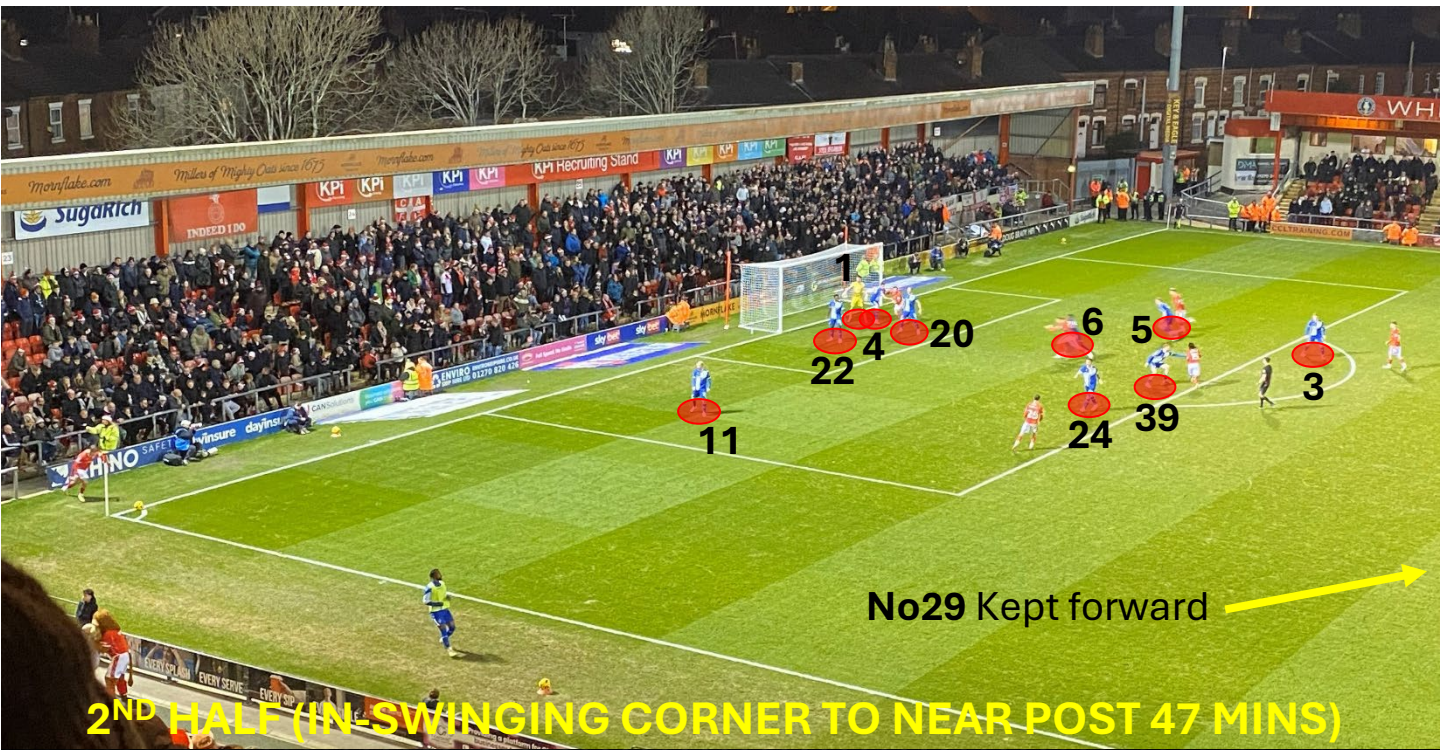




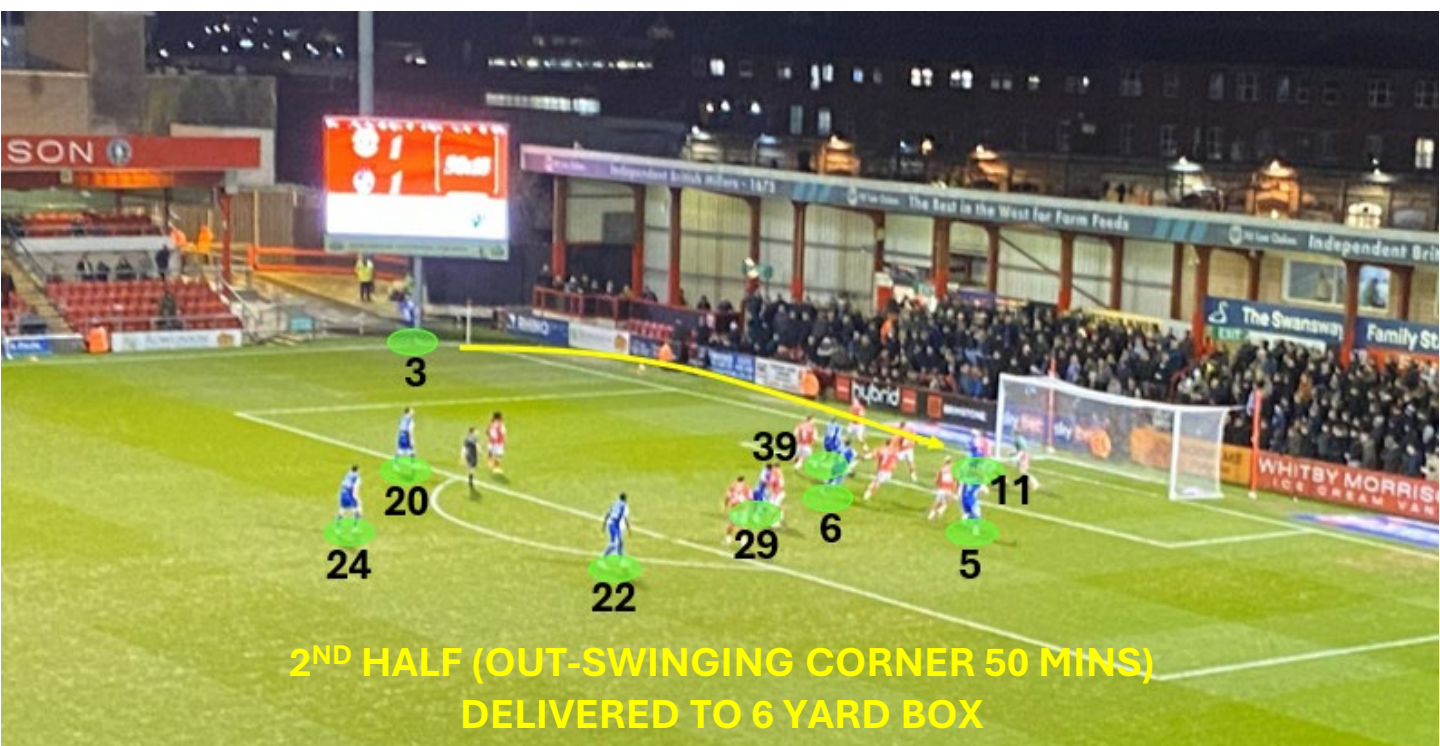
# BRISTOL ROVERS OPPOSITION REPORT



## DEFENDING SET PLAYS (CORNERS)



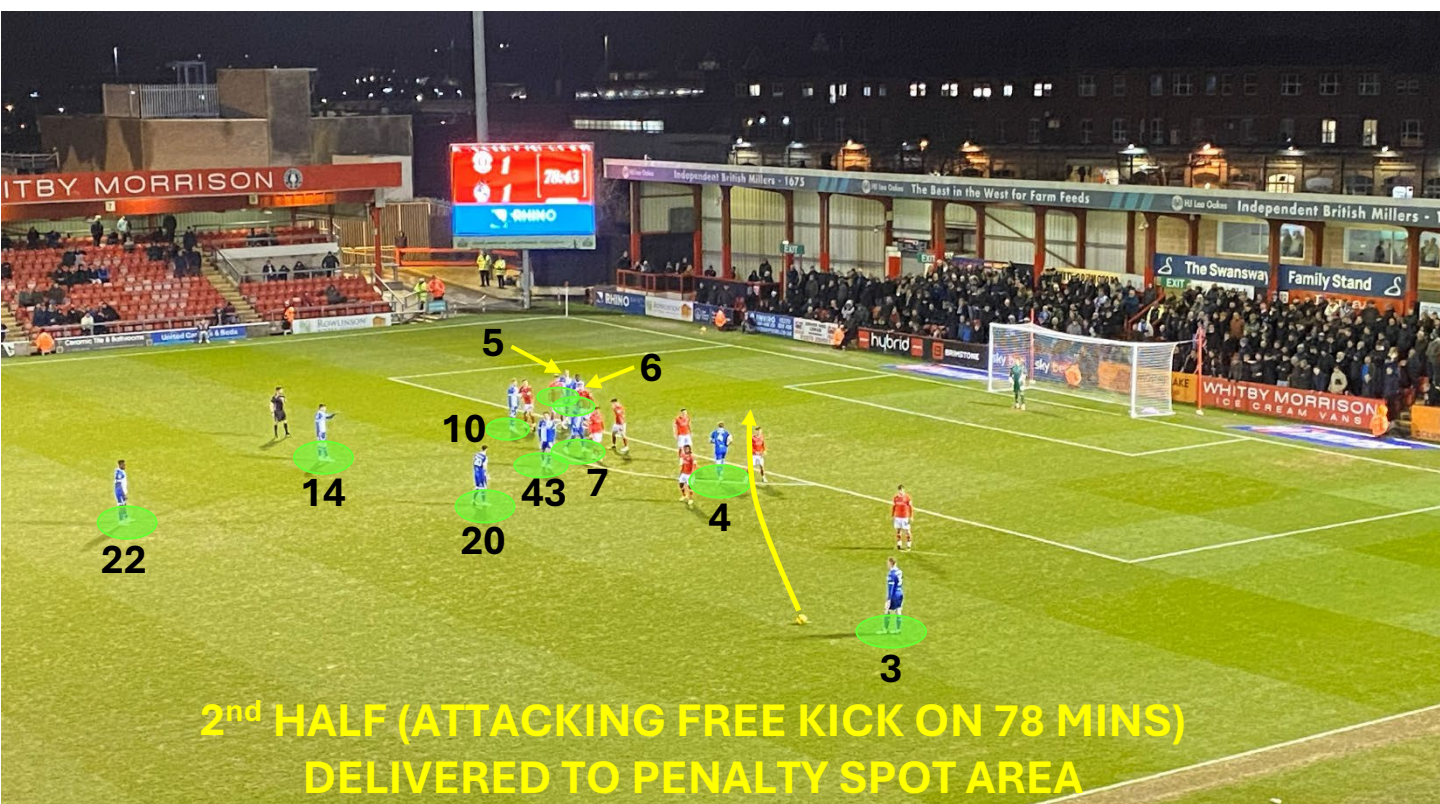
## ATTACKING SET PLAYS (CORNERS)



## DEFENDING SET PLAYS (FREE KICKS)



## ATTACKING SET PLAYS (FREE KICKS)



## DEFENDING THROW-INS



**1<sup>ST</sup> HALF (DEFENDING A LONG THROW IN ON 3 MINS)**

## ATTACKING THROW-INS



**2<sup>ND</sup> HALF (ATTACKING THROW IN SHORT ON 70 MINS)  
No22 ENDS UP HITTING THE POST FROM THIS THROW IN**

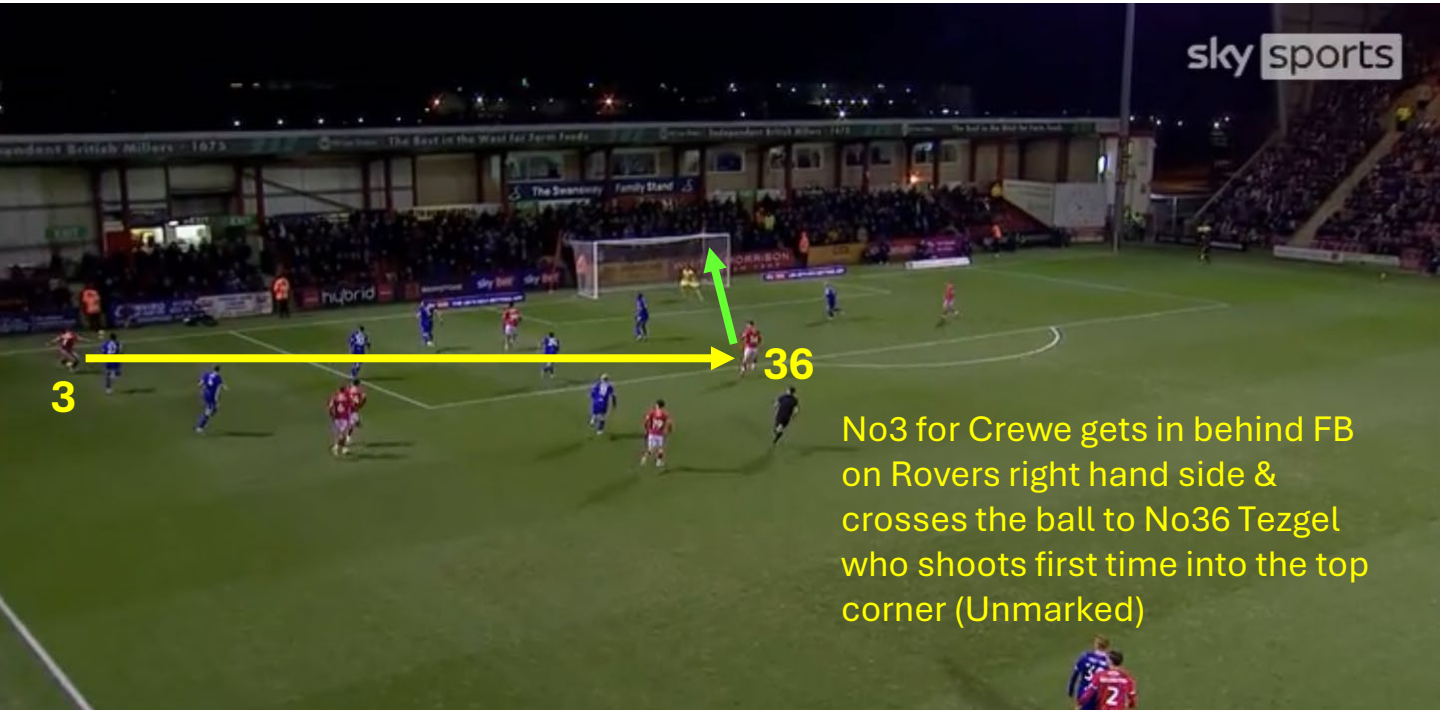


# BRISTOL ROVERS OPPOSITION REPORT



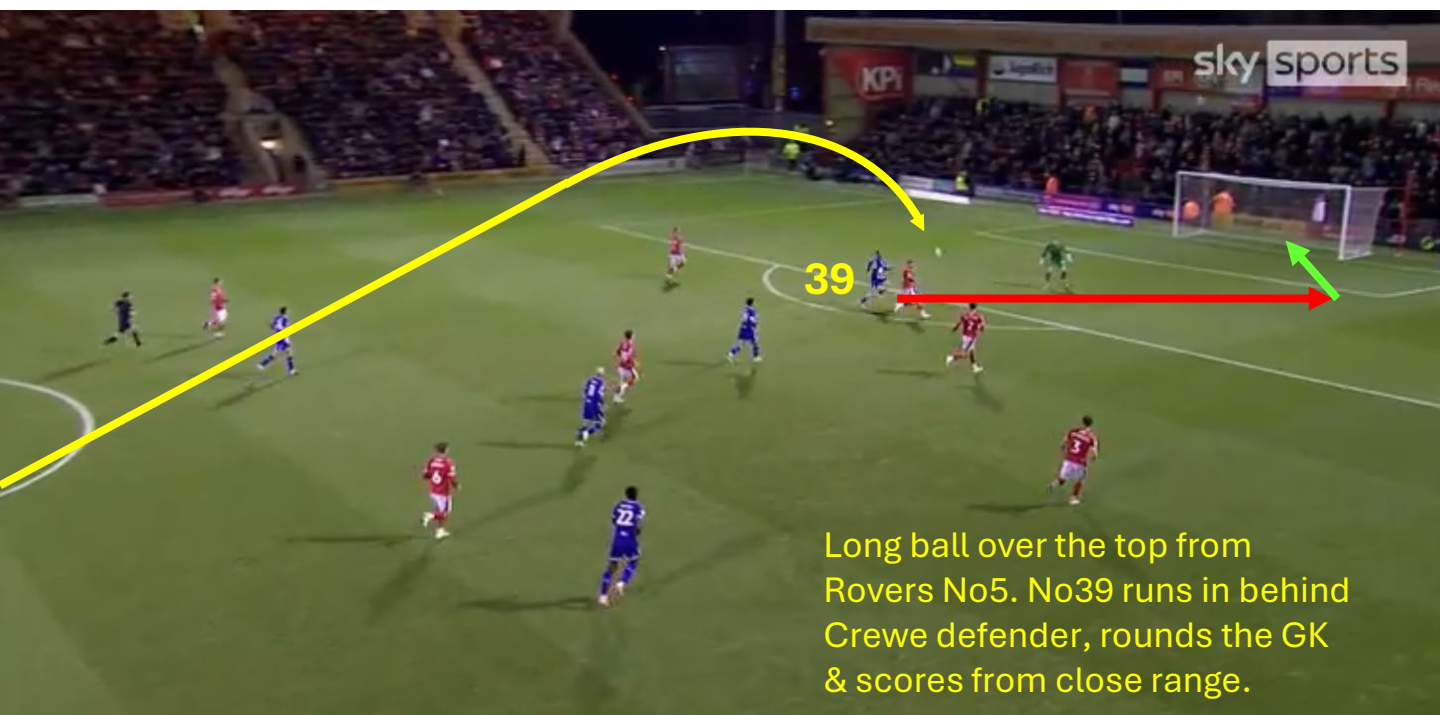
## GOALS:

1<sup>st</sup> GOAL: CREWE 1-0 BRISTOL ROVERS (No36 TEZGEL) 9 MINS



No3 for Crewe gets in behind FB on Rovers right hand side & crosses the ball to No36 Tezgel who shoots first time into the top corner (Unmarked)

2<sup>ND</sup> GOAL: CREWE 1-1 BRISTOL ROVERS (No39 MORTON) 12 MINS



Long ball over the top from Rovers No5. No39 runs in behind Crewe defender, rounds the GK & scores from close range.



# BRISTOL ROVERS OPPOSITION REPORT



## MATCH ANALYSIS

### MATCH SUMMARY

Initially, Crewe had the momentum & a great start to the match, scoring within the first 10 minutes. Rovers replied soon after, with a direct through ball to No39 who rounded the keeper & scored from close range. The game changed on 30 minutes, as Crewe No29 Thibaut was shown a straight red card after an altercation with Rovers No6 Mola.

With the extra man advantage, Rovers were able to control possession more & changed to more attacking formations (4-3-3, 4-2-4 & 4-1-2-1-2), to try & take advantage. They put plenty of crosses into the box, especially from No3 down the left-hand side. His crosses were very accurate, into the 6-yard box area. Despite these balls into the box, they failed to capitalise from any of these quality crosses. A couple of great chances, were missed by No11 (57 & 68 mins) for Rovers to take the lead. No22 hit the Crewe left-hand post on 70mins, cutting in from the right wing, shooting on his left foot. That was the nearest they came to scoring. No39 played well up front as a target man, but lacked any decent service, apart from the goal he scored.

Despite being a man better off, they failed overall to take advantage. In fact, Rovers were holding on towards the end, Crewe putting on pressure & forcing them into a 4-5-1 defensive formation. It must be noted though, that Rovers were very fortunate not to have 2 players dismissed themselves, due to poor refereeing decisions (my opinion). No6 Mola, committed numerous fouls, despite already being on a yellow card. He gets very close to the opponent, holding/grappling & giving freekicks away outside his team's penalty area. This could be an area to target. The players on the Rovers left-hand side received bookings (No's 3 & 6) & surprisingly weren't subbed. GK No1 Southward, was deemed to have handled the ball outside the box on 58 minutes, only conceding a free kick & yellow card. There should also have been a penalty for Crewe late on, for shirt pulling in the box which wasn't given.

#### ATTACKING:

- Concentrate predominantly down their left flank but will go long to CF & wingers.
- Dangerous & accurate first-time crosses from the left by No3 into 6-yard box
- CF No39 is a tall & strong target man, who can hold the ball up & bring others into play. Also demonstrated composure & intelligence to anticipate the direct ball, round the GK & finish
- CF No29 is very mobile & goes into wide areas to help in attacking moves

#### DEFENDING:

- Very comfortable with heading & aerial balls
- Good on pitch communication noticed from players
- Make sure they keep players back when in possession in the opponent's half, to not get caught out on the counter-attack
- The defenders are physical, so not frightened to get stuck in & win back the ball

#### STRENGTHS:

- Can play short or direct passes with the ball
- They're able to change tempo, going slow or quickly, depending on the situation
- They can put dangerous balls into the box from open play down the left or from set-pieces
- They are organised
- They showed good organisation, especially defending

#### WEAKNESSES:

- Rovers give away a lot of silly free-kicks due to being over physical, with holding/grappling/shirt pulling being methods employed.
- The defenders struggle with quick players, hence the fouls given away (see above). This can be an area to target, especially to win dangerous set-piece opportunities near to their box
- Waste good crossing opportunities, not enough players forward to take advantage



# BRISTOL ROVERS OPPOSITION REPORT



## RESOURCES USED FOR REPORT

### WEBSITES:

[www.buildlineup.com](http://www.buildlineup.com)

[www.fotmob.com](http://www.fotmob.com)

[www.skysports.com](http://www.skysports.com)

[www.transfermarkt.co.uk](http://www.transfermarkt.co.uk)

### MEDIA SOFTWARE:

APPLE IPHONE

MICROSOFT POWER POINT

MICROSOFT DESIGNER





# BRISTOL ROVERS OPPOSITION REPORT



## REPORT COMPILED BY:

ANDY CLIFFORD  
(PFSA MEMBER)  
21/12/25