

Question 1a)

The type of event I will be hosting is a night event that is held outside at a local park with a stage as the main focus. It will include talks about being eco-friendly and have performances that focuses on the five main goals of Singapore's Green Plan as well as have engaging exhibitions on the side. The outdoor space helps people feel close to nature and is a welcoming place for the community to meet. The lighting will change to fit different parts of the event: there will be brighter lights for speeches and bright colors and softer lighting during performances. Combining learning, fun, and nature to promote sustainability.

Question 1b)

The event is designed to not just be an outdoor event about sustainability, but also a space for people of different backgrounds to come together, get informed and connect through a common cause which is going green. The event was chosen to be outdoors because it immediately draws people closer to nature, where they will be near grass and trees, reinforcing the City in Nature pillar of the Green Plan and reminding everyone of our shared responsibility to protect the environment we live in.

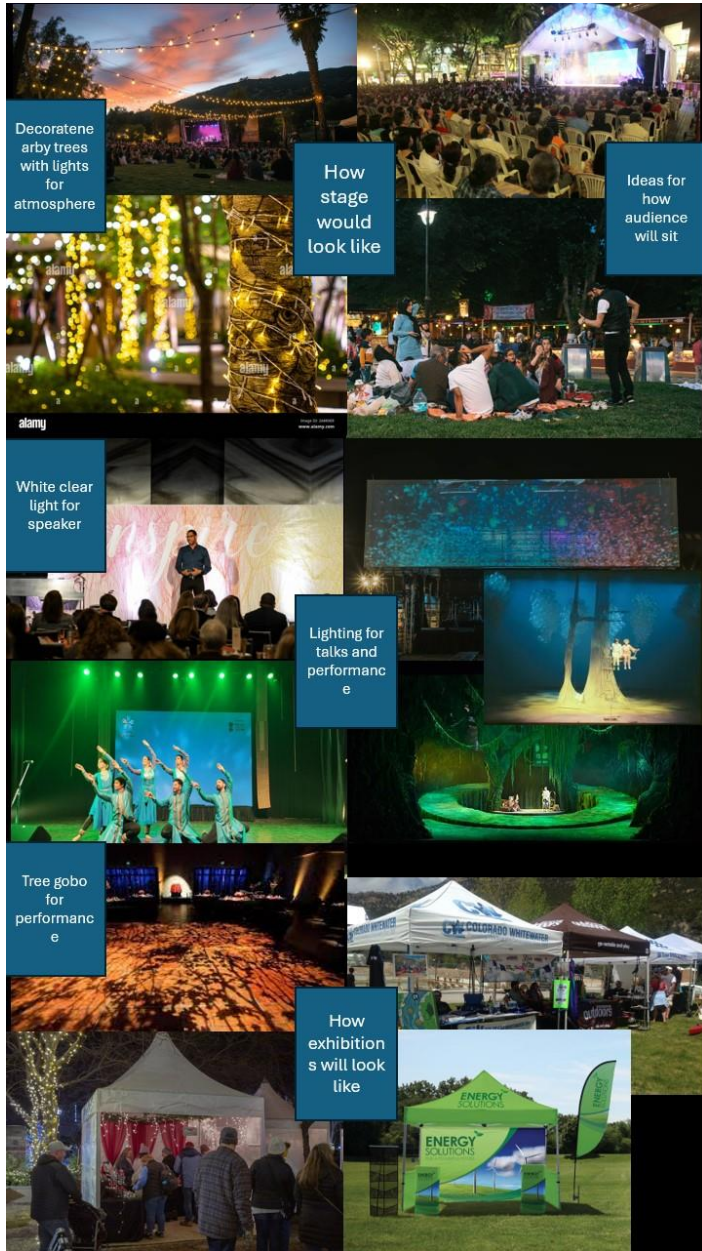
The event will engage the audiences through three key elements. The first one will be talks on sustainability, where there will be speakers who will give talks about sustainability and the green plan's ideas and how it can be used in their daily lives. As the speakers share ways to start eco-friendly habits, the audience could start thinking about what they could write for the final activity

Second, the interactive exhibitions around the event area that allow participants to engage with sustainability in a hands-on way. These exhibitions will tell people more about the different ways one can start being eco friendly and break down complex ideas into activities, where anyone of all ages can learn side by side with ease

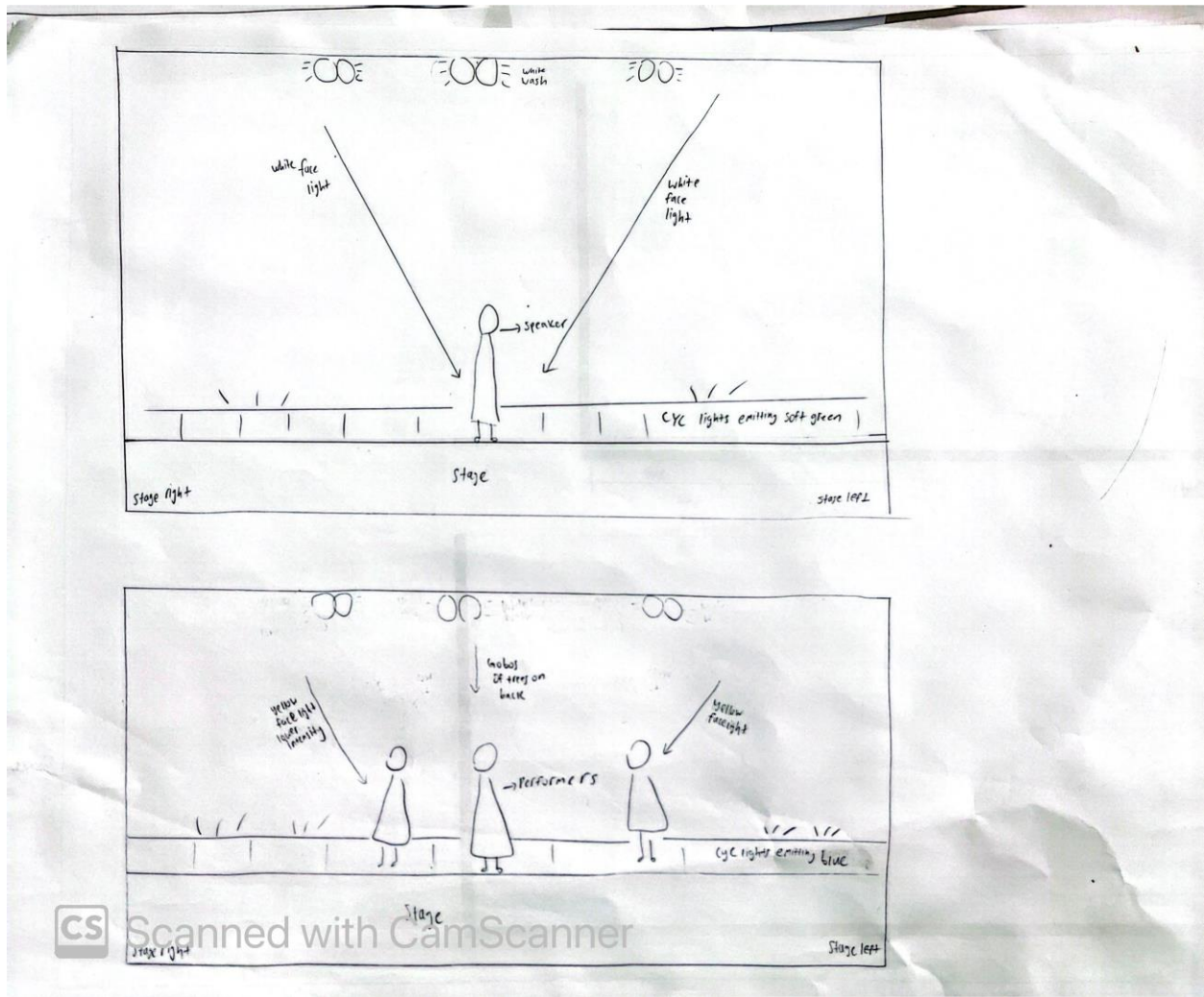
Third, the stage performances by schools and community groups that highlights the Green Plan's five pillars through creative storytelling. Hoping to inspire the audience that sustainability is not just a policy or a plan, it's something alive, something we build together as a community.

Finally, the closing activity where the audience will be asked to write down on how they will work to being more environmentally friendly on a board given to them. Where they will then share their shared hope for a better and sustainable future with everyone when the host asks them to

Question 1c)



Question 2a)

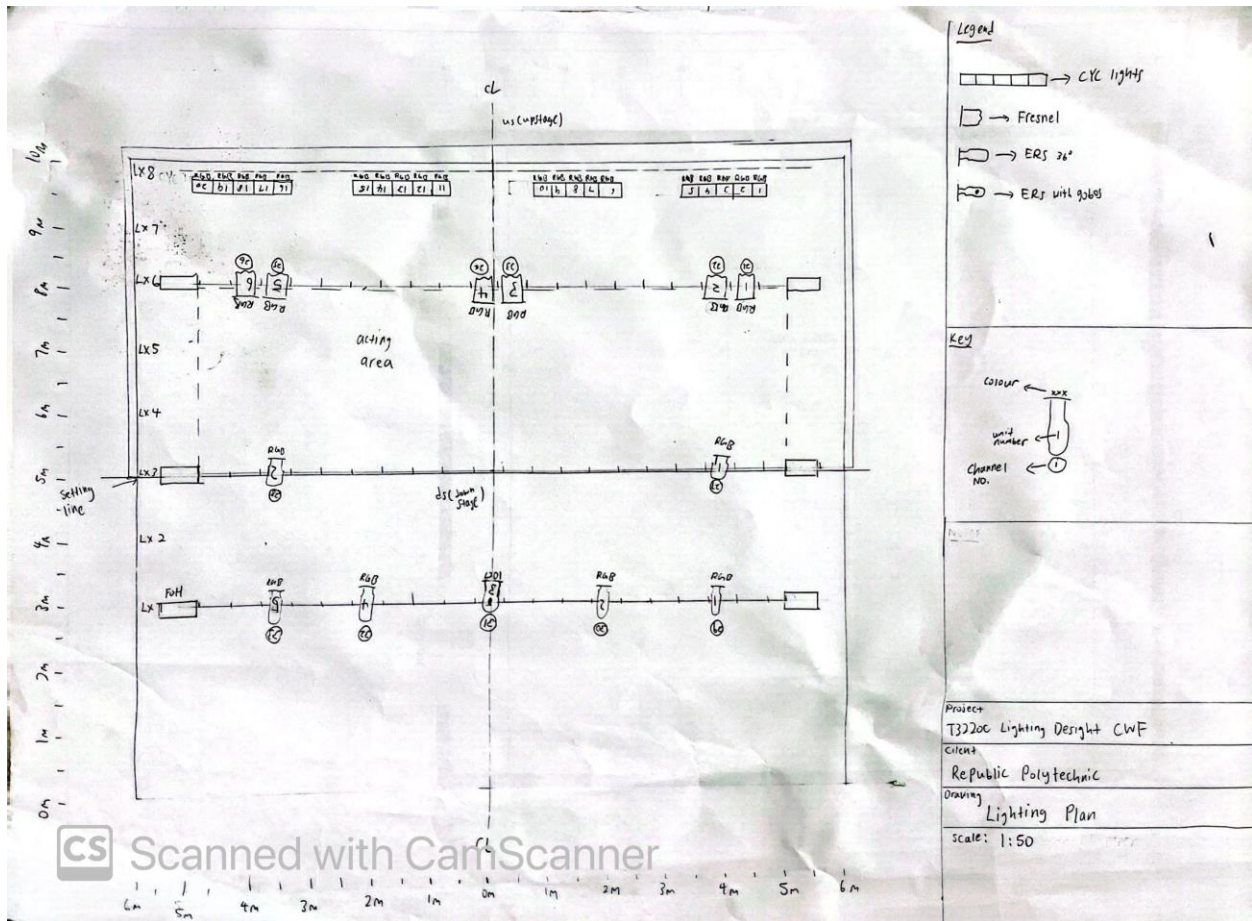


Question 2b)

The design process for the two lighting states developed from the core idea of the event, using light to guide focus and emotions for the audience while keeping the event's values. For the first state, which is focused on speeches, I chose bright white washes and face lights to make sure that audience would be able to see the speaker's face and body clearly, The white conveys clarity and honesty, resonating with the talks on sustainability. The light intensity were kept balanced so that it is enough to clearly highlight the speakers without overpowering them, so that the audience can focus on the message and speaker without strain. A soft green cyc glow at lower intensity is used for the background, reminding the audience of nature and the theme without distracting them from the speaker.

The second state, for performances, I imagine the scene to be one of hope in a dark time, introducing more colors and warmer tone. Blue cyc lighting were used with yellow face lights for contrast: blue for reflection and challenge, yellow for warmth and hope. Here, the lights are lower in intensity, and the edges are softened to capture the feel of the moment, while moving gobos are there to create patterns to mimic nature. This more expressive look enhances the emotion of the performances, helping the audience feel the journey of the story.

Question 3)



Question 4)

The two possible issues that could make the proposal unsuccessful are weather and split attention. For weather, since the event is outside, there might be chances that rain might happen, or if the temperature gets too hot intense it could make the audience uncomfortable. This is a problem due to the fact that only the stage and exhibition tents are

covered while the audience area does not have anything covering it, causing it to be exposed to the open air. If attendees feel too hot, wet, or just uncomfortable, they might just leave early or avoid participating in the activities due to bad weather, especially if there's a thunderstorm. This would lower the overall impact of the event if people were to leave and not participate as it weakens the sense of community that the event aims to promote. Another possible problem is that people's attention might be divided. The event has two different places where people can spend their time at, one is the main stage that includes shows and talks, while the other are exhibition booths that surrounds the area. While having different activities makes the event more interesting, it can also split the audience. Some people might feel the need to more pay attention to the exhibits rather than listening and watching the stage, and others might do the opposite. That could prevent the audience from experiencing the event as a whole and reduce the shared emotional impact that fosters community harmony due to the fact that people are split. If attendees do not engage with all elements of the event, the intended message of sustainability and collective responsibility may not be fully received. In short, these two issues are what I feel could contribute to why the proposed project could end up unsuccessful.