

Extended Hours Alert! Robeson Community College's Student Services will be open late to better serve YOU! Stop by from 5:00 p.m. – 6:00 p.m. on:
August 11-14 (Monday through Thursday)
August 18-19 (Monday and Tuesday)
We're here to help you get ready for a successful semester. See you soon!

[REQUEST INFORMATION](#) [VISIT](#) [CATALOG](#) [APPLY NOW](#) [GIVE](#) [QUICK LINKS](#)



[ADMISSIONS](#) [ATHLETICS](#) [SCHOLARSHIPS & FINANCIAL AID](#) [STUDENT LIFE](#) [ACADEMICS](#)
[CONTINUING EDUCATION](#) [FOUNDATION](#) [WORKING LEARNER](#)



RCC ALUM CHRISTY LOCKLEAR NAMED DEAN OF CONTINUING EDUCATION

Robeson Community College is pleased to announce the appointment of Christy Locklear as Dean of Continuing Education.

"It is an incredible honor to begin my role as Dean of Continuing Education at Robeson Community College," stated Locklear. "RCC has helped to shape my career and passion for lifelong learning... As Dean of Continuing Education, I look forward to working with RCC's outstanding team to expand opportunities for students and professionals seeking to grow in their fields."

Locklear began her career as an administrative assistant at a doctor's office in Lumberton.

"I worked for a chiropractor and also for an ENT doctor," Locklear said.

Those experiences introduced her to working in healthcare, a profession she loved and wanted to get more involved in.

"It was my passion to become a master scuba diver," Locklear said. "As I started working in rescue and recovery, I realized that you don't get a lot of calls, and I wanted to do something and not just sit idle waiting for the phone to ring."

That's when Christy enrolled at Robeson Community College, signing up for the basic EMT course.

"My journey with RCC began in 2005 as an EMT student, where I developed a deep appreciation for emergency medicine," Locklear said. "I advanced through EMT Intermediate and earned my Paramedic certification in 2010."

Becoming a paramedic was very important to Locklear.

"I knew I wanted to be in charge, and paramedics on the truck get to make the final call on how to treat patients," Locklear said.

Determined to continue her education, Locklear progressed through the EMS program at RCC and completed her Associate of Applied Science in Emergency Medicine. She later returned to college and transferred to the University of North Carolina at Pembroke to earn a bachelor's degree in education.

"RCC asked if I would work part-time to help train students on the ambulance," Locklear recalls. "I fell in love with teaching and assisting EMS students."

"Throughout my career, I have had the privilege of training countless EMS students, many of whom I've worked alongside in the field, watching them grow into exceptional medics," Locklear said. "Some of those students have returned to RCC to help teach the next generation."

"Witnessing that has been one of the most rewarding aspects of my journey," she added.

Locklear later became the Coordinator of Health Occupations at RCC. In this position, she had oversight of programs such as pharmacy technician, community health worker, massage therapy, and psychiatric technician. As those programs flourished, enrollment continued to rise, capturing the attention of her superiors. Her leadership skills and ability to motivate others to greatness helped pave the way for her to be named the Senior Director of Continuing Education and Workforce Development at Robeson Community College in 2023, and now in 2025, as the Dean of Continuing Education.

"I want to see our area grow and offer a wider range of courses to assist our community," Locklear said. "Expanding continuing education and understanding where the needs are, that is my goal."

As the Dean of Continuing Education, Locklear will oversee EMS, Fire and Rescue, Health Occupations, Career and College Readiness, Nurse Aide, Cosmetic Arts programs at the COMtech location in Pembroke, and continuing education recruitment of programs.

"I believe that continuing education is vital to the success and growth of our communities," Locklear said. "I feel truly blessed to have this opportunity, and I will work hard to give back what God and RCC have made possible for me."



Published on **March 6, 2025** by **Cheryl Hemric** [NEWS](#) [STUDENT SUCCESS STORIES](#)



Mailing Address
 PO Box 1420
 Lumberton, NC 28359

Main Campus
 5160 Fayetteville Road
 Lumberton, NC 28360
 910-272-3700

COMTech Site
 124 Livermore Dr.
 Pembroke, NC 28372
 910-272-3482

A.S. Thomas Center
 62 Union Chapel Road
 Pembroke, NC 28372
 910-272-3611

Emergency Training Grounds
 5825 S. Roberts Avenue
 Lumberton, NC 28358
 910-272-3330

Maxton Site
 The Learning Academy
 305 North Hooper Street

Office Hours:
 Monday - Thursday 8am - 5pm
 Friday: 8am - 3pm
 Student Services Extended Hours

Campus: [Directory](#) | [Map](#)
 RCC App: [Apple](#) | [Android](#)



STUDENT RESOURCES

- Apprenticeships
- Bookstore
- Bookstore - First Day Complete
- Calendars & Schedules
- Career & College Promise
- Catalog & Handbook
- Counseling & Career Services
- Jobs for Students – College Central Network
- Disability Services
- Financial Aid
- Honors Program
- Online Learning
- Records & Registration
- Student Activities
- The Academic Success Center
- TimelyCare
- Transcript Request

CAMPUS RESOURCES

- Faculty & Staff Directory
- Human Resources
- Information Technology
- Library
- Tuition & Business
- Request Information
- Salon Services Available to Public
- Schedule a Visit

ABOUT RCC

- History
- Mission & Values
- Board of Trustees
- Foundation
- Employment
- Accreditation

PUBLIC DISCLOSURE

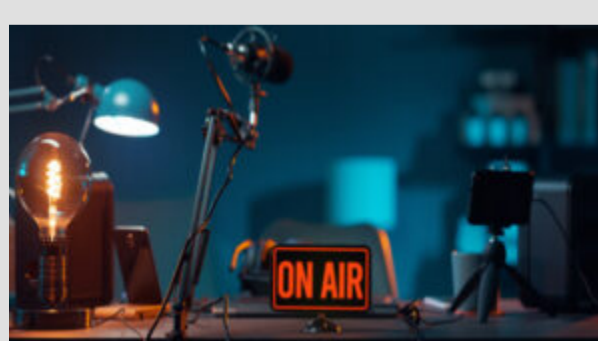
- Cares Act
- College Navigator
- COVID-19 updates
- Report a Concern
- Student Achievement
- Notice of Non-Discrimination

CAMPUS SECURITY

- Safety and Security
- Title IX

EVENT REGISTRATION

- Event Registration



[Click to play Discover TV Series](#)

[Click to listen to Radio Interviews](#)

[Click to view Carolina Beat Segments](#)

[Click to view copies of SOAR Magazine](#)