

ARCH - 6311

DIGITAL MEDIA - FALL 2022

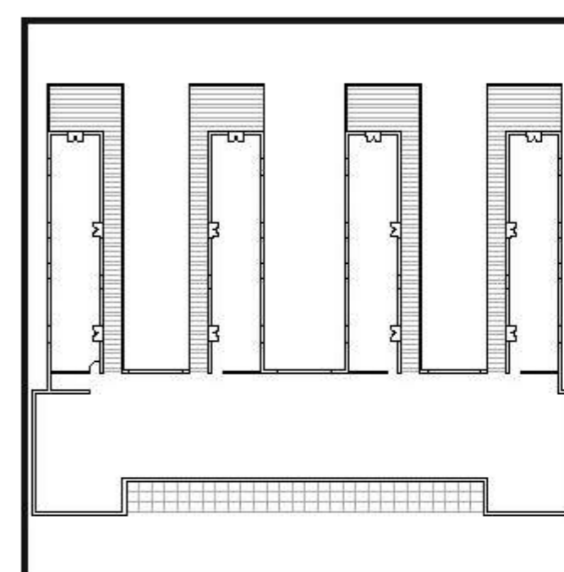
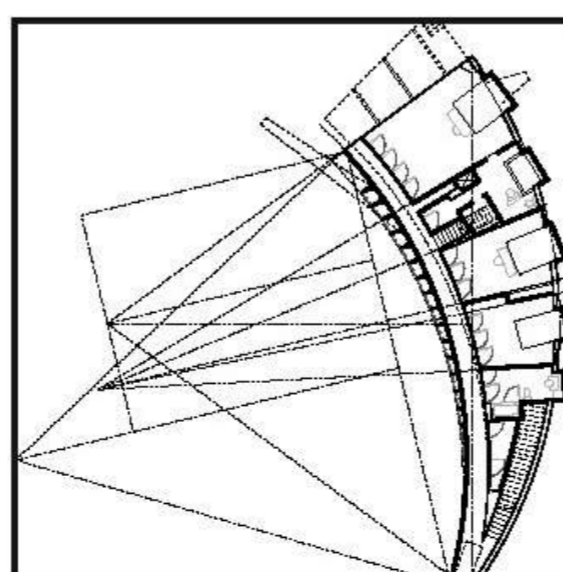
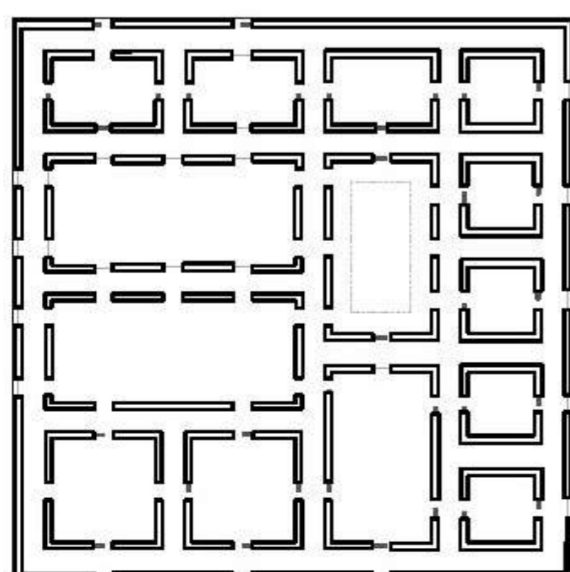
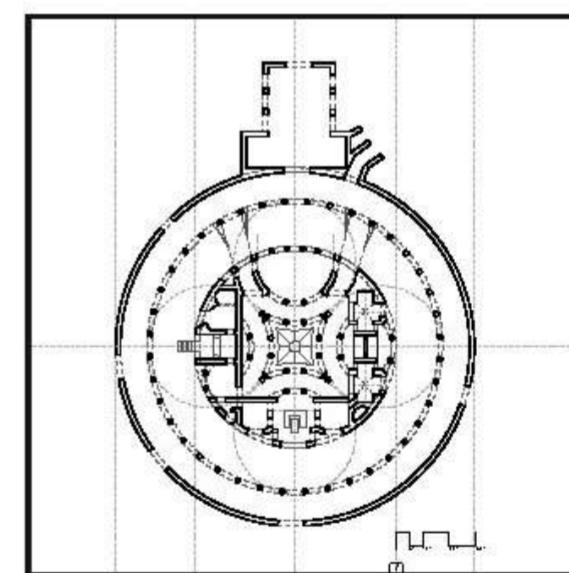
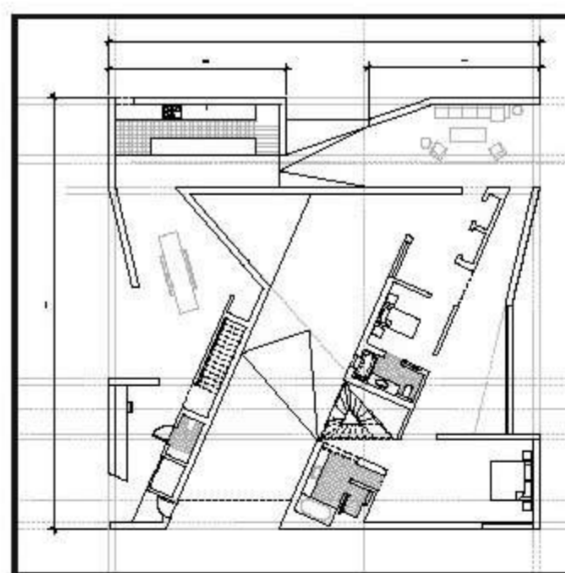
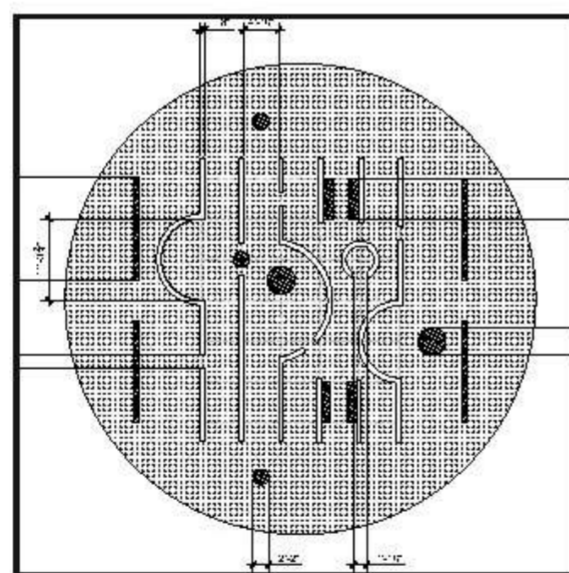
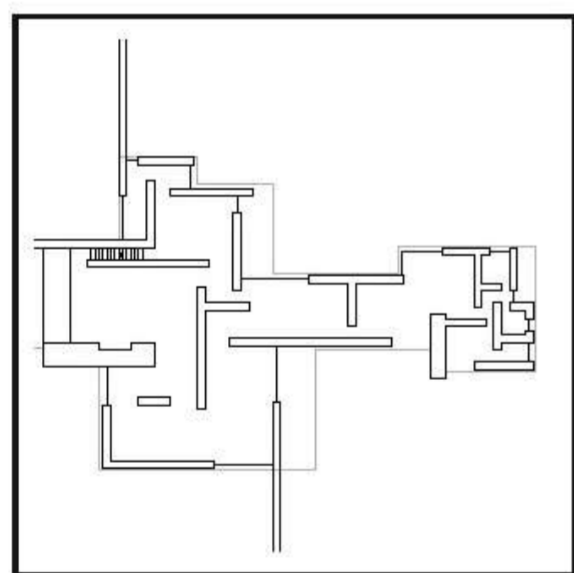
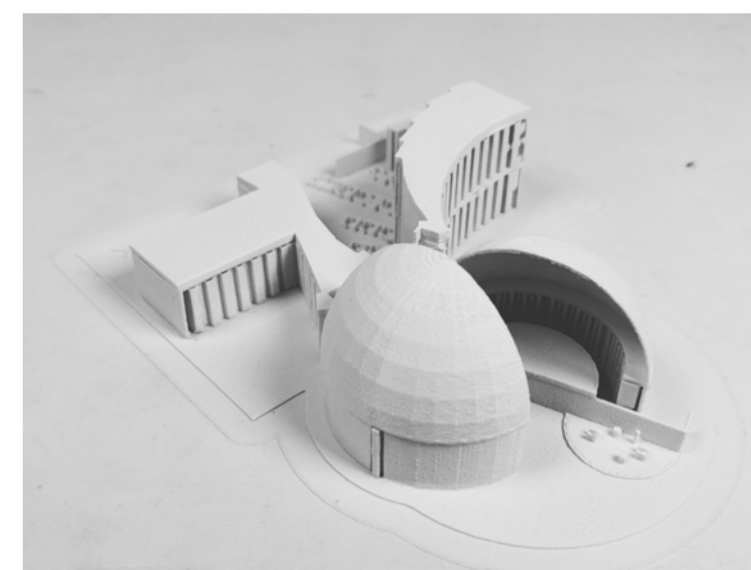
PROFESSOR: S. OMAR ALI AND NIMET ANWAR

ASSIGNMENT 1: PLAN PATTERNS AND MASHUP

USING COMPOSITIONAL RIDDLES AS AN ORGANIZATIONAL FRAMEWORK, CONSTRUCTING A FICTIONAL, YET PRECISE AND CAREFULLY RECONSTRUCTED FLOOR PLAN THAT COMBINES FRAGMENTS FROM A MINIMUM OF FIVE PRECEDENTS. THIS IS A GRAPHICAL REMIX, THE CONCLUSION OF WHICH FUSES A MEDLEY OF RECOGNIZABLE, EVEN ICONIC, PARTS, DETACHED FROM THEIR WHOLE.

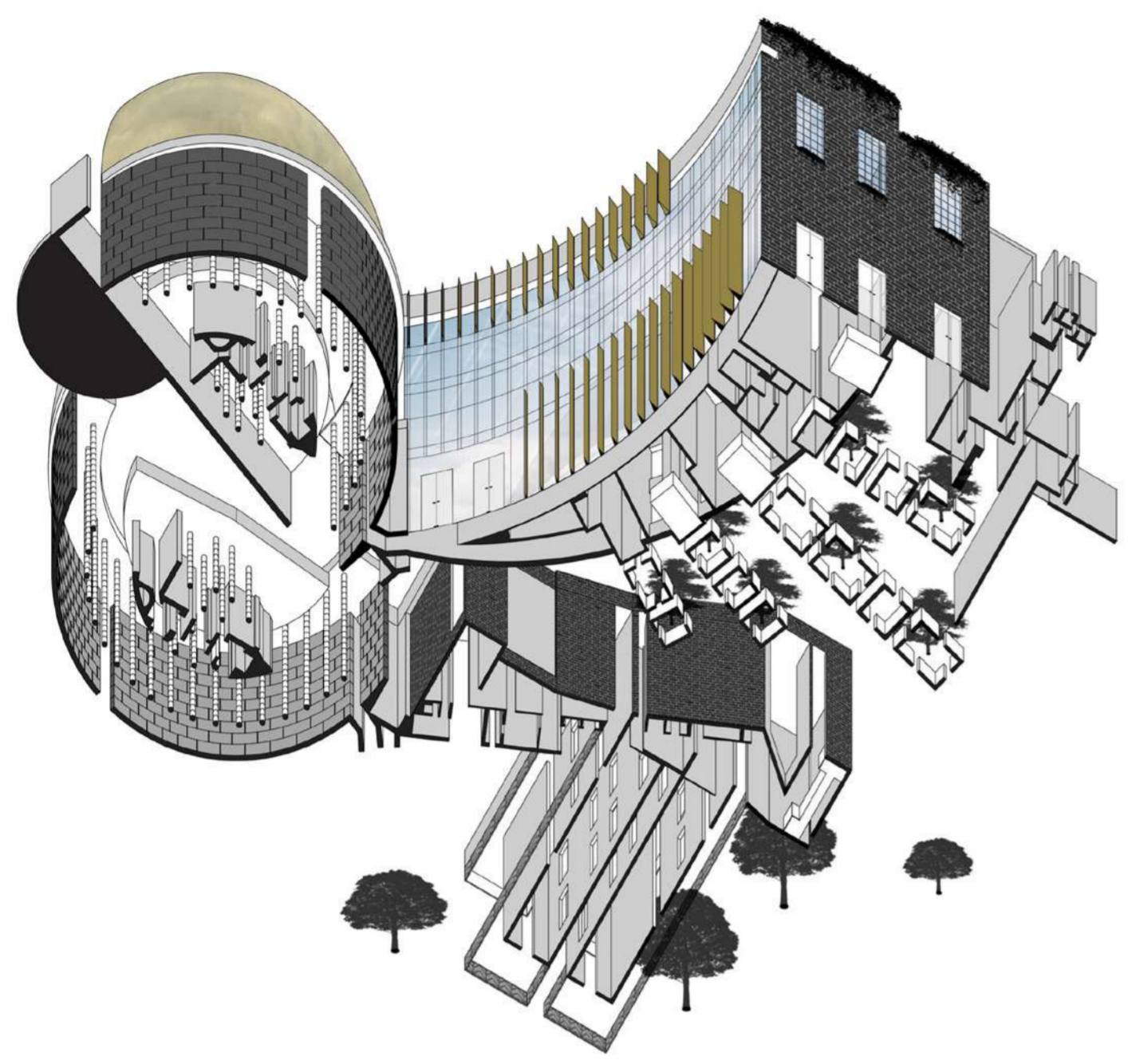
FOR THIS ASSIGNMENT I USED A TOTAL OF SEVEN PRECEDENTS:

- BRICK COUNTRY HOUSE - MIES VAN DER ROHE
- SONBEEK PAVILION - ALDO VAN EYCK
- HOUSE WITH A VOID - STUDIO SEAN CANTI
- TEATRO MARITIMO AT HADRIAN'S VILLA - HADRIAN
- SLOW HOUSE - ELIZABETH DILLER
- ALVALADE HOUSE - AIRES MATEUS
- VILLA AND PAVILION - ALDO ROSSI



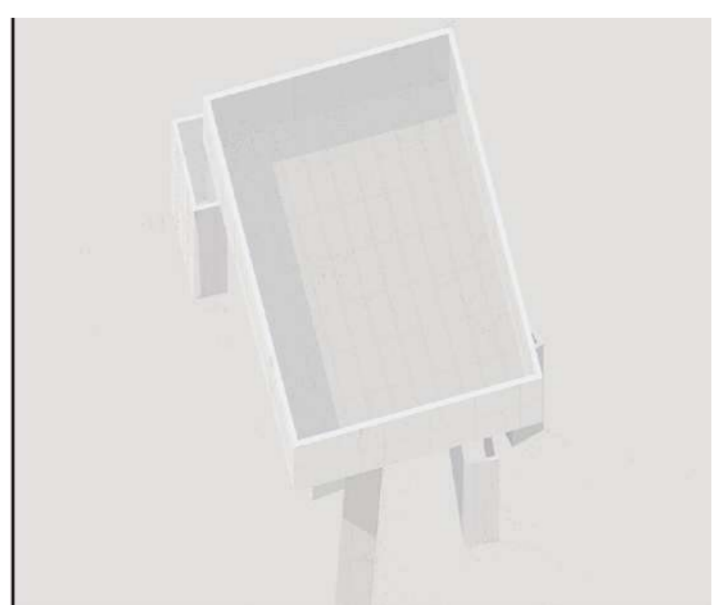
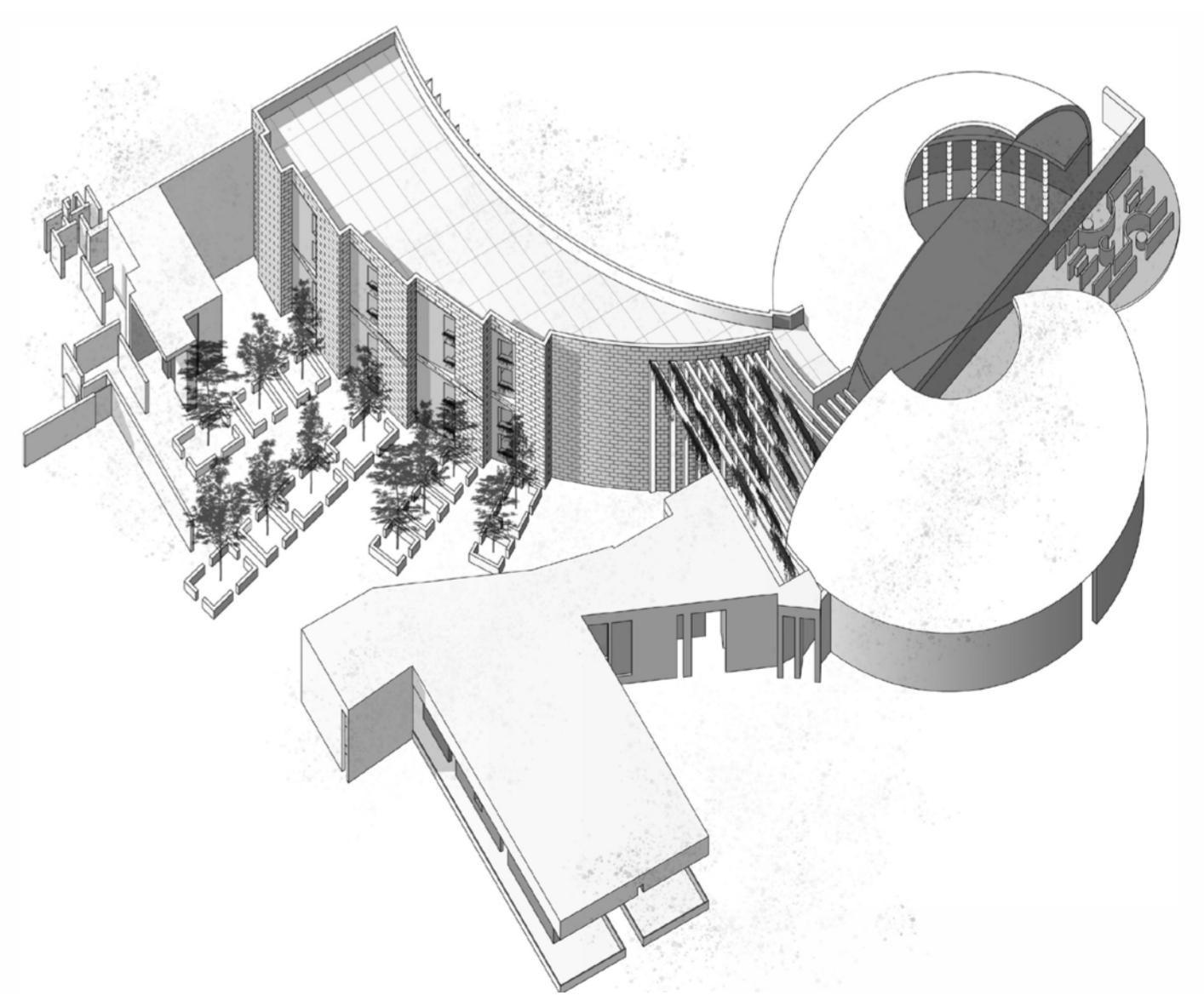
ASSIGNMENT 2: WORM'S EYE OBLIQUE

MY COMPOSITIONAL RIDDLE "A FLOOR PLAN THAT BREAKS" CAME FROM THE IDEA OF COMBINING CURVES WITH STRAIGHT EDGES. AFTERWARD, PLAN MASHUP WAS USED TO GENERATE A 90° OBLIQUE PROJECTION DRAWING. THE PLAN GENERATES FIRST LEVEL'S ELEVATION. ABOVE THE FIRST LEVEL, THE DRAWING IS A WORK OF FICTION. THE COMPOSITIONAL RIDDLE MAY BE USED TO ASSIST IN DEFINING THE ELEVATION.



ASSIGNMENT 3: BIRD'S EYE AXONOMETRIC

SIMILAR TO ASSIGNMENT 2, THIS IS THE SAME PLAN ONLY GENERATED INTO AN AXONOMETRIC PROJECTION DRAWING (30-60° FROM ABOVE). HOWEVER, THERE IS A CATCH FOR THIS ASSIGNMENT WHERE YOU HAVE TO FOLLOW A LIST OF PRECEDENTS AND FIND A WAY TO BEST REPRESENT THEM IN YOUR DRAWINGS. I ENDED UP CHOOSING DOLMA'S PROJECT - FIRST OFFICE AS A BASE.





ASSIGNMENT 4: COPY CAT

THIS IS BY FAR MY BEST WORK IN THE SERIES, AS I WAS LOOKING THROUGH THE LIST OF PRECEDENTS, THIS PERSPECTIVE RENDERING BY PALMA WAS THE MOST CAPTIVATING TO ME AS IT CLEARLY SHOWS THE PEACEFULL ATMOSPHERE. THE RELATIONSHIP BETWEEN THE DETAILS AND THERE IS SOMEHOW A CONVERSATION DEMONSTRATED THROUGH A 2D DRAWING. THIS IS ALSO THE GOAL OF THE ASSIGNMENT AS I TRY TO BRING THE DRAWING TO LIFE.



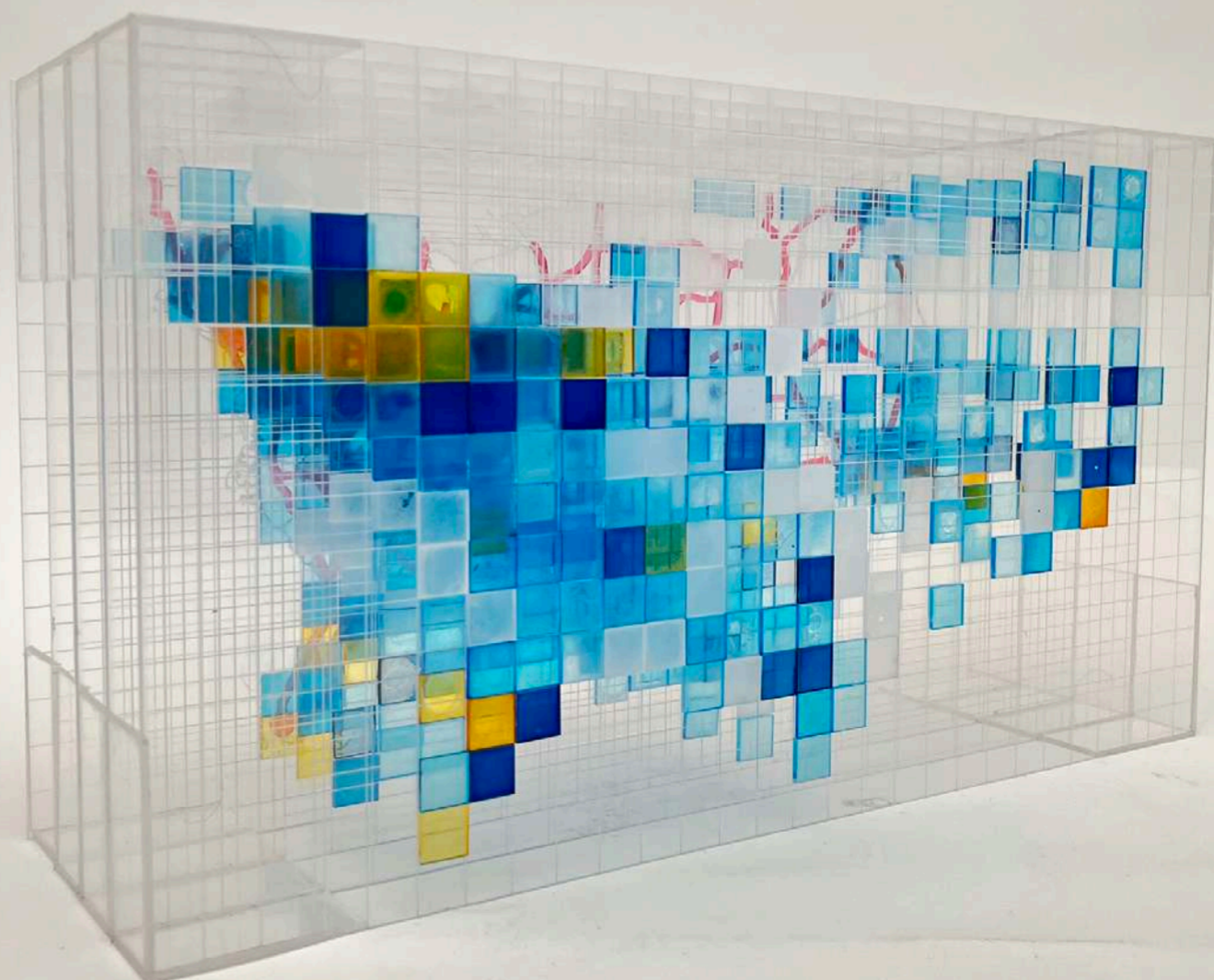
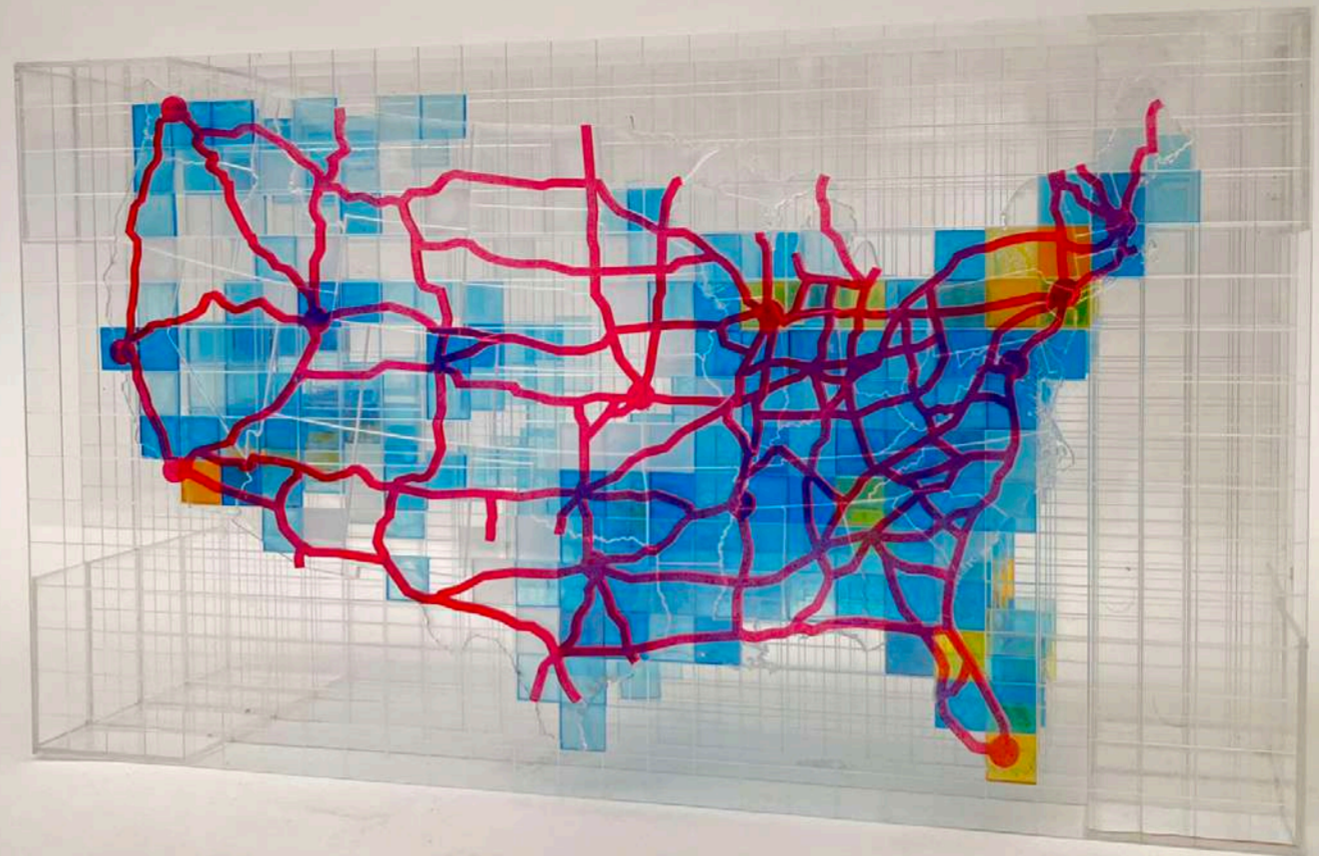
PALMA, CASA PARA AXEL (2018)

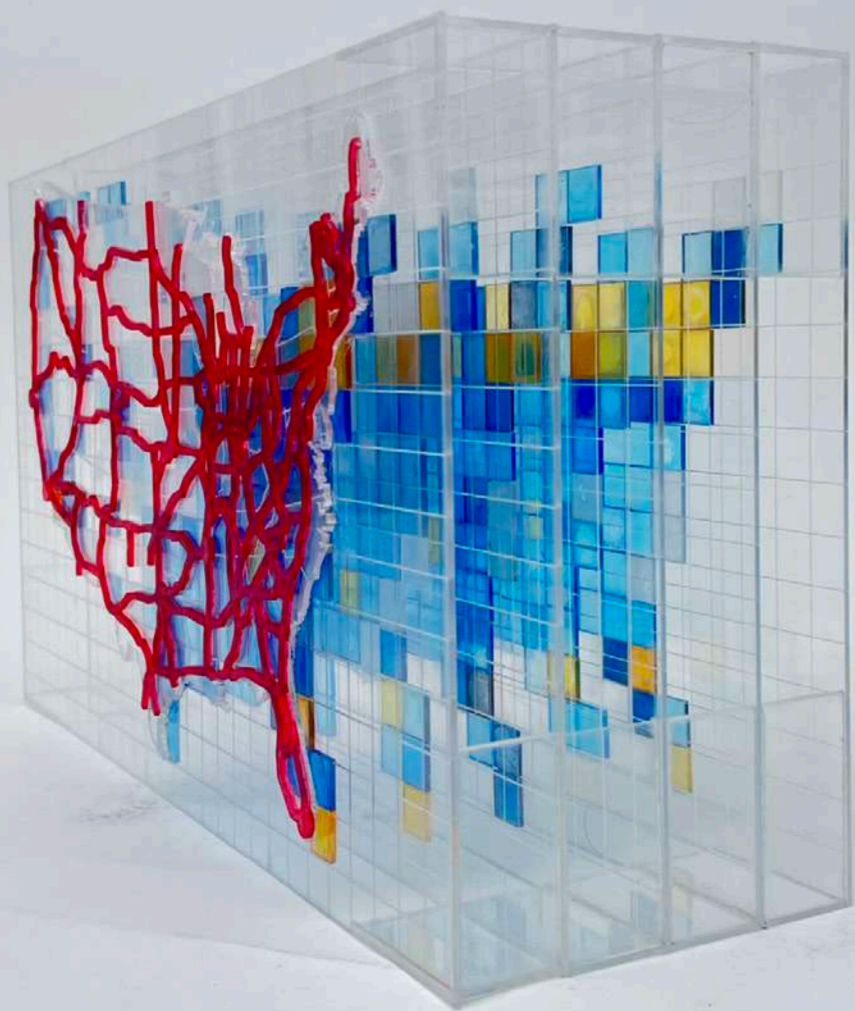
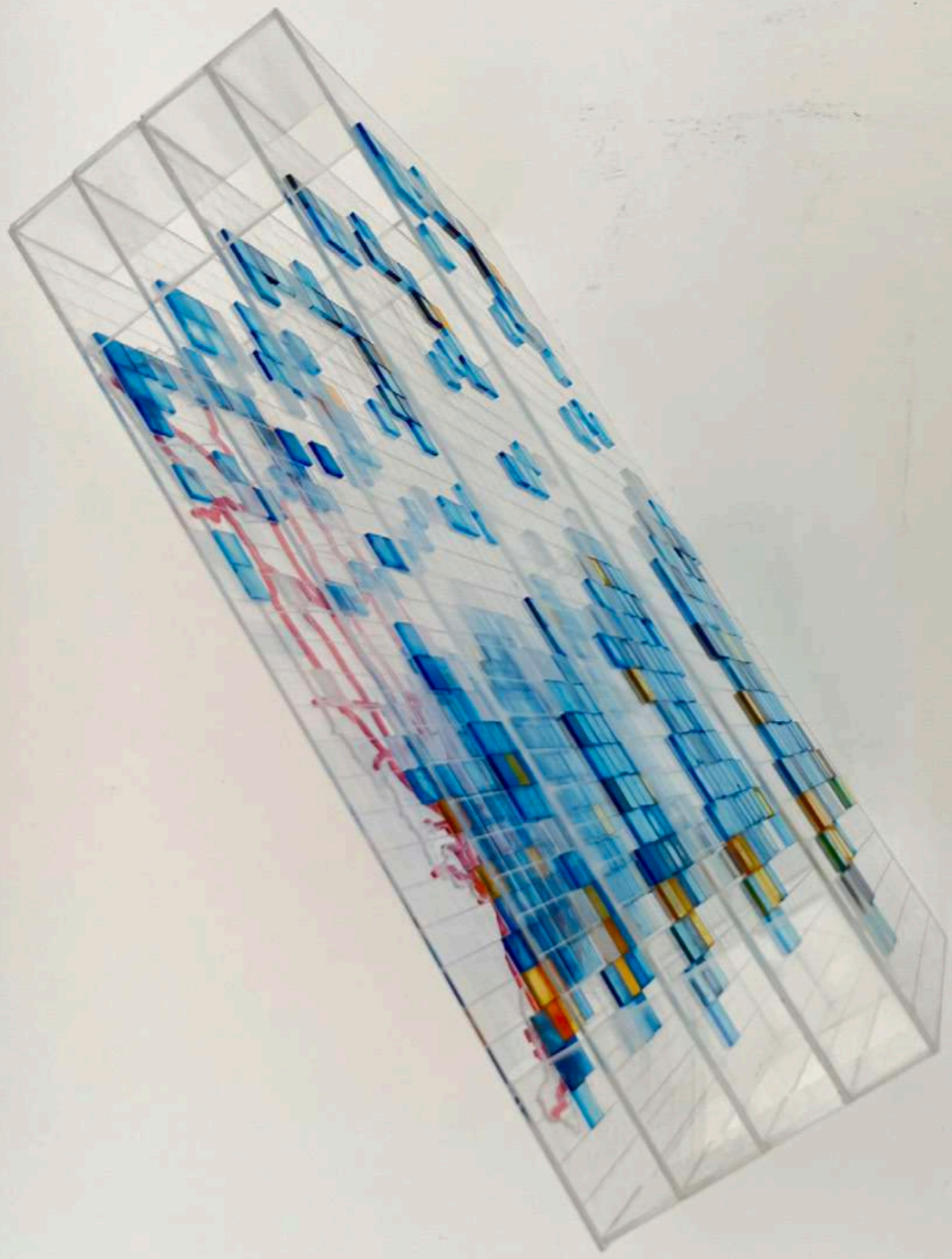
ARCH - 6963

MAPPING AS MAKING

PROFESSOR
ELIZABETH CAMUTI

MODEL VISUALIZATION OF THE UNITED STATES HEAT MAP OF THE NUMBERS OF MOTOR VEHICLE ACCIDENTS OCCURRED IN 2012. COLOR CODED AND SEPARATED INTO WEEKDAYS





IMPACT DESIGN 2022

STUDIO B

POSITION TEAM LEADER

INSTRUCTOR NGUYEN TUAN HUY



- VARIATIONS
- 1 POD
 - 2 POD
 - 3 POD
- COMBINATIONS
- ORIGINAL
 - PARALLEL
 - STAGGER
 - 2 MODULES L-SHAPE
 - 3 MODULES L-SHAPE
 - 4 MODULES CROSS-SHAPE
 - 4 MODULES U-SHAPE

WASTE DISPOSAL SYSTEM



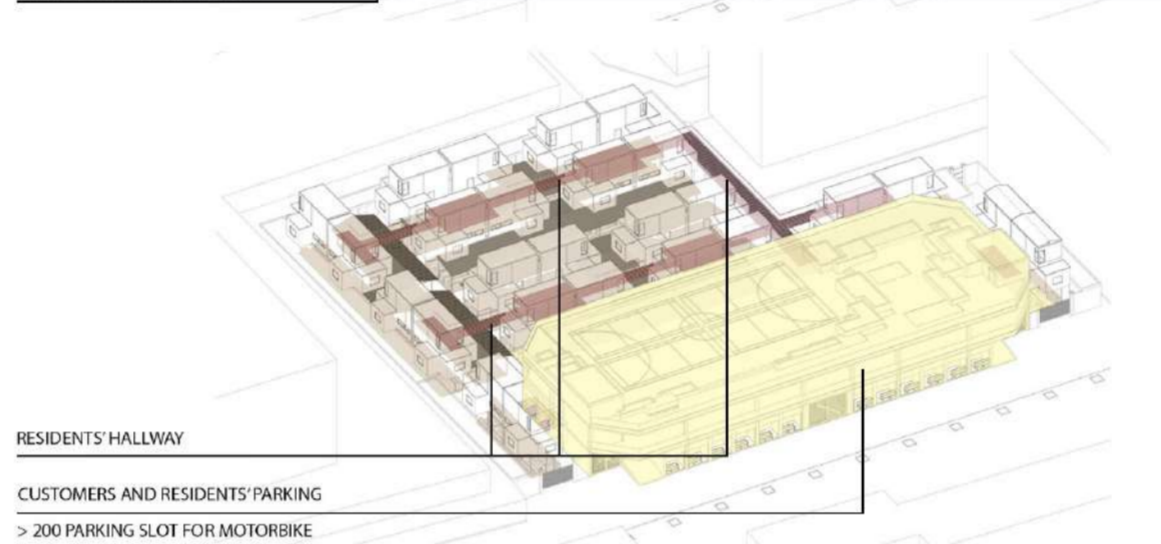
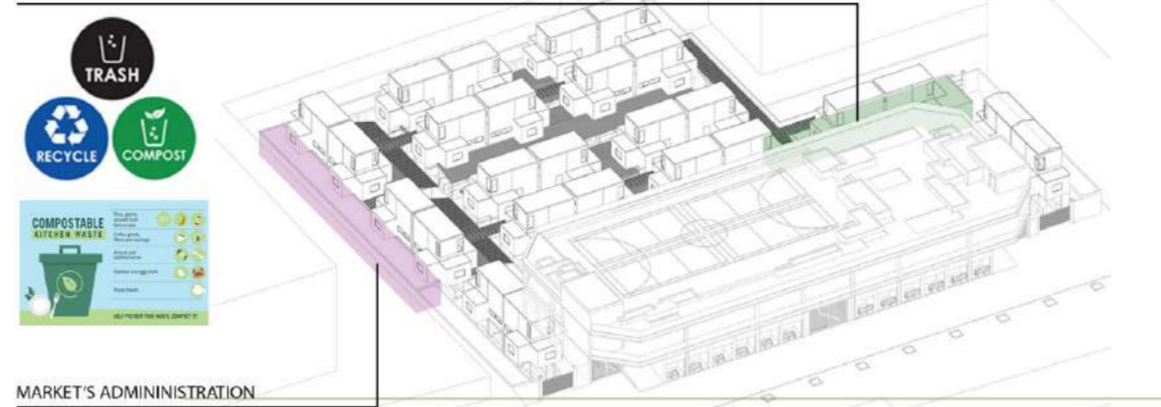
MARKET'S ADMINISTRATION

RESIDENTS' HALLWAY

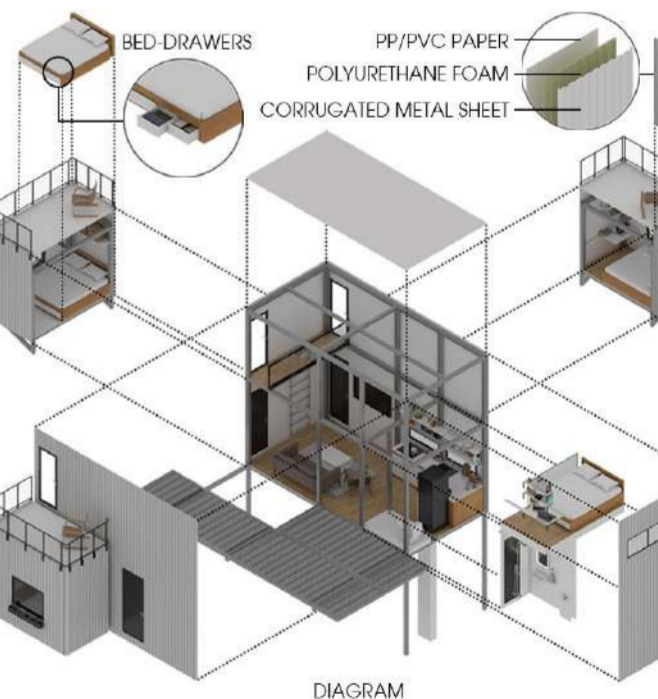
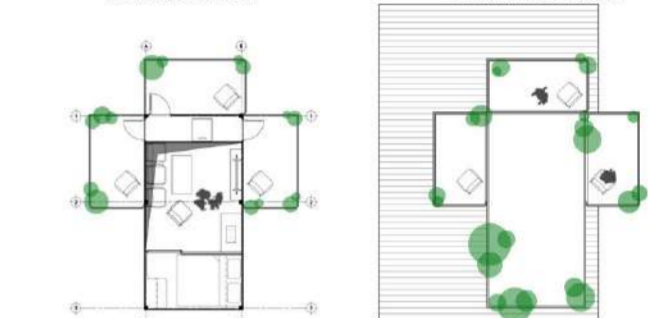
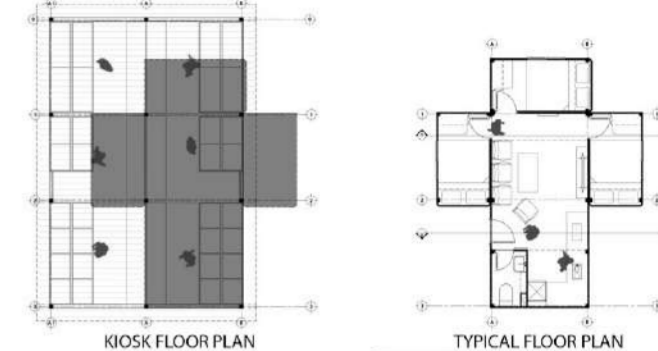
CUSTOMERS AND RESIDENTS' PARKING

> 200 PARKING SLOT FOR MOTORBIKE

ROOFTOP PUBLIC PARK AND GREEN SPACES



1500 3000 5000 10000 mm



AWARDED TOP 25 HONORABLE MENTIONS



IN PRESENT DAYS, YOUNG PEOPLE INCLINE TO MIGRATE TOWARD URBAN AREAS FOR BETTER EMPLOYMENT AND NETWORKING OPPORTUNITIES. HOWEVER, THIS LEADS TO A CONCERN OF POPULATION EXPLOSION AND LACK OF RESIDENTIAL AREAS WITH REASONABLE PRICES WHILE ENSURING FUNDAMENTAL LIVING QUALITIES. THE SITUATION IN HANOI, VIETNAM IS ONE OF THE TYPICAL EVIDENCES OF THIS. THROUGH THOROUGH RESEARCHES, IT CAME TO OUR AWARENESS THAT THERE IS A WASTE OF SPACE ABOVE TRADITIONAL MARKETS IN VIETNAM. THE KIOSKS ROOFED WITH CORRUGATED IRON AND CANVAS DOES NOT MATCH THE AESTHETICS OF A DEVELOPING CITY.

"IVXI", REFERRING TO 4X1 - 4 BEDROOM AND 1 BATHROOM, IN OUR PERCEPTION, IS A MODULAR SOLUTION TO UTILIZE WASTED SPACE TO ACCOMMODATE SHELTERS FOR 100+ INDIVIDUALS THAT CAN BE FLEXIBLE FROM 1 TO 4 PEOPLE EACH MODULE. MOREOVER, OUR CONCEPT CREATES OTHER VALUES FOR PEOPLE WITH LOW INCOME SUCH AS ELIMINATING THE DISTANCE OF RESIDENTS TO THE FOOD SUPPLIERS AS WELL AS MINIMIZING WASTED FOOD. IVXI ALSO PROVIDES A PUBLIC SPACE THAT HELPS WITH ENHANCING SOCIAL ENGAGEMENT FOR PEOPLE AND INCREASING MORE GREEN SPACES FOR THE CITY.





CERTIFICATE OF ACHIEVEMENT

Proudly Presents to

Doan Hai Dang

for securing a position in Top 50
MICRO HOUSING ARCHITECTURE COMPETITION
Hosted by IMPACT COMPETITIONS

Jury Panel

Aristides Dallas • Joe Chikamori • Liz Walsh • Sebastian Irrarazaval • James Shen
Ludwig Godefroy • Doan Thanh Ha • Peter Pichler • Mark Foster Gage • Sun Dayong