

Home Edition

EARTH TONES

dream in colour

GOING BOLD IS IN VOGUE THIS SEASON, PLUS SPICE UP YOUR KITCHEN SPACE WITH EXPERT HELP



BEST OF HUE

Colour me happy

CRAFTSMANSHIP

Feature tiling is made easy with Bert & May's expertise, product longevity and raw but refined aesthetic

Giving a nod to the latest colour trends can make your home feel fresh and contemporary. Angelina Villa-Clarke talks to the experts to find out how to do it



Whether it is Apricot Crush – named colour of 2024 by trend predictors WGSN – or Viva Magenta – Pantone’s colour of the year for 2023 – the latest trends in tone might start on the catwalk, but they quickly translate to our homes. This year, the Barbiecore frenzy, which celebrates all the shades of pink in homage to the blockbuster *Barbie* film, has seen the hue introduced across all types of homeware, from kitchens to textiles.

Whether you opt for a soft orange sofa or simply a bright red toaster, referencing in-vogue colours in your home can instantly update any room. Sam Pye, creative director at visionary design studio Echlin, gives his insight: “Interiors and fashion are closely intertwined, and there is a strong late-90s influence returning to interiors in the same way it has in clothing. We are seeing more chrome and silver take over from brass and bronze, which have been go-to metals in the past few years.”

Kitchens are perhaps the largest investment in our properties and, where once the fashion was to stick to neutrals for longevity, homeowners are now opting for bolder choices. Bryan Turner from Cambridge-based Bryan Turner Kitchens agrees: “Clients are now favouring deep rich tones such as olive green, dark brown and burgundy,” he explains. “These shades go

LET THE SUN IN

Lee Thornley, founder of Bert & May, on why yellow is a plus

1. Yellow tiles are versatile and brighten up any space.
2. Pairing our Sweet Yellow tiles alongside a neutral tile creates a sophisticated checkerboard scheme.
3. Match sunny yellows with lighter blue and pale green tiles for a refreshing colour palette.



beautifully with burnished brass handles and Carrara marble worktops with old-gold veins. Pattern is also making a comeback, with wallpapers and hand-drawn murals in demand.”

Allison Lynch, senior design consultant at luxury kitchen company Roundhouse Design, also comments that dark colours such as navy blue, charcoal black and forest green are currently gaining in popularity. “We have always offered any colour in our kitchens so clients have the freedom to go with what suits them. Some are braver than others. For those who don’t want the full commitment of a bold scheme, we provide different suggestions to add a pop of colour, for example a worktop with a rich variation in its design.”

When it comes to bathrooms, it is often the case that a bold design works well in smaller rooms. Small cloakrooms have traditionally lent themselves particularly to flamboyant finishes. Pay attention to the details if you don’t want an overpowering look; tiling and accessories can be used to give a nod to the latest trends.

Stand-alone tubs from The Albion Bath Co come in a rainbow of colours and work well as a room’s focal point. “There is a definite shift away from greys at the moment,” says Phil Etherden, managing





DESIGN DELIGHTS Bryan Turner Kitchens' burnished brass handles are a lashing of luxury (middle left); meanwhile, The Albion Bath Co has a rainbow array of bathtub hues available, including this sunny yellow (bottom left); and Roundhouse Design suggests that dark tones are in vogue (top left and above)

SHADY BUSINESS

Inspired Kitchens Cambridge gives its colour tips

1. For a warm, homely feel, go for earthy colours on base units, wood doors for wall units and a light stone worktop.
2. A two-tone finish works really well – for example, Lava Black and Pastel Rose cabinetry, matched with a white Corian worktop.
3. Accents of copper used against all-dark cabinetry results in a contemporary, industrial look.





COOL AND CALM Kersaint Cobb's carpets are sourced from the finest producers (above); west Norfolk-based Reeds Homestore is nicknamed The Harrods of the Fens (right); Kingsmead Carpets has a wide range of options (bottom right)

director. "We are seeing an increase in interest for baths in bold shades, such as navy, emerald green and deep crimson. Personally, I love to see a bath in a dramatic jewel-toned colour, as it adds an instant luxurious feel to any bathroom."

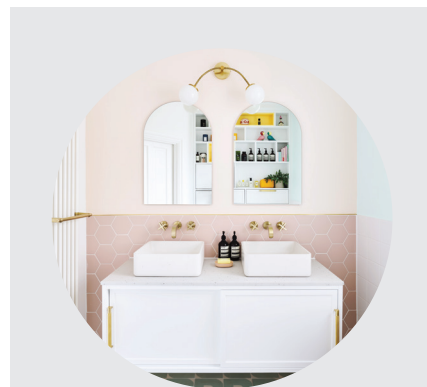
When it comes to flooring, vibrant colours are often overlooked in favour of neutral alternatives. Although, according to Jim Carlile, managing director at Reeds Homestore in Downham Market: "Grey is now starting to disappear and green, in various variants, seems to be the on-trend colour at the moment. It is coming through in all areas – from carpets to upholstery, curtains to bed linen."

Jon Flannigan, product manager at Kersaint Cobb, says a rich-coloured carpet can make a room feel more cosy.

"We are seeing an increase in vibrant, on-trend colours such as red and green being explored through flooring. Stripes, combined with more subtle tones, add visual interest to the floor. And for those tight on space, linear stripes help enlarge the appearance of a room."

While at Kingsmead Carpets, product manager Sarah Jenkinson recommends opting for a powder blue carpet to add a relaxing feel. "Reminiscent of the sea ➡"

“We are seeing vibrant, on-trend colours such as red and green being explored through flooring”



COLOUR CATCHERS

Saffron Walden-based Ripples Bathrooms picks its top three colours

1. Green continues to be the colour of the moment in bathroom design, even including the return of the green suite. Go for a matte finish and brass hardware to avoid a 70s throwback.
2. Rose gold brassware adds warmth and a sense of luxe.
3. Pink is a very versatile colour. Why not try floor-to-ceiling tiles in a terracotta tone or make a statement with a magenta concrete basin?



AGA | RAYBURN | HEATING



OPEN DAY!

10am to 3pm

Sat 14th October

Join us for
Electric AGA & Ranger Demos,
HVO Ready Rayburn
and Heating chat
PLUS special offers,
tasters and more!

01954 267267

mjabbs.co.uk

  @mjabbs
enquiries@mjabbs.co.uk

4 WILLOW COURT,
WILLOW RD,
LAKES BUSINESS PARK,
FENSTANTON,
PE28 9RD


Ltd
Home Heating Solutions



FREE RANGE

Available from home heating specialists M&J Abbs, which has a showroom in Fenstanton, the electric Rayburn Ranger has retro styling and comes in a range of statement colours. Whether you opt for marmalade (shown), tomato or sunshine, it's guaranteed to bring a pop of colour and some wow factor to your kitchen. It's also energy efficient and highly functional, with two large-capacity radiant ovens, a warming oven, a cast-iron hot plate and two-zone induction hob. Find out more at mjabbs.co.uk



and sky – the colour is best placed in areas where we wish to wind down.”

When it comes to wall colours, paint expert Farrow & Ball suggests using bold colours on furniture or smaller areas for impact. Charlotte Cosby, creative director, advises: “Adding colour can be done in many different ways without it looking too scary. Try painting furniture or areas you wouldn't initially think of decorating. Painting bookshelves, fireplaces or the interior of a cupboard will bring a room to life without it being too overpowering. Another great way to introduce some bold colour subtly is to paint your walls in a neutral tone, adding colour on the skirting, staircase or interior doors in a stronger shade. This method will create impact without having to touch the walls!”

Dominic Myland, CEO of Mylands, explains that using green across its many spectrums remains a timeless possibility. “Green is versatile, refreshing, has stood the test of time and remains a popular choice in modern interior schemes.”

Finally, Jennifer Porter, design office manager at fitted furniture specialist Neville Johnson, reveals that the Barbiecore trend is so popular now because it captures a feel-good spirit: “Shades of pink are perfect for adding instant personality to your spaces. And, when used for wardrobes or dressing rooms, tones of pink can look great paired with warm gold door handles. It's not just the fashion world that continues to be captivated by positive, bright pink shades, as Google searches for Barbiecore home decor are up by 200%.” ●



THE FULL SPECTRUM Mylands shows off natural shades of green and vibrant yellow (top left); let the furniture speak for itself with Farrow & Ball's neutrals, showing off unified floor and ceiling paintwork (above); Neville Johnson embraces on-trend shades of pink (right)

STOCKISTS**Bert & May**

020 7352 4904 | bertandmay.com

Bryan Turner Kitchens

01233 641050

bryanturnerkitchens.com

Echlin

020 7349 9610 | echlinlondon.com

Farrow & Ball

01202 876141 | farrow-ball.com

Inspired Kitchens Cambridge

01223 848620

inspiredkitchenscambridge.co.uk

Kersaint Cobb

01675 430 430 | kersaintcobb.co.uk

Kingsmead Carpets

kingsmeadcarpets.co.uk

Mylands

020 8670 9161 | mylands.com

Neville Johnson

0161 873 8333 | nevillejohnson.co.uk

Reeds Homestore

01366 382213 | reedshomestore.co.uk

Ripples Bathrooms

01799 934 225 | ripplesbathrooms.com

Roundhouse Design

01223 609 670 | roundhousedesign.com

The Albion Bath Co

01255 831 605 | albionbathco.com

YesColours

yescolours.com



“Shades of pink
are perfect for
adding instant
personality”

Ripples

EXCEPTIONAL BATHROOMS
DESIGNED AROUND YOU.



CREATING BEAUTIFUL BATHROOMS SINCE 1988
ripplesbathrooms.com

ripples SAFFRON WALDEN, 19 HIGH STREET,
SAFFRON WALDEN, ESSEX, CB10 1AT
SHOWROOMS NATIONWIDE



BARCHESTER
Celebrating life

Care as unique as you are

Imagine a little peace of mind...

...with the reassurance that your loved one is surrounded by caring people who value them for the unique person that they are. Where they're supported to continue their comforting routines, enjoy their favourite food, and spend time doing the hobbies and interests that they love most.

You can expect all this and more for your loved one at your local Barchester care home.

Hampton Grove, Chaffinch Lane, Hampton Vale, PE7 8NF • **01733 822 284**

Hilton Park, Bottisham, Cambridge, CB25 9BX • **01223 633 769**

Melbourn Springs, Hyacinth Drive, Melbourn, SG8 6FY • **01763 722 327**

To find out how we can help, visit:
barchester.com

Residential care • Nursing care • Dementia care • Respite care and short breaks

Vertical ice cream stripes wallpaper
£75 per roll, bobbibeck.com

Chelsea dome pendant
£79, industville.co.uk

Amuse La Bouche candy
stripe cushion cover
£68, roseandgrey.co.uk

Ric Rac tile in bubblegum
£7.20 per tile, bertandmay.com

Rainbow imagination

A spectrum of accessories to bring your space to life

Fara velvet throw
£104, idyllhome.co.uk

In deep water emulsion
£52.99, dowsingandreynolds.com

Ripples rug
£396, cosycoco.com

Emmeline radiator
£294, theradiatorcentre.com

April 6 light pendant
£361.99, abbeygatelighting.co.uk

Emerald Green Field tile,
Winchester classic
£3.74 per tile, originalstyle.com