

community connection



From left: Councillor Garry Good, MP for Otaki and Minister of Internal Affairs Nathan Guy, Mayor Brendan Duffy, Councillor Tony Rush and Te Horowhenua Trust Deputy Chair George Sue with the cheque from the Lotteries Commission.

Te Takere fundraising on a roll

The Horowhenua Cultural and Community Centre project (Te Takere) has received a massive boost with the announcement of a \$550,000 Lottery Grant.

MP for Otaki and Minister of Internal Affairs Nathan Guy, attending a Te Takere fundraising launch event at Levin library in July, made the announcement that the Lotteries Commission Board had granted \$550,000 to the Te Takere

project. The grant will go towards the building and fit-out of the community meeting rooms, exhibition and performance space, community support space, and a youth area.

"This will be a great asset for our community, combining the library with meeting rooms, local history displays, a recording studio and café. I'm sure it will become a central meeting point for locals, and will bring new life to the Levin town centre," said Mr Guy.

continued on page 3...

Issue 49. Saturday 30 July 2011

What's happening?

29 July 2011 (Start Date)
Levin Performing Arts presents
'Little Shop of Horrors'
Levin Performing Arts Centre,
655 Queen Street.

2 August 2011
Swim Fitness Launch (FREE).
7.30pm, Levin Aquatic Centre,
Queen Street, Levin.

6 August 2011
Heartland Championship:
Horowhenua-Kapiti v South
Canterbury.
2.30pm, Horowhenua Community Trust
Domain, Bath/Salisbury Street, Levin.

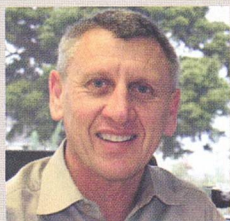
14 August 2011
Junior Splash.
10.00am – 12noon, Levin Aquatic Centre.

17 August 2011
Electra Business Breakfast in
Foxton (in association with Nature
Coast Enterprise & Foxton Tourism
Development Association).
7.15am, Foxton RSA.

Further details can be found on page 8 of this newsletter, on Council's website www.horowhenua.govt.nz and on Council noticeboards.



Mayor's message: Leading the way



Mayor Brendan Duffy

First and foremost a big congratulations to the Te Takere Project Steering Group for its successful application to the Lottery Grants Board. Receiving this grant of \$550,000 towards the Horowhenua Culture and Community Centre is great news for the project, for our community and for our District. It really sets us up to proceed with confidence and I wish

to extend my thanks to all of those involved in working on the application. Members of Te Horowhenua Trust are doing a terrific job of leading the community fundraising efforts for Te Takere and I see there are some upcoming fundraisers for us to get out and enjoy in the next few weeks. Why not get a

group together for the quiz night or for the Levin Little Theatre's Production of "Little Shop of Horrors"?

Council sometimes cops some flak for focussing on community wellbeing at a time when we also face significant infrastructure challenges. However I fully believe there's a place for us to do both. It's not just things like water quality, sewerage systems and landfills that determine whether somewhere is a great place to live – it's also the people. Council's role is not to deliver health or social services – we know that. But we do have a role to play in providing the leadership, support, resources and facilities that enable other organisations to do so.

Brendan

Rates can be paid in small instalments

Horowhenua residents can now pay their rates by direct debit in fortnightly instalments to coincide with their salary or pension going into the bank.

"People have been asking us to do this," says Doug Law, Finance Manager for the Horowhenua District Council. "It's about convenience to the ratepayers of the District."

The small fortnightly debits will make household budgeting easier for some, and cost no more than paying your rates quarterly or

once a year. There is no charge for the service. To set it up, call into your local Council Service Centre and fill out a form.

Doug says they are expecting a reasonable take-up of the service, given the number of requests.

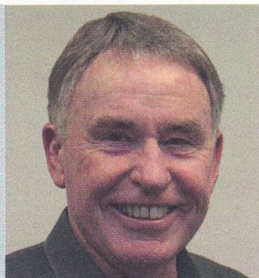
If you would like to pay in instalments, please phone Council's Customer Services team on 06 366 0999.

104.2
MORE FM
HOROWHENUA

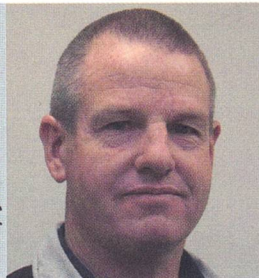
Meet your Councillors

Levin Ward

Garry Good 06 368 3607



Barry Judd 06 367 2137



Victoria Kaye-Simmons 06 368 8202



Leigh McMeeken 06 367 5204



"The local community has really swung behind this project with a determined fundraising effort underway, and this grant is a major step forward. This is another example of how lottery funding helps build stronger communities throughout New Zealand," he said.

Horowhenua District Council Mayor Brendan Duffy said receiving the grant was a "significant catalyst for the project."

"We are overwhelmed to hear that the Lotteries Commission has made a huge grant to our project. This is a massive boost to the fundraising for the project and also underlines the level of support within the community for the Community Centre. This project has taken a few years to get off the ground, but it's now full steam ahead and attracting external funding from outside our region is hugely significant," he said.

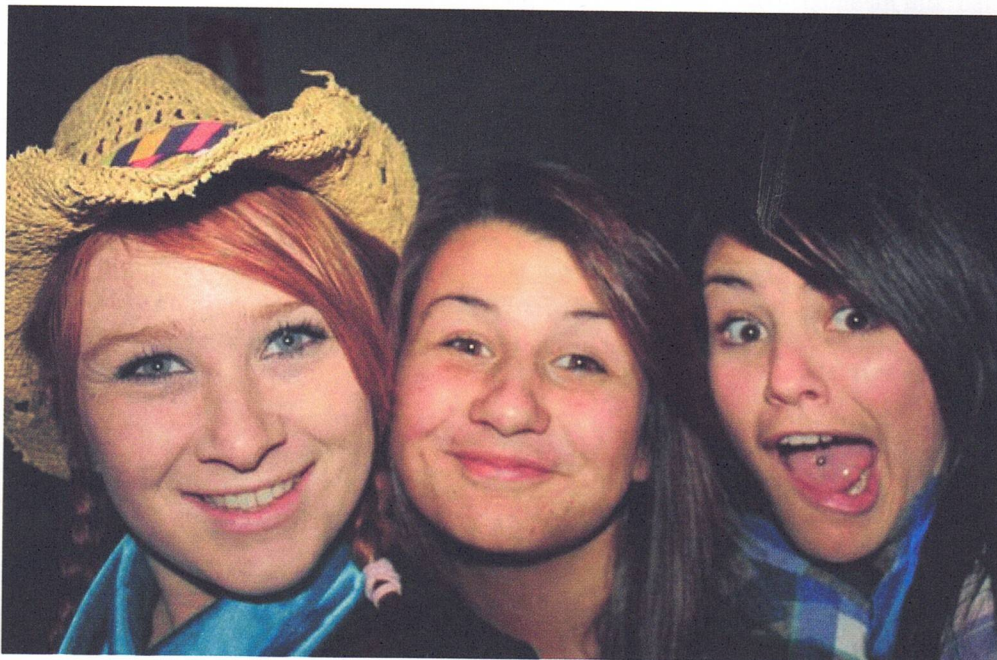
In other recent funding developments, in June, the Ministry of Social Development – Family and Community Services provided a \$20,000 grant towards purchasing equipment and resources for teen parents inside Te Takere. And in July, Te Horowhenua Trust was successful in an application to Council's Strategic Grants Fund for a grant of \$100,000. The purpose of the Strategic Grants Scheme is to provide financial assistance to community groups for capital projects that reflect and fulfil the sporting, environmental or cultural needs of the District.

Currently, just over \$4 million has been secured towards the total project cost of \$7 million. The Te Takere project is now well on track for Stage One of the construction, which is expected to begin in November this year with the Centre scheduled to open in October 2012.

Youth Voice Hoedown Rave

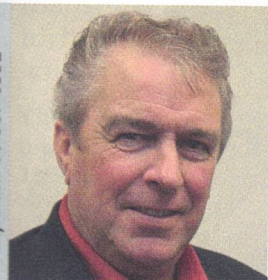
On Friday 22 July 2011, Horowhenua Youth Voice in conjunction with Centre Skate hosted a "Hoedown" at the Levin Events Centre. The aim of the evening was to provide a safe and fun holiday treat for the young people of the Horowhenua with proceeds going towards the Youth Space in Te Takere. Over 150 young people came to enjoy a fun night of skating and

dancing, with many spot prizes supplied by sponsors McDonalds Levin, Levin Aquatic Centre and Horowhenua District Council. Mayor Brendan Duffy also attended the event - congratulating Horowhenua Youth Voice for their tremendous youth leadership in raising money for Te Takere. The evening raised \$1,100.00 and included a \$400.00 donation from Centre Skate Horowhenua.

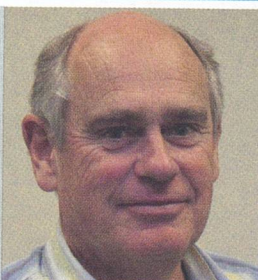


From left: Horowhenua Youth Voice members Anna Tate, Jasmine Burr and Jasmine Bromfield enjoy the Hoedown at Levin Events Centre.

Kere Kere Ward



David Allan 06 363 7674



Anne Hunt 06 363 7750



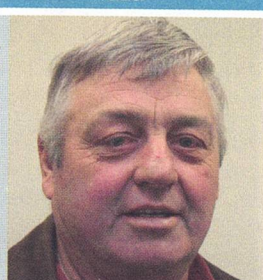
Nathan Murray 06 368 6108

Waiopehu Ward



Robbie Shaw 06 362 7075

Miranui Ward





From left: Councillor Anne Hunt; Brett Calkin, Palmerston North Rural Area Commander; Sue Milligan (Christopher's partner); Councillor Tony Rush; Constable Christopher Watkin; Mayor Brendan Duffy; Councillor Victoria Kaye-Simmons; Acting Central Districts Commander Pat Handcock; Sergeant David Pike; Senior Sergeant Willie Roy

Officer's bravery celebrated

The bravery of a local Police Officer was celebrated at the Horowhenua District Council meeting in July.

Horowhenua District Council Mayor Brendan Duffy presented Constable Christopher Watkin with a Certificate of Merit from the Royal Humane Society of New Zealand in recognition of the "courage and humanity" he displayed at an incident on 9 May 2010 at Hokio Beach.

In a letter, the Royal Humane Society said Constable Watkin's actions had prevented a likely fatality, after a boat containing four men capsized in heavy seas:

"The sea was rough with breaking waves approximately 3 to 4 metres high. Three of the four men made their way to the shore but the fourth could not and when Police Officers arrived, he was seen to be in difficulty being battered by the waves between 150 and 200 metres out in the surf. He appeared to be clinging to something and was making no attempt to swim.

"Constable Watkin removed his uniform and proceeded to swim out to him. The conditions were difficult. When he reached the 21-year-old man he found that he was in a state of panic, exhausted and apparently unable to swim. Without a life-jacket, he was clinging to a petrol can for buoyancy. The man, being bigger than his rescuer was and fully clothed and was a heavy weight to handle. Constable Watkin turned him on his back and proceeded to tow him back to shore, taking advantage of the surf for assistance."

Constable Watkin said it he was honoured to receive the award, but did not think of himself as a hero. He said he had some knowledge of rescue practice from his time in the British Marines (Royal Marines Commando Unit) though this was his first real-life rescue.

"I had no hesitation going out. The guy was in a panic and couldn't swim," he said.

Are you entitled to a rates rebate?

If your household has a combined income of less than \$23,240, you could be eligible for a maximum rates rebate of \$580 this year. Those earning over \$23,240 may also still qualify for a lower rebate.

About 3,000 Horowhenua residents are expected to be eligible for the rebates. Superannuitants, Work and Income clients and families on low incomes are encouraged to contact Council to find out whether you are eligible for a rebate.

Phone 06 366 1050 between 8 to 19 August 2011 to make an appointment or email your name and contact phone number to ratesrebates@horowhenua.govt.nz. There is some information that you will need to supply - check out the notice on page 7 for details, or visit our website www.horowhenua.govt.nz. Calls after 19 August should go to 06 366 0999.



Family violence strategy adopted

The Community Wellbeing Executive has adopted a strategy aimed at reducing the incidence and severity of Family Violence in Horowhenua.

The New Zealand Police and the Horowhenua Abuse Liaison Team (HALT) which is a collaboration of local agencies, have been working closely together for several years on the issue of family violence.

Horowhenua District Council Community Development Manager Monique Davidson said Council's aim was to support and assist with the excellent work that was already underway in the community. "The strategy is not something new – it's simply about bringing together information on what is already happening and recognising the community's strengths and needs. We hope that having the strategy will enable us to advocate for greater funding and support," she said.

Some of the key actions and projects outlined in the strategy include the development of a Family Violence Action Group, providing a full-time Womens Refuge Field Coordinator in Horowhenua, raising the public profile of the issue of Family Violence through communications activities and events, improving engagement with local Iwi and in the longer term, establishing a Safe House in the District.

Delphi Winters, HALT Coordinator says "We welcome a Family Violence Strategy that supports our established collaboration and strengthens the momentum going forward."

Sergeant John Battersby says "The strategy recognises that Family Violence is a community problem and community initiatives are required for positive improvements to be made toward reducing the harm it causes."

Rugby Balls to promote the District

Two giant inflatable rugby balls will be used to help promote the Horowhenua District during the Rugby World Cup 2011 and beyond.

In July, Horowhenua District Council agreed to an application by the Horowhenua Kapiti Rugby Football Union under the Council's Major Events Fund to purchase the two 7 metre x 4 metre balls.

The balls will be moved around the District to promote different local events. The rugby balls will be made available to community groups wanting to promote activities or events and will be aimed at "capturing the eye" of visitors and the general public and encouraging them to stop or stay. It will also recognise the District's support for the national event – complementing the Rugby World Cup street flags that will be displayed in Levin, Shannon and Foxton.

In a letter to the Council, Horowhenua Kapiti Rugby Football Union Chief Executive Corey Kennett said "The Rugby World Cup 2011 celebrations will offer the opportunity for New Zealand to become an international showcase and also provide a catalyst for business stimulus before, during and after the scheduled events. Visitors will pass through the Horowhenua from all parts of the world. A number will 'stay over' for convenience or because we may appear to be an appealing area to visit.... While representing just one facet of sport, the football icon would distinguish the Horowhenua as a sporting District and a strong supporter of all sports."

The Horowhenua Kapiti Rugby Football Union will take responsibility for the care, storage and booking of the balls which will cost \$5,500 each and will be available from late August.

Rugby World Cup Trophy in Levin

The Rugby World Cup (RWC) Trophy, known as the 'Webb Ellis Trophy' arrived for a brief visit to the Levin Memorial Hall this month. The magnificent gold cup was on a nationwide roadshow and Levin was fortunate to have a short time with the trophy.

The Official RWC 2011 Roadshow is touring the country from 4 July to 31 July giving fans across New Zealand the

opportunity to get a glimpse of what RWC will really be like when it reaches our shores on 9 September.

The New Zealand Rugby Union has also taken the trophies out of the trophy cabinet and is taking them on a nationwide tour.

Locals, armed with cameras, went along to see the Bledisloe Cup, Investec Tri Nations Trophy, Hillary Shield, IRB Women's Rugby World Cup and the IRB Junior World Championship Trophy up close.

Corey Kennett of the Horowhenua-Kapiti Rugby Football Union with the Webb Ellis Trophy.





Shannon spruce-up completed

Work has now been completed on a spruce up of the Shannon town centre. The \$30,000 landscape enhancement at the junction of Ballance Street and Plimmer Terrace involved the addition of old-style seating, gardens, bollards, chains and brickwork to recognise and build on Shannon's unique historic style and character. The recent work enhances the other beautification

work that has been completed in the past and will help to enhance the town's appeal as a visitor destination.

The project was one of the ideas suggested by Shannon residents in the development of the Long Term Community Plan in 2009. The installation of new street gardens at the intersection includes mass plantings of carpet roses to match existing beds.

Emergency building team training

The Horowhenua Emergency Response Building team has held its first training session. The team is currently made up of about 10 skilled volunteers from the local building industry.

The team would be activated in a large scale disaster situation – such as an earthquake or flood. Building Advisory Officer Tim Taylor says in the event of a disaster it's imperative that the integrity of buildings can be assessed quickly and effectively to determine whether or not they can continue to be used for their designated purpose.

"Existing staff within Council's building unit would not necessarily be able to cope with the added demands over and above normal duties – hence the need for these teams. Information gained when carrying out assessments is also vital to Council and its emergency service partners when making decisions about providing a coordinated response," he says.

Tim says the formation of a local response team has been part of Council's plans for some time, but the recent Christchurch earthquakes have provided added impetus.

The first training session was led by Ross Brannigan from Horizons Regional Council who explained the process for Civil Defence Emergency Management in Manawatu-Wanganui, which is based on regional boundaries and combines local councils, emergency services, health boards and other organisations to take a highly coordinated approach to emergency management.

Council is looking for more people to join this team. Applicants will need knowledge of the New Zealand Building Code. If you're interested in joining the Emergency Response Team, please email Tim at timft@horowhenua.govt.nz

Photos of missing Mayors wanted

The Horowhenua District Council and Foxton Historical Society are working to compile a complete set of photographs of all those who have served as Mayor of Foxton between 1888 to 1988. However so far, we've been unable to locate photographs of two of the Mayors – so we need your help.

The photographs that are missing are those of Thos Wilson and AJ Gibbs. Thos Wilson, who managed the Moutoa Estate, was Mayor

of Foxton in 1890. AJ Gibbs was Mayor in 1912 – 1913 and was a flaxmiller who built the large house at the northern end of Park Street that later served as a youth hostel before it burnt down.

If anyone can assist in obtaining photographs of either of these two gentlemen, please contact Dennis Cole at Horowhenua District Council on Ph 06 366 0999 or email denniscc@horowhenua.govt.nz or Tony Hunt on Ph 06 363 6846 or email tony_and_judith@xtra.co.nz.



Public Notices

Waiopahu Ward By-Election 2011

Nominations for the Waiopahu Ward By-Election have now closed with nine candidates confirmed. Voting papers will be distributed to all electors listed in the Electoral Roll. Voting (by postal ballot) opens on 27 July 2011 and completed voting papers must be returned in time to reach the Electoral Officer by **noon on Thursday, 18 August 2011.**

A preliminary result will be available shortly thereafter. Only those residents and ratepayers who are registered electors in the Waiopahu Ward will receive voting papers or will be entitled to vote. For further information including the list of candidates please visit our website www.horowhenua.govt.nz or www.electionnz.com.

Water Notice

Some plumbing fittings potentially allow minute traces of metals to accumulate in water left in the fittings for several hours. Although the health risk is small, the Ministry of Health recommends you flush a mugful of water from your drinking-water tap each morning, or after a long absence from your property, to remove any metals that may have dissolved from the plumbing fittings.

For the purpose of water conservation, it is suggested you could use this water for watering plants or dish-washing.

This simple precaution is recommended for all households in New Zealand, including those on public and private water supplies, and properties using roof water or bore supplies. For more information, contact the Council on Ph 06 366 0999.

Annual Plan 2011/2012

Copies of Council's Annual Plan for 2011/2012 are available now from Council service centres and libraries and also on Council's website www.horowhenua.govt.nz. Large print versions of the document are also available for viewing at Council service centres and libraries.

Are you entitled to a Rates Rebate?

There are changes to the Rates Rebate Scheme for the rating year beginning 1 July 2011:

1. The maximum rebate has increased from \$570 to \$580
2. The income threshold has increased from \$22,340 to \$23,240

Get a rates rebate application form from the Horowhenua District Council or from www.ratesrebates.govt.nz.

Superannuitants, Work and Income clients, and low income families may be eligible for a rebate.

Call 06 366 1050 between 8 to 19 August 2011 to make an appointment or email your name and address to ratesrebates@horowhenua.govt.nz. Bring:

1. Proof of income (before tax) for the tax year ended 31 March 2011;
2. Your rates notice, including you regional rates notice; and
3. Proof of your partner/joint home owner's income if living together.

Calls after 19 August should be made to 06 366 0999.

Horowhenua Tertiary Education Scholarships

Two or three scholarships, valued at \$2,500 each, are awarded annually by Horowhenua District Council. If you can answer yes to the questions below, you may be eligible to apply for a Horowhenua District Council Tertiary Education Scholarship.

- Are you a Year 13 student currently studying at a secondary school in the Horowhenua region OR have you previously studied at a Horowhenua secondary school and are now in your first or second year of tertiary study?
- Are you planning to study or currently studying a qualification in one of these areas:
 - Planning
 - Environmental Management
 - Civil Engineering.
- Would you like a guaranteed job at the end of your studies plus ten weeks of paid employment during your holiday breaks?

As a scholarship recipient, you will receive:

- \$2,500 toward your tertiary study fees.
- Paid holiday employment of up to ten weeks with Horowhenua District Council.

To find out more, please pick up a copy of the Tertiary Education Scholarships brochure from a Council service centre, visit our website www.horowhenua.govt.nz or contact Colette Bennie on (03) 366 0999 or email coletteb@horowhenua.govt.nz

Applications for 2012 scholarships close on **31 October 2011.**

Boil Water Notice

The Precautionary Boil Water Notice is still in place for Shannon and Tokomaru. This means that the Horowhenua District Council advises boiling cooking and drinking water before use.

Council Meetings

Horowhenua District Council Ordinary Meeting

Council Chambers, 126 Oxford Street, Levin
Wednesday, 3 August 2011 at 4.15pm

Speaking rights on any matter contained in the relevant Agenda are available to the public. Those wishing to speak will be given a maximum of five minutes and should first register their interest with the Meeting Secretary Karen Corkill, Ph 06 366 0999 ext 6840, by 12 noon on the day of the meeting.

Foxton Community Board Ordinary Meeting

Foxton Service Centre, Main Street, Foxton
Monday, 22 August 2011 at 6.30pm

Check out the following websites for local community information:

www.youthconnection.co.nz
www.disabilityconnection.co.nz
www.athomecare.co.nz

What's Happening

29 July 2011 (Start Date)

Levin Performing Arts presents 'Little Shop of Horrors'

Levin Performing Arts presents 'Little Shop of Horrors' a rock musical by composer Allan Menken and writer Howard Ashman, about a hapless florist shop worker who raises a plant that feeds on human blood. Directed by Darlene Mohekey, Musically directed by Baji Brown. At the Levin Performing Arts Centre, 655 Queen Street, Levin Meals available every Fri and Sat. Full bar facilities. Tickets Adult \$20, Student \$15, Meal: + \$25 available at Merediths Bedding & Linen, 194 Oxford Street, Levin 06 368 7520. Dates: 29 & 30 July 8.00pm 5 & 6 Aug 8.00pm 12 & 13 Aug 8.00pm & Sun 14 Aug 2.00pm 19 & 20 Aug 8.00pm. A percentage of proceeds from ticket sales will go towards the Horowhenua Cultural and Community Centre project, Te Takere.

2 August 2011

Swim Fitness Launch (FREE)

7.30pm, Levin Aquatic Centre, Queen Street, Levin. Would you like some tips on how to improve your swimming technique from qualified staff? Are you in training for, or looking to enter a multi-sport event? Are you seeking a healthy, low impact cross training activity to complement other sports, or do you simply want to keep fit? Swim Fitness classes are aimed at sportspeople and athletes seeking to improve their technique, endurance, speed or fitness in the water through coaching by qualified staff. To find out more, come along to our FREE launch event.

6 August 2011

Heartland Championship: Horowhenua-Kapiti v South Canterbury

2.30pm, Horowhenua Community Trust Domain, Bath/Salisbury Street, Levin.

14 August 2011

Junior Splash

10.00am - 12noon, Levin Aquatic Centre. 7years and under. Entry \$5.00 per family (2 adults + 2 under 7's) an extra \$1 for additional children. Mini dash inflatable, kids music, morning tea.

17 August 2011

Electra Business Breakfast in Foxton (in association with Nature Coast Enterprise & Foxton Tourism Development Association)

7.15am, Foxton RSA. Dale Williams is 3rd term Mayor of Otorohanga, Chair of Mayors Taskforce for Jobs, and creator of the unique and successful Otorohanga Youth Programmes concept. His experiences in supporting young people to engage positively within their communities are refreshing and entertaining. The Otorohanga journey from where it was to where it is now is fascinating and will be of real interest to anyone involved in employing, training, educating or raising young people! Seats are limited so bookings are essential To book your space, email maureen@naturecoast.co.nz, call 06 364 5570 or register online at <http://business.naturecoast.co.nz/business-breakfasts.html> There is a small charge to attend each breakfast (Members \$15 and Non-Members \$20).

20 August 2011

Stamp Exhibition - NZ One Frame Interclub Competition

A display of some of the best one frame stamp exhibits in New Zealand. On from 10am to 4pm at the Memorial Hall, Chamberlain Street, Levin. Stamp dealers will be in attendance - admission is free. Hosted by the Horowhenua Philatelic Society.

26 August 2011

Friends of Horowhenua Library Quiz Night

7.00pm, Horowhenua District Council Chambers, Oxford Street, Levin. Tickets available from Levin Library. A fundraiser for the Horowhenua Cultural & Community Centre project, Te Takere.

27 August 2011

Heartland Championship: Horowhenua-Kapiti v King Country

2.30pm, Horowhenua Community Trust Domain, Bath/Salisbury Street, Levin.



QUALITY DESIGN

At Designgroup Stapleton Elliott we strive to design the very best buildings for our clients: buildings that both answer the material, spiritual and environmental needs of the people who will live in them.

Talk to our innovative and award winning architects to discover how we can create your ideal solution.

PHONE. 06 357 4534

EMAIL. pn@designgroupstapletonelliott.co.nz

WEB. dgse.co.nz



designgroup

stapleton elliott

Horowhenua DISTRICT COUNCIL

Ph. 06 366 0999

Fax. 06 366 0983

Private Bag 4002, Levin 5540
126 Oxford Street, Levin 5510

www.horowhenua.govt.nz
enquiries@horowhenua.govt.nz

Customer service hours:
9.00 am - 5.00 pm, Monday - Friday
9.30 am - 5.00 pm, Wednesday

Horowhenua is home to more than 30,000 people. Council's Customer Services Team recognise that most of our customers have no choice as to where they go to obtain the services that we, as a Council, provide.

We need to ensure that our customer service standards are of such a high level that ALL enquiries are handled efficiently, consistently and effectively, to give total customer satisfaction.

We strive to ensure excellent customer service so we can achieve our team mission statement: *"Striving to surpass the individual needs of our customers through committed, professional service."*

Proudly printed in Levin by Graphic Press & Packaging Ltd.