



CITY OF GROVELAND
Fire Department
2022 Annual Report





Contents

02	Current Mayor & City Council	14	Drone Unit
03	Chief's Message Organizational	15	Life Safety & Community Outreach
04	Organizational Chart	16	Training and EMS Division Fire
05	Core Values	17	Inspector
06	City of Groveland Vision & Mission Statements	18	ISO Rating
07	Command Staff	19	Budget
08	Fire Department Operations	20	Awards
10	Incident Data	22	Community Snapshots
12	Emergency Management	23	Contact
13	Special Operations		

Current Mayor & City Council



Evelyn Wilson
Mayor, District 1
Evelyn.Wilson@groveland-fl.gov



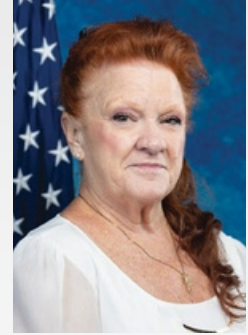
Mike Radzik
Vice Mayor - District 2
Mike.Radzik@groveland-fl.gov



Barbara Gaines
Council Member - District 3
Barbara.Gaines@groveland-fl.gov



Richard Skyzinski
Council Member - District 4
Richard.Skyzinski@groveland-fl.gov



Dina Sweatt
Council Member - District 5
Dina.Sweatt@groveland-fl.gov

Founded in 1922, Groveland consists of about 55 square miles with 6,600 acres of open water. Groveland is situated just 35 miles from Walt Disney World and about 33 miles west of Orlando.

Groveland is experiencing rapid growth. The population has nearly tripled in the past 12 years, and city leaders have embarked on a strategic plan to intentionally shape the community's future growth. Groveland is garnering attention for its safety, diversity, affordability, rural lifestyle, and natural beauty. The city has 11 parks with a waterfront park complete with an amphitheater, splash pad, skate park, boat ramp, boardwalk, sports courts, a playground, and walking trails.

In February 2022, Groveland celebrated its 100th anniversary of incorporation with several events. In June 2022, Community and Economic Development published a Strategic Plan that sets a vision for the City of Groveland for the next 10 years. A strategic priority is cultivating an eco-agrarian lifestyle that connects Groveland residents and visitors with nature and each other.

While the City of Groveland is fast becoming a premier city, Groveland continues to maintain a reputation as the 'City with Natural Charm.'



Chief's Message



Welcome to the Groveland Fire Department. As both a citizen and an employee of Groveland, it is an honor and a privilege to serve as the Fire Chief for the City with Natural Charm.

The Groveland Fire Department (GFD) has an Insurance Services Office (ISO) Public Protection Classification rating of 03/3X, which places GFD in the top 10% of all fire departments evaluated by ISO in the United States.

Through an all-hazards approach, our three advanced life support fire engines are committed to providing the highest level of emergency services, in a professional, respectful, and ethical manner, while striving to heighten our commitment to excellence to those citizens and visitors we have taken an oath to serve. GFD acknowledges the core values of the fire service, and works diligently to apply them daily. Professionalism, Respect, Integrity, Dedication and Excellence (P.R.I.D.E.).

Groveland Fire Department believes in being actively engaged in the community and will do so through a robust Community Outreach program that reaches all age groups, ethnicities, political and religious affiliations. In closing, we will continue our unwavering efforts to improve our service, through education, training, staying resolute to community risk reduction and focusing on the health and safety of our firefighters, while at the same time being fiscally responsible to the citizens of our fine City.

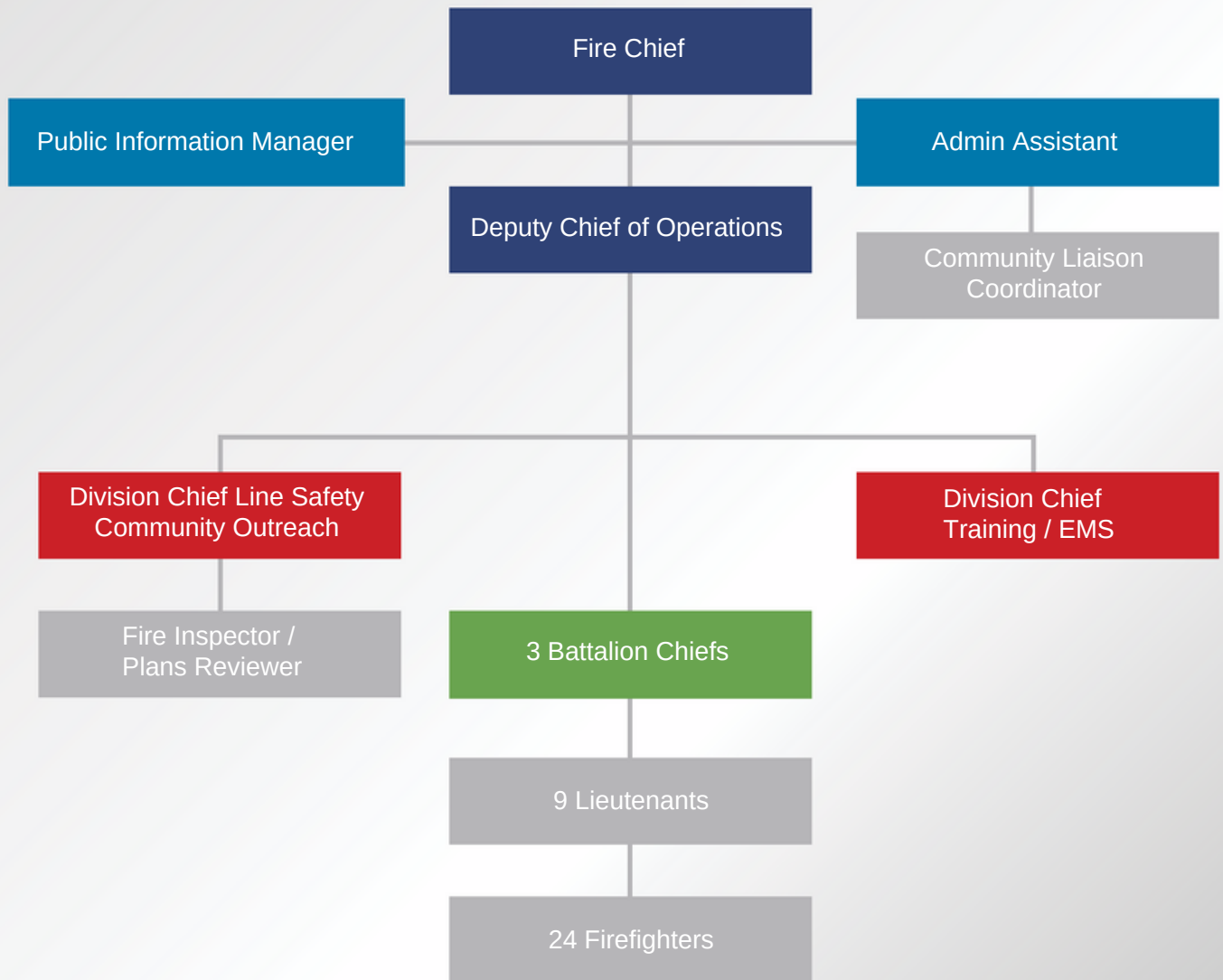
I look forward to leading our department into the future and doing so in the most efficient and effective manner possible to serve our community.

Sincerely,

A handwritten signature in blue ink that reads "Kevin Carroll". The signature is written in a cursive, flowing style.

Fire Chief Kevin Carroll

Organizational Chart





City of Groveland Vision & Mission Statements

Vision

Groveland is a collection of towns, villages, and hamlets interweaving a diversity of people into an eco-agrarian landscape, embodying the following core values: Connectivity, Vitality, Knowledge, and Heart.

Mission

The City of Groveland is an ecosystem intentionally connecting safety, service, and innovation to support a vibrant welcoming community with natural charm.



Command Staff



Kevin Carroll
Fire Chief



Erich Thiemann
Deputy Fire Chief / Emergency
Management Coordinator



Steve Smith
Division Chief / Life Safety and
Community Outreach



Josh Walsh
Division Chief / Training and EMS



Frank Patterson
Fire Inspector / Plans Examiner



Christie Higdon
Public Safety Executive
Administrative Assistant

Fire Department Operations



The Deputy Fire Chief oversees the day-to-day operations of all Fire, EMS, and Special Operations functions. This includes policy development, daily monitoring of emergency calls, statistical data collection and analysis, supervision of Community Outreach and Fire Prevention, and Fire and EMS training. This position ensures annual goals are met, processes new hires, oversees disciplinary proceedings, responds to emergency calls, and other related duties.

As part of Fire Department Operations, the Deputy Chief oversees our Special Operations Section. This section includes firefighters who are trained to the level of Rescue Diver and who function as a Dive Team member or a Rapid Diver. Special Operations is focused on rapid responses to emergency calls that involve bodies of water such as lakes, rivers, and ponds where a victim needs rescue. In 2022, GFD responded to 10 water-related incidents in which numerous individuals were rescued while on the water as well as one body recovered. One of our newest tools is underwater drones. Large areas may be surveyed rapidly underwater using the tethered camera system prior to divers entering the water. Drones can also be used in bodies of water that are unsafe for divers to enter. Training with this new system is ongoing.



The Groveland Fire Department responds to emergency calls not only within Groveland, but to areas within the contracted Interlocal Service Boundary Agreement. At times we respond to calls beyond the ISBA as well. Our total call volume includes responses within Lake County, Mascotte, Clermont, Leesburg, and Minneola. All fire and EMS units in Lake County are assigned to emergency calls by the 911 dispatch center. Using GPS technology, dispatch can assign the proper resource to a call, ensuring the quickest response time.



Station 1

The City of Groveland Public Safety Complex
6825 SR 50
Groveland, FL 34736

- Advanced Life Support Fire Engine 95
- Battalion Chief 95
- Marine 95
- Brush 95
- Drone 95
- Lake County EMS Medic 311
- Event 95

Station 2

193 Cherry Valley Trail
Groveland, FL 34736

- Advanced Life Support Fire Engine 94
- Brush 94
- Reserve Fire Engine 95-1



Station 3

20415 Independence Blvd.
Groveland, FL 34736

- Advanced Life Support Fire Engine 96

Incident Data

- Dispatches to Calls for Service: **3,320**
- Incidents: **3,239** (All Cancellation Calls Removed) (3,190 in 2021)
- Individual Unit Responses Within the 3,239 Incidents: **4,090** (Multiple Units May Respond to the Same Incident) (3,760 in 2021)
- Individual Unit Responses Inside Groveland: **1,848**
- Individual Unit Responses to Groveland ISBA Only (Lake County): **628**

Property Value vs Fire Loss and Value Saved

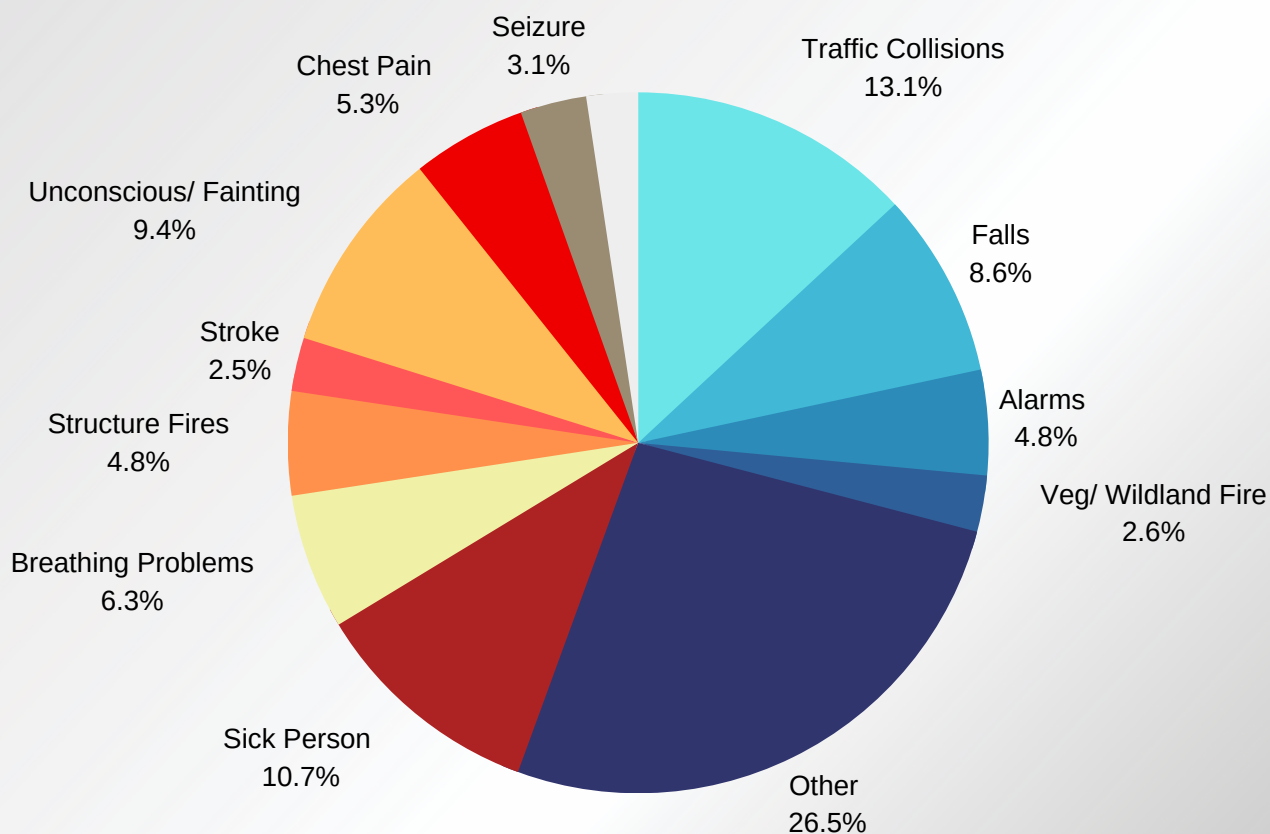
Pre-Incident Value	Fire Loss	Estimated Property Value Saved
\$4,108,200	\$597,550	\$3,510,650

- Individual Unit Responses Beyond Groveland and ISBA: **763**
- Unit Responses to Lake County not in the Groveland ISBA: **713**
- Mascotte: **107**
- Clermont ISBA: **5**
- Leesburg ISBA: **259**
- Unit Responses to Clermont: **12**
- Unit Responses to Leesburg: **8**
- Unit Responses to Minneola: **30**



Incident Data 2022

2022 Calls By Incident Type



Total Other Calls by Frequency

Service Call	69	Allergic Reaction	24	Lightning Strike	3
Advanced Send	67	Gas Leak	22	Odor	3
Hemorrhage/ Laceration	56	Electrical Hazard	21	Aircraft	2
Heart Problems	50	Choking	13	Fuel Spill	2
Medical Alarm	47	Headache	10	Inaccessible Incident	2
Cardiac Arrest	46	Water Rescue	10	Inter-Facility Eval	2
Traumatic Injury	45	Stab, Gunshot, Trauma	8	Suspicious Package	2
Overdose/ Poisoning	42	Watercraft in Distress	7	Burns	1
Assault	39	Animal Bites	6	Carbon Monoxide	1
Abdominal Pain	38	HAZMAT	6		
Vehicle Fire	38	Heat/ Cold Exposure	6		Total: 858
Psych/ Suicide	34	Special Detail	6		
Smoke Invest	33	Pregnancy/ Childbirth	5		
Back Pain	28	Eye Problem	4		
Unknown Problem	27	Fuel Odor	4		
Diabetic Problem	26	Structural Collapse	3		

Emergency Management

The administration of the City of Groveland is very concerned about the safety of its citizens. It is the policy of the City of Groveland to provide a contingent of first responders to save lives, aid the injured, evacuate citizens, and protect property. The City and its employees will maintain a state of readiness for response to hurricanes and other natural disasters. Readiness will be accomplished by reviewing plans, inspecting and maintaining equipment, updating phone lists, rosters, maps, and conducting training. All employees will be ready to report for complete or limited mobilization when hurricane or severe weather conditions develop.

It is the policy of the Groveland Fire Department to establish a unified command response to natural and man-made disasters. The City of Groveland Fire Department provides fire suppression, land and waterborne search and rescue, humanitarian aid, hazardous materials response, public assistance and critical mission support to city government during all such disasters.

The City of Groveland could experience disaster conditions that would require the Groveland Fire Department to provide emergency services including humanitarian aid and critical mission support. Disaster conditions requiring these services could be brought on by natural phenomena such as hurricanes, floods, tornadoes, fires, storms, or any combination thereof.

The City of Groveland's Emergency Operation Center is located at The City of Groveland Public Safety Complex (6825 State Road 50 Groveland, FL. 34736) and can be activated for disaster responses.



Special Operations

Dive Team

The Dive Team was founded in 2007 as a special unit of the Groveland Fire Department. The team responds to all water rescue calls within our coverage area and is called out to other cities in need of mutual aid. Most of the underwater missions are conducted by feel and touch due to the dark waters and poor visibility. The diver's remaining senses must compensate for this lack of sight. Since failure is not an option, we dive as one with a shared vision in mind to complete each mission.



Training

The team trains year-round in various types of weather and water conditions. This training, combined with the latest advancements in diving equipment, affords the team the opportunity to offer value-added services to the City of Groveland.

Training operations include:

- Surface Water Rescue
- Underwater Rescue Operations
- Underwater Recovery Operations
- Underwater Search Operations
- Boat Based Operations

Dive Team Equipment

The team is equipped with the following gear:

- Wetsuits for each diver
- Full face mask with integrated communication system
- Commercial grade buoyancy control devices
- Gloves, fins, hood, and underwater flashlights
- Surface base communication system
- Garmin 340c
- 10 aluminum dive tanks and 2 ponies (back-up air)
- 17 foot rescue boat



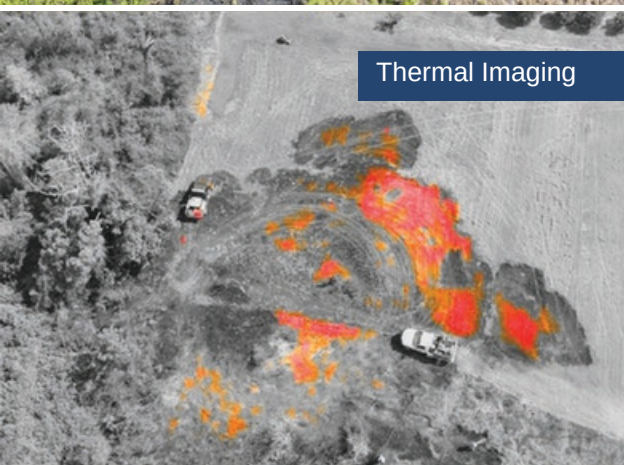
Drone Unit

Unmanned Aircraft System Operations (Drone)

It is the policy of the Groveland Fire Department that only duly trained and authorized GFD personnel may deploy an unmanned aircraft system (UAS) when such use is appropriate in the performance of official duties.

All deployments of UAS shall be authorized by command level personnel, be in state and federal legal and regulatory compliance. UAS may be used for the following purposes, which may be updated as necessary:

- Situational awareness
- Search and rescue
- Tactical deployment
- Visual perspective
- Scene documentation
- GFD assistance
- Public demonstration
- Training



Life Safety & Community Outreach



Division Chief Steve Smith oversees this division, which is a combination of Life Safety, or fire inspections, and Community Outreach. The intent of our Community Outreach Program is to foster a relationship with our community by establishing a partnership that engages us together in a common goal – to improve overall public safety, with a specific focus on the most vulnerable populations, the very young and the elderly. We will do this by actively engaging with our citizens by delivering a multitude of programs that will improve the overall health and safety of our community. Chief Smith often attends

community events where he meets members of the community and distributes public education materials such as fire safety pamphlets and home smoke detector information.

Chief Smith also supervises our Fire Inspector who conducts annual fire inspections of all commercial occupancies in the City of Groveland. Smith maintains the inspection database and performs quality assurance reviews of completed inspections. He is also a certified Fire Inspector.

While busy with Community Outreach duties, Chief Smith is also our logistical coordinator. He is responsible for the maintenance, testing, and purchasing of our firefighter protective gear, air packs, and air masks. Chief Smith also coordinates annual testing and maintenance of all ladders, fire hoses, and fire engine pumps.



Community Outreach and Public Education - 2022

Number of Program Deliveries Completed by Chief Smith: **22**

Hours Spent on Program Development Department-wide: **71**

Total Hours Spent on Program Deliveries Department-wide: **151**

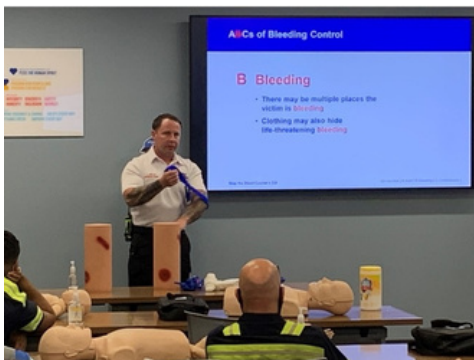
Total Audience (Estimated): **4,426**

Training and EMS Division



Division Chief Josh Walsh heads the Training and EMS Division. His duties include overseeing daily EMS operations and the training of our firefighters, EMTs, and Paramedics. Chief Walsh develops training modules that meet or exceed both state and departmental requirements. Through these training programs, our EMTs and Paramedics accumulate ample hours of continuing education that allow them to meet the two-year requirement for state recertification. Chief Walsh also develops, delivers, and tracks fire-related training which is used as part of our ISO evaluation. Our officers, drivers, and firefighters must all meet annual training hour requirements set forth by ISO as well as NFPA 1410.

As part of his duties, Walsh performs required quality assurance and review of all reports generated by EMS calls. Report contents are evaluated for completeness, accuracy, and compliance with medical protocols and best practices. Any deficiency is addressed, and if need be, retraining and corrective actions are implemented.



Chief Walsh, through the Lake County Fire Chiefs Association, has been elected as Chair of the Operations and Training Group. This group evaluates county-wide training needs as well as develops standard operating procedures that are used by all fire departments in Lake County. Walsh is also a Special Operations Team member who assists the Special Operations Coordinator with training and equipment.

2022 Total Non-EMS Training: **10,172 hours**

ISO categories: Officer, Driver, Firefighter	Pre-Incident Fire Plans
Dive Training	Boat Operator Training
Vehicle Extraction	Drills

2022 EMS Training: **905 hours**

Medications	Protocols
Special Procedures	Pediatrics
OB/Gyn	Trauma
Cardiac	Medical Emergencies
Rescue Task Force	Autism Awareness

Fire Inspector



The fire inspector is responsible for fire prevention and life safety. The fire inspector performs annual inspections of every commercial structure and business within city limits. These inspections are required by the Florida Fire Prevention Code and ensure employees and customers are safe from preventable injuries. Inspections also educate and aid the business on fire safety to prevent a fire that would cause the business to close. Our goal is to keep our city's businesses open and their customers safe. The fire inspector also reviews plans, such as a change of occupancy for a tenant space to the one million square foot Turnpike Logistics Center at the intersection of Hwy

19 and S. Obrien Rd. These larger plan reviews can take several days to complete as they require multiple reviews to complete all disciplines, including:

- Architectural plans. These contain architectural drawings, structural drawings, mechanical drawings, and electrical drawings. From a small renovation to a completely new building, they are required for any change.
- Fire underground plans are the layout and design of the fire hydrants and the locations of the fire risers that supply the water to the fire sprinkler systems.
- The fire sprinkler plan shows the locations of the fire sprinklers, the piping, and the design criteria and layout of the systems within the building.
- Fire pump plans include the size of the fire pump and how many gallons per minute (GPM) the pump must meet to be able to supply the sprinkler systems inside.
- Fire alarm plans show the locations of all fire alarm devices and the main fire alarm control panel.
- Natural gas/ propane plans review the routing and location of the gas meter, gas piping, and propane tanks for protection from traffic and other damage.
- Vehicle refueling station tanks review the fire protection, fume venting, and protection from vehicles.
- Engineered fire protection systems are special systems that are fire code alternatives that must be designed by a fire protection engineer.

Fire Prevention Activities 2022

- Annual inspections: **326**
- Re-inspections: **109**
- Construction/change of occupancy inspections: **142**
- Construction plan sets reviewed: **160**
- Site plans reviewed: **100**
- Mascotte inspections: **13**

Total Inspections and Plan Reviews: 850



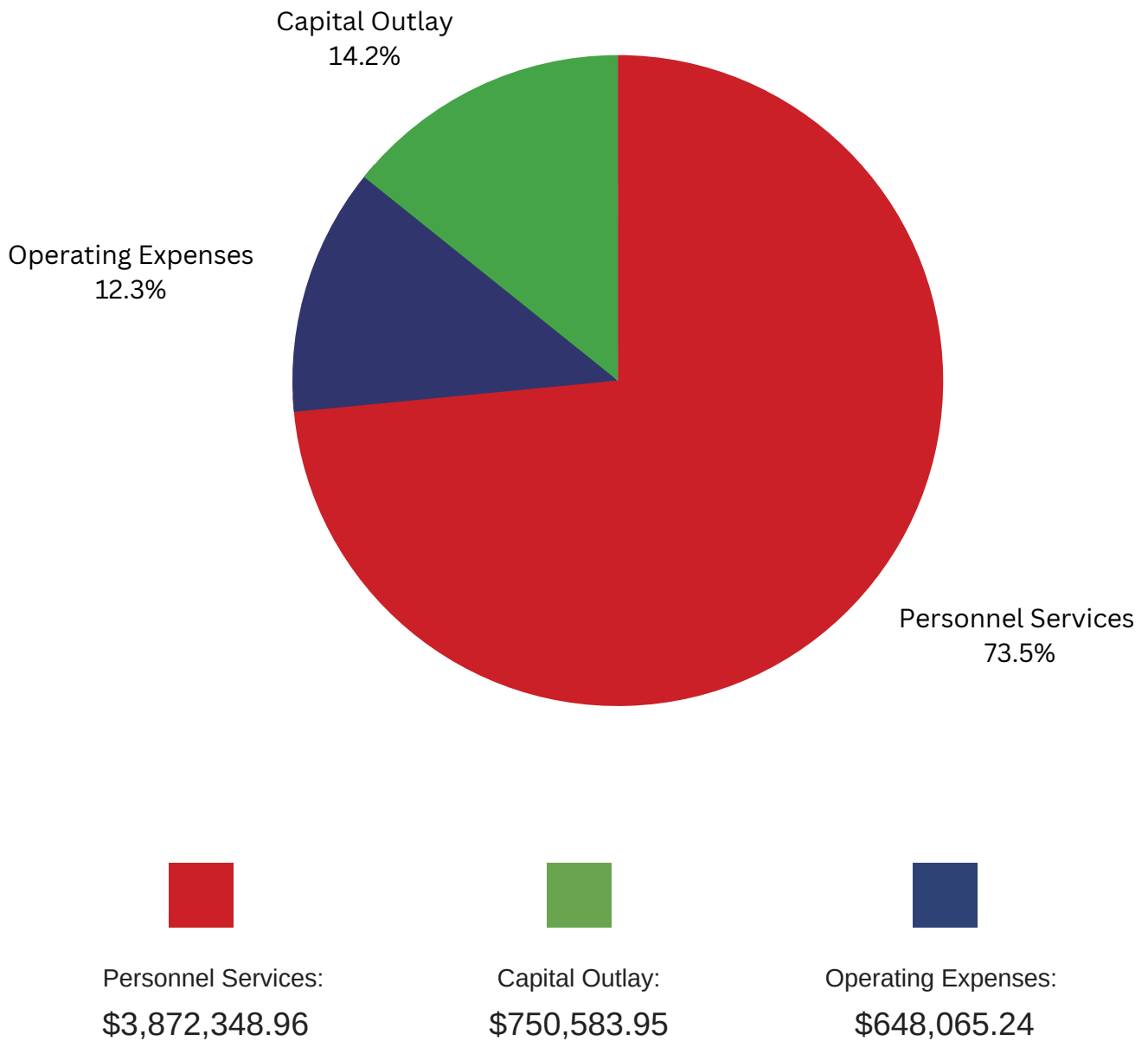
ISO Rating

An ISO Public Protection Classification Rating (PPC) is a score provided to fire departments and insurance companies. PPC scores range from m1- 10, with 1 being the best. **Currently, the Groveland Fire Department ranks among the top 8.5% of all fire departments in the United States.**

The Insurance Services Office (ISO), evaluates every aspect of the fire department, including engines, reserve engines, pump capacity, training records, personnel, deployment analysis, and each department's emergency communications. ISO also evaluates the water supply system, which includes the number of hydrants, inspection, maintenance, and flow of each hydrant. Finally, it evaluates community risk reduction efforts by reviewing the Fire Inspection and Prevention Division, fire safety education through community outreach, and fire investigation efforts, which are primarily conducted by the Florida State Fire Marshal's Office.



Groveland Fire Department Budget



Awards



Groveland Firefighter of the Year:
Abner Hidalgo

Fire Officer of the Year:
Lieutenant Joe Ridge



2022 (ICN) Challenged Champions
and Heroes Champion Leadership
Award: Fire Chief Kevin Carroll &
Deputy Fire Chief / Emergency
Management Coordinator Erich
Thiemann

Awards

In 2022, *Firehouse Magazine* featured the Public Safety Complex in their ninth annual Station Design awards showcase of fire and emergency services facilities



Groveland Public Safety Complex, Groveland, FL

The city of Groveland's new Public Safety Complex features a fire station that has administrative offices and a police station that has emergency dispatch. The building also serves as Groveland's emergency operations center. Space to accommodate the future growth of the fire and police departments is temporarily utilized by the city's building and permitting departments, which will relocate when a new City Hall is constructed.

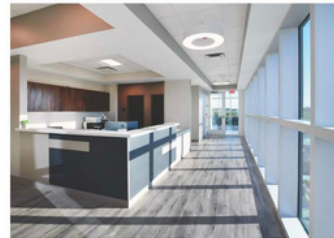
Groveland needed an iconic building to highlight its transition from an agricultural town to a rapidly growing modern city. Glass-curtain-wall entry towers on the building frontage serve to invite and to house the public areas. Adjacent concrete tilt-wall construction provides appropriate separation and security for fire and police operations. The glass entry pavilion will provide transit shelter for the planned Coast-to-Coast bicycle trail and a future bus stop.

The two-story building provides separate entrances and facilities for the fire and police departments. Fire operations are housed on the first floor. Separate bunkrooms, kitchen and dayroom accommodate a six-person crew (three shifts). There is a watch office and a turnout room that are separated from the decontamination room, laundry and showers. Four apparatus bays are flanked by an SCBA fill station and bottle storage room. Space for a Lake County Emergency Medical Services three-person crew is provided, including separate bunkrooms, dayroom and kitchenette. Providing these local accommodations for county EMS ensures rapid response for city inhabitants. Fire administration offices and a conference room are provided on the second floor.

Shared facilities within the complex include a large training room that can be used for community meetings as well as a fitness center that has locker rooms.

The first floor of the complex includes police dispatch and patrol. Police administration, detectives and crime scene investigations have offices that are on the second floor.

The site is landscaped with environmentally sensitive, drought-tolerant, native plant species.



FIREHOUSE
STATION DESIGN
AWARDS

SHARED FACILITIES
NOTABLE



GatorSkitch
ARCHITECTS & PLANNERS
gatorskitch.com

Official Project Name:

Groveland Public Safety Complex

Project City/State: Groveland, FL

Date Completed: Feb. 1, 2021

Fire Chief: Kevin Carroll

Project Area (sq. ft.): 33,490

Total Cost: \$9,250,000

Cost Per Square Foot: \$276.20

Architect/Firm Name: GatorSkitch

Architects & Planners

Website: gatorskitch.com

Design Team: GatorSkitch Architects

& Planners: Mike Latham, President/

Project Manager: Alex Busto, AIA, VP/

Architect of Record: Carissa Latham,

VP/GM; Bill Guidry, Construction

Administration: Tamara Levell, Senior

Designer: Amy McDaniel, Interior

Designer: Bret Dodd, Design Architect;

Andrew Benavides, Architectural Intern;

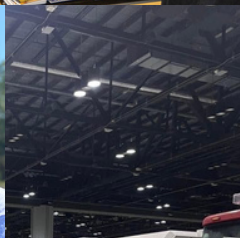
Jim Warner, Landscape Architect;

Civil: Highland Engineering; Structural:

Gutherman Engineering; MEP: Matern

Engineering

NOVEMBER 2022 | FIREHOUSE | 115





Contact



Fire Administration & Station 1:

The City of Groveland Public Safety Complex
6825 State Road 50 Groveland, FL 34736

Dial 911 for EMERGENCIES ONLY



Non-Emergency:

352-429-1209

Follow us on social media:



Facebook

@GrovelandFireDepartment



X / Twitter

@GrovelandSafety



Visit our website:

www.groveland-fl.gov/144/Fire

