

# **Microsoft®** | Solution Accelerators

## **Microsoft Assessment and Planning Toolkit**

Quick Start Guide

Version 1.0

Copyright © 2010 Microsoft Corporation. All rights reserved. Complying with the applicable copyright laws is your responsibility. By using or providing feedback on this documentation, you agree to the license agreement below.

If you are using this documentation solely for non-commercial purposes internally within YOUR company or organization, then this documentation is licensed to you under the Creative Commons Attribution-NonCommercial License. To view a copy of this license, visit <http://creativecommons.org/licenses/by-nc/2.5/> or send a letter to Creative Commons, 543 Howard Street, 5th Floor, San Francisco, California, 94105, USA.

This documentation is provided to you for informational purposes only, and is provided to you entirely "AS IS". Your use of the documentation cannot be understood as substituting for customized service and information that might be developed by Microsoft Corporation for a particular user based upon that user's particular environment. To the extent permitted by law, MICROSOFT MAKES NO WARRANTY OF ANY KIND, DISCLAIMS ALL EXPRESS, IMPLIED AND STATUTORY WARRANTIES, AND ASSUMES NO LIABILITY TO YOU FOR ANY DAMAGES OF ANY TYPE IN CONNECTION WITH THESE MATERIALS OR ANY INTELLECTUAL PROPERTY IN THEM.

Microsoft may have patents, patent applications, trademarks, or other intellectual property rights covering subject matter within this documentation. Except as provided in a separate agreement from Microsoft, your use of this document does not give you any license to these patents, trademarks or other intellectual property.

Information in this document, including URL and other Internet Web site references, is subject to change without notice. Unless otherwise noted, the example companies, organizations, products, domain names, e-mail addresses, logos, people, places and events depicted herein are fictitious.

Microsoft, Hyper-V, SQL Server, Windows, Windows 7, Windows Vista, Windows XP, Windows Server 2008 R2, Windows Server 2008, Windows Server 2003, Windows 2000 are either registered trademarks or trademarks of Microsoft Corporation in the United States and/or other countries.

The names of actual companies and products mentioned herein may be the trademarks of their respective owners.

You have no obligation to give Microsoft any suggestions, comments or other feedback ("Feedback") relating to the documentation. However, if you do provide any Feedback to Microsoft then you provide to Microsoft, without charge, the right to use, share and commercialize your Feedback in any way and for any purpose. You also give to third parties, without charge, any patent rights needed for their products, technologies and services to use or interface with any specific parts of a Microsoft software or service that includes the Feedback. You will not give Feedback that is subject to a license that requires Microsoft to license its software or documentation to third parties because we include your Feedback in them.

## Contents

Microsoft Assessment and Planning Toolkit .....	1
What the MAP Toolkit does.....	1
Key features .....	1
How it works .....	1
Microsoft technologies that work with the MAP Toolkit .....	1
To get started .....	2
Next steps .....	5



# Microsoft Assessment and Planning Toolkit

Thanks for using the Microsoft Assessment and Planning (MAP) Toolkit! The goal of this quick start guide is to provide you with the essential information you need to quickly get the MAP Toolkit up and running in your environment and immediately put it to use.

## ***What the MAP Toolkit does***

The MAP Toolkit is designed to let you quickly and easily perform an inventory of your hardware environment, assess your current IT infrastructure, and determine the right Microsoft technologies for your IT needs. The data and analysis provided by this toolkit simplifies significantly the planning process to migrate software, assess device driver availability, and obtain hardware upgrade recommendations. The MAP Toolkit also provides the ability to gather performance metrics from computers that you are considering for virtualization, and a feature to model a library of potential host and storage hardware configurations.

The MAP Toolkit is a powerful inventory, assessment, and reporting tool that can securely run in small or large IT environments. The inventory and assessment capabilities provided by the MAP Toolkit simplify the planning process for migrating your computers to Windows® 7, Windows Server® 2008 R2, and Microsoft® Office 2010. The server virtualization scenarios for the toolkit are designed to help you identify underutilized resources and the hardware specifications needed to successfully consolidate your servers using Microsoft Hyper-V™ technology. In addition, the toolkit can help you identify unmanaged assets, Microsoft SQL Server® components, and virtual machines in your environment.

## ***Key features***

The MAP Toolkit:

- Simplifies the planning process to migrate your laptops, desktops, and server computers to Windows 7, Windows Server 2008 R2, Windows Server® 2008, Windows Vista®, and Microsoft Office 2007.
- Inventories your infrastructure to assess and verify what is present in the existing environment to best determine your hardware and software readiness to help you plan for migration. For example, locating and reporting on instances of legacy operating systems, like Windows® 2000.
- Tracks software usage for compliance purposes.
- Assesses readiness and determines what needs to be done to successfully update all the hardware and software inventoried in your environment to the latest software and hardware standards.
- Helps you identify underutilized resources and the hardware specifications needed to successfully consolidate your servers using Microsoft Hyper-V™ technology.
- Runs securely in small or large IT environments without requiring you to install agent software on any computers or devices.

## ***How it works***

The MAP Toolkit uses Windows Management Instrumentation (WMI) to collect data in your environment without using agents. After the data is gathered, you can parse and evaluate it for specific hardware and software needs and requirements.

## ***Microsoft technologies that work with the MAP Toolkit***

The MAP Toolkit works with Windows® 7, Windows Vista, Windows® XP, Windows Server 2008, Windows Server 2003, Windows 2000 (both client and server), and Microsoft Office 2007.

## To get started

To get started with the MAP Toolkit, the first task to perform is inventorying the computers in your environment. Inventory assessment is the basis for all the scenarios mentioned previously and is the focus of this guide.

**Note** This quick start guide works from the premise that you have already downloaded and installed the MAP Toolkit. For more detailed information on configuring and using the MAP Toolkit, see the *Microsoft Assessment and Planning Toolkit Getting Started Guide*.

Inventory your computers by doing the following:

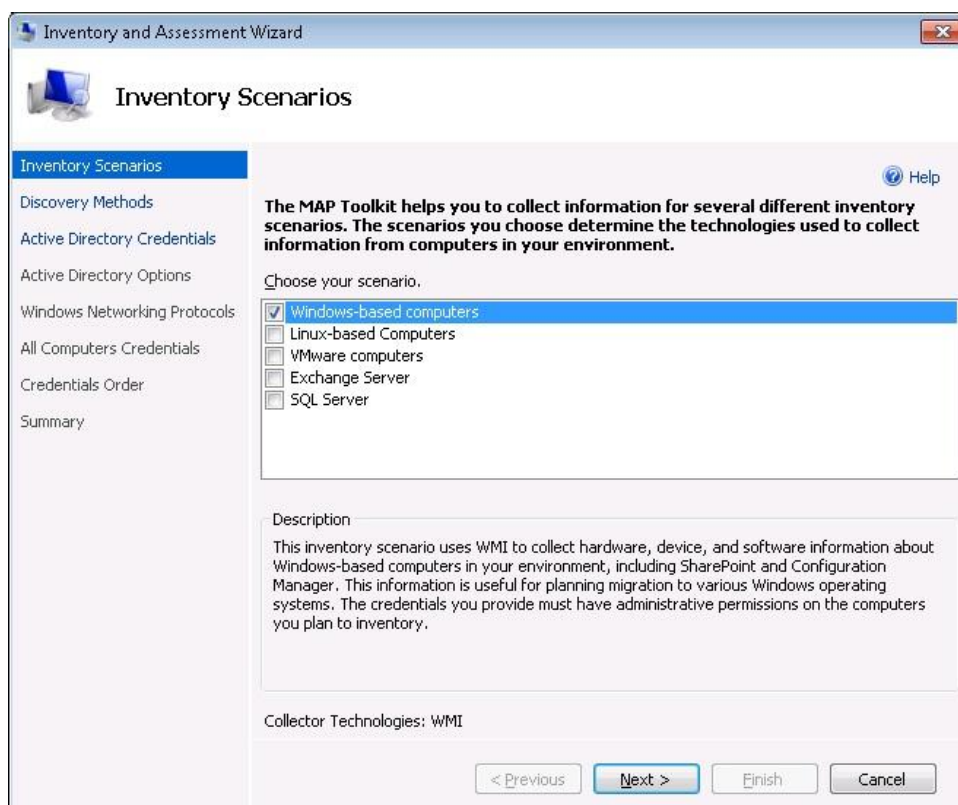
1. Open the MAP Toolkit.
2. Open the Inventory and Assessment Wizard.
3. Ensure that you have administrative permissions for all computers and virtual machine that you want to assess.
4. Determine the required credentials. To determine which credentials are required for your scenario, consult the following table. This table includes the inventory scenario and collector technologies that the MAP Toolkit requires to inventory each server product for software usage tracking. You can use a table like this one to organize your information for the Inventory and Assessment Wizard.

When the account for the credentials is a domain account, include the domain name. For example, *Domain\AccountName* or *AccountName@Domain*.

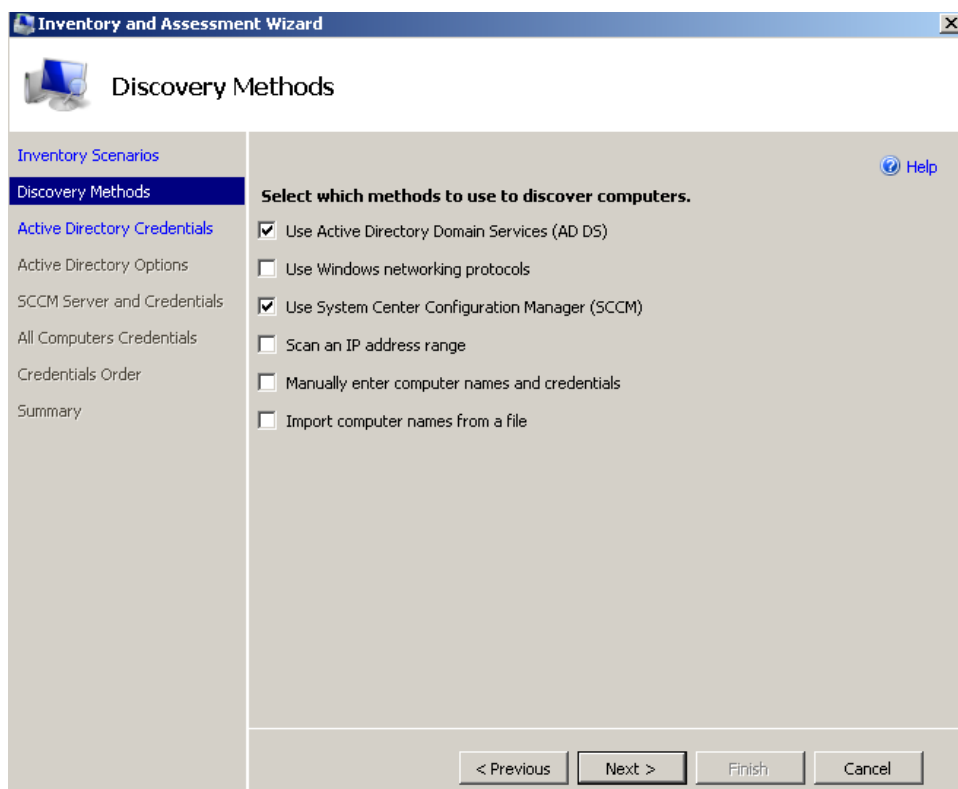
**Table 1. Credentials Required for Inventory**

Server product	Inventory scenario	Collector technology	Credentials
Windows Server	Windows-based computers	WMI	Account: Password:
Office SharePoint Server	Windows-based computers	WMI	Account: Password:
Microsoft SQL Server	SQL Server	WMI	Account: Password:
		Windows Authentication	Account: Password:
		SQL Server Authentication	Account: Password:

5. Choose the appropriate inventory scenario.



6. Choose one or more discovery methods.



7. Specify the credentials. On the **Active Directory Credentials** page, in the appropriate text boxes, type the domain, domain account, and password that the MAP Toolkit can use to connect to Active Directory, and then click **Next**.
8. Determine the method to provide the credentials. If you choose to use the **All Computers Credentials** option, define a set of credentials that the MAP Toolkit will use to access the computers that you plan to inventory.

**Note** You can also opt to **Enter Computers Manually** or **Import Computers from File**. For more information about these options, see the "Discovery Methods" section in the MAP Toolkit Help.

Complete the following substeps:

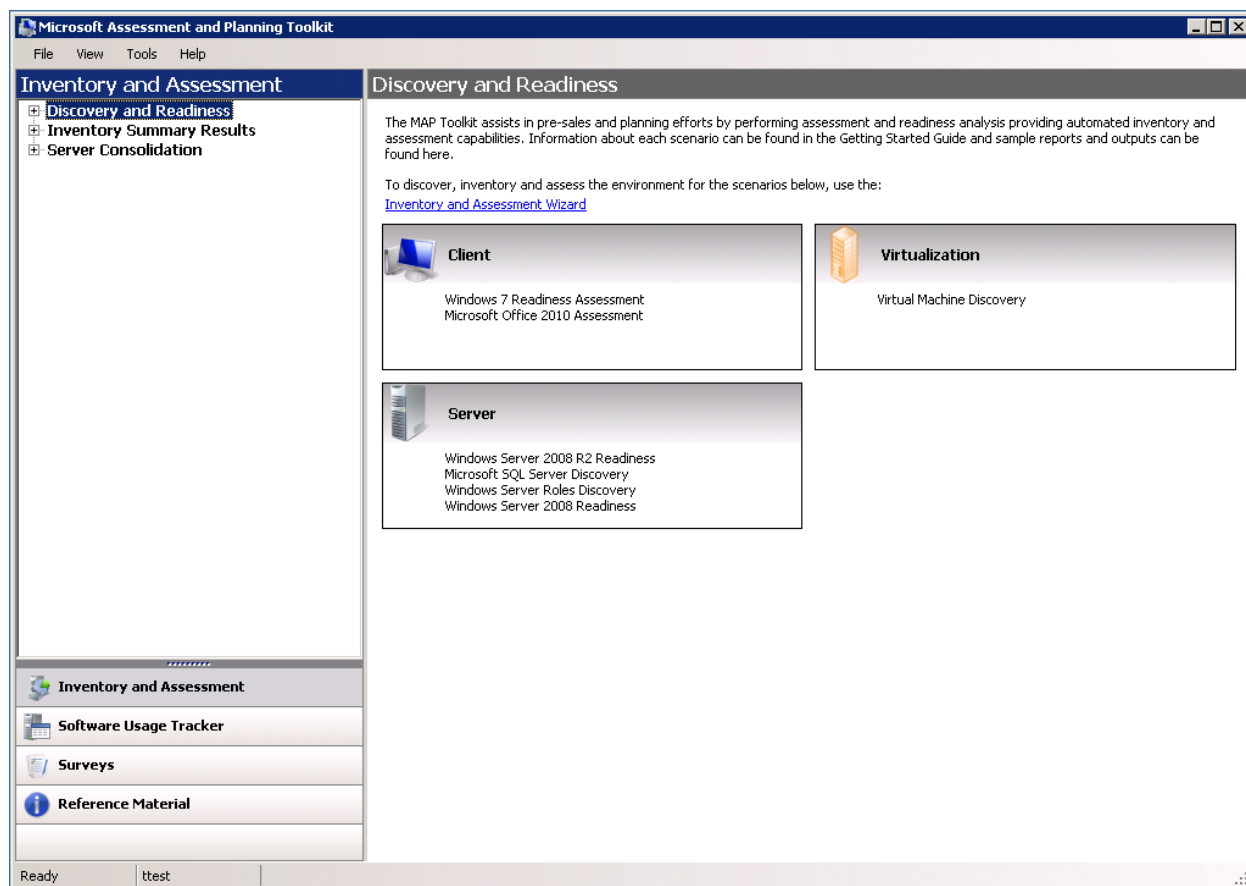
- a. On the **All Computers Credentials** page, click **Create** to create the accounts that the Inventory and Assessment Wizard uses to complete the inventory process for the collector technologies (WMI, SQL Server, and so on) that you need to use, as specified in Step 5.
  - b. In the **Account Entry** dialog box, in the **Credential** section, fill in the appropriate boxes to create a new account. In the **Collector Technology** section, select the check boxes that correspond to the technologies to which this account applies, and then click **Save** to save this account, or click **Save and New** if you need to create additional accounts.
9. Sequence the credentials. For each technology, the Inventory and Assessment Wizard will try the credentials in the order that they appear in the list. To sequence credentials, in the left column, click **Credentials Order**.
  10. Review the summary of your credential choices. The **Summary Review** page verifies that all selected scenarios have credentials listed for the appropriate collector technologies. This page also provides information to verify that at least one discovery method was chosen for identifying computers. Review the summary to ensure that you have typed all of your settings correctly.
  11. Click **Finish** to start the inventory process.
  12. Create a database when prompted to do so.

Once the inventory process has completed, you can use the inventory reports as desired.



## Next steps

After completing your computer inventory, you can perform several different tasks as desired in the **Discovery and Readiness** node of the **Inventory and Assessment** section of the MAP Toolkit. The following illustration displays this node and section of the MAP Toolkit.



After completing the inventory process, you can use this part of the MAP Toolkit to accomplish the following tasks:

- Determine your infrastructure's readiness for Windows 7, Office 2010, and Windows Server 2008 R2.
- Assess and identify all computers running Windows Server operating systems in your environment.
- Assess and identify all computers running virtual technologies in your environment.
- Discover and report on all computers running Microsoft VMware and Linux platforms, including LAMP application stacks in your environment.
- Assess and identify all computers with out-of-date or without security-based software (antispysware, antivirus, and firewall products) in your environment.
- Discover and report on all computers that are virtual machine candidates.
- Assess and inventory SQL Server instances, databases, and components in your environment.
- Assess and identify power usage for each surveyed computer in order to save energy, reduce power consumption, and reduce the cost of providing IT services.