

The Surefire Precision Infusion System Directs Therapy to the Target

Optimal Pressure

Harnesses infusion pressure to create flow within the tumor, overcoming barriers to therapy delivery.

68% increase in tumor uptake¹

Natural Flow

Allows antegrade flow with unique non-occlusive expandable tip.

Maintains >80% of antegrade flow⁴

Self-Centering Accuracy

Expands atraumatically to the vessel wall, providing controlled, even therapeutic agent delivery.

More homogenous downstream particle distribution²

Unparalleled Protection

Provides superior anti-reflux capabilities to protect healthy tissue and compromised vessels.

58% reduction in non-target embolization¹

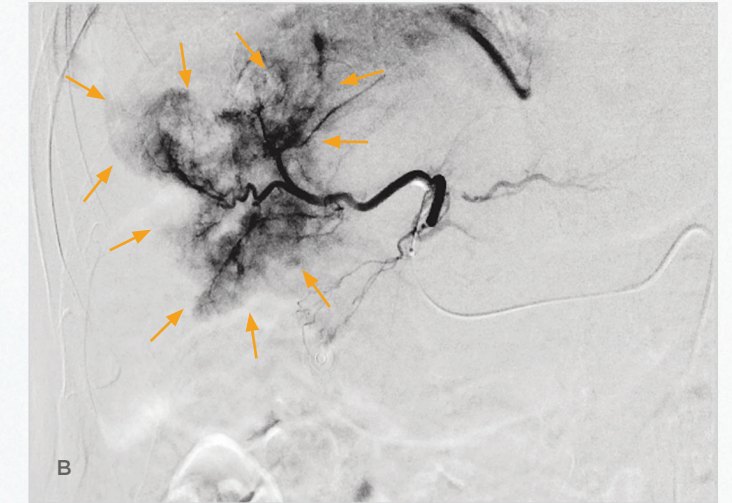


Delivery System Matters



End-Hole Catheter

Left hepatic angiogram with standard end-hole microcatheter.

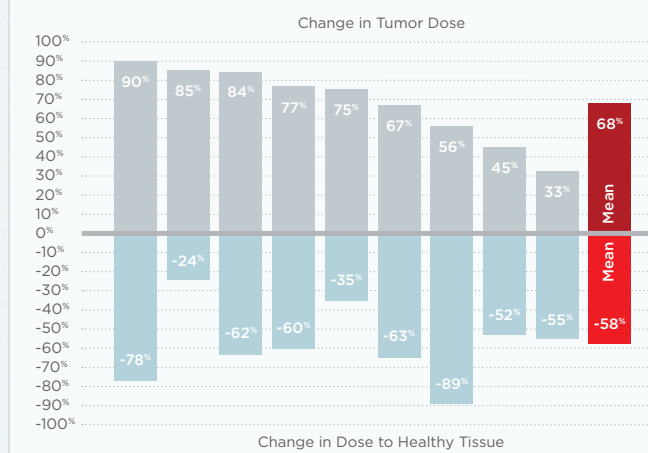


Surefire Infusion System

Left hepatic angiogram with Surefire Infusion System shows greater tumor enhancement (yellow arrows) and reduced non-target delivery.

Overcome Barriers to Therapy Delivery

68% Surefire increases tumor coverage compared to a microcatheter by a mean of 68%. (p<0.05)

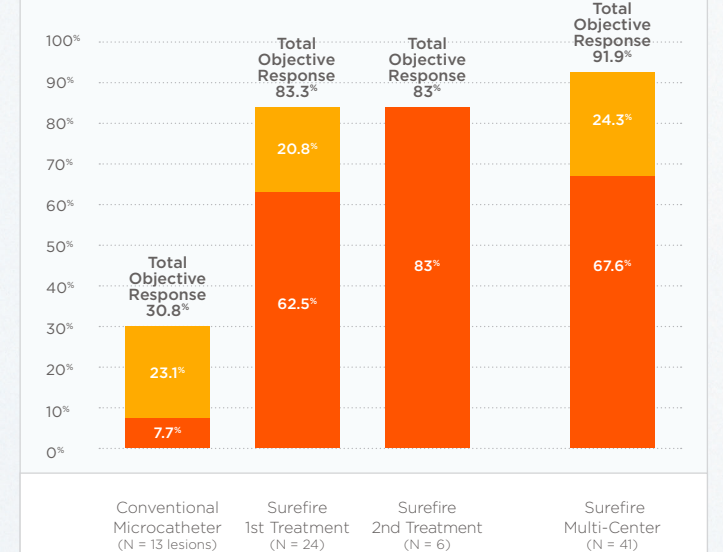


58% Surefire reduces dose delivered to healthy tissue by a mean of 58% compared to a microcatheter. (p<0.05)

In a randomized study, Surefire increases dose penetration into the tumor while simultaneously reducing non-target embolization.¹

Response Rates (mRECIST)

- Partial Response
- Complete Response



In a retrospective series, DEB-TACE with Surefire obtains 83% Objective Response in HCC.³ In multi-center retrospective registry data, DEB-TACE with Surefire achieves 92% Objective Response.⁵



Ordering Information

Product Name	Ordering Code	Inner Diameter	Vessel Size	Usable Length	Proximal OD/ Distal Tip OD
Precision 021	SPS-21120-35	0.021"	1.5 - 3.5mm	120cm	3.2F / 2.8F
Precision 021	SPS-21150-35	0.021"	1.5 - 3.5mm	150cm	3.2F / 2.8F
Precision 025M	SPS-25120-40	0.025"	2.0 - 4.0mm	120cm	3.7F / 3.4F
Precision 025M NEW	SPS-25150-40	0.025"	2.0 - 4.0mm	150cm	3.7F / 3.4F
Precision 025L	SPS-25120-60	0.025"	4.0 - 6.0mm	120cm	3.7F / 3.4F
Precision 025L NEW	SPS-25150-60	0.025"	4.0 - 6.0mm	150cm	3.7F / 3.4F

References

- 1: A. Pasciak, et al. "The Impact of an Antireflux Catheter on Target Volume Particle Distribution in Liver-Directed Embolotherapy: A Pilot Study", *J Vasc Interv Radiol* 2015; 26:660-669.
 - 2: A. van den Hoven, et al. "Innovation in Catheter Design for Intra-Arterial Liver Cancer Treatment Results in Favorable Particle-Fluid Dynamics", *J Exp Clin Cancer Res* 2015; 34:74.
 - 3: A. Kim, et al. "Single Center Experience with the Surefire Infusion System for Delivery of DEB-TACE in Treatment of HCC", presented at the 2016 Society of Interventional Radiologist Scientific Meeting, Vancouver, Canada.
 - 4: Data on file at Surefire Medical, Inc.
 - 5: J. Titano, et al. "Transarterial chemoembolization utilizing an expandable-tip antireflux microcatheter: a multi-institution study of safety, feasibility, and early outcomes", Abstract ID 70503, presented at the CIRSE 2016 Congress.
- A&B** Images Courtesy of Joseph P. Gerding, MD, Maine Medical Center, Portland, ME.



www.surefiremedical.com
6272 W. 91st Ave. Westminster, CO 80031

Email info@surefiremedical.com
Toll Free (888) 321 5212
Office +1 (303) 426 1222
Fax +1 (303) 426 1223

Surefire Medical invents the future for cancer care with advanced treatment technology.

Surefire Medical, Inc. develops, manufactures and markets targeted delivery devices for the Interventional Oncology markets. Surefire's core technology consists of a microcatheter with a unique expandable tip that improves tumor uptake while protecting healthy tissue. It enables physicians to target tumors with superior accuracy, control and protection.

Directed Therapy Through Dynamic Technology

Optimal Pressure • Self-Centering Accuracy
Natural Flow • Unparalleled Protection

