

# Interior Design Portfolio



Veronica Roark

<https://www.linkedin.com/in/veronica-roark/>





I am passionate about creating functional and aesthetically pleasing living spaces, and I'm eager to bring my creativity and skills to a dynamic design team. Looking for opportunities to contribute to residential or commercial interior design projects, and grow professionally in the field. Through my internships, I've gained valuable residential design experience, while my academic background has provided me with a strong foundation in commercial design. I'm excited to apply this diverse experience to future projects.

I plan to pursue the NCIDQ certification to enhance my qualifications and professional licensing after gaining work experience.





Artist's Atelier  
2022 (Redone 2024)

4-7



YMCA Center Redesign  
2023

8-10



Office Design  
2024

11-13



Mafia Island Exhibit  
2024

14-16

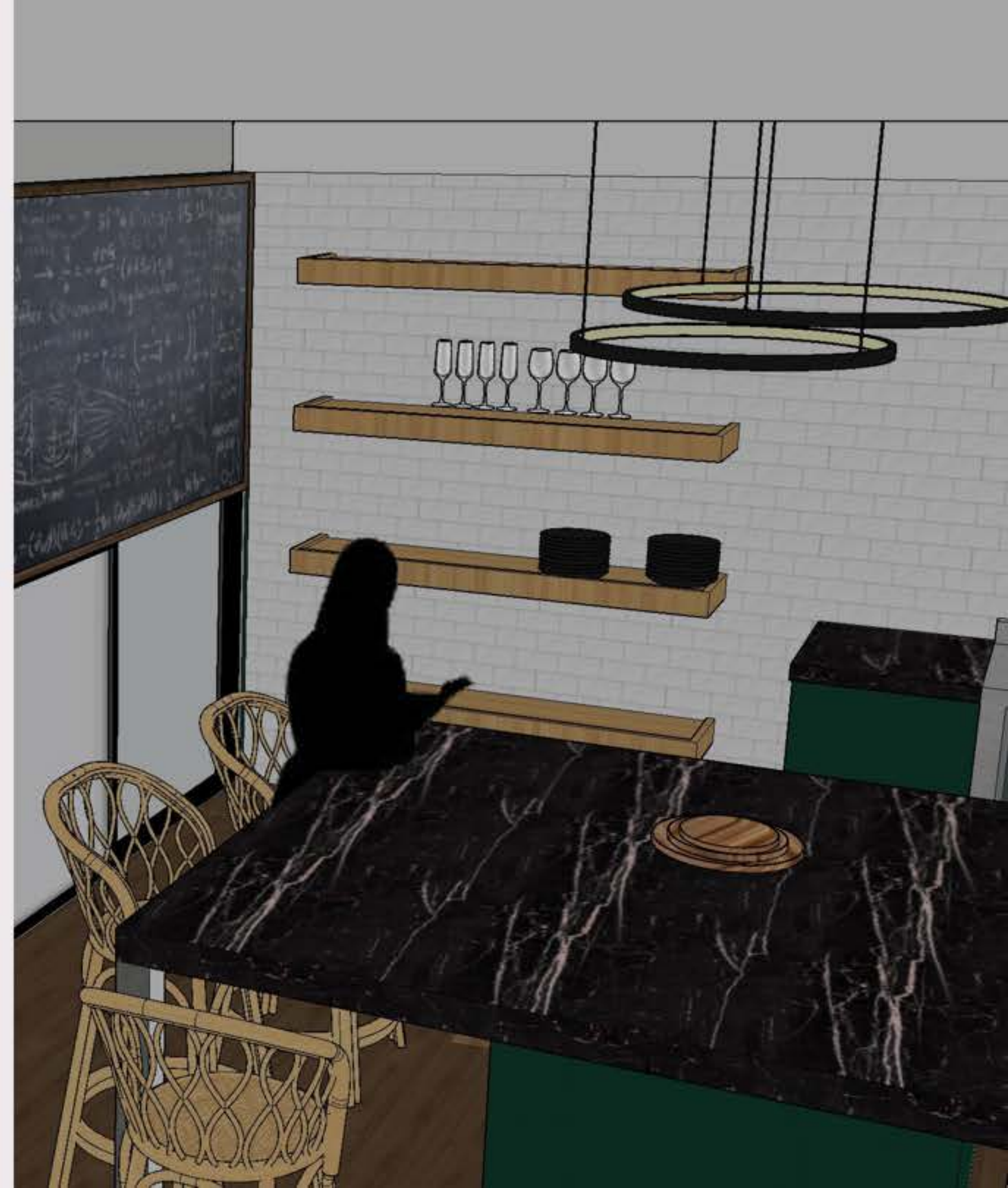


# Artist's Atelier

Originally, I completed this project in 2022, but in 2024 I revisited this project in order to refine the details and display more of my residential design style.

The premise of this project was to create an atelier for an artist, a place for them to live, work, and display their art in a small 24x24' space, with a second floor less than half of that size. My artist was a street photographer, who needed space to display her work and edit photos with computers and software.

I chose to make the living space also the gallery, with plenty of wall space and storage below the staircase. Then, on a raised platform in the middle of the staircase I created a desk space that also features an area below that can be used for storage and can be accessed through a sliding door on the side facing the kitchen.





In the original design, I used green, black, and white as my main colors throughout the space. As for texture and material, I had not quite learned how to apply materials to renderings, but I did add subway tiles in the kitchen and wooden shelves and accents on the first floor.

When revisiting this project, I wanted to refine my final renderings and apply more texture in material. I also changed up some design decisions that made a better use of the space.





# Comparison of Floor Plans



Left- Original 2022 floor plan and cross section

Right- New 2024 floor plan and cross section







When revisiting the project, renderings and cohesiveness were my main focus. My original renders were flat and unrealistic, making them harder to understand. Two years later, I have developed my skills with rendering software that allowed me to make better versions with revit and enscape, rather than just sketchup. In regards to design changes, I removed the sliding door to the storage and provided access to that space through a door underneath the stairs.







# YMCA Center Redesign

In collaboration with the Blacksburg YMCA, we were tasked with the redesign of the YMCA donation center on Main Street.

We were tasked with remodeling the entrance to the thrift store, providing private, semi-private, and public meeting spaces, creating a commercial kitchen for education and their food truck service, and identifying significant open space for storage.

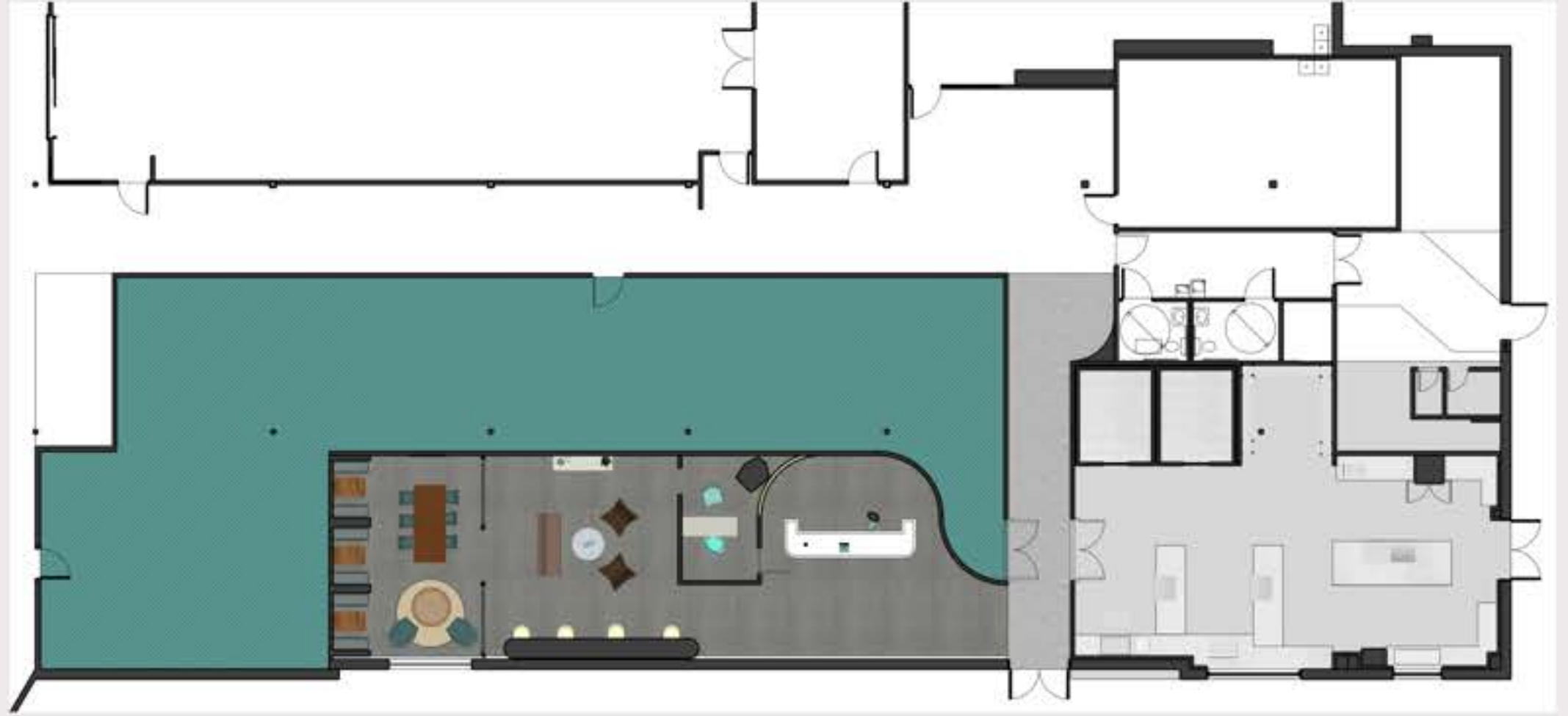
This project was completed in groups of three. My main points of focus for this project were the design concept, color scheme implementation, materials, and general model rendering throughout the space.



In terms of color and material, we wanted to create a space that was comfortable and natural.

We chose materials that were easy to clean, especially in the kitchen. Natural wood tables were used in the public spaces to ground occupants and provide more natural elements in such an urbanized space. Couches and chairs were upholstered with soft, but resilient, fabrics to make the space more welcoming and relaxing.

In regards to color, we took inspiration from the YMCA's color scheme, and natural colors of the Huckleberry Trail, a local trail in Blacksburg.







STEELCASE  
COALESCELAST  
MINUTE STOOL



THOS MOSER  
STUDIO SOFA- THREE  
PLACE



1ST DIBS  
GIO PONTI LOW TABLE  
MANUFACTURED BY GIORDANO  
CHIESA WITH EXPERTISE, MILANO  
1956



RIVERHOOD  
BROWN LEATHER  
BUTTERFLY CHAIR



AERI OLIVE GREEN  
LOUNGE CHAIR



STEELCASE  
TURNSTONE  
SHORTCUT X BASE



AVANTCO X 49R HC  
REACH-IN REFRIGERATOR  
54" W X 32 1/2" D X 80 1/2" H  
STAINLESS STEEL AND ALUMINUM  
CAPACITY 913 CU FT  
SOLID DOUBLE DOOR



ANDERKOLLER 0008077 FBSC  
INDOOR WALK-IN COOLER  
8' X 10' X 7' 7"  
QUICK SHIP  
ALUMINUM FLOOR  
TOP MOUNTED REFRIGERATION



ANDERKOLLER 0008077 FBSC  
INDOOR WALK-IN FREEZER  
8' X 10' X 7' 7"  
QUICK SHIP  
ALUMINUM FLOOR  
TOP MOUNTED REFRIGERATION



VULCAN 72HC BR29C  
ENDURANCE 72"  
8 BURNER NATURAL GAS RANGE  
24" ANNUAL GRIDDLE  
CONVECTION OVEN  
REFRIGERATED BASE





# Workplace Design

For this project, we were told to select a brand or company to create an office space for. We were provided with a building in downtown Roanoke, Virginia, with limited sun exposure, and the ability to change the size and shape of the second floor.

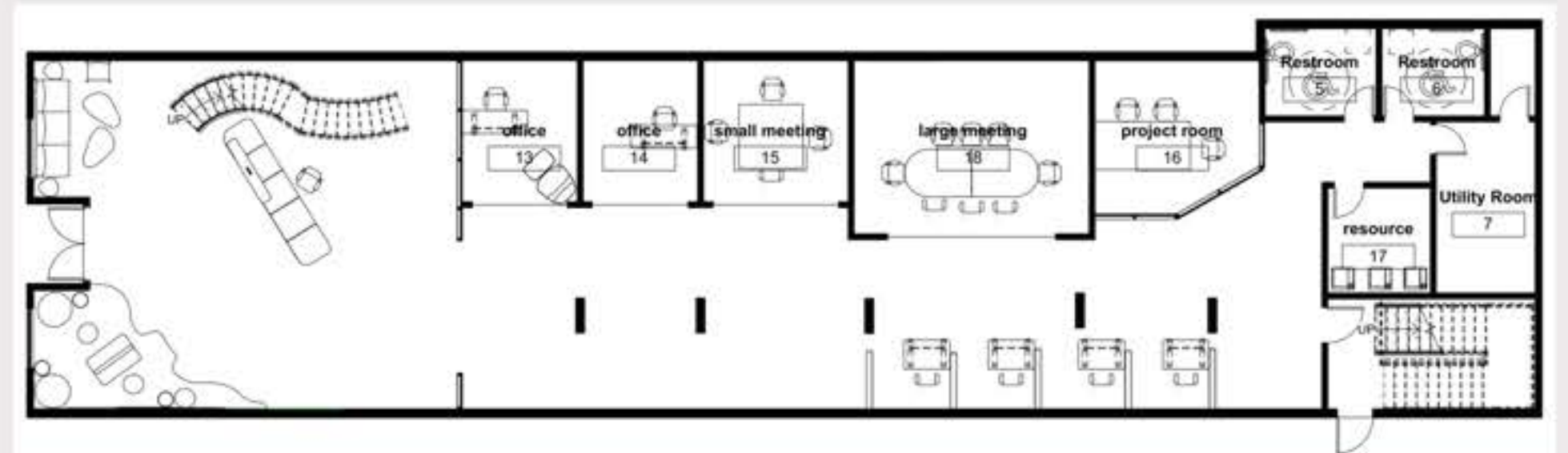
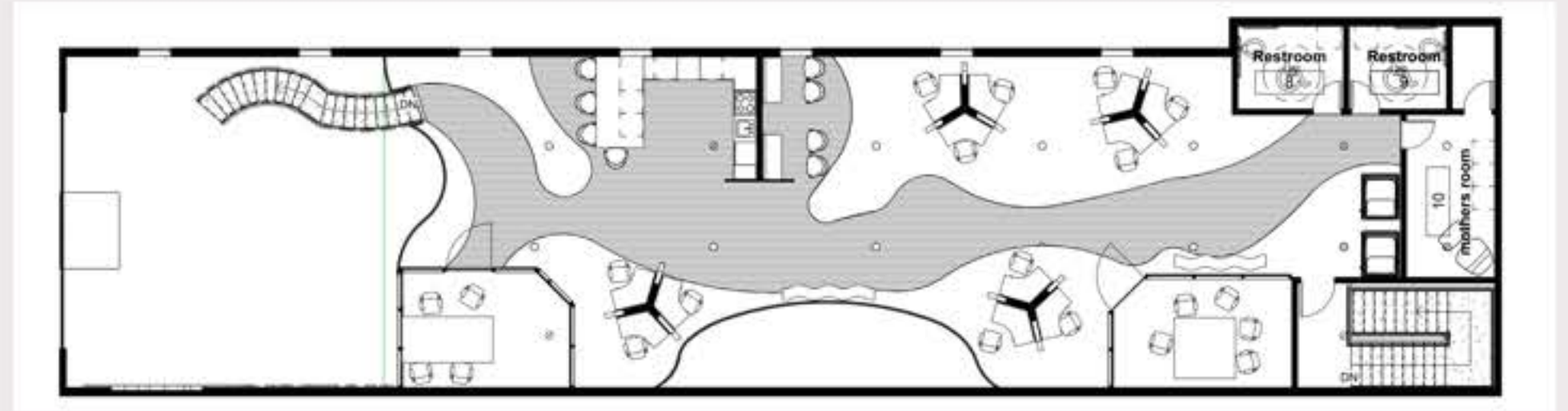
I chose a brand called Mrs. Wordsmith, a children's educational game company. To make the office space resemble the playfulness of their products, I included decals of the company's characters, and a large acoustic panel tree, to provide a cartoony, lighthearted aspect to a structured office.

On the second level, I created a wood floor trail in between sections of green "grass" carpet. For desk separation, I created cork "bushes" to emphasize the cartoony outdoor setting I created with the flooring and tree in the entrance.





On the second floor, meeting rooms were built to represent greenhouses, all connected with the wood trail. There is also a reflecting pool with a clear bottom on the second floor, to amplify the light from the windows on the roof, and bring the light down to the first floor.











# Mafia Island Museum Exhibit

For this project, I was provided with information about a group of islands off the coast of Africa. We were tasked to create a museum exhibit based on some part of the island's local history or biology. I chose to focus on the maritime and nautical aspects of the island's economy, and its effects on the reefs and surrounding ecosystems.

For the exterior of the space, I wanted to create separate buildings with a covered trail connecting them in the shape of a nautilus shell. These buildings create a central outdoor space for children to play, and friends to meet while surrounded by local history.





# Mafia Island Exhibit



For the interiors of the exhibit rooms, I wanted to include natural materials to provide a greater sense of connection to nature, and natural curves to further mimic a nautilus shell. Some of the rooms were built for physical exhibition of artifacts and displays, while a central room was equipped with LED panels that display videos on the shipping industry's impact on marine life.



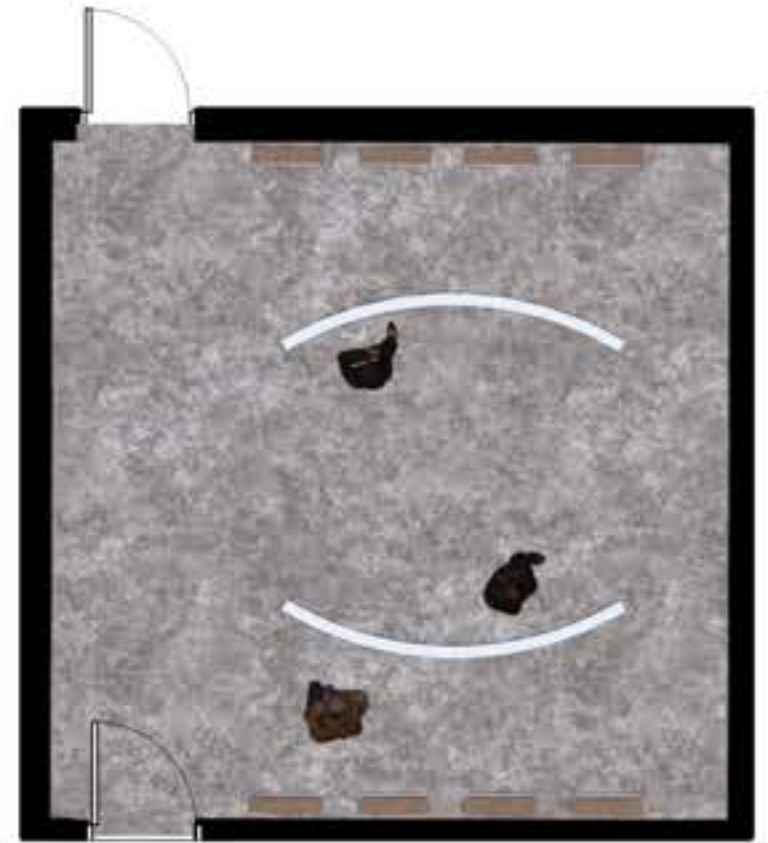




LEVEL 1  
1/4" = 1' - 0"

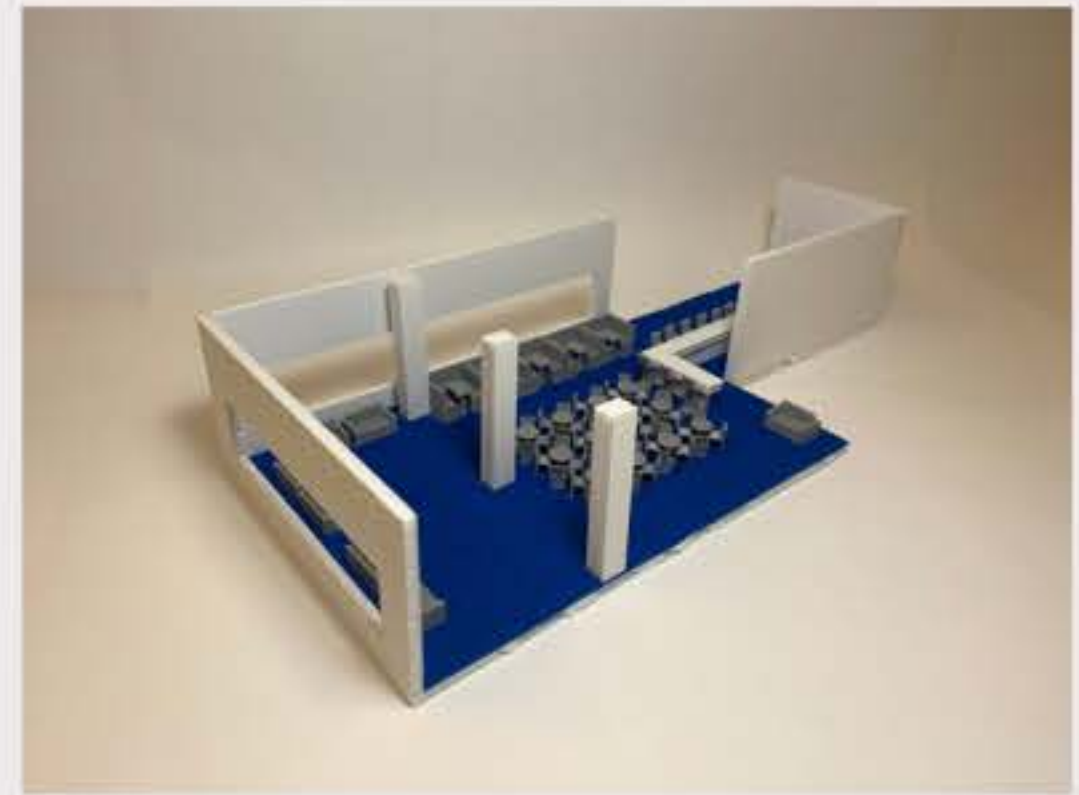


LEVEL 1  
1/4" = 1' - 0"




LEVEL 1  
1/4" = 1' - 0"





 <https://www.linkedin.com/in/veronica-roark/>

 veronicasroark@gmail.com