



Brockenhurst College



International Prospectus 2015/16

**BROCK100**  
100 years of education excellence



Brock is not just a place to study; it is a place to have new experiences, to make new friends, to develop new responsibilities and to take new steps in life.

# Welcome from the Principal

Brockenhurst College maintains an excellent academic reputation and is dedicated to providing the highest quality education for all. I believe that the key to our success is our passion for learning and our commitment to each individual student.

03

Welcome



"The success of our students is evidenced as they progress to Higher Education and a range of careers, locally, nationally and internationally. Our students' consistently high pass rate and progression to top universities stands testimony to our academic excellence, and is endorsed by our Ofsted record.

Our dedicated academic staff offer keen expertise and in-depth understanding of their subject areas. They are supported by excellent facilities and trained support staff, who work together to ensure the best results and to prepare students for their next step to university or the workplace.

Brock is not just a place to study; it is a place to have new experiences, to make new friends, to take on new responsibilities and to take new steps in life.

In addition to the wide range of academic courses, Brock offers an extensive choice of opportunities designed to enhance our students' lives. Our enrichment programme includes sports, community service, study trips, work experience and creative arts projects.

I very much hope that you will find the range of courses offered in this Prospectus of interest and that you will be inspired to learn more about what Brock has to offer. I am confident that you will discover a College where excellence is delivered within a friendly, inclusive and stimulating environment and everyone is encouraged and enabled to fulfil their potential and realise their ambitions."

*Di Roberts CBE, Principal*



"'Brock', as we tend to refer to the College, has a long history of welcoming international students. We currently have around 150 students from all around the world, so you will be certain to receive a truly international education and a diverse student experience.

We understand that leaving home, possibly for the first time, and moving to an unfamiliar culture can be exciting but challenging. We are committed to supporting you throughout your journey with us.

I hope you choose Brockenhurst College, one of the most prestigious colleges in the UK, to continue your educational journey and prepare you for your chosen career. We look forward to hearing from you and helping you with any questions you may have."

*Lina Soura, International Manager*

# Contents

04



## Introduction

06-07	Brock's Heritage, 'Outstanding' Quality & Choice
08-09	Passport to Success
10-11	Location, Campus & Facilities
12-15	Homestay Accommodation
16-17	Academic Support
18	UK Education System
19	International Curriculum

## Courses

20 -23	English Language & Study Abroad Courses
20	Study Abroad Experience Programme
21	English as a Foreign Language Programme (EFL)
22	Pre-sessional Summer English Language Course
23	School Holiday Courses
24-31	Secondary Programmes

26-27	Pre-A Level Programme
28-29	A Level Programme
30-31	Vocational Programmes
32-41	University Preparation Programmes
36-37	Foundation Diploma in Art & Design
38-39	International Foundation Year in Business & Finance
40-41	International Foundation Year in Science & Engineering
42-43	Higher Education Courses (HNDs)

## Further Information

44-45	Applications, Interviews & Enrolment
46	Fees (inc EEA Student Support Fee), Scholarships & Visas
47	Contact Us

# Brock's Heritage

## 100 years of academic achievement

06

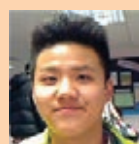


If you decide to join us at Brockenhurst, you will be part of our rich heritage. The College celebrated its centenary in September 2013, and has provided quality education for 100 years. We are immensely proud of our academic success and other achievements throughout the years.

Education has changed a great deal in 100 years, but Brock's ambition remains the same – to enhance our students' lives through learning.

Our commitment to excellence is unwavering. Our aim is to ensure that all students are provided with the best education possible, supported by dedicated teaching staff, excellent facilities and a unique environment where everyone is encouraged and enabled to achieve their goals.

Brock provides international students with a great British experience – you will enjoy a taste of real life in the UK, at work in College, and when socialising with friends.



“Brock is a fantastic place and everybody is friendly here – it’s a beautiful school. I live with a really nice host family; it’s peaceful and I practice a lot of English with them.”

*Jake Xia, China*

# 'Outstanding' Quality and Choice

## A track record of excellence

Brockenhurst is recognised as one of the most successful colleges in the UK.

We have been awarded 'Outstanding' status by the UK government inspectors, Ofsted, for the last 10 years. Our most recent Ofsted report highlighted the enthusiasm, passion and standards of professional practice shown by our teachers, and the support offered to our students.

Our students were noted as being motivated, self-confident and encouraged to have high aspirations. We are also proud to hold the prestigious Beacon College status for excellence and innovation in education.

## New technology

A major project with global industry leader IBM, supported by the University of Southampton, will see Brock able to provide the latest technology, enhancing the way it transfers knowledge and enabling students to learn and study in new ways. 'Cloud' classrooms, lectures streamed from around the world, international connections with subject experts, real-time video conferences and interactive workspaces are just some of the innovative possibilities that will soon be available to our students.



## University Progression

### A smooth transition to your chosen career

You may already have an idea of your chosen career, or you could be keeping your options open a little longer. Whatever you decide, Brockenhurst's experienced and dedicated staff will help you to prepare for the next step – whether it's university or putting your foot on the first rung of the career ladder.

### Range of courses

Brock's range of courses has been designed to ensure that students are offered a diverse choice of subject areas across A level, vocational and other specialist courses for international students.

Our flexible curriculum allows you to select a combination of courses to suit your higher education and career plans – this means that you can enjoy a mixture of subjects that make the most of your talents and enable you to fulfil your ambitions.

Courses are grouped into broad subject areas which allow you to benefit from shared facilities, talks and lectures and other study activities. You'll work with teachers and other students who share your passion for these subjects and you will be encouraged to explore your chosen subject and related areas of interest.

More details about specific courses can be found on our website [www.brock.ac.uk/international](http://www.brock.ac.uk/international)



"Brock provides a really good education; I've learned so much here and it has really developed me. It has always been my dream to study in the UK and improving my English will play a very important role in my future."

*Mi Trinh, Vietnam*

# Passport to Success

08

Here at Brock, you can be assured that our courses and support for international students are well-established.

We have educated students from 65 different countries, providing high quality teaching, state-of-the-art facilities and the academic enrichment that Brock can offer.

Brock is one of the most prestigious colleges in the United Kingdom for the following reasons:

## A genuine British experience

Brockenhurst College attracts high-calibre students locally and internationally. Every year we educate around 3000 full-time students and 8000 part time students. 5% of our full-time students are international, so you will be part of a truly British educational experience.

## Our outstanding results

Our year on year outstanding results place Brock amongst the top UK colleges. Every year our A Level pass rate is 99% which is an outcome of the superb personal support and preparation as well as outstanding facilities and resources that Brock offers. In 2014, we celebrated again the success of Brock students as 50% of our students gained A\*-B grades, with 75% of all students achieving A\*-C grades across all subjects. In addition, nearly 66% of students taking Mathematics, Physics, Chemistry and Biology, valued highly by all universities around the world, gained A\*-B grades.

Here are the 2014 international student results:

- 93% pass rate across all subjects
- 50% A\*-B grades across all subjects
- 70% A\*-C grades across all subjects
- 62% A\*-B grades in A2 STEM subjects (Mathematics, Physics, Chemistry, Biology)
- 82% A\*-C grades in A2 STEM subjects (Mathematics, Physics, Chemistry, Biology)
- 100% pass rate in 12 A2 subjects including Biology, Business Studies, History, Law and Physics

- 100% pass rate in 9 AS subjects including Biology, Further Mathematics, Law and Sociology

Detailed exam results for 2014 can be found at [www.brock.ac.uk/achievements](http://www.brock.ac.uk/achievements)

## Progression to top Universities

The high calibre of our international students is recognised by university admissions tutors, as our graduates progress to top universities in the UK and abroad every year.

- Every year 8-15 students progress to Oxford and Cambridge universities
- Approximately 26% of international students progress to Russell Group Universities, world-renowned for research excellence, including University College London, Imperial College London, the University of Nottingham and the University of Southampton every year.
- International students also progress to specialist universities such as University of the Arts London - Central Saint Martins, London College of Fashion and Ravensbourne.
- Many of our international students gain places at top universities in their home countries including the University of Hong Kong, Peking University, Tsinghua University, Hong Kong Polytechnic University, McGill University Montreal and the University of Sydney.

**Brock hosts students from all over the world; Hong Kong, China, Brazil, Vietnam, Germany, Czech Republic, Thailand, Macau, Slovakia, Chile, Italy, Kenya, Tanzania, Mexico, the Netherlands, South Africa, Spain, South Korea, Taiwan, Australia, Hungary, Greece, Latvia and Lithuania.**



# What could Brock do for you?



**Jonny Liu, now a Brockenhurst College governor, working at Bank of America**  
"After leaving Brock, I studied at Loughborough University and then at the London School of Economics. I now work as a Risk Analyst. Brock gave me a strong academic foundation so I was able to study more effectively and efficiently at university. I explored British culture and met many talented people from different backgrounds. It was a great environment; the teaching quality is outstanding. As a governor, I am pleased to have an active engagement with the College and help shape its future."



**Kenneth Kiu Chun Cheung, from China, graduated to Bath University and is now a pharmacist**  
"My time at Brock may be the most unforgettable experience of my life. I was really nervous when I arrived, but after a week, my worries had gone. Everyone is really friendly and helpful. The best thing about Brock is making friends with other international students and learning about different cultures. I was really impressed by the help from the College with my UCAS application. I would highly recommend that you apply to study at Brock."



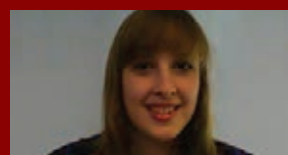
**Margareta Rybarikova from Slovakia, studying Biology, Art and German.**  
"Studying at Brock is amazing; the teachers are lovely and so helpful. I have made friends with lots of other students, both international and UK. The local environment is beautiful; I am surrounded by the forest and nature. Brock is a really good college and I would highly recommend it; you can study what you want, you have all the support you need and you'll never feel alone here. I wish I could stay longer!"



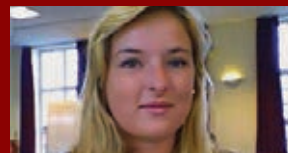
**Rahma Hussein from Tanzania**  
"To live and study at Brock is very peaceful, there are not many distractions, yet there are places to see nearby which you can jump on a train to. The teaching here is great; the teachers have been lovely, they are there to help you with whatever you need. The LRC is full of books that you can take out anytime and there's always space for you to work. The International team are very supportive; if you have a problem you can call or text them and they'll sort it out very fast."

Watch our DVD to find out more about life at Brock:  
[www.brock.ac.uk/international](http://www.brock.ac.uk/international)

**Our UK students love it here too...**



"I love studying at Brock because there is such a diversity of students and it's really interesting seeing different cultures. Everybody gets along and it's just a warm atmosphere."  
Amy Walsh



"It's all about diversity and equality, there are students from so many different walks of life and everyone's really welcoming."  
Polly Turner-Ward

# Location, Campus and Facilities

10

If you choose to study here, you will benefit from the safe and harmonious surroundings of the New Forest while the South Coast's beautiful beaches, vibrant shops and social scene – and London – are all within easy reach.

## Location

Brock's location is truly unique. Our 27 acre campus is set within the beautiful New Forest National Park on the South Coast of England.

The New Forest is more than 900 years old and consists of woods and heathland where ponies and cattle roam freely. The traditions and history of the New Forest make it a unique place to live, and the stunning scenery offers a friendly, safe and creative environment for study and leisure activities. Brockenhurst itself is a peaceful and picturesque village, with a small collection of local shops and cafés.

Despite its rural location, Brockenhurst College is just 90 minutes from both London and Oxford by train, and fifteen minutes from the university city of Southampton, which has one of the largest shopping centres in the region.

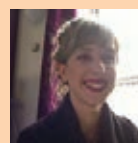
Just fifteen minutes in the opposite direction is the cosmopolitan seaside town of Bournemouth, which has seven miles of golden beaches, an array of shops and restaurants and a vibrant nightlife. The beautiful holiday resort of the Isle of Wight is just a ferry ride away.



## Facilities on campus

Our beautiful campus offers a range of excellent facilities, which are regularly reviewed and updated to ensure we provide students with the most relevant equipment within specialist teaching areas:

- The Learning Resources Centre (LRC) provides a spacious environment for research and study with helpful, trained staff. There are specialist books, magazines and DVDs covering all subject areas, together with copiers, printers, PCs, quiet areas and group study rooms.
- The Hard Brock Café offers a varied menu for meals and snacks throughout the day and a great social space to meet friends. There's also an Internet Café and plenty of outdoor areas to meet, study and relax.



"Brock was recommended to me, so I knew it was going to be great. The New Forest is beautiful; I am surrounded by the forest and nature."

*Margareta Rybarikova, Slovakia*

- Our Sports Centre is available to all students and offers a gym and sports hall for indoor sports, outdoor tennis, basketball and netball courts, and floodlit all-weather pitches for football, hockey and rugby. A range of watersports are offered at our outdoor centre, located on a beautiful nearby harbour.
- The campus has its own theatre, together with dance studio and rehearsal rooms for music and performing arts.
- The Beacon Technology Centre is a £3.5million state-of-the-art technology, media and photography hub, housing the latest IT facilities plus a TV and radio recording studio.
- Industry-standard kitchens have an adjoining working restaurant and bar area open to the public for hospitality and catering training.

More details about our campus and facilities can be found on [www.brock.ac.uk/campus](http://www.brock.ac.uk/campus)

## Travel and transport

If you come to live in the New Forest, getting to College is very straightforward with excellent transport links. We try to ensure that all host family homes are near to public transport routes. Brockenhurst railway station is just a 5 minute walk away, and we have a College bus network that drops you off on the campus.

London, Southampton and Bournemouth all have international airports, and cross-Channel ferries run from Southampton, Poole and Portsmouth to Europe.

Our Travel Team can offer specific help and advice through the summer months in advance of the start of term, and our dedicated Travel Co-ordinator is on hand to help students with any travel problems on a daily basis throughout each term.



# Homestay Accommodation

12

Brockenhurst College prides itself on providing a truly British experience and our Homestay Accommodation programme is one of the reasons. Living with a host family is one of the best ways to enjoy British culture and lifestyle.

## A safe and comfortable home from home

Homestay accommodation is organised by the College for the duration of your time here. You will live with a local British family near to the College and gain a real insight into life in the UK. All of our host families are carefully selected and regularly inspected by a designated member of the International Department.

## Homestay accommodation provides:

- An English-speaking cultural environment.
- A private furnished room for each student.
- Accommodation within 30 minutes travel to the College.
- Internet access.
- Two meals per day during weekdays, three meals per day during weekend, holidays and non-term time.
- Laundry (once or twice a week).
- No additional living costs.
- Travel pass, if applicable.



## Learn English, make friends and have a truly British experience

Before you even enrol, you will have the opportunity to make friends. You will be treated as a member of the family during your stay, and therefore get a proper insight into British daily habits and customs. You will have the opportunity to socialise in English on a daily basis so you can improve your language and communication skills. Students who have lived with a host family have usually managed to achieve the excellent English language results which are required by top universities.

Your host family will include you in their daily activities - this can simply be watching TV together, but can also include family trips and social experiences. Past students have developed friendships with their hosts which still continue today.

## Safety and support

Your host family will provide you with advice about keeping healthy and safe during your time at Brock, whilst also allowing you to gradually become more independent - a very safe, supported transition to living abroad. If you have an emergency, you will be able to call them at any time for support. There is also a 24 hour College contact in case of emergencies.

Your host family will ensure you are doing well at College and can provide reassurance to your family back home that you are in safe hands.







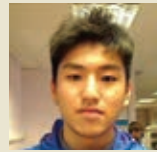
For more information visit [www.brock.ac.uk/international](http://www.brock.ac.uk/international)

Homestay accommodation gives you an **authentic** English **experience** and an opportunity to develop your **language** and communication skills



"I would like to thank Rocco's host family, Debbie and Kevin, who have been very kind and with whom he has developed a close relationship. Rocco has had a very valuable experience at Brockenhurst College; he has told me how kind and helpful the teachers and staff in the International Office have been."

Rossana Chan, mother of Rocco Cheung



"There are so many benefits to living with a host family; you learn to communicate really well and they tell you about the typical English lifestyle. I think English people, especially my host family, are so enthusiastic; whenever you need them they help immediately and give me their full support."

Jacky Li, China

"When my international students first come to stay, I make sure they quickly get used to the British way of life. That includes getting to know how to use the public transport system. Very quickly, they are not only catching the bus to College, but travelling around the country on trains and coaches, just like other British students."

Sue Buck, Hordle Host Family



"Hosting international students is a really rewarding experience. It's been great to see them settle into our family life, try food such as fish and chips, roast dinners and toad-in-the-hole (okay, this meal took some convincing!) and generally grow more confident in speaking English. Our younger boy has been fascinated by the new person in his midst and has even tried his hand at learning to count in Chinese."

Julie Greer, New Milton Host Family



My host family are really lovely; they cook good food and chat with you every day. We often go cycling, walking the dog or my friends come to visit and we have tea or watch a movie."

Christine Lieu, Hong Kong



"Staying with a host family is a good experience and you get to see how local British people live, their culture and life habits."

Charles Ip, Hong Kong

# Academic Support

16

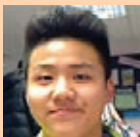
Brock's teaching staff offer the experience, skills and understanding to help you achieve your best.

## Maximise your potential

All courses at Brockenhurst are taught by specialist, qualified staff who have an in-depth knowledge of exam board requirements, as well as the relevant professional experience to enhance their teaching skills.

They aim not just to teach but to bring out a real understanding of specific areas and a motivation to excel in all their students.

Brock encourages students to attend Higher Education events which are held at the College and around the UK. We also arrange for around 60 universities to come to the College each year so that you can research the huge number of choices available to you. Staff will discuss the choices on an individual basis and will help you with the UCAS application process.



"In some Asian countries, classes can be quite pressurised, but teachers here are different. They are very friendly and love to help me, as do my classmates."

*Jake Xia, China*



## We offer a range of dedicated support to all international students:

### International Tutorial Programme

When you arrive at Brock, you will be given a full induction to help you settle into the College and life in the UK. You will have timetabled international tutorials on a regular basis where you will be able to speak to a member of staff who provides pastoral and welfare advice and support.

### English Language Classes

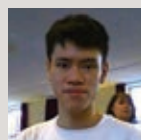
You will have English classes included in your timetable. All top universities in the UK and abroad specify the attainment of an advanced level of English and so we offer specific support for English exam preparation, such as IELTS and TOEFL.

### Personal Tutor

You will have a Personal Tutor who will get to know you and can offer individual support, as well as regular academic reviews and progress reports. If you have any concerns about your studies, they will discuss this with you and offer advice.

### Progress Manager

You will also have a Progress Manager who will monitor your progress, attendance and overall performance. If you have any concerns or are considering changing your subject choices or programme, they will offer you specific advice linked to your post-College progression plans.



International Student of the Year 2013, Jack Lam, studied the fast-track A level programme. He set himself very high standards, aiming to progress to the University of Oxford or a top university in Hong Kong. Jack completed four A levels, proving that with perseverance, you can achieve your dreams.



### Specialist University and Careers Guidance

You will be offered guidance for applying to universities in the UK, including Oxford and Cambridge, and making visits to universities around the UK. There will be the opportunity to attend a Higher Education Fair here on campus. We also provide excellent careers support, advice and one-to-one sessions as part of our Next Steps programme.

### Gifted and Talented Programme

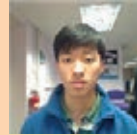
This programme provides enhanced support and guidance for high-achieving students, to prepare their applications to the UK's top five universities (including Oxford and Cambridge).

### Student Services

Our Student Services team is available to all students, from before you enrol on your studies here and right the way through your time at Brock. The team is experienced, helpful and friendly, and your questions or concerns will always be treated with respect and confidentiality.

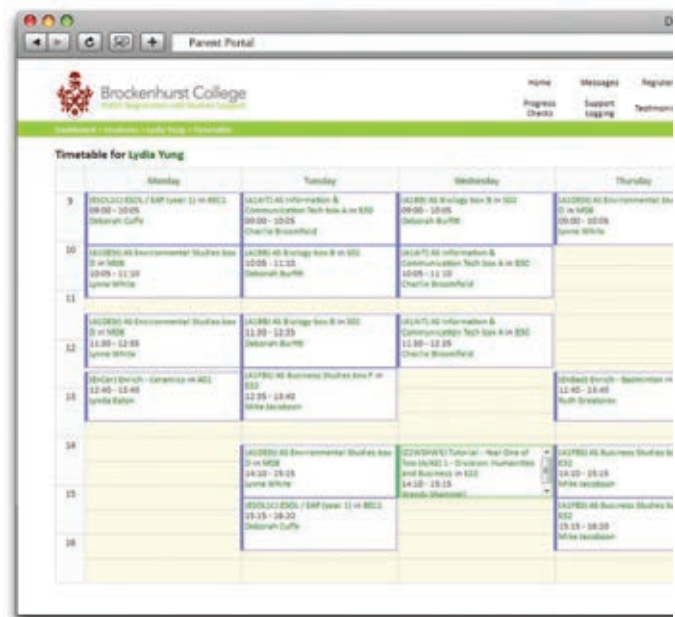
### Parental Support

The College has an excellent dedicated Parent Portal webpage which provides live details about all aspects of your study programme. Attendance and progress reports are made available and tutors may be contacted at any time.



“The teachers are so nice, and even when my English hasn’t been good, and I have lots of questions, they are so patient with me and explain everything.”

*Lincoln Yuen, Hong Kong.*



# UK Education System

18

An overview of the British education system

Ages	Stages	Exams	
3 – 5	Pre-school / Nursery	–	Primary
5 – 7	Key Stage 1 Year 1 – 2	National Tests	
7 – 11	Key Stage 2 Year 3 – 6	National Tests	
11 – 14	Key Stage 3 Year 7 – 9	National Tests	Secondary
14 – 16	Key Stage 4 Year 10 – 11	GCSEs Level 2 Qualifications Vocational Qualifications	
16 – 18	Key Stage 5 Year 12 – 13	AS/A Levels Level 3 Qualifications Vocational Qualifications Foundation Year	
18+	Level 4 – 6	Higher National Diploma Undergraduate Degrees	HE
21+	Level 7 – 8	Postgraduate Degrees Doctoral Degrees	

# International Curriculum

Brockenhurst College is proud to offer an excellent range of courses to its international students. You can study subjects at many different levels, depending on the grades you achieve at school, your preferred method of study and your plans for Higher Education, employment or further training after completing College.

**All EU and EEA countries including Switzerland are eligible for a tuition fee waiver, but subject to a Student Support Fee (see page 46 for more details):**

Austria, Belgium, Bulgaria, Croatia, Republic of Cyprus, Czech Republic, Denmark, Estonia, Finland, France, Germany, Greece, Hungary, Iceland, Ireland, Italy, Latvia, Liechtenstein, Lithuania, Luxembourg, Malta, Netherlands, Norway, Poland, Portugal, Romania, Slovenia, Slovakia, Spain, Sweden, Switzerland and the UK.

## English Language & Study Abroad Courses

These are intensive courses that will help you improve your English and academic study skills. They are designed for students who wish to progress to a further programme to improve their fluency in English to meet work requirements, or for those just wanting to experience UK lifestyle and interact in an English-speaking environment.

- Study Abroad Experience Programme page 20
- English as a Foreign Language (EFL) Programme page 21
- Pre-sessional Summer English Language Course page 22
- School Holiday Courses page 23

## Secondary Programmes

Secondary Programmes offer you the opportunity to receive high quality secondary education within the UK education system to build a good foundation of knowledge before progressing to more advanced study.

- Pre-A Level page 26-27
- A Level pages 28-29
- Vocational Programmes pages 30-31

## University Preparation Programmes

If you are aiming to go on to study at university, Brock's University Preparation Programmes are carefully designed to provide you with comprehensive, subject-specific and language knowledge for entrance to one of our partner universities or any other top UK or international university.

- Foundation Diploma in Art & Design pages 36-37
- International Foundation Year pages 38-41

## Higher Education Programmes

Higher Education Programmes offer you a comprehensive and supportive high level learning experience at the College. They are structured to focus on practical learning and experience, offering you the skills and knowledge to pursue a specific career.

- Pages 42-43



# English Language and Study Abroad Courses

20 We offer a range of shorter intensive courses for international students to help develop your language and study skills and introduce you to British culture.

They will prepare you either to study one of our International Curriculum courses here at Brock or elsewhere, or simply to achieve a higher level of fluency in the English language while experiencing UK lifestyle and its education system.

## Study Abroad Experience Programme

### About the course

The Study Abroad Experience Programme offers you an exciting opportunity to experience first-hand our excellent quality teaching and learning. Our A level programme is internationally renowned for its outstanding results. This tailor-made programme offers you the opportunity of a flexible, short-stay study experience (8-30 weeks). It provides a varied timetable of subjects, including English as a Foreign Language, and you will be able to meet and study with local students and participate in a number of activities.

You will study up to five modules, including English as a Foreign Language, as well as benefit from our Enrichment programme; there will be some compulsory, core and optional modules available.



“I had a quality cultural experience on the Study Abroad Programme at Brock. The multicultural environment certainly made me more open minded and I became interested in the possibility of a socially conscious job. I have decided to participate in a German Red Cross project in India; I’m going to be an assistant English teacher at a school in Pune.”

*Lukas Fehrmann  
completed the Study Abroad  
Programme in 2013.*

### Course overview

Whether you wish to take an academic course of study, improve your professional prospects or simply study for pleasure, you are sure to have a memorable and rewarding experience at Brock.

Age	15 – 19
Course Duration	1 week – 7 months
Hours per week	15 – 20
Entry Requirements	Entry is by interview. We normally expect: – Good track record of academic study. – Good conversational level of English.
Start Date	September 2015 or January 2016
Qualifications Gained	Brockenhurst College attendance certificate

Duration	Tuition Fee Only	Tuition & Accommodation	Dates
Autumn term	£3,200	£6,200	Sep 2015 – Dec 2015
Winter Study Abroad	£4,300	£8,700	Sep 2015 – Feb 2016 half term
Spring Term	£2,800	£5,400	Jan 2016 – Easter 2016
Autumn & Spring Term	£5,000	£10,300	Sep 2015 – Easter 2016

## English as a Foreign Language (EFL) Programme

### About the course

This flexible programme allows learners whose first language is not English to develop their use of the English Language and improve their communication ability. You are encouraged to study General English as well as to enhance your academic study skills to broaden your wider subject knowledge by employing a variety of methods, techniques and topics.

The programme aims to help you develop your fluency and accuracy in reading, listening, speaking and writing skills while focusing on the advancement of your pronunciation, grammar and vocabulary.

Your programme will be supplemented by your specialist subject study which will enhance your learning experience and equip you for further progression following completion of your EFL Programme. Alongside your studies, you will be eligible to take part in the College's Enrichment programme, with a wide variety of sports, arts, music and voluntary opportunities.

### Course overview

	Duration	Fee
Tuition Fee	Autumn Term	£3,000
	Spring Term	£2,500
	Summer Term	£2,220
	3 Terms	£7,350
*International students are also offered the opportunity to join the EFL Programme for shorter periods at any point: Tuition fee is £200/week.		



Age	16+
Course Duration	1 – 3 terms
Start Date	Sept 2015, Jan 2016, Apr 2016
Hours per week	<ul style="list-style-type: none"> <li>– 20 hours per week of English language and study skills support specifically designed for international students</li> <li>– Approximately 3 hours per week GCSE or A level subject study</li> <li>– Unlimited Enrichment programme options</li> </ul>
Academic Requirements	Entry is by interview. Whilst there are no specific academic requirements for this course, applicants are expected to provide their past two years of academic transcripts.
English Language Requirement	IELTS 4.0 overall (with no band below 4.0) or equivalent UKVI approved English Language certificate
Assessment Method	<ul style="list-style-type: none"> <li>– College based exams and coursework assessment</li> <li>– IELTS exams</li> </ul>
Qualifications Gained	Brockenhurst College certificate

## Pre-sessional Summer English Language Course

### Course overview

The Pre-sessional English Language Course enables you to improve your English language skills before you start your main studies. It is developed specifically to help build your confidence and give you the opportunity to understand useful academic terms and develop the necessary skills to support your main course of study.

### Is it for me?

This course is designed for those students who:

- Have an English level of IELTS 4.0 – IELTS 5.5 (or equivalent) in any band and would like to improve further.
- Have applied to study at Brockenhurst from September 2014 and for whom English is not their first language.
- Have already studied at Brockenhurst for one year and would like to improve their English before returning for a second year.
- Wish to have a refresher course before starting their studies.
- Are just interested in learning academic English to improve study opportunities.

**This course is available to everyone, even if you have not applied to study at Brockenhurst College for a longer academic course.**



### Programme overview

Age	16+
Course Duration	6 – 10 weeks
Start Date	June, July 2015
Hours per week	25 hours per week of English
English Language Requirement	Minimum overall IELTS 4.0 depending on programme of choice.
Qualifications Gained	Brockenhurst College attendance certificate

	Duration	Fee	Start Date
Tuition Fees	6 weeks	£1,500	Monday 20th July 2015
	8 weeks	£1,900	Monday 6th July 2015
	10 weeks	£2,300	Monday 22nd June 2015

You may also opt for our In-sessional Enhancement English Language Course if you need more support, or to target a university degree with high English entry requirements. This course runs alongside your A level or Vocational programme throughout the year in addition to your complementary English language classes to give you increased language and study skills support. Tuition fee: £2000/year.



## School Holiday Courses (Spring, Summer and Winter)

### Course overview

Brockenhurst's Spring, Summer and Winter Schools provide an exciting British cultural and study experience during your school break. Our two and four week programmes give you the opportunity to study and improve your English language skills by taking part in a range of classes, activities and trips.

Three options are available:

- Cultural Programme: A combination of engaging English language study and cultural activities with different themes (minimum age 12 years).
- Academic Programme with pathways in Humanities or Science: Intensive English language study plus additional academic study options (minimum age 14 years).
- Sports Programme: A programme of English language study in the mornings and various sporting activities in the afternoons (minimum age 14 years).



### Programme overview

Age	12+ depending on programme of choice
Course Duration	2 – 4 weeks
Start Date	Various start dates in Spring, Summer and Winter
Hours per week	25 hours per week of English and specialist classes depending on programme of choice
English Language Requirement	Pre-Intermediate or Intermediate depending on programme of choice
Qualifications Gained	Brockenhurst College attendance certificate
Fees	£550 - £800/week depending on programme (includes accommodation)

We also offer bespoke Spring, Summer and Winter school courses for groups. For example timetables, please check our website. If you require more information, please email: [international@brock.ac.uk](mailto:international@brock.ac.uk)



# Secondary Programmes

24

The following pages give details of the longer study programmes on offer to international students at Brock. These academic and vocational options will provide you with an excellent learning foundation in your preferred subjects and enable you to make the right choices about higher education and your future career. These programmes will help develop your confidence in using English language and build on your study skills.





# Pre-A Level Programme

26

## Is it for me?

This is a one year, intensive programme designed to prepare you for A Level study. It is an academic course that will enable you to build a good foundation of knowledge in terms of subject specific and English language skills. Upon successful completion of this programme, you will gain five GCSEs, which is the minimum requirement for UK schools and colleges for progression to A Level study. The course has been carefully structured to focus on four key academic areas, including English language and study skills, in order to allow students to progress to any A Level subject.

GCSEs are the main recognised examinations taken by students who have completed five years of secondary education in the UK before progressing to more advanced studies.



## What will I study?

You will study four core subjects:

- **English:** This course is based on the IGCSE English curriculum which is one of the world's most popular international qualifications. During the course you will improve your language skills and appreciation of literature. You will develop your ability to understand and respond appropriately and confidently to what you read, see, hear and experience. The course will offer study skills and examination techniques training.
- **Mathematics:** The course will provide you with a good grasp of the basic mathematical concepts and techniques that are essential to support study in a whole range of other subject areas. A GCSE Maths grade C is a requirement for most university courses as well as for many employers.
- **Combined Science (double award):** The course will provide you with an understanding of the three key science areas of Physics, Biology and Chemistry and their wide applications in our everyday life. A GCSE Science qualification is required for many careers, ranging from medical services to teacher training.
- **Business and Communication Systems\*:** This course allows you to develop the practical skills needed to use standard office software, as well as to explore and suggest improvements to communication systems within a business environment. These are considered to be key employability skills.

\*Spanish Language may be available as an alternative to Business and Communication Systems if you have the required previous knowledge of the subject, and if your timetable allows.

## Where will it take me?

Subject to the satisfactory completion of the Pre-A Level programme you will be eligible for direct progression to Brockenhurst College's A Level programme.

## Programme overview

Age	16+
Course Duration	1 year (3 terms)
Start Date	1 September 2015
Hours per week	22 hours
Academic Requirements	Completed junior high or secondary school with a satisfactory level of attainment. We will require your past two years of academic reports.
English Language Requirement	IELTS 5.0 overall with no band below 4.5 or equivalent UKVI approved English Language certificate.  Students with a high academic performance but with an overall IELTS score of below 5.0 will be offered the opportunity to join one of our English support courses (please see page 22) that will allow you to meet our English entry requirements.
Assessment Method	Students are assessed by GCSE examinations. Some subjects require coursework assessment as well. Students must display good studentship in order to be entered for examinations.
Qualifications Gained	5 GCSEs in English, Maths, Sciences (double award), Business and Communication Systems
Tuition fee	£8,500

# A Level Programme

28

## Is it for me?

The A Level Programme is a natural choice for you if you have enjoyed your junior high school or secondary study (GCSE equivalent) and are looking for an academically focused option. It is a two year programme which offers you the opportunity to build your knowledge and understanding in the subject areas in which you have proven strengths. Upon successful completion of the programme you will gain three or four A Levels which is a requirement by most prestigious universities in the UK and worldwide.

## What will I study?

In the first year of your A Level study you will choose up to four subjects for an AS qualification from a wide range of subjects. You are then encouraged to focus on your three strongest subjects for a second year to take the A2 examination and complete a full A Level. International students may also opt to study their native language as a fifth subject, if available.

In addition to your A Level subjects, you will also benefit from complementary English classes specifically designed for speakers of other languages. These classes run alongside your A Level classes throughout the year to support you further to achieve outstanding results. Should you need more support or if you are targeting a university degree with high English entry requirements, you may also opt for our In-sessional Enhancement English Language Course which includes additional language and study skills support (please see page 22).



Explore and develop your creativity with A Level Fine Art

A Levels are internationally recognised qualifications for university entrance. In order to achieve a full A Level in a subject area you will need to take AS and A2 examinations, usually spread over two years.

Almost 50 A Level subjects are offered at Brockenhurst College:

Archaeology	Graphics
Biology	Health and Social Care
Business	History
Chemistry	Information and Communication Technology
Chinese	Mathematics and Further Mathematics
Classical Civilisation	Mathematics - Mechanics
Communication and Culture	Mathematics - Statistics
Computer Science	Mathematics - Uses
Creative Writing	Media Studies
Dance	Music
DT Resistant Materials	Music Technology
Drama	Performance Studies
Economics	Philosophy
Electronics	Photography
English Language	Physics
English Language and Literature	Physical Education
English Literature	Psychology
Environmental Studies	Religious Studies
Film Studies	Sociology
Fine Art	Spanish
French	Textiles
Geography	
Geology	
German	
Government and Politics	

Brock offers the flexibility of any A Level subject combination – one of the advantages of joining a prestigious larger college.

## Where will it take me?

After completing an A Level programme you can study for a range of university degree programmes at top universities in the UK and abroad.

We have a consistent 99% pass rate year-on-year. In 2014, over 50% of our students gained A\*-B grades and 75% of all Brock students achieved A\*-C grades across all subjects.



Photography is accepted by universities as a discipline showing wide-ranging ability.



A Level Geography will give you a good foundation in physical processes, human interactions and help develop key inquiry skills.

## Programme overview

Age	16+
Course Duration	2 year (3 terms per year)
Start Date	1 September 2015
Hours per week	Approximately 4 hours per week for each A Level subject.  3 hours per week English language (ESOL) support for all students until you achieve IELTS 6.5 or equivalent.
Academic Requirements	It is expected that students will have completed at least one year of senior high or secondary school with a good level of attainment. We will require your past two years of academic reports.
English Language Requirement	IELTS 5.0 overall with no band below 5.0 or equivalent UKVI approved English Language certificate.  Students with a high academic performance but with an overall IELTS score of below 5.0 will be offered the opportunity to join one of our English support courses (please see page 22 for more information) that will allow you to meet our English entry requirements.
Assessment Method	Students are assessed by GCE Advanced Level examinations. Some subjects require coursework assessment as well. Students must display good studentship in order to be entered for examinations.
Qualifications Gained	Typically 3 full A Levels
Tuition Fee	£7,700/academic year

# Vocational Programmes

30

## Is it for me?

Our Vocational Programmes are a great option for you if you have done well in your GCSE (or equivalent) studies and now wish to move on to a practical education course focused on your career plans which are a good alternative to A levels. These are two year programmes which offer you the opportunity to focus on the career area of your choice and develop the knowledge and skills that you need for employment or university education in your chosen field.

## What will I study?

This Programme will offer you applied learning related to work which is designed to accommodate the needs of employers and to enable your progression to university.

You will be taught by subject specialists and will develop practical and theoretical skills which are assessed through assignments rather than exams. Most of your time will be spent in the College but you will also have the chance to undertake a work placement. Upon successful completion of the two year programme you will be awarded a Level 3 Diploma.

In addition to your subject study, you will also benefit from complementary English classes specifically designed for speakers of other languages. These classes run alongside your vocational classes throughout the year to support you further and ensure you achieve outstanding results. Should you need more support or wish to target a university degree with high English entry requirements you may also opt for our In-sessional Enhancement English Language Course which includes additional language and study skills support (please see page 22).

Vocational qualifications are internationally renowned and can lead to direct progression to employment or university entrance. They are widely known as BTECs.

Courses are offered in the following subject areas:

Art & Design

Beauty Therapy

Bricklaying

Business

Carpentry & Joinery

Children's Learning & Development

Electrical Installations

Engineering

Health & Social Care

Hospitality

Information & Communication Technology

Marine Construction

Marine Engineering

Media

Music

Performing Arts

Photography

Plumbing

Professional Cookery/Chef's Diploma

Sports, Exercise & Fitness

Travel & Tourism

Uniformed Public Services



Performing Arts students work towards two performances each year, showcasing their skills to an invited audience.

## Where will it take me?

Vocational courses can prepare you for university study or lead you directly into a career of your choice. The Level 3 Diploma is broadly equivalent to 3 A Levels.

In 2014, many international students completed vocational programmes and entered professions such as hospitality management, design and communications.



*Hospitality training takes place in our industry-standard kitchens and restaurant.*



*Our Travel and Tourism courses prepare students for employment in travel agencies, hotels, for tour operators and airlines.*

## Programme overview

Age	16+
Course Duration	2 year (3 terms per year)
Start Date	1 September 2015
Hours per week	Approximately 15 hours per week including all work placement visits.  3 hours per week English language (ESOL) support for all students until you achieve IELTS 6.5 or equivalent.
Academic Requirements	It is expected that students will have completed at least one year of senior high or secondary school with a good level of attainment. We will require your past two years of academic reports.
English Language Requirement	IELTS 5.0 overall with no band below 5.0 or equivalent UKVI approved English Language certificate.  Students with a high academic performance but with an overall IELTS score of below 5.0 will be offered the opportunity to join one of our English support courses (please see page 22 for more information) that will allow you to meet our English entry requirements.
Assessment Method	Students study real-life, work-based case studies and complete projects and assessments which contribute to achieving against a set of outcomes.
Qualifications Gained	BTEC Level 3 Diploma
Tuition fee	£ 7,700/academic year

# University Preparation Programmes

32

If you're aiming to study for a degree at university, Brock can offer you a range of Foundation Year options which have been specially developed for international students.

Our Foundation Programmes offer you a reassuring learning environment, enabling your transition from college to university study, while you gradually become a more autonomous learner.









For more information visit [www.brock.ac.uk/international](http://www.brock.ac.uk/international)

## Foundation Programmes

Our Foundation Programmes offer an enhanced syllabus building upon our successful A Level curriculum to provide international students with the knowledge and skills required by universities for successful undergraduate study.

### Is it for me?

These one year programmes are specifically designed for international students and offer an excellent route to academic success in your chosen area. You will be able to choose a specialist pathway providing you with all the required support to successfully progress to an undergraduate degree. The structure of each pathway equips you with quality subject-specific learning, integrated study skills coaching and advanced English language training, to ensure that you achieve full potential prior to university study.

On successful completion, our Foundation programmes also offer you guaranteed progression to prestigious UK universities.

Please see our website for more details:  
[www.brock.ac.uk/international](http://www.brock.ac.uk/international)

### What can I study?

You can choose from the following three pathways:

- Foundation Diploma in Art & Design
- International Foundation Year in Business & Finance
- International Foundation Year in Science & Engineering

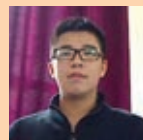


"I chose to Study the Foundation Year at Brock because I knew I wanted to study Art at a top university like University of the Arts London, Central St Martins. I didn't feel ready to go to university, so the Foundation Year was the perfect solution."

*Isabel Chow, Foundation Diploma in Art and Design.*



Our partner Universities attend the Brock Higher Education Fair every year. Here are some of the other Universities who attended in 2014: University of Bath, University of Birmingham, Bristol University, University of Cambridge, Cardiff University, University of Edinburgh, University of Exeter, University of Kent, Lancaster University, University of Leeds, University of Leicester, London School of Economics, Newcastle University, University of Nottingham, University of Oxford, University of Southampton, University of Surrey, University College London (UCL), University of East Anglia, University of Warwick.



"The course is really enjoyable and it will allow me to progress to a top UK University. The Brock teachers are always willing to help me develop specialist knowledge and I have received a great deal of support."

*Michael Tang, International Foundation Year in Science and Engineering.*

# Foundation Diploma in Art & Design

36

## Programme aims and outcomes

This programme is designed to provide you with a broad range of artistic and design disciplines and practices, while building essential skills prior to specialising in your chosen area. It will educate you to make informed decisions which will facilitate your development in the Art & Design industry. It builds on your prior knowledge and experience to help you enhance your skills and challenge your ideas.

The programme aims will assist you to:

- Get acquainted with self-reliant learning techniques while exploring skills and concepts central to art, design, craft and communication practice.
- Develop intellectual curiosity through critical understanding and advanced learning.
- Develop an ability in methods of creative production.
- Provide opportunities to participate in 'live projects'.

## Where can it take me?

This course prepares you for a specialist degree course at university or specialist arts colleges, or the launch of your career in the creative industries.

## Why Brock?

With excellent facilities, and teachers who are experts in a range of artistic disciplines, students are able to study in a truly creative environment and may visit the many exceptional Art & Design specialist universities and colleges in London and elsewhere.

## Programme structure

The course is divided into three key stages reflecting the diagnostic and preparatory nature of the qualification; Exploratory, Pathway and Confirmatory. You will study the following mandatory units:

Units	Stages
Researching, Recording and Responding in Art & Design	Stage 1 – Exploratory
Media Experimentation in Art & Design	
Preparation and Progression in Art & Design	Stage 2 – Pathway
Information and Interpretation in Art & Design	
Extended Media Development in Art & Design	
Final Major Project in Art & Design	Stage 3 - Confirmatory

**In 2014, the Foundation Diploma in Art & Design offered 100% progression with Brock students entering prestigious universities like Central Saint Martins, University of the Arts London and Winchester School of Art.**



*The course includes an option in Textiles (fashion and surface pattern).*



## Programme overview

Age	17+
Course Duration	1 year (3 terms)
Start Date	1 September 2015
Hours per week	15-20 hours per week; studio availability throughout the week for independent working.  3 hours per week English language and study skills support specifically designed for Foundation students.
Academic Requirements	It is expected that students will have completed 2 or 3 years of high or senior secondary school with a high level of attainment in creative subjects. You will also be expected to provide a portfolio of your artwork.
English Language Requirement	IELTS 5.0 overall with no band below 5.0 or equivalent UKVI approved English Language certificate.  Students with a high academic performance but with an overall IELTS score of below 5.0 will be offered the opportunity to join one of our English support courses (please see page 22 for more information) that will allow you to meet our English entry requirements.
Assessment Method	100% coursework
Qualifications Gained	Edexcel BTEC Level 4 Foundation Diploma in Art & Design
Tuition Fee	£8,500



*Our specialist studios enable students to explore a wide range of topics including painting, sculpture, installation and 3D design.*

# International Foundation Year in Business & Finance

38

## Programme aims and outcomes

This university preparation programme is designed for international students whose first language is not English and who require additional academic support for admission to undergraduate courses. It aims to develop an understanding of key business and finance-related concepts and to apply these in a real-world business context. You are encouraged to read the business and financial news to consolidate your technical understanding and deepen and broaden your wider subject knowledge.

It is expected that by the end of the programme you will be able to:

- Analyse current issues and trends based on contemporary theories and concepts.
- Employ related concepts in both case-study and real-world business scenarios.
- Critically evaluate business strategies, objectives and techniques.
- Identify and utilise appropriate business and finance tools.
- Present balanced discussions and solutions to real-life scenarios.
- Confidently employ the required skills of academic reading, listening, speaking and writing.



## Programme structure

You will need to achieve a total of 140 credits to successfully complete the programme. You may choose from a selection of core modules related to your pathway. Each module is worth 40 credits and will be chosen according to your academic background and intended degree programme upon consultation with your College tutor. If your English language level is below a specified level, the 40-credit module in Academic English for Foundation Students is compulsory. You will also take a 20-credit compulsory module in Academic Study Skills.

Modules	Credits	Outline
Compulsory modules		
Academic Study Skills	20	This consists of one hour of tuition per week and is divided into two modules. The aim is to extend your academic study skills through cultural studies. References to historical periods and characters often appear in academic texts.
Core modules – You need to choose 120 credits		
Academic English for Foundation Students  *This module will be compulsory for all students with IELTS overall score below 6.0	40	There will be 5 hours of tuition per week in listening, reading, speaking, writing and vocabulary in a range of academic areas. You will reflect on your progress and be involved in setting learning targets on your Individual Learning Plan.
Introduction to Business & Management	40	The module covers the following units: Business and Enterprise, Business Finance, People in Business, Operations, Marketing, Internal and External Change in a Business Context, Managing Change.

Principles and Applications of Economics	40	The module covers the following units: Fundamental Principles in Economics, Microeconomics, Macroeconomics, International Economics, Development Economics.
Concepts of Mathematics	40	The module covers the following units: Foundations in Algebra, Number, Geometry & Trigonometry, Building Mathematical Skills in Algebra, Number, Geometry & Trigonometry, Applying Mathematical Skills in an Investigation, Practical Skills in Mathematics.

“Reading University has a working relationship with Brockenhurst College, and this year has received a number of good quality applications. We look forward to continuing to work together to build on this.”

*Claire Ballard, Reading International Office*

Upon successful completion of this programme, you are guaranteed a place at the University of Reading, home of the internationally renowned Henley Business School.



## Programme overview

Age	17+
Course Duration	1 year (3 terms)
Start Date	1 September 2015
Hours per week	Approximately 20 hours per week of lectures and seminars Approximately 25 hours per week guided independent study
Academic Requirements	It is expected that students will have completed 2 or 3 years of high or senior secondary school with a high level of attainment in subject related subjects.
English Language Requirement	IELTS 5.0 overall with no band below 5.0 or equivalent UKVI approved English Language certificate.  *Students with a high academic performance but with an overall IELTS score of below 5.0 will be offered the opportunity to join one of our English support courses (please see page 22 for more information) that will allow you to meet our English entry requirements.
Assessment Method	You will be assessed through a mixture of regular coursework and assessments during and at the end of each module.
Qualifications Gained	Graduation Diploma with direct progression to top University partners
Tuition Fee	£9,950

# International Foundation Year in Science & Engineering

40

## Programme aims and outcomes

This university preparation programme is designed for international students whose first language is not English and who require additional academic support for admission to undergraduate courses. It aims to help you develop an advanced knowledge and understanding of science and engineering concepts to enable progression to an undergraduate level of study in a related field.

It introduces you to a range of transferable explanatory and evaluative skills in science and engineering and encourages you to apply your experience and skills. It is expected that by the end of the programme you will also be able to confidently employ the skills of academic reading, listening, speaking and writing.

## Programme structure

You will need to achieve a total of 140 credits to successfully complete the programme. You may choose from a selection of core modules related to your pathway. Each module is worth 40 credits and will be chosen according to your academic background and intended degree programme upon consultation with your College tutor. If your English language level is below a specified level the 40-credit module in Academic English for Foundation Students is compulsory. You will also take a 20-credit compulsory module in Academic Study Skills.



## Where can it take me?

Depending on your module selection, this course prepares you for a specialist undergraduate degree course in a science, computing or engineering degree area. Successful completion of this course offers guaranteed progression to our top university partners

Modules	Credits	Outline
Compulsory modules		
Academic Study Skills	20	This consists of one hour of tuition per week and is divided into two modules. The aim is to extend your academic study skills through cultural studies. References to historical periods and characters often appear in academic texts.
Core modules – You need to choose 120 credits		
Academic English for Foundation Students  *This module will be compulsory for all students with IELTS overall score below 6.0	40	There will be 5 hours of tuition per week in listening, reading, speaking, writing and vocabulary in a range of academic areas. You will reflect on your progress and be involved in setting learning targets on your Individual Learning Plan.
Biology	40	The module covers the following units: Cell and Molecular Biology, Biochemistry, Biological Research Methodology, Practical Skills in Biology Energy Flow, Control, Co-ordination, Reproduction and Genetics.



Chemistry	40	The module covers the following 4 units: Atomic Structure, Bonding and Periodic Table, Fundamental Principles of Physical Chemistry, Investigative Chemistry, Organic Chemistry and Chemical Applications.
Concepts of Mathematics	40	The module covers the following units: Foundations in Algebra, Number, Building Mathematical Skills in Algebra, Number, Applying Mathematical Skills in an Investigation, Practical Skills in Mathematics.
Physics	40	The module covers the following 4 units: Basic Mechanics, Heat, Materials and Atoms, Oscillations and Waves, Electricity, Fields and Electromagnetism.

Upon successful completion of the Brock Foundation programme, you will be offered direct progression to one of our partner Universities including the University of Reading and Kingston University.



## Programme overview

Age	17+
Course Duration	1 year (3 terms)
Start Date	1 September 2015
Hours per week	Approximately 20 hours per week of lectures and seminars Approximately 25 hours per week guided independent study
Academic Requirements	It is expected that students will have completed 2 or 3 years of high or senior secondary school with a high level of attainment in subject related subjects.
English Language Requirement	IELTS 5.0 overall with no band below 5.0 or equivalent UKVI approved English Language certificate.  *Students with a high academic performance but with an overall IELTS score of below 5.0 will be offered the opportunity to join one of our English support courses (please see page 22 for more information) that will allow you to meet our English entry requirements.
Assessment Method	You will be assessed through a mixture of regular coursework and assessments during and at the end of each module.
Qualifications Gained	Graduation Diploma with direct progression to top University partners
Tuition Fee	£9,950

# Higher Education Courses (HNDs)

42

## Is it for me?

Higher National Diploma (HND) courses are well-established Higher Education courses focusing on practical learning and experience, providing you with the skills and knowledge to pursue a specific career.

They are highly-regarded courses as they offer you industry-related knowledge as well as practical skills. You will become accustomed to the techniques, tools, skillset and attitudes required for effective performance at work. You will study alongside UK students and upon successful completion of the course, you will be able to progress to a full undergraduate degree by doing a 'Top-up' year at one of our partner universities or elsewhere.

In addition to your HND subject-specific study, you will also benefit from complementary English classes specifically designed for speakers of other languages. These classes run alongside your HND course throughout the year to support you further and enable you to achieve outstanding results. Should you need more support or if you wish to target a university degree with high English entry requirements, you may also opt for our In-sessional Enhancement English Language Course which includes additional language and study skills support (please see page 22).

Highly valued by industry in the UK and internationally, HND courses at Brock are studied over two years and are assessed through assignments, projects and practical tasks. We offer a friendly learning environment, small classes and English classes providing you with all the support you need to successfully complete a Higher Education programme.

## Where can it take me?

You may opt to continue your studies at a UK university to gain a degree qualification, or progress directly into your chosen career.

## Programme overview

Age	17+
Course Duration	Two years (three terms per year)
Start Date	1 September 2015
Hours per week	Approximately 15 hours per week of lectures and seminars  Approximately 25 hours per week guided independent study
Academic Requirements	Entry is by interview. We will also need to look at 2 years of academic records as well as assess your portfolio or professional experience, depending on the HND course.
English Language Requirement	IELTS 5.5 overall with no band below 5.5 or equivalent UKVI approved English Language certificate.  *Students with a high academic performance but with an overall IELTS score of below 5.5 will be offered the opportunity to join one of our English support courses (please see page 22 for more information) that will allow you to meet our English entry requirements.
Assessment Method	You will be assessed through a mixture of regular coursework and assessments during and at the end of each module, depending on the HND course.
Qualifications Gained	Edexcel HND Diploma
Tuition Fee	£8,000/academic year

## HND in Applied Biology

This is a two year course enabling you to gain high-level skills with a view to developing a career in Biological Sciences. The course has been developed by the highly successful Biology team at Brockenhurst in response to the high demand for skills in this area. Students will be equipped with skills in analysis, project planning, deconstructing complex scientific systems into smaller parts, mathematics, and technical skills including problem-solving and IT.

Successful completion of the HND will prepare you to take advantage of the high demand for skills gained from the study of STEM (Science, Technology, Engineering and Mathematics) subjects, in both the UK and international marketplace. Alternatively you can progress to complete a degree at one of a number of UK universities.

## HND in International Hospitality Management

This two year course combines academic study with practical on-the-job, paid work experience. Working in collaboration with major employers in the UK hospitality industry, this balance of learning and working provides a strong foundation for a career in this exciting and ever changing global industry.

The course is designed to prepare you for management and leadership careers in the international hospitality industry. As an internationally recognised qualification the HND is a very good foundation for entry to a professional career or progression to a further degree and professional qualifications. Progression opportunities exist both within the UK, for example to Bournemouth University, but also to international hotel schools in Switzerland or Australia.

Our HND in International Hospitality Management offers direct progression to a Year 3 Hospitality degree course at Bournemouth University.



## HND in Computing and Systems Development

This is a two year course designed to allow you to gain high-level skills with a view to following a career in Information Technology. The course has been developed by the highly successful Computing and IT team at Brockenhurst in response to the high demand for skills in this area. You will be equipped with skills in programming, networking, technical support, systems analysis and project management.

Successful completion of the HND will prepare you to take advantage of the high demand for Computing and IT skills in both the UK and international marketplace. Alternatively students can progress to complete a degree at one of a number of UK universities.

Brock is proud to be a recognised Microsoft IT Academy which enables HND students to take further qualifications for an additional fee.

## HND Photography

This is a two year practice-based photographic course, which will enable you to build a strong portfolio of photographic images and imaging skills alongside a clear understanding of the photographic industry and employment opportunities. The HND aims to provide practical hands-on experience for those actively seeking employment within the photographic industry. You can also progress to a number of UK universities to complete a degree.

You will undertake a large variety of projects, from self-generated work through to live briefs from external clients. The course will be primarily based in digital imaging; however there will be elements of traditional silver-based photography throughout the course. During self-generated work you will have the freedom to explore your own particular area of interest, with the live briefs providing a clear understanding of the relationship between client and photographer.

# Applications, Interviews and Enrolment

44

Brockenhurst welcomes applications from all over the world. The International Team is here to offer you help and guidance every step of the way.

## Applications

(September 2014 onwards):

Download and complete the 2015/16 application form and send it back to us with any relevant documents.

## Interviews

(October 2014 onwards):

Interviews will take place in either your home country or via Skype. You'll receive a confirmation of your interview beforehand, giving you details.

## Interview outcome:

You will receive a conditional offer of a place at College within one week of your interview.

## Accepting your offer:

In order to confirm your place, you will need to send us all the relevant documents to show you meet all conditions as well as of proof of your deposit payment. If you require a VISA to study in the UK, we will also issue a Confirmation of Acceptance for Studies (CAS) within 48 hours upon receipt of all required documentation.

## New Student website page

(May 2015):

In May, our 'New Student' section of the Brock website is available, including information about travel and financial assistance. You'll also have access to a special students' portal packed with information and forms you can complete online.

## New Students' Day

(July 2015):

At the end of July, you will have the opportunity to try out your chosen courses, explore the campus and meet new friends.

## Meet and Greet Service

(August 2015):

The International Team will be available to welcome you at Heathrow Airport. This is a complementary service during the last week in August.

## Enrolment and Induction Day

(September 2015):

This will be your first day as a new student. You will meet your Personal Tutor and other students in your group. You will also receive your study timetable and choose your Enrichment options.

Full details of the application process can be found on our website, where you can also download an application form from [www.brock.ac.uk/international/apply](http://www.brock.ac.uk/international/apply)



# Fees, Scholarships and Visas

## 46 Fees

Tuition fees quoted in this Prospectus include:

- A full-time programme of study
- All academic and personal support, including a Personal Tutor, International Tutorial programme and Progress Manager
- Examination entry (including resits)
- English Language classes
- College clubs and society membership
- Gifted and Talented programme for high-achieving students
- Free London Heathrow airport pick-up service on specified dates
- Dedicated Higher Education guidance and specialist Oxbridge application support

Please note: additional course resource costs apply, to cover course resources (£50-£80 per course), trips and sporting equipment. All students will be required to pay a non-refundable registration fee of £20 upon arrival.

### Homestay Accommodation Fees

In 2015/16 a variety of homestay accommodation options are offered, ranging from £6,500 to £9,500. Please check our website for more information:

[www.brock.ac.uk/homestay](http://www.brock.ac.uk/homestay)

### Independent Support Fee

Any students not living in accommodation arranged by Brockenhurst College are subject to an independent support fee of £500 to cover administration expenses.

### Scholarships

Brock is pleased to be able to offer a range of International Scholarships.

For further information, please visit [www.brock.ac.uk/scholarships](http://www.brock.ac.uk/scholarships)

### Immigration Advice

Brockenhurst College is a Highly Trusted Sponsor for the UK Immigrations Tier 4 Points Based System and we are therefore licensed to welcome international students wanting to study in Britain.

It is very important that you have the correct visa in order to live and study in the UK. The Home Office changes its regulations from time to time and you must ensure that you are familiar with the terms of your visa. You'll be supported throughout the College application process by our dedicated immigration specialist.

For further information, visit [www.ukba.homeoffice.gov.uk](http://www.ukba.homeoffice.gov.uk) and the college website [www.brock.ac.uk/international](http://www.brock.ac.uk/international)

### EEA Student Support Fee

At Brock, we are committed to providing an outstanding learning experience as well as a balanced social life for our international students and aim to ensure equity in terms of their learning experience and achieving outstanding results.

In 2014, we introduced a student support fee for all EEA students coming to Brock for a full academic year. This applies to all students that are entitled to a tuition fee waiver due to their nationality. This fee will enable us to continue offering and improving upon the following key areas:

- Application advice and guidance re UK education system
- IELTS advice and guidance
- International student induction
- Orientation and advice
- Additional enrolment support to understand UK education system and options
- Additional tutorial support (international tutor) and an inclusive learning environment to make friends
- Study skills support
- Accommodation information and advice
- Host family advice and placement, if applicable
- Accommodation support
- 24/7 emergency support
- International student events and extra-curricular activities
- Attendance and exams additional support

### Student Support Fees for 2015/16:

2 year programmes	1 year programmes
£4,000/year	£5,000

# Contact Us

More> [brock.ac.uk/international](http://brock.ac.uk/international)

Brock has a dedicated international team to help you through all stages of the application process, prepare you for arrival in the UK and support you once you join us.

To find out more about the staff who specialise in International education, please visit:  
[www.brock.ac.uk/international/team](http://www.brock.ac.uk/international/team)

You may also contact your local Agent for further information about studying with us.

**Address:** Brockenhurst College  
International Department  
Lyndhurst Road  
Brockenhurst,  
Hampshire  
SO42 7ZE  
United Kingdom

**Telephone:** +44 (0)1590 625 325

**Email:** [international@brock.ac.uk](mailto:international@brock.ac.uk)

**Website:** [www.brock.ac.uk/international](http://www.brock.ac.uk/international)



The International Team

We have used our best efforts to ensure that all information provided in this prospectus is correct at the time of going to print (October 2014). However, on occasion some changes may need to take place and our website will be updated regularly to reflect any changes whenever possible.

## **Brockenhurst College**

Lyndhurst Road

Brockenhurst

Hampshire SO42 7ZE

United Kingdom

**international@brock.ac.uk**

+44 (0)15 9062 5555

+44 (0)15 9062 5325

**www.brock.ac.uk/international**

