

LAWSON



Manufacturing Engineering Training Guide

designed by Rose Marie Johnson

Table of Contents

Welcome to Lawson M3 Manufacturing Engineering Training!	3
Purpose	3
Scope	3
How to Use this Guide	3
Module 1: Creating a Work Center	4
Module 2: Creating Work Center Capacity (Mass Update)	16
Module 3: Creating and Reviewing Work Center Capacity	20
Module 4: Linking Queue/Transit Time to a Work Center	28
Module 5: Checking Where-Used Analysis	40
Module 6: Creating an Engineering Change Order for Product Structure Revisions	48
Module 7: Creating and Updating Purchase Order External Instructions	65
Module 8: Creating an ECO Type	74
Module 9: Creating a New Product Structure	81
Module 10: Creating an Alternate Product Structure	93
Module 11: Adding or Updating Material/Tooling in a Product Structure	111
Module 12: Renumbering a Product Structure	121
Module 13: Printing a Product Structure	128
Module 14: Reprinting a Manufacturing Order	136
Module 15: Viewing an Indented Bill of Material	143
Module 16: Reporting Labor Against a Manufacturing Order, Manually	151

Welcome to Lawson M3 Manufacturing Engineering Training!

Purpose

The purpose of **Lawson M3 Manufacturing Engineering Training** is to provide step-by-step procedures in:

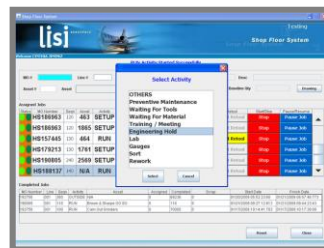
- Creating a Work Center and Work Center Capacity
- Linking Queue/Transit Time to a Work Center
- Creating an Engineering Change Order for Product Structure Revisions
- Creating and Updating Purchase Order External Instructions
- Creating an ECO Type
- Creating New and Alternate Product Structures
- Adding or Updating Material/Tooling in a Product Structure
- Renumbering a Product Structure
- Reporting Labor Against a Manufacturing Order, Manually

Scope

Lawson's M3 Enterprise Management System is designed to support organizations like ABC Corporation considering resources are constrained; processes are complex; and the company is international in scope. **M3** which stands for **Make, Move, and Maintain** provides a robust, integrated enterprise application suite covering many of the corporation's core and supporting processes including Financial Management, Customer Relationship Management, Manufacturing, Supply Chain Planning, Supply Chain Execution and Service & Maintenance.

How to Use this Guide

The **Lawson M3 Manufacturing Engineering Training Guide** is designed for hands-on, instructor-led training. It contains screen shots (as below) which display most, step-by-step, functions to enhance the training experience as well as act as reference material.



Step tables, as displayed below, provide step-by-step actions appearing in the 'Step' section. An explanation of each action, including *Notes*, *Important Notes* and *Examples* appear in the 'Result' column. Where explanations are not necessary, the Result section shall remain blank.

Step	Result

Module 10: Creating an Alternate Product Structure

Purpose

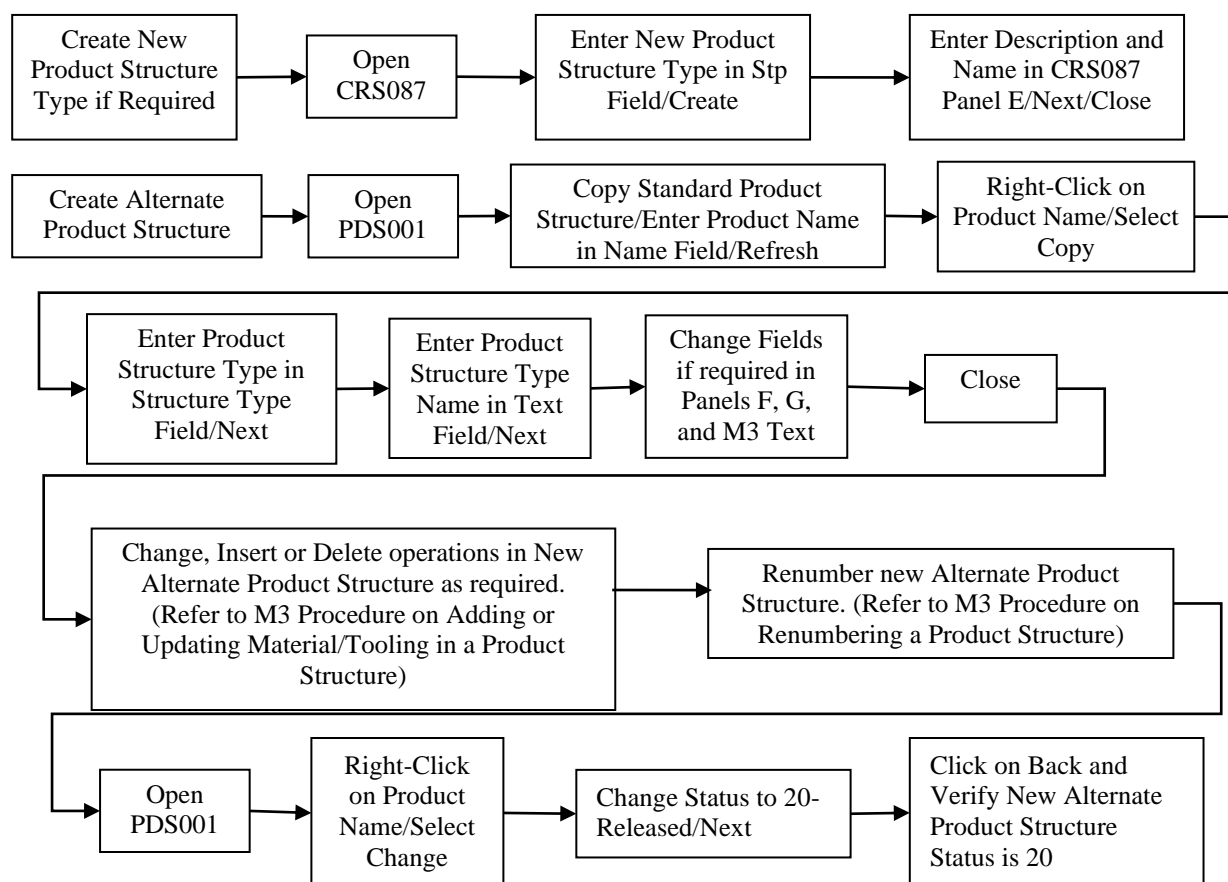
The purpose of this module is to provide procedures for Creating an Alternate Product Structure.

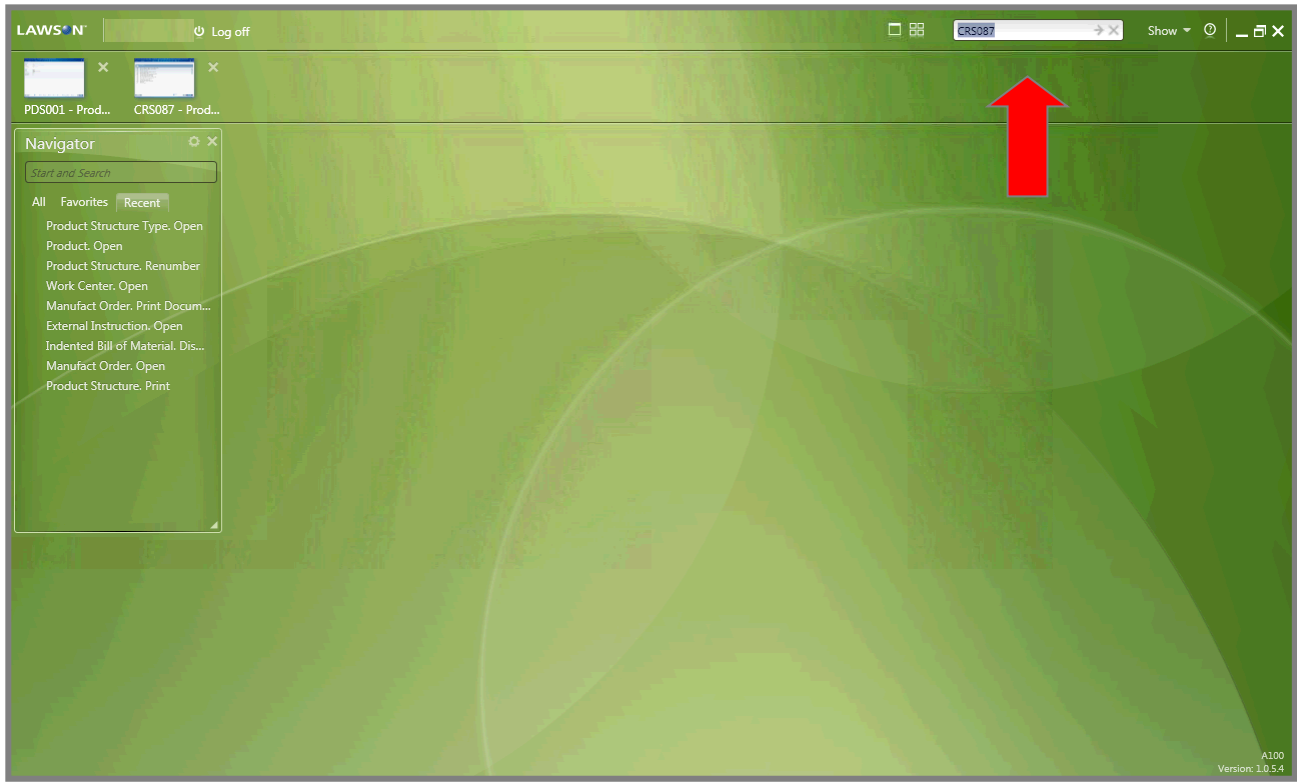
Scope

The scope of this module is to demonstrate steps required in Creating an Alternate Product Structure.

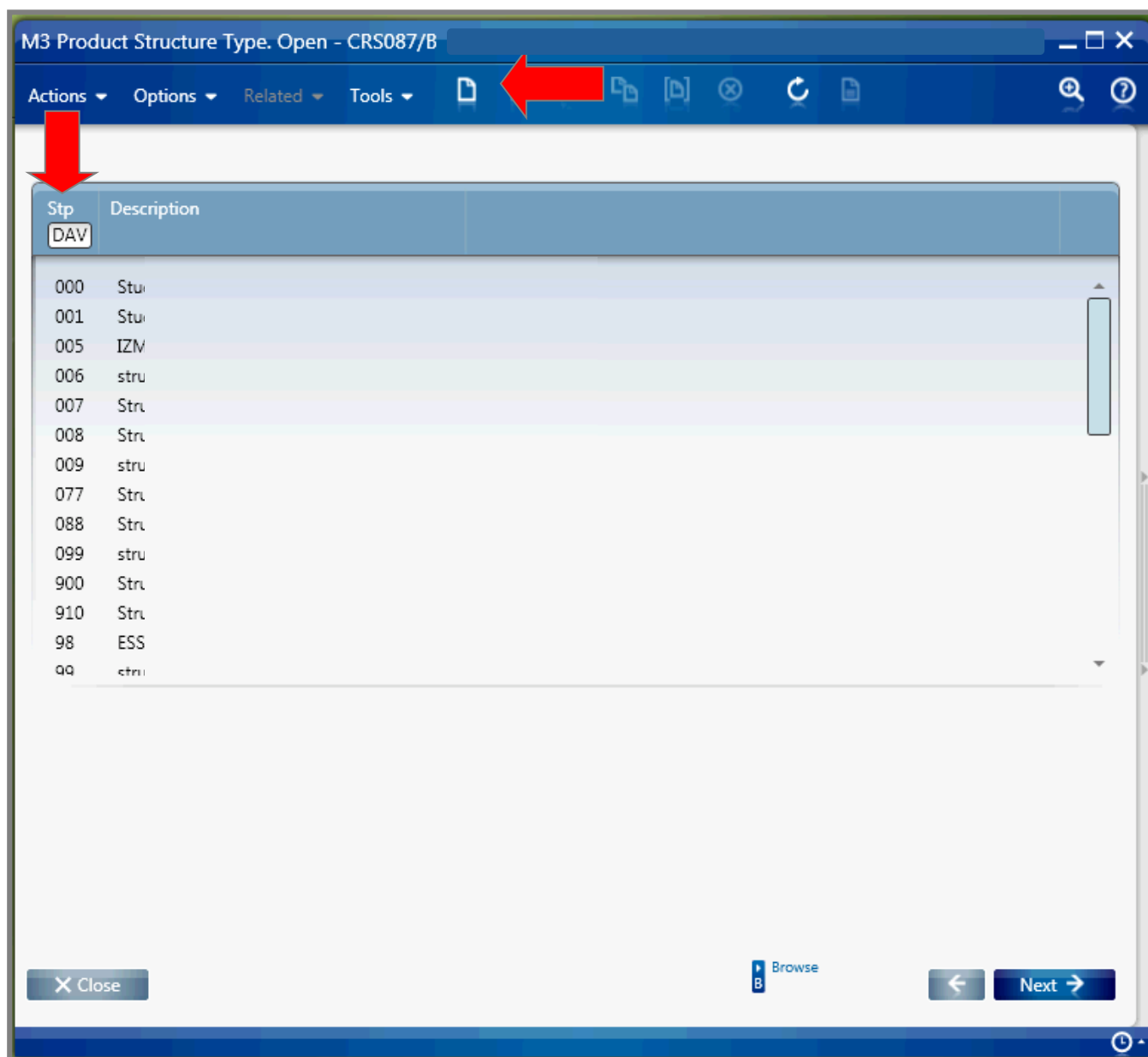
Process Flow

The following flow chart represents the process of Creating an Alternate Product Structure in M3:





Step	Result
1. In the START AND SEARCH field, type “CRS087” and press the ENTER key.	The CRS087/B screen appears.



Step	Result
1. In the CRS087/B screen, type a new product structure type in the STP field.	The new product structure type appears in the STP field.
2. Click the CREATE button.	The CRS087/E screen appears.

M3 Product Structure Type. Open - CRS087/E

Actions ▾ Options ▾ Related ▾ Tools ▾

Panel Header

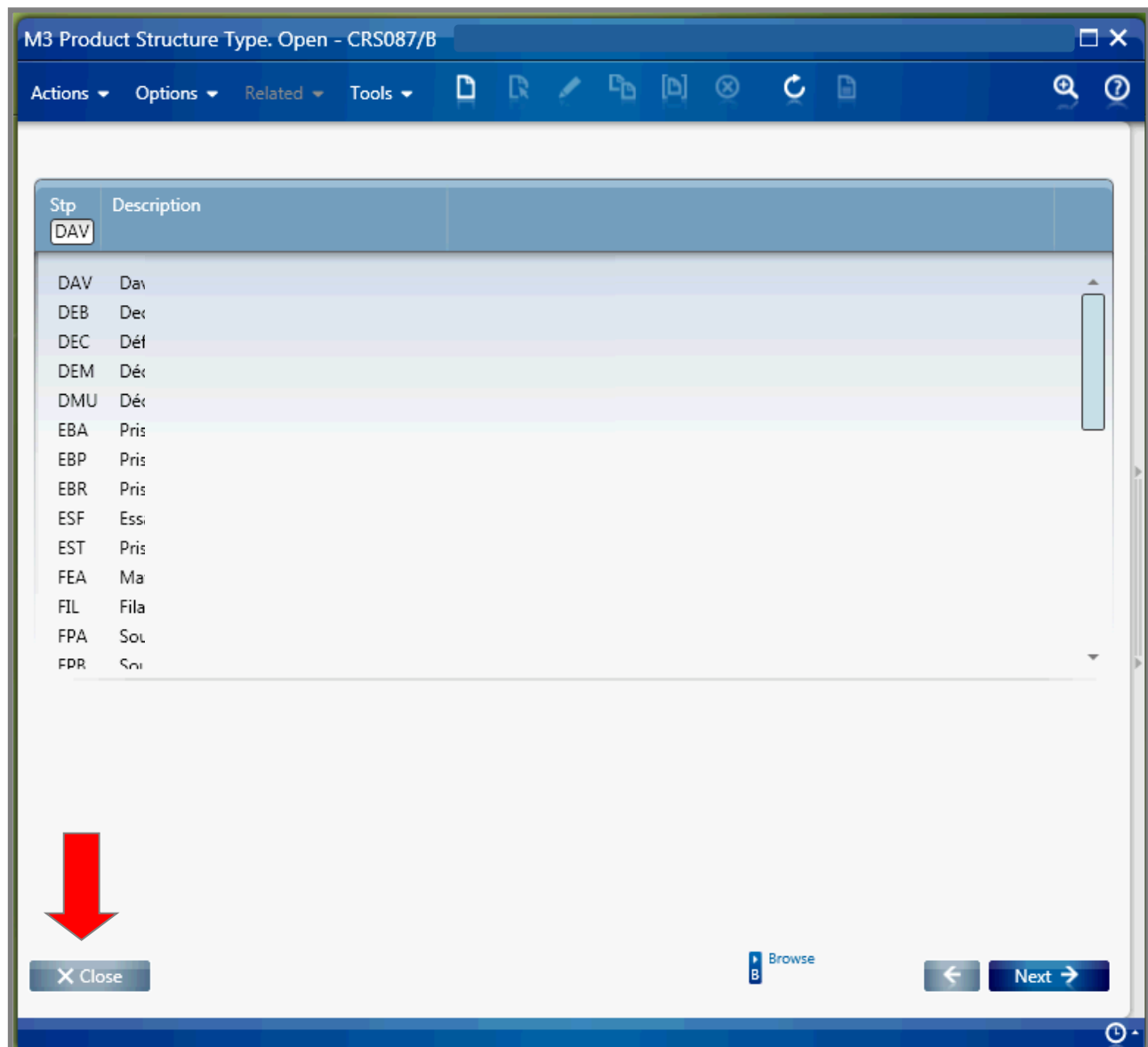
Structure type: DAV

Description: Davenport

Name: Davenport

Close Browse Basic Information (E) Next

Step	Result
1. In the CRS087/E screen, type a description in the DESCRIPTION field.	The description appears in the DESCRIPTION field.
2. In the NAME field, type a name of the description.	The name of the description appears in the NAME field.
3. Click the NEXT button.	The CRS087/B screen appears.



Step	Result
1. In the CRS087/B screen, click the CLOSE button.	The CRS087/B screen closes.