

NSI81 - wooden and metal trays

The designs behind our collection of metal trays are inspired by nature's hidden wonders. We have tried to focus on designs that capture the raw beauty of different elements of nature.

For instance, we wanted the design of our golden trays and their hammered texture to echo the moon's cratered face, whispering tales of celestial magic. The design inspiration behind the black trays with wavy rims was to reflect the gentle ripples on a calm lake, inviting moments of stillness and peace. And, the wooden tray with feather-shaped handles, mirroring the light, airy grace of falling feathers and capturing the subtle nuances of nature's beauty.

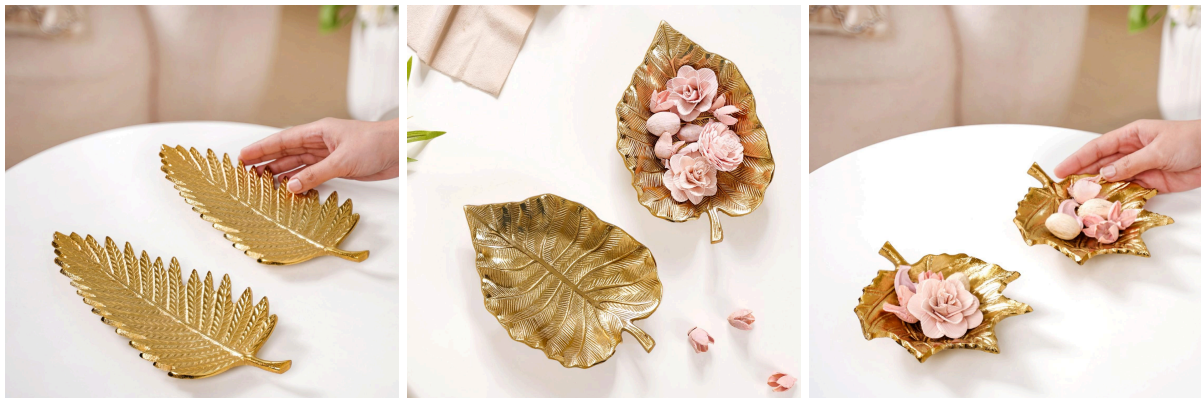


This fresh new collection is our way to help you transform your home decor and celebrate the world's quiet marvels.

NSI84 - metal leaf platters

The designs of our new metal tray collection draw inspiration from the captivating forms of nature. Each design embodies the elegance and intricacy of various leaves.

The maple leaf-shaped trinket tray captures the iconic beauty of autumn, while the colocasia leaf-shaped tray reflects tropical allure. The fern leaf tray showcases the delicate, lush texture of forest flora, and the lotus leaf-shaped tray designs symbolise the tranquil beauty of floating lotus leaves in pond water.



These nature-inspired designs blend artistry and functionality, offering a unique aesthetic that brings the serene beauty of the outdoors into your home, enhancing the decor with their timeless and organic forms.

NSI82 - cutlery

Inspired by the vibrant elegance of a spring flower garden, our new cutlery range seamlessly blends botanical beauty with functional design.

The dessert spoon set features delicate floral bloom and leaf-shaped handles, while the spoon and butter knife set showcases intricate bird and bee motifs on a floral handle design.



Our serving spoon set is designed to mirror a flowering branch adorned with leaves, creating a stunning visual harmony. This collection includes a range of essentials: bar tools, bottle openers, peg measures, cheese knives, dessert spoons, forks, and serving spoons, making it perfect for hosting vibrant house parties.



Each piece is crafted to elevate your dining experience with a touch of natural artistry and sophistication.

NSI83 wooden platters

One of the underlying principles of the entire collection was being inspired by the beauty of nature. This goes beyond the notion of just using natural materials and ethical practices to create the product. It was ensuring that every aspect of the product truly brought out the essence of nature in the most raw and natural form possible. We personified this inspiration using a few different features:

Types of Wood: Our collection features Acacia and Mango wood. Acacia's varied tones, as seen in the Hamsa hand platter, create unique and visually striking pieces, showcasing the natural beauty of the wood. Mango wood, with its dense grain, adds an earthy, grounding feel to our platters.



Neutral Colors: We highlight the natural colors of the wood, ensuring each platter showcases different tones to reflect the wood's natural range.

Range of Collection: Inspired by nature's diversity, our collection features uniquely shaped platters, from flower-shaped to geometric designs, capturing the essence of natural forms.



Functionality: The collection includes a variety of platters for all occasions—from sectioned platters for snacks to cake stands and trays for serving drinks, each piece is designed for stylish hosting.

The main purpose of the collection was to create something that is inviting as the festive season is right around the corner. The wooden platters are designed to be both beautiful and functional, making them perfect for gatherings and celebrations, bringing people together in the spirit of festivity and warmth.

Brand vision (for these collections)

Our brand's collection embodies the captivating essence of nature, merging innovative design with the beauty of the natural world. Each piece, from intricately crafted trays to botanically inspired cutlery, reflects our commitment to quality and craftsmanship, using a fusion of premium materials such as Acacia and Mango wood, and meticulously designed metalwork. Embracing the spirit of freshness, our creations are not just decor items but functional art that elevates your living spaces and dining experiences. Designed for everyday elegance and festive upgrades, our collection celebrates nature's diversity, offering timeless pieces that transform your home into a sanctuary of beauty and sophistication.

