

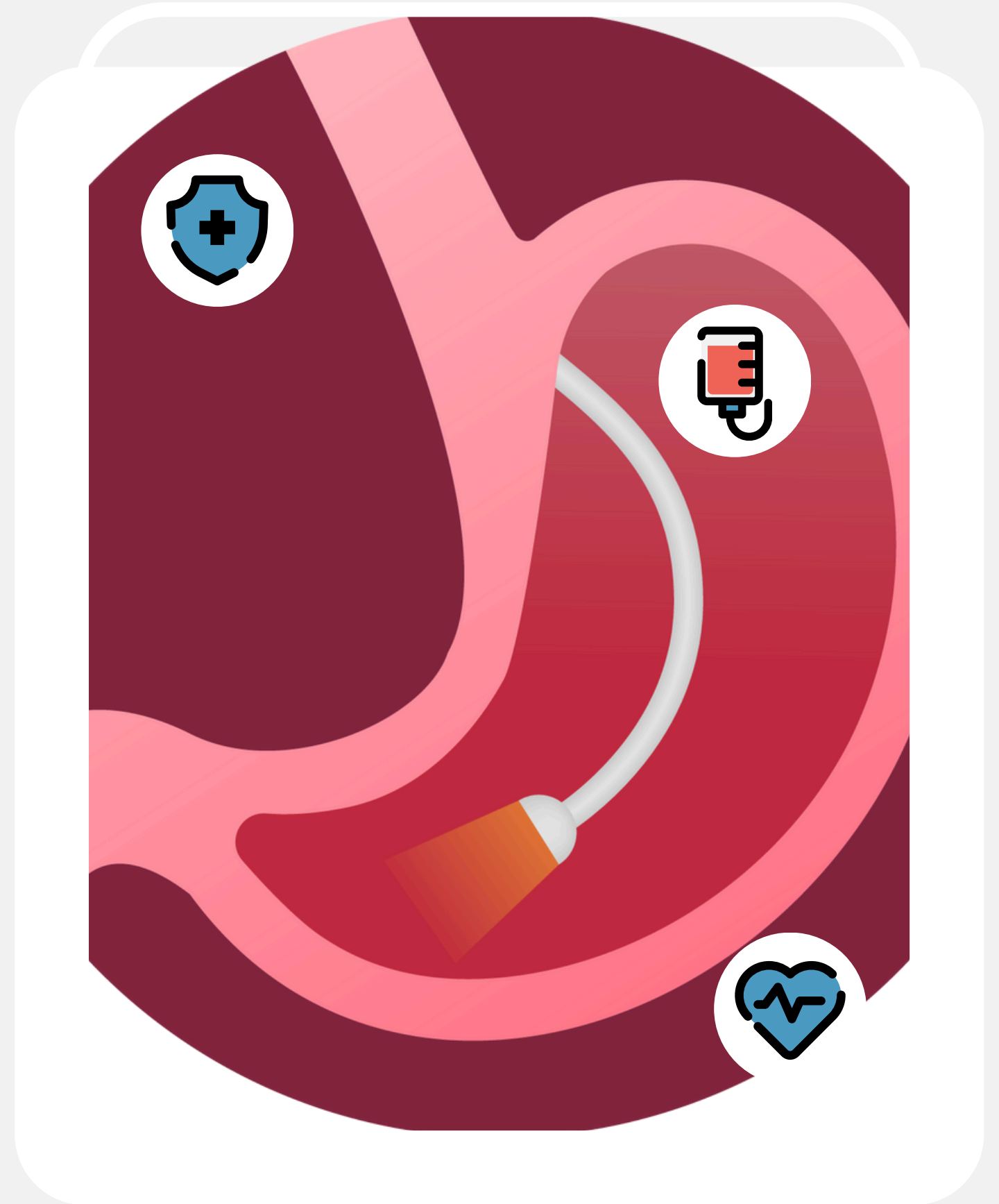
NEWER ENDOSCOPIC ADVANCES



Presented by :



Date :

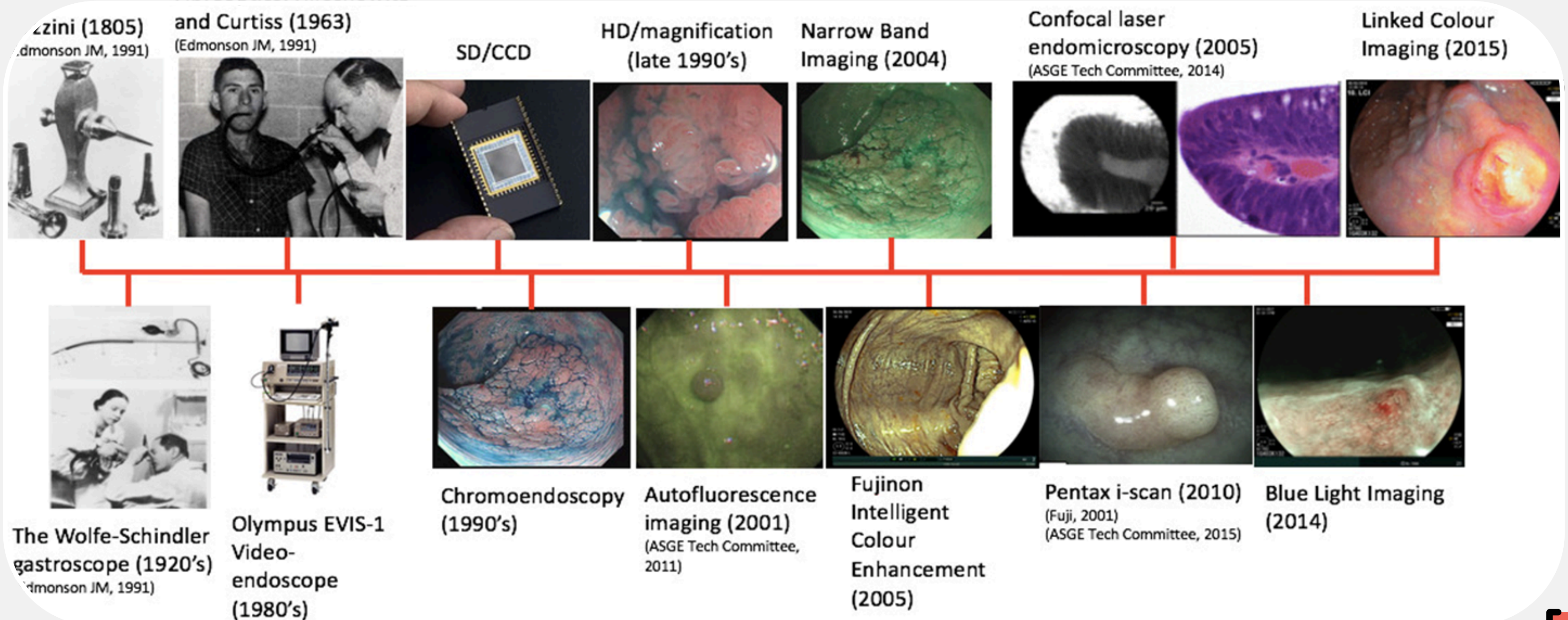


INTRODUCTION

- The term *endoscopy* refers to the Greek prefix *endo-* (“within”) and the verb *skopein* (“to view or observe”).
- Endoscopy is practical both in the diagnosis and treatment of various pathologies.
- Endoscopy development aims to assess human orifice that has not been inspected, probed, and examined over the centuries.
- Surgeons can solve any issues from examination, diagnosis, and treatment using progressive endoscopy evolution.



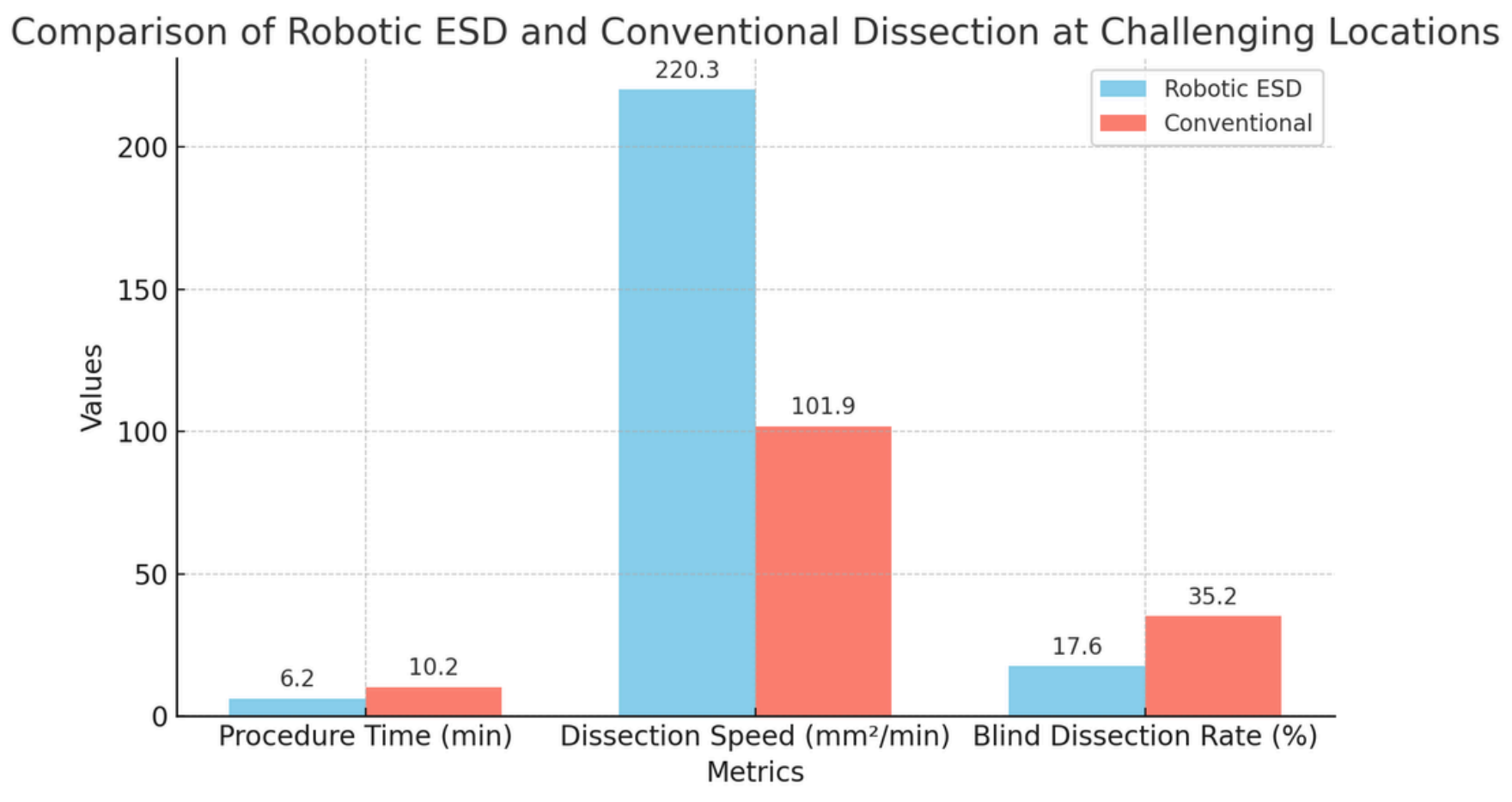
CHRONOLOGY OF ENDOSCOPIC IMAGING EVOLUTION



ROBOT-ASSISTED GASTRIC ENDOSCOPIC SUBMUCOSAL DISSECTION

Effectiveness of robot-assisted ESD for lesions situated in challenging locations within the stomach.

Methods: Robot-assisted or conventional ESD was performed at challenging or easy locations by two ESD-trainee endoscopists.



The robotic device provides simple, effective, and safe multidirectional traction for endoscopic submucosal dissection at challenging locations, thereby reducing difficulty of the procedure

CONCLUSION



- Newer advanced endoscopic imaging and intervention techniques can improve the diagnostic accuracy of various pathologies.
- Robotic endoscopy and third space endoscopy improved longevity, resolution, speed, and visualization.
- Artificial intelligence (AI) is rapidly developing in various medical fields, and there is an increase in research performed in the field of endoscopy.

THANK YOU

FOR YOUR ATTENTION

