

# THE BLACK GATSBY

GENERAL MOOD BOARD  
BY MWASA JUBILEE



# CONCEPT



Welcome to "The Black Gatsby," a celebration of love, desire, and the elegance of Black luxury. Inspired by the timeless allure of The Great Gatsby, this runway show unfolds the story of a wealthy admirer whose unwavering devotion to the person they love knows no bounds. This admirer is willing to spare no expense to express their passion, illuminating the beauty of love in all its forms.

Set in an imagined world of the Roaring Twenties, we aim to capture the essence of an era defined by glamour and sophistication. Through stunning designs, we amplify the power of feminine energy, showcasing how elegance can transform and uplift. Each piece in our collection is a tribute to the grace and strength of those who wear it, embodying the spirit of "Mother Nature draped in elegance."

As the models take to the runway, they will reflect the beauty of individuality and the richness of culture. This show is not just about fashion; it's a celebration of the radiant energy of femininity and the powerful connections we forge through love and admiration.

Join us on this extraordinary journey, where opulence meets heartfelt expression. Together, we'll explore the magic of desire and the breathtaking beauty of feminine energy, inviting everyone to witness a moment where love and luxury intertwine seamlessly.



# STYLING



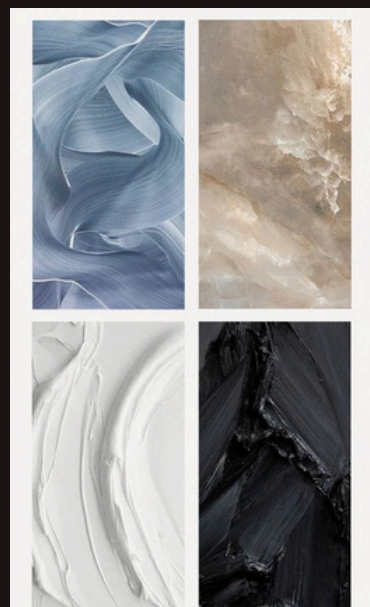
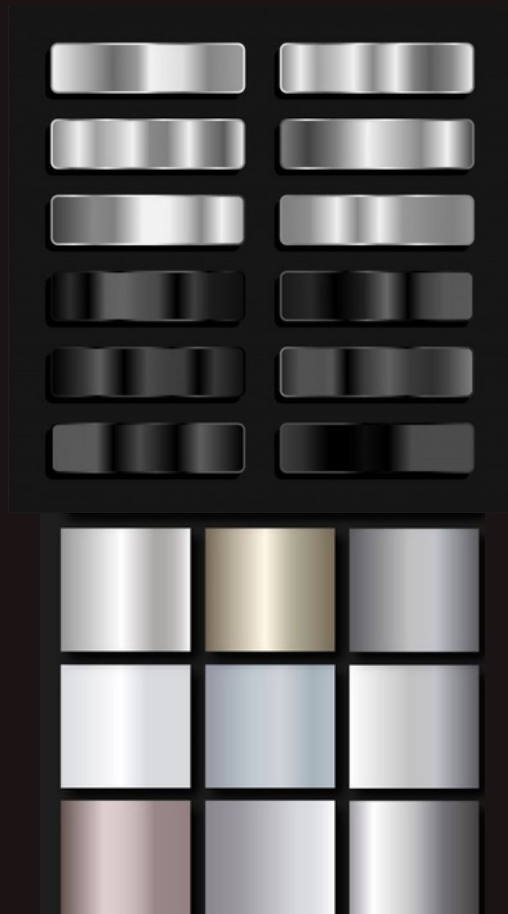
For our heeled walkers, the theme "Mother Nature draped in elegance" comes to life in a breathtaking way. We'll feature sparkling attire and stunning jeweled African pieces that celebrate the radiant power of feminine energy. Each outfit will be carefully curated to reflect the strength and beauty of those who wear it, ensuring that every model shines as a beacon of elegance.

For our flat-bottomed walkers, we will embrace a clean and cut look that embodies elegance and sophistication. Each model will showcase a tailored silhouette, while a select handful will wear bold, colorful pieces that highlight the beauty of cultural diversity. These vibrant designs will signify how a polished appearance can transcend boundaries, allowing each model to express their unique identity while maintaining an air of grace.

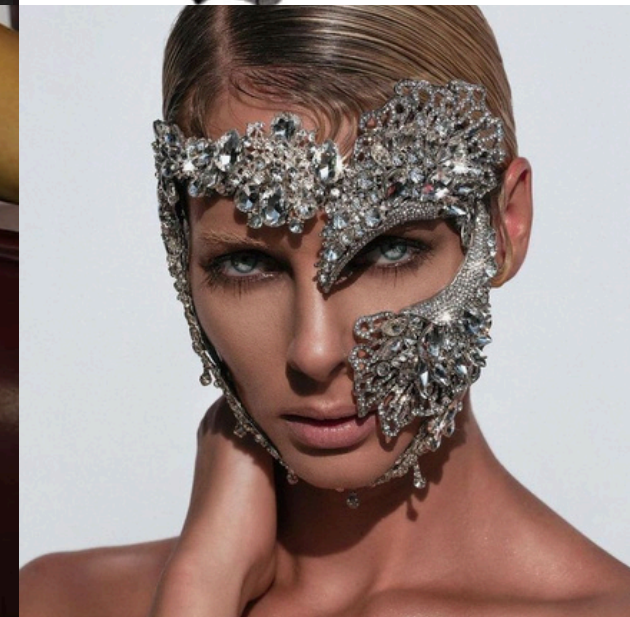
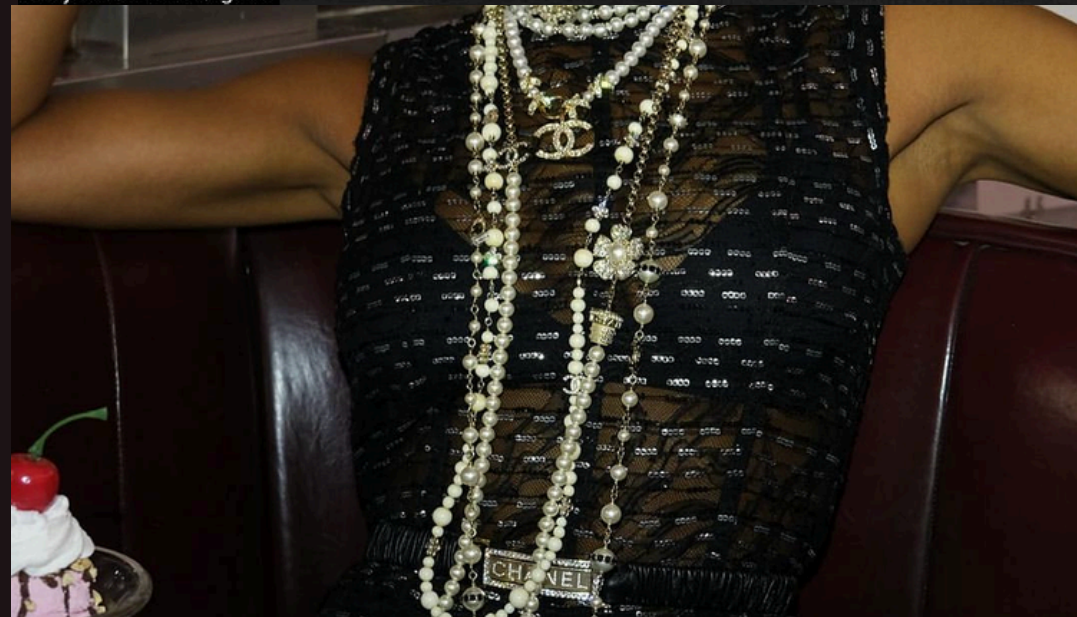




# COLOUR PALETTE



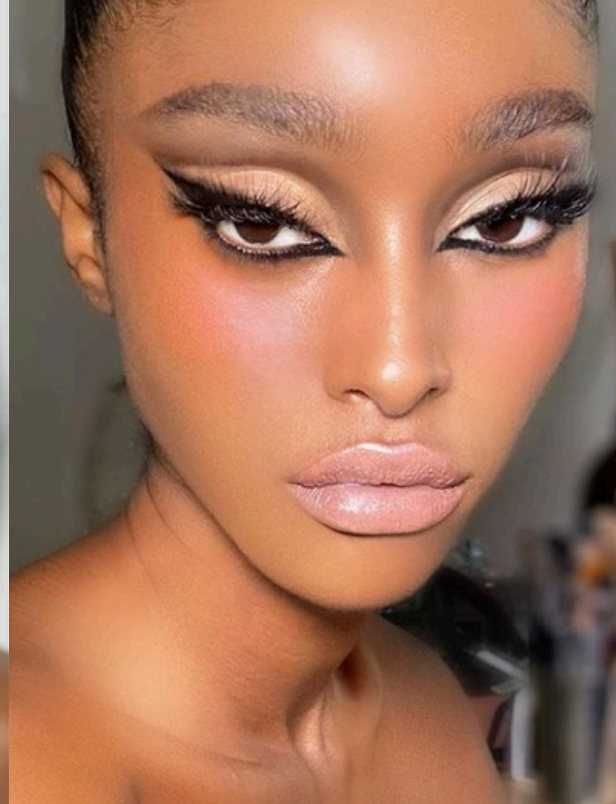
# ACCESORIES



Emphasis should be put on accessorization as it is the key to bringing out the roaring 20's feel.

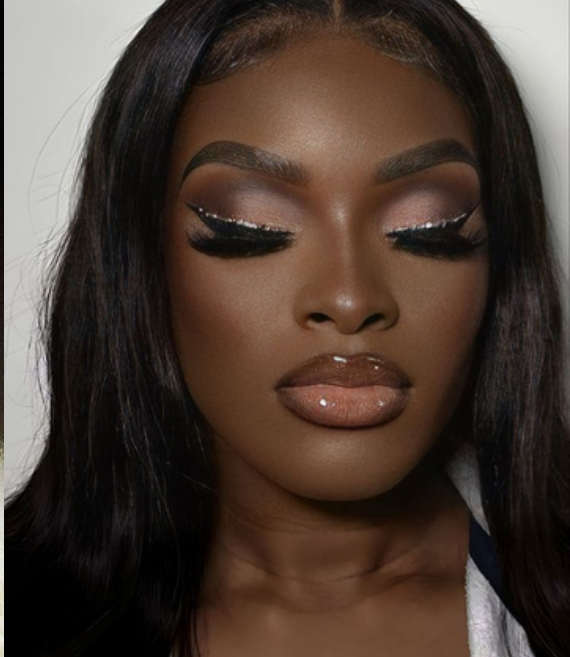


# MAKEUP



## Makeup keywords

DARK GLAM  
SOFT GLAM  
CHROME  
METALLIC



In "The Black Gatsby," bold makeup is essential for amplifying the seductive essence of our models. Striking red lipstick symbolizes confidence and allure, drawing attention and embodying passion. Complemented by dark, smoky eyes, the look adds depth and mystery, inviting the audience into a world of intrigue. This combination creates a captivating balance, celebrating the multifaceted nature of feminine beauty. Ultimately, these makeup choices enhance the models' presence on the runway, showcasing how makeup can elevate the narrative of the show.



# HAIR



For "The Black Gatsby," we envision elevated, high-end creative hairstyles that exude elegance and sophistication. Each stylist will have the freedom to explore unique designs, ensuring that the hair complements the overall aesthetic of the show while enhancing the models' beauty.

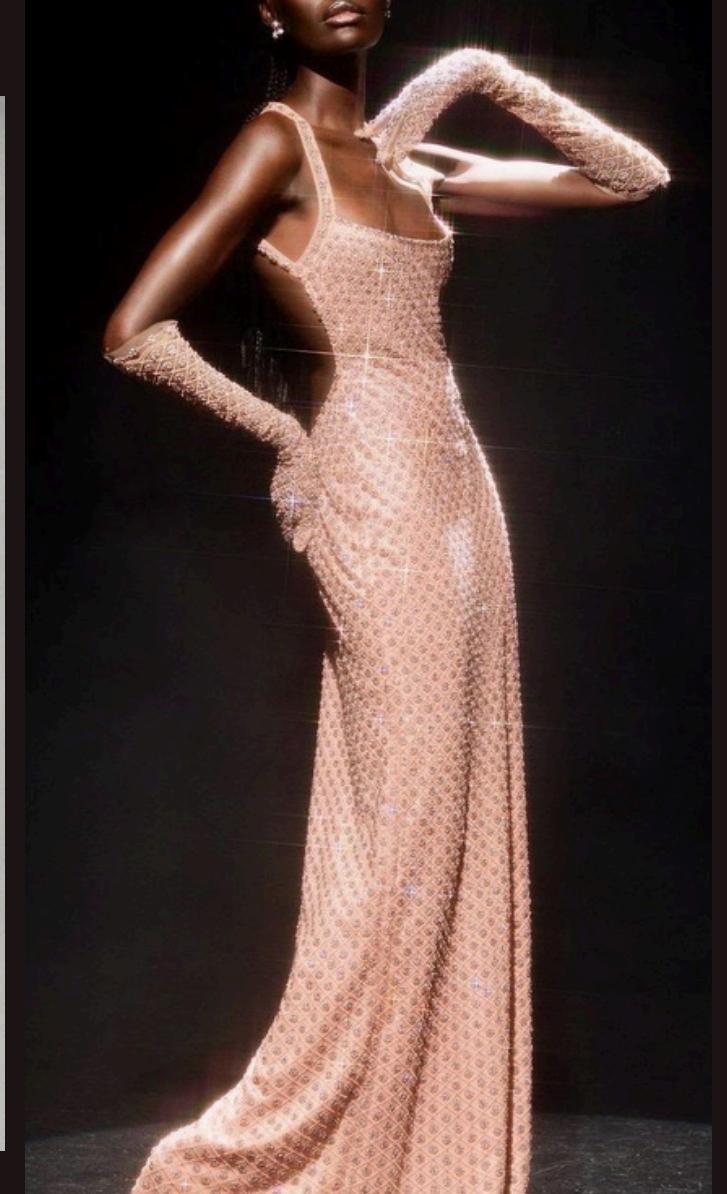
Whether it's intricate updos, sleek bobs, or bold, avant-garde styles, the focus will be on creativity that reflects glamour and sophistication. These hairstyles will not only accentuate the individual looks but also embody the elegance and grace of feminine energy. The goal is to create a harmonious blend of fashion and artistry that leaves a lasting impression on the audience.



# POSES

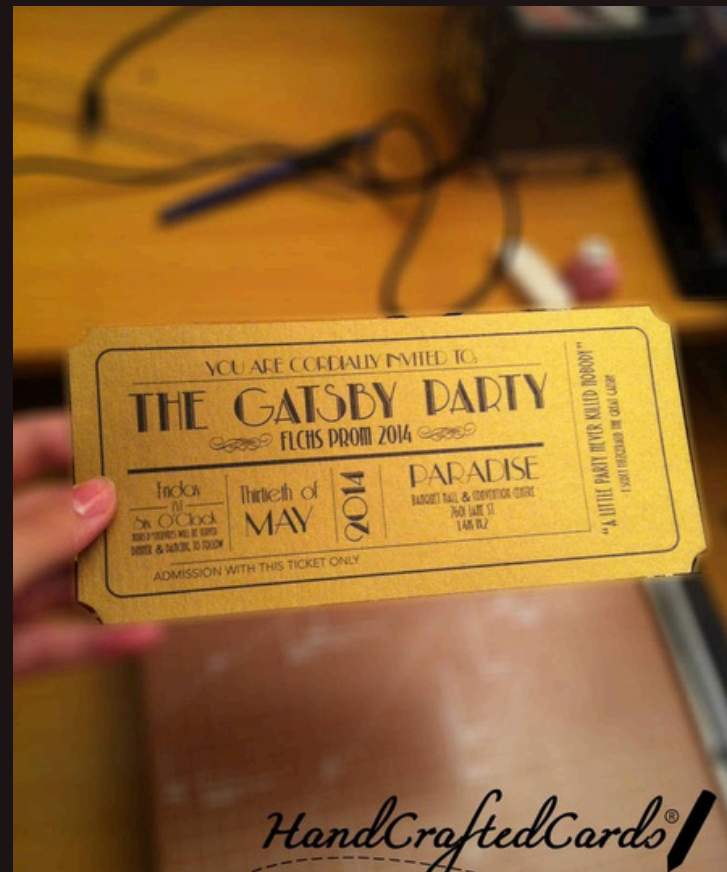
The art of posing is vital in conveying themes of adoration and allure. Each pose should be carefully crafted to reflect deep emotions, capturing the essence of longing and admiration. Models will adopt stances that are both captivating and expressive, drawing the audience into a narrative that evokes curiosity and intrigue.

The poses should leave viewers mesmerized, sparking a sense of wonder about the relationships and emotions being portrayed. By incorporating angles that suggest intimacy, strength, and elegance, we aim to create a visual language that communicates profound connections. This interplay of poses will not only enhance the aesthetic of the show but also challenge the audience's perceptions, inviting them to interpret the feelings and stories behind each model's expression. Ultimately, the goal is to craft a captivating experience that keeps the audience engaged, leaving them intrigued and slightly confused, as they navigate the layers of emotion and beauty unfolding on the runway.





# EVENT SETUP



PICTURE A GLAMOROUS GREAT GATSBY WEDDING BUT  
AS A RUNWAY SHOWCASE. A RED CARPET AND SPECIAL  
TICKETS ARE SUGGESTED.



THE END.