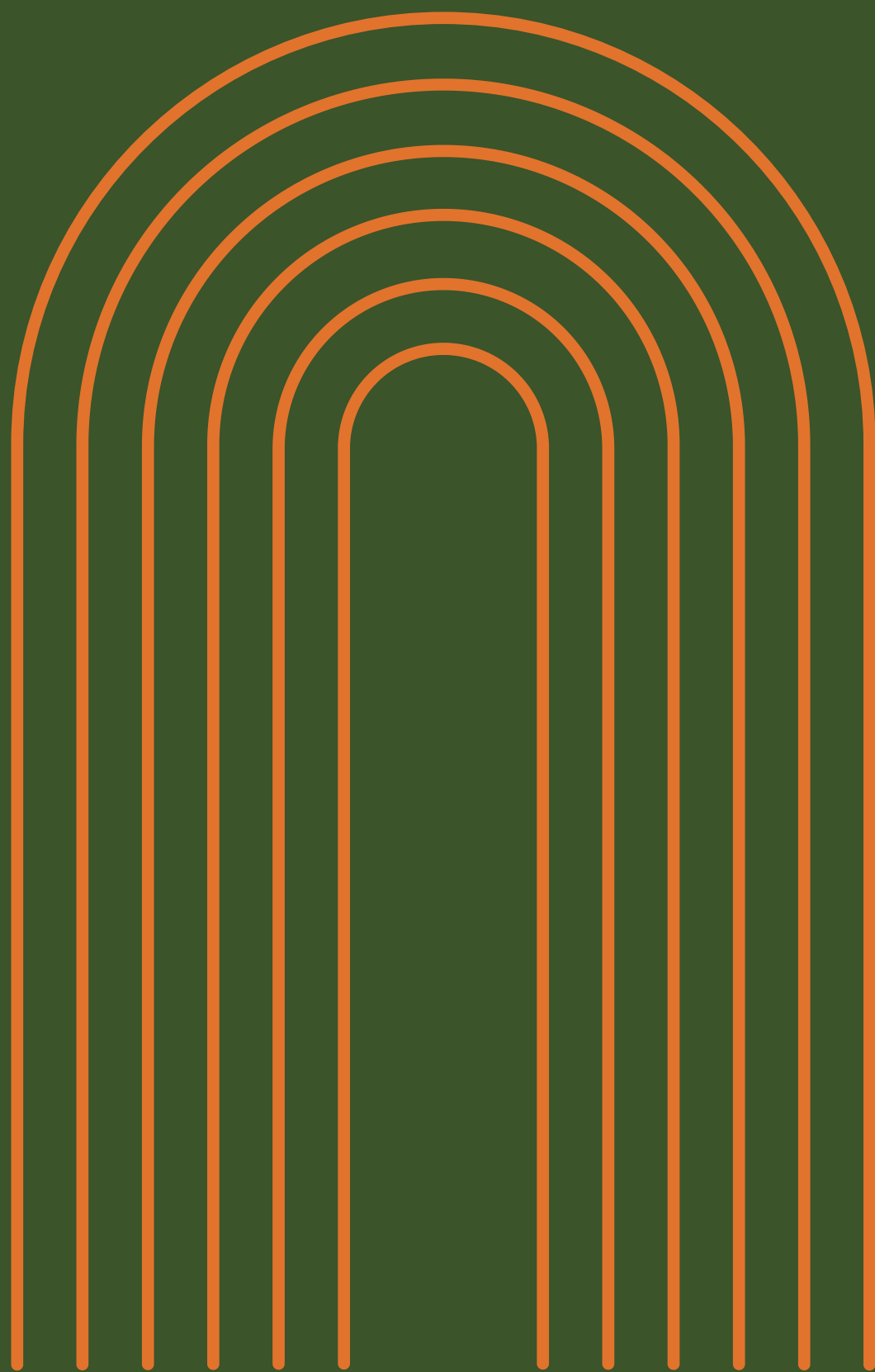


# ETHEREAL



She is  
Enigmatic



She is  
Aureate

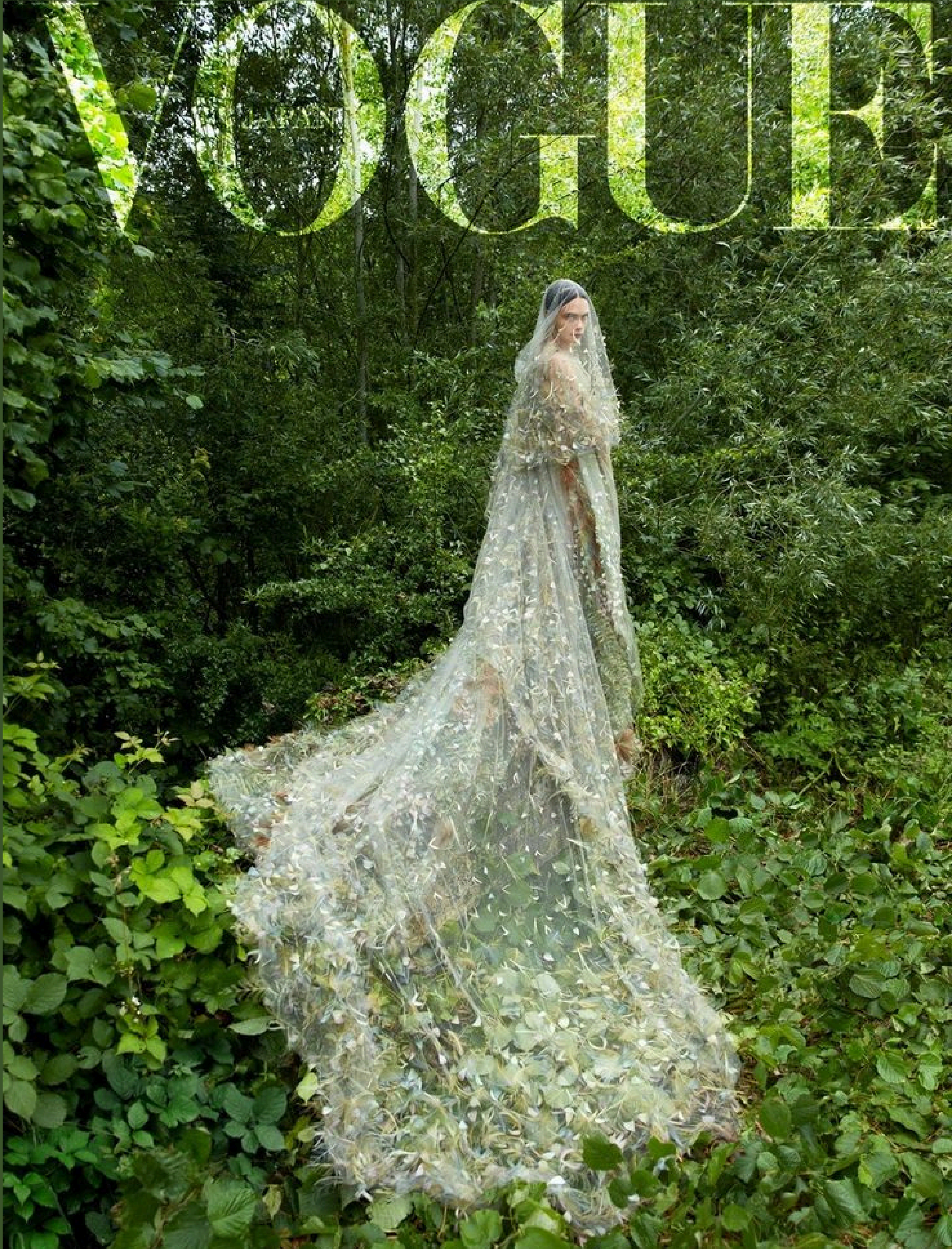
**SHE IS ETHEREAL**

Ethereal adjective

/ɪˈθɪəriəl/

Extremely delicate and light in a way that seems too perfect for this world; otherworldly, heavenly.

The shoot feels like a quiet celebration of the muse's connection to nature, as if her energy is intertwined with the Earth itself. She's surrounded by soft, natural elements – the wind gently playing with her hair, the sunlight filtering through leaves, casting dappled patterns across her skin. There's an effortless flow between her and the world around her, as if she's in tune with the rhythms of the earth, drawing strength and peace from it. The whole vibe is laid-back but deeply spiritual, as though she's both grounded and free, embodying this calm, natural femininity with a quiet, confident queerness.



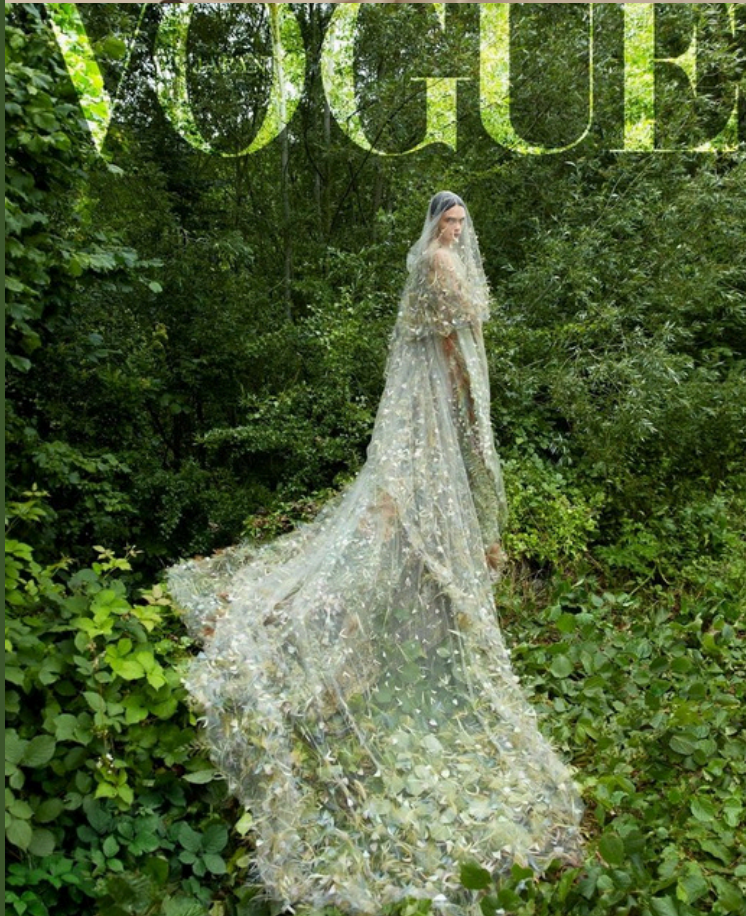
She is  
Enigmatic



She is  
Aureate



# STYLING



The flowy white or cream dress plays a vital role in capturing that soft, beautiful feminine energy you're looking to portray in this shoot. The light, airy fabric mirrors the fluidity and freedom of her spirit, while the soft, neutral tones evoke purity and grace without overpowering her natural presence. The way the dress moves with the wind enhances the feeling of her being connected to nature, like she's one with the elements around her. Mesh details add a subtle, ethereal touch, giving the look a modern, delicate edge. It's a symbol of both fragility and strength, a visual representation of how femininity can be both gentle and powerful at once.

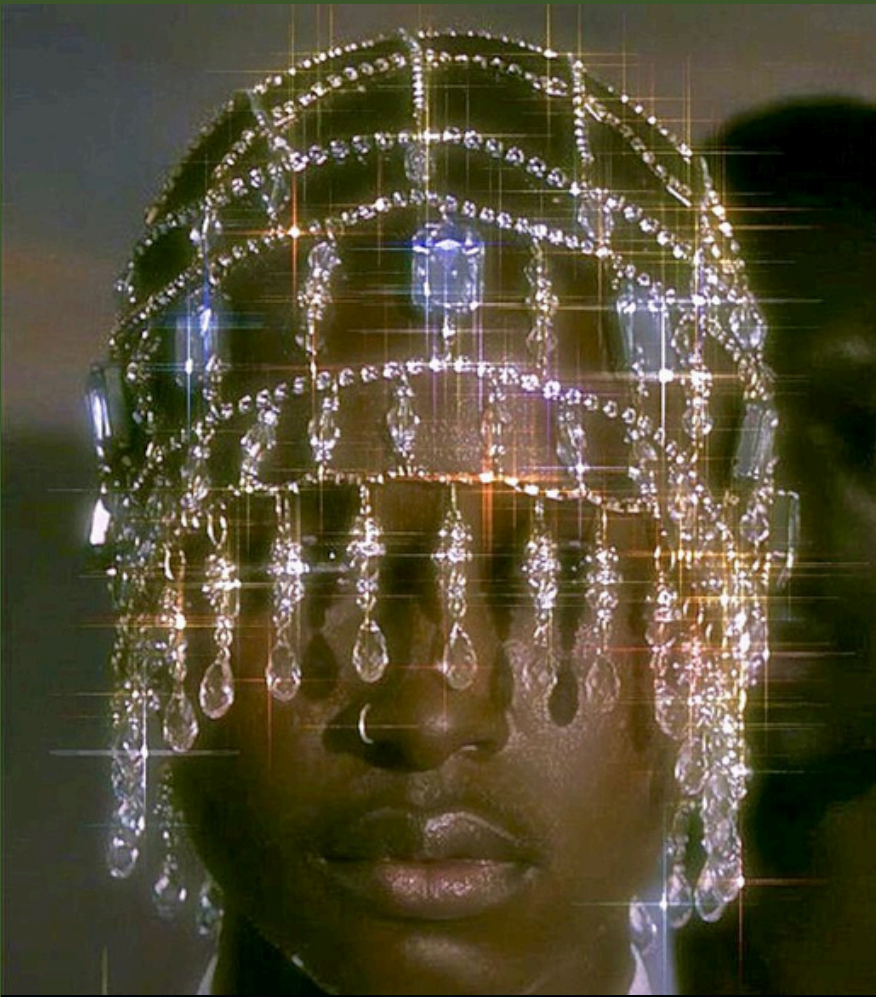
She is  
Enigmatic



She is  
Aureate



# Hair



Incorporating a bedazzled head dress or veil into the shoot would elevate the entire look, adding a regal and almost celestial touch to the scene. The shimmering stones or crystals in the headpiece would reflect light, enhancing the ethereal quality of the setting and drawing attention to her as a radiant focal point. The veil, delicately draped, would introduce a layer of mystery, softening the edges of the shoot with a dreamlike effect. It would symbolize both protection and liberation, framing her face in a way that blends vulnerability with empowerment.

The head dress or veil, with its sparkle and delicacy, would complement the flowy, mesh-accented dress, creating a cohesive balance of beauty, strength, and serenity. It all adds to the spiritual connection between her and the earth, as if the elements themselves are crowning her in her natural, queer femininity.

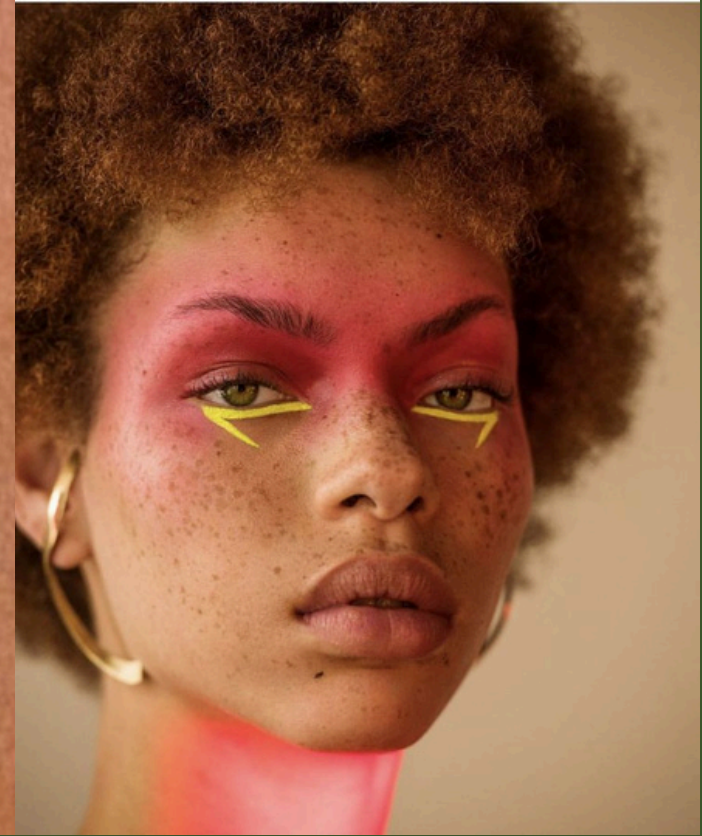
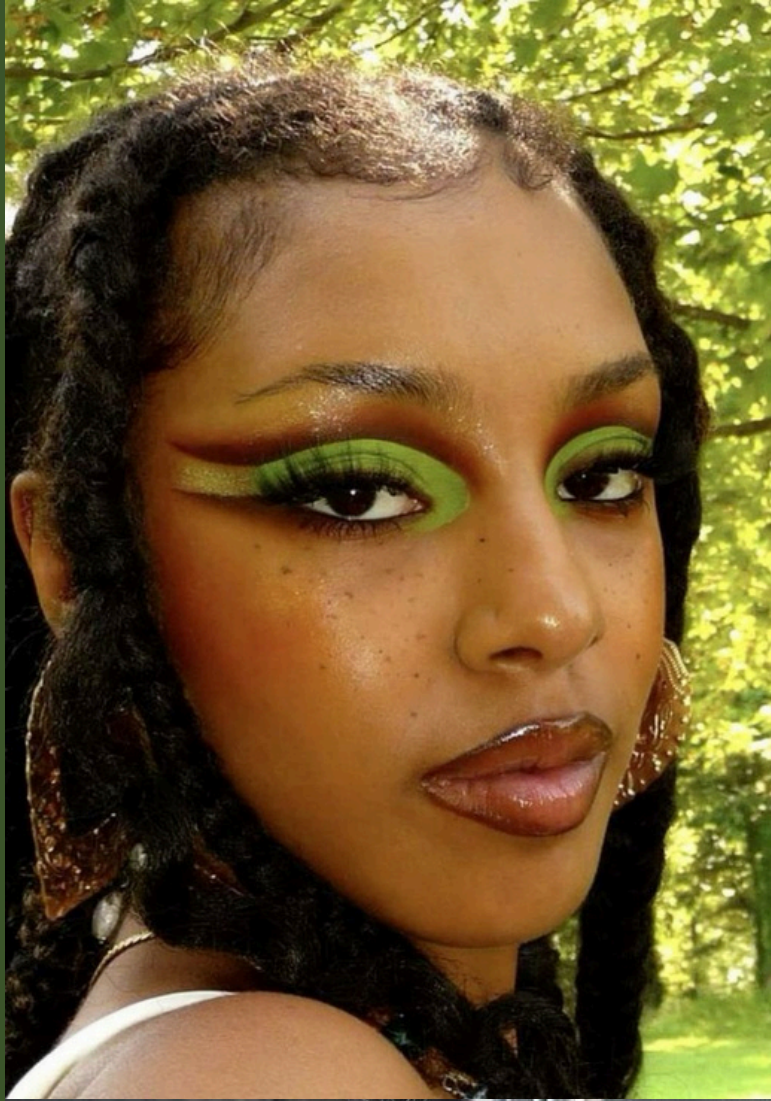
She is  
Enigmatic



She is  
Aureate



# MAKEUP



For makeup segment of the shoot, a colorful makeup look will perfectly complement the natural, flowy vibe by adding a vibrant yet delicate layer to her overall presence. Bright, pastel tones or soft pops of color on the eyes or lips can reflect the energy of flowers blooming in nature, symbolizing her individuality and inner vibrance. The playful, yet refined makeup will contrast beautifully against the soft white or cream dress, bringing attention to her face and highlighting her expression of queer beauty in a subtle but meaningful way.



# POSES



Natural, grounded poses will be essential for this shoot, as they emphasize a deep connection to the environment and embody the serene energy you want to convey. Poses such as gently leaning against a tree, sitting in soft grass, or extending her arms as if embracing the wind will highlight her grace and fluidity.

These relaxed stances allow her to express freedom and tranquility, reinforcing the idea that she is part of the natural world. Moments of interaction, like running her fingers through grass or allowing leaves to fall around her, create a harmonious blend with the elements. The overall effect will be a visually striking representation of beauty that feels both grounded and ethereal, capturing the essence of her spirit in a way that resonates deeply with viewers.

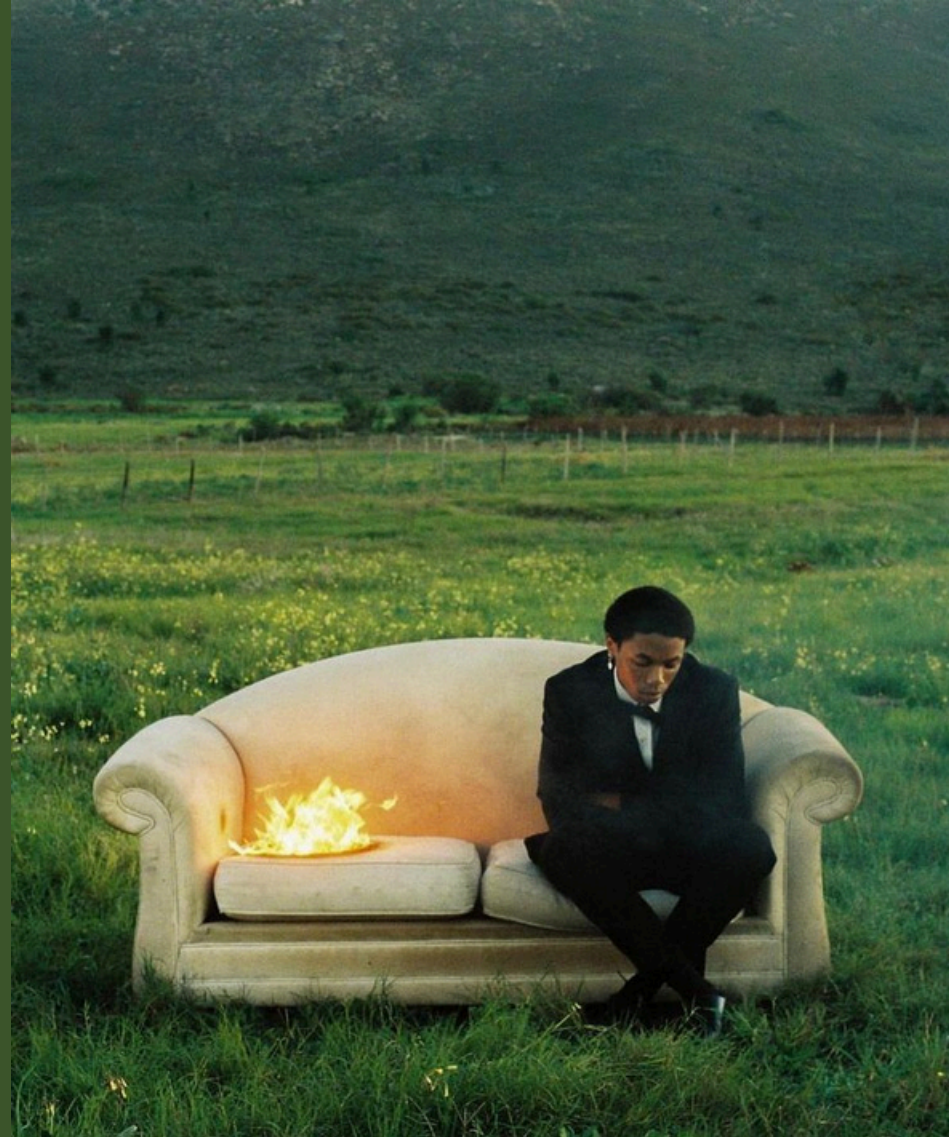
She is  
Enigmatic



She is  
Aureate



# LOCATION& SETUP



Shooting near a creek or in a field will significantly enhance the overall atmosphere and aesthetic of the photoshoot. The gentle sounds of flowing water create a serene backdrop, adding an auditory layer that complements the visual beauty of the setting. The creek can serve as a metaphor for fluidity and connection to nature, symbolizing both the calm and dynamic aspects of her identity.

In a field, the open space and natural light can highlight her connection to the earth, allowing for expansive poses that convey freedom and joy. The lush greenery or wildflowers can serve as vibrant accents, bringing color and life to the images while framing her in a soft, inviting environment. Both settings evoke a sense of tranquility and authenticity, making it easier to capture her natural beauty and spirit. Ultimately, these locations will help create a harmonious interplay between her and the surroundings, reinforcing the themes of femininity and queerness in a visually striking way.

She is  
Enigmatic



She is  
Aureate