

SUMMER 2024

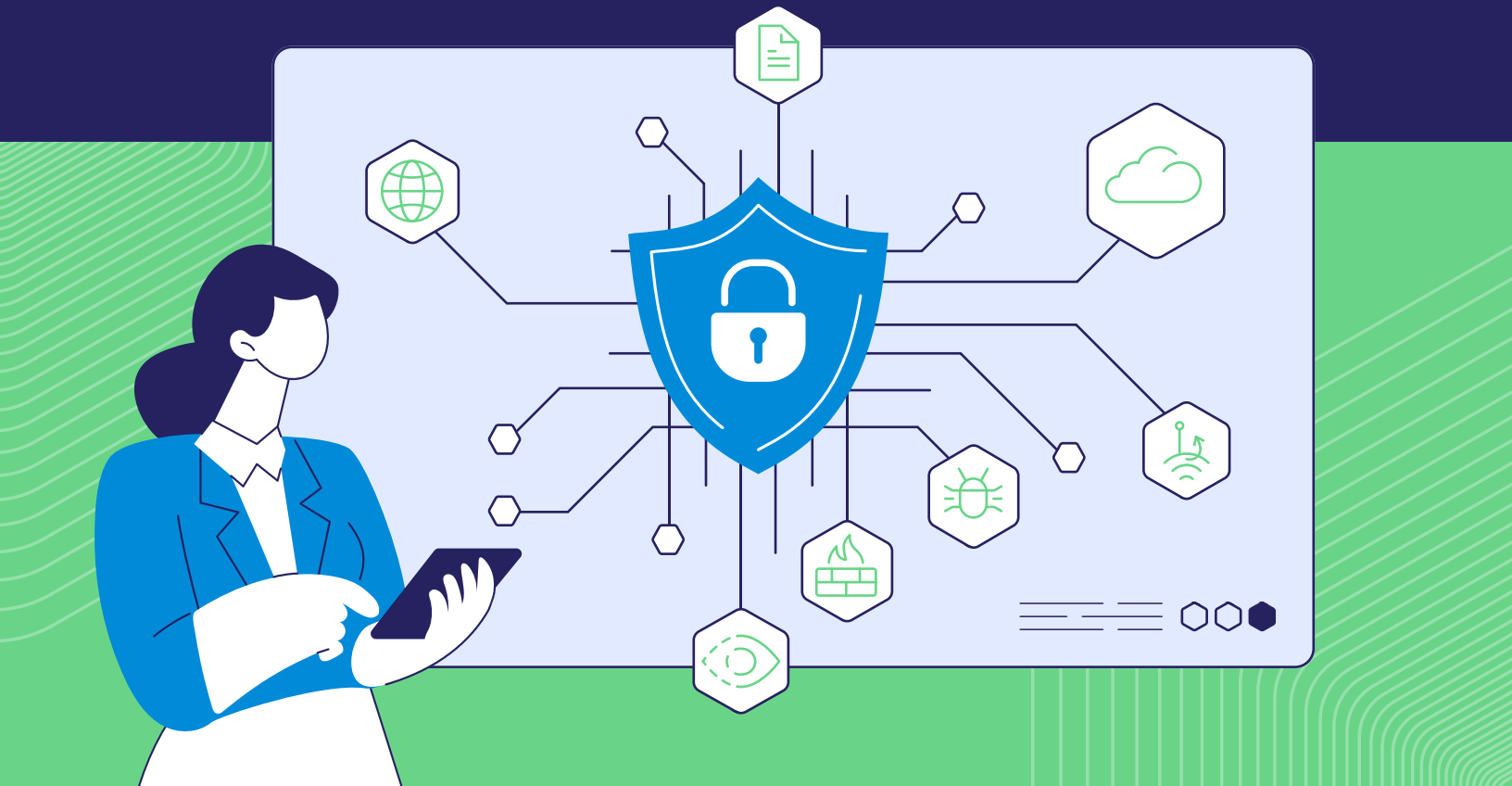
# Coro **vs** CrowdStrike

A win for **stability, agility** and **modularity**

CrowdStrike offers a point solution focused on **Endpoint, Identity, and Cloud**, primarily **designed for large enterprises**.

**Coro stands out with its modular and scalable design**, which is ideal for small and medium businesses. Coro's approach allows for tailored, **cost-effective security that grows with the business**. As the world's first modular cybersecurity platform, Coro covers user, **endpoint, email, network, cloud, and data protection, all through a single dashboard, endpoint agent, and data engine**.

**By leveraging intelligent automation**, Coro lets you offload most cybersecurity tasks, **significantly reducing the IT workload and ensuring rapid response and remediation**. Coro's platform is user-friendly and highly efficient, perfect for smaller organizations.





# Coro vs CrowdStrike

Product & Features		
<b>Intended Market</b>	Small and medium-sized businesses and small enterprises.	Large corporations and enterprises.
<b>Security Coverage</b>	Complete modular cybersecurity platform covering end-to-end workspace security needs.	Covers endpoint, cloud, and identity only. Lacks a comprehensive native workspace security suite.
<b>Brand Recognition</b>	Strong presence in the US, and growing in LATAM and EMEA. Founded in 2014 and recently closed Series D.	Global brand recognition.
<b>Specialized Solution</b>	Interchangeable security modules cover the user, endpoint, email, network, cloud, and data protection and governance.	Emphasis on endpoint security.
<b>Optimization</b>	Designed for lean IT teams with limited resources. The platform reduces IT workload by automatically resolving over 95% of security tickets without human intervention.	Designed for large Security teams with cybersecurity expertise and human resources to maintain security stacks.
<b>Security Expertise</b>	Designed for IT teams tasked with managing security. No security expertise is needed to operate the platform.	Intended for professional security experts, requiring cybersecurity expertise to configure and manage.
<b>Ease of Use</b>	Customer-centric approach with heavy investment in UX to ensure easy installation and management, requiring no expert knowledge to operate.	Enterprise product with extensive features and functionalities. Intended to be operated by security professionals. Installation and management are likely to be difficult for those without security expertise.
<b>Automation Capabilities</b>	AI-powered automation relieves IT teams of over 95% of their day-to-day operations.	Reliance on trained professionals to take action using custom playbooks and script-based mitigation for remediation. Automatic ticket resolution is not available.
<b>Customizability &amp; Scalability</b>	The world's first modular cybersecurity platform, designed for optimal customizability and intended to scale with a business as its security needs change.	Flexible platform covering a wide range of operating systems, and integrating with a wide range of tools.

# Coro vs CrowdStrike

Product & Features		
<b>Integrated Product</b>	The single endpoint agent, single dashboard, and a single data engine provide a unified experience, requiring no integrations with external security products. All aspects of the product are natively developed, managed, and serviced by Coro.	The dashboard consists of multiple integrations requiring complex configuration. Certain features and services added to the endpoint agent are provided by third-party vendors.
<b>Dashboard Look &amp; Feel</b>	Dashboard design mimics IT environments to make it familiar and accessible for the product's target users. Design is 'clean' and minimal, the UX is intuitive to IT professionals.	Dashboard suffers from information overload. Navigation is challenging and requires a high learning curve.
<b>Endpoint Agent Features</b>	A single agent for all 14 security modules. Lightweight with low footprint, and low impact on machine performance and low disruption to business continuity.	Lightweight with low impact on performance and low disruption to business continuity. Since the vendor does not provide network-related security, a 3rd party vendor is required, including an additional agent to be installed and managed.
<b>Workspace and Endpoint</b>	Customizable: users choose stable or beta agent, whether to enable automatic updates, and whether to do so for all or only select devices.	Staged sensor rollout process that starts with dogfooding internally at CrowdStrike, followed by early adopters. It is then made generally available to customers.
<b>Agent Deployment &amp; Management</b>	Gradual rollout, beginning with dogfooding; designed to contain unexpected issues and prevent them from spreading across multiple endpoints.	Agent updates automatically, eliminating manual workload and ensuring all endpoints are updated.
<b>Data Quality</b>	In-depth analysis of threats detected, including telemetry and advanced AI-lead forensic analysis, producing contextual and actionable insights.	Data collected in large quantities from 1st and 3rd party data sources, integrated threat intelligence and raw endpoint telemetry.
<b>Native Development</b>	Full range of product features and services are developed natively by Coro, with no reliance on third-party providers.	Certain agent-embedded features are offered through third-party providers.

# Coro vs CrowdStrike

Product & Features		
<b>OS Support</b>	Windows, macOS	Windows, macOS, Linux
<b>Threat Intelligence</b>	Reliable threat intelligence with targeted out-of-the-box configurations designed to identify risks unique to your business.	Integrated threat intelligence specifically tailored for threats encountered on endpoints.
<b>Endpoint Security and EDR Features</b>	<p>Robust next generation antivirus. EDR includes User Behavioral Analytics (UBA) and advanced threat protection to detect malicious scripts and file-less attacks.</p> <p>Alerts on threats and suspicious activity, device backup and rollout, as well as 1-click-automatic remediation for quick response.</p>	Full and robust Next generation antivirus. EDR includes anti-malware, User behavioral Analytics (UBA), file-less attack detection, alerts on threats and suspicious activity.

## Pricing & Bundles

<b>Pricing</b>	Low retail price designed for budget-conscious SMBs.	High retail price designed for large enterprises.
<b>Suite Options</b>	Each security module can be purchased individually or as part of security bundles.	Features not included in the core endpoint security and EDR bundles are offered at an extra cost, sometimes exceeding the price of the original bundle.
<b>Managed Services</b>	<p>A variety of suites allow flexibility and cost efficiency.</p> <p>Additional support available on a per-module or per-bundle basis.</p>	<p>SMB / SME bundles offer a minimal feature set for security coverage.</p> <p>End-to-end service across endpoint, identity, and cloud to conclusively remediate attacks.</p>

Join the thousands of companies trusting Coro with their cybersecurity!

[WATCH A DEMO TODAY](#)

[START A FREE TRIAL](#)

