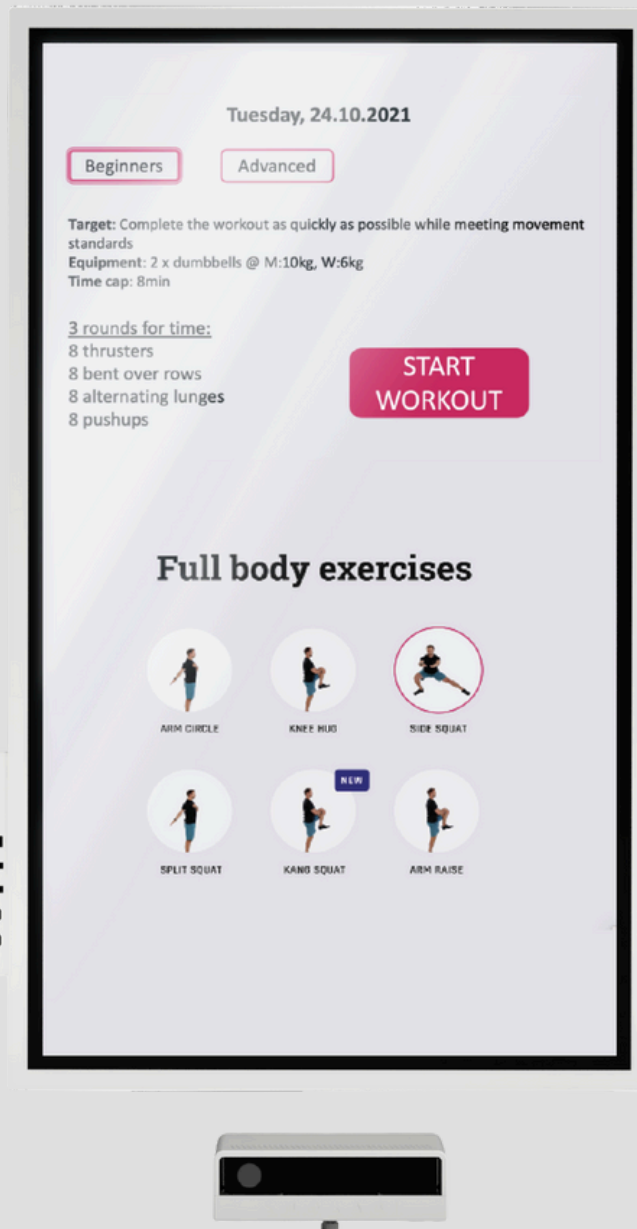


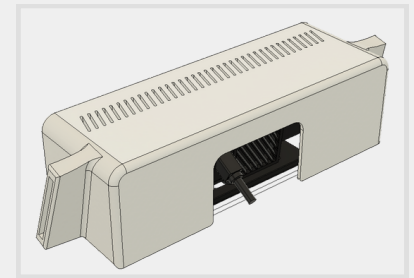
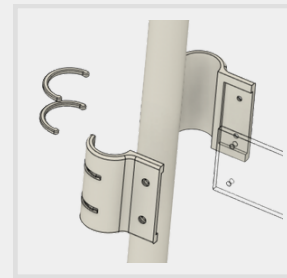
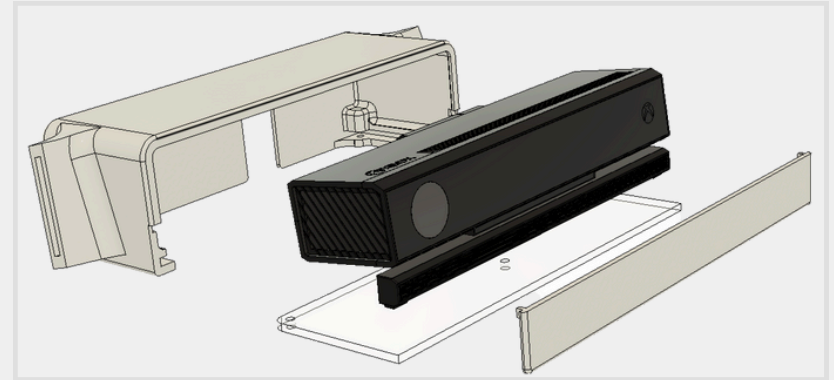
Shosabi

2021



Shosabi is an **AI-powered personal trainer for gym attendants**. The project was started by Mitsubishi Chemical Holdings and involved several developers and engineers worldwide. As a freelance designer, **I was responsible for designing and prototyping the hardware part.**

Shosabi



The device uses a Kinect to capture a 3D image of the trainee and reflects it in training software that coaches their exercises.

My task was **designing a compact, adjustable housing** to hold the Kinect with the monitor (Samsung Flip 2).

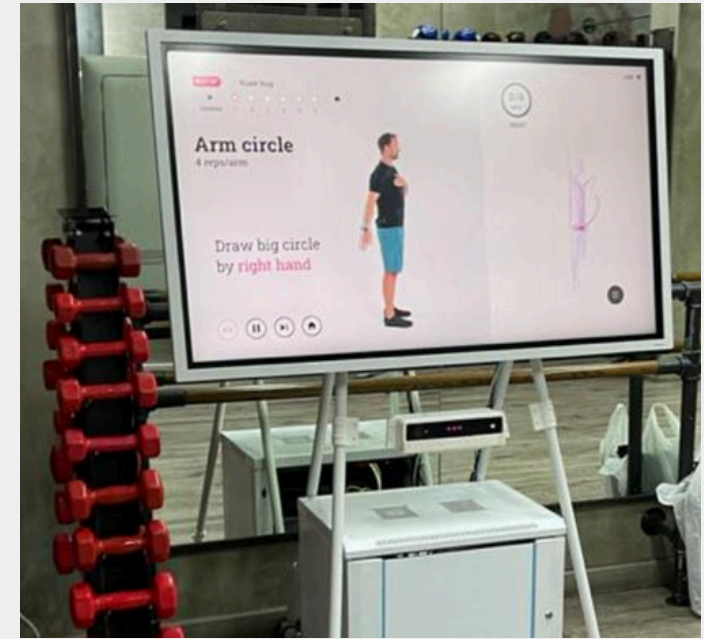
I used **3D printing and laser cutting** to produce the prototype.



Shosabi

The prototype was placed in a local gym for testing.

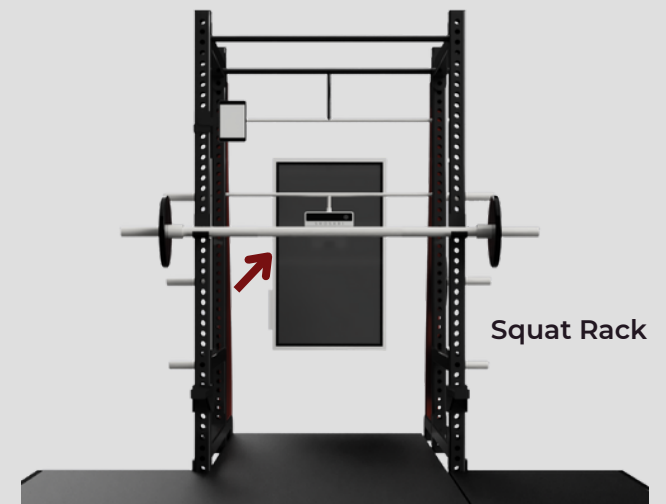
After that, I produced **renders** of the model with multiple gym tools using **Fusion 360** to create a proposal for integrating the product with various devices.



Monitor



Treadmill



Squat Rack