

Burton expo debuts at Lightbox in Toronto

PAIGE WESTBROOK
COMMUNITY NEWS

Created by the Museum of Modern Art (MoMA), New York, the Tim Burton exhibition invites movie lovers to enter the mind one of Hollywood's most influential cinematographers.

Tim Burton's cryptic emphasis on life is displayed at the TIFF (Toronto International Film Festival) Bell Lightbox Theatre in Toronto. The art exhibition features over 700 of Burton's most exclusive pieces taken from studio archives, private collections and Burton's personal vault. The décor of the showroom is dark yet colourful, brightened by the various one-of-a-kind works scattered about the walls.

"I really enjoy Tim Burton's movies and I've always been a fan of his work ever since I was little when I saw the *Nightmare Before Christmas* in theatres, he's always been very artistic and seeing that he's always been this way, always been creative and kooky," said Veronique Taylor, a longtime fan of Burtons work.

From *Beetlejuice* to *Nightmare Before Christmas* to Burton's most recent *Alice in Wonderland*, the exhibition explores his career from his high school days long before Disney recognized his talent.

The exhibition allows fans to get up close and personal with Burton's creative process through a visual experience of his growth as an artist. Through screenings, workshops and the art exhibit, visitors gain valuable advice flowing from the mind of a moviemaking genius.

"You get a deeper appreciation of his creativity, his mind, it's not something he puts on, and it's obviously him himself," Taylor said.

"It's cool to see the work of a genius; how he really looks at life because it's crazy in comparison to everyday."

Throughout his career, Burton has released numerous films anywhere from animation, clay animation and even his own approach to realism through movies like *Big Fish* and *Mars Attacks*.

"Over the years I have watched a lot of Tim Burton's movies and they've always been so different from other directors," said Cindy Kim, fine arts student at the University of Toronto. "The imagery he uses throughout his movies portrays his personality beautifully."

The exhibit opened to the public on Nov. 26 and runs until April 17. Tickets are available for \$22.75 and can be purchased at the box office of through the Bell Lightbox online store.

Find yourself at lost and found for all misplaced items

PAUL CATAQUIAN
SHERIDAN NEWS

With the stresses of exams and final assignments weighing on students' minds, it's easy for things to be misplaced and lost.

Sheridan's lost and found, located at the security desk in the B wing between the bookstore and Tim Hortons, can help you find your lost items.

Kris Dowlathahi, site supervisor for security, says that a lot of students don't know about the school's lost and found at the se-

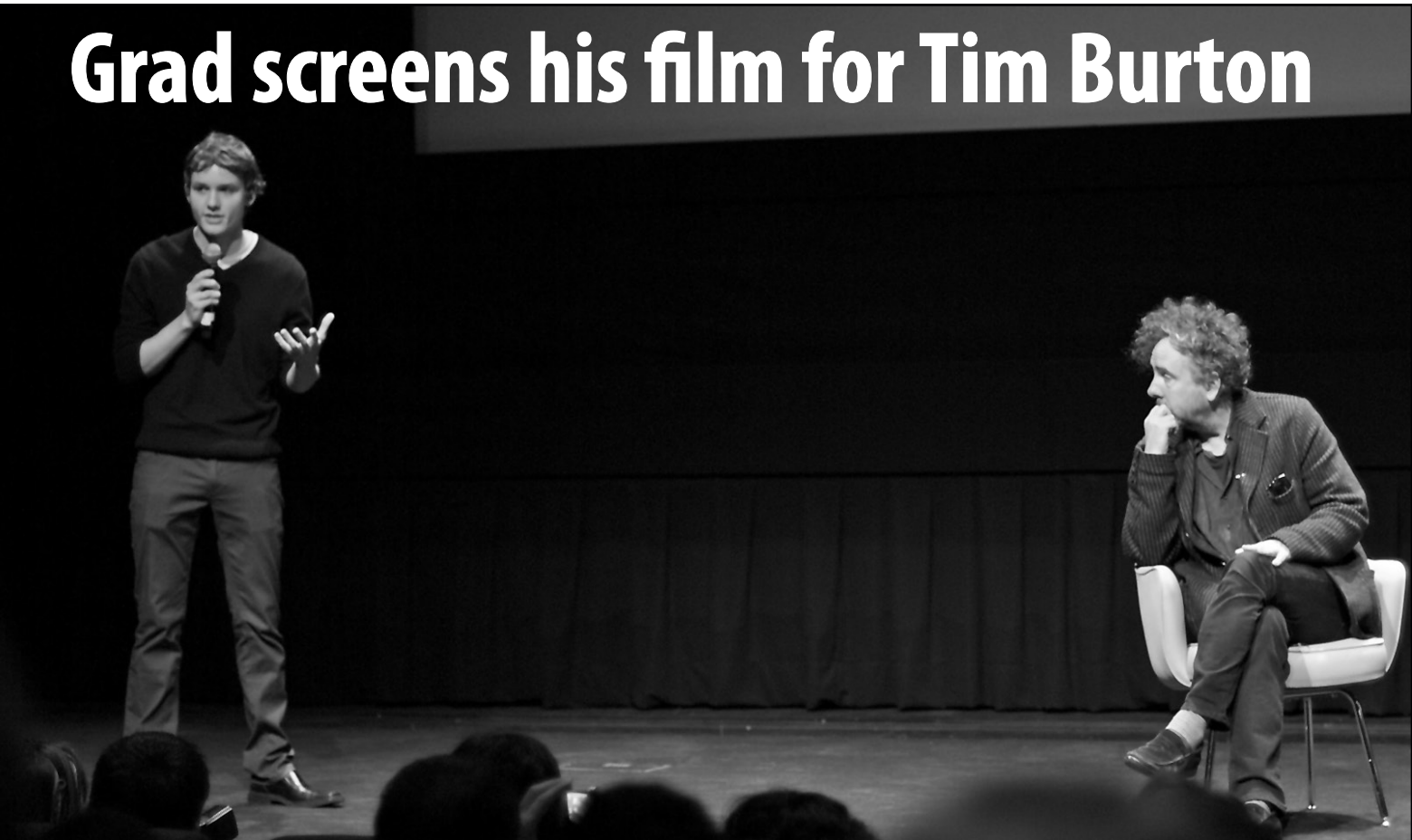
curity desk. "Students lose things all the time. There are various things that students lose like Ipods, phones, wallets, laptops, and sometimes student cards. The most commonly lost item, though, is USB flash drives."

Items that are lost should immediately be brought to the security desk. "90 per cent of the time, everything is turned over. If not picked up for a few days, we try to locate the student who owns the item. They sometimes don't even realize that they've lost something until we notify them. They don't know where

to go when they lose something," said Dowlathahi. "We make a record of the student if they are picking something up and ask them some questions to prove they are the rightful owner of the item."

Nicole Fernandes is a busy student that has not lost anything, but doesn't know where to go in case she does. "I didn't know we had one."

Dowlathahi advises to never leave things unattended and if something is lost, come to the security desk in the B-wing.



Kevin Parry (left) screens his stop motion feature, *The Arctic Circle* for an audience and legendary filmmaker, Tim Burton (right) at the Bell Lightbox theatre.

Sheridan arts-animation grad makes it to the big screen and for a very special observer

KATIE O'CONNOR
SHERIDAN NEWS

Kevin Parry is one lucky guy. He's a recent Sheridan graduate from the Bachelor of Applied Arts-Animation program who just received an opportunity of a lifetime. On Nov. 23, he had his most recent film, *The Arctic Circle* screened at the Bell Lightbox theatre in Toronto for an audience and legendary filmmaker Tim Burton.

Organizers at the TIFF Bell Lightbox Theatre had the final say of which students and their films

would be chosen.

Parry said he found out about the opportunity only at the last minute.

"I was actually contacted by Sheridan a few days before the event when they told me they were going to submit my film," he said. "Since my film is stop-motion animation and kind of has an eerie feel to it, it fit right with the whole Tim Burton vibe. I really appreciate the support they gave my film to be part of the event."

Parry admits he was nervous

about the creative genius behind movies like *Edward Scissorhands* and *The Nightmare Before Christmas*.

"I was extremely excited. Who wouldn't be? It's Tim Burton," he said. "I didn't know what to expect. It wasn't until the morning of the event that I found out exactly what was going to take place. Pretty much for the days leading up to the event, I was having anxiety attacks every few minutes."

Burton complimented *The Arctic Circle* on its design and described it as: "It's like a cross between *2001: A Space Odyssey* and *Rudolph the Red Nose Reindeer*."

Parry said how happy he was about the great feedback he received from Burton.

"At the time I was thinking to myself, 'don't make a fool of yourself', so it was tough to take in what he was saying," he said. "He said some nice things, so I'm happy as I could be."

Parry said meeting the Hollywood icon was an honour.

"The best part was assurance that he had sat and watched the full film," he said. "I thought to myself how impossible it would be to get Tim Burton to watch your student film, so I consider myself extremely lucky."

Christopher Walsh, professor in the Bachelor of Applied Arts Animation program, taught Parry in various courses but primarily during his third year with the stop motion course.

Walsh says the screening may be just the thing to launch Parry's career.

"It was obviously great exposure for Kevin, his film and for Sheridan's stop motion films in general," he said. "I understand Kevin is being contacted by some pretty well-placed people in the industry, due in no small part to the exposure the Burton event provided him."

Walsh also praised Parry's film.

"It's exceptional in every way: story, character designs, animation, visual effects, sound and music," Walsh said.

"Pulling all of these components together into a finished piece that can effectively communicate the intended message is hard for veteran animators."

Kevin Parry is currently working at Guru Animation Studio in Toronto.

For more information, visit Kevin Parry's blog at kevinbparry.blogspot.com to watch *The Arctic Circle* and the Tim Burton encounter.



Co-director Tim Burton on the set of his 2005 film, *The Corpse Bride*. Just one of the 700 pieces featured in his exhibition at the Lightbox Theatre.