



Install: Spare Tire Kits

See Table Below

WORK INSTRUCTION OVERVIEW

⚠ WARNING

- DO NOT ATTEMPT THIS PROCEDURE IF YOU DO NOT HAVE PROPER TOOLS, TRAINING, AND FACILITIES.
- Read and follow all instructions provided when installing this product. Failure to do so may result in placing occupants at risk of serious injury or death.
- To protect bystanders and the service technician(s), shut vehicle off, remove the Ignition Key and secure vehicle to prevent unintended movement.
- Never operate the vehicle in excess of manufacturer's specifications.

TOOLS REQUIRED

<ul style="list-style-type: none"> 13 mm Socket 13 mm Wrench 	<ul style="list-style-type: none"> Torque Wrench Protective Eye-wear
--	--

TORQUE SPECIFICATION

Tighten each fastener to the torque specification below:

- M8 Bolts** – 24.5 N•m (±3.5) - 18 ft lb (±3)
- Lug Nuts** – 45 N•m - 33.19 ft lb

KIT COMPONENT TABLE

Component	Description	Qty
	Black Steel Wheel 16 X 7 P/N: S-0404AAA07101N	1
	Aluminum Wheel 16 X 7 P/N: S-0404AAA07110N	1
	Goodyear Tire 235-70R16 P/N: S-0404BUA00031N	1
	Kenda Klever Tire 235-70R16 P/N: S-040BAA06291	1
	EFX Tire 30 X 9.5R16 P/N: S-0404BAA06261N	1
	Goodyear DuraTrac 32" Tire P/N: S-0404BUA00061N	1

MOUNTING HARDWARE

Component	Description	Qty
	Spare Tire and Wheel Mounting Bracket P/N: S-0018647	1
	Spare Tire Jack and Handle P/N: S-0002AUA00051N	1
	Spare Tire Jack Bag P/N: S-0404AUA00091N	1
	Lugnuts P/N: S-0098783	3
	M8X1.25x45 Hex Bolts P/N: S-2108264	4
	M8X16X1.5XZN5 Flat Washers P/N: S-SF0401012	8
	M8 Spring Lock Washers P/N: S-6508212	4
	M8X1.25 Hex Nuts P/N: S-SF0301009	4
	Vibration Dampner PN: S-0093750/000	3

INSTALLATION PROCEDURE

1. Install Vibration Dampners in tailgate locations below.

NOTICE Only follow steps 1- 3 if you are installing the 32" Spare Tire Support Bracket for the 3" Lift Kit.

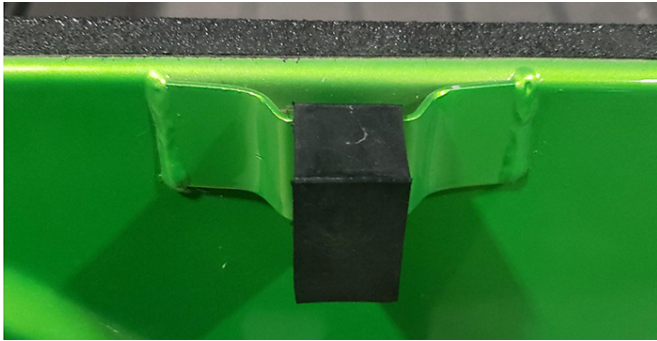




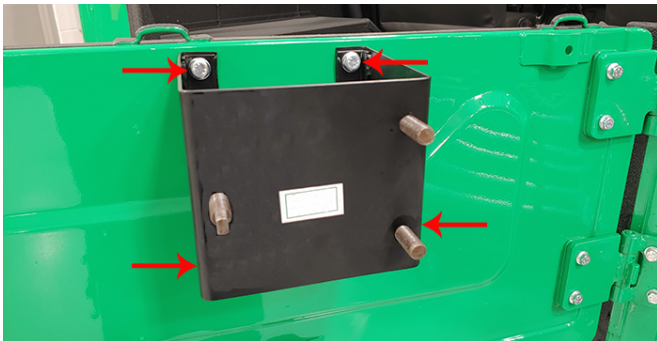
Install: Spare Tire Kits

See Table Below

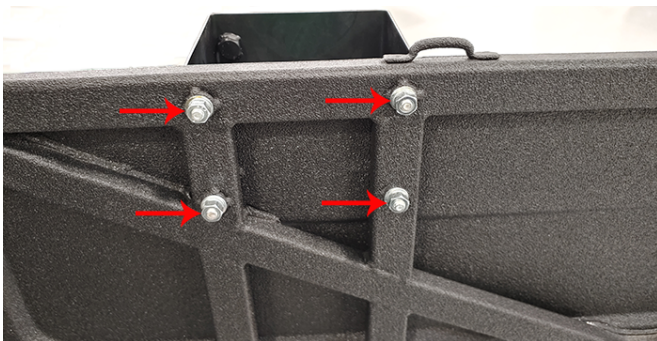
- 2. Vibration Dampners should fit loosely in holes.



- 3. Install spare tire mounting bracket with (4) M8 hex bolts and (4) M8 flat washers on bolt head side



- 4. Install (4) M8 flat washers, (4) M8 lock washers, and (4) M8 hex nuts on opposite side. Torque nuts to specification.



- 5. Install tire and hand start (3) lug nuts. Torque lug nuts after spare tire is flush with spare tire bracket.

