



# Install: Full Soft Enclosure With Hinging Doors - 4 Passenger

## Part Number: S-11AC00001554

### WORK INSTRUCTION OVERVIEW

#### ⚠ WARNING

- DO NOT ATTEMPT THIS PROCEDURE IF YOU DO NOT HAVE PROPER TOOLS, TRAINING, AND FACILITIES.
- Never consider using a two-post lift that is not certified according to ANSI/ALI ALCTV-2011 or ANSI/UL 201. (autolift.org)
- Read and follow all instructions provided when installing this product. Failure to do so may result in placing occupants at risk of serious injury or death.
- To protect bystanders and the service technician(s), shut vehicle off, remove the Ignition Key and secure vehicle to prevent unintended movement.
- Never operate the vehicle in excess of manufacturer's specifications.

#### ⚠ CAUTION

For easier installation, the top should be installed at a temperature above 72 F. Below this temperature, the fabric may contract an inch or more, making it difficult to fit the vehicle. It is normal for the fabric to contract and wrinkle when stored in the shipping carton. Within a few days after the installation, the fabric will relax and the wrinkles will disappear.

#### NOTICE

- A Windshield Assembly is required for this installation and is **sold separately**.
- For assistance with the Windshield Assembly installation (P/N-0111AUA00071N) – [click here](#)
  - The Windshield sub-assembly process for this accessory is slightly different.
  - Only the center windshield clamp should be installed and used.
  - The windshield foam supplied in this kit is not required.
- To clean this polycarbonate windshield, wash gently with mild detergent and a soft cloth or sponge. Dry to prevent water spotting. Do not use scrub brushes or squeegees.

### TOOLS REQUIRED

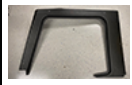





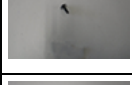


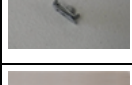
<ul style="list-style-type: none"> <li>M13 WRENCH</li> <li>M19 WRENCH</li> <li>M10 WRENCH</li> <li>M8 WRENCH</li> </ul>	<ul style="list-style-type: none"> <li>5/32 ALLEN</li> <li>5/16 ALLEN</li> <li>TORX 40</li> </ul>
---	---

### TORQUE SPECIFICATION WINDSHIELD


Tighten each Windshield fastener to the torque specification below:

- M8 Bolts** – 24.5 N•m (±3.5) - 18 ft lb (±3)
- M6 Screws** – 5 N•m (±1) - 66 ft lb (±9)

### KIT COMPONENT TABLE - CLOSE OUT PANELS

Kit Component	Description	Qty
	Panel Close Out FRT Door LH P/N: S-2302CUA00221N	1
	Panel Close Out FRT Door RH P/N: S-2302CUA00231N	1
	Bracket Close Out PNL LH P/N: S-2302FUA00161N	1
	Bracket Close Out PNL RH P/N: S-2302FUA00171N	1
	M8 Nyloc Nut P/N: S-SF0302043	4
	M6 U Nut / PT and BARBS P/N: S-0000AUA00881N	6
	M6 Large Crown WA Screw P/N: S-0000AUA00061N	6
	M8 Hex Bolt P/N: S-0000AUA02131N	4
	Cable Tie Strap 530 Long P/N: S-0000AUA00471	12
	Retainer Edge Clips	2
	Foam - Windshield PN: S-0107AUA00031N	46.5"

### KIT COMPONENT TABLE - DOOR ASSEMBLIES

Component	Description	Qty
	Door Wire LH	1

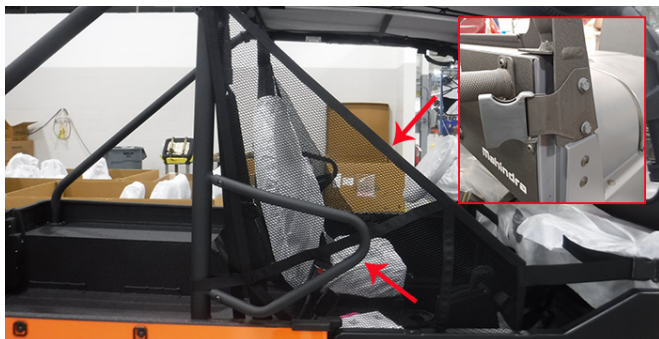


# Install: Full Soft Enclosure With Hinging Doors - 4 Passenger

## Part Number: S-11AC0001554

### INSTALL LH AND RH CLOSEOUT PANEL BRACKETS

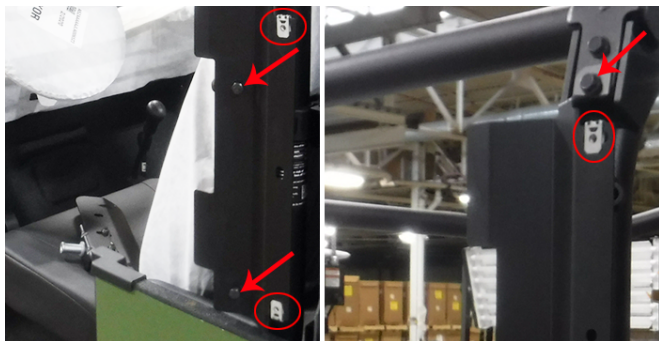
1. Remove shoulder bolsters, door nets, and net clamp from RH side of vehicle, repeat on opposite side.



2. If vehicle has no windshield, existing windshield base plate needs to be removed. Retain (4) M8 bolts for later use.



3. Install LH closeout panel bracket to "B" pillar. Use (2) M8 bolts supplied, at shoulder bolster locations, and reuse (1) M8 bolt at top of bracket. Install (3) M6 j-nuts as shown. Repeat on opposite side.



4. Install LH door striker bracket (in wire door hardware kit) to closeout panel bracket. Use (2) M8 nyloc nuts supplied to back of (2) M8 bolts installed in previous step. Repeat on opposite side.

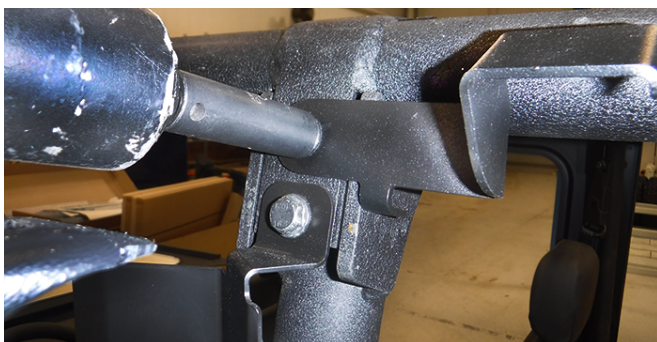


5. Install striker pin and torque to specifications. Repeat on opposite side.



### INSTALL LH AND RH SIDE BOWS.

1. On "B" pillar install the bow bracket on the LH side of ROPS. Use the existing top M8 bolt on ROPS.





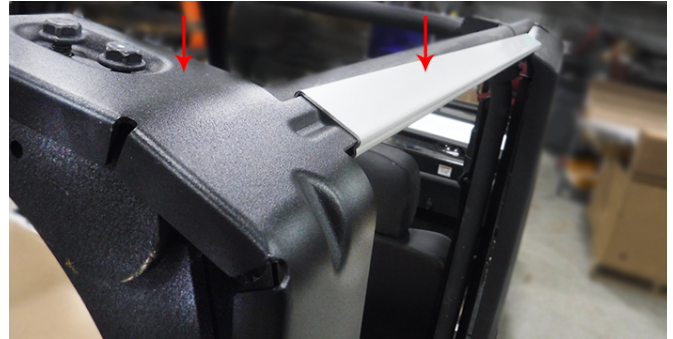
# Install: Full Soft Enclosure With Hinging Doors - 4 Passenger

## Part Number: S-11AC00001554

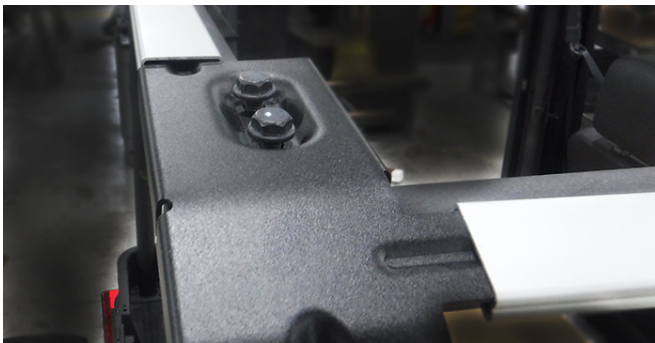
- Slide the LH side bow over the bow bracket. Install the LH corner on rear ROPS ("C" pillar) re-using existing M8 bolts from ROPS.



- Install the RH corner on rear ROPS ("C" pillar) re-using existing M8 bolts from ROPS, then install rear and RH side bow onto RH corner. Secure corner to ROPS with existing bolts.



- Install rear bow onto LH corner.



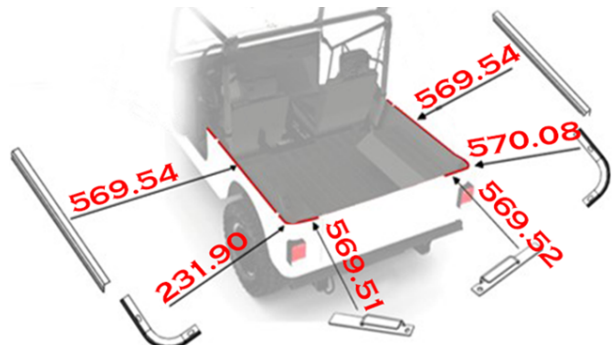
- Install RH bow bracket to RH ROPS "B" pillar with existing M8 bolts, slide RH bow over bracket.



### INSTALL LH AND RH BELT RAILS

- Install the belt rail brackets in the position with part numbers shown. (ROPS have been removed from picture for view of rail placement).

**NOTICE** 231.90 is longer than 570.08.



- Install LH belt rail corner bracket. Repeat on opposite side. The right side bracket is slightly longer than the left side.





# Install: Full Soft Enclosure With Hinging Doors - 4 Passenger

## Part Number: S-11AC00001554

3. Install LH tailgate bracket over LH belt rail corner bracket, then secure with press in plastic rivet. Repeat on opposite (RH) side.



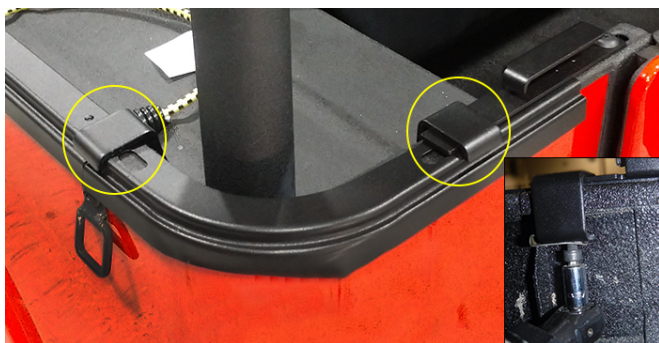
4. Install LH side window channel bracket over belt rail corner brackets. Repeat on opposite side.

**NOTICE** Flip down cargo tie downs to ensure they are not under LH side window channel.



5. Install belt rail "C" clamps over each junction of the side window channel bracket with (8) M6 cap screws (4 per side).

**NOTICE** All clamps overlap side window channel bracket except the clamp on top of LH tailgate bracket. This clamp is flush against the side window channel bracket.



### INSTALL RH AND LH CLOSEOUT PANELS

1. Loosely install windshield assembly aligning lower bolt holes with weld nuts on lower ROPS, using (4) 8 mm bolts removed previously.

**NOTICE** If windshield was previously installed, remove foam and clamps, with exception of center clamp. If installing windshield along with enclosure, do not install foam and use only center clamps.



2. If vehicle is equipped with a ROXOR Windshield (PN-0111AUA00071N or PN-11AC00001568). You will need to remove (7) M6 torx head screws, and loosen (4) lower windshield mounting bolts. With windshield loose, remove (7) ROPS clamps and discard.



3. Drill (3) 8 mm holes thru each closeout panel at dimple locations on "B" side of panels.

