



## Install: Western Snowplow Mount

Part Number: S-2302DUA00251N

### WORK INSTRUCTION OVERVIEW

Read and become familiar with all Warnings, Cautions and Notices contained herein and on the back of the snow blade. Make sure anyone you allow to operate this equipment reads and comprehends the same. If labels are missing or cannot be read, see your local sales outlet for free replacements.

Read and become familiar with all safety labels on your ROXOR. Failure to follow all on-product safety label warnings, and the warnings contained in this Operator's Guide may result in severe injury or death of the operator, passenger and bystanders.

#### Personal Safety:

- Remove the ignition key and put the vehicle in PARK or in gear to prevent others from starting the vehicle during installation or service.
- Wear only snug-fitting clothing while working on your vehicle or snowplow.
- Do not wear jewelry or a necktie, and secure long hair.
- Wear safety goggles to protect your eyes from battery acid, gasoline, dirt, and dust.
- Avoid touching hot surfaces such as the engine, radiator, hoses, and exhaust pipes.
- Always have a dry chemical fire extinguisher (Class BC) handy in the event of a flammable liquid or electrical fire.

#### Driver Distraction:

- A driver's first responsibility is the safe operation of the vehicle. The most important thing you can do to prevent a crash is to avoid distractions and pay attention to the road. Wait until it is safe to operate Mobile Communication Equipment such as cell phones, text messaging devices, pagers, or two-way radios.

#### Noise & Vibration:

- Airborne noise emission during use is below 95 dB(A) for the snow plow operator. Operating snow plow vibration does not exceed 2.5 m/s<sup>2</sup> to the hand-arm or 0.5 m/s<sup>2</sup> to the whole body.

### ⚠ CAUTION

- Read this entire document before installing the snowplow.
- See your sales outlet/website for specific vehicle application recommendations before installation.
- Refer to the online selection tool for specific vehicle snowplow requirements, minimum vehicle recommendations and ballast requirements.

### ⚠ WARNING

- DO NOT ATTEMPT THIS PROCEDURE IF YOU DO NOT HAVE PROPER TOOLS, TRAINING, AND FACILITIES.
- Never consider using a two-post lift that is not certified according to ANSI/ALI ALCTV-2011 or ANSI/UL 201. (autolift.org)
- Read and follow all instructions provided when installing this product. Failure to do so may result in placing occupants at risk of serious injury or death.
- To protect bystanders and the service technician(s), shut vehicle off, remove the Ignition Key and secure vehicle to prevent unintended movement.
- To prevent accidental movement of the blade, always turn the control OFF whenever the snowplow is not in use. The power indicator light will turn OFF.
- Lower the blade when vehicle is parked. Temperature changes could change hydraulic pressure, causing the blade to drop unexpectedly or damaging hydraulic components. Failure to do this could result in serious personal injury.
- The driver shall keep bystanders clear of the blade when it is being raised, lowered, or angled. Do not stand between the vehicle and the blade or within 8 feet of a moving blade. A moving or falling blade could cause personal injury.
- Keep hands and feet clear of the blade and A-frame when mounting or removing the snowplow. Moving or falling assemblies could cause personal injury.
- Remove blade assembly before placing vehicle on hoist.
- Vehicle mount reduces ground clearance. Use additional caution when driving vehicle with mount installed. Remove vehicle mount to restore original vehicle ground clearance at the end of the plowing season.
- Vehicle exhaust contains lethal fumes. Breathing these fumes, even in low concentrations, can cause death. Never operate a vehicle in an enclosed area without venting exhaust to the outside.
- Never operate the vehicle in excess of manufacturer's specifications.



## Install: Western Snowplow Mount

Part Number: S-2302DUA00251N

### TOOLS REQUIRED





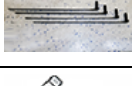

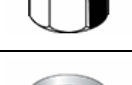

- |                 |                             |
|-----------------|-----------------------------|
| ◦ 3/4" Socket   | ◦ Protective Eye-wear       |
| ◦ 3/4" Wrench   | ◦ Ratchet / Socket Driver   |
| ◦ Alignment Pin | ◦ Torque Wrench (N•m/Ft•Lb) |

### TORQUE SPECIFICATION

Tighten each fastener to the torque specification below:

- **Hex Flange Bumper Bolts** – 38 N•m ( $\pm 4$  N•m)
- **All 1/2"-13 Fasteners** – 102 N•m ( $\pm 9$  N•m)

### KIT COMPONENT TABLE

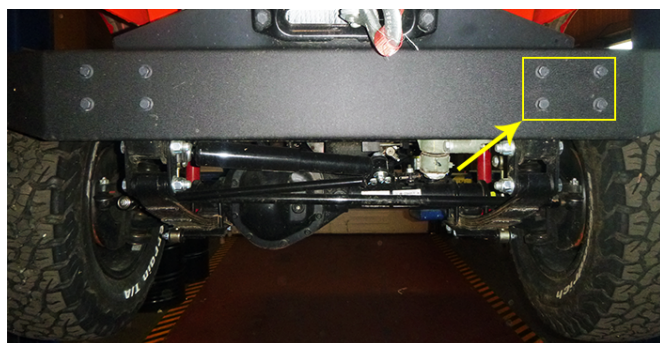
Kit Component	Description	Qty
	Mount Beam	1
	Thrust Plates, Drivers & Passenger Side	1 ea.
	Front Plate, Drivers & Passenger Side	1 ea.
	UTV Wiring Kit	1
	1/2"-13 x 1-1/2" Hex Head Bolts w/Handle (G5)	4
	1/2"-13 x 1-1/2" Hex Head Bolts (G5)	8
	1/2"-13 Hex Lock Nut (GB)	12
	1/2" Flat Washer (Hardened-Type 1)	12

### CRADLE INSTALLATION PROCEDURE

1. Remove (4) driver's side bumper bolts, leaving passenger side in place.

#### NOTICE

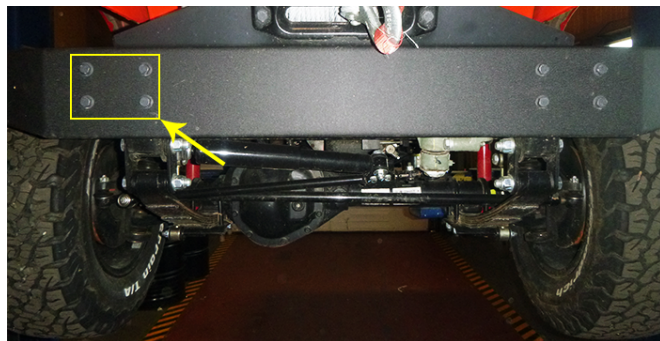
For easier assembly and installation, vehicle and all snowplow components should be on a smooth, level, hard surface, such as concrete.



2. Install driver's side Front Plate using (4) removed bumper bolts, add (4) supplied 1/2" flat washers to each bolt and hand tighten all.



3. Remove (4) passenger side bumper bolts.







## Install: Western Snowplow Mount

Part Number: S-2302DUA00251N

4. Install passenger side Front Plate using (4) removed bumper bolts, add (4) supplied 1/2" flat washers to each bolt and hand tighten all.



5. Loosely secure driver-side Thrust Plate to Front Plate using (4) 1/2" x 1-1/2" hex head bolts and (4) 1/2" locknuts supplied.

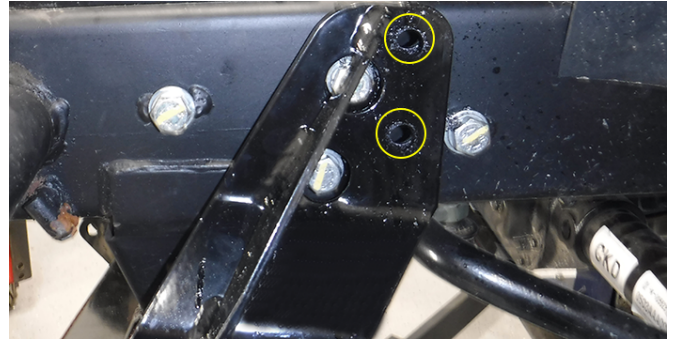


6. Repeat previous step on the opposite side to secure the passenger side Thrust Plate.



7. Ensure fasteners are tight enough to pull Thrust Plates against vehicle frame. Then use the Thrust Plate as a drill guide to drill (2) 1/2" holes through frame.

**CAUTION** Before drilling holes, check to be sure that no vehicle wiring or other components could be damaged.



8. Remove Front Plates, Thrust Plates and Front Bumper and retain all fasteners.



9. Trim (4) 1/2"-13 x 1-1/2" Hex Head Bolts with handles to approximately 11".



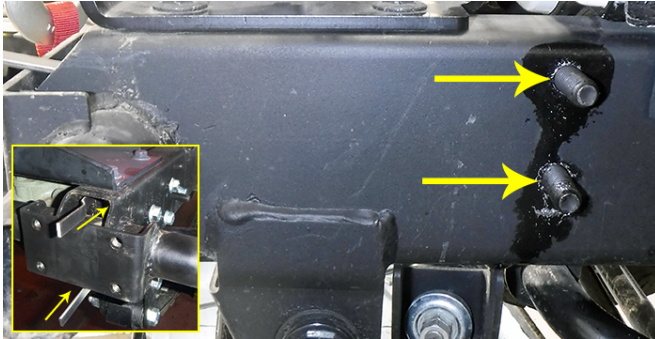




## Install: Western Snowplow Mount

Part Number: S-2302DUA00251N

10. Install (4) 1/2" flat washer to (4) 1/2"-13 x 1-1/2" Hex Head Bolts with handles. Then insert assemblies into end of vehicle frame and out through holes drilled in previous step. Two on each side.

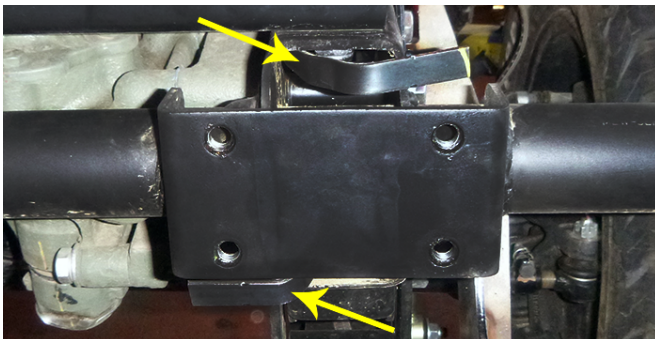


11. Install driver's side Thrust Plate over Hex Head Bolts with handles, then install (2) 1/2"-13 Hex Lock Nut and do not over tighten. Repeat this step on passenger side.

**NOTICE** Apply a few drops of Loctite 243 or similar to all fasteners before installing.



12. Bend both driver's side handles over as shown, then bend passenger side to allow front bumper installation.



13. Re-install the front bumper with Front Plates using (8) bumper bolts and (8) washers retained from earlier in this procedure, hand tighten only.

**NOTICE** Apply a few drops of Loctite 243 or similar to all fasteners before installing.



14. Install Mount Beam using (8) 1/2" x 1-1/2" hex head bolts and (8) 1/2" locknuts and hand tighten.



15. Bolts must be installed with heads positioned inside of Mount Beam and locknuts on the outside as shown. This allows clearance for plow spring shackle travel.



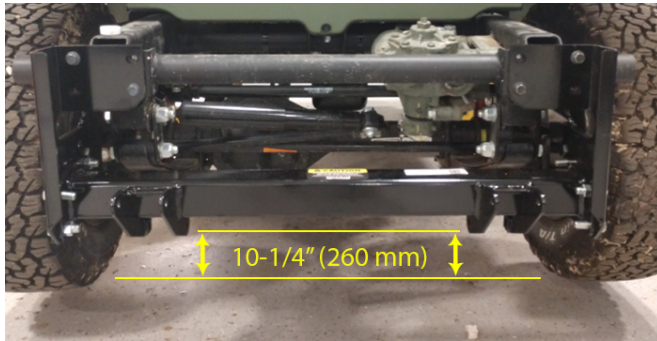




## Install: Western Snowplow Mount

Part Number: S-2302DUA00251N

16. Use a set of holes that positions the center of the Rear Receiver Pin hole closest to 10-1/4" above the ground. Measure both sides to verify Mount Beam is level. Snug all fasteners, then torque all fastener to specification. Recheck torque of all fasteners after 5-10 hours of snowplow usage.



### HARNESS INSTALLATION PROCEDURE

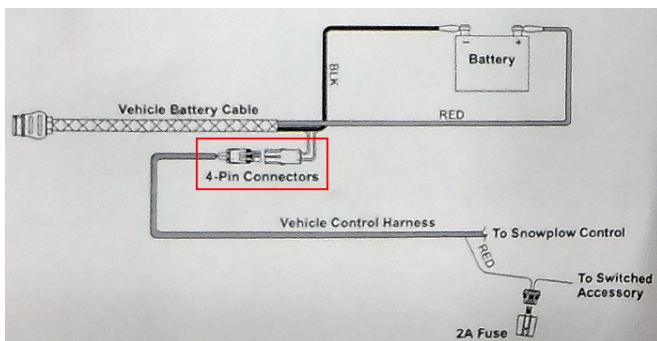
17. Route vehicle battery cable from front of vehicle to battery. Ensure routing path avoids hot, sharp, or moving parts, then secure with supplied zip ties.

#### NOTICE

Do not connect vehicle battery cable to battery at this time.



18. Connect vehicle control harness and vehicle battery cable at the four pin connectors.



19. Route vehicle control harness into cab where control will be installed.



20. Connect fused red wire from vehicle control harness to keyed power.

#### NOTICE

Acceptable keyed power will show 12 volts when ignition switch is ON, and zero volts when ignition switch is OFF.



21. Connect positive and then negative battery cables to auxiliary battery posts and tighten.

