

# **End-to-End Process: Recruitment & Onboarding**

Last edited: October 2023



# Contents

## Non-Clinical Hires

- **Step-by-Step Process Breakdown:**
  - Role Need to Application
  - Application to Offer
  - Offer to Start Date
  - Post Start Date (including Induction)

## Clinical Hires

- **Step-by-Step Process Breakdown:**
  - Role Need to Application
  - Application to Offer
  - Offer to Start Date
  - Post Start Date (including Induction)

## Related Resources

- **Internal Documents**
- **Information for Candidates**



# Non-Clinical Hires

# Key Process Stages



Role Need to  
Application



Application  
to Offer



Offer to  
Start Date

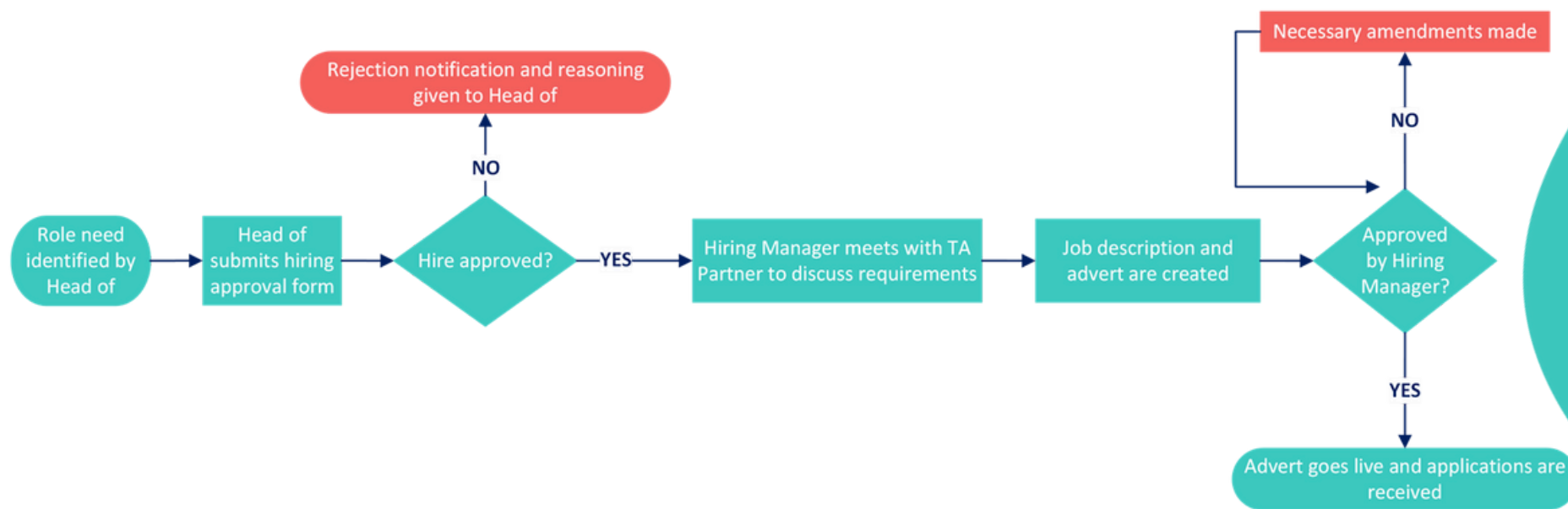


Post Start  
Date





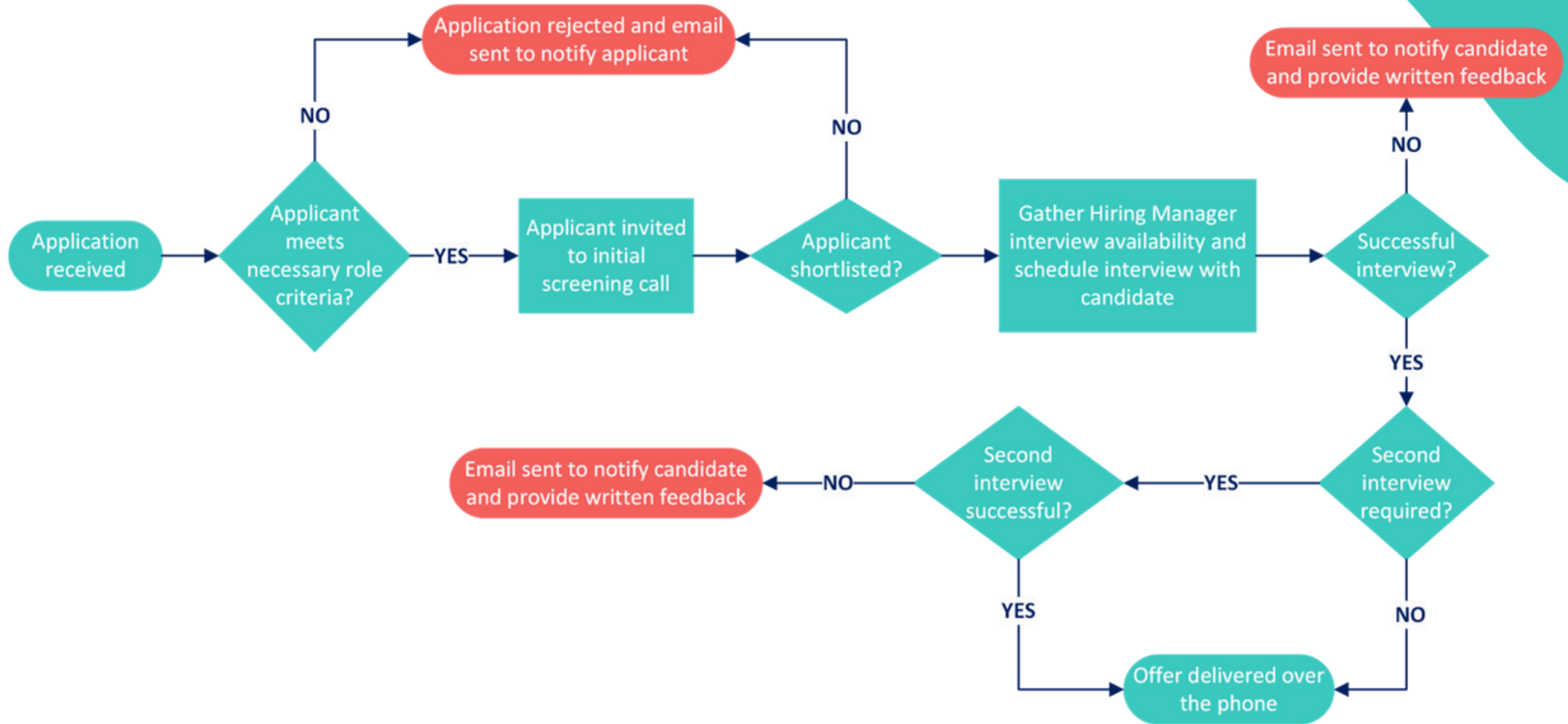
# Role Need to Application



[Hiring Approval Form Link](#)

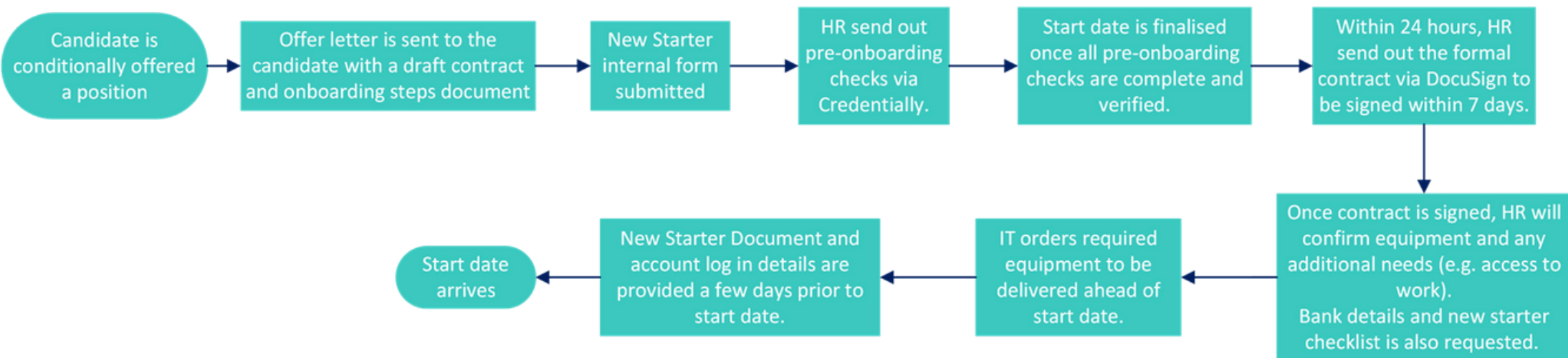


# Application to Offer



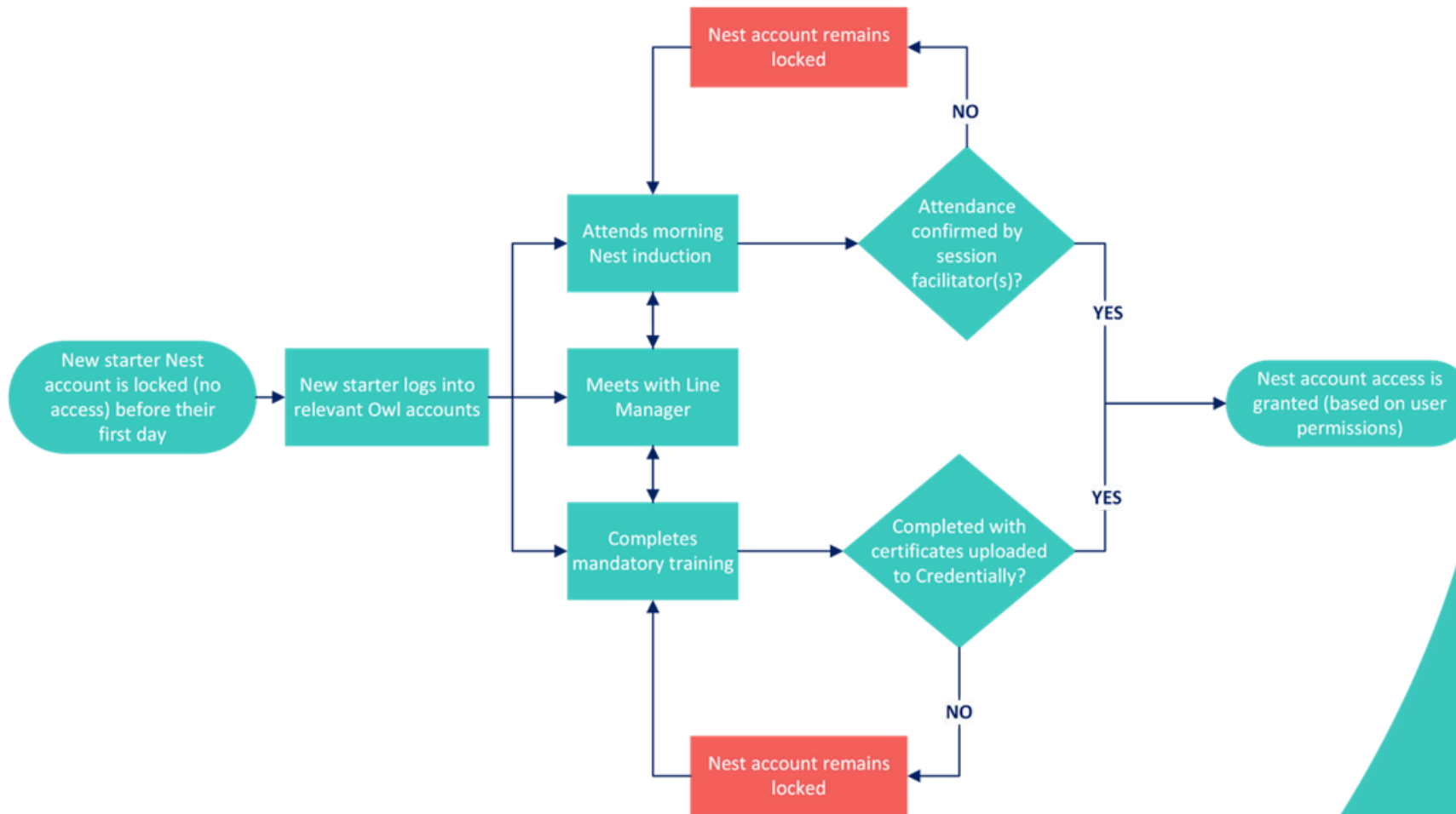


# Offer to Start Date





# Post Start Date



# Clinical Hires

# Key Process Stages



Role Need to  
Application



Application  
to Offer



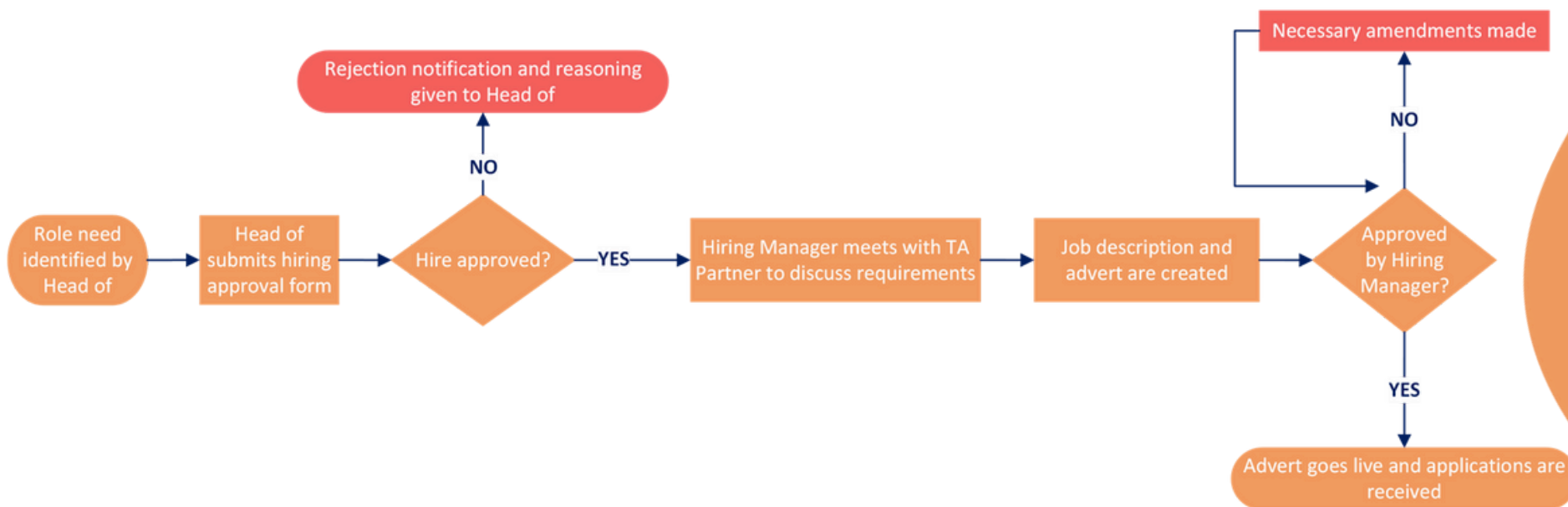
Offer to  
Start Date



Post Start  
Date



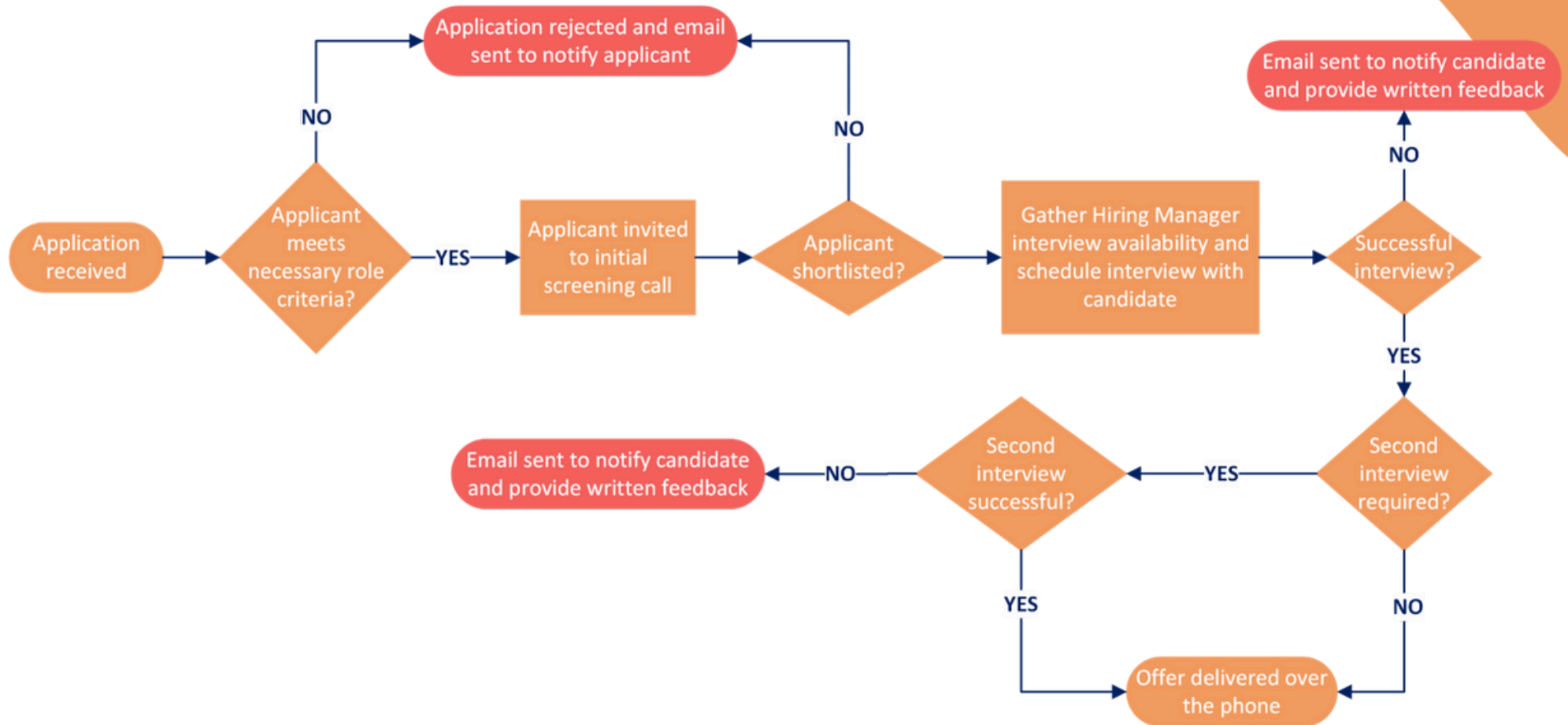
# Role Need to Application



[Hiring Approval Form Link](#)



# Application to Offer

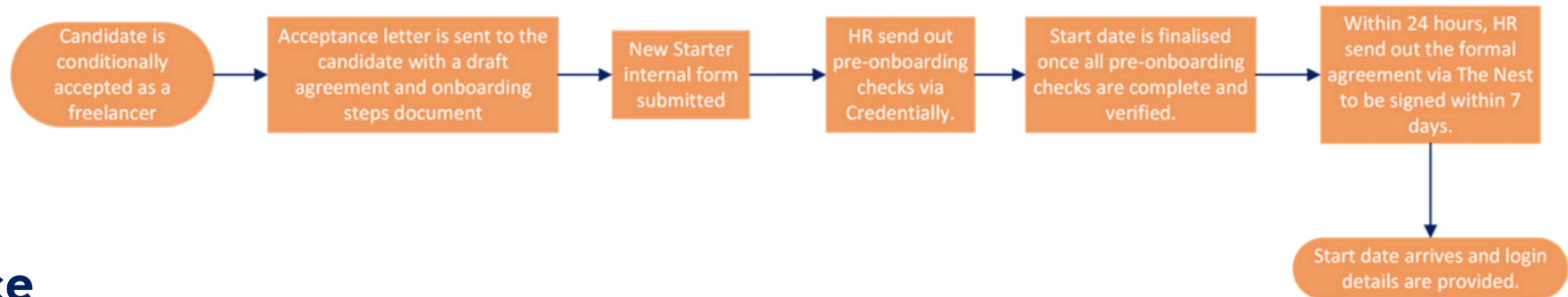




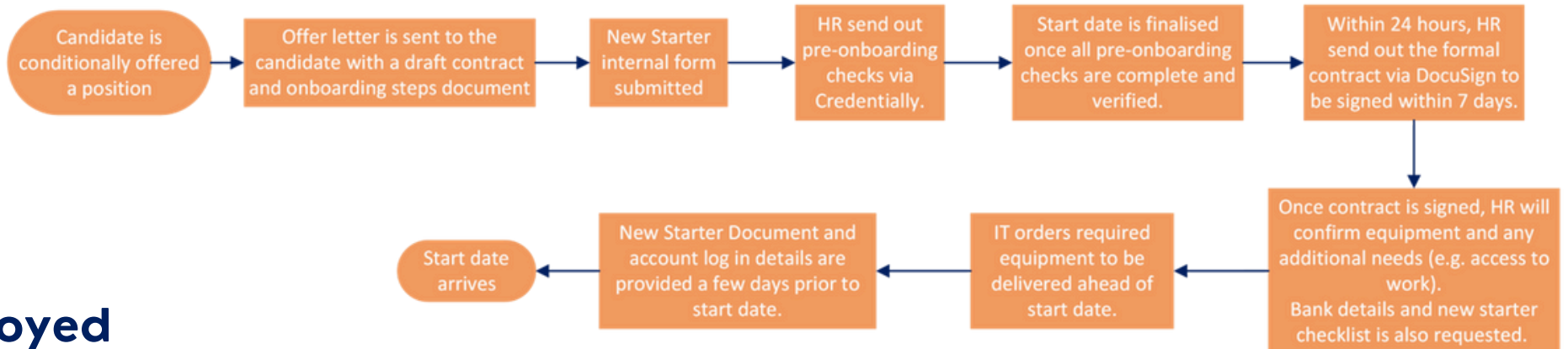


# Offer to Start Date

## Freelance

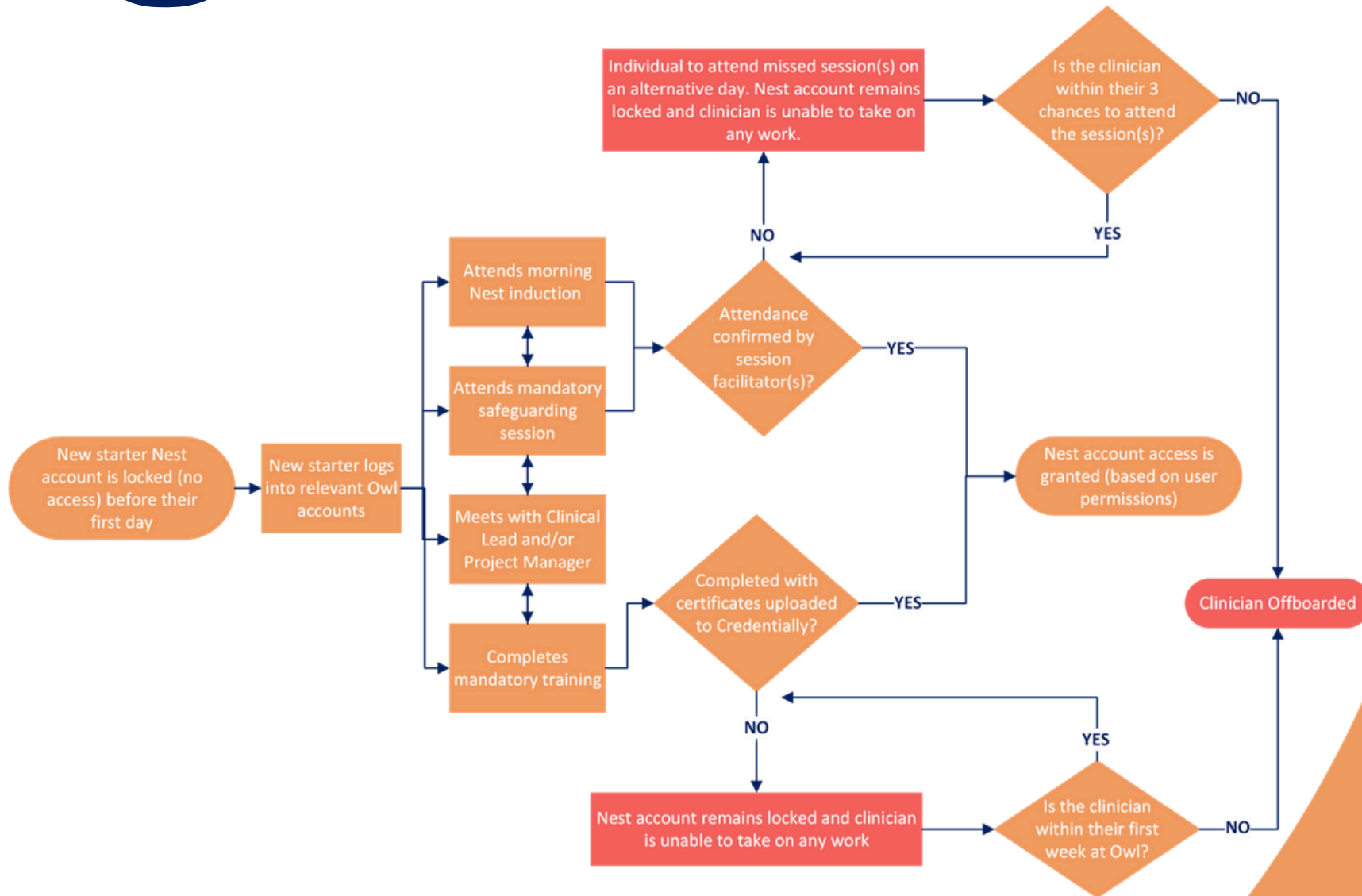


## Employed





# Post Start Date





# Related Resources



# Internal Documents

## End-to-End Complete Process Maps

- [Employed Clinical Hires](#)
- [Freelance Clinical Hires](#)
- [Employed Non-Clinical Hires](#)

## Document Templates

- [Job Descriptions](#)
- [Initial Screening Calls](#)
- [Interviews](#)
- [Offer Letters](#)

## Useful Guides & Documents

- [Example Email Templates](#)
- [Recruitment Inbox Guide](#)

## Induction Session Guides

- [Employed Clinical Hires](#)
- [Freelance Clinical Hires](#)
- [Employed Non-Clinical Hires](#)

## Owl Branding Content

- [Colours](#)
- [Logos](#)
- [Icons](#)
- [PowerPoint Templates](#)
- [Word Templates](#)





# Information for Candidates

## Useful Links

- [The Nest](#)
- [HR Partner](#)
- [E-Learning](#)
- [Mandatory Training Information](#)

## Onboarding Journey Guides

- [Employed Hires \(Clinical & Non-Clinical\)](#)
- [Freelance Hires \(Clinical\)](#)

## First Day Documents (Employed)

- [New Starter First Day Guide](#)
- [Employee Handbook](#)

