

Basil's Forever Sofa



Helping Dogs in Need

ADOPTION
PACK



CONTENTS

Introduction

Welcome	3
About Us	3

Adopting from Basil's Forever Sofa

Our Process	4
Adoption Fees	5
Vaccinations & Tests	6

Preparing for your new arrival

Important Items	7
What to Expect	8

Settling In

Health on Arrival	9
Behaviour	10
The Rule of Three	11

Final Thoughts

Keeping in Touch	12
Ways to Support Us	12



WELCOME!

Congratulations on your new addition and a huge thank you from all of us for choosing a dog from Basil's Forever Sofa!

ABOUT US

At Basil's Forever Sofa, we are dedicated to rescuing Romanian dogs from the desperate and horrific situations they find themselves in, whether they are on the streets or in kill shelters, we want them to help find them a loving home.

All of our dogs have been overlooked by other rescues for a variety of reasons, they may be older or bigger or just plain scruffy (who doesn't love a scruffy dog?!).

WHY ARE THESE DOGS OVERLOOKED?

Because smaller, younger or short-furred dogs are easier to keep and are 'lower risk' in terms of their care, meaning rescues can offer support to more dogs.

Unfortunately, this means that there are lots of dogs that still need rescuing and we work extra hard to find these dogs the amazing homes they deserve.

WHY ARE YOU CALLED BASIL'S FOREVER SOFA?

Because of Basil! (pictured below)

Basil is our namesake as he was one of these very dogs, older and overlooked. We're lucky enough to have Basil to remind us of why we do this work every single day!



OUR ADOPTION PROCESS

Our process is thorough, but simple, we pride ourselves on getting the right match between dog and home and offering advice and support on what is best for you and our dogs.



1 Message us and find the perfect dog to join your family!



2 We send you an application to complete and return



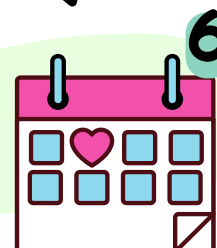
3 We take a £50 reservation fee and book your home check



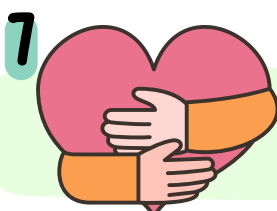
4 Home check is completed and remainder of adoption fee is paid



5 We arrange transport for your dog



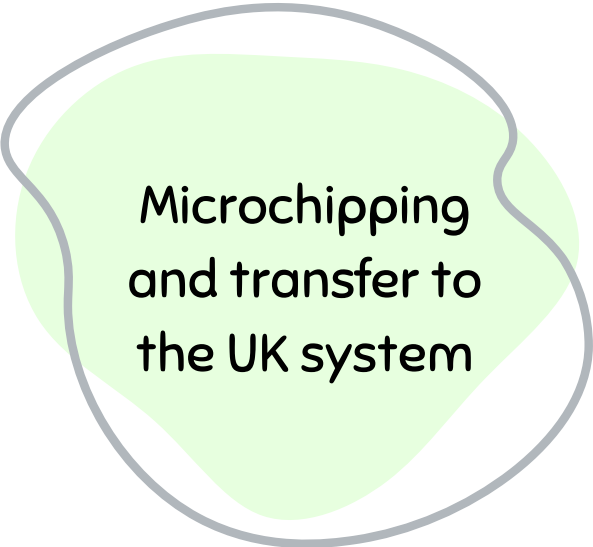
6 Your new family member arrives!



7 We continue to offer post-adoption support for you and your dog.

OUR ADOPTION FEES

Adoption fees cover a whole host of different costs associated with rescuing Romanian dogs and transporting them to the UK.



Microchipping
and transfer to
the UK system



Neutering* and
Vet Fees

*age dependent



Tests and
Vaccinations



Transport to
the UK



3 months of
behavioural
support



VACCINATIONS & TESTS

We ensure all of our dogs are healthy by vaccinating against:

DISTEMPER

A viral disease which attacks the gastrointestinal and respiratory systems, spinal cord and brain.

PARVOVIRUS

A viral disease which attacks the intestines.
Fatal if left untreated.

RABIES

A viral disease which is fatal and affects the brain and nervous system. Dogs must wait 21 days after the vaccination before they can enter the UK.

HEPATITIS

An acute liver infection which can effect both the liver and kidneys.

LEPTOSPIROSIS

A bacterial infection that enters through the skin and damages vital organs, such as the kidneys and liver.

WE ALSO TEST FOR:

- Brucellosis
- Leishmaniasis
- 4dx / CaniV-4 (heartworm, ehrlichiosis, lyme disease, anaplasmosis)
- Babesiosis (depending on availability)

IMPORTANT ITEMS

Things you'll need before your new dog arrives!

- 🐾 Bowls for food & water
- 🐾 Food (we recommend something bland to start with, such as Chappie biscuits, you can move on to any suitable food gradually)
- 🐾 Slip lead
- 🐾 ID tag which includes your phone number, address and postcode (this is a legal requirement for all dogs)
- 🐾 Crate
- 🐾 Bed
- 🐾 Pet wipes
- 🐾 Nail clippers
- 🐾 Brushes and/or combs
- 🐾 Poop bags
- 🐾 Puppy pads
- 🐾 Variety of toys
- 🐾 Variety of treats (not rawhide)
- 🐾 Prokolin (a prebiotic paste for upset tummies)
- 🐾 Oralade (a rehydration drink, great for their arrival!)

NOTE:

Our teams will do their best to take measurements for a collar before arrival but they may not be accurate or possible to get, depending on the dog.





WHAT TO EXPECT

Though a new arrival is incredibly exciting for us as humans, your dog will have been through a very long journey. So what should you expect?

FEARFUL

It's important to be aware and ready for a scared dog, this fear and anxiety is completely normal and your dog will settle down.

OVERWHELMED

Whilst your dog is overwhelmed and still getting used to the surroundings, please do not give your dog hugs and kisses as they may not know how to respond and it could result in negative outcomes.

Expect to have to increase access to your home slowly as this will prevent issues such as guarding and destruction. Your dog will be used to a kennel environment so having lots of space and luxuries (like sofas) will be very overwhelming and may have a negative impact if this happens all at once.

BARKING & CRYING

Expect your new dog to bark, cry or howl – this is normal communication in kennels.

WITHDRAWING

Your dog may withdraw to their crate or safe space, this is also normal and it's important to give them their space to allow them to process their environment.



Make sure to keep your dog on your property for 48 hours – this is a legal requirement which is enforced by DEFRA.



HEALTH ON ARRIVAL

When your new dog arrives, you may notice something you'd not expected. We've listed some of the most common things you might encounter upon arrival.

KENNEL COUGH

- Very common
- Usually contracted during transport.
- It can sound like your dog is 'hacking' and sounds worse than it is.
- Usually, it will clear on its own, but manuka honey may help to relieve the cough and act as an antibacterial agent. You can dissolve this in water or put onto their food directly.
- You do not need to take your dog to the vet unless it turns into a secondary infection.

DENTAL ISSUES

- Romanian vets and UK vets differ in opinion when it comes to dental care.
- In Romania, they will not extract teeth unless absolutely necessary, so your UK vet may recommend dental work.
- Dental work can be very expensive, especially if the vet is recommending multiple extractions, so we recommend you base your decision on whether the issue is impacting your dog's quality of life.

CONSTIPATION & COLITIS

- Both can be caused by the stress of travel and the anxiety around being in a new environment.
- Your dog may not defecate for a few days or their faeces may be runny, with mucus or small amount of fresh (red) blood.
- Make sure they have access to plenty of clean water, whilst avoiding your dog over-drinking (more than half a bowl at once)
- Keep to plain food (e.g. rice and boiled chicken or Chappie; this will help to settle their digestion.
- Continue using Prokolin until their stomach has settled.

FLEAS & WORMS

You may suspect these if your dog is itching or has sore skin, however your dog will already have been treated before travelling so please do not administer any treatment for at least 4 weeks after arrival.



BEHAVIOUR

As a rescue, our priority is making the right match between dogs and homes. We've listed several common issues and our advice below, for more guidance you can check out our Behaviour Guide.

RESOURCE GUARDING

- This may include food, humans or objects
- Avoid giving access to everything all at once
- Slowly introduce new things and give your dog their own space to eat in

SEPARATION ANXIETY

- Make sure that you are leaving your dog alone in their crate for small amounts of time
- They will realise you do come back and this avoids creating an over-reliance on you being by their side constantly

HOUSE SOILING

- Your dog may have never been in a home environment before
- For many dogs, house training is required

FEAR OF NEW PEOPLE & PETS

- Introduce people and/or pets slowly
- Allow your dog to decompress for the first few days at least
- Limit any interactions to positive ones (e.g. do not try to introduce a reactive dog to your rescue)

ATTEMPTING TO ESCAPE

- Romanian dogs are notorious escape artists and will take any opportunity they can to try and escape
- Keep all doors and windows shut and locked when your dog is in the house
- Exercise your dog on a lead in the garden for the first few weeks
- Remember your dog may be nervous about large open spaces, cars, planes, vans, new people, other dogs etc. Take it at their pace and try to walk in quiet areas when you first venture out
- Make sure to double-lead your dog and use a tracker, just in case they manage to get away
- Request a free GPS tracker for your dog – ask us for more information!

RULE OF THREE

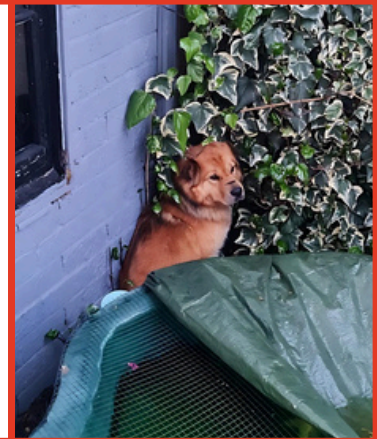


The time it takes your dog to settle in will vary massively and should be led by the dog. Most rescue dogs go through three stages of getting used to their new home.

Don't panic if things don't feel like they are going "to plan", there is no plan or exact guide you can follow as each dog has a different background. Be patient and follow their lead.

FIRST 3 DAYS

- Feeling overwhelmed and fearful
- May not eat or drink
- Shut down – may hide away to feel safe
- Not comfortable to "be themselves"
- Testing boundaries
- Trying to escape



FIRST 3 WEEKS

- Starting to settle in
- Feeling more comfortable
- Understands the environment
- Getting into a routine
- Letting guard down
- Behaviour issues may start to show



FIRST 3 MONTHS

- Finally completely comfortable in their new home
- Building trust and bonds
- Gained a complete sense of security
- Set in the family routine





KEEPING IN TOUCH

We truly cannot thank you enough for opening your hearts (and sofas!) to one of our wonderful dogs here at Basil's Forever Sofa.

Thank you for taking the time to review this pack. We strive to ensure that our adopters feel fully supported and well-prepared throughout the entire process, so if you have any queries or concerns, just pop us a message!

WAYS TO SUPPORT US

Please follow our Facebook page and join our Adopters group too! Every share, like and comment helps us to find our dogs loving homes.

You can also:

- Join our Monthly Ball Draw (with one-off and regular entries available) where you'll be in for a chance of winning a cash prize!
- Send us a one-off or recurring donation via Paypal (Friends & Family only please!).

We're very grateful for any support we receive, no matter what it looks like as it all enables us to help more dogs find their Forever Sofas!



THANK
YOU!

SOME OF OUR DOGS

