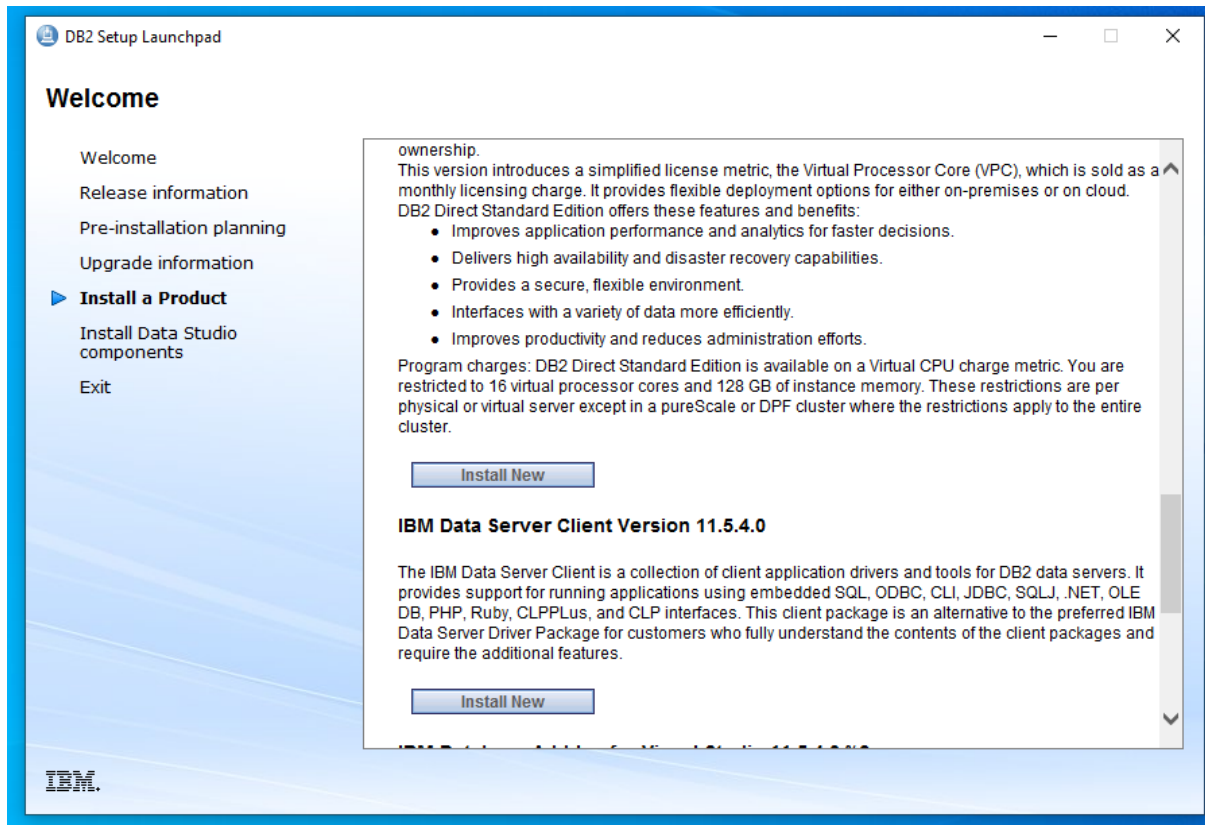
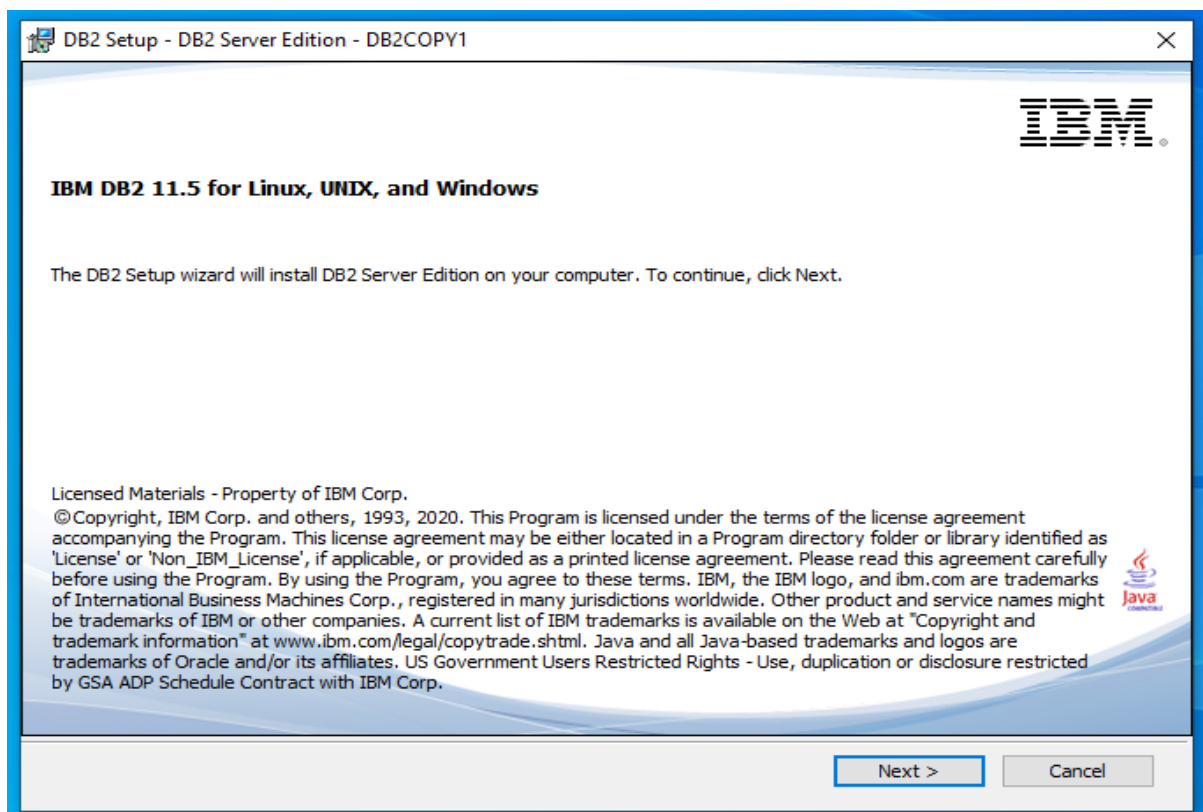
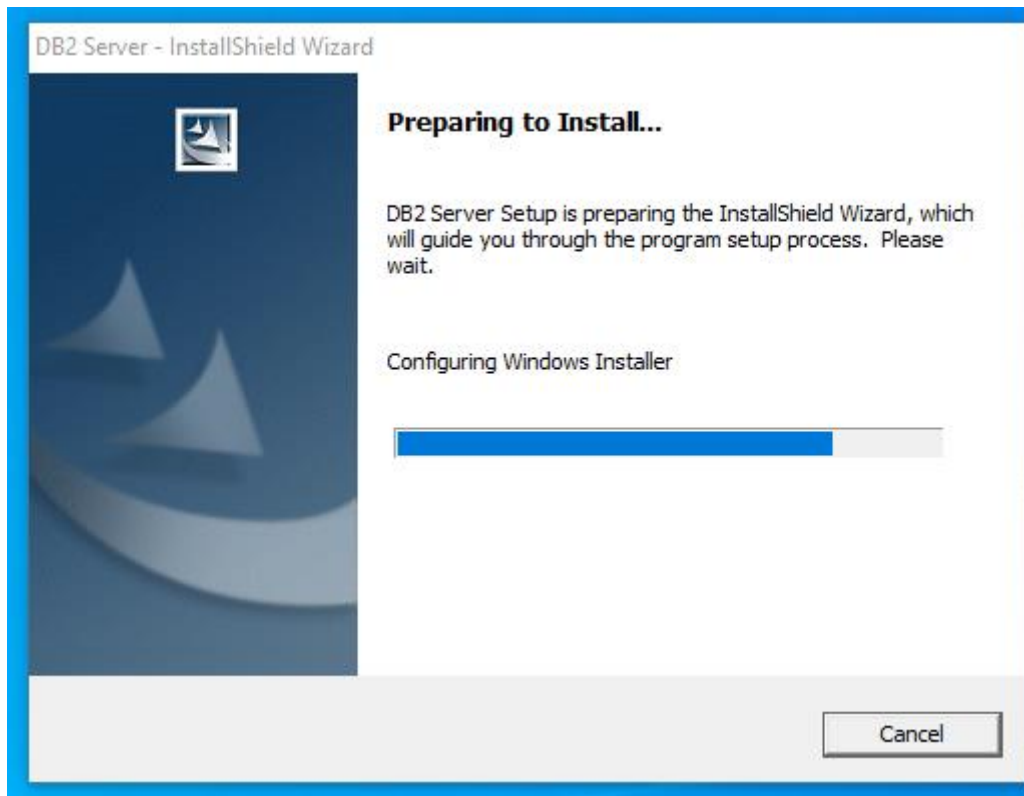


IBM – DB2 INSTALLATION

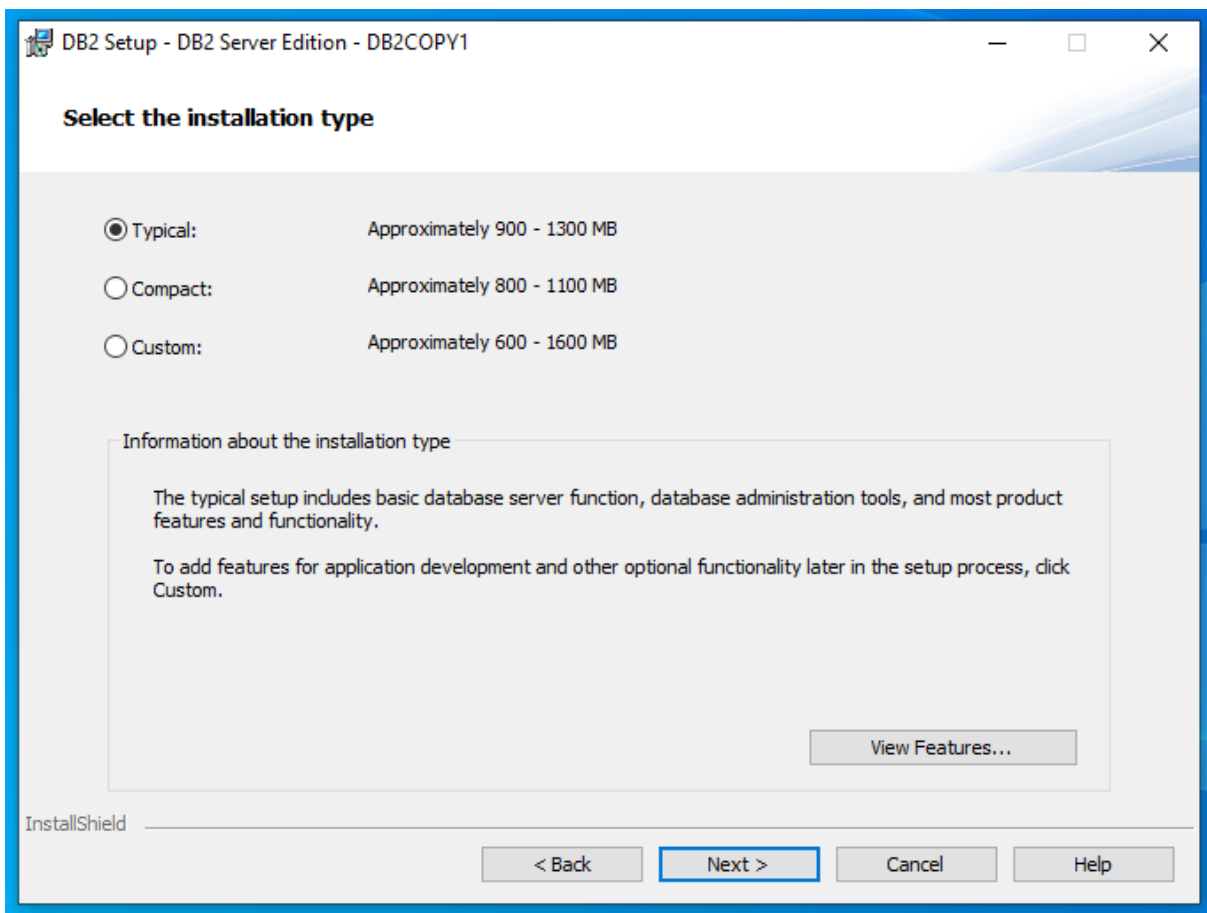
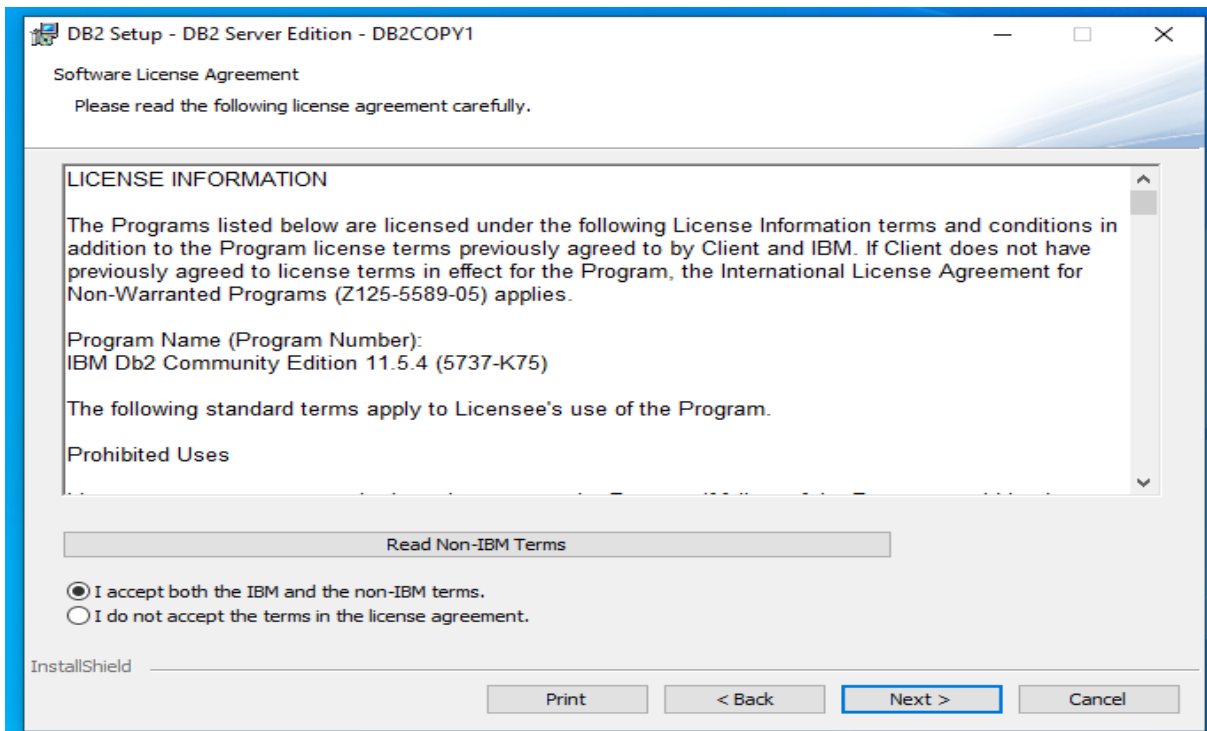
Step 1: Go to the db2setup. Open it and click on install a product.

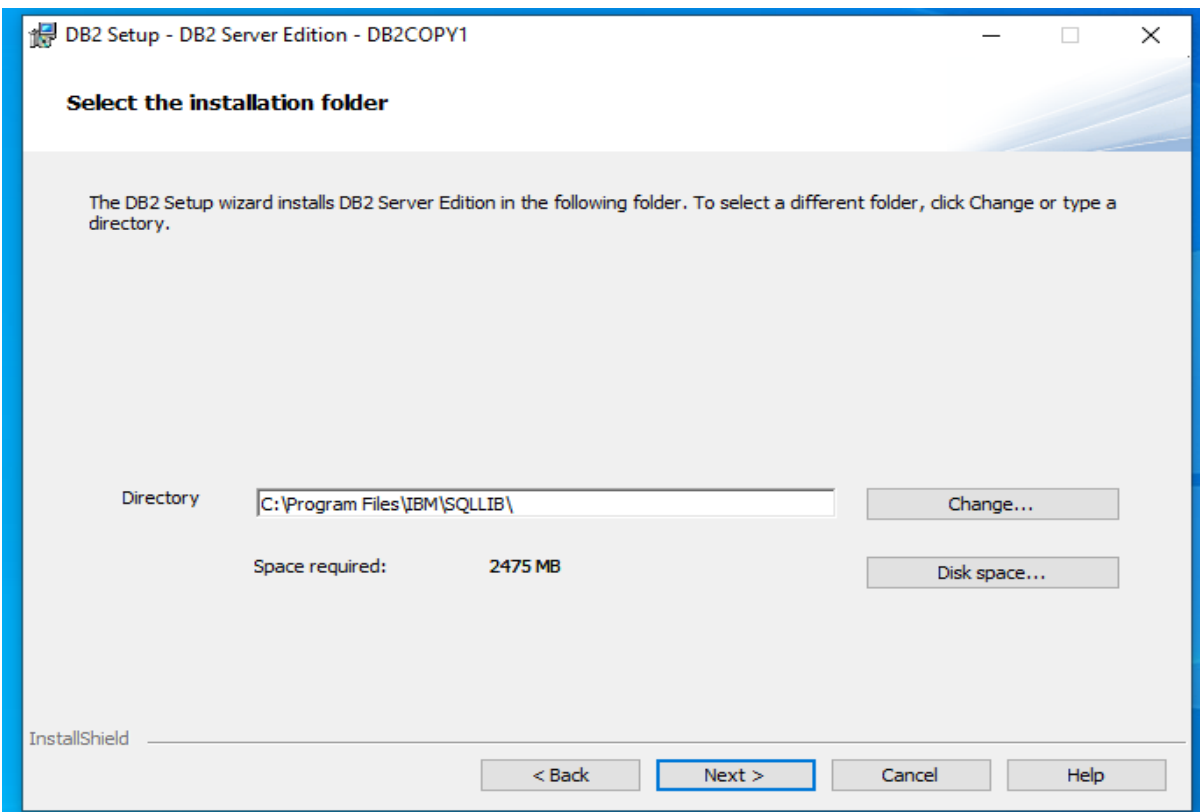
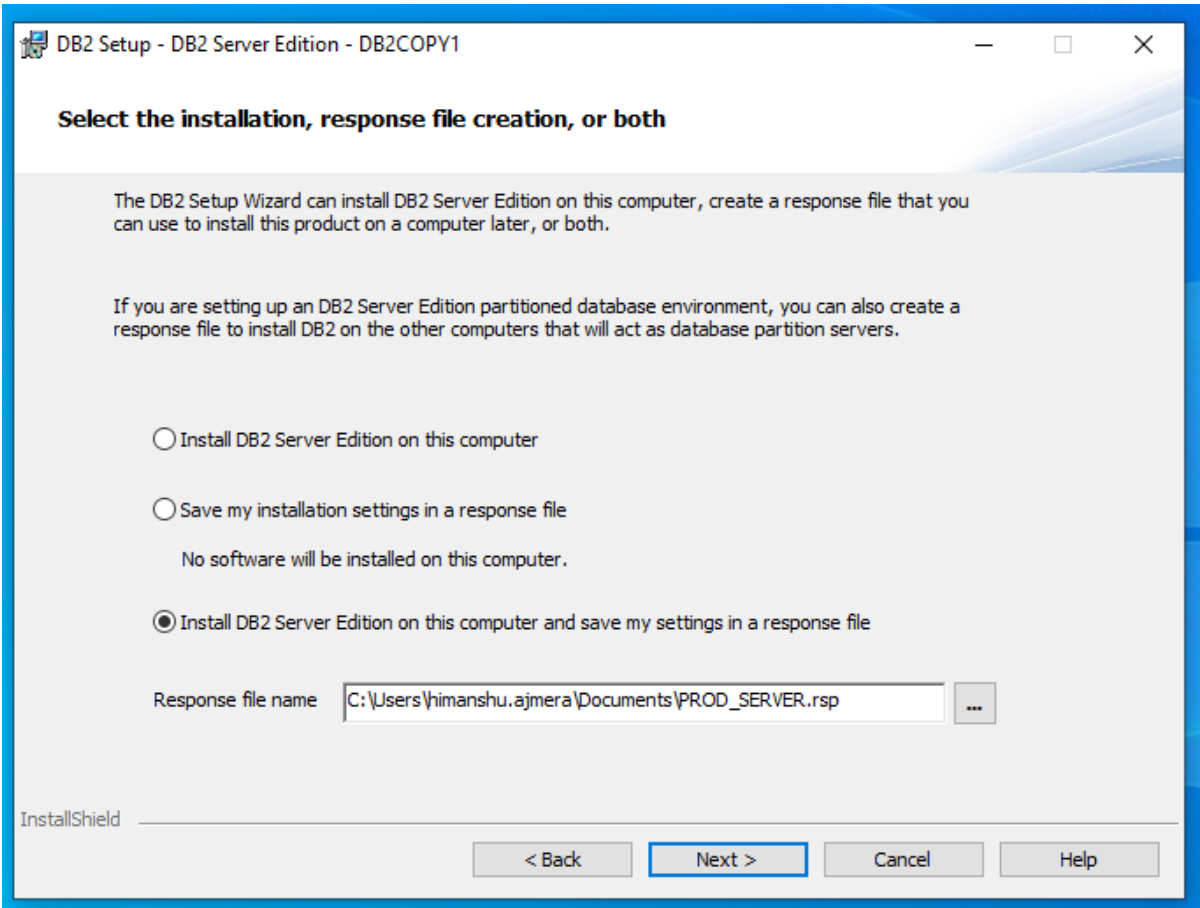


Step 2: Click on install new.



Step 3: Follow the given instruction one by one as shown in the figures.

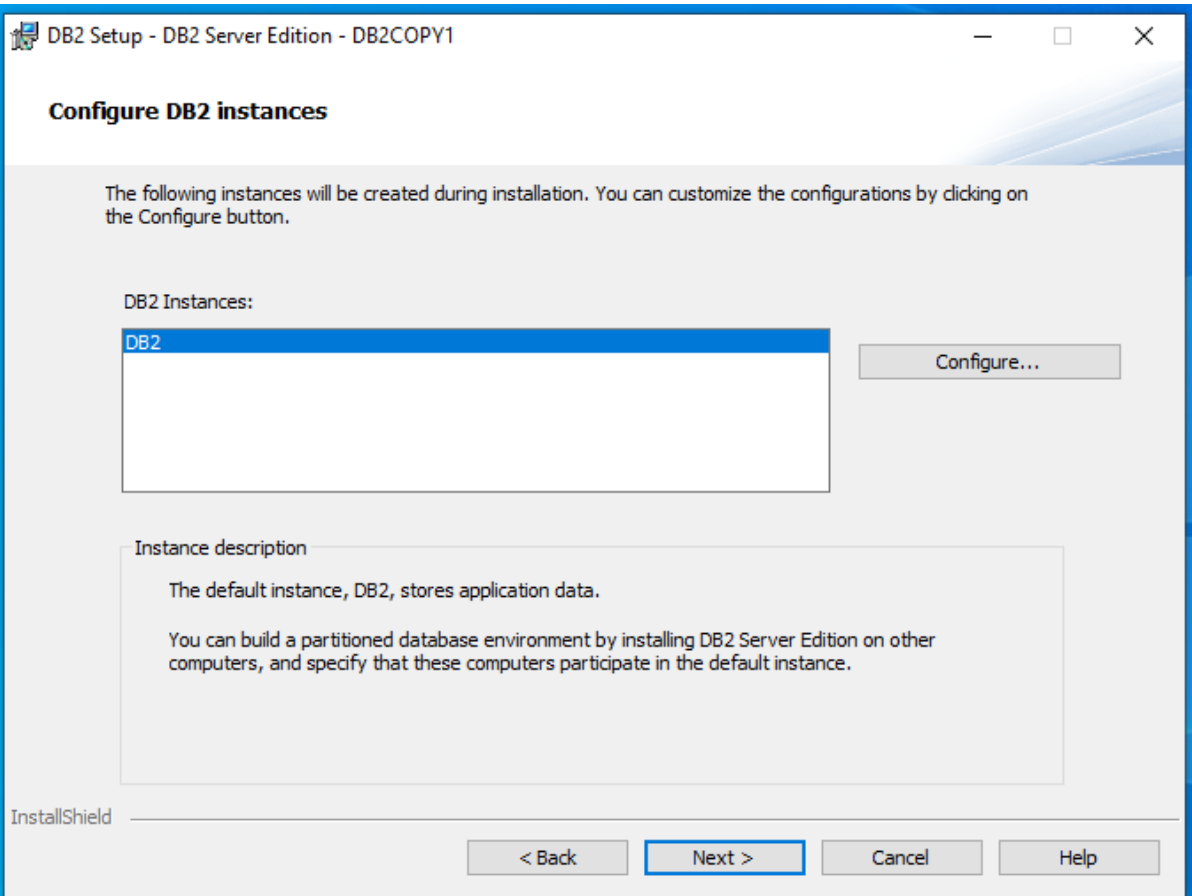
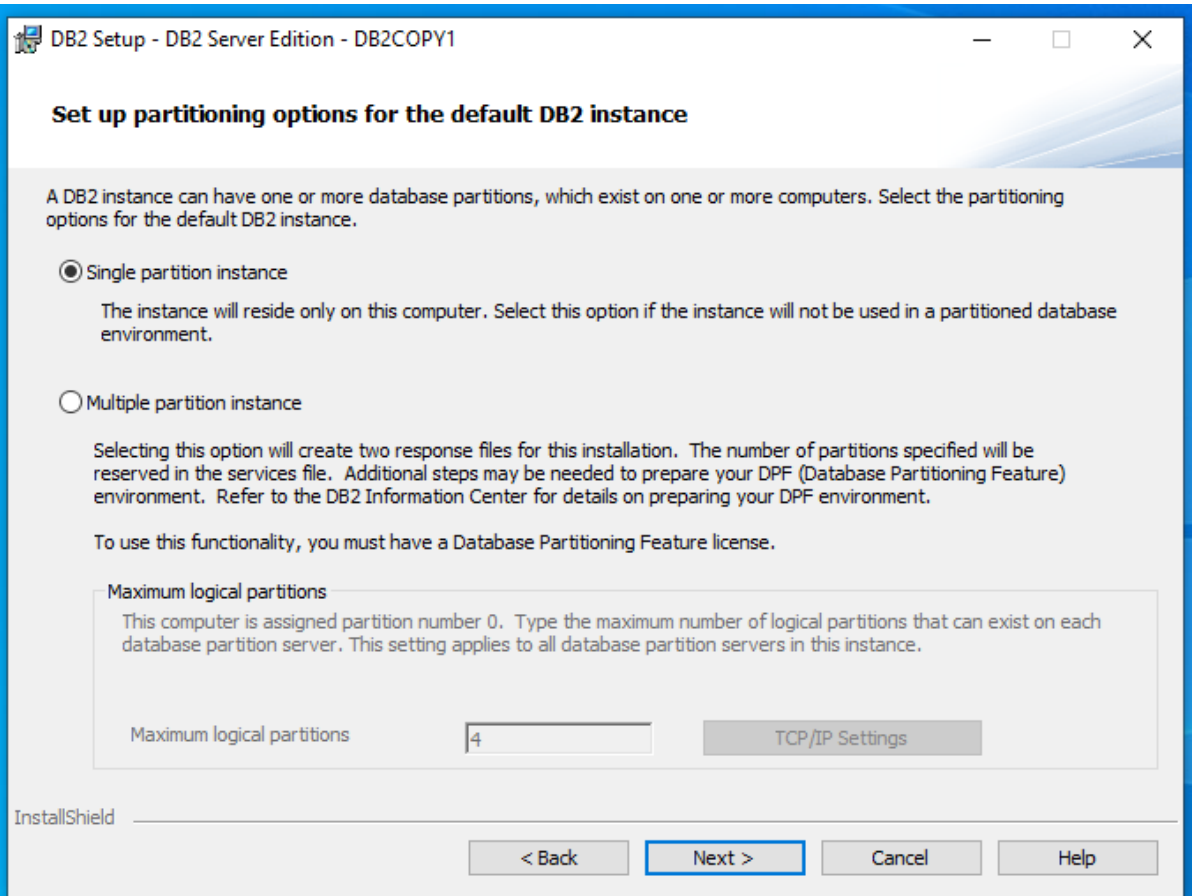




Step 4: Set the password and username.

The screenshot shows a Windows-style dialog box titled "DB2 Setup - DB2 Server Edition - DB2COPY1". The main heading is "Set user information for the DB2 Administration Server". Below the heading, there is a descriptive paragraph: "The DB2 Administration Server (DAS) runs on your computer to provide support required by the DB2 tools. Specify the required user information for the DAS." The dialog contains a "User information" section with four fields: "Domain" (a dropdown menu set to "None - use local user account"), "User name" (a text box containing "db2admin"), "Password" (a masked text box with 10 dots), and "Confirm password" (a masked text box with 10 dots). Below these fields is a checkbox labeled "Use the same account for the remaining DB2 services" which is checked. At the bottom left, the "InstallShield" logo is visible. At the bottom right, there are four buttons: "< Back", "Next >" (highlighted with a blue border), "Cancel", and "Help".

The screenshot shows a Windows-style dialog box titled "DB2 Setup - DB2 Server Edition - DB2COPY1". The main heading is "Set up a DB2 instance". Below the heading, there is a descriptive paragraph: "A DB2 instance is an environment in which you store data. You must have an instance to use this product. Either create the default DB2 instance or join an existing partitioned database environment." The dialog contains two radio button options: "Create the default DB2 instance" (which is selected) and "Join an existing partitioned database environment". At the bottom left, the "InstallShield" logo is visible. At the bottom right, there are four buttons: "< Back", "Next >" (highlighted with a blue border), "Cancel", and "Help".



Step 5: Do not click on the set up notifications

DB2 Setup - DB2 Server Edition - DB2COPY1

Set up notifications

You can set up your DB2 server to automatically send e-mail or pager notifications to alert administrators when a database needs attention. The contact information is stored in the administration contact list. You need an unauthenticated SMTP server to send these notifications.

If you do not set up your DB2 server to send notifications at this time, the health alerts are still recorded in the administration notification log.

Set up your DB2 server to send notifications

Notification SMTP server

Administration contact list location

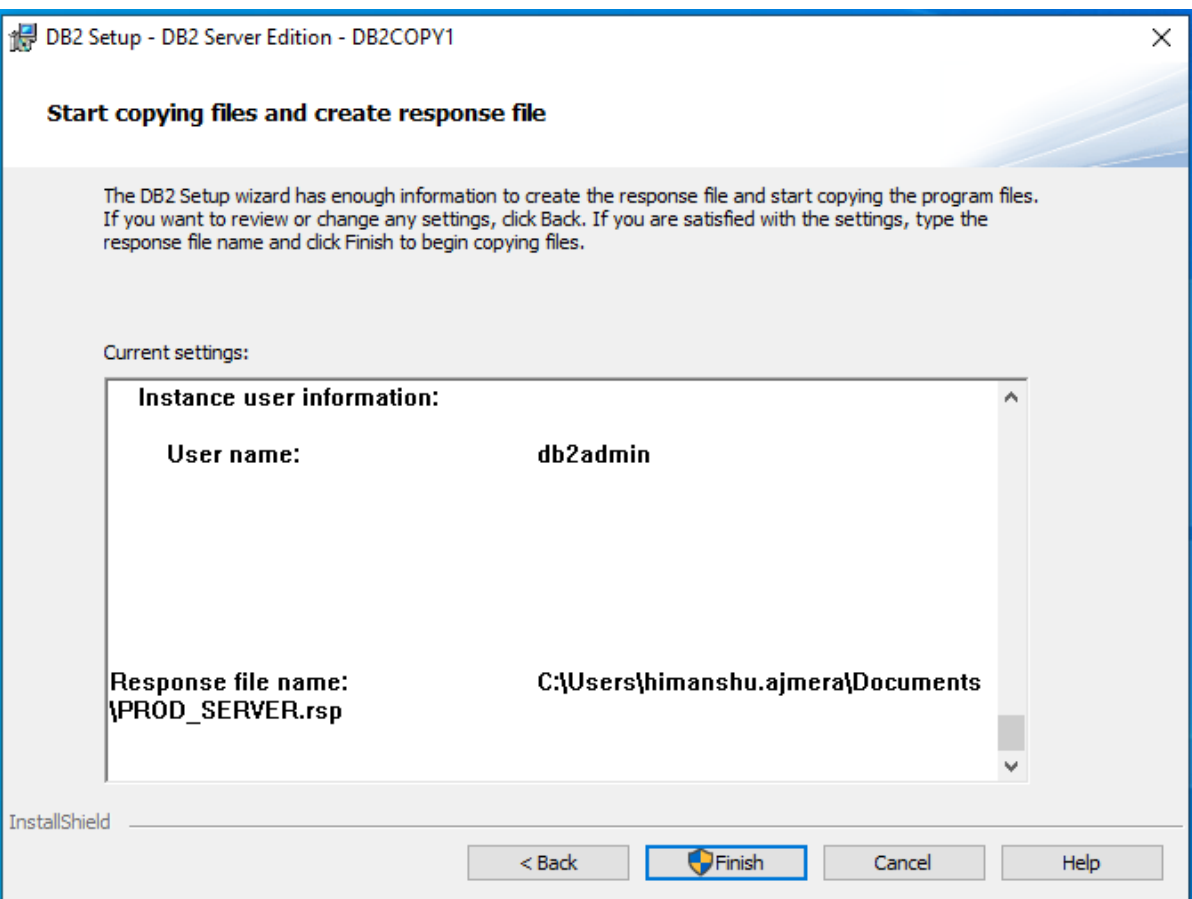
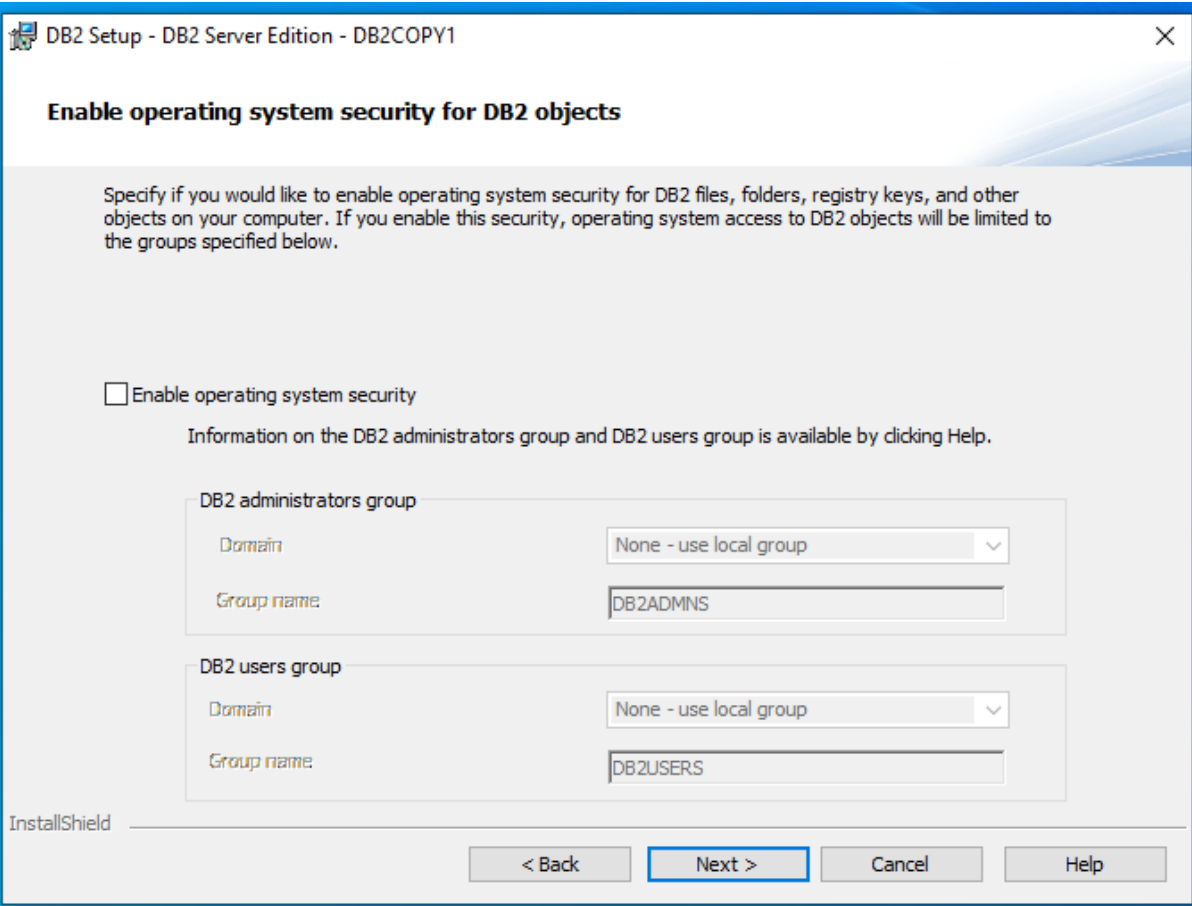
Local - Create a contact list on this computer

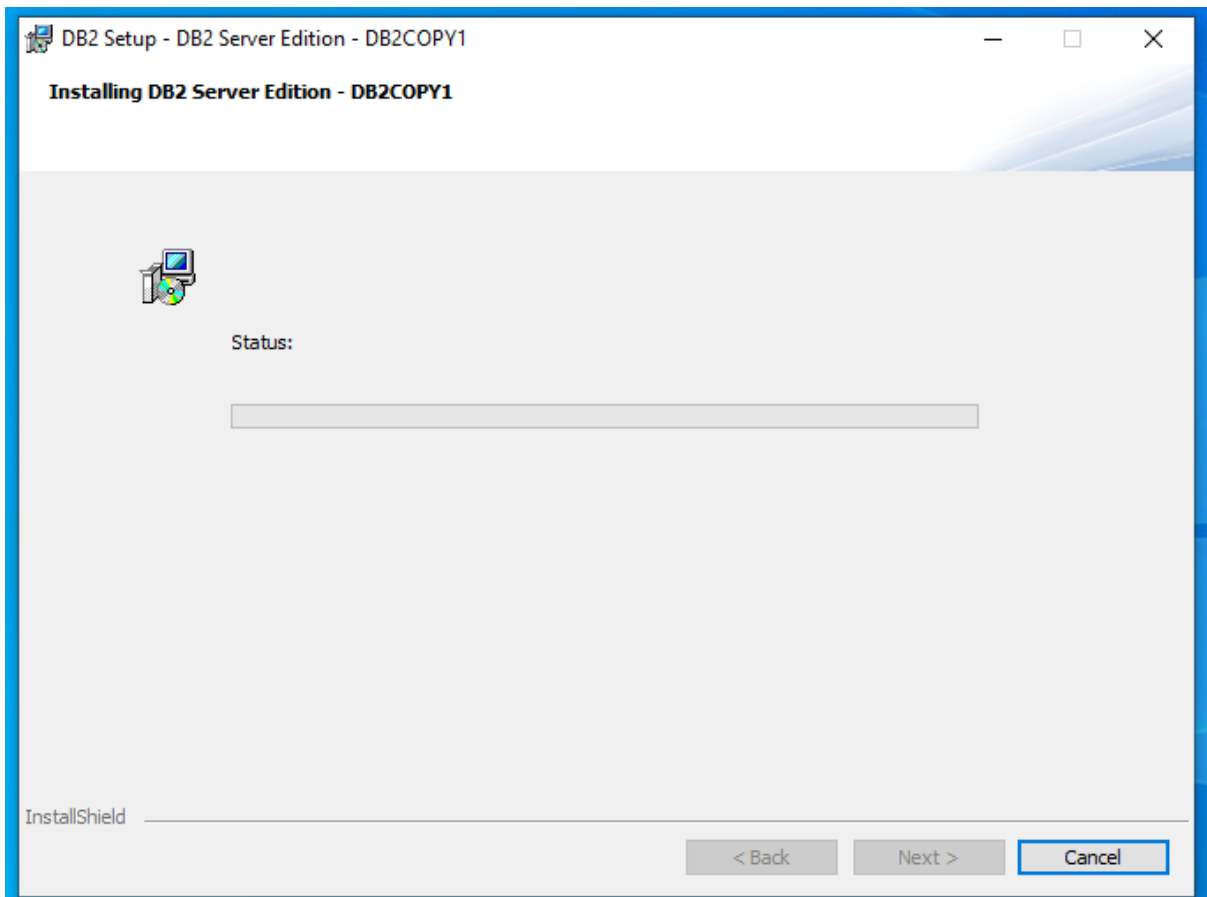
Remote - Use an existing contact list on another DB2 server

Remote DB2 server

InstallShield

< Back Next > Cancel Help





Step 6: Installation is finished and ready to use.